



SFMTA

West  
M N



# Transit Division Update

SFMTA Board of Directors

May 3, 2022

# Presentation Overview

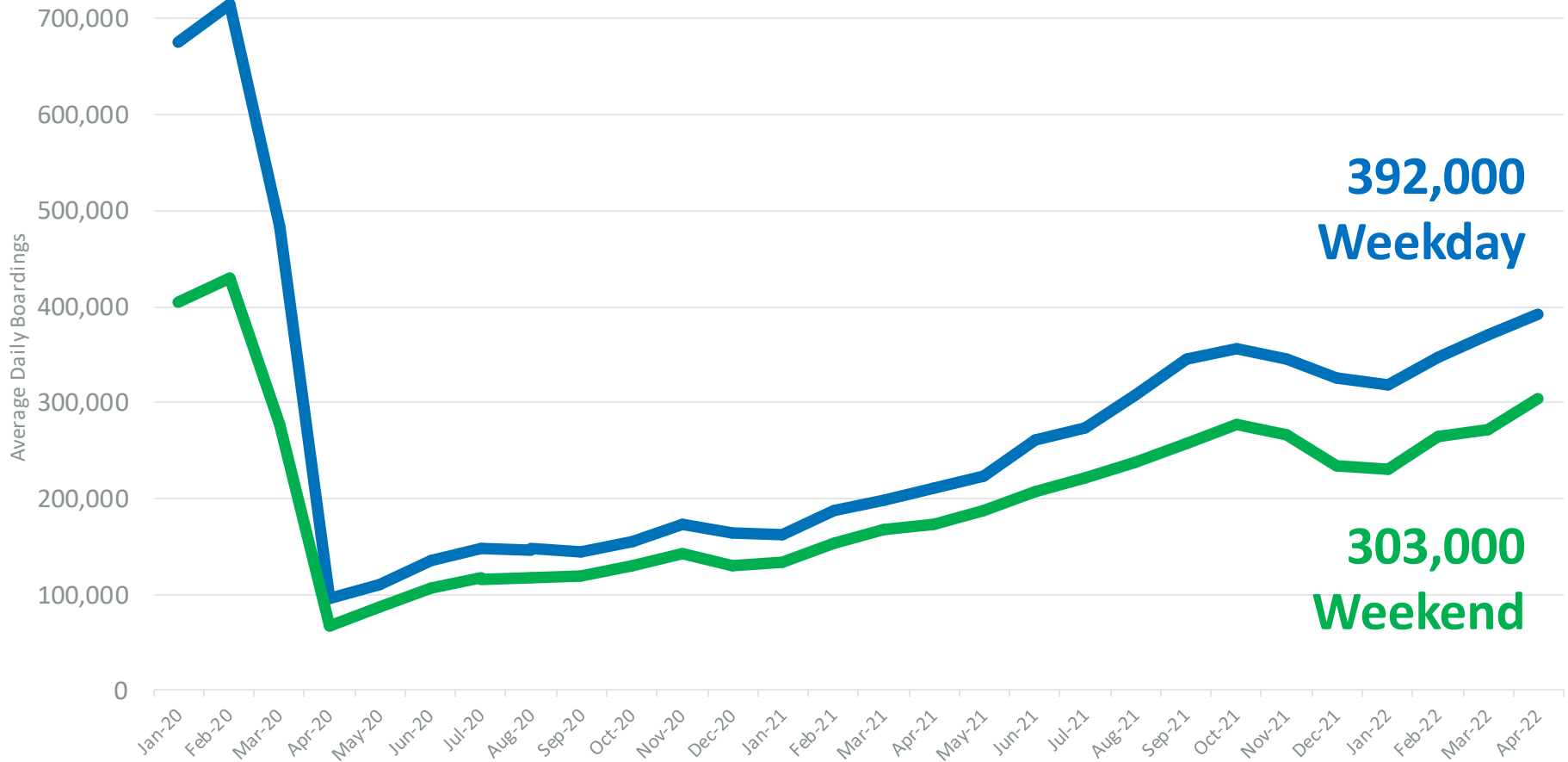
1. Ridership Trends
2. Van Ness Bus Rapid Transit (BRT)
3. Vision for Muni Metro
4. Subway Renewal
5. Fix it Week Outcomes





# Ridership Trends

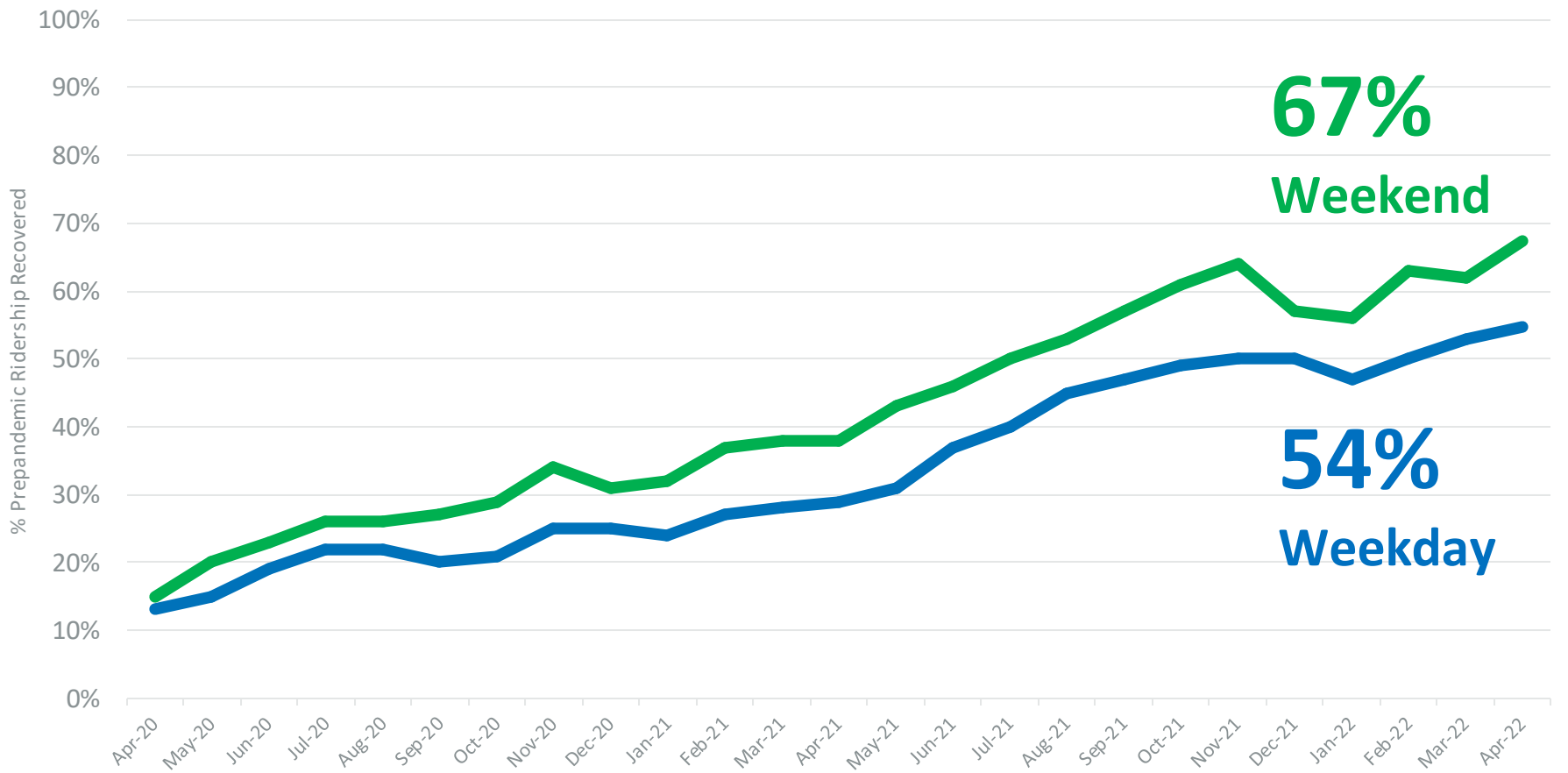
# Bus and Light Rail (LRV) Ridership Trends: Weekend and Weekday Boardings



April figures are preliminary and based on first two weeks of the month

# Bus and LRV Ridership Trends: Weekend and Weekday

*Weekend ridership recovery continues to outpace weekday*

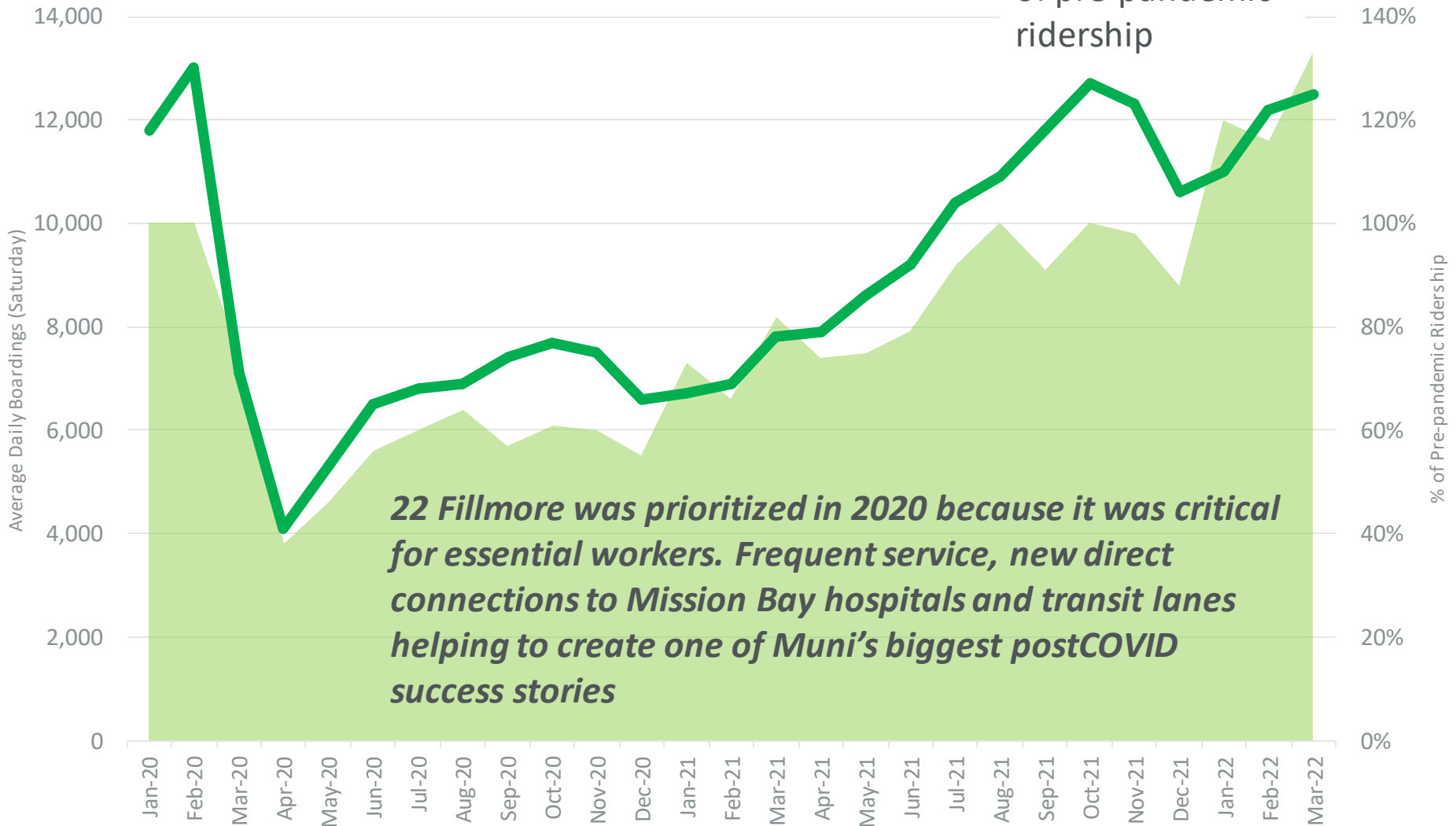


*April figures are preliminary and based on first two weeks of the month*

# 22 Fillmore - Weekend

**133%**

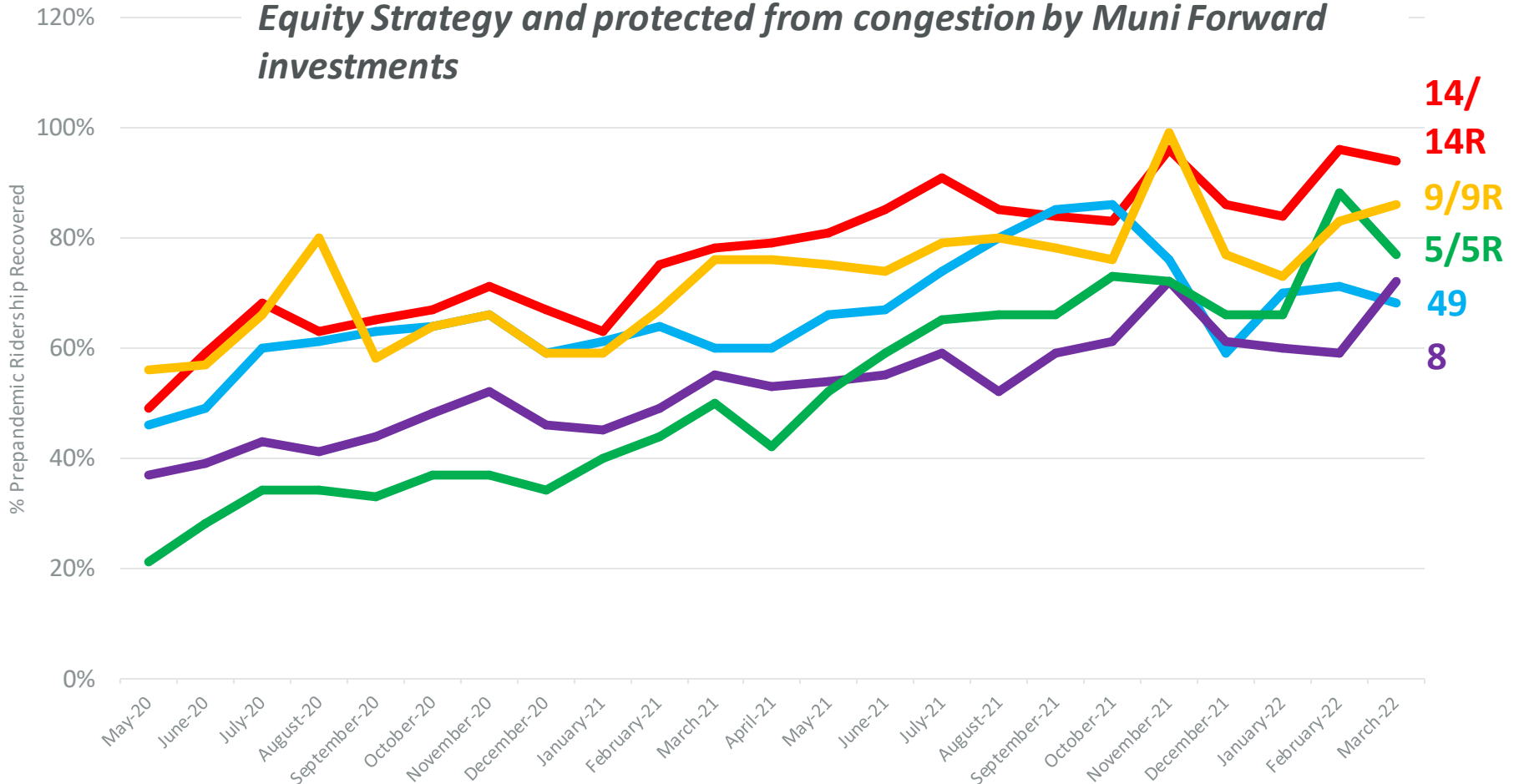
of pre-pandemic ridership



# Top Recovery Routes- Weekend

Routes with 20,000+ daily pre-pandemic boardings with highest recovery

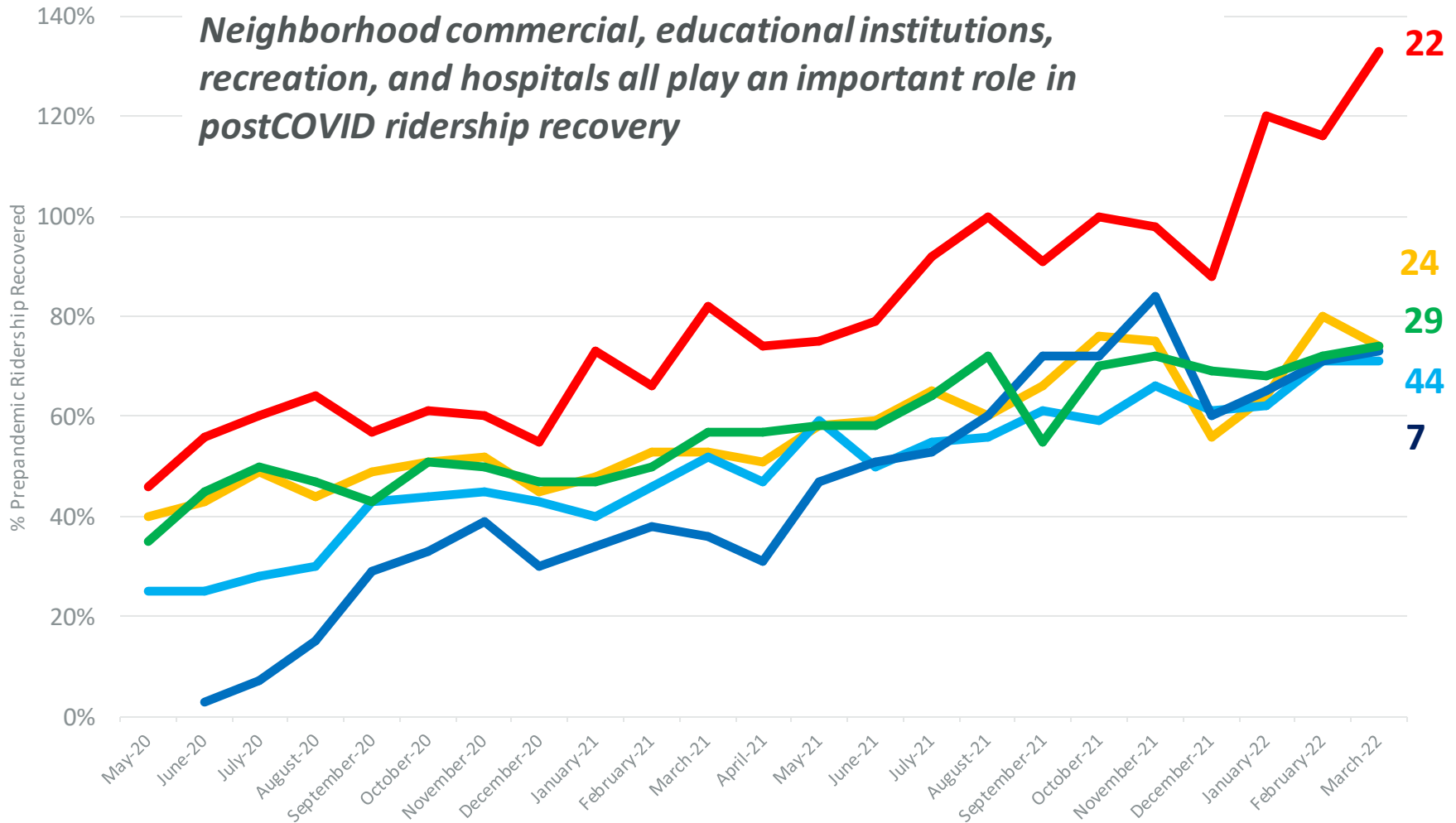
*Strongest ridership recovery occurring on routes prioritized by Muni Equity Strategy and protected from congestion by Muni Forward investments*





# Top Recovery Routes- Weekend

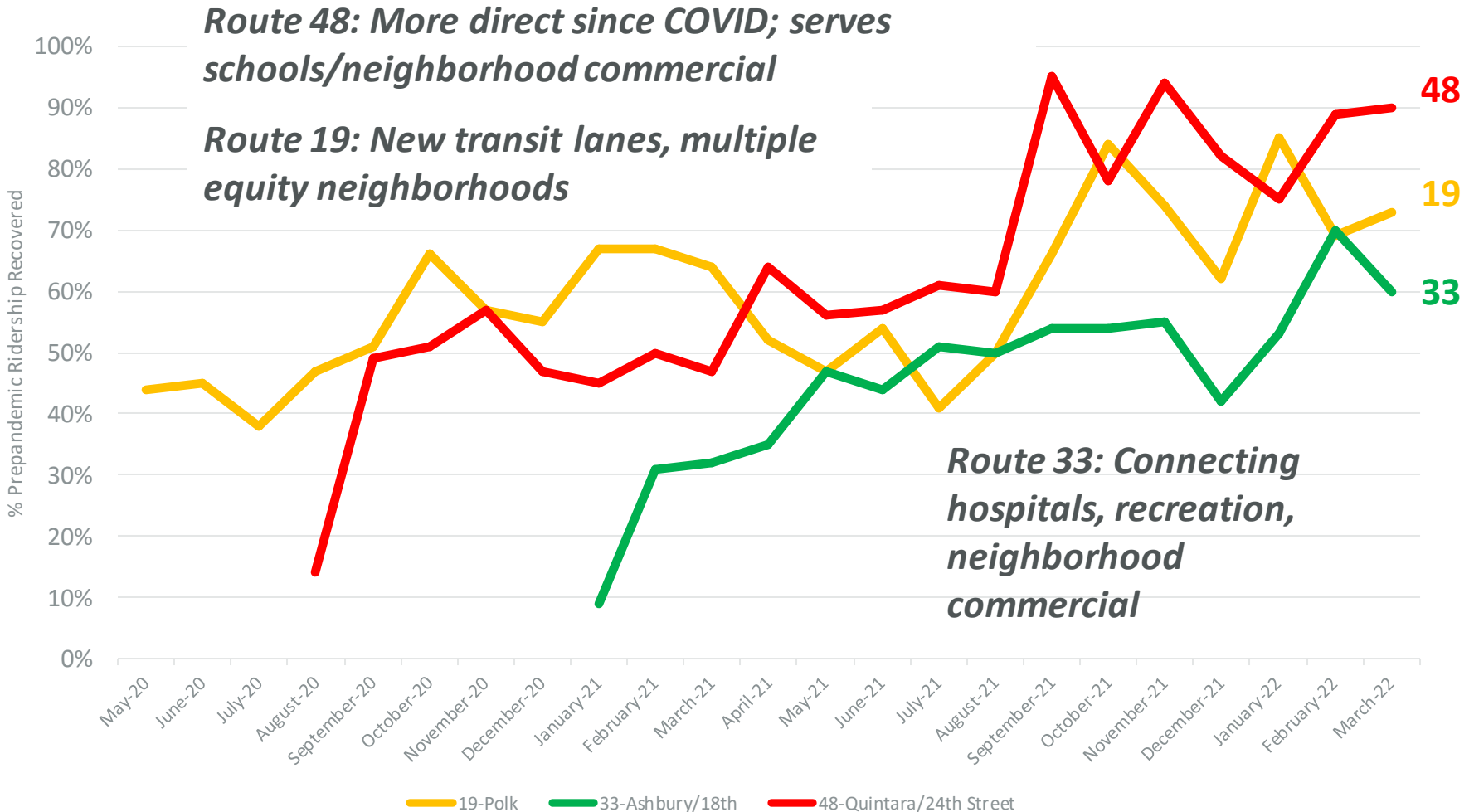
Routes with 10,000-20,000 daily pre-pandemic boardings with highest recovery





# Top Recovery Routes- Weekend

Routes with <10,000 daily pre-pandemic boardings with highest recovery





# Van Ness Bus Rapid Transit (BRT)

# Van Ness BRT Performance

- **13%** increase in ridership in the first week of BRT service
- Travel time **savings** up to **35%** northbound (up to 9 minutes per trip) and up to **22%** southbound on weekdays
- Travel time savings anticipated to improve once signal priority complete and operators are more familiar with corridor



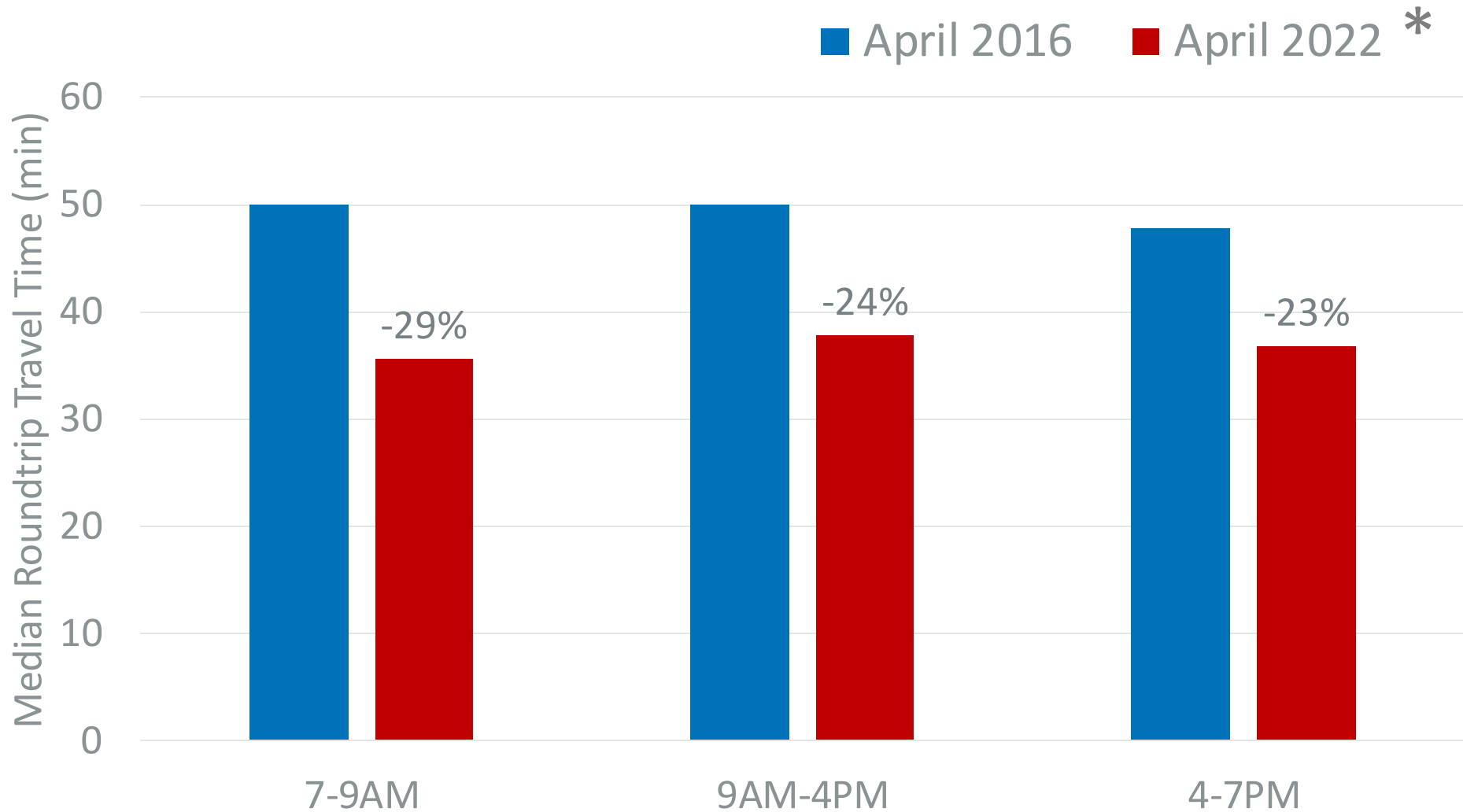


# Van Ness BRT Performance

- Travel time **variability** decreased by up to **26%** northbound and up to **55%** southbound
- Preliminary performance outcomes on Van Ness represent the latest success demonstrated by the Muni Forward program
- On average, Muni Forward projects achieve 20% reduction in travel time and 10% increase in ridership



# Van Ness BRT Travel Time Savings



*\*April figures are preliminary and based on first two weeks of the month*





Eastbound to ↑  
Embarcadero, 🚇

**M** OCEAN VIEW  
EMBARCADERO  
● 16   M 0, 11   N 9, 20  
● 8   T 3, 17

**M** OCEAN VIEW  
EMBARCADERO  
● 16   M 0, 11   N 9, 20  
● 8   T 3, 17

2061A

EMBARCADERO

35

SIEMENS

# Vision for Modernizing Muni Metro





# We envision a Muni Metro System that ...



## is the best option for citywide trips

- Supports City's climate, environmental and health goals
- Improves access and transportation-related quality of life
- Supports City's Vision Zero goals

## is free from delays

- Street traffic
- Subway congestion

## is frequent and reliable

- High frequency service
- Minimal wait times
- Predictable and smooth transfers

## is safe and accessible for all

- Personal and transportation safety
- Accessible for people with disabilities

# Muni Metro Modernization

## Muni Metro Modernization

### Subway Renewal

(one-time SGR capital investment and ongoing lifecycle mgmt.)

### Muni Forward Surface Rail

(enhancement and expansion capital investment)

Light Rail Fleet Management and Facility Upgrades  
(LRV lifecycle mgmt. and future facilities needs)

Train Control Upgrade Project

Muni Metro Core Capacity Planning Study  
(system capacity analysis)

Together, these improvements will enable us achieve SFMTA's vision for Muni Metro and ensure we deliver first-class rail service for our customers.



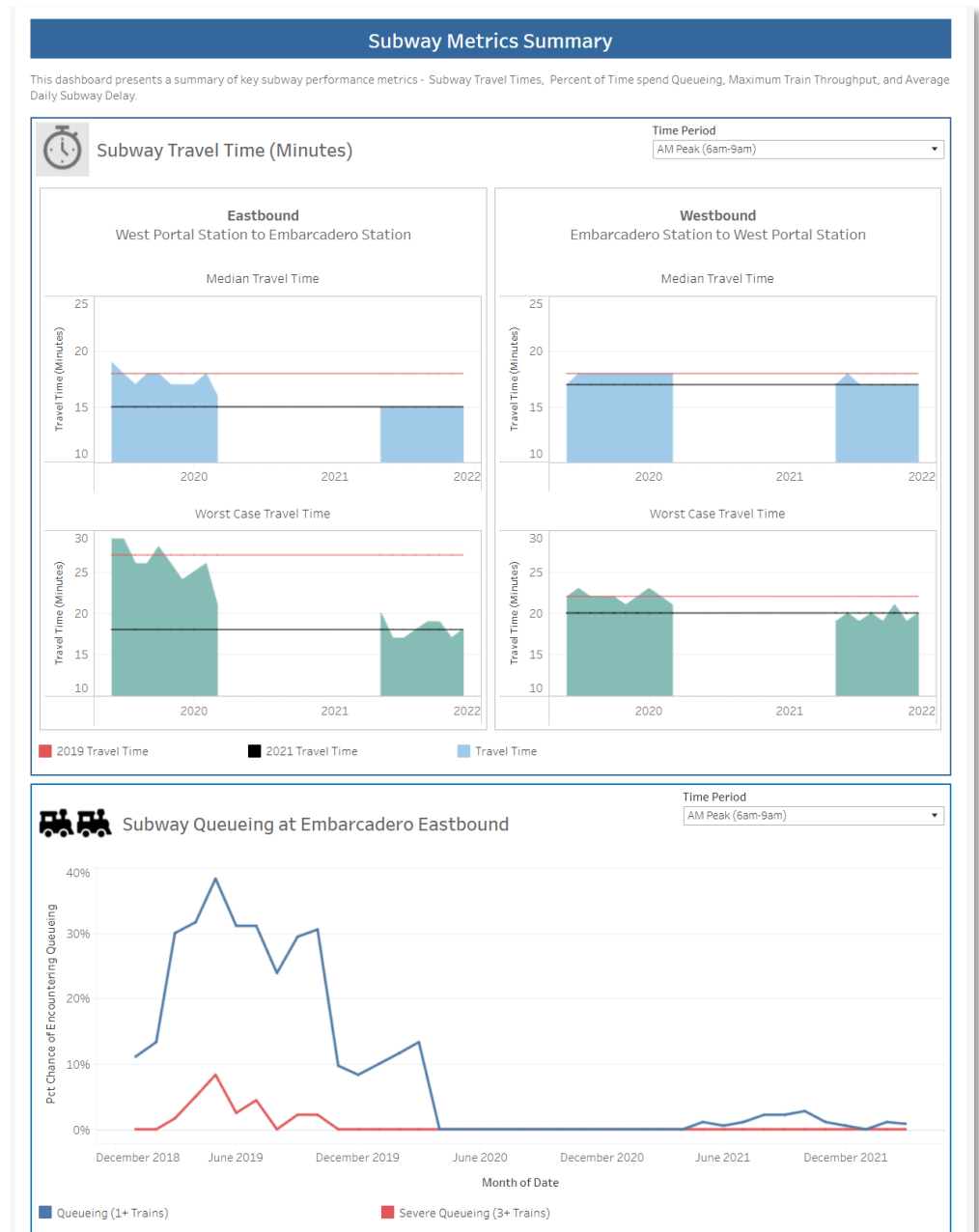
# Subway Performance



# Subway Performance Data

Available on SFMTA's website at:

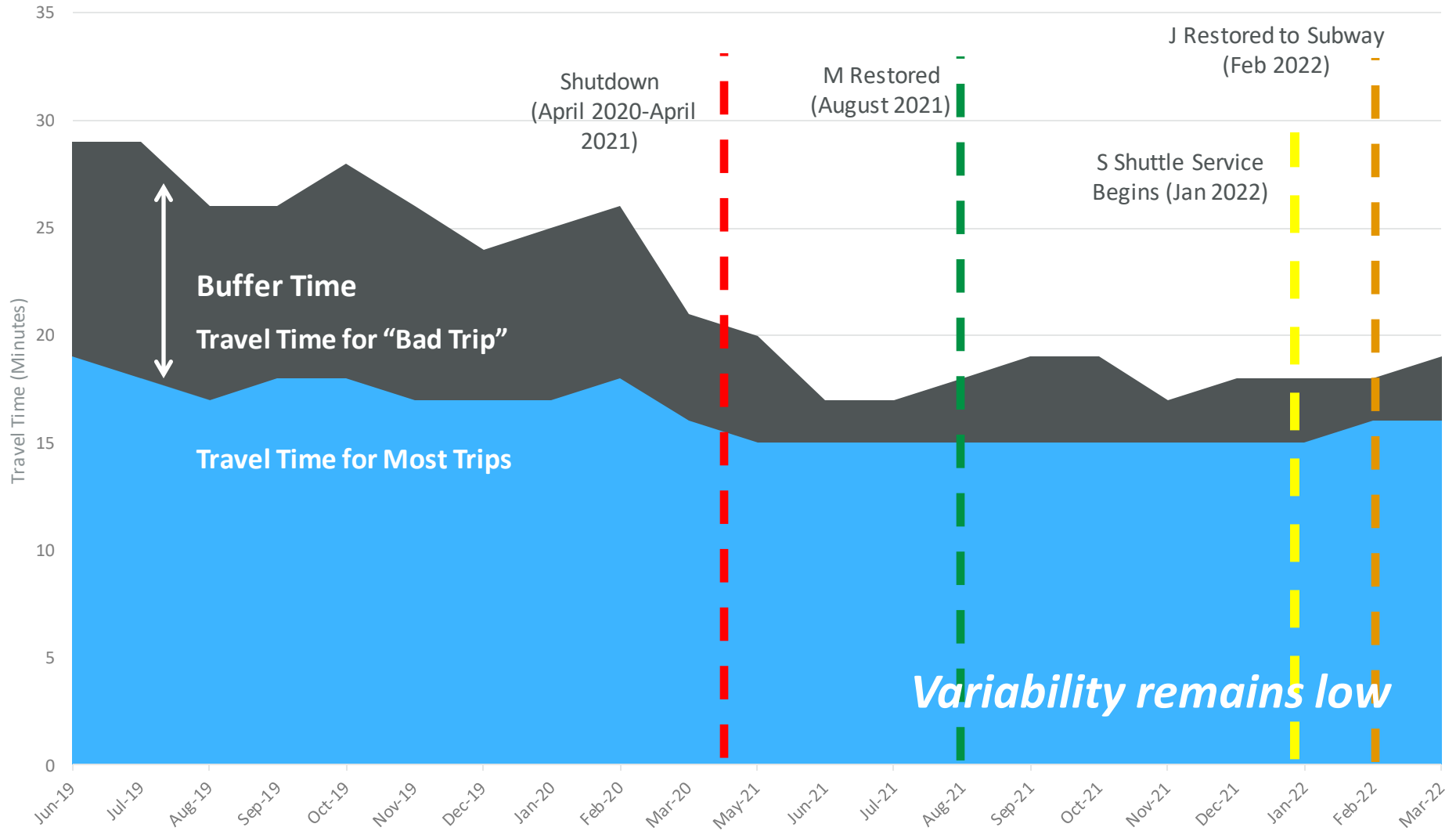
[SFMTA.com/Subway-Performance-Data](https://www.sfmta.com/Subway-Performance-Data)





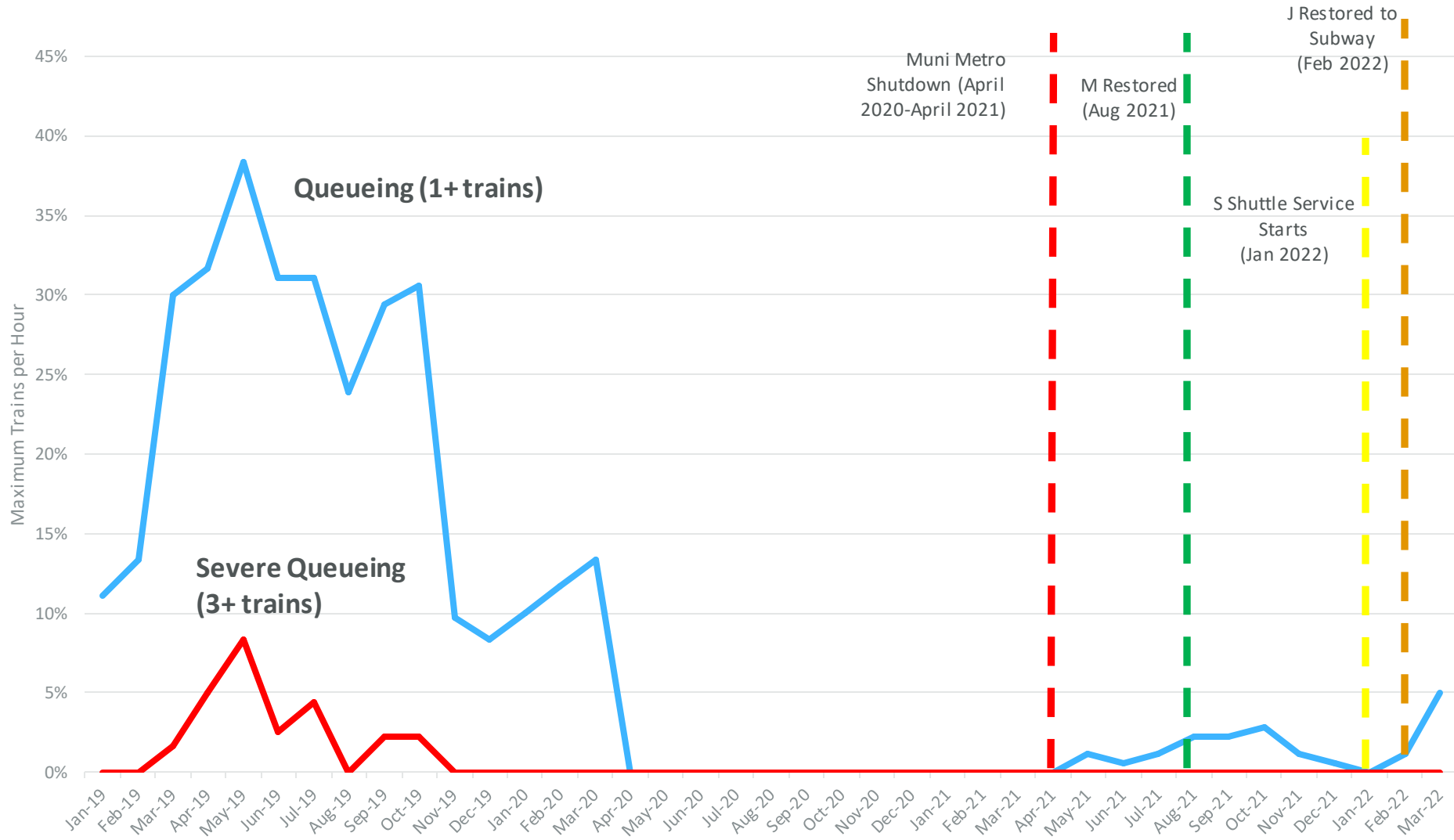
# Subway End to End Travel Times

## West Portal — Embarcadero, morning peak



# Presence of Queuing

## Embarcadero Station Eastbound - AM Peak





# Subway Renewal

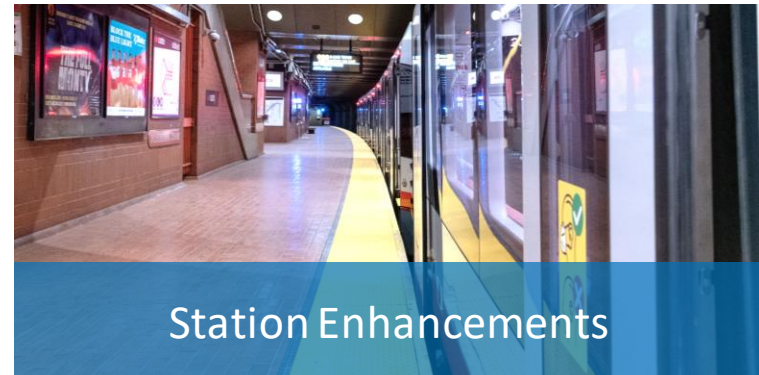
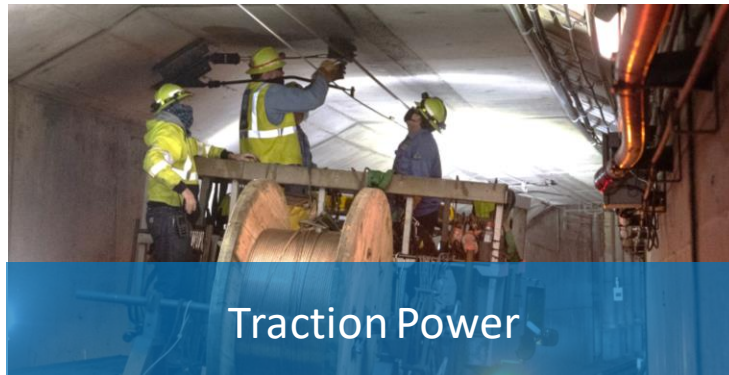
10-year capital investment strategy for the Subway

# Subway Renewal: Implementation Principles

1. **Lifecycle Management:** Commit to a lifecycle management approach that results in timely assessment, repair and replacement of service critical assets and keeps the subway in a continual state of good repair.
2. **Customer Experience:** Integrate delivery of improvements to customer-facing amenities with improvements to service critical assets to build public support and foster trust.
3. **Resilient and Redundant:** Build a more resilient subway that addresses known vulnerabilities, builds in redundancy and responds to security and environmental threats.
4. **Project Delivery:** Pair ongoing incremental delivery with strategically planned shutdowns that maximize progress per construction window.
5. **Adaptive System:** Create a more flexible and adaptive system to support existing riders and prepare for potential growth



# Subway Renewal: Investment Areas





# Subway Renewal identifies ten years of critical improvements needed in the Subway.



Total Need	\$ 1,715M
Program and Project Planning	\$ 23M
Train Control Upgrades	\$ 609M
Track Replacement & Wayside Equipment	\$ 235M
Traction Power Upgrades	\$ 499M
Tunnel Safety, Security & Resiliency	\$ 46M
Stations & Passenger Comfort	\$ 303M

# Subway Renewal: Next Steps

Detail a comprehensive implementation strategy

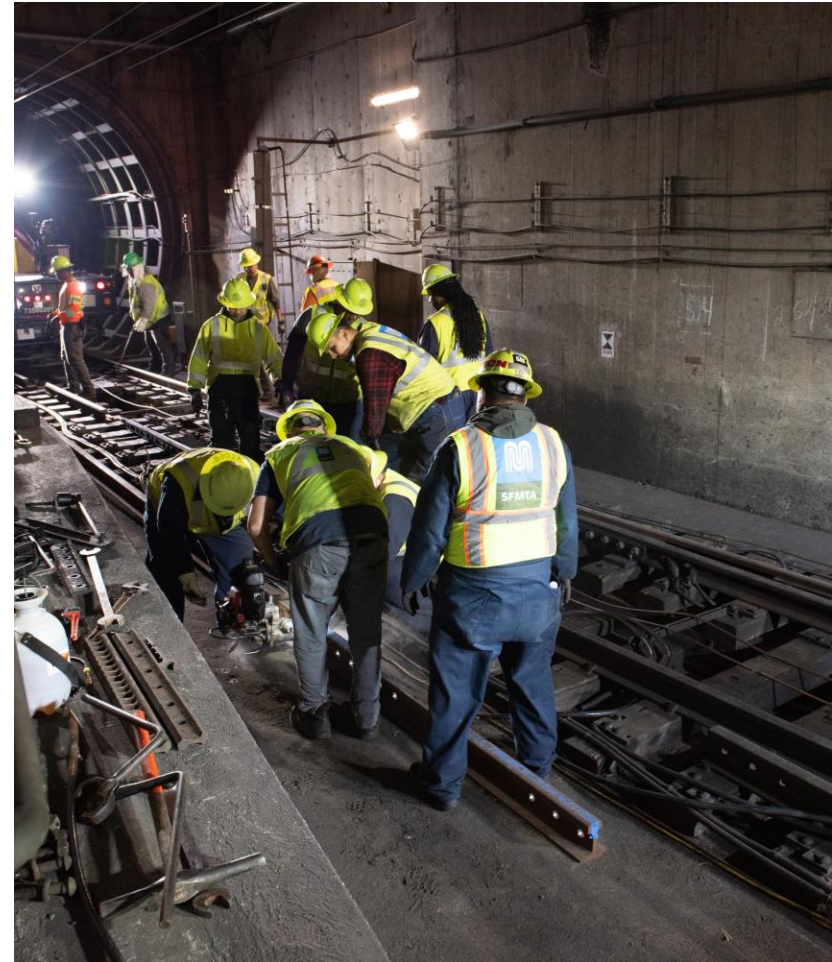
- Program Management Approach
- Community Engagement Strategy
- Contracting and Construction Delivery
- Funding Strategy

Implement incremental improvements with internal staff and existing contracts

Complete a series of studies to guide key investment categories

- Facilities Condition Assessment
- Rigid Traction Power Feasibility
- Signal Interlocking Standardization

Issue RFP for Train Control Project





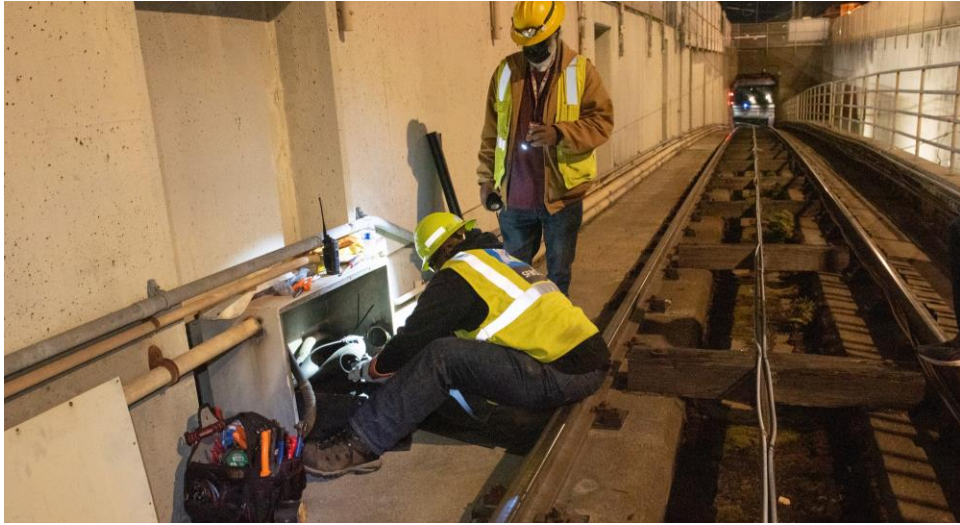


# Fix it Week

Completed advanced metro maintenance work overnight between April 14<sup>th</sup> and April 24<sup>th</sup>



# Fix it Week: Work Completed





# Fix it Week: Work Completed





**Thank you.**