



SFMTA

April 8, 2022

Engineering Public Hearing

<https://sfmta.com/enghearing>

Conference Line: 888-398-2342

Access Code: 8647385#

[SFMTA.com/ENGSpeakerCard](https://sfmta.com/ENGSpeakerCard)

Proposed Street Changes

How does a proposed street change get approved?



<https://www.sfmta.com/committees/engineering-public-hearings>


Public Hearing Decision Posting


Results will be posted by
5 PM next Friday

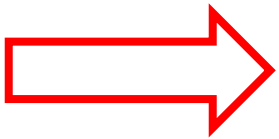
<https://www.sfmta.com/calendar/engineering-public-hearing-meeting-april-8-2022>

Referenced Materials

Engineering Public Hearing Agenda, December 17, 2021

 Engineering Public Hearing Agenda, December 17, 2021

 Engineering Public Hearing Results, December 17, 2021





SFMTA

April 8, 2022

Engineering Public Hearing

<https://sfmta.com/enghearing>

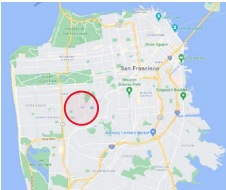
Conference Line: 888-398-2342

Access Code: 8647385#

[SFMTA.com/ENGSpeakerCard](https://sfmta.com/ENGSpeakerCard)

1. ESTABLISH - RESIDENTIAL PERMIT PARKING AREA T

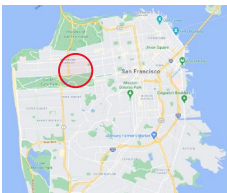
254 Laguna Honda Blvd (Supervisor District 7) (Requires approval by the SFMTA Board) Gerry Porras, gerry.porras@sfmta.com



Conference Line: **1-888-398-2342** (use access code: 8647385)

To comment on an item, press "1" and then "0" when prompted.

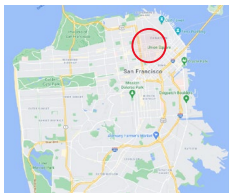
2. ESTABLISH - RESIDENTIAL PERMIT PARKING AREA L
538-540 Balboa Street between 7th and 6th Avenues (Supervisor District 1) (Requires approval by the SFMTA Board) Gerry Porras, gerry.porras@sfmta.com



Conference Line: **1-888-398-2342** (use access code: 8647385)

To comment on an item, press "1" and then "0" when prompted.

3. ESTABLISH - RESIDENTIAL PERMIT PARKING AREA C
620 Jones Street between Post Street and Geary Street (Supervisor District 3) (Requires approval by the SFMTA Board) Gerry Porras, gerry.porras@sfmta.com

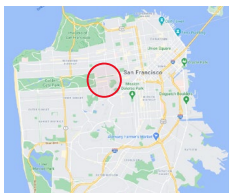
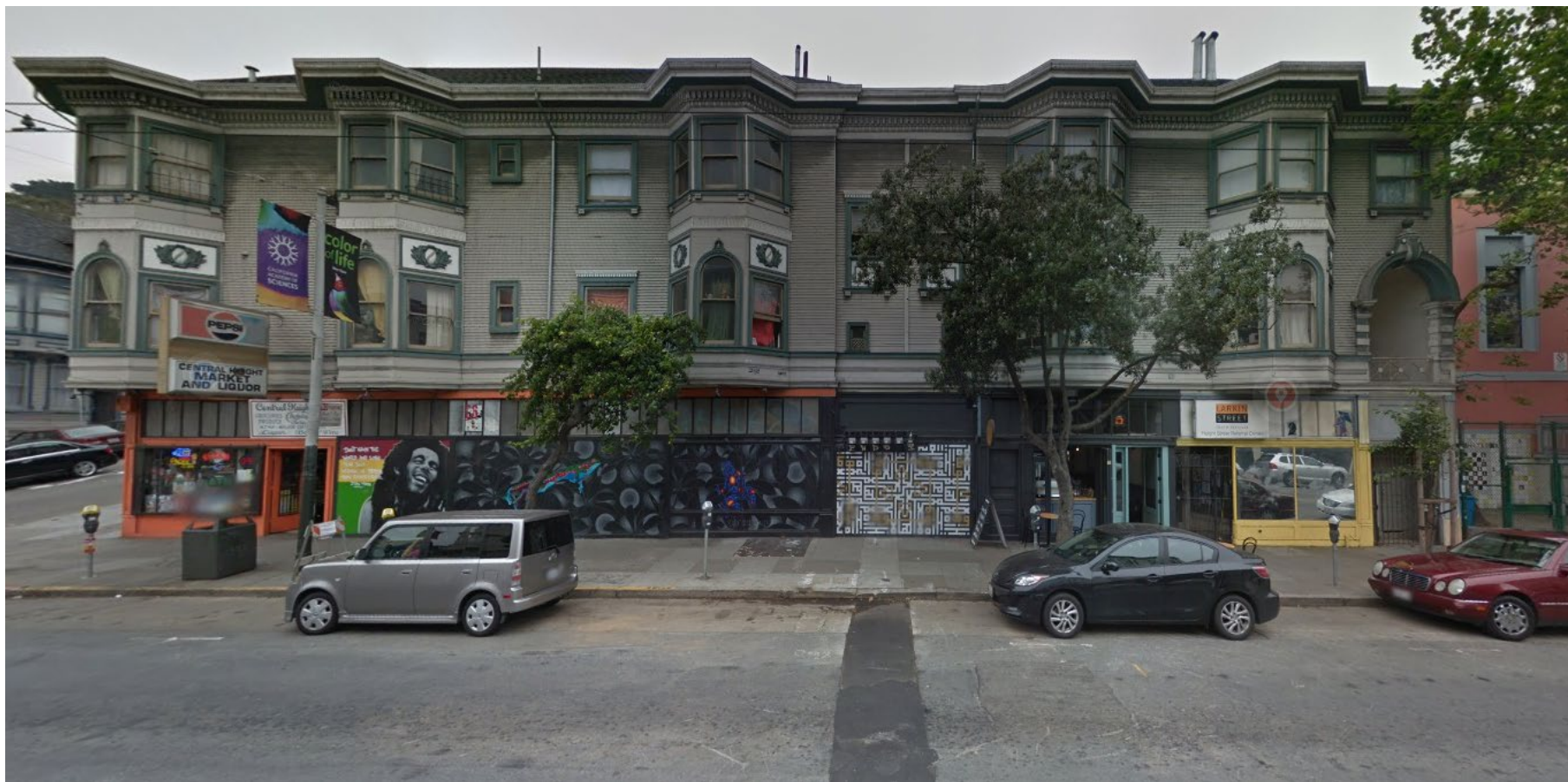


Conference Line: **1-888-398-2342** (use access code: 8647385)

To comment on an item, press "1" and then "0" when prompted.

4. ESTABLISH - RESIDENTIAL PERMIT PARKING AREA Q

1301-1327 Haight Street (Supervisor District 5) (Requires approval by the SFMTA Board) Gerry Porras, gerry.porras@sfmta.com

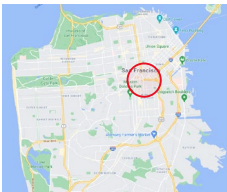
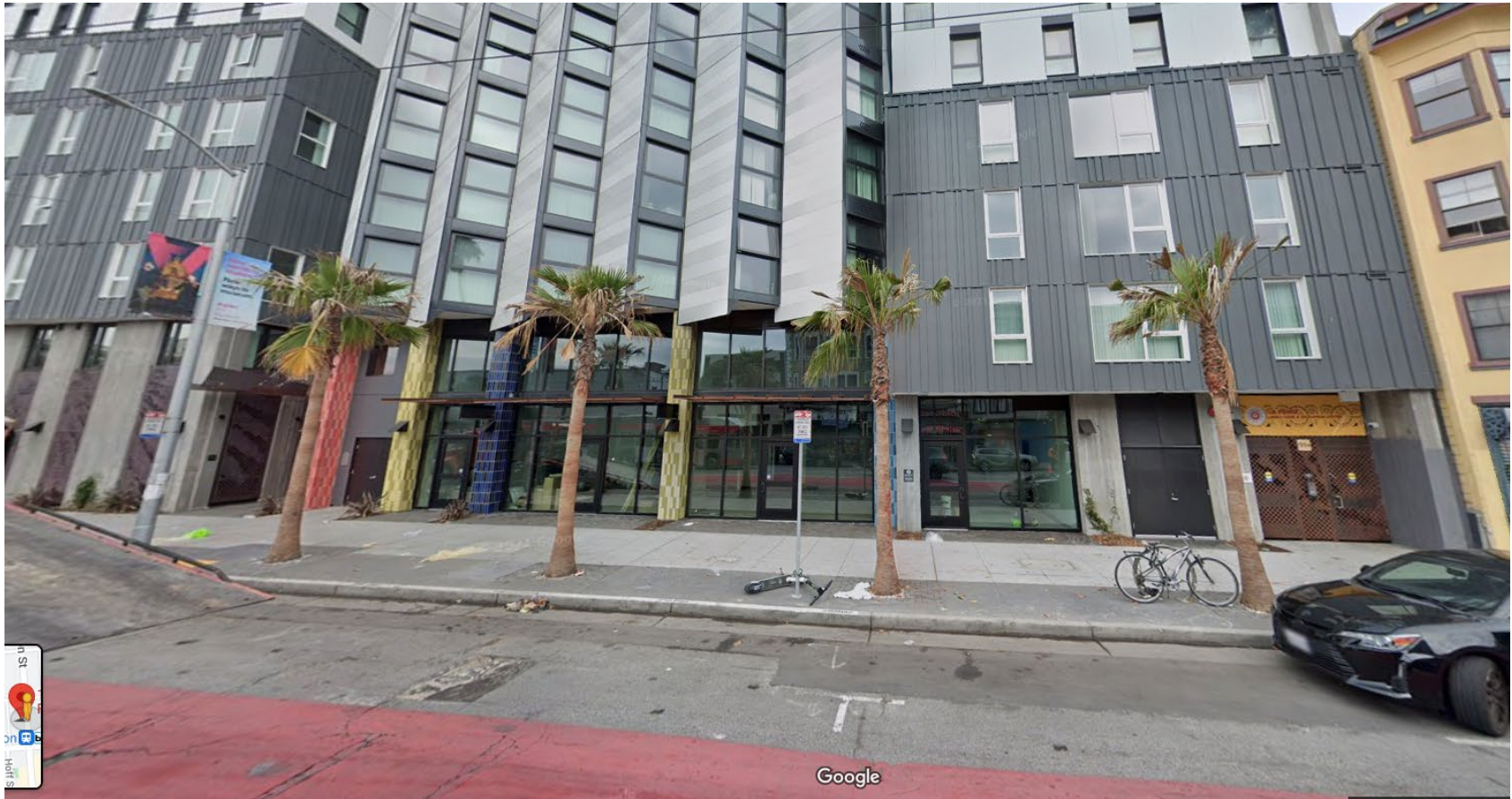


Conference Line: **1-888-398-2342** (use access code: 8647385)

To comment on an item, press "1" and then "0" when prompted.

5. ESTABLISH - RESIDENTIAL PERMIT PARKING AREA I

1946-1954 Mission Street between 15th and 16th Streets (Supervisor District 9) (Requires approval by the SFMTA Board) Gerry Porras, gerry.porras@sfmta.com

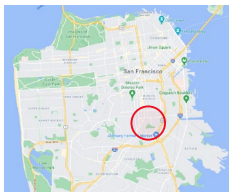
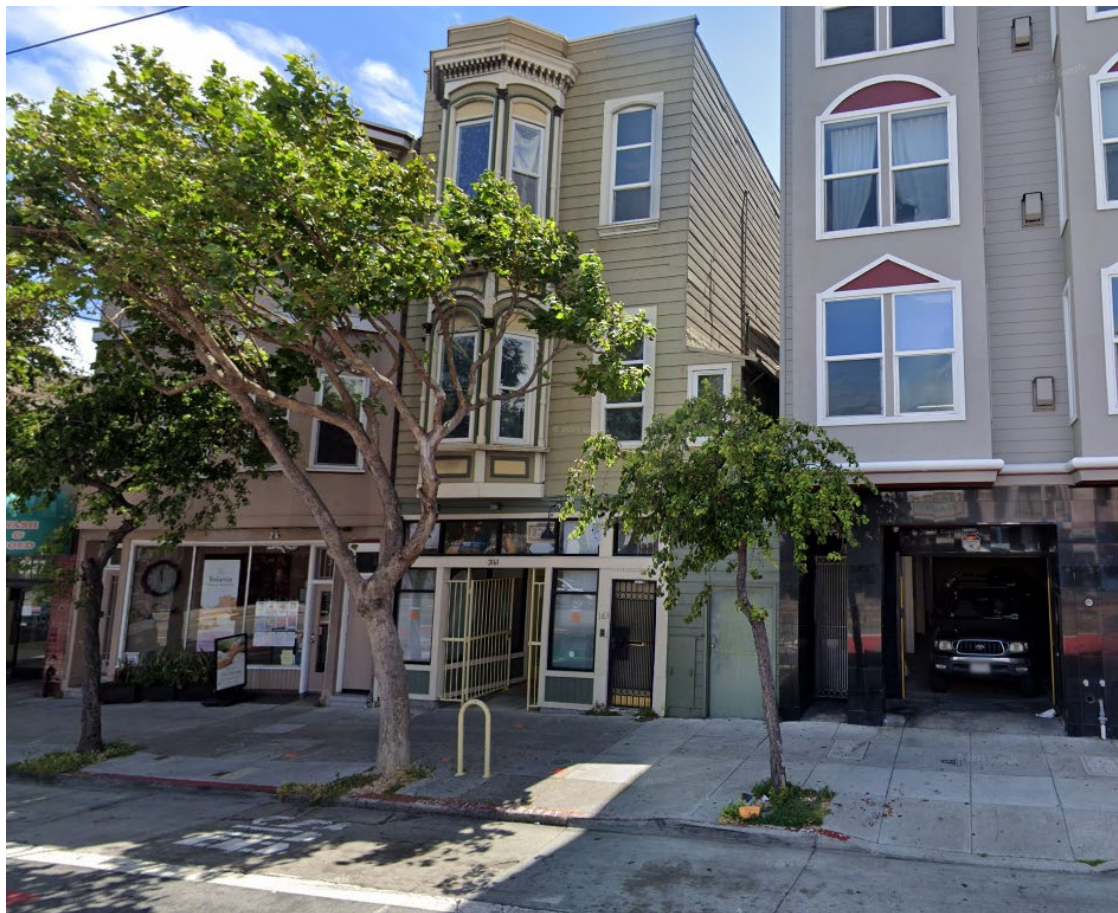


Conference Line: **1-888-398-2342** (use access code: 8647385)

To comment on an item, press "1" and then "0" when prompted.

6. ESTABLISH - RESIDENTIAL PERMIT PARKING AREA AA

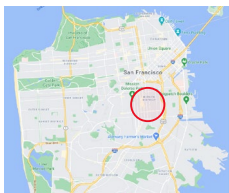
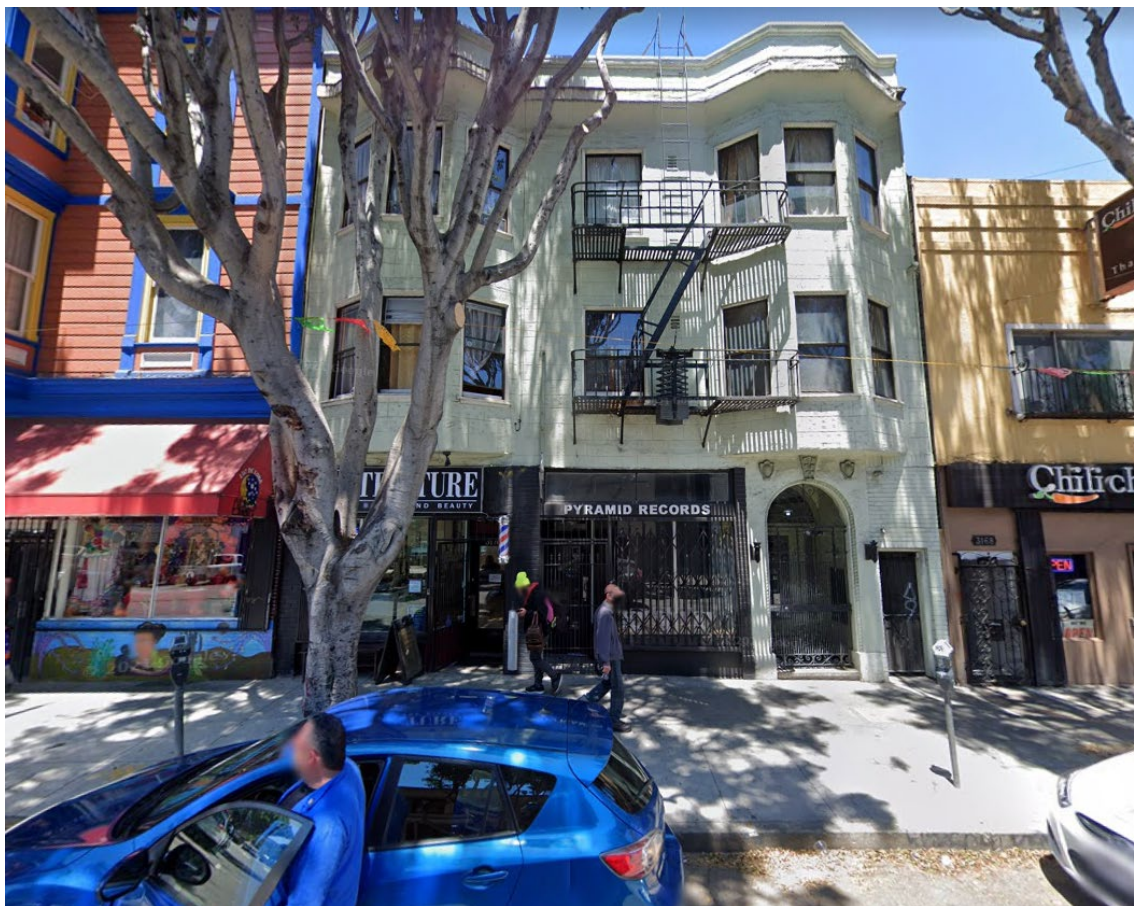
3161-3163 Mission Street between Powers and Precita Avenues (Supervisor District 9) (Requires approval by the SFMTA Board) Gerry Porras, gerry.porras@sfmta.com



Conference Line: **1-888-398-2342** (use access code: 8647385)

To comment on an item, press "1" and then "0" when prompted.

7. ESTABLISH - RESIDENTIAL PERMIT PARKING AREA I
3172-3178 24th Street between South Van Ness Avenue and Shotwell Street (Supervisor District 9)
(Requires approval by the SFMTA Board) Gerry Porras, gerry.porras@sfmta.com

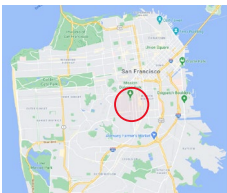
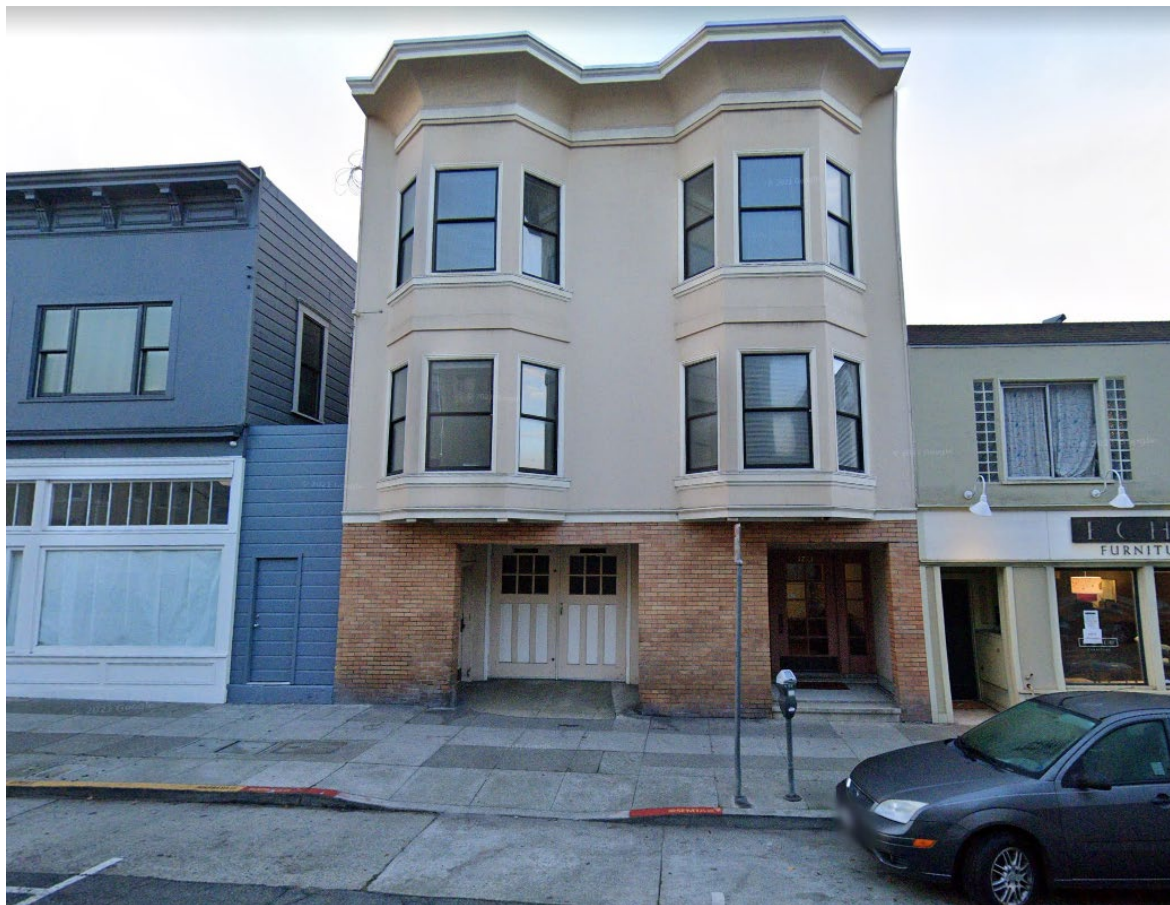


Conference Line: **1-888-398-2342** (use access code: 8647385)

To comment on an item, press "1" and then "0" when prompted.

8. ESTABLISH - RESIDENTIAL PERMIT PARKING AREA Z

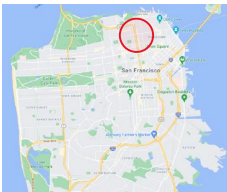
3751-3763 24th Street between Chattanooga Street and Church Street (Supervisor District 8) (Requires approval by the SFMTA Board) Gerry Porras, gerry.porras@sfmta.com



Conference Line: **1-888-398-2342** (use access code: 8647385)

To comment on an item, press "1" and then "0" when prompted.

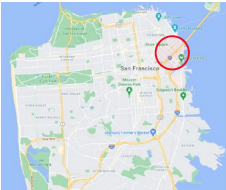
9. RESCIND – RPP AREAS A, C, K, 2-HOUR PARKING 8 AM-9 PM, MONDAY THROUGH SATURDAY
ESTABLISH - GENERAL METERED PARKING, TWO-HOUR TIME LIMIT, 9AM-6PM, MONDAY THROUGH SATURDAY
Green Street, north side, from 30 feet to 90 feet west of Polk Street
Green Street, south side, from 10 feet to 110 feet west of Polk Street
(Supervisor District 3) (Requires approval by the SFMTA Board) Kenya Wheeler, kenya.wheeler@sfmta.com



Conference Line: **1-888-398-2342** (use access code: 8647385)

To comment on an item, press "1" and then "0" when prompted.

10. ESTABLISH - GENERAL METERED PARKING, NO TIME LIMIT, 7AM-6PM, MONDAY THROUGH SATURDAY
Rincon Street, west side, from Bryant Street to 180 feet north
Rincon Street, east side, from Bryant Street to 180 feet north
(Supervisor District 6) (Requires approval by the SFMTA Board) Kenya Wheeler, kenya.wheeler@sfmta.com



Conference Line: **1-888-398-2342** (use access code: 8647385)

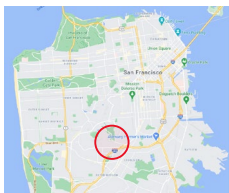
To comment on an item, press "1" and then "0" when prompted.

11. ESTABLISH – STOP SIGNS

Mangels Avenue, eastbound and westbound, at Nordhoff Street

Nordhoff Street, southbound, at Mangels Avenue

(Supervisor District 8) (Approvable by the City Traffic Engineer) Alvin Lam, alvin.lam@sfmta.com



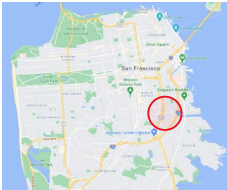
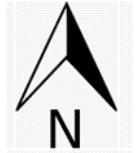
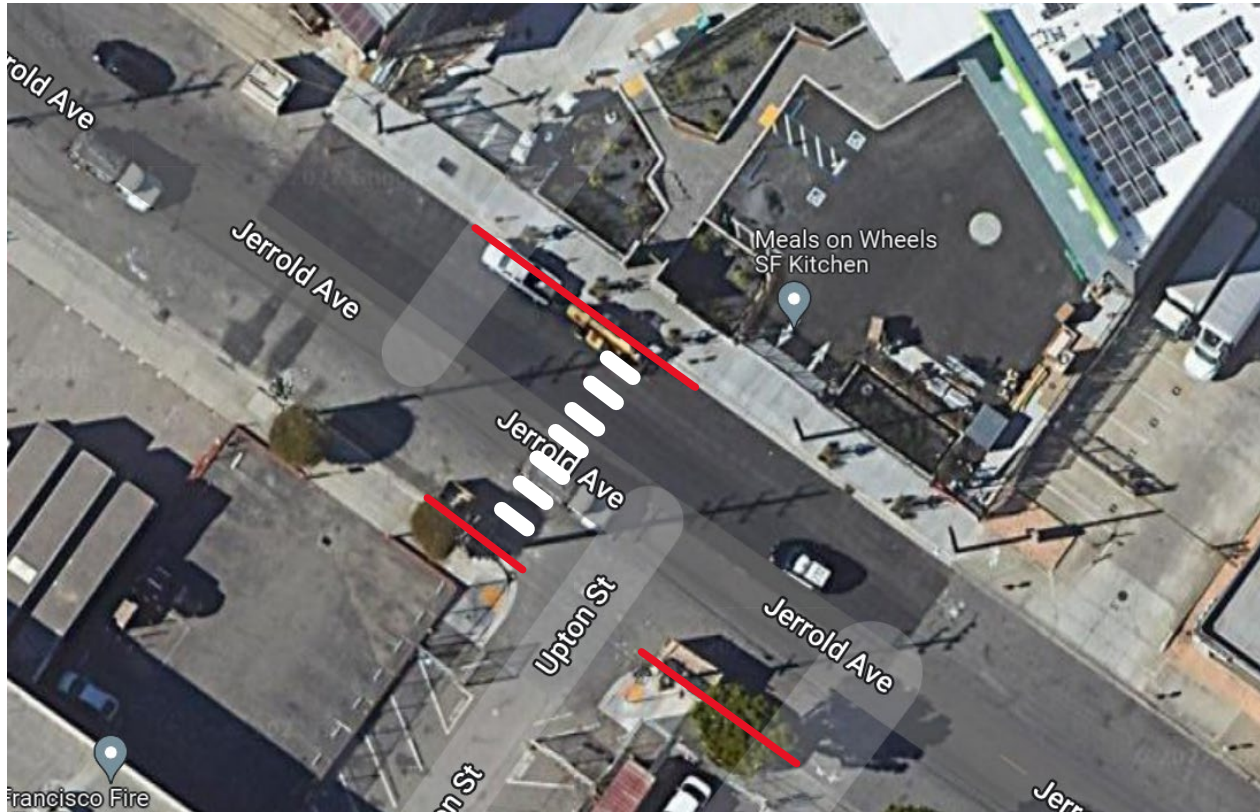
Conference Line: **1-888-398-2342** (use access code: 8647385)

To comment on an item, press "1" and then "0" when prompted.

12. ESTABLISH – RED ZONES

- A. Jerrold Avenue, south side, from Upton Street west curb line to 30 feet westerly (removes one parking space)
- B. Jerrold Avenue, south side, from Upton Street east curb line to 44 feet easterly (removes two parking spaces)
- C. Jerrold Avenue, north side, from 8 feet east of Upton Street west curb line to 62 feet westerly (removes three parking spaces)

(Supervisor District 10) (Approvable by the City Traffic Engineer) Alvin Lam, alvin.lam@sfmta.com

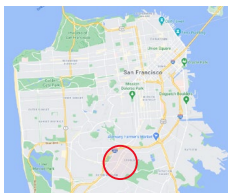


Conference Line: **1-888-398-2342** (use access code: 8647385)

To comment on an item, press "1" and then "0" when prompted.

13. ESTABLISH – STOP SIGN

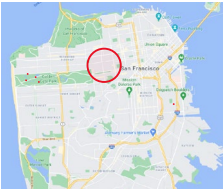
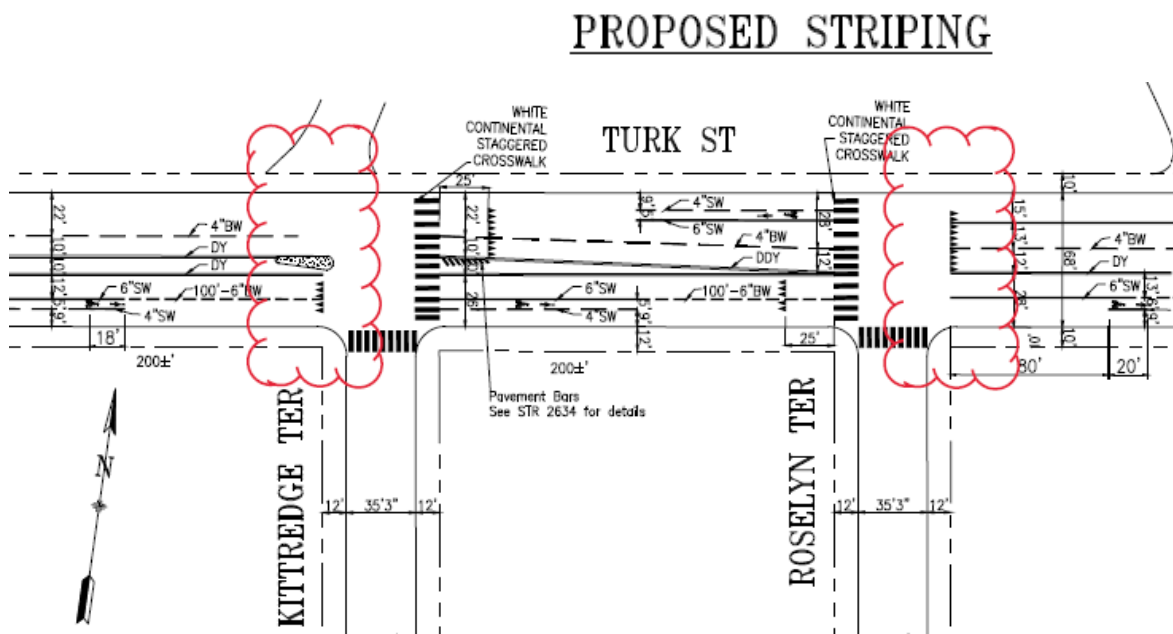
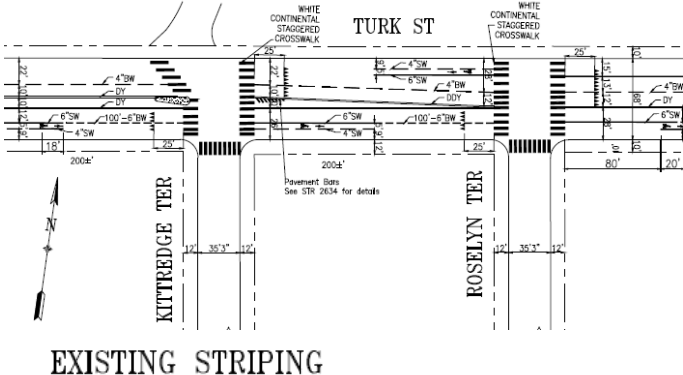
Bertita Street, southbound, at Seneca Avenue (Supervisor District 11) (Approvable by the City Traffic Engineer) Amy Chun, amy.chun@sfmta.com



Conference Line: **1-888-398-2342** (use access code: 8647385)

To comment on an item, press "1" and then "0" when prompted.

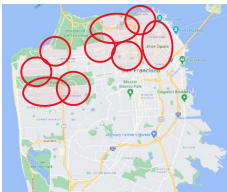
- 14(a). ESTABLISH - RECTANGULAR RAPID FLASHING BEACON
Turk Blvd at Roselyn Terrace, west leg (Approvable by the City Traffic Engineer)
- 14(b). ESTABLISH - CROSSWALK CLOSURE
Turk Blvd at Roselyn Terrace, east side (Requires approval by the SFMTA Board)
- 14(c). ESTABLISH - CROSSWALK CLOSURE
Turk Blvd at Kittredge Terrace, west side (Requires approval by the SFMTA Board)
(Supervisor District 1) Elliot Goodrich, elliott.goodrich@sfmta.com



Conference Line: **1-888-398-2342** (use access code: 8647385)
To comment on an item, press "1" and then "0" when prompted.

**15. RESCIND – 25 MPH SPEED LIMIT
ESTABLISH – 20 MPH SPEED LIMIT**

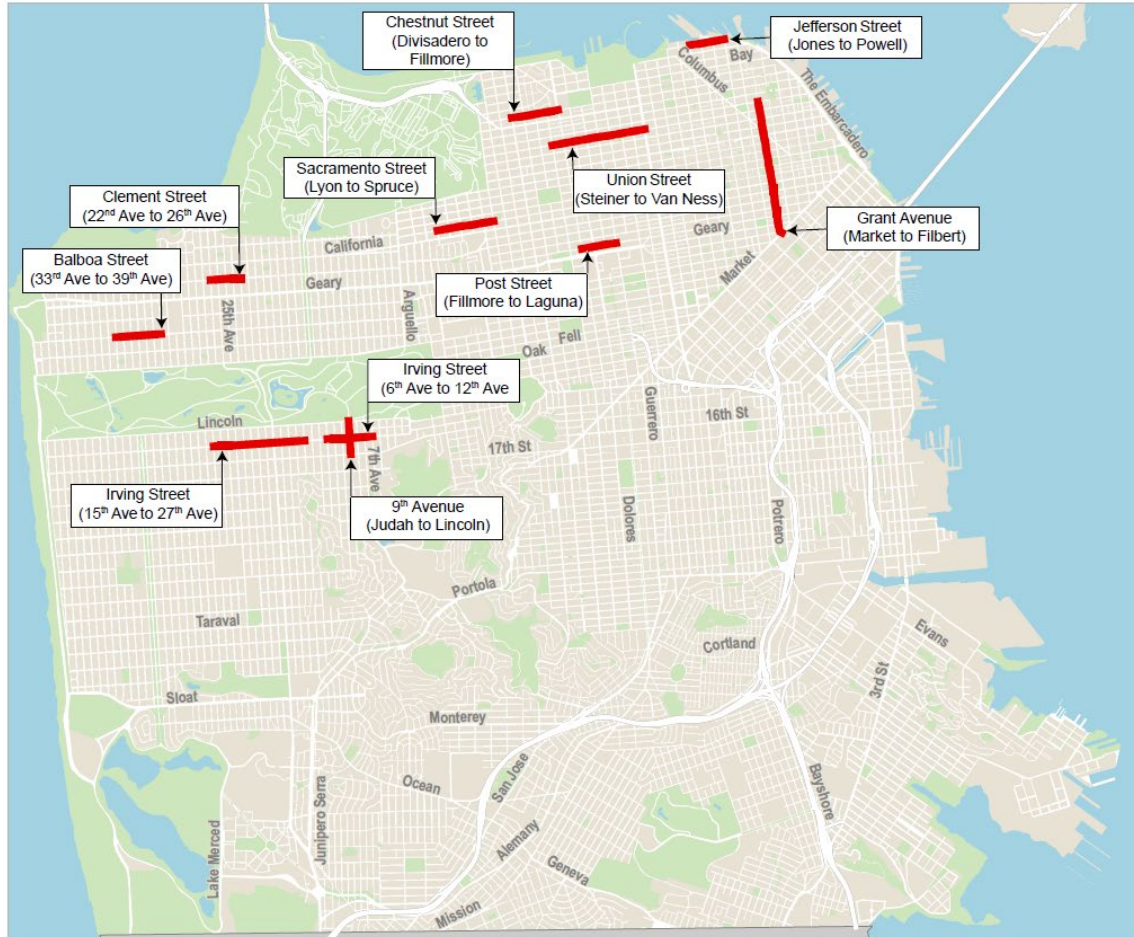
- A. 9th Avenue, between Lincoln Way and Judah Street (Supervisor District 5)
 - B. Balboa Street, between 33rd Avenue and 39th Avenue (Supervisor District 1)
 - C. Chestnut Street, between Divisadero Street and Fillmore Street (Supervisor District 2)
 - D. Clement Street, between 26th Avenue and 22nd Avenue (Supervisor District 1)
 - E. Grant Avenue, between Market Street and Filbert Street (Supervisor District 3)
 - F. Irving Street, between 27th Avenue and 15th Avenue (Supervisor Districts 4 and 5)
 - G. Irving Street, between 12th Avenue and 6th Avenue (Supervisor District 5)
 - H. Jefferson Street, between Jones Street and Powell Street (Supervisor District 3)
 - I. Post Street, between Laguna Street and Fillmore Street (Supervisor District 5)
 - J. Sacramento Street, between Spruce Street and Lyon Street (Supervisor District 2)
 - K. Union Street, between Steiner Street and Van Ness Avenue (Supervisor District 2)
- (Requires approval by the SFMTA Board) Jeffrey Tom, Jeffrey.tom@sfmta.com



Conference Line: **1-888-398-2342** (use access code: 8647385)


To comment on an item, press "1" and then "0" when prompted.


15. RESCIND – 25 MPH SPEED LIMIT ESTABLISH – 20 MPH SPEED LIMIT



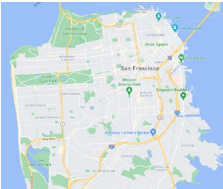
Proposed Business Activity District Speed Limit Reductions

April 2022

 Proposed 20 MPH Corridor

 0.9 miles
Scale 1:46,171

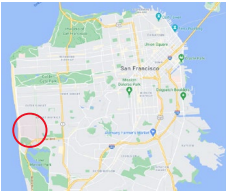
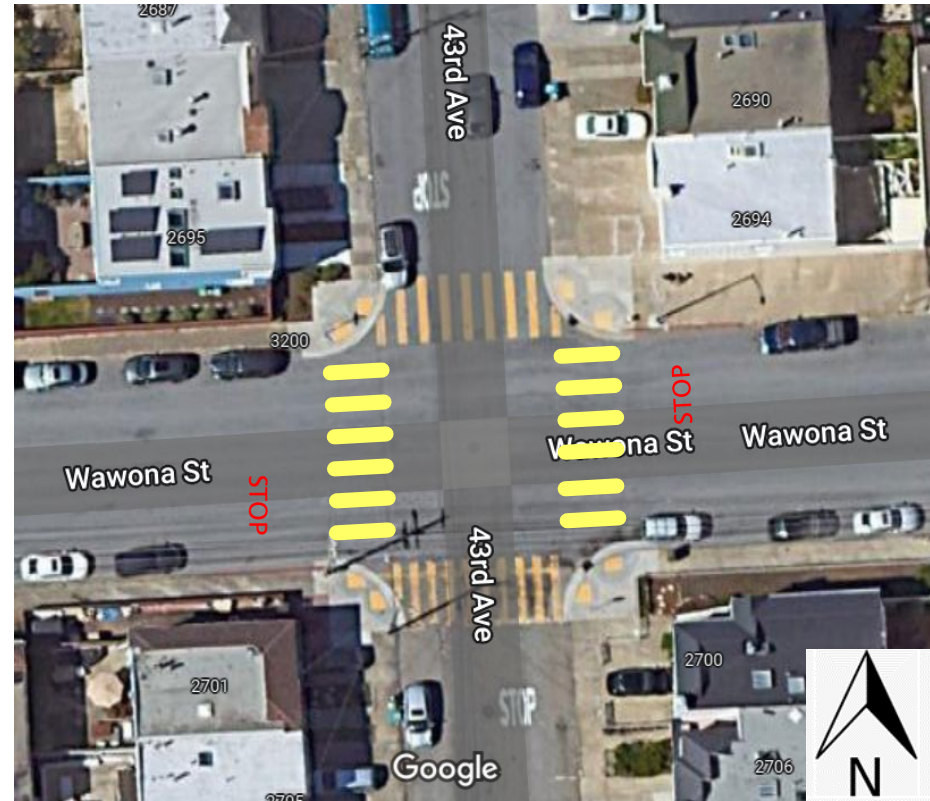
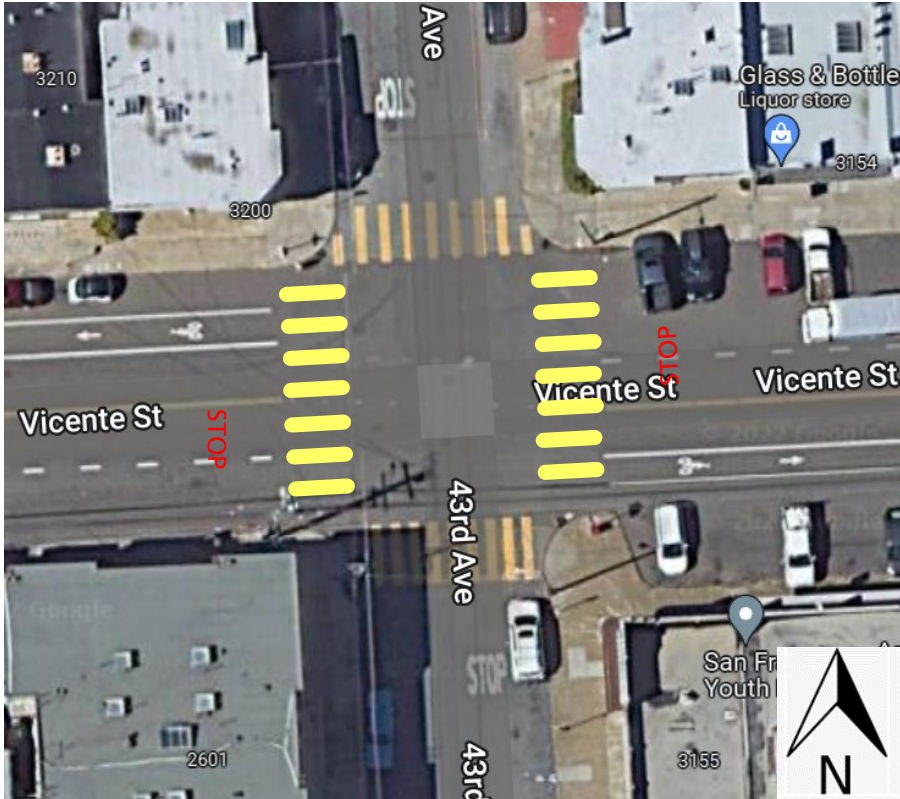
By downloading this map, you are agreeing to the following disclaimer: "The City and County of San Francisco ("City") provides the following data as a public record and no rights of any kind are granted to any person by the City's provision of this data. The City and County of San Francisco ("City") makes no representation regarding and does not guarantee or otherwise warrant the accuracy or completeness of this data. Anyone who uses this data for any purpose whatsoever does so entirely at their own risk. The City shall not be liable or otherwise responsible for any loss, harm, claim or action of any kind from any person arising from the use of this data. By accessing this data, the person accessing it acknowledges that she or he has read and does so under the condition that she or he agrees to the contents and terms of this disclaimer."



Conference Line: **1-888-398-2342** (use access code: 8647385)
To comment on an item, press "1" and then "0" when prompted.

16. ESTABLISH – STOP SIGNS

Vicente Street, eastbound and westbound, at 43rd Avenue, making this intersection an all-way STOP
Wawona Street, eastbound and westbound, at 43rd Avenue, making this intersection an all-way STOP
(Supervisor District 4) (Approvable by the City Traffic Engineer) Jeffrey Tom, jeffrey.tom@sfmta.com

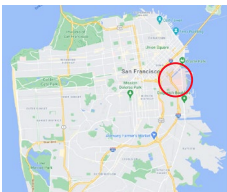


Conference Line: **1-888-398-2342** (use access code: 8647385)

To comment on an item, press "1" and then "0" when prompted.

17. ESTABLISH – STOP SIGNS

Long Bridge Street, eastbound and westbound, at Corinne Woods Way, making this intersection an all-way STOP (Supervisor District 6) (Approvable by the City Traffic Engineer) Jeffrey Tom, jeffrey.tom@sfmta.com

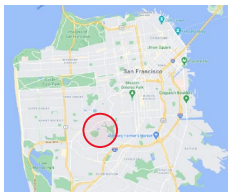


Conference Line: **1-888-398-2342** (use access code: 8647385)

To comment on an item, press "1" and then "0" when prompted.

18. ESTABLISH – TOW-AWAY, NO PARKING ANYTIME

Molimo Drive, west side, from north of 526 Molimo Drive to dead-end (100 feet total) (Supervisor District 7) (Requires approval by the SFMTA Board) Simon Qin, simon.qin@sfmta.com

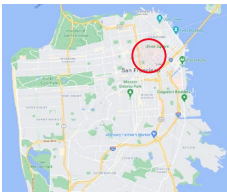
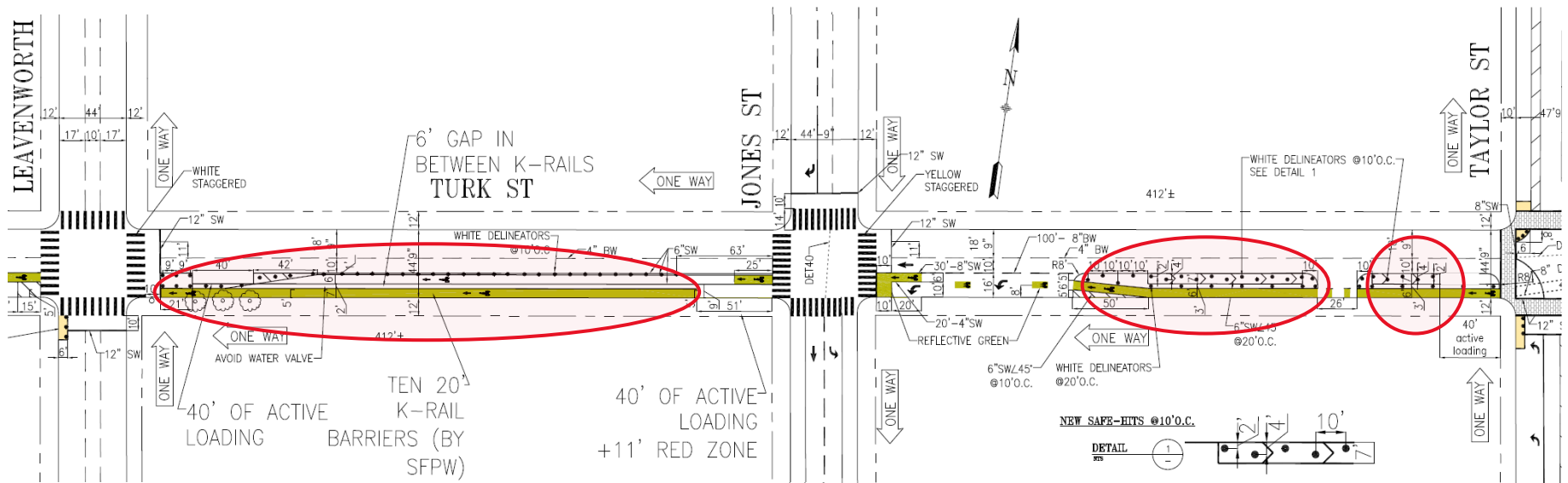


Conference Line: **1-888-398-2342** (use access code: 8647385)

To comment on an item, press "1" and then "0" when prompted.

20. ESTABLISH – TOW-AWAY, NO STOPPING ANYTIME

- A. Turk Street, south side, from 40 feet to 85 feet west of Taylor Street (removes Tow-Away No Parking Except Active Loading Zone)
 - B. Turk Street, south side, from 131 feet to 231 feet west of Taylor Street (removes Tow-Away No Parking Except Active Loading Zone)
 - C. Turk Street, south side, from 51 feet to 343 feet west of Jones Street (removes Tow-Away No Parking Except Active Loading Zone)
 - D. Turk Street, south side, from 172 feet to 217 feet west of Leavenworth Street (removes Tow-Away No Parking Except Active Loading Zone)
 - E. Turk Street, south side, from Dodge Place to 294 feet east of Dodge Place (removes Tow-Away No Parking Except Active Loading Zone)
- (Supervisor District 6) (Requires approval by the SFMTA Board) Shahram Shariati, Shahram.shariati@sfmta.com

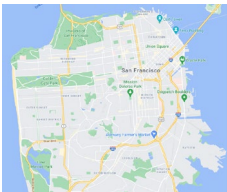
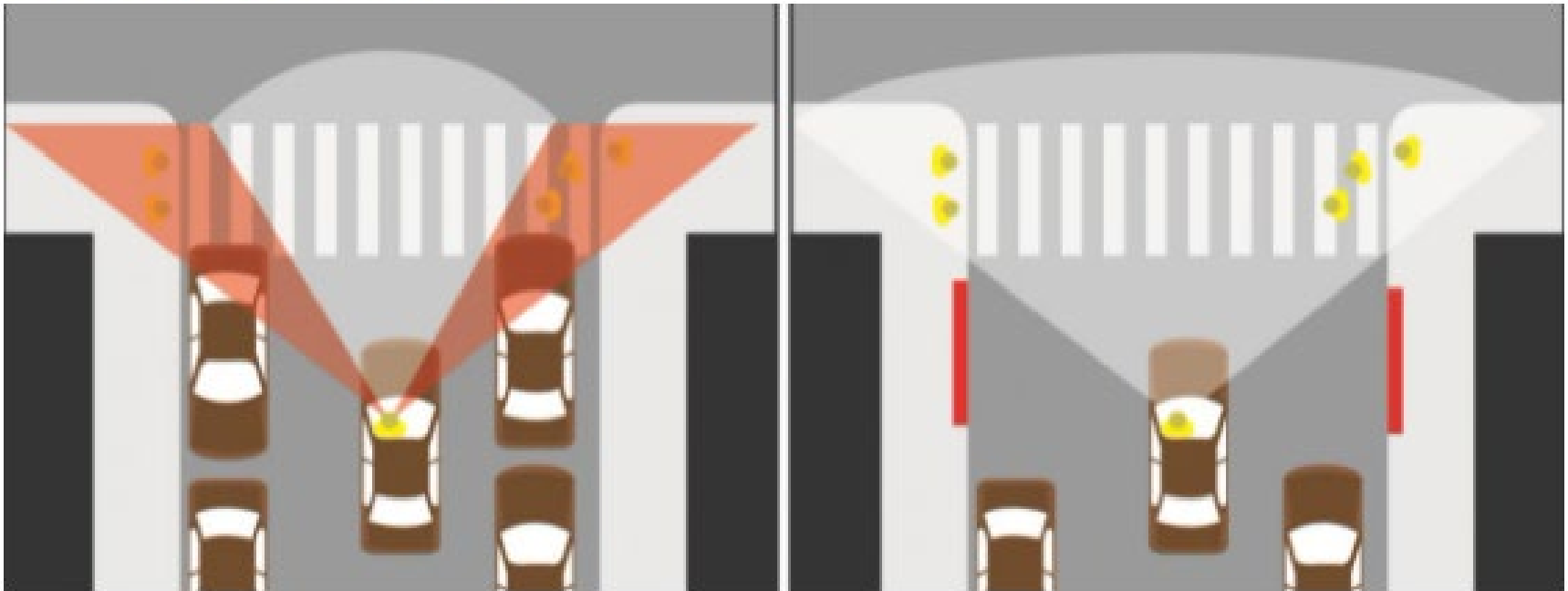


Conference Line: **1-888-398-2342** (use access code: 8647385)

To comment on an item, press "1" and then "0" when prompted.

DAYLIGHTING

How does it work?

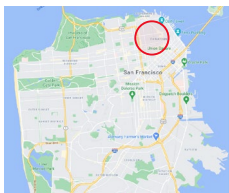
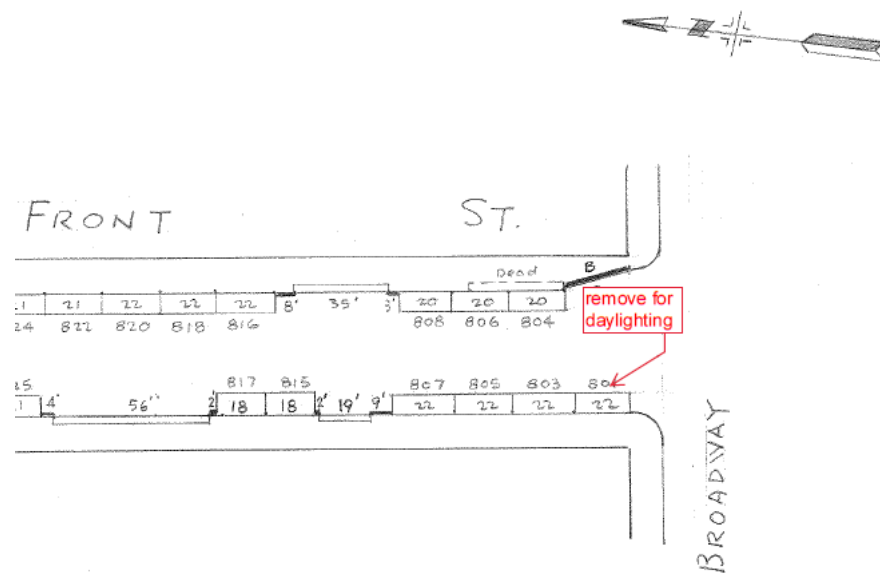
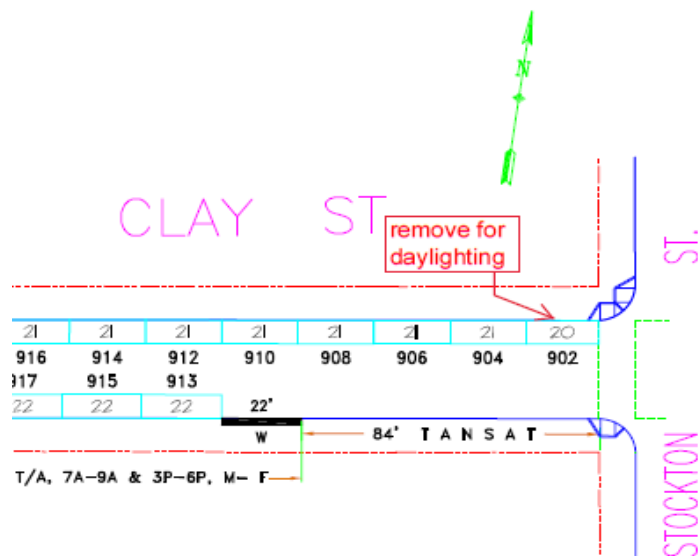


Conference Line: **1-888-398-2342** (use access code: 8647385)

To comment on an item, press "1" and then "0" when prompted.

21. ESTABLISH – RED ZONES

- A. Clay Street, north side, from Stockton Street to 20 feet westerly (rescinds meter #359-09020)
 - B. Front Street, west side, from Broadway to 22 feet northerly (rescinds meter #422-08010)
 - C. Kearny Street, east side, from 5 feet to 25 feet south of Broadway (rescinds meter #520-10320)
 - D. Powell Street, west side, from 4 feet to 22 feet north of Washington Street (rescinds meter #616-11010)
 - E. Columbus Avenue, south side, from 5 feet to 26 feet west of Lombard Street (rescinds meter #363-09010)
 - F. Vallejo Street, north side, from 12 feet to 18 feet east of Columbus Avenue (rescinds meter #705-06120)
 - G. Columbus Avenue, south side, from 2 feet to 20 feet west of Bay Street (rescinds meter #363-12010)
 - H. Leavenworth Street, east side, from 3 feet to 22 feet south of Beach Street (rescinds meter #546-27280)
- (Supervisor District 3) (Approvable by the City Traffic Engineer) Maurice Growney, Maurice.Growney@sfmta.com

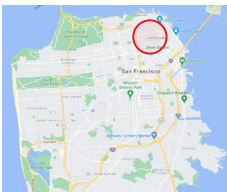
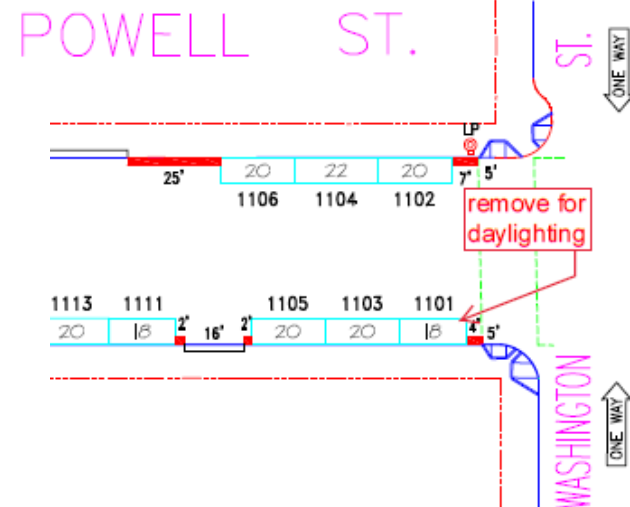
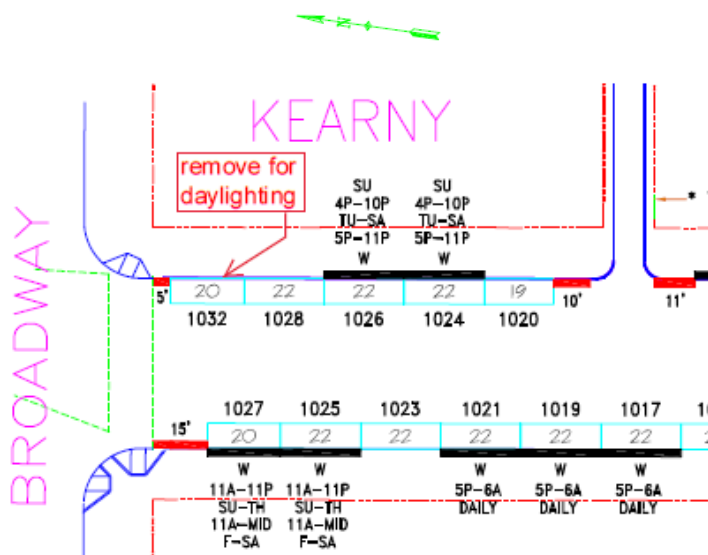


Conference Line: **1-888-398-2342** (use access code: 8647385)

To comment on an item, press "1" and then "0" when prompted.

21. ESTABLISH – RED ZONES

- A. Clay Street, north side, from Stockton Street to 20 feet westerly (rescinds meter #359-09020)
 - B. Front Street, west side, from Broadway to 22 feet northerly (rescinds meter #422-08010)
 - C. **Kearny Street, east side, from 5 feet to 25 feet south of Broadway (rescinds meter #520-10320)**
 - D. **Powell Street, west side, from 4 feet to 22 feet north of Washington Street (rescinds meter #616-11010)**
 - E. Columbus Avenue, south side, from 5 feet to 26 feet west of Lombard Street (rescinds meter #363-09010)
 - F. Vallejo Street, north side, from 12 feet to 18 feet east of Columbus Avenue (rescinds meter #705-06120)
 - G. Columbus Avenue, south side, from 2 feet to 20 feet west of Bay Street (rescinds meter #363-12010)
 - H. Leavenworth Street, east side, from 3 feet to 22 feet south of Beach Street (rescinds meter #546-27280)
- (Supervisor District 3) (Approvable by the City Traffic Engineer) Maurice Growney, Maurice.Growney@sfmta.com

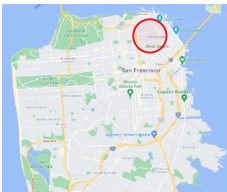
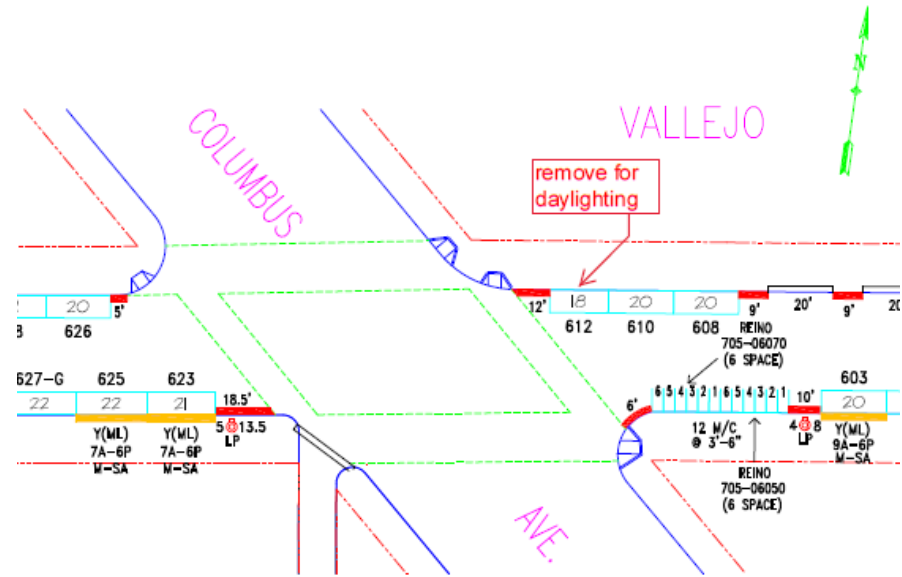
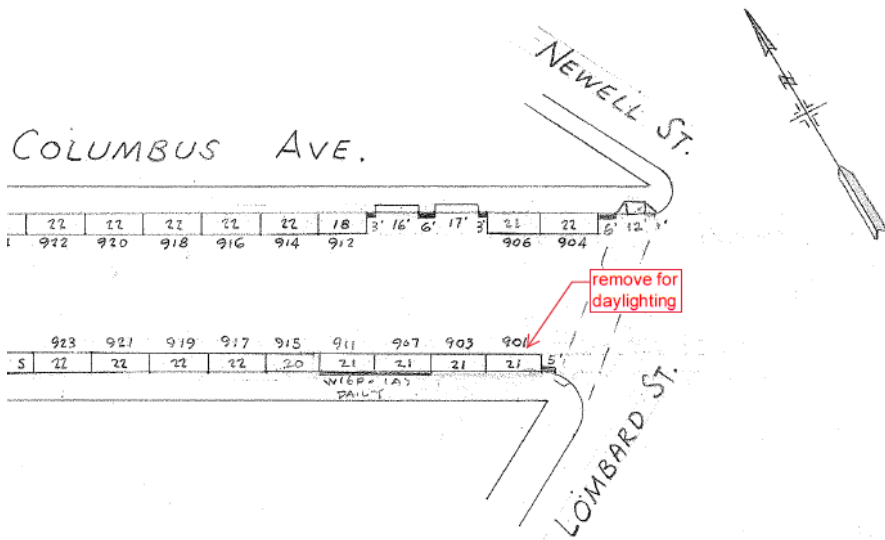


Conference Line: **1-888-398-2342** (use access code: 8647385)

To comment on an item, press "1" and then "0" when prompted.

21. ESTABLISH – RED ZONES

- A. Clay Street, north side, from Stockton Street to 20 feet westerly (rescinds meter #359-09020)
 - B. Front Street, west side, from Broadway to 22 feet northerly (rescinds meter #422-08010)
 - C. Kearny Street, east side, from 5 feet to 25 feet south of Broadway (rescinds meter #520-10320)
 - D. Powell Street, west side, from 4 feet to 22 feet north of Washington Street (rescinds meter #616-11010)
 - E. Columbus Avenue, south side, from 5 feet to 26 feet west of Lombard Street (rescinds meter #363-09010)**
 - F. Vallejo Street, north side, from 12 feet to 18 feet east of Columbus Avenue (rescinds meter #705-06120)**
 - G. Columbus Avenue, south side, from 2 feet to 20 feet west of Bay Street (rescinds meter #363-12010)
 - H. Leavenworth Street, east side, from 3 feet to 22 feet south of Beach Street (rescinds meter #546-27280)
- (Supervisor District 3) (Approvable by the City Traffic Engineer) Maurice Growney, Maurice.Growney@sfmta.com

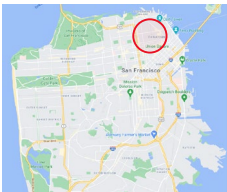
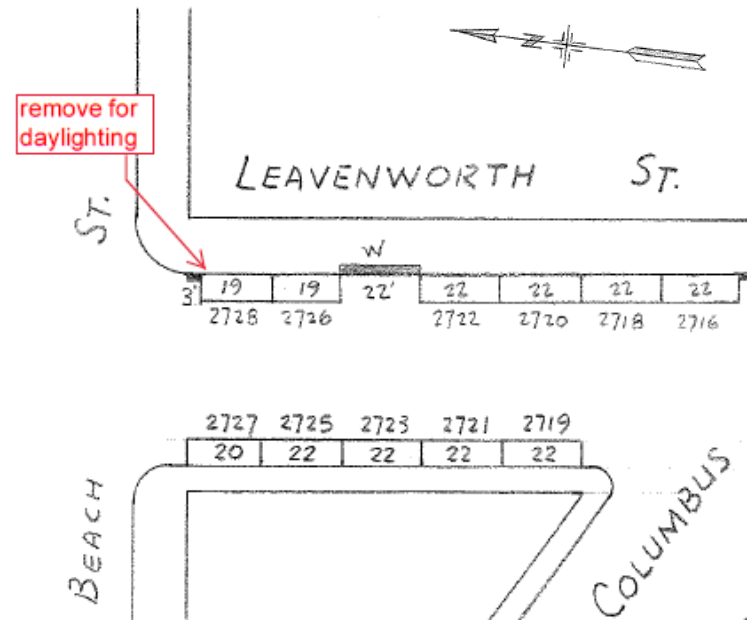
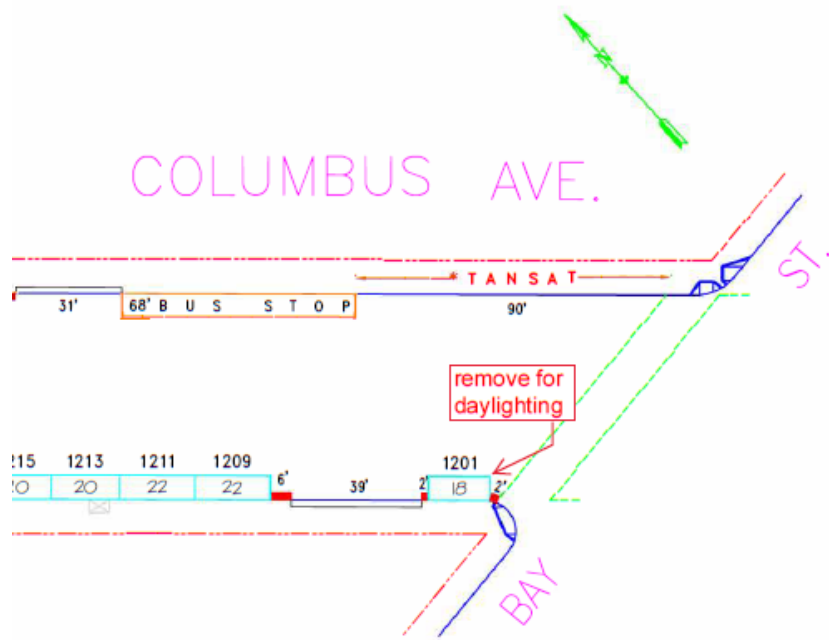


Conference Line: **1-888-398-2342** (use access code: 8647385)

To comment on an item, press "1" and then "0" when prompted.

21. ESTABLISH – RED ZONES

- A. Clay Street, north side, from Stockton Street to 20 feet westerly (rescinds meter #359-09020)
 - B. Front Street, west side, from Broadway to 22 feet northerly (rescinds meter #422-08010)
 - C. Kearny Street, east side, from 5 feet to 25 feet south of Broadway (rescinds meter #520-10320)
 - D. Powell Street, west side, from 4 feet to 22 feet north of Washington Street (rescinds meter #616-11010)
 - E. Columbus Avenue, south side, from 5 feet to 26 feet west of Lombard Street (rescinds meter #363-09010)
 - F. Vallejo Street, north side, from 12 feet to 18 feet east of Columbus Avenue (rescinds meter #705-06120)
 - G. **Columbus Avenue, south side, from 2 feet to 20 feet west of Bay Street (rescinds meter #363-12010)**
 - H. **Leavenworth Street, east side, from 3 feet to 22 feet south of Beach Street (rescinds meter #546-27280)**
- (Supervisor District 3) (Approvable by the City Traffic Engineer) Maurice Growney, Maurice.Growney@sfmta.com

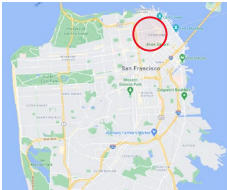
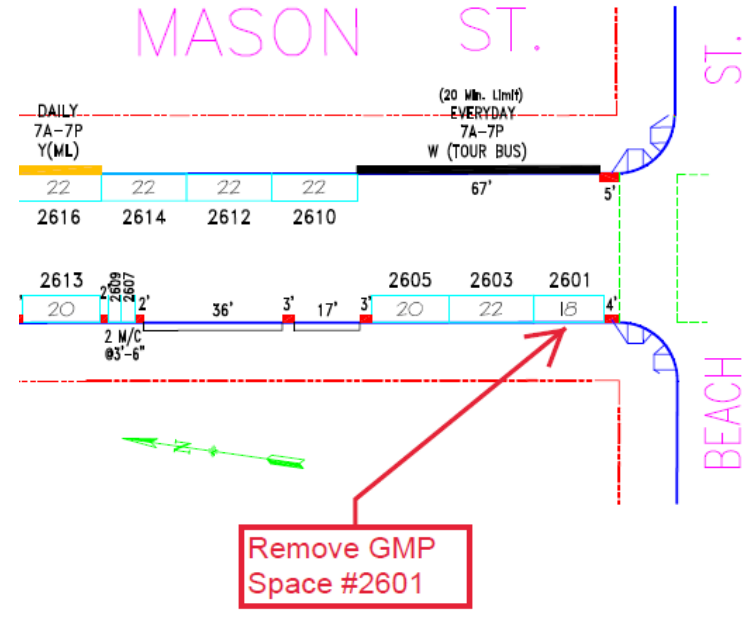
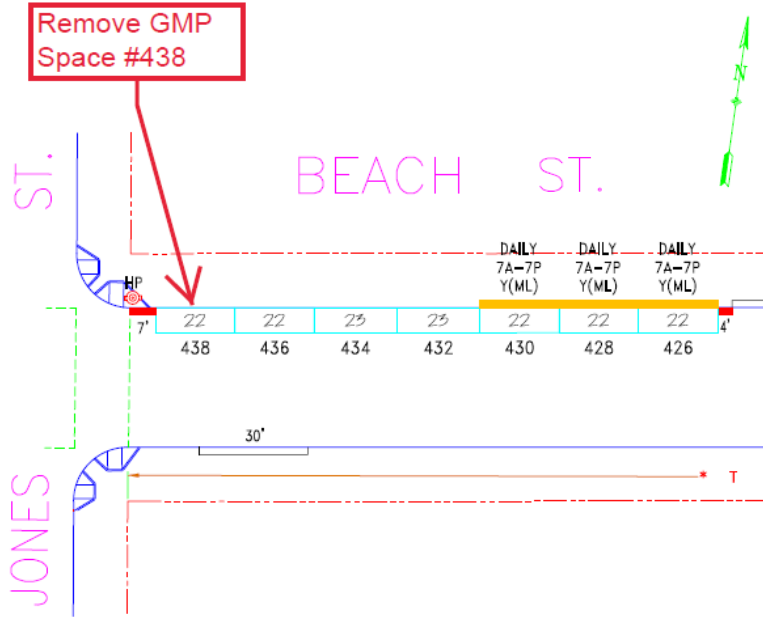


Conference Line: **1-888-398-2342** (use access code: 8647385)

To comment on an item, press "1" and then "0" when prompted.

22. ESTABLISH – RED ZONES

- A. Beach Street, north side, from 7 feet east of Jones Street to 22 feet easterly (removes General Metered Parking Space #438)
 - B. Mason Street, west side, from 4 feet north of Beach Street to 18 feet northerly (removes General Metered Parking Space #2601)
 - C. Columbus Avenue, east side, from 9 feet south of North Point Street to 20 feet southerly (removes General Metered Parking Space #1228)
 - D. Columbus Avenue, west side, from 10 feet north of Leavenworth Street to 18 feet northerly (removes General Metered Parking Space #1313)
 - E. California Street, north side, from Stockton Street to 22 feet easterly (removes General Metered Parking Space #748)
 - F. Vallejo Street, south side, from 5 feet west of Stockton Street to 19 feet westerly (removes General Metered Parking Space #701)
 - G. Vallejo Street, north side, from 5 feet east of Stockton Street to 20 feet easterly (removes General Metered Parking Space #638)
 - H. Taylor Street, west side, from 3 feet north of Beach Street to 18 feet northerly (removes General Metered Parking Space #2701)
 - I. Grant Avenue, east side, from 5 feet south of Post Street to 20 feet southerly (removes General Metered Parking Space #128)
 - J. Pine Street, north side, from Stockton Street to 20 feet easterly (removes General Metered Parking Space #648)
- (Supervisor District 3) (Approvable by the City Traffic Engineer) Shahram Shariati, Shahram.Shariati@sfmta.com

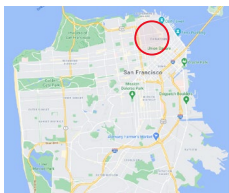
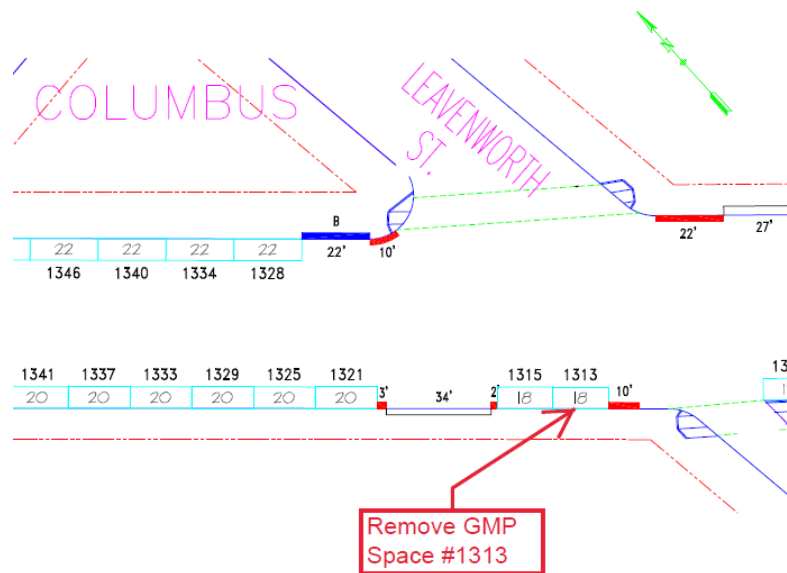
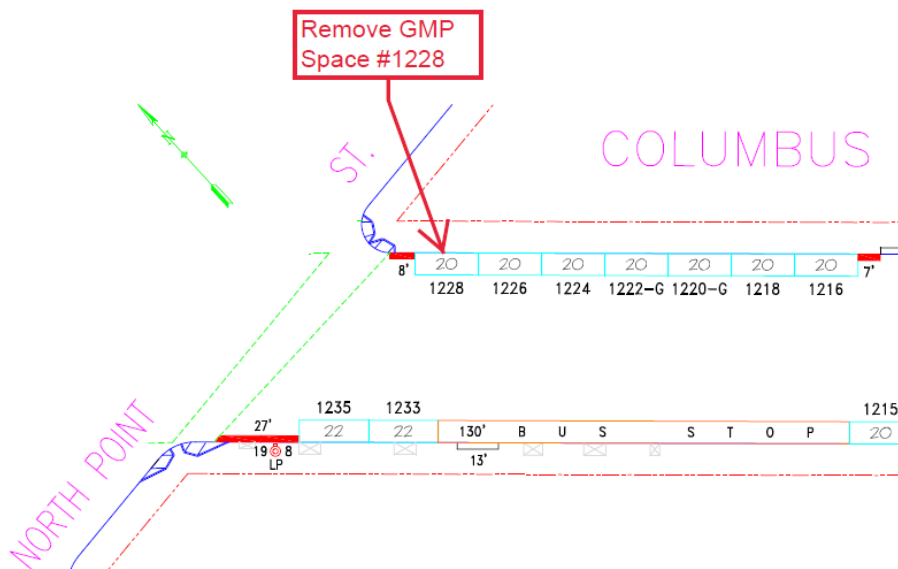


Conference Line: **1-888-398-2342** (use access code: 8647385)

To comment on an item, press "1" and then "0" when prompted.

22. ESTABLISH – RED ZONES

- A. Beach Street, north side, from 7 feet east of Jones Street to 22 feet easterly (removes General Metered Parking Space #438)
 - B. Mason Street, west side, from 4 feet north of Beach Street to 18 feet northerly (removes General Metered Parking Space #2601)
 - C. Columbus Avenue, east side, from 9 feet south of North Point Street to 20 feet southerly (removes General Metered Parking Space #1228)
 - D. Columbus Avenue, west side, from 10 feet north of Leavenworth Street to 18 feet northerly (removes General Metered Parking Space #1313)
 - E. California Street, north side, from Stockton Street to 22 feet easterly (removes General Metered Parking Space #748)
 - F. Vallejo Street, south side, from 5 feet west of Stockton Street to 19 feet westerly (removes General Metered Parking Space #701)
 - G. Vallejo Street, north side, from 5 feet east of Stockton Street to 20 feet easterly (removes General Metered Parking Space #638)
 - H. Taylor Street, west side, from 3 feet north of Beach Street to 18 feet northerly (removes General Metered Parking Space #2701)
 - I. Grant Avenue, east side, from 5 feet south of Post Street to 20 feet southerly (removes General Metered Parking Space #128)
 - J. Pine Street, north side, from Stockton Street to 20 feet easterly (removes General Metered Parking Space #648)
- (Supervisor District 3) (Approvable by the City Traffic Engineer) Shahram Shariati, Shahram.Shariati@sfmta.com

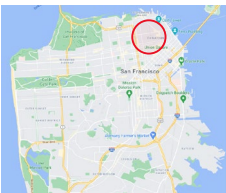
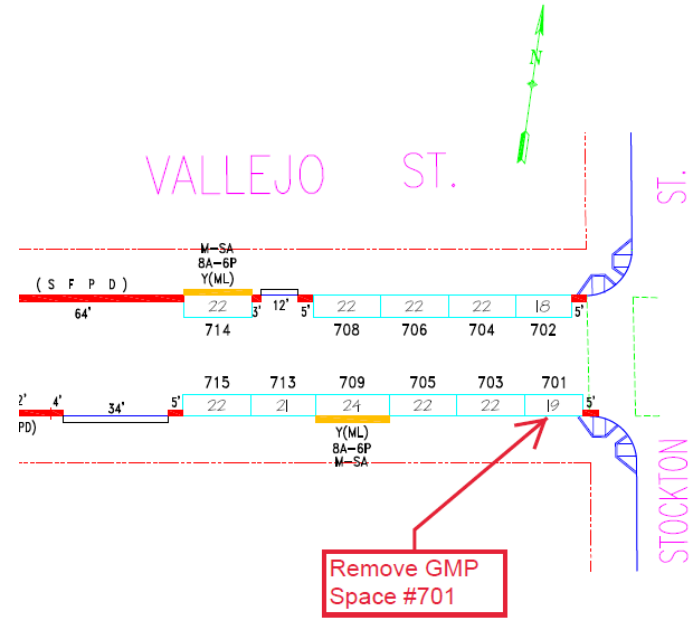
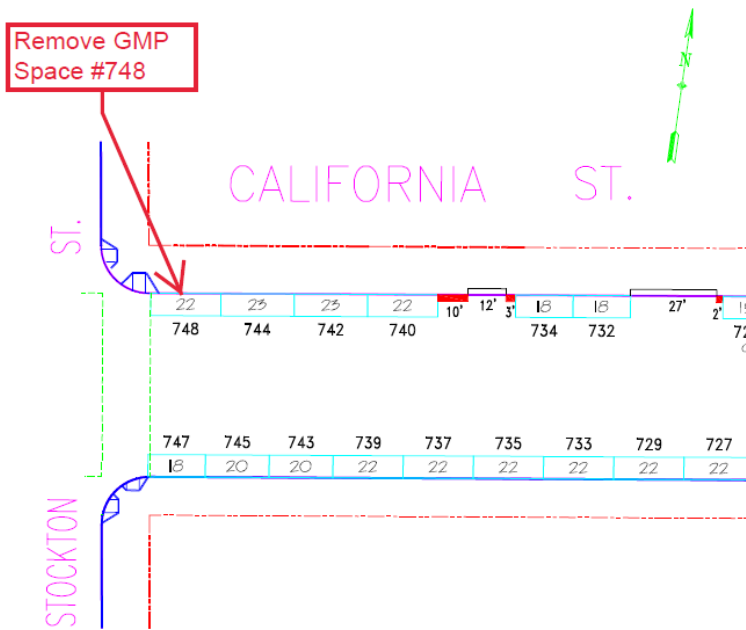


Conference Line: **1-888-398-2342** (use access code: 8647385)

To comment on an item, press "1" and then "0" when prompted.

22. ESTABLISH – RED ZONES

- A. Beach Street, north side, from 7 feet east of Jones Street to 22 feet easterly (removes General Metered Parking Space #438)
 - B. Mason Street, west side, from 4 feet north of Beach Street to 18 feet northerly (removes General Metered Parking Space #2601)
 - C. Columbus Avenue, east side, from 9 feet south of North Point Street to 20 feet southerly (removes General Metered Parking Space #1228)
 - D. Columbus Avenue, west side, from 10 feet north of Leavenworth Street to 18 feet northerly (removes General Metered Parking Space #1313)
 - E. California Street, north side, from Stockton Street to 22 feet easterly (removes General Metered Parking Space #748)
 - F. Vallejo Street, south side, from 5 feet west of Stockton Street to 19 feet westerly (removes General Metered Parking Space #701)
 - G. Vallejo Street, north side, from 5 feet east of Stockton Street to 20 feet easterly (removes General Metered Parking Space #638)
 - H. Taylor Street, west side, from 3 feet north of Beach Street to 18 feet northerly (removes General Metered Parking Space #2701)
 - I. Grant Avenue, east side, from 5 feet south of Post Street to 20 feet southerly (removes General Metered Parking Space #128)
 - J. Pine Street, north side, from Stockton Street to 20 feet easterly (removes General Metered Parking Space #648)
- (Supervisor District 3) (Approvable by the City Traffic Engineer) Shahram Shariati, Shahram.Shariati@sfmta.com

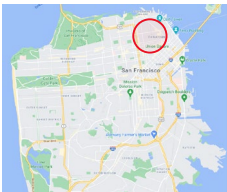
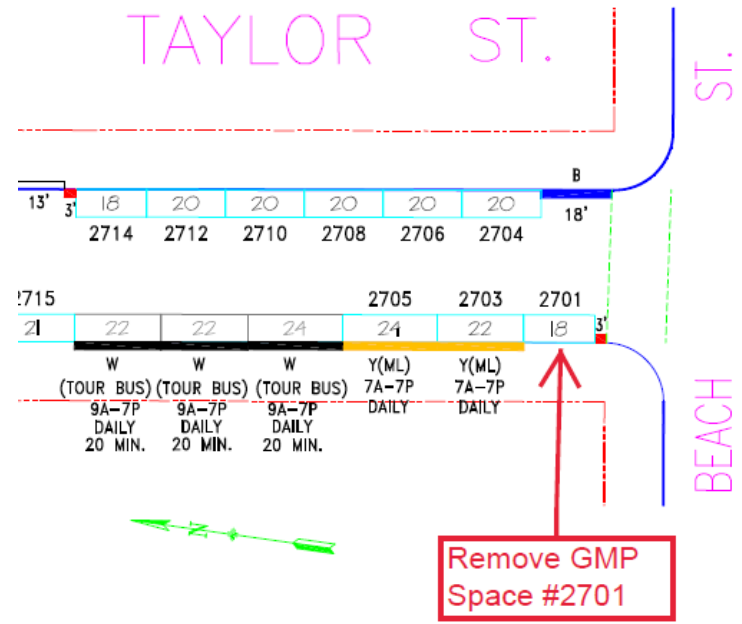
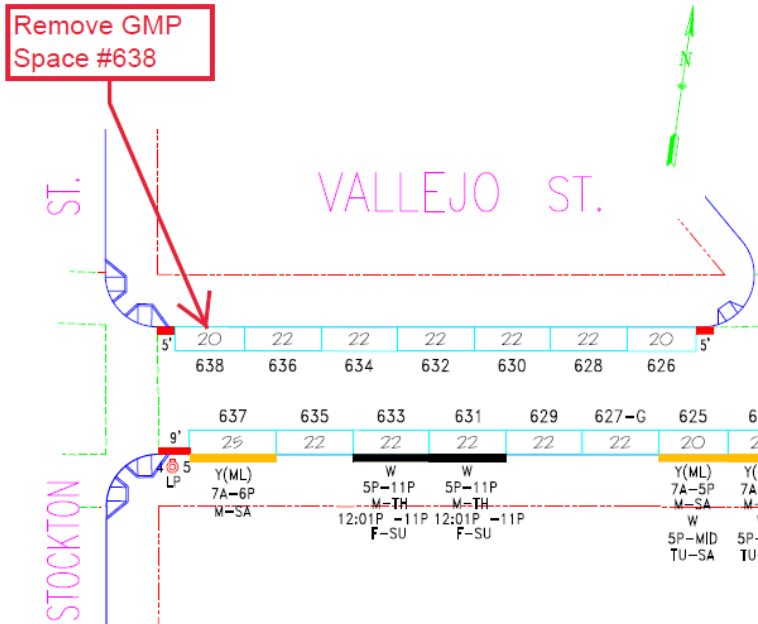


Conference Line: **1-888-398-2342** (use access code: 8647385)

To comment on an item, press "1" and then "0" when prompted.

22. ESTABLISH – RED ZONES

- A. Beach Street, north side, from 7 feet east of Jones Street to 22 feet easterly (removes General Metered Parking Space #438)
 - B. Mason Street, west side, from 4 feet north of Beach Street to 18 feet northerly (removes General Metered Parking Space #2601)
 - C. Columbus Avenue, east side, from 9 feet south of North Point Street to 20 feet southerly (removes General Metered Parking Space #1228)
 - D. Columbus Avenue, west side, from 10 feet north of Leavenworth Street to 18 feet northerly (removes General Metered Parking Space #1313)
 - E. California Street, north side, from Stockton Street to 22 feet easterly (removes General Metered Parking Space #748)
 - F. Vallejo Street, south side, from 5 feet west of Stockton Street to 19 feet westerly (removes General Metered Parking Space #701)
 - G. Vallejo Street, north side, from 5 feet east of Stockton Street to 20 feet easterly (removes General Metered Parking Space #638)**
 - H. Taylor Street, west side, from 3 feet north of Beach Street to 18 feet northerly (removes General Metered Parking Space #2701)**
 - I. Grant Avenue, east side, from 5 feet south of Post Street to 20 feet southerly (removes General Metered Parking Space #128)
 - J. Pine Street, north side, from Stockton Street to 20 feet easterly (removes General Metered Parking Space #648)
- (Supervisor District 3) (Approvable by the City Traffic Engineer) Shahram Shariati, Shahram.Shariati@sfmta.com



Conference Line: **1-888-398-2342** (use access code: 8647385)

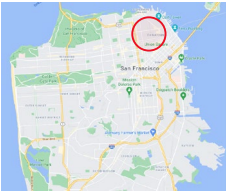
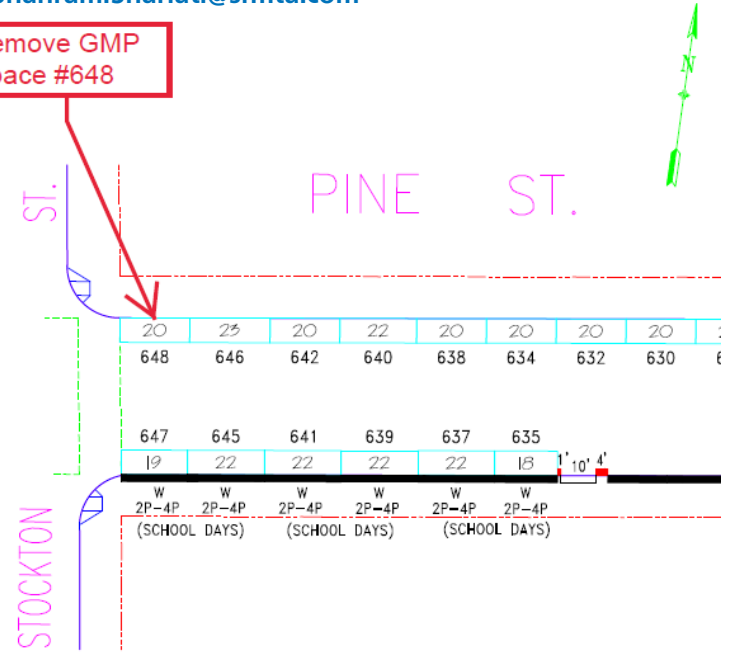
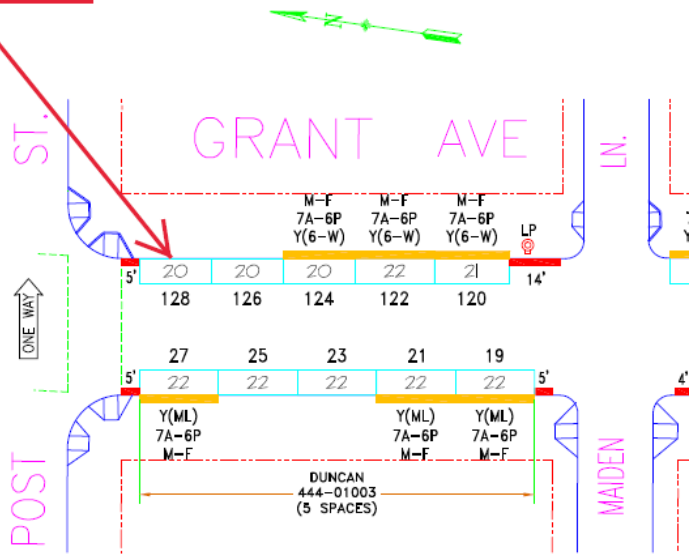
To comment on an item, press "1" and then "0" when prompted.

22. ESTABLISH – RED ZONES

- A. Beach Street, north side, from 7 feet east of Jones Street to 22 feet easterly (removes General Metered Parking Space #438)
 - B. Mason Street, west side, from 4 feet north of Beach Street to 18 feet northerly (removes General Metered Parking Space #2601)
 - C. Columbus Avenue, east side, from 9 feet south of North Point Street to 20 feet southerly (removes General Metered Parking Space #1228)
 - D. Columbus Avenue, west side, from 10 feet north of Leavenworth Street to 18 feet northerly (removes General Metered Parking Space #1313)
 - E. California Street, north side, from Stockton Street to 22 feet easterly (removes General Metered Parking Space #748)
 - F. Vallejo Street, south side, from 5 feet west of Stockton Street to 19 feet westerly (removes General Metered Parking Space #701)
 - G. Vallejo Street, north side, from 5 feet east of Stockton Street to 20 feet easterly (removes General Metered Parking Space #638)
 - H. Taylor Street, west side, from 3 feet north of Beach Street to 18 feet northerly (removes General Metered Parking Space #2701)
 - I. **Grant Avenue, east side, from 5 feet south of Post Street to 20 feet southerly (removes General Metered Parking Space #128)**
 - J. **Pine Street, north side, from Stockton Street to 20 feet easterly (removes General Metered Parking Space #648)**
- (Supervisor District 3) (Approvable by the City Traffic Engineer) Shahram Shariati, Shahram.Shariati@sfmta.com

Remove GMP Space #128

Remove GMP Space #648

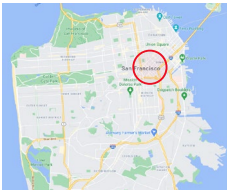
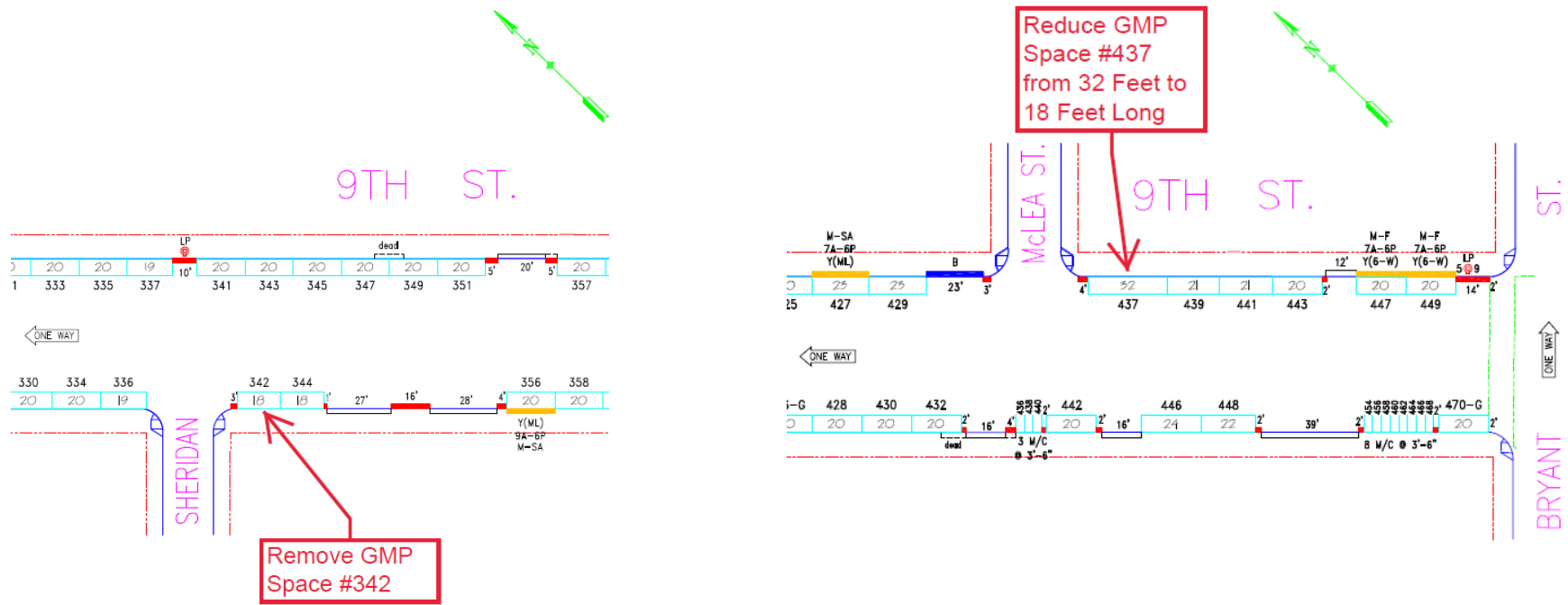


Conference Line: **1-888-398-2342** (use access code: 8647385)

To comment on an item, press "1" and then "0" when prompted.

23. ESTABLISH – RED ZONES

- A. 9th Street, west side, from 3 feet south of Sheridan Street to 18 feet southerly (removes General Metered Parking Space #342)
 - B. 9th Street, east side, from 4 feet south of McLea Street to 14 feet southerly (reduces General Metered Parking Space #437 from 32 feet to 18 feet long)
 - C. 9th Street, east side, from Bryant Street to 20 feet southerly (removes General Metered Parking Space #501 and reduces General Metered Parking Space #503 from 20 feet to 18 feet long)
 - D. 11th Street, east side, from Kissling Street to 19 feet southerly (removes General Metered Parking Space #223)
 - E. 11th Street, west side, from Harrison Street to 20 feet northerly (removes General Metered Parking Space #356)
- (Supervisor District 6) (Approvable by the City Traffic Engineer) Shahram Shariati, Shahram.Shariati@sfmta.com

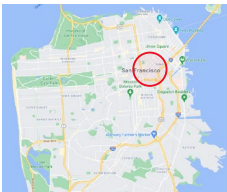
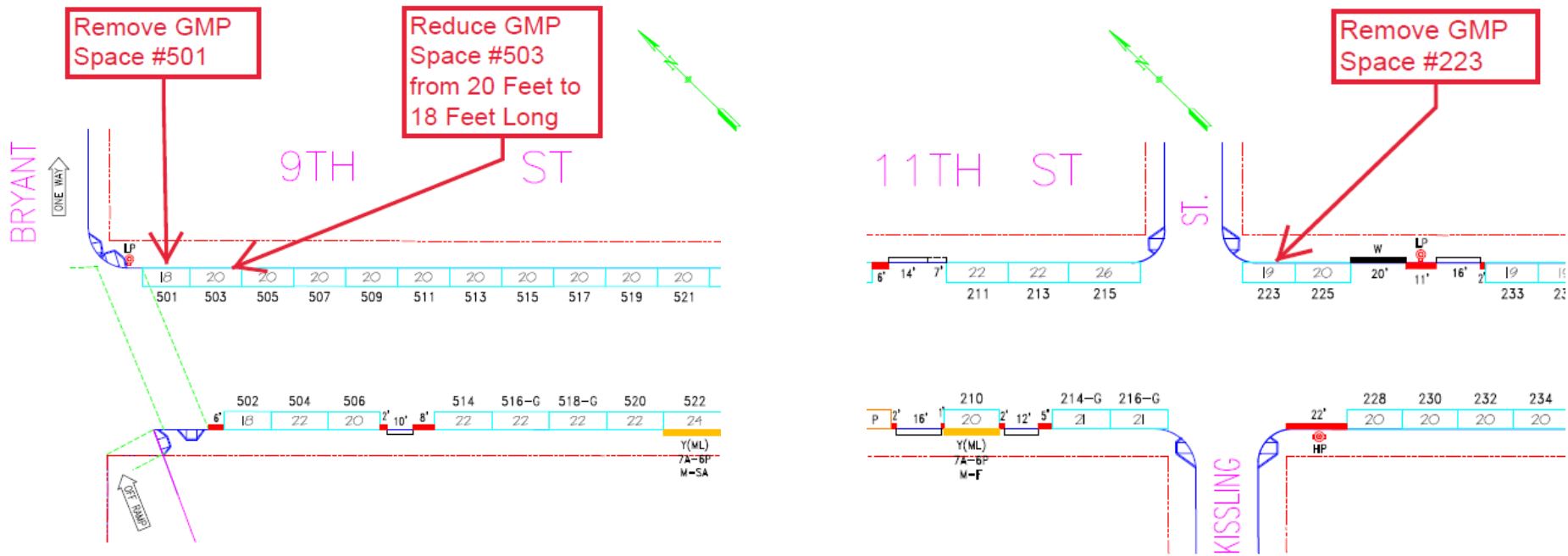


Conference Line: **1-888-398-2342** (use access code: 8647385)

To comment on an item, press "1" and then "0" when prompted.

23. ESTABLISH – RED ZONES

- A. 9th Street, west side, from 3 feet south of Sheridan Street to 18 feet southerly (removes General Metered Parking Space #342)
 - B. 9th Street, east side, from 4 feet south of McLea Street to 14 feet southerly (reduces General Metered Parking Space #437 from 32 feet to 18 feet long)
 - C. 9th Street, east side, from Bryant Street to 20 feet southerly (removes General Metered Parking Space #501 and reduces General Metered Parking Space #503 from 20 feet to 18 feet long)
 - D. 11th Street, east side, from Kissling Street to 19 feet southerly (removes General Metered Parking Space #223)
 - E. 11th Street, west side, from Harrison Street to 20 feet northerly (removes General Metered Parking Space #356)
- (Supervisor District 6) (Approvable by the City Traffic Engineer) Shahram Shariati, Shahram.Shariati@sfmta.com

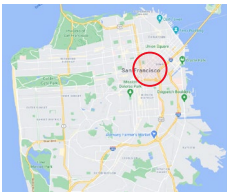
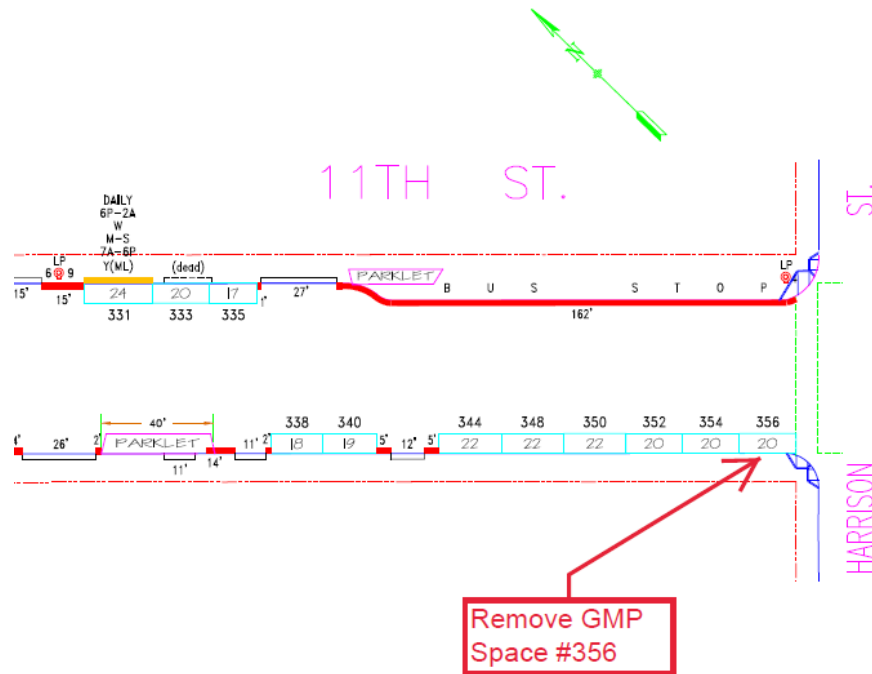


Conference Line: **1-888-398-2342** (use access code: 8647385)

To comment on an item, press "1" and then "0" when prompted.

23. ESTABLISH – RED ZONES

- A. 9th Street, west side, from 3 feet south of Sheridan Street to 18 feet southerly (removes General Metered Parking Space #342)
- B. 9th Street, east side, from 4 feet south of McLea Street to 14 feet southerly (reduces General Metered Parking Space #437 from 32 feet to 18 feet long)
- C. 9th Street, east side, from Bryant Street to 20 feet southerly (removes General Metered Parking Space #501 and reduces General Metered Parking Space #503 from 20 feet to 18 feet long)
- D. 11th Street, east side, from Kissling Street to 19 feet southerly (removes General Metered Parking Space #223)
- E. **11th Street, west side, from Harrison Street to 20 feet northerly (removes General Metered Parking Space #356)**
(Supervisor District 6) (Approvable by the City Traffic Engineer) Shahram Shariati, Shahram.Shariati@sfmta.com



Conference Line: **1-888-398-2342** (use access code: 8647385)



To comment on an item, press "1" and then "0" when prompted.



<https://www.sfmta.com/getting-around/bike/bike-share>

Shortcut!

Google

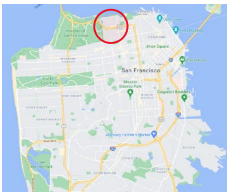
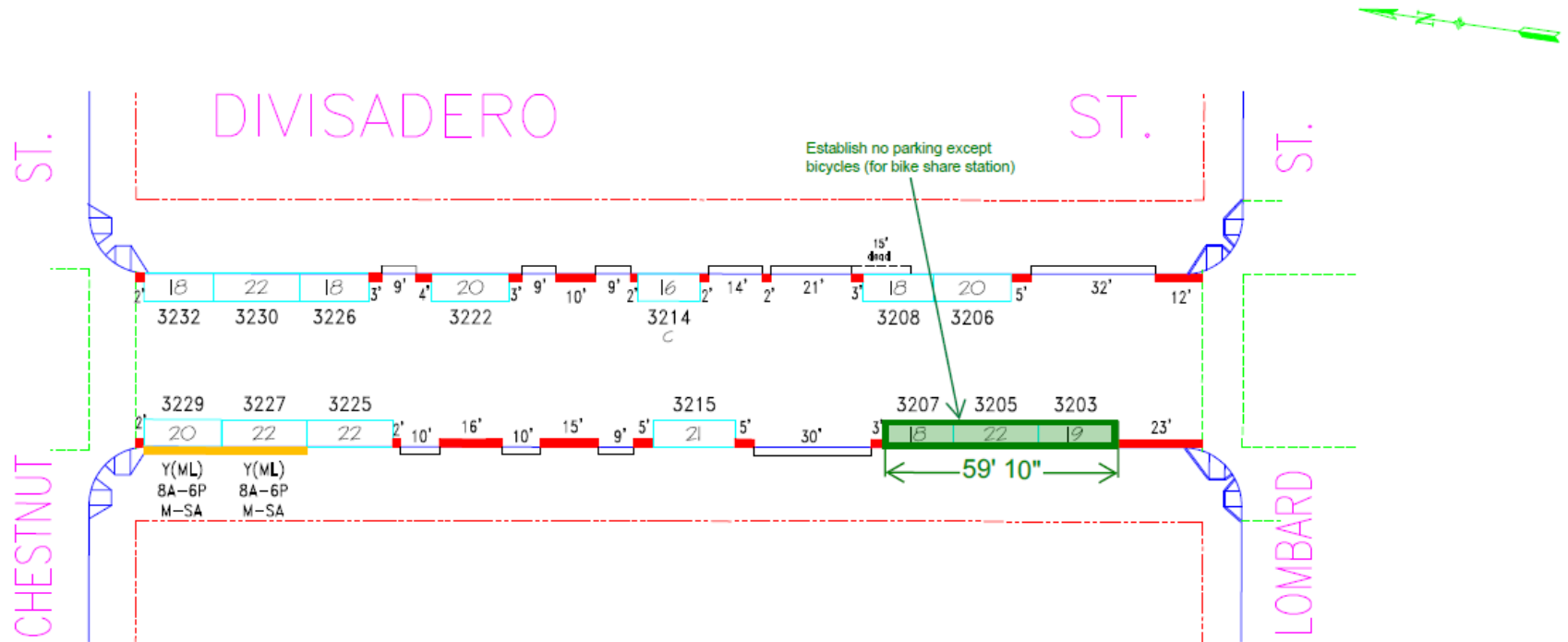
 sfmta.com/bikeshare 

Quick Links

[Overview](#) | [Equity](#) | [Bikeshare's Purpose](#) | [System Planning and Station Siting](#) | [Bay Area Bike Share Pilot](#) | [Stationless Bikeshare](#) | [Bikeshare Data](#)

**24. ESTABLISH – NO STOPPING EXCEPT BICYCLES
ESTABLISH – BIKE SHARE STATION**

Divisadero Street, west side, from 24 feet to 84 feet north of Lombard Street (60-foot bike share station in parking lane) (Supervisor District 2) (Approvable by the City Traffic Engineer) Laura Stonehill, laura.stonehill@sfmta.com

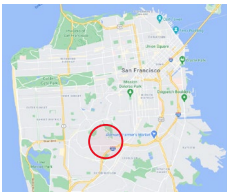
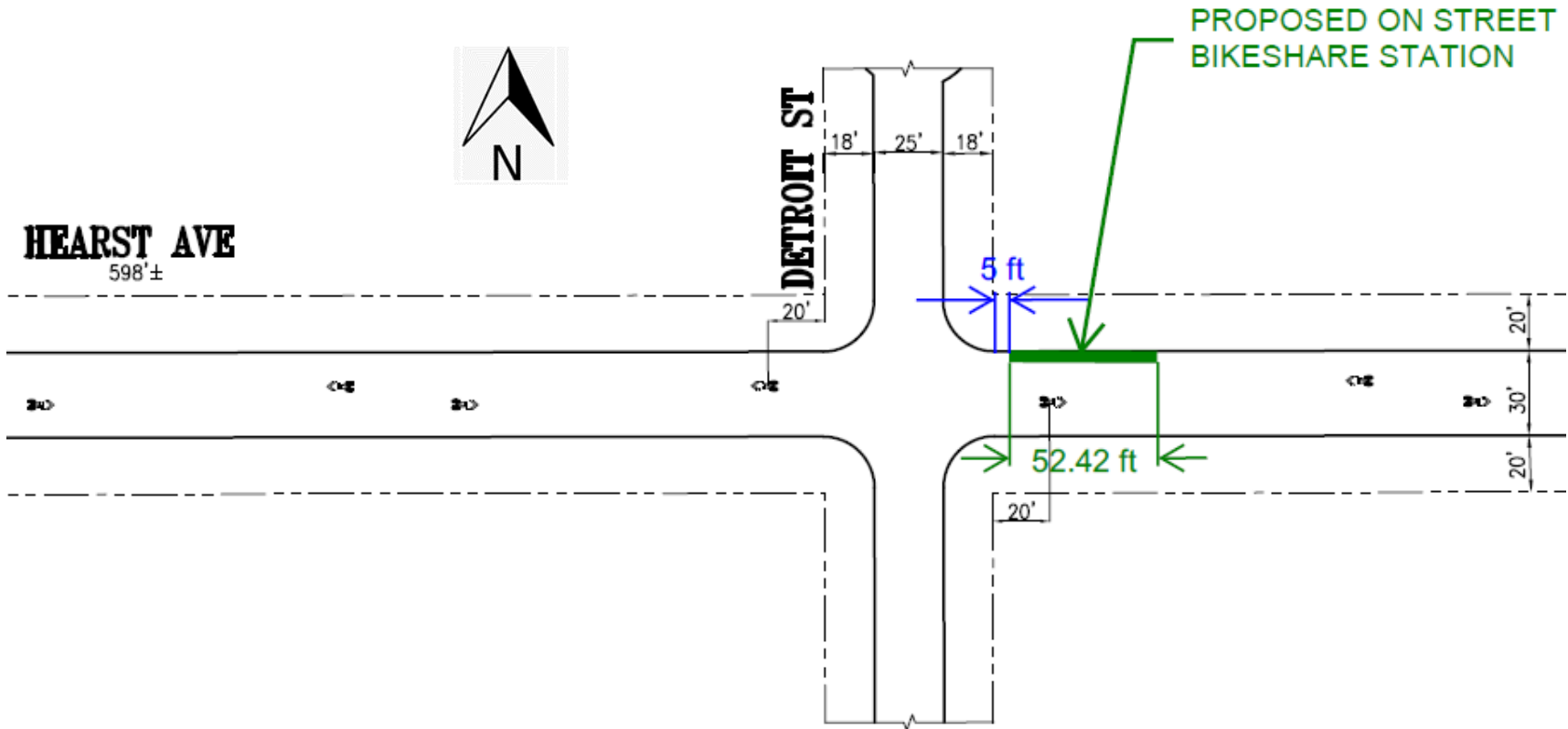


Conference Line: **1-888-398-2342** (use access code: 8647385)

To comment on an item, press "1" and then "0" when prompted.

**25. ESTABLISH – NO STOPPING EXCEPT BICYCLES
ESTABLISH – BIKE SHARE STATION**

Hearst Avenue, north side, from Detroit Street to 64 feet easterly (52-foot bike share station with red zones on either end) (Supervisor District 7) (Approvable by the City Traffic Engineer) Laura Stonehill, laura.stonehill@sfmta.com



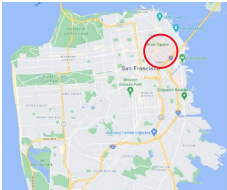
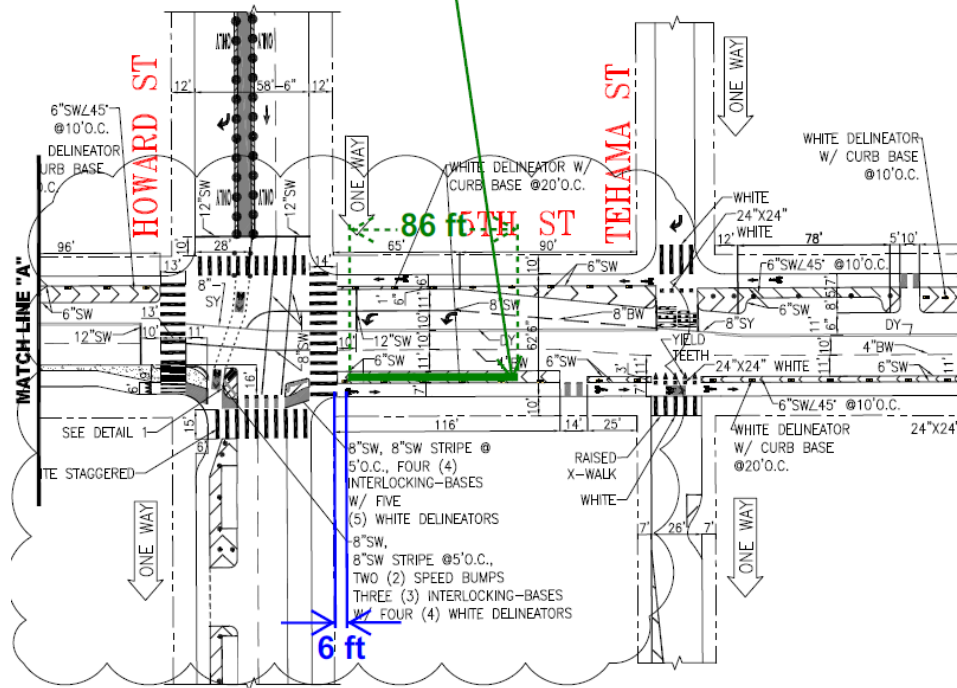
Conference Line: **1-888-398-2342** (use access code: 8647385)

To comment on an item, press "1" and then "0" when prompted.

26. ESTABLISH – NO STOPPING EXCEPT BICYCLES ESTABLISH – BIKE SHARE STATION

5th Street, west side, from 6 feet to 92 feet south of Howard Street (86-foot bike share station with angled plates in floating buffer) (Supervisor District 6) (Approvable by the City Traffic Engineer) Laura Stonehill, laura.stonehill@sfmta.com

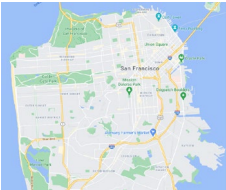
Proposed On-Street Bike Share Station



Conference Line: **1-888-398-2342** (use access code: 8647385)

To comment on an item, press "1" and then "0" when prompted.

PUBLIC COMMENT



Conference Line: **1-888-398-2342** (use access code: 8647385)

To comment on an item, press "1" and then "0" when prompted.


Public Hearing Decision Posting


Results will be posted by
5 PM next Friday

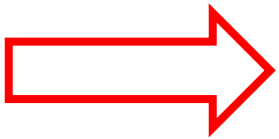
<https://www.sfmta.com/calendar/engineering-public-hearing-meeting-april-8-2022>

Referenced Materials

Engineering Public Hearing Agenda, December 17, 2021

 Engineering Public Hearing Agenda, December 17, 2021

 Engineering Public Hearing Results, December 17, 2021





SFMTA

Next Engineering Public Hearing April 22, 2022

<https://sfmta.com/enghearing>

Conference Line: 888-398-2342

Access Code: 8647385#