

# 2022 Muni Service Network Survey Report

## Overall Response Results

### Survey Completion Rate

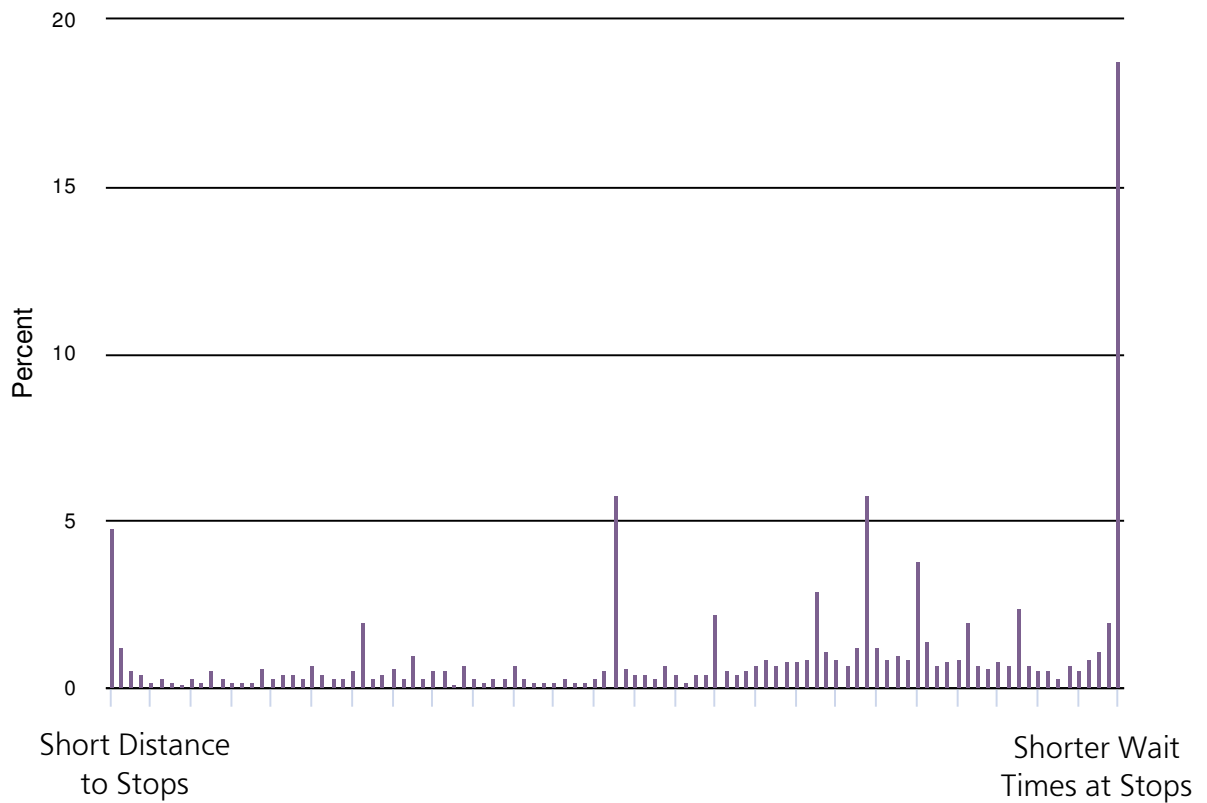


---

Totals: 5,227

# Survey Questions

1. What is more important to you?



## Q1 Statistics

---

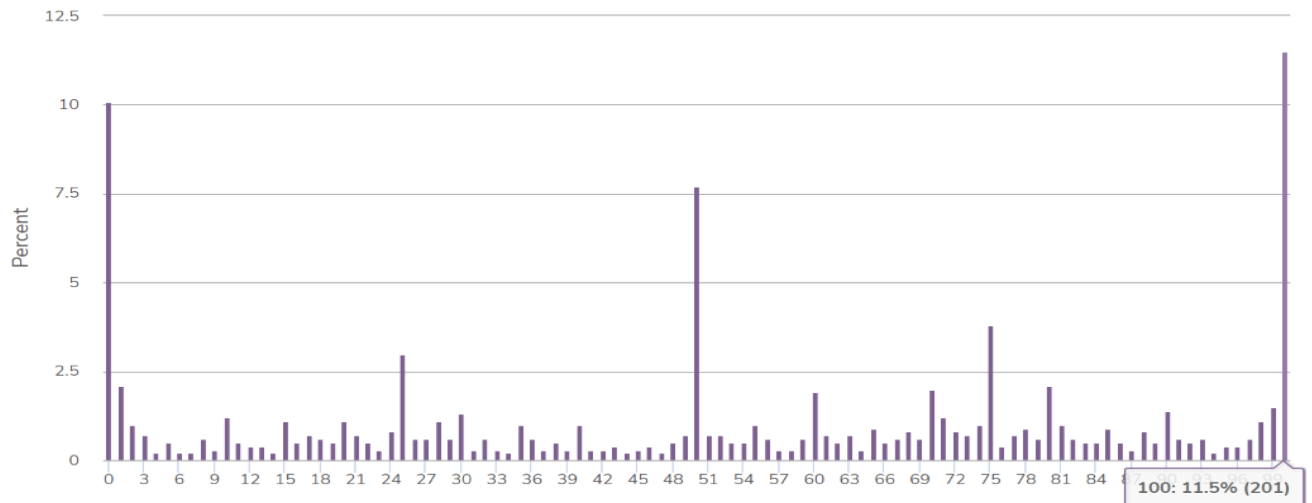
Average	65.8
StdDev	30.9
Total Responses	5163

## By Most Preferred Alternative

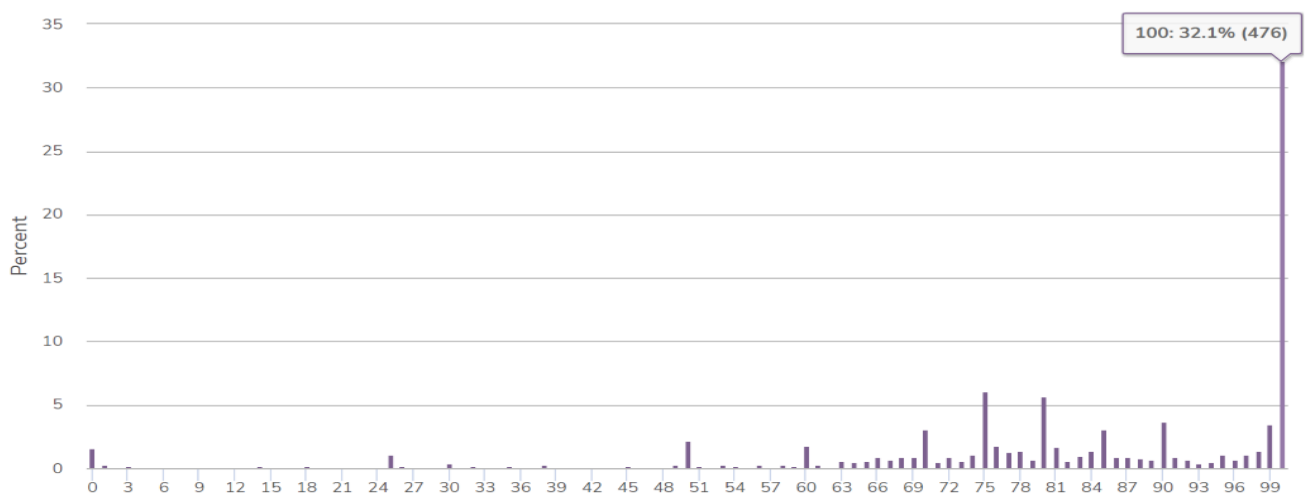
Segment	Average	StdDev	Total Responses
Familiar Alternative	52.3	33.7	1746
Frequent Alternative	81.1	22.7	1481
Hybrid Alternative	66.9	26.6	1223

0 = Shorter Distance to Stops  
100 = Shorter Wait/Travel Times

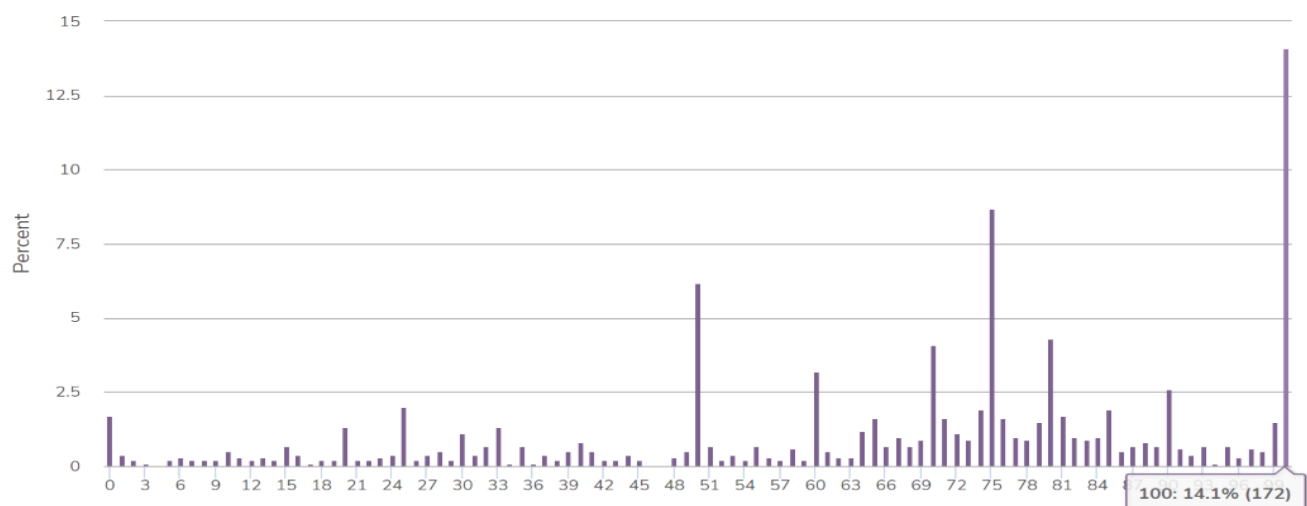
### Familiar



### Frequent



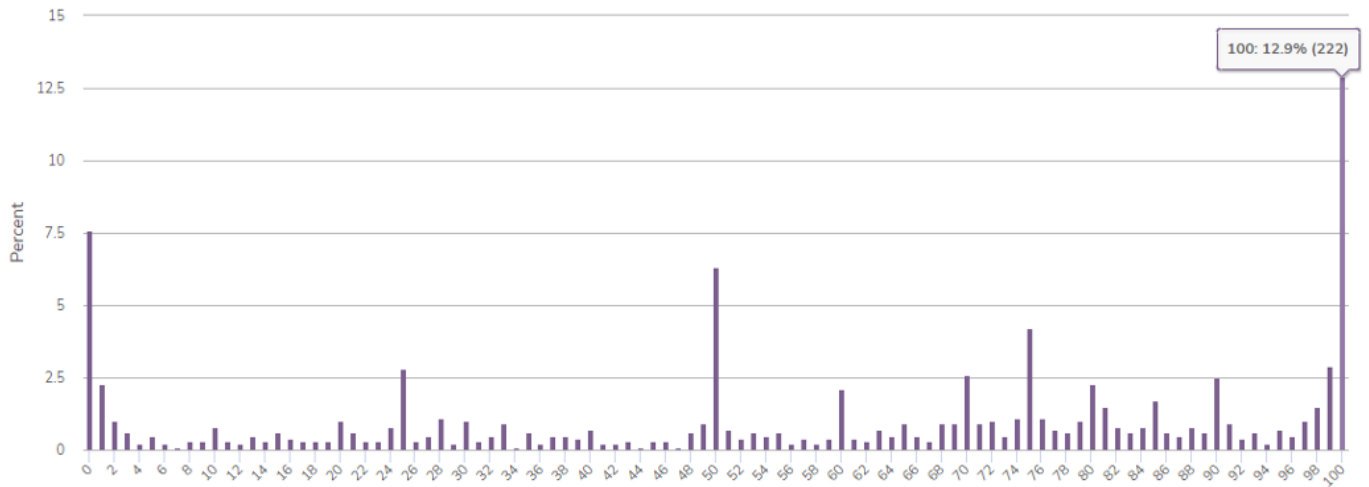
### Hybrid



## Age 55+

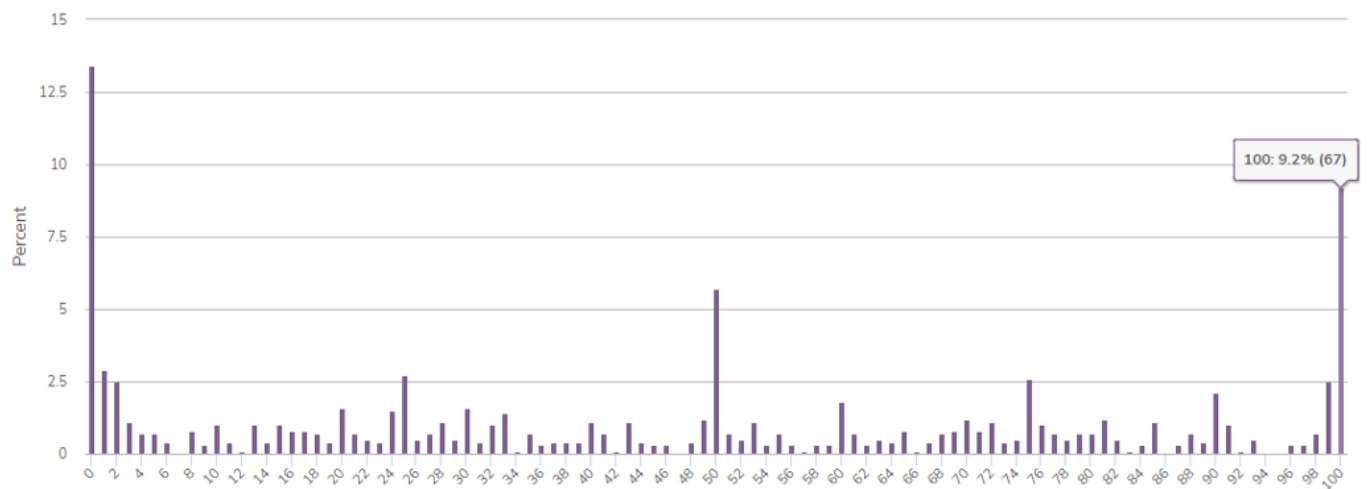
Average	StdDev	Total Responses
58.5	33.5	1717

0 = Shorter Distance to Stops  
100 = Shorter Wait/Travel Times



## Mobility Disability

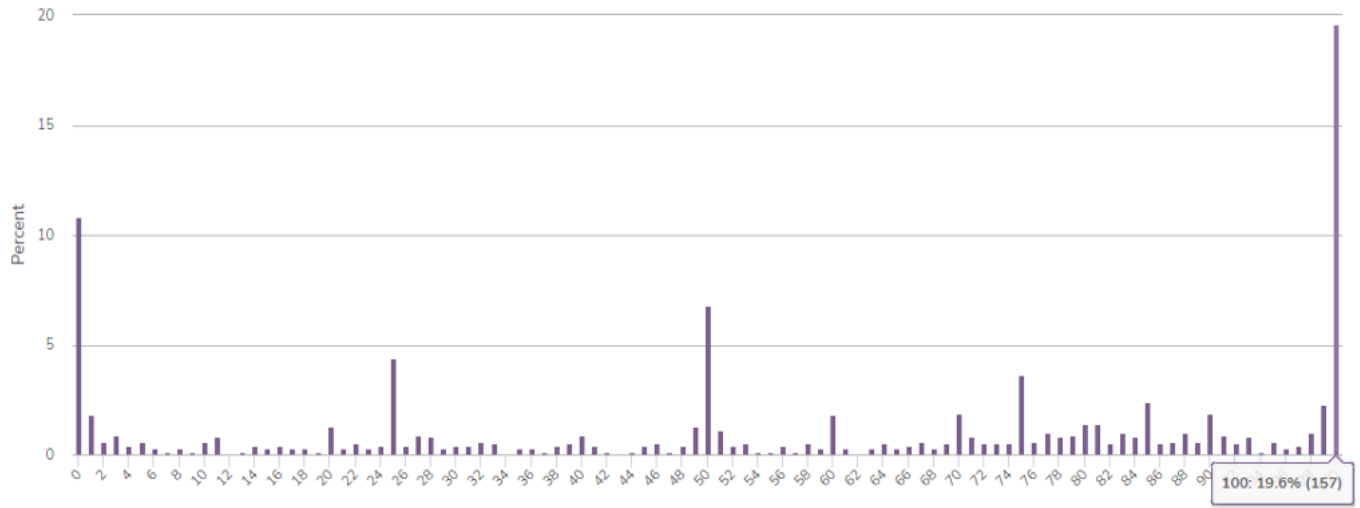
Average	StdDev	Total Responses
45.6	34.7	731



### Household Income <\$50K

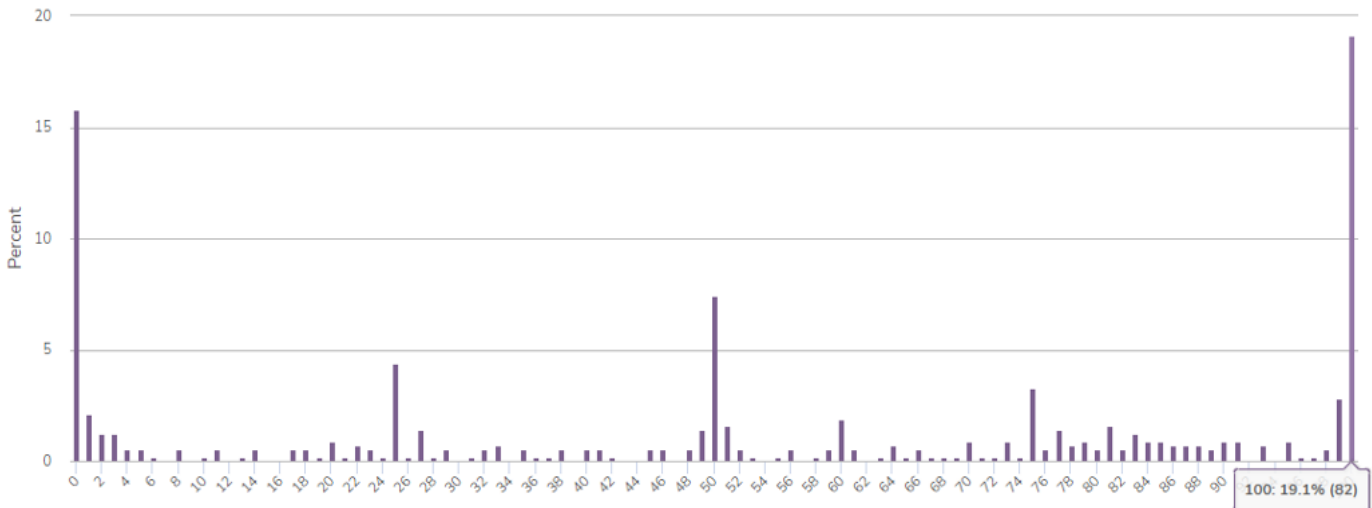
Average	StdDev	Total Responses
58.6	35.7	800

0 = Shorter Distance to Stops  
100 = Shorter Wait/Travel Times

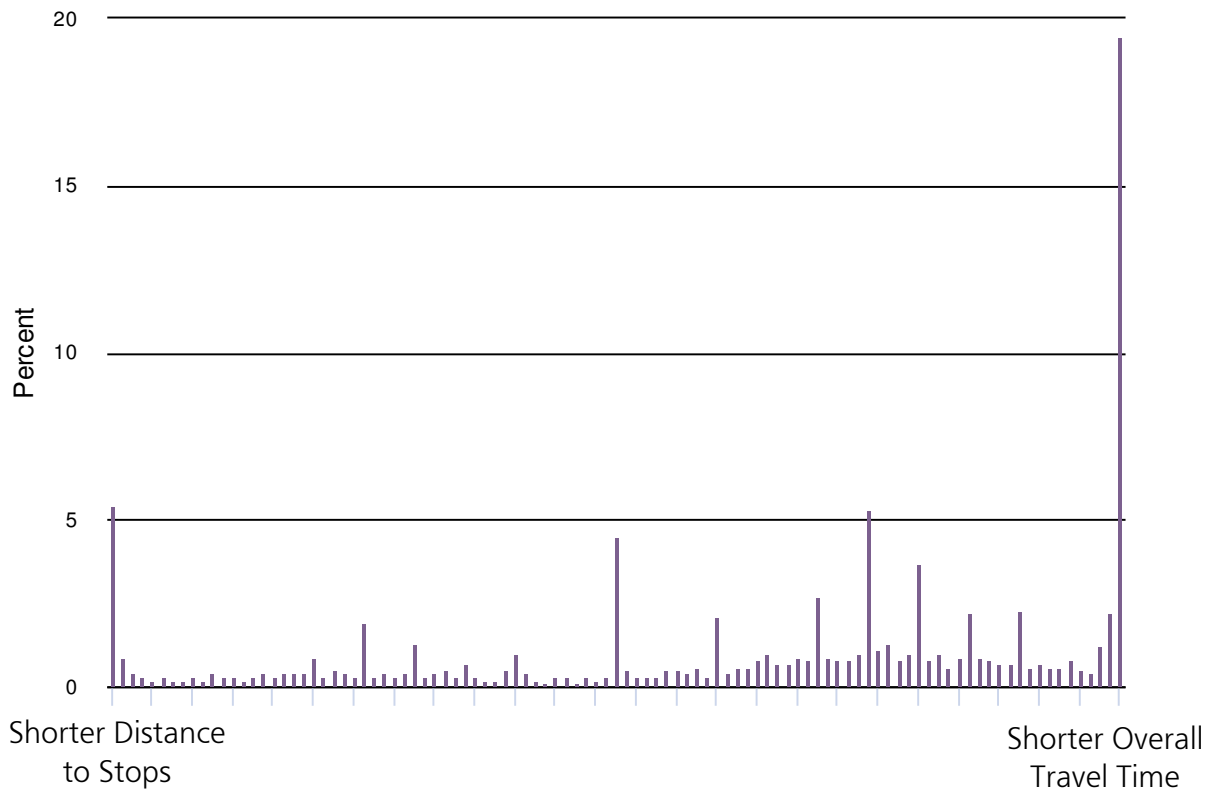


### Household Income <\$25K

Average	StdDev	Total Responses
54.0	37.5	430



2. Thinking about overall travel time, including walking/rolling to a transit stop, waiting and transit travel time, what is more important to you?



## Q2 Statistics

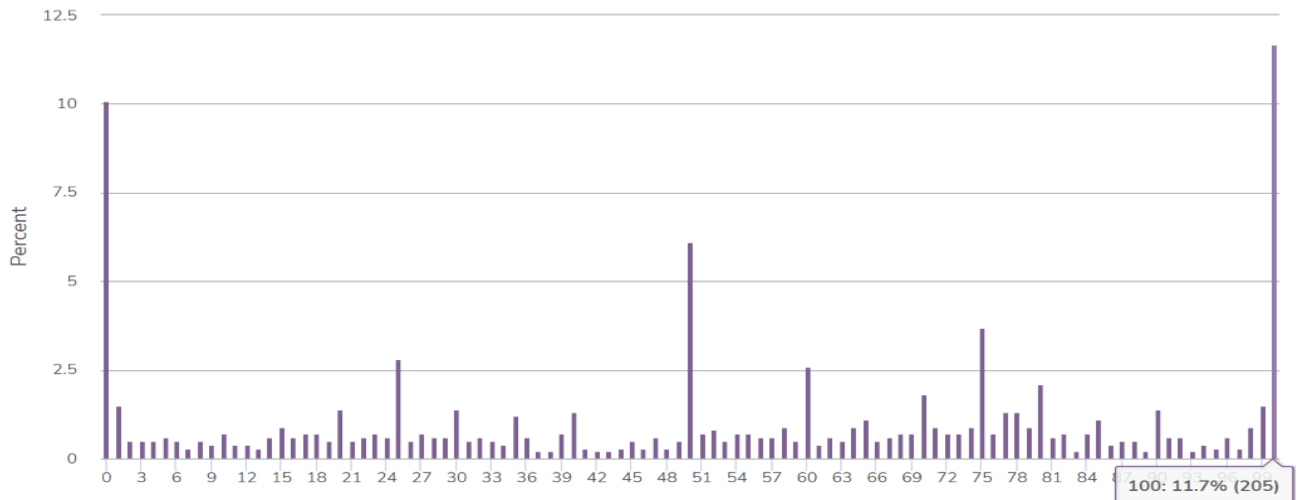
Average	65.7
StdDev	31.4
Total Responses	5157

## By Most Preferred Alternative

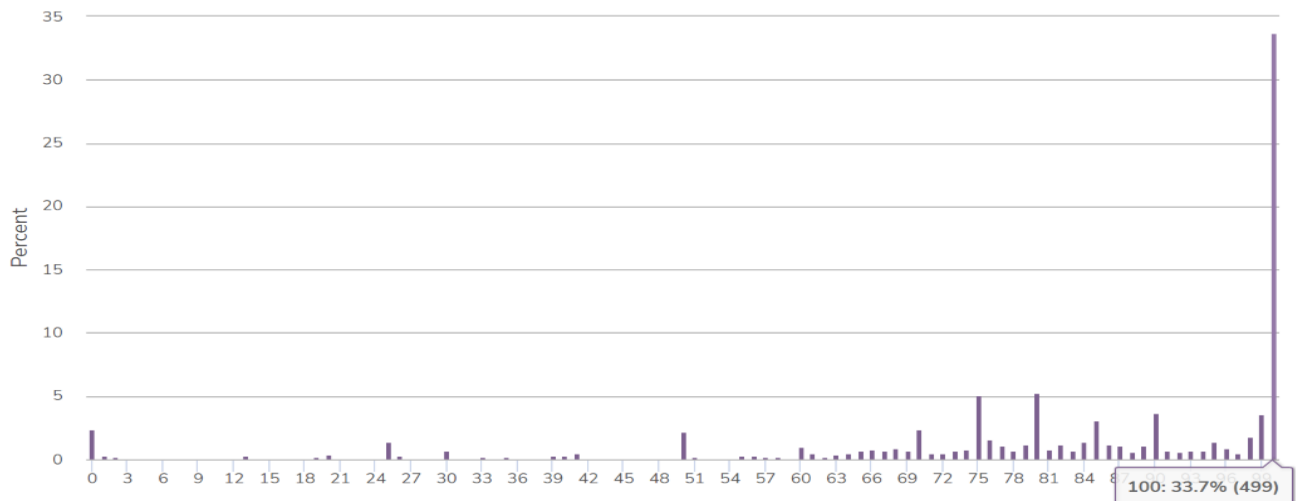
Segment	Average	StdDev	Total Responses
Familiar Alternative	52.7	33.4	1746
Frequent Alternative	80.4	24.9	1481
Hybrid Alternative	66.8	27.5	1223

0 = Shorter Distance to Stops  
100 = Shorter Wait/Travel Times

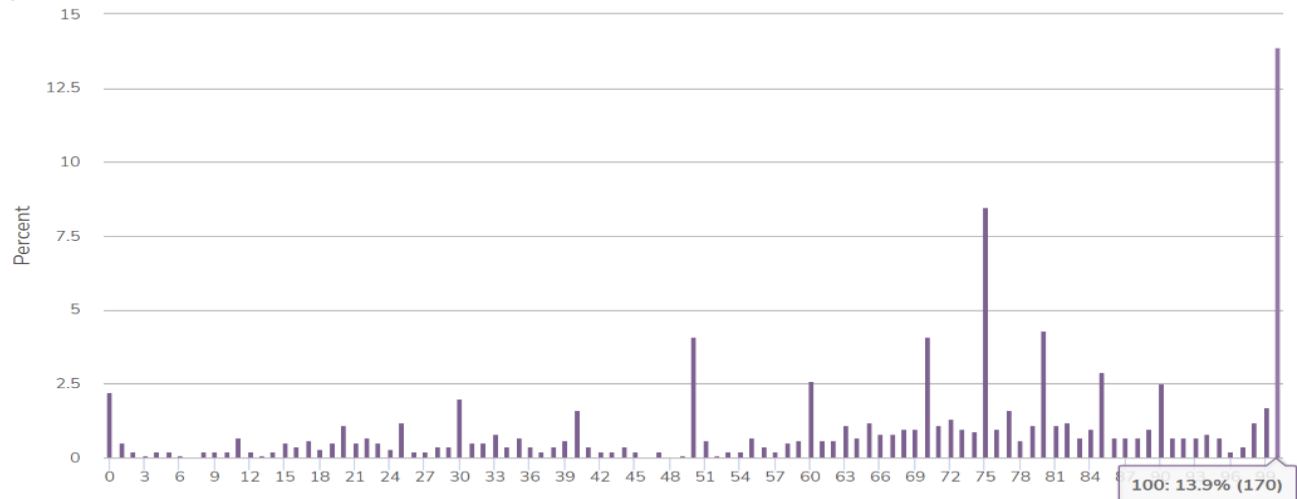
### Familiar



### Frequent



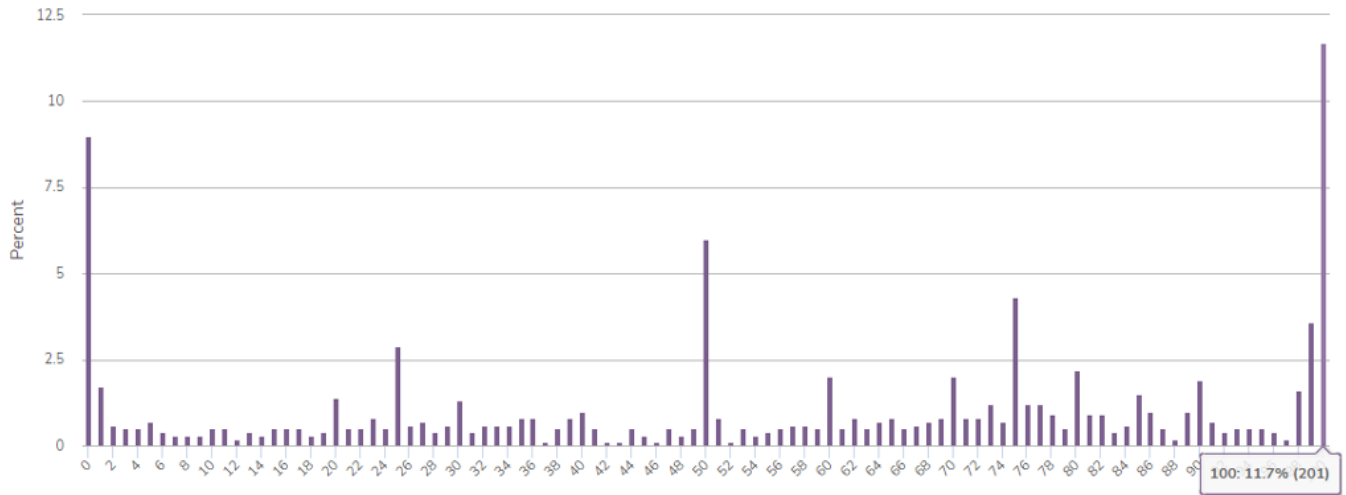
### Hybrid



## Age 55+

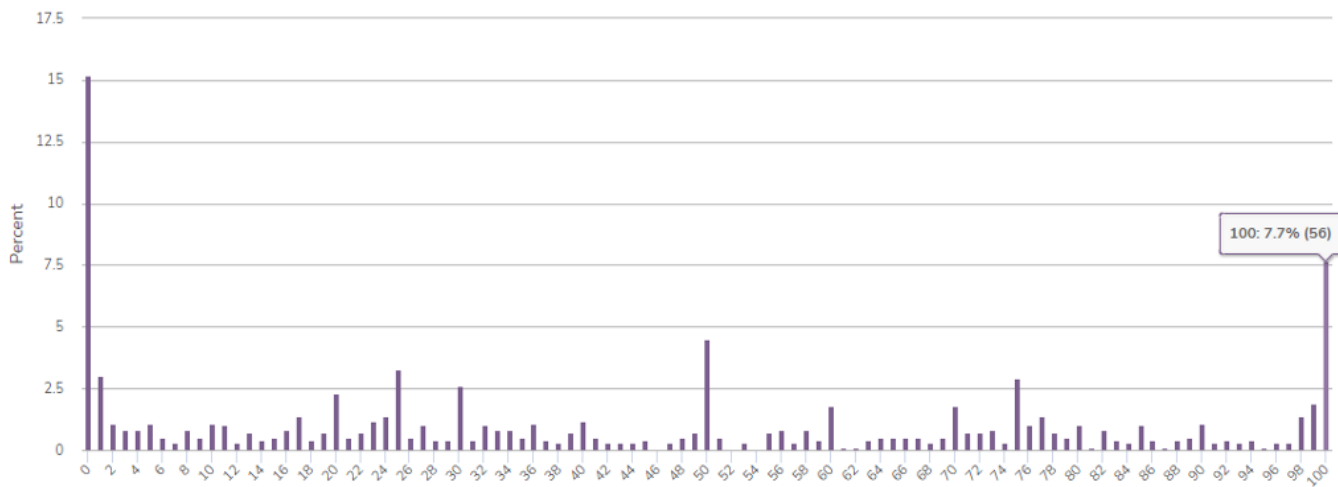
Average	StdDev	Total Responses
56.3	33.7	1717

0 = Shorter Distance to Stops  
100 = Shorter Wait/Travel Times



## Mobility Disability

Average	StdDev	Total Responses
42.9	34.4	731

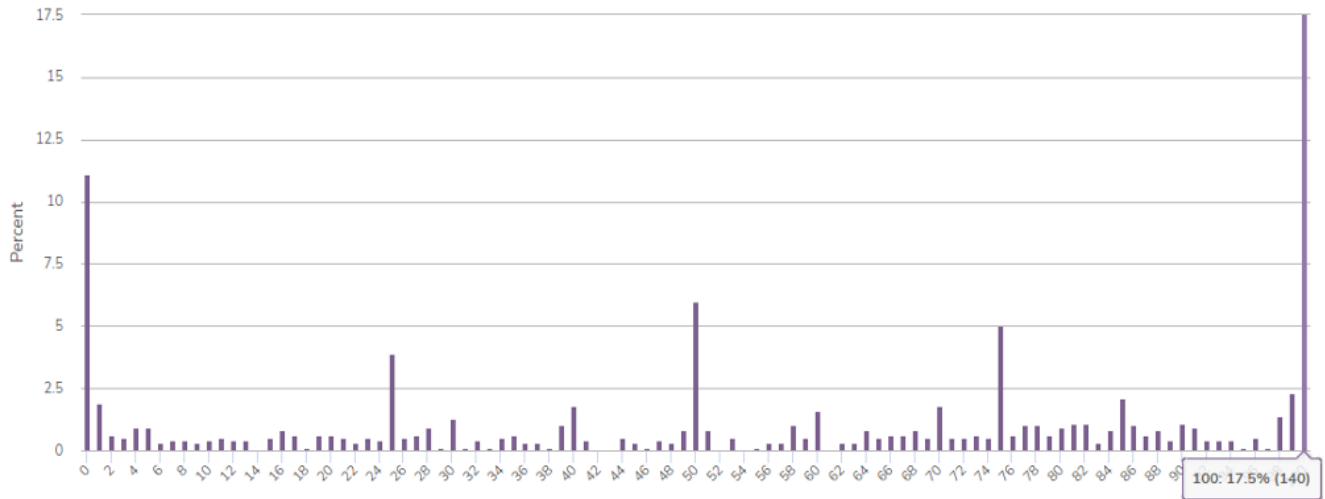




## Household Income <\$50K

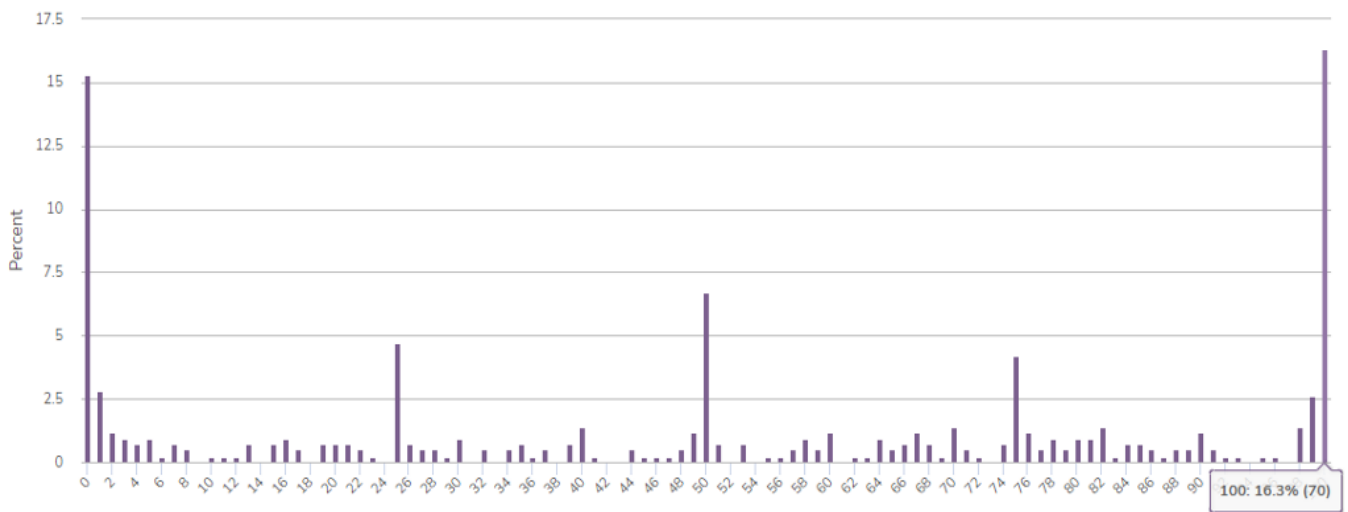
Average	StdDev	Total Responses
56.3	35.7	800

0 = Shorter Distance to Stops  
100 = Shorter Wait/Travel Times

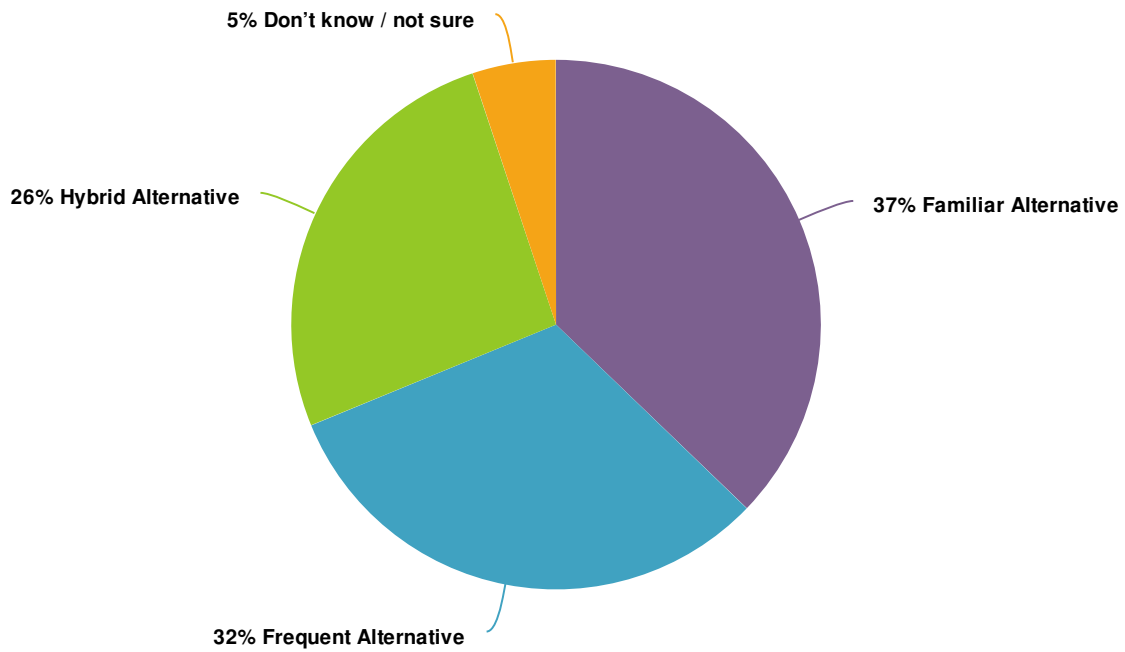


## Household Income <\$25K

Average	StdDev	Total Responses
50.9	37.0	430



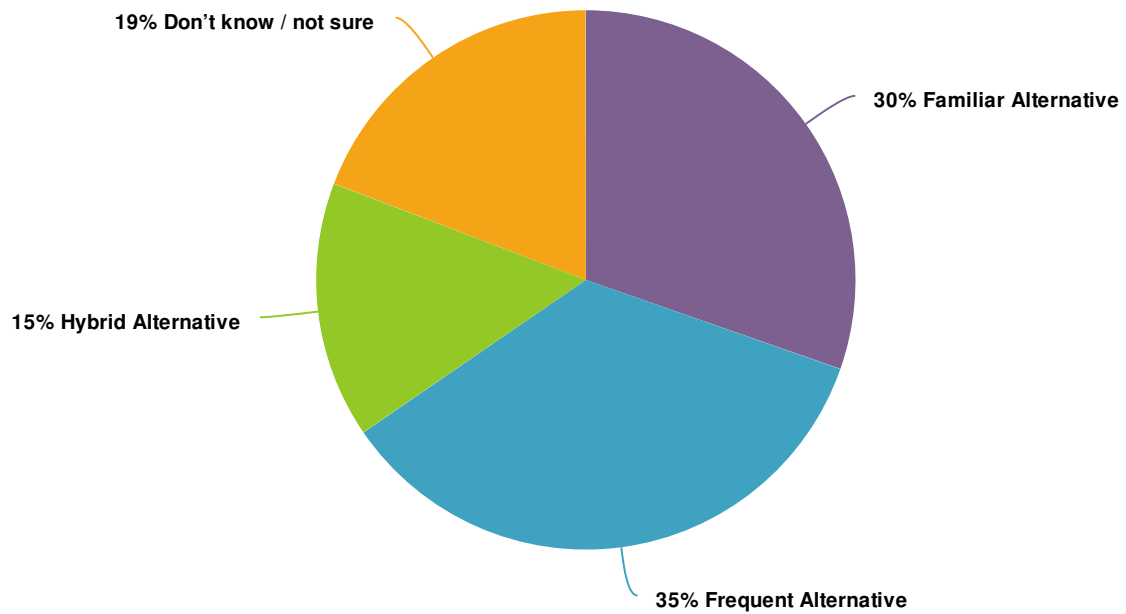
3. Thinking about the three alternatives, which of the three do you prefer the most?







Q3 Value	Percent	Responses
Familiar Alternative	37.2%	1,746
Frequent Alternative	31.6%	1,481
Hybrid Alternative	26.1%	1,223
Don't know / not sure	5.1%	240

Totals: 4,690

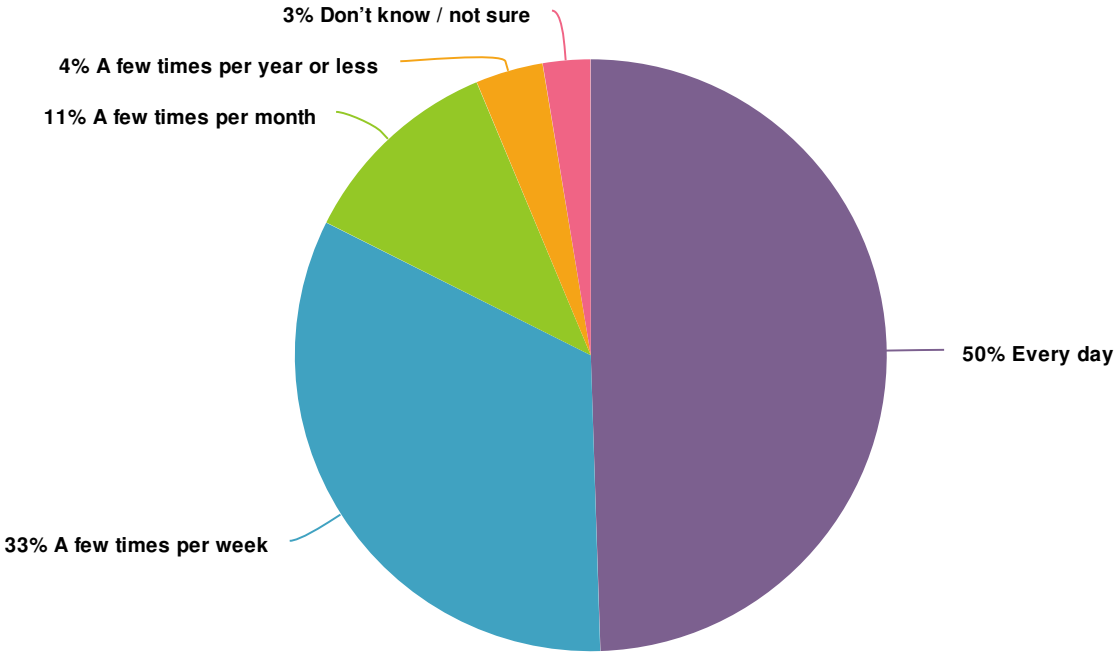
4. Thinking about the three alternatives, which of the three do you prefer the least?



Q4 Value		Percent	Responses
Familiar Alternative		30.4%	1,426
Frequent Alternative		35.1%	1,644
Hybrid Alternative		15.4%	721
Don't know / not sure		19.2%	898

Totals: 4,689

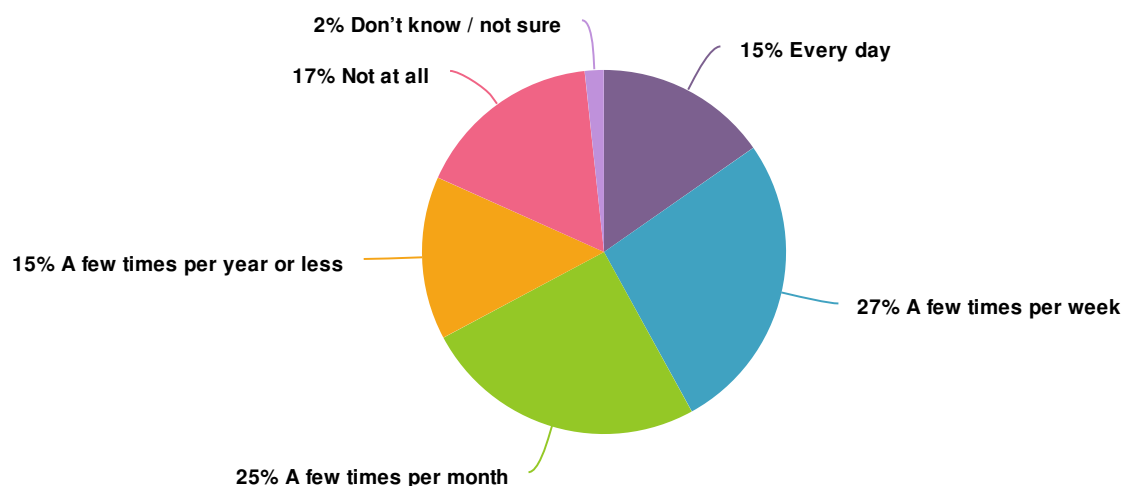
5. Before the COVID-19 shelter-in-place orders went into effect, how often did you ride Muni?



Q5 Value	Percent	Responses
Every day	49.5%	2,323
A few times per week	32.9%	1,543
A few times per month	11.3%	530
A few times per year or less	3.7%	174
Don't know / not sure	2.6%	120

Totals: 4,690

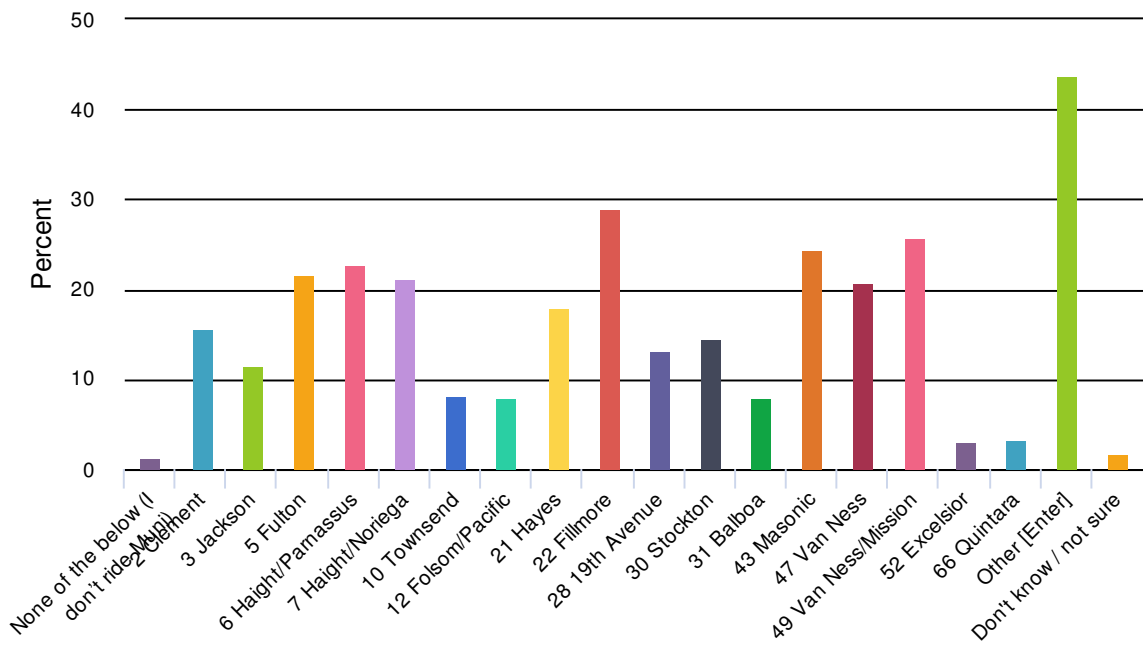
6. Since the COVID-19 shelter-in-place orders went into effect, how often do you ride Muni?



Q6 Value	Percent	Responses
Every day	15.3%	718
A few times per week	26.7%	1,251
A few times per month	25.2%	1,183
A few times per year or less	14.5%	679
Not at all	16.6%	779
Don't know / not sure	1.7%	80

Totals: 4,690

7. Which Muni routes do you use most often now and/or did you use most often pre-pandemic? Check all that apply.





### Q7 Statistics

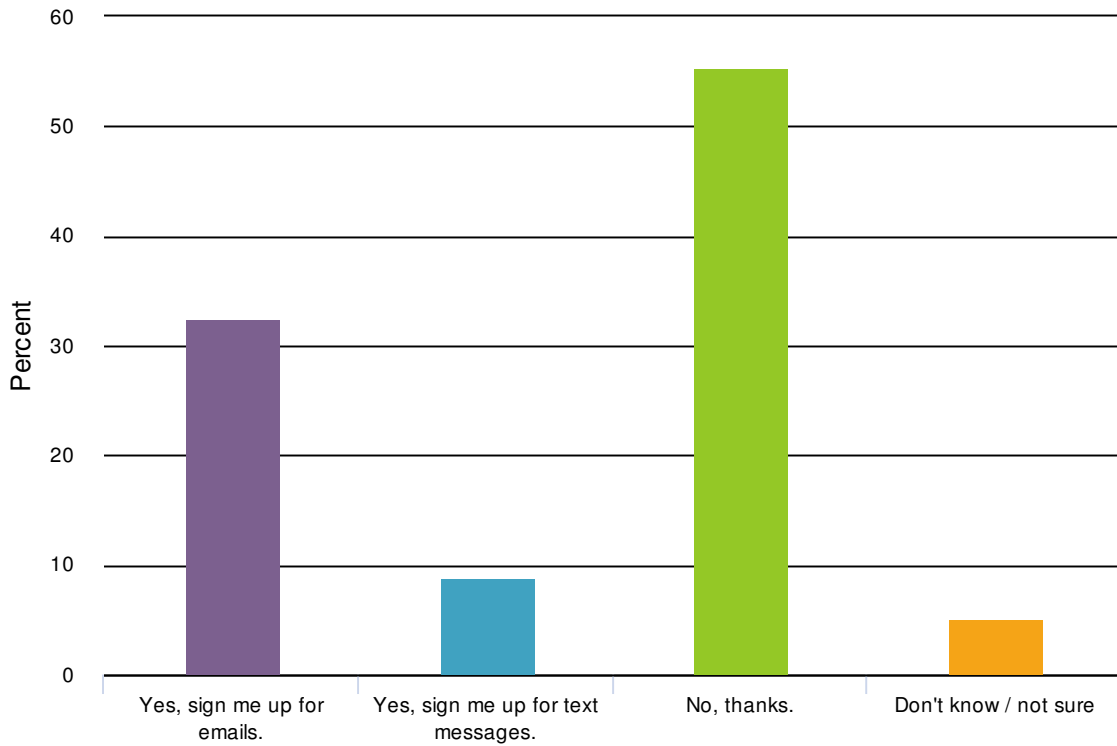
Average 17.7





StdDev 18.3

Total Responses 4691

Q7 Value		Percent	Responses
None of the below (I don't ride Muni)		1.3%	60
2 Clement		15.6%	731
3 Jackson		11.5%	541
5 Fulton		21.7%	1,019
6 Haight/Parnassus		22.8%	1,069
7 Haight/Noriega		21.3%	1,000
10 Townsend		8.2%	387
12 Folsom/Pacific		8.1%	382
21 Hayes		17.9%	840
22 Fillmore		29.1%	1,365
28 19th Avenue		13.2%	620
30 Stockton		14.5%	682
31 Balboa		8.0%	374
43 Masonic		24.5%	1,151
47 Van Ness		20.7%	969
49 Van Ness/Mission		25.8%	1,212
52 Excelsior		3.0%	139
66 Quintara		3.2%	151
Other [Enter]		43.8%	2,056
Don't know / not sure		1.7%	80

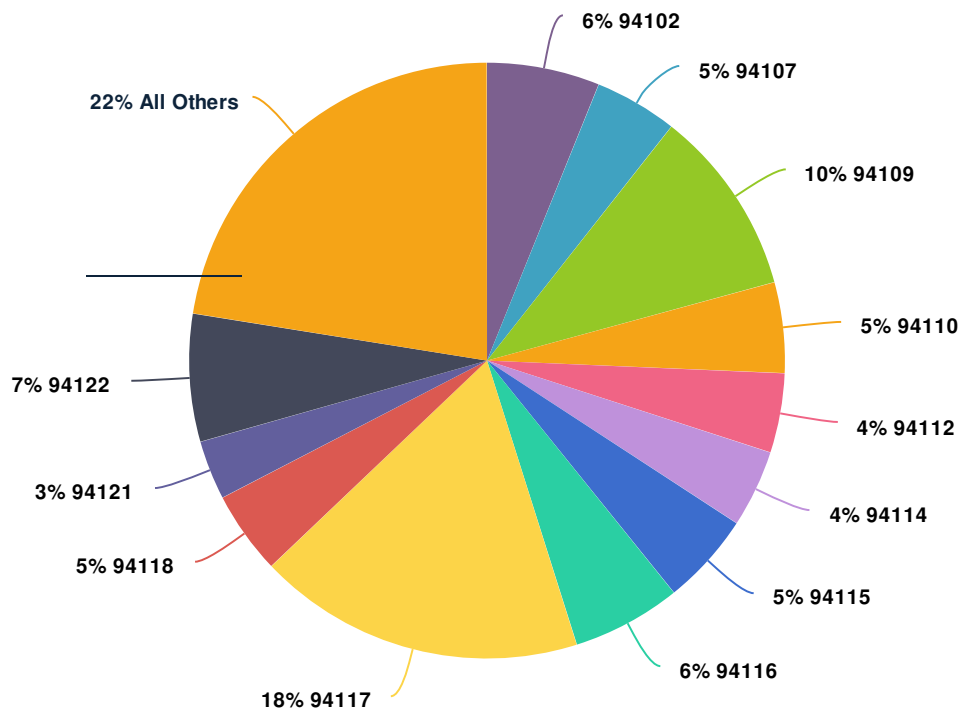
8. Would you like to receive emails or text message updates about the 2022 Muni Service Network?



Q8 Value		Percent	Responses
Yes, sign me up for emails.		32.5%	1,489
Yes, sign me up for text messages.		8.9%	409
No, thanks.		55.4%	2,539
Don't know / not sure		5.1%	235



## 9. What is your zip code?



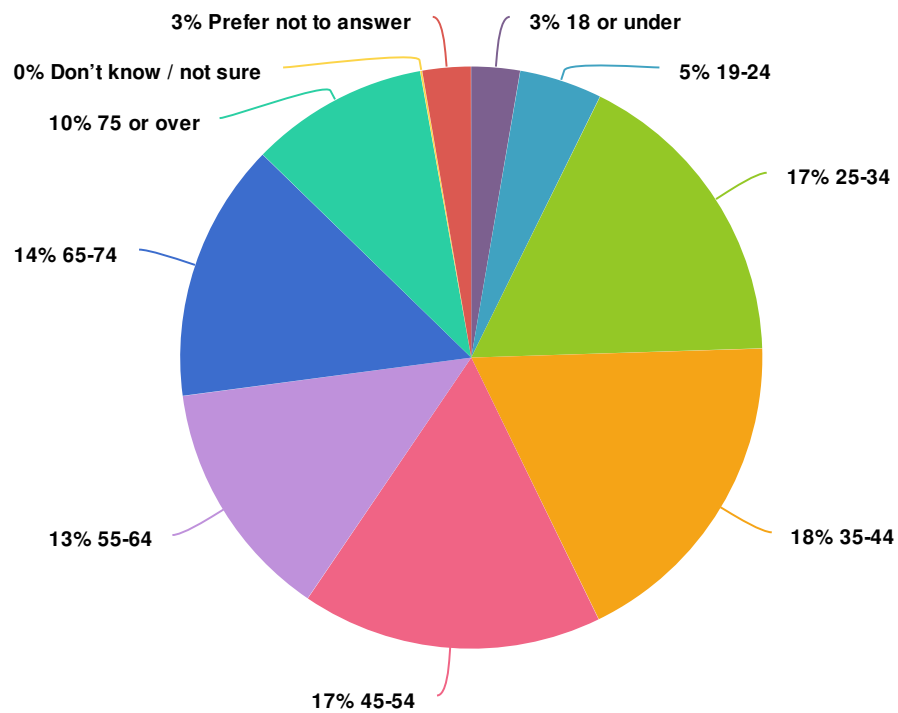
Q9 Value	Percent	Responses
94102	6.1%	284
94107	4.5%	213
94109	10.1%	473
94110	4.9%	231
94112	4.3%	203
94114	4.2%	199
94115	5.0%	235
94116	5.9%	279

Totals: 4,691

Q9 Value Continued		Percent	Responses
94117		17.7%	830
94118		4.5%	213
94121		3.2%	151
94122		6.9%	322
94103		2.8%	132
94104		0.2%	9
94105		1.4%	67
94108		1.2%	56
94111		0.3%	15
94123		2.0%	94
94124		0.9%	43
94127		2.0%	93
94129		0.3%	15
94130		0.1%	4
94131		2.5%	119
94132		1.5%	71
94133		1.7%	79
94134		1.8%	84
94151		0.0%	2
94158		0.4%	21
94177		0.0%	2
Other		2.5%	115
Don't know / not sure		0.8%	37

**Totals: 4,691**

## 10. What is your age?



Q10 Value	Percent	Responses
18 or under	2.7%	123
19-24	4.6%	209
25-34	17.2%	784
35-44	18.3%	831
45-54	16.7%	758
55-64	13.4%	610
65-74	14.4%	655
75 or over	9.9%	452
Don't know / not sure	0.1%	6
Prefer not to answer	2.7%	124

Totals: 4,552

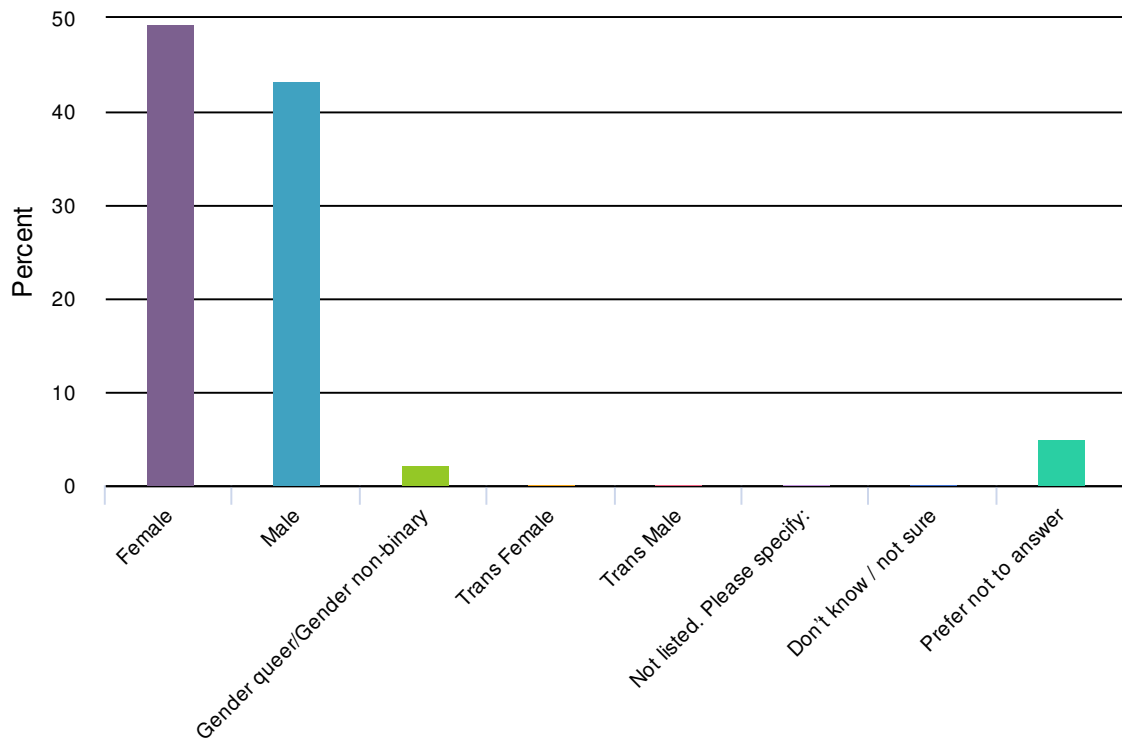
## Q10 Statistics

Average 43.7

StdDev 18.8

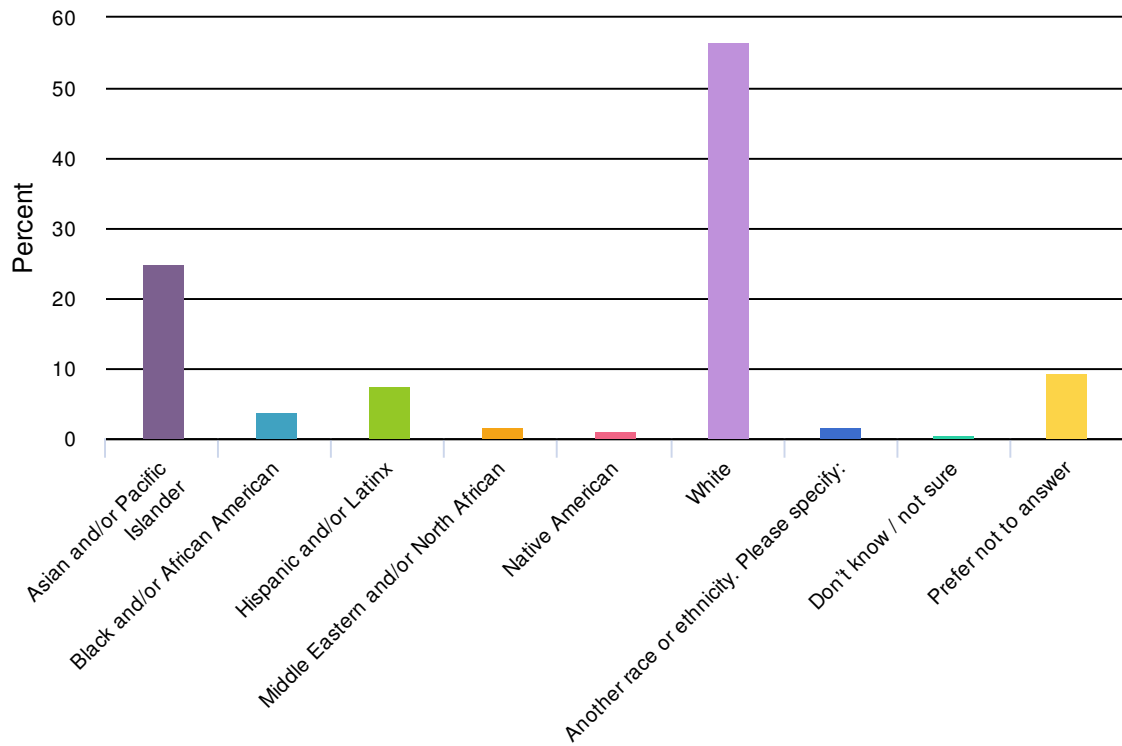
Total Responses 4552

### 11. How do you describe your gender identity? (Select all that apply)



Q11 Value	Percent	Responses
Female	49.3%	2,233
Male	43.3%	1,960
Gender queer/Gender non-binary	2.3%	103
Trans Female	0.2%	9
Trans Male	0.3%	13
Not listed. Please specify:	0.2%	10
Don't know / not sure	0.3%	12
Prefer not to answer	5.0%	228

12. With what race and/or ethnicity do you identify? (Select all that apply)

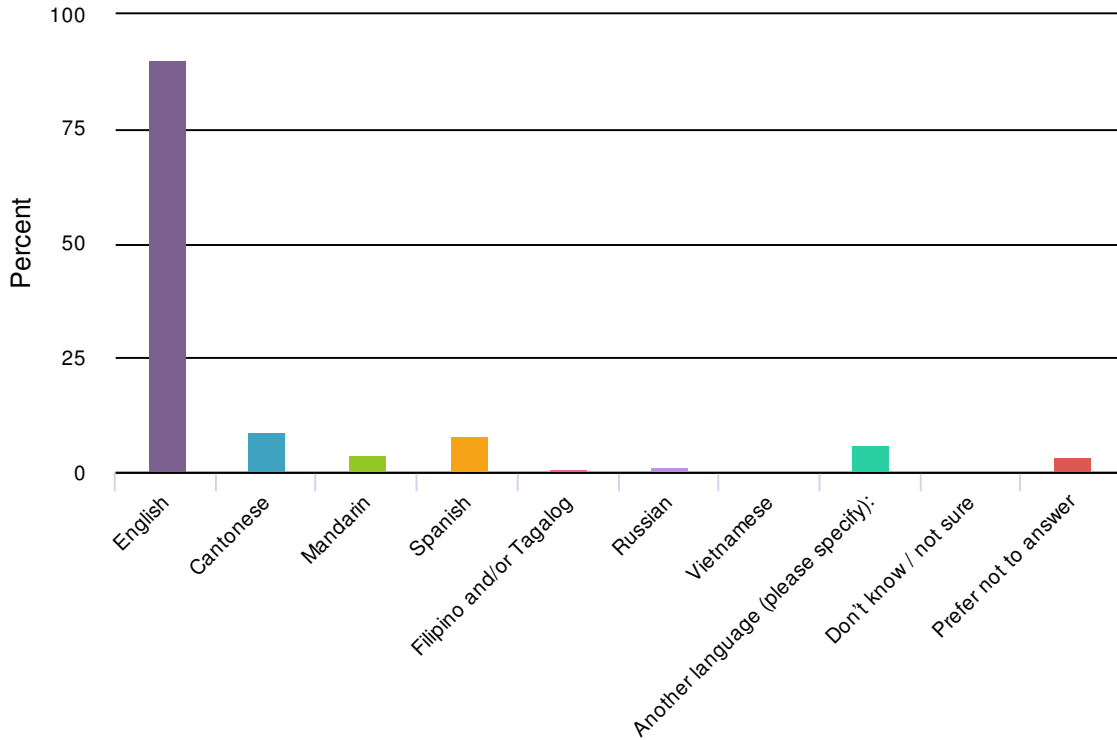


Q12 Value	Percent	Responses
Asian and/or Pacific Islander	25.0%	1,126
Black and/or African American	4.0%	182
Hispanic and/or Latinx	7.5%	337
Middle Eastern and/or North African	1.6%	74
Native American	1.2%	55
White	56.6%	2,548
Another race or ethnicity. Please specify:	1.6%	72
Don't know / not sure	0.5%	21
Prefer not to answer	9.5%	426

**Q12 Statistics**

Total Responses 4505

13. Please select all languages that you speak at home. (Select all that apply)



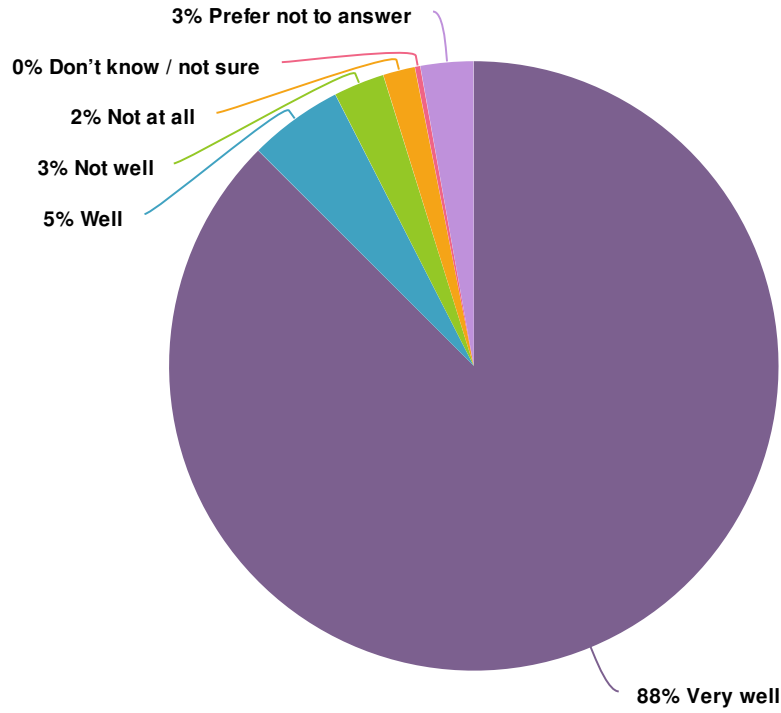
Q13 Value	Percent	Responses
English	90.3%	4,088
Cantonese	9.1%	414
Mandarin	3.9%	175
Spanish	7.9%	356
Filipino and/or Tagalog	0.9%	39
Russian	1.4%	64
Vietnamese	0.6%	25
Another language (please specify):	6.1%	277
Don't know / not sure	0.1%	4
Prefer not to answer	3.5%	158

**Q13 Statistics**

Total Responses

4527

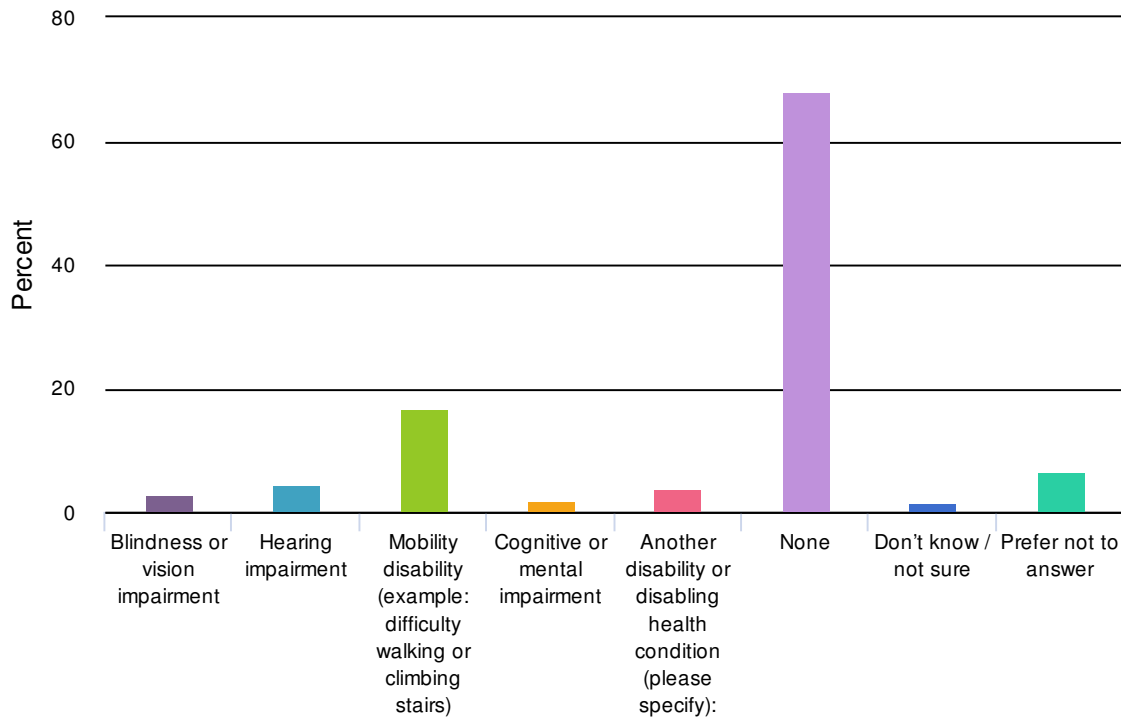
## 14. How well do you speak English?



Q14 Value	Percent	Responses
Very well	87.5%	3,956
Well	5.0%	228
Not well	2.7%	123
Not at all	1.7%	75
Don't know / not sure	0.3%	13
Prefer not to answer	2.8%	127

Totals: 4,522

15. Do any of the following disabilities currently affect your daily life? (Select all that apply)



Q15 Value	Percent	Responses
Blindness or vision impairment	2.8%	121
Hearing impairment	4.5%	196
Mobility disability (example: difficulty walking or climbing stairs)	16.6%	731
Cognitive or mental impairment	1.9%	85
Another disability or disabling health condition (please specify):	3.8%	168
None	68.1%	2,996
Don't know / not sure	1.5%	64
Prefer not to answer	6.5%	285

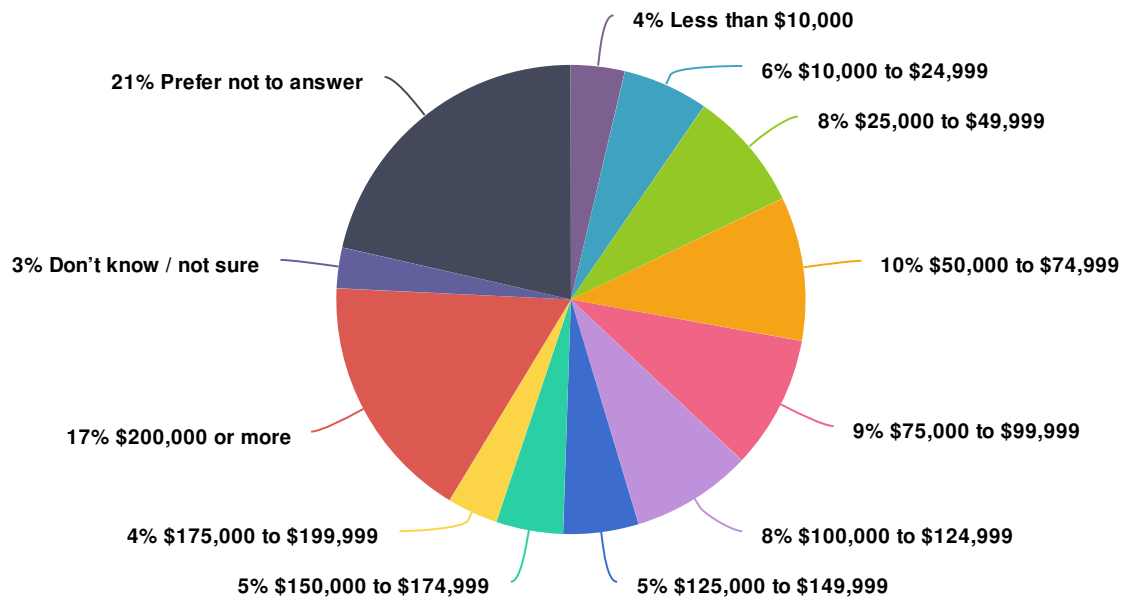
**Statistics**

Total Responses

4398

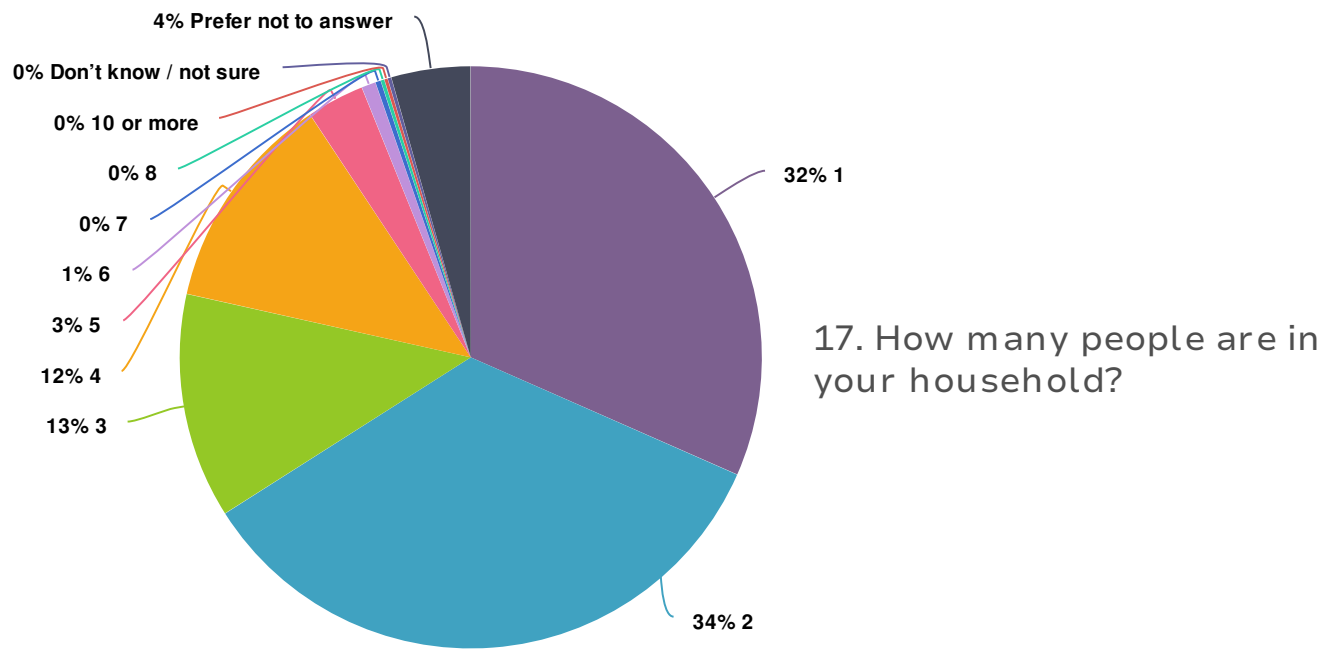


16. What is the total annual income (before taxes) of everyone in your household?



Q16 Value	Percent	Responses
Less than \$10,000	3.7%	165
\$10,000 to \$24,999	5.9%	265
\$25,000 to \$49,999	8.3%	370
\$50,000 to \$74,999	9.9%	442
\$75,000 to \$99,999	9.2%	412
\$100,000 to \$124,999	8.3%	371
\$125,000 to \$149,999	5.2%	232
\$150,000 to \$174,999	4.6%	207
\$175,000 to \$199,999	3.5%	155
\$200,000 or more	17.1%	763
Don't know / not sure	2.8%	125
Prefer not to answer	21.4%	956

Totals: 4,463



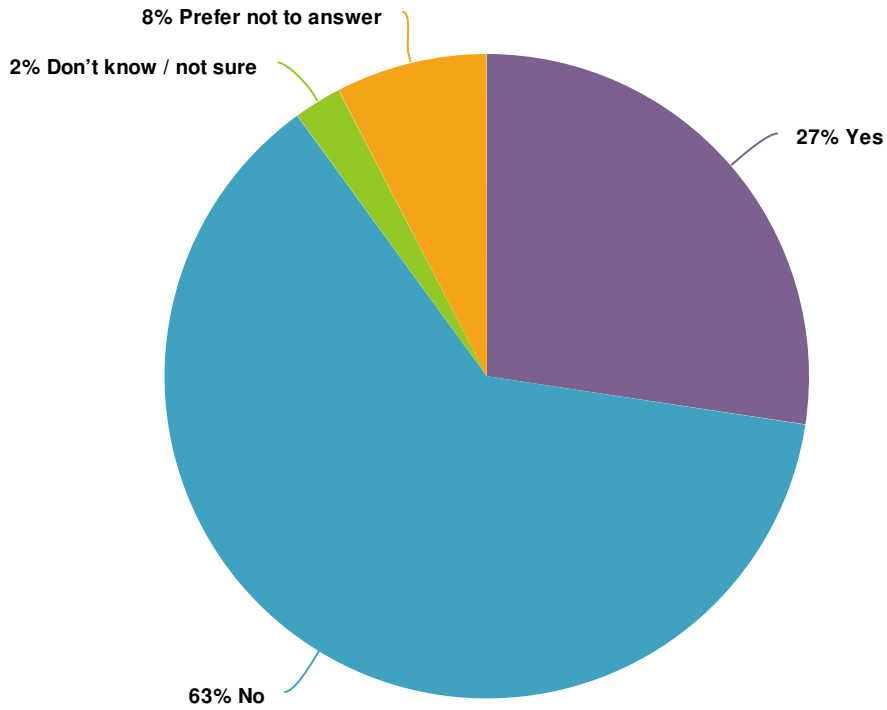
Q17 Value	Percent	Responses
1	31.6%	1,425
2	34.4%	1,550
3	12.5%	562
4	12.2%	551
5	3.2%	145
6	0.8%	37
7	0.3%	15
8	0.2%	7
9	0.0%	2
10 or more	0.2%	9
Don't know / not sure	0.2%	10
Prefer not to answer	4.4%	197

Totals: 4,510

### Q17 Statistics

Average	2.2
StdDev	1.2
Total Responses	4294

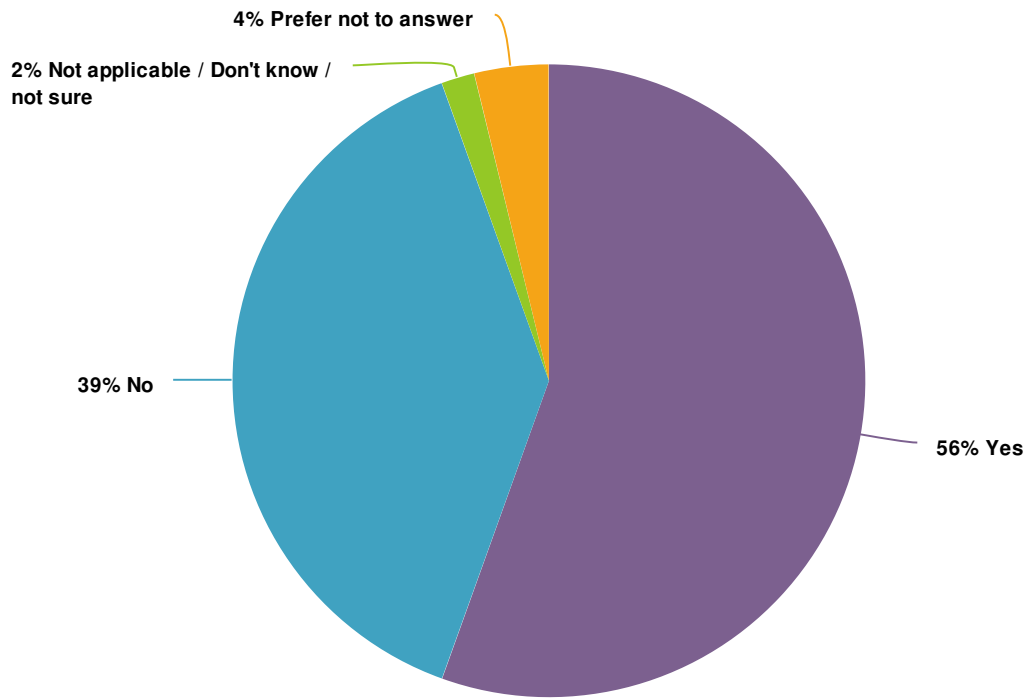
18. Have you experienced job loss or a reduction in income due to changes related to the pandemic?



Value	Percent	Responses
Yes	27.4%	1,233
No	62.6%	2,823
Don't know / not sure	2.4%	108
Prefer not to answer	7.6%	342

Totals: 4,506

19. Do you or someone in your household own a car that is used for transportation in San Francisco?



Value	Percent	Responses
Yes	55.5%	2,512
No	39.0%	1,767
Not applicable / Don't know / not sure	1.7%	77
Prefer not to answer	3.8%	173

Totals: 4,529