



SFMTA

September 4, 2020 Engineering Public Hearing

<https://meet.sfmta.com/meetings/KHYT22GZ>

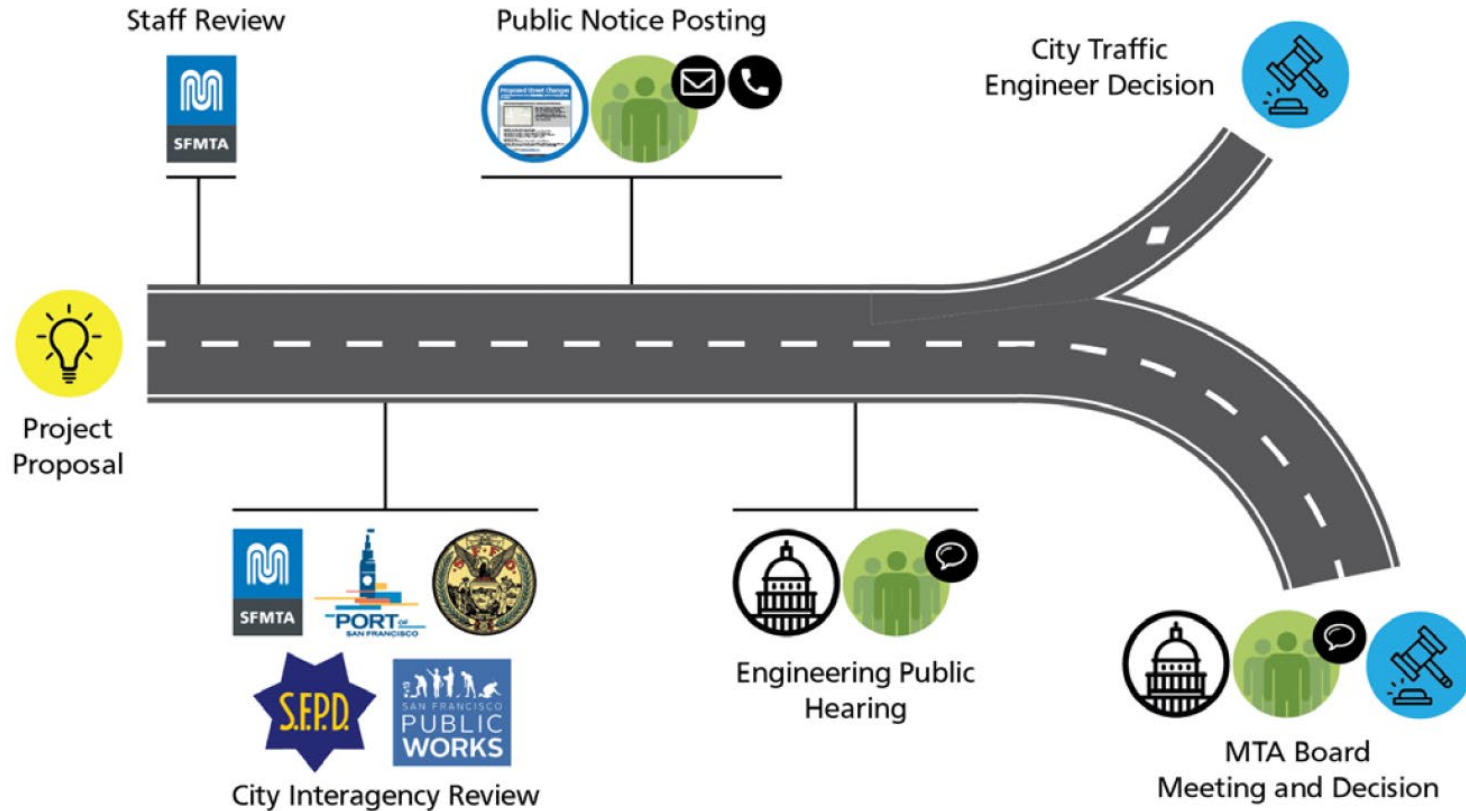
Conference Line: 888-251-2909

Participation Code: 4584731

[SFMTA.com/ENGSpeakerCard](https://sfmta.com/ENGSpeakerCard)

Proposed Street Changes

How does a proposed street change get approved?



<https://www.sfmta.com/committees/engineering-public-hearings>


Public Hearing Decision Posting

Results will be posted by
5 PM next Friday

<https://www.sfmta.com/calendar/engineering-public-hearing-meeting-september-4-2020>

Referenced Materials

Engineering Public Hearing Agenda, July 17, 2020

 [Engineering Public Hearing Agenda, July 17, 2020](#)

Engineering Public Hearing Results, July 17, 2020

 [Engineering Public Hearing Results, July 17, 2020](#)



1. ESTABLISH - STOP SIGNS

Burrows Street, eastbound and westbound, at Gambier Street, and Gambier Street, southbound, at Burrows Street, making this T-intersection an all-way STOP ♦
(Supervisor District 9) Jeffrey Tom, jeffrey.tom@sfmta.com



Conference Line: 1-888-251-2909 (use participation code: 4584731)

To comment on an item, press "1" and then "0" when prompted.

2. ESTABLISH - STOP SIGNS

46th Avenue, northbound and southbound, at Moraga Street, making this intersection an all-way STOP ♦

(Supervisor District 4) Jeffrey Tom, jeffrey.tom@sfmta.com



Conference Line: 1-888-251-2909 (use participation code: 4584731)

To comment on an item, press "1" and then "0" when prompted.

3(a). RESCIND - METERED MOTORCYCLE PARKING

Channel Street, south side, from 20 feet to 80 feet west of 7th Street ♦

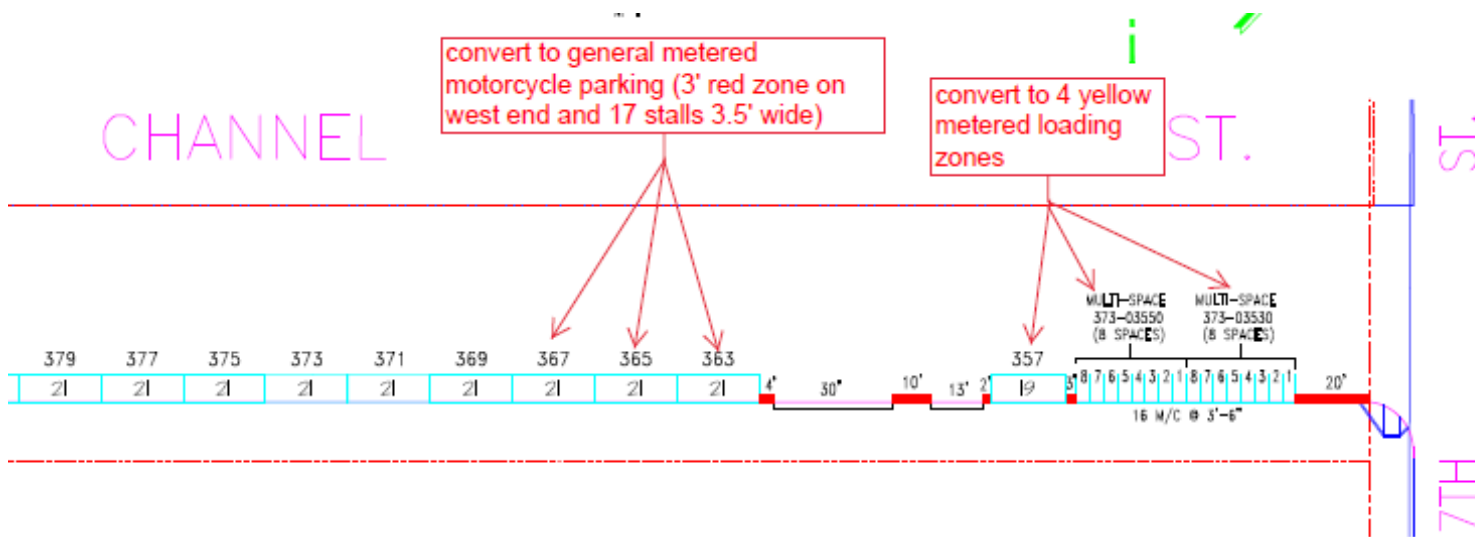
ESTABLISH - YELLOW METERED LOADING ZONE

Channel Street, south side, from 20 feet to 100 feet west of 7th Street (converts 16 motorcycle stalls and 1 general metered space to 4 yellow metered spaces) ♦

3(b). ESTABLISH - METERED MOTORCYCLE PARKING

Channel Street, south side, from 157 feet to 220 feet west of 7th Street (converts 3 general metered spaces to 17 metered motorcycle parking stalls) ♦

(Supervisor District 10) Alvin Lam, alvin.lam@sfmta.com



Conference Line: 1-888-251-2909 (use participation code: 4584731)

To comment on an item, press "1" and then "0" when prompted.

4(a). ESTABLISH – TRAFFIC SIGNAL

Oakdale Avenue and Loomis Street

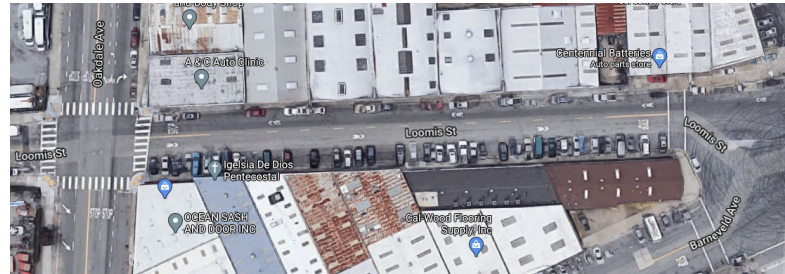
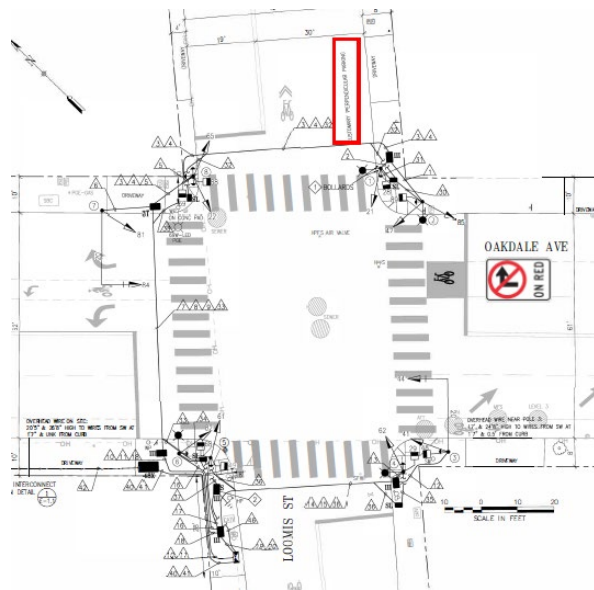
4(b). ESTABLISH – NO TURN ON RED

Oakdale Avenue, westbound, at Loomis Street ♦

4(c). ESTABLISH – PERPENDICULAR PARKING

Loomis Street, east side, from 10 feet north of Oakdale Avenue to 10 feet south of Barneveld Avenue

(Supervisor District 10) Corbin Skerrit, corbin.skerrit@sfmta.com



Conference Line: 1-888-251-2909 (use participation code: 4584731)

To comment on an item, press "1" and then "0" when prompted.

5(a). ESTABLISH – TRAFFIC SIGNAL

Kezar Drive and Lincoln Way

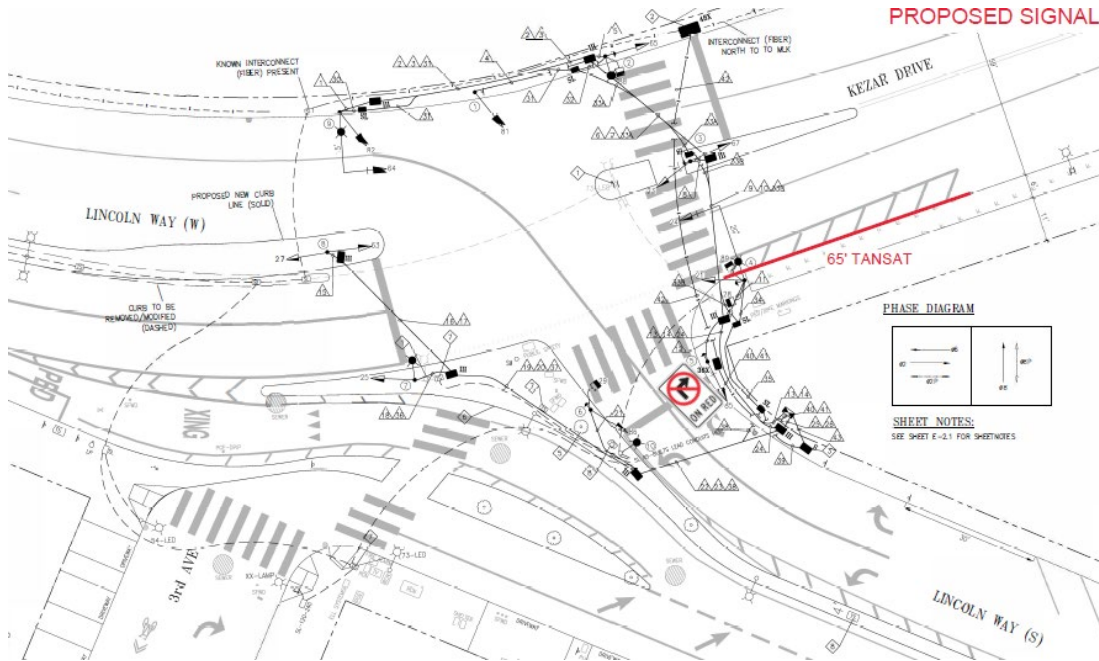
5(b). ESTABLISH – NO TURN ON RED

Lincoln Way, northbound, at Kezar Drive ♦

5(c). ESTABLISH – TOW-AWAY, NO STOPPING ANYTIME

Kezar Drive, south side, from Lincoln Way to 65 feet easterly

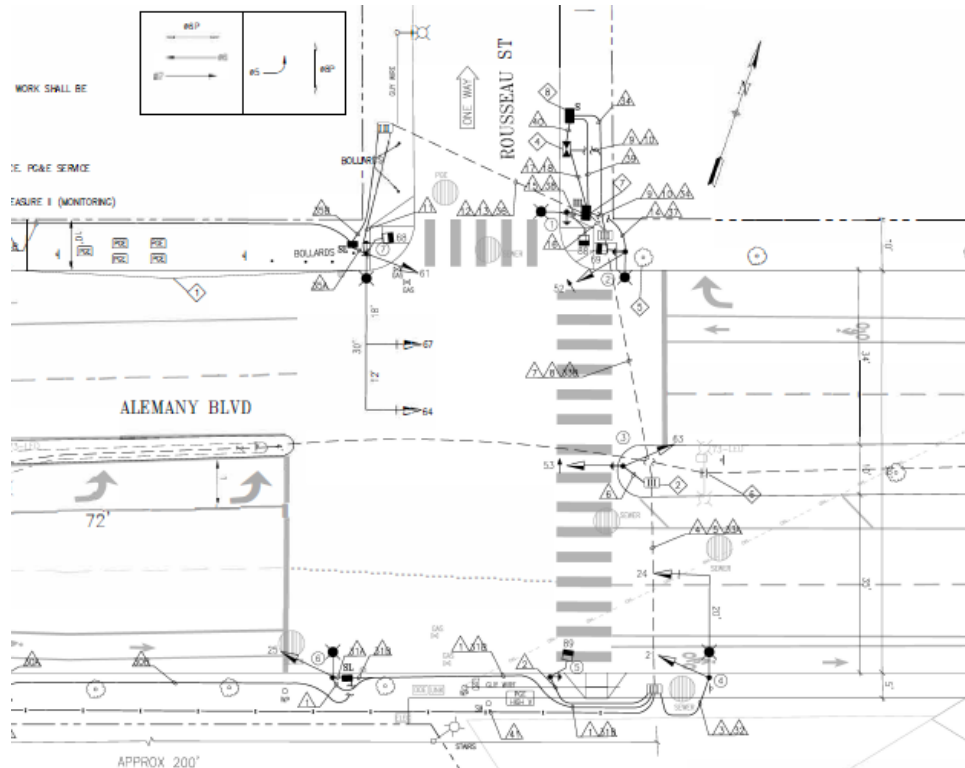
(Supervisor District 5) Corbin Skerrit, corbin.skerrit@sfmta.com



Conference Line: 1-888-251-2909 (use participation code: 4584731)

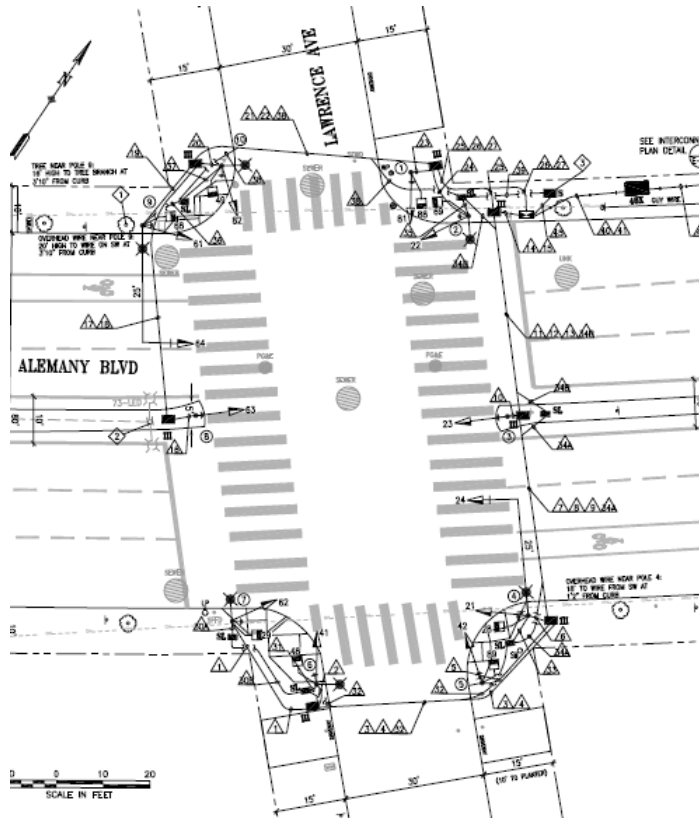
To comment on an item, press "1" and then "0" when prompted.

6. ESTABLISH – TRAFFIC SIGNAL Alemany Boulevard and Rousseau Street (Supervisor Districts 8 and 11) Corbin Skerrit, corbin.skerrit@sfmta.com



Conference Line: 1-888-251-2909 (use participation code: 4584731)
To comment on an item, press "1" and then "0" when prompted.

7. ESTABLISH – TRAFFIC SIGNAL Alemany Boulevard and Lawrence Street (Supervisor District 11) Corbin Skerrit, corbin.skerrit@sfmta.com



Conference Line: 1-888-251-2909 (use participation code: 4584731)

To comment on an item, press "1" and then "0" when prompted.

8(a). ESTABLISH – RECTANGULAR RAPID FLASHING BEACON (RRFB)

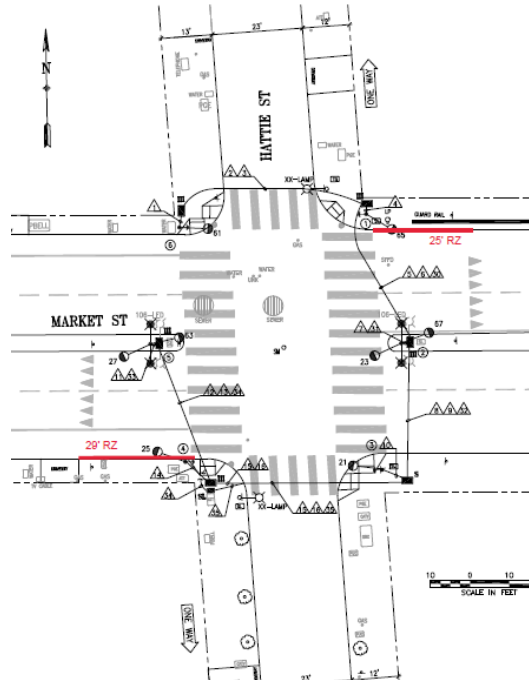
Market Street at Hattie Street

8(b). ESTABLISH – RED ZONE

Market Street, north side, from Hattie Street to 25 feet easterly

Market Street, south side, from Hattie Street to 29 feet westerly

(Supervisor District 8) Corbin Skerrit, corbin.skerrit@sfmta.com



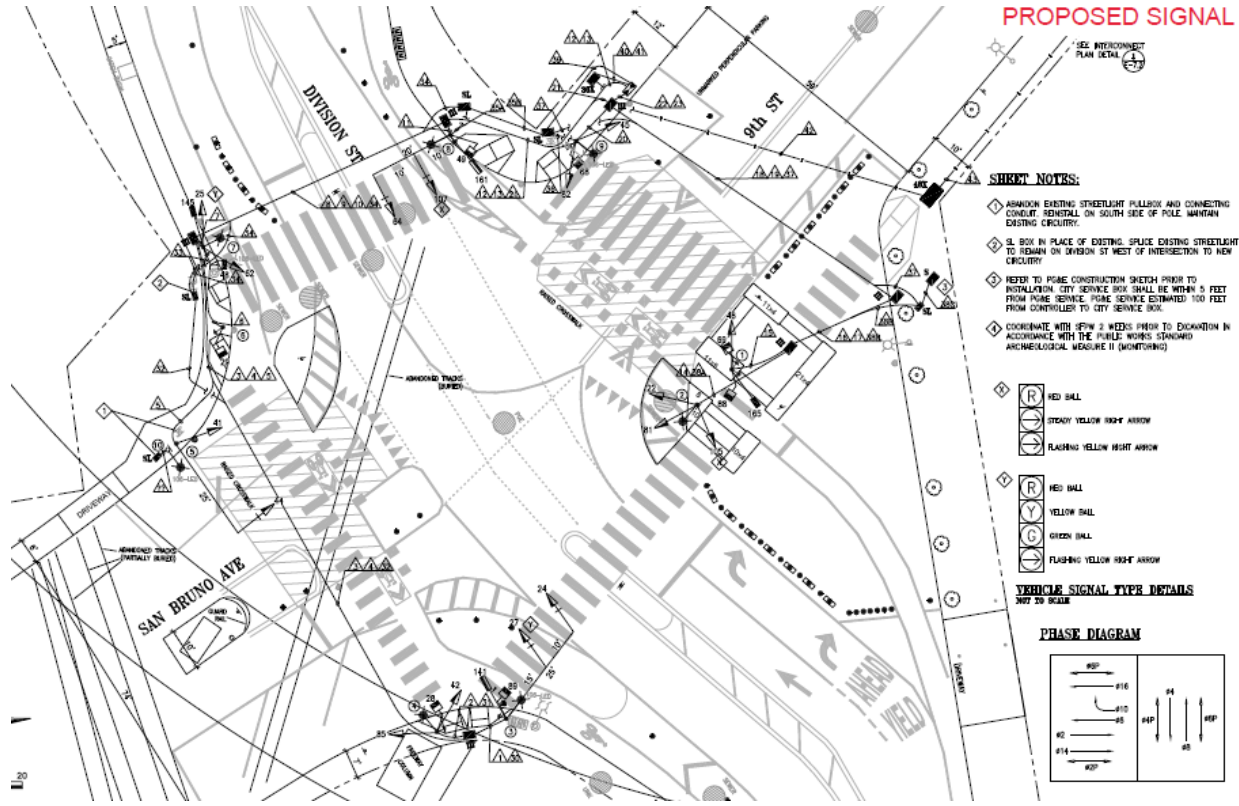
Conference Line: 1-888-251-2909 (use participation code: 4584731)

To comment on an item, press "1" and then "0" when prompted.

9. ESTABLISH – TRAFFIC SIGNAL

9th Street, Division Street, and San Bruno Avenue

(Supervisor Districts 6 and 10) Corbin Skerrit, corbin.skerrit@sfmta.com



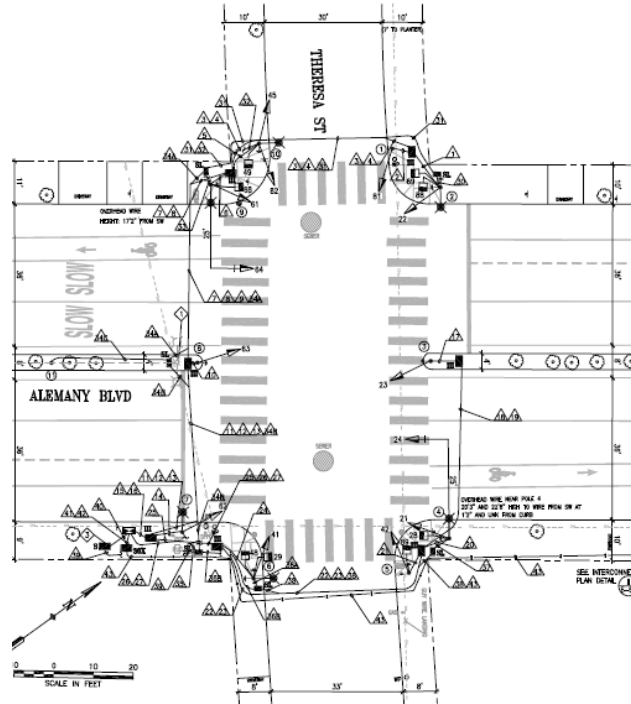
Conference Line: 1-888-251-2909 (use participation code: 4584731)
To comment on an item, press "1" and then "0" when prompted.

10(a). ESTABLISH – TRAFFIC SIGNAL

Alemany Boulevard and Theresa Street

10(b). RESCIND – RIGHT TURN ONLY

**Theresa Street, eastbound and westbound, at Alemany Boulevard ♦
(Supervisor District 11) Corbin Skerrit, corbin.skerrit@sfmta.com**



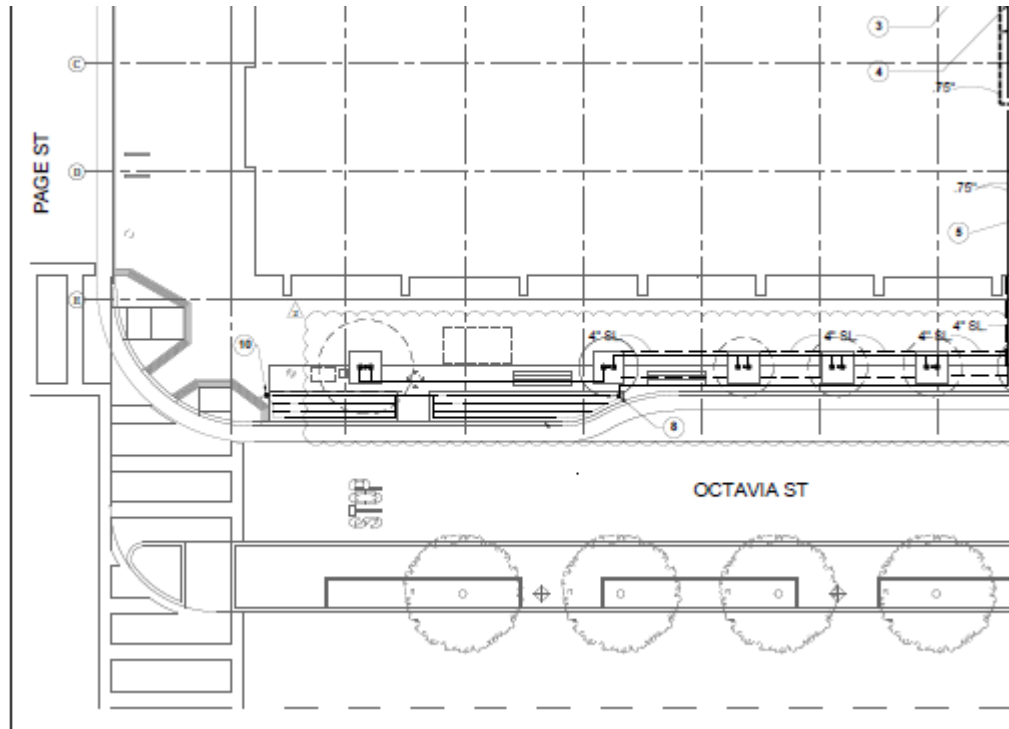
Conference Line: 1-888-251-2909 (use participation code: 4584731)

To comment on an item, press "1" and then "0" when prompted.

11. ESTABLISH – RED ZONE

ESTABLISH – SIDEWALK EXTENSION (4 FEET)

Octavia Street, east side, from Page Street to 57 feet southerly
(Supervisor District 5) Norman Wong, norman.wong@sfmta.com



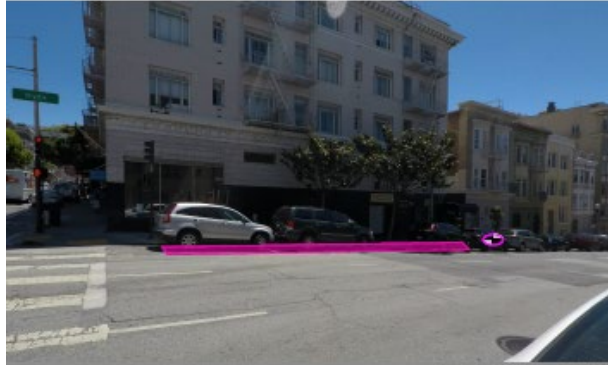
Conference Line: 1-888-251-2909 (use participation code: 4584731)

To comment on an item, press "1" and then "0" when prompted.

13. ESTABLISH – NO STOPPING EXCEPT BICYCLES ESTABLISH – BIKE SHARE STATION

Hyde Street, east side, from Post Street to 82 feet southerly (72-foot station with red zones on either side) (Supervisor District 6) ♦

Project Contact: Pallavi Panyam, Pallavi.Panyam@sfmta.com



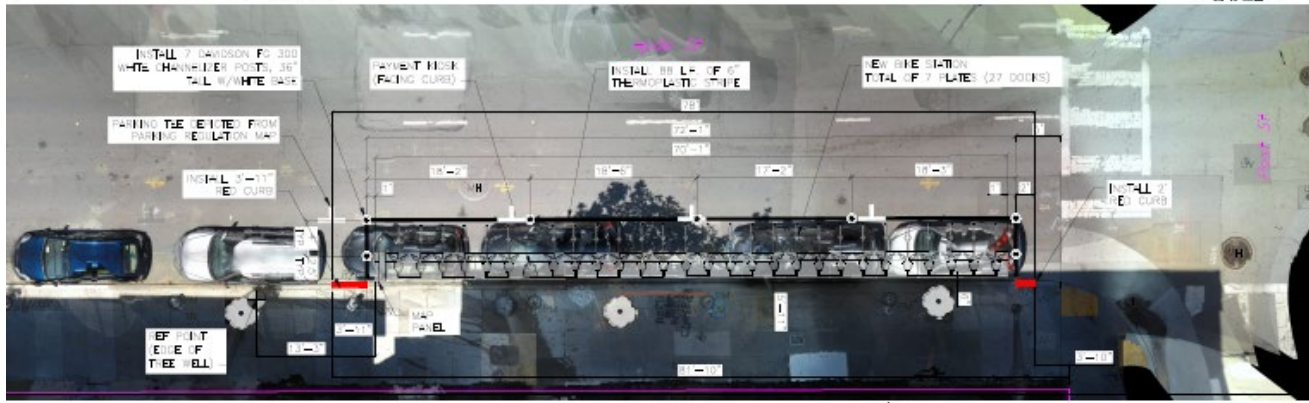
PLAN REFERENCE POINT
SITE LOCATION
HYDE ST 824

<p> Signal Pole One Red Arrow (One Forward) → ← One Red Arrow (Two Forward) → ← Street Light with Arm → Street Light → Signal Pole → </p> <p> ABBREVIATIONS BS = BUS STOP BR = BUS STOP CC = TRANSIT SIGNAL CONTROL (ARTIST) CR = CROSSWALK LP = LIGHT POLE MS = MAIL BOX WH = WALKWAY NS = NEIGHBORHOOD SIGN PS = PUBLIC STOP W/C = WHEELCHAIR </p>	<p> Public Works Two Red Curb/Post → ← Proposed Red Curb → ← Proposed Blue Curb → ← Proposed Yellow Curb → ← Proposed Green Curb → ← Proposed Silver Curb → ← </p> <p> TR = TRASH CAN TRS = TRASH UC = UTILITY CABINET V = UTILITY VALVE VLT = UTILITY VALVE W/C = WHEELCHAIR CURB W/C = WHEELCHAIR CURB W/C = WHEELCHAIR CURB W/C = WHEELCHAIR CURB W/C = WHEELCHAIR CURB </p>
---	---

- SITE NOTES**
- ON-STREET SITE
 - VETERAN PARKING
 - ADJACENT TO 885 POST ST



NEIGHBORHOOD MAP
HYDE ST 824



Conference Line: 1-888-251-2909 (use participation code: 4584731)
To comment on an item, press "1" and then "0" when prompted.

14. ESTABLISH – NO STOPPING EXCEPT BICYCLES ESTABLISH – BIKE SHARE STATION

Holloway Avenue, north side, from 13 feet to 101 feet east of Arellano Avenue (82-foot station with red zones on either side) (Supervisor District 7) ♦
Project Contact: Daniel Carr, Daniel.Carr@sfmta.com



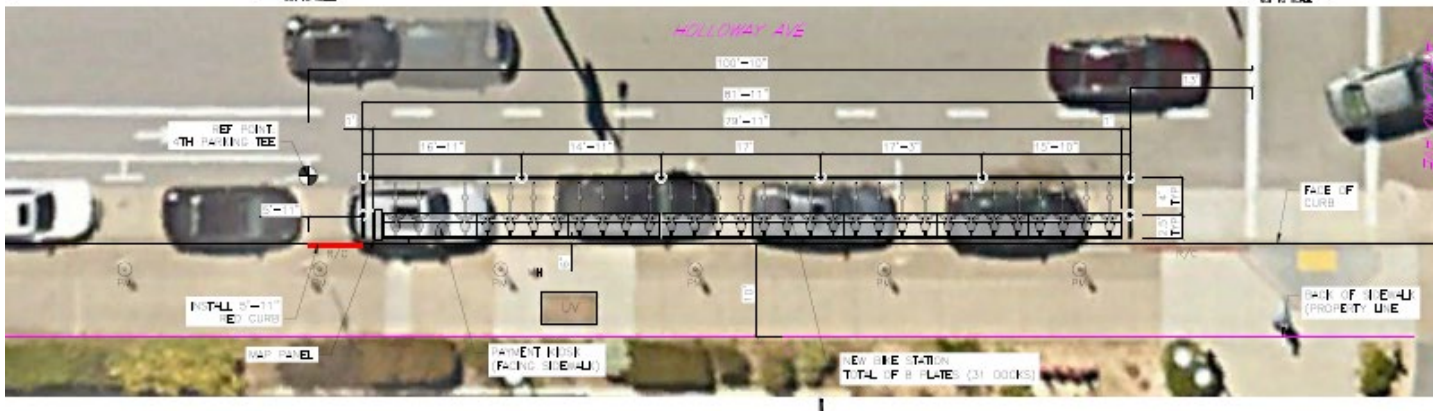
PLAN REFERENCE POINT SITE LOCATION Source: Google Street View, JULY 2020

Street Plan One Way (One Direction) One Way (Two Direction) Street Light with Arm Street Light Utility Pole Signal Pole		Parking Markings Two-Way Green/Blue Proposed Red Curb Proposed Blue Curb Proposed Yellow Curb Proposed Green Curb Proposed White Curb	
ABBREVIATIONS BS = BUS STOP BR = BUS STOP CC = TRAFFIC SIGNAL CONTROL CORNER CR = CROSSWALK DR = DRIVEWAY LP = LIGHT POLE MR = MAIL BOX MW = METER NS = NON-RESIDENT SIGN PB = PUBLIC BOX R/C = RETROFIT			
ABBREVIATIONS T = TRUCK CURB TR = TRUCK UC = UTILITY CURB V = VEHICLE DR = DRIVEWAY R/C = RED CURB Y/C = YELLOW CURB G/C = GREEN CURB W/C = WHITE CURB			



VICINITY MAP

- SITE NOTES**
- ON-STREET SITE
 - ADJACENT TO J. PAUL LEONARD LIBRARY (1600 HOLLOWAY AVE)
 - VETERAN PARKING

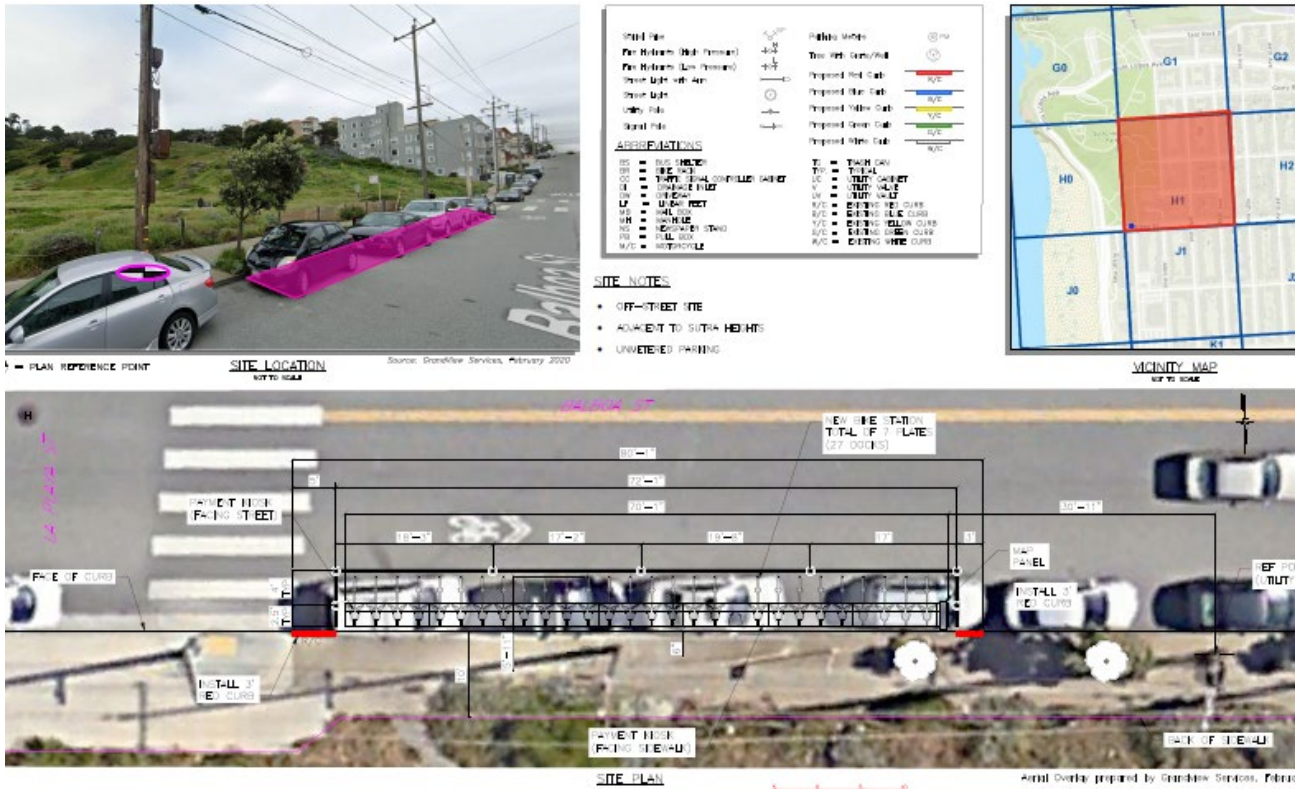


Conference Line: 1-888-251-2909 (use participation code: 4584731)
To comment on an item, press "1" and then "0" when prompted.

15. ESTABLISH – NO STOPPING EXCEPT BICYCLES ESTABLISH – BIKE SHARE STATION

Balboa Street, north side, from La Playa Street to 80 feet westerly (72-foot station with red zones on either side) (Supervisor District 1)

Project Contact: Daniel Carr, Daniel.Carr@sfmta.com



Conference Line: 1-888-251-2909 (use participation code: 4584731)
To comment on an item, press "1" and then "0" when prompted.

Public Hearing Decision Posting

Results will be posted by
5 PM next Friday

<https://www.sfmta.com/calendar/engineering-public-hearing-meeting-september-4-2020>

Referenced Materials

Engineering Public Hearing Agenda, July 17, 2020

 [Engineering Public Hearing Agenda, July 17, 2020](#)

Engineering Public Hearing Results, July 17, 2020

 [Engineering Public Hearing Results, July 17, 2020](#)

