




**SFMTA**  
Municipal  
Transportation  
Agency

# Embarcadero Enhancement Project

November 2014 Workshops

# Agenda

- **Welcome**
    - **Staff Introduction (5:30pm)**
  - **Presentation (5:50pm)**
  - **Small Group Exercise/Discussion (6:15pm)**
  - **Small Group Report Outs (7:25pm)**
  - **Conclusion/Wrap Up (7:50pm)**
  - **Adjourn (8:00pm)**
- 

# What is the Project?

- Planning
- Improve Safety
- Design Concept
- Bikeway



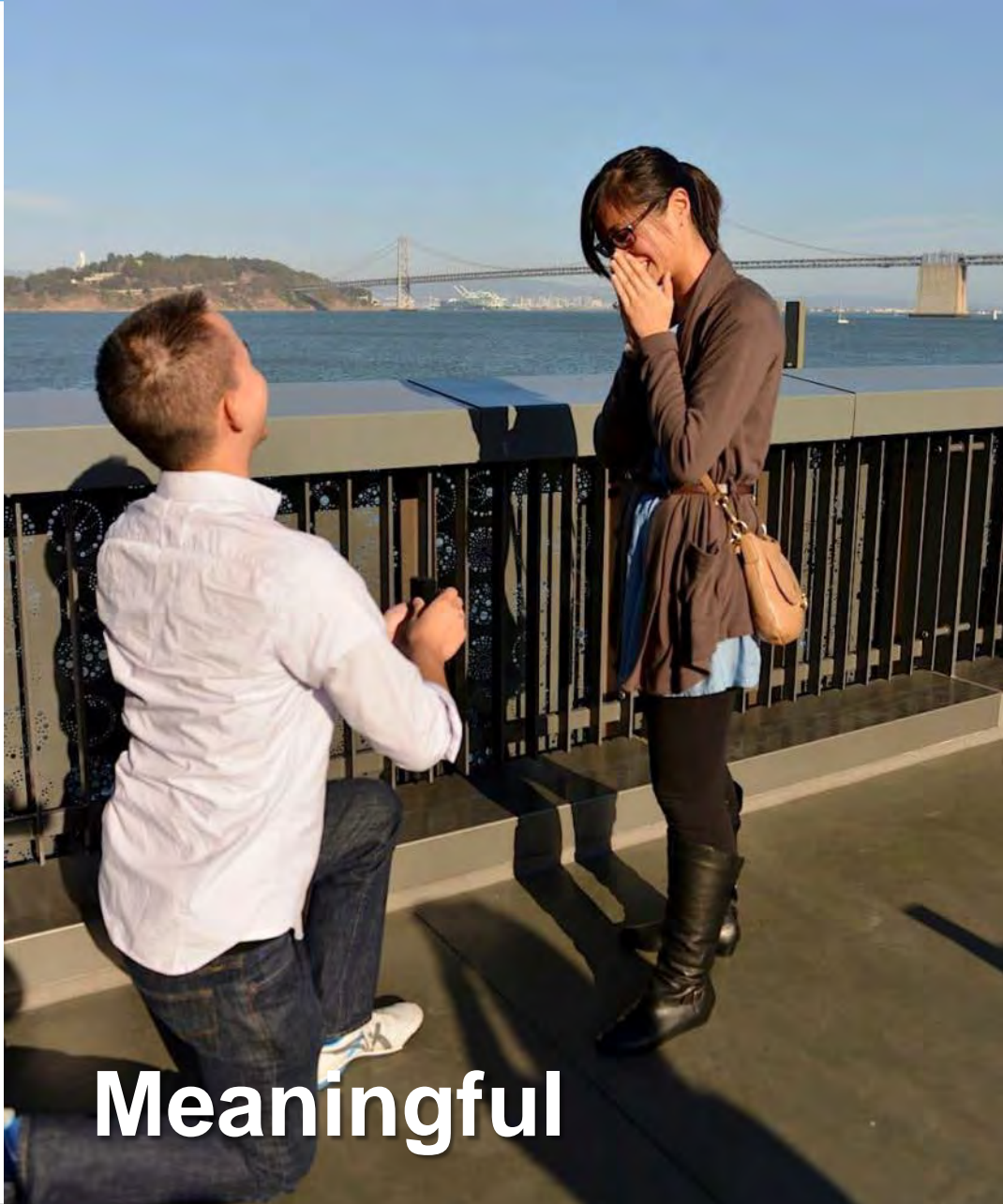
# Goals and Objectives



**Safe and Comfortable  
Access  
Efficient  
Economic Development  
Urban Design  
Integration**



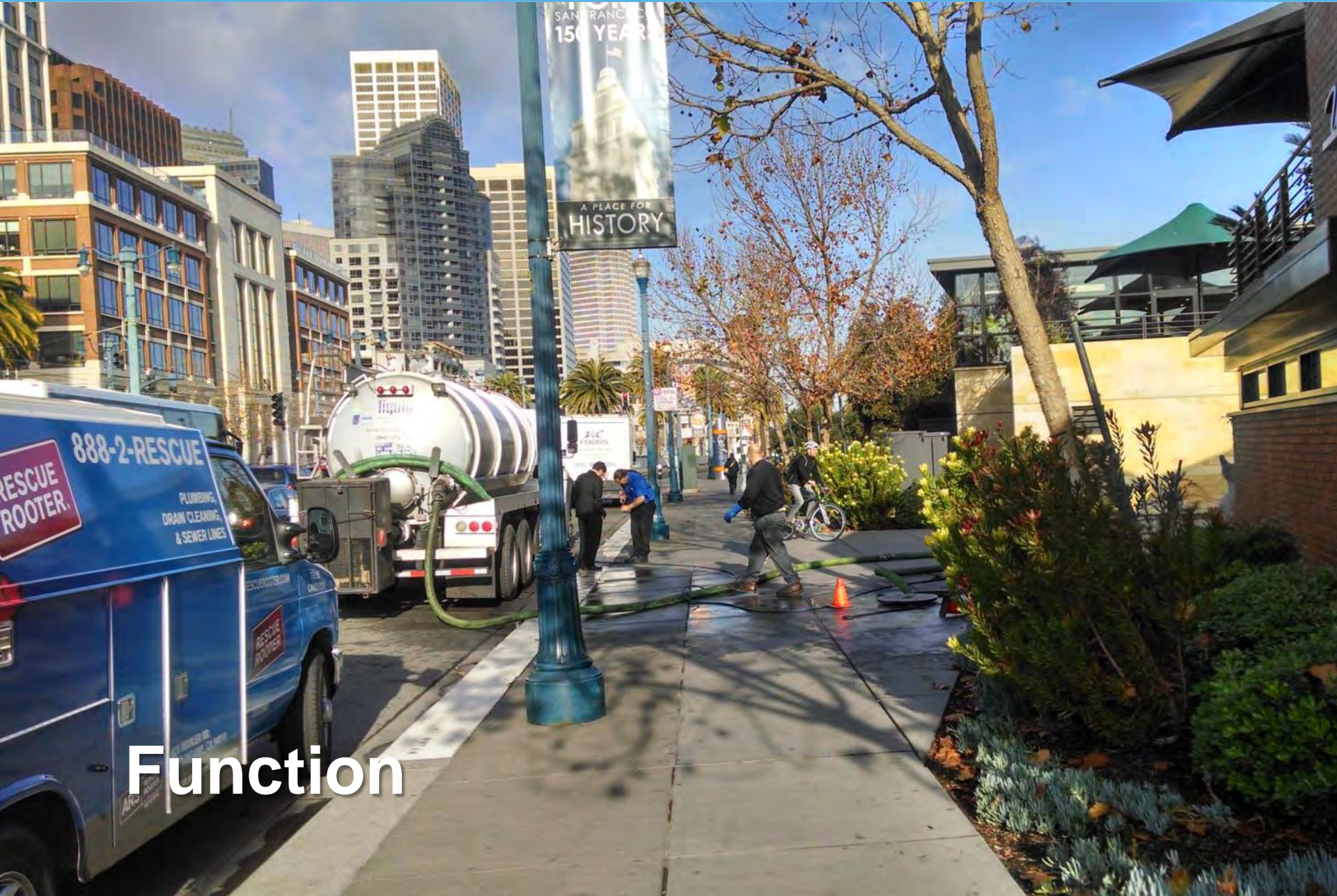
Iconic & popular



**Meaningful**



**Mobility**



Function





**Delivery**



**Various Needs**



**Conflict**



Uncomfortable

# Safety, Comfort, Access



*First Avenue Improvements, New York City*

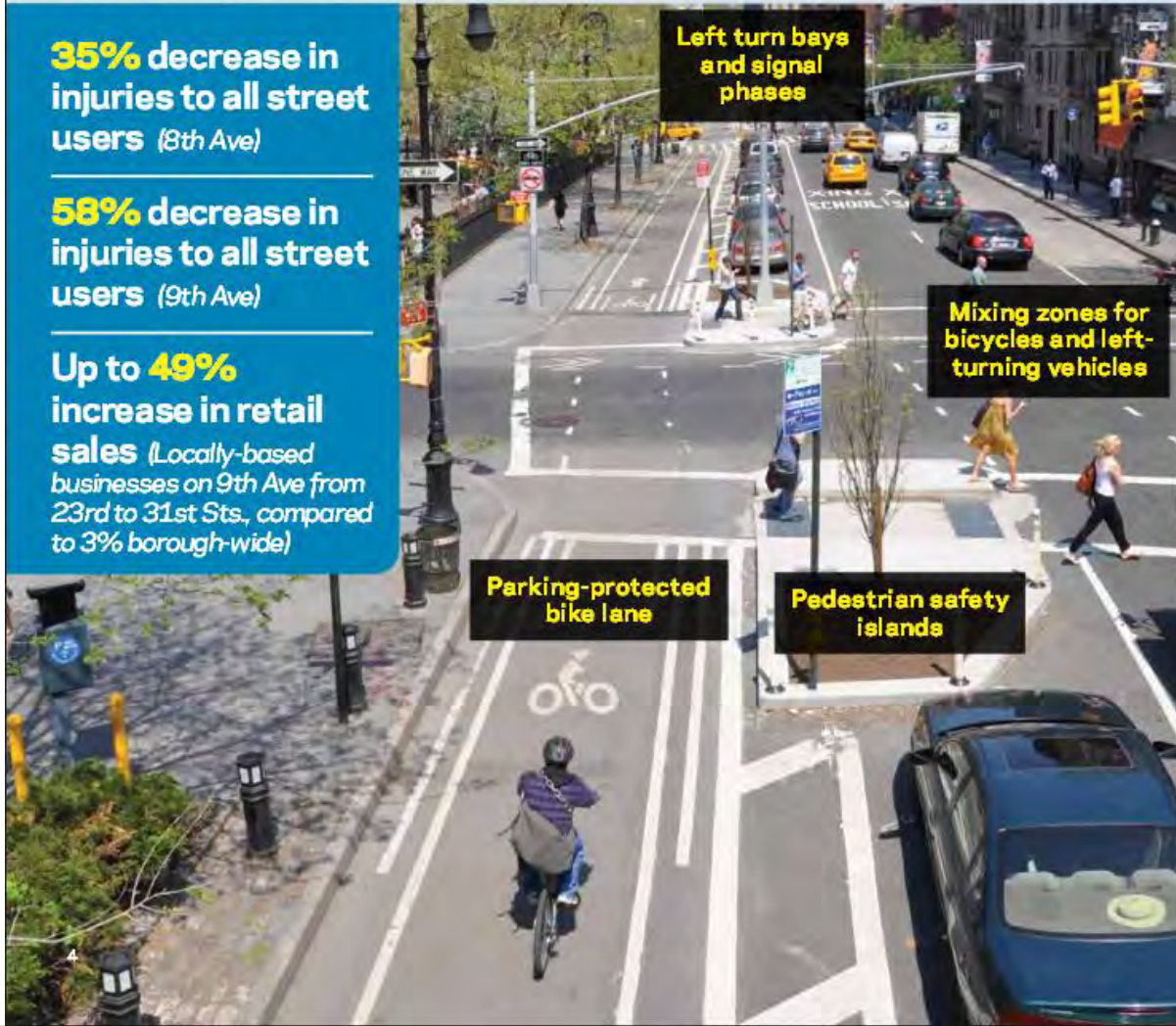
# Safety, Comfort, Access

First protected bicycle lane in the US:  
8th and 9th Avenues (Manhattan)

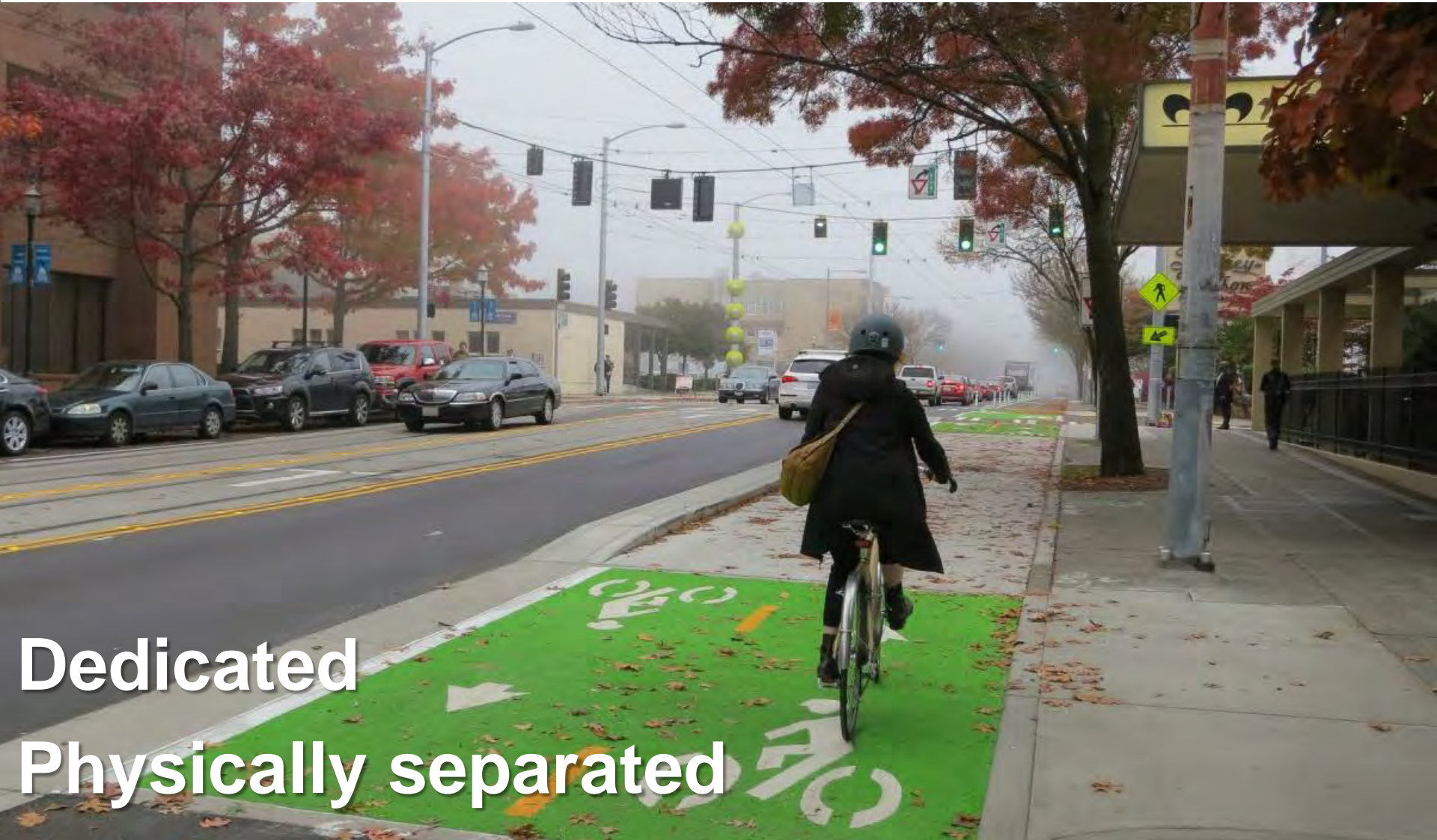
**35% decrease in injuries to all street users** (8th Ave)

**58% decrease in injuries to all street users** (9th Ave)

**Up to 49% increase in retail sales** (Locally-based businesses on 9th Ave from 23rd to 31st Sts., compared to 3% borough-wide)

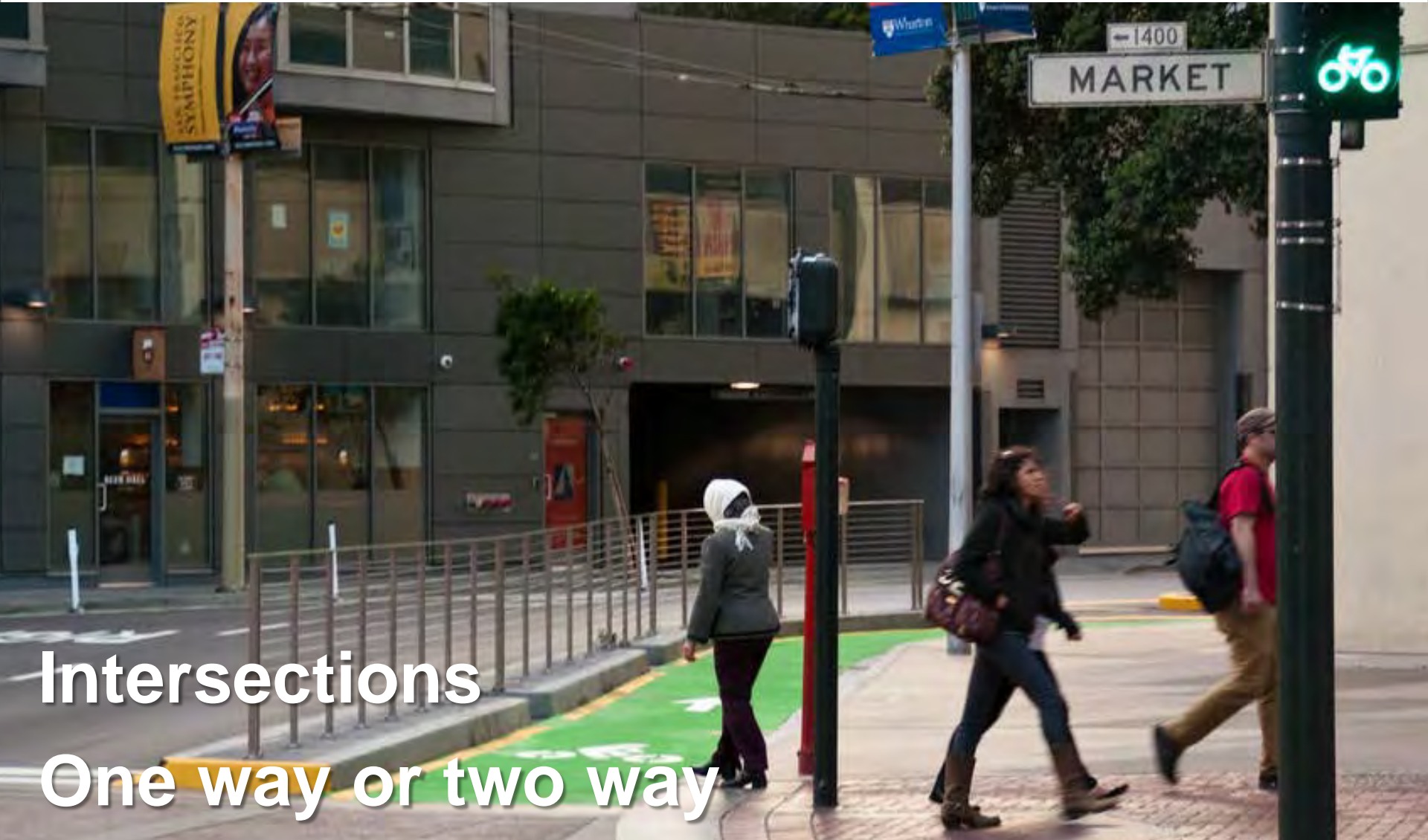


# What is a Bikeway?



**Dedicated**  
**Physically separated**

# What is a Bikeway?



**Intersections**  
**One way or two way**



# Project Benefits

**Safety**  
**Access**  
**Economic Vitality**



# What's Your Role?



- Help to design the ideal cross-section of The Embarcadero
- Make the road work for all users
- Be creative!
- Don't be held back by constraints (for now)
  
- Discussions around:
  - What type of bikeway would you like to see?
  - How would you make it fit?

# Tonight's Workshop

- Focus on “pinch-points”
- Narrowest/most constrained
- Themes will be applied to the corridor-wide designs



# Schedule

**OUTREACH /  
AWARENESS**

**SUMMER 2014**

**DESIGN  
ALTERNATIVES**

**FALL 2014 - SPRING 2015**

*- Design Workshop Series -*

*We Are  
Here*

**PREFERRED  
CONCEPT**

**SUMMER - FALL 2015**

**ENVIRONMENTAL REVIEW, DETAILED  
DESIGN & CONSTRUCTION**

*To Be Determined (NOT FUNDED)*

# Assumptions/Considerations

Protected  
Limited to the Embarcadero  
Muni  
Mobility



# Potential Design Options: Two-Way



# Potential Design Options: Two-Way



# Potential Design Options: Two-Way



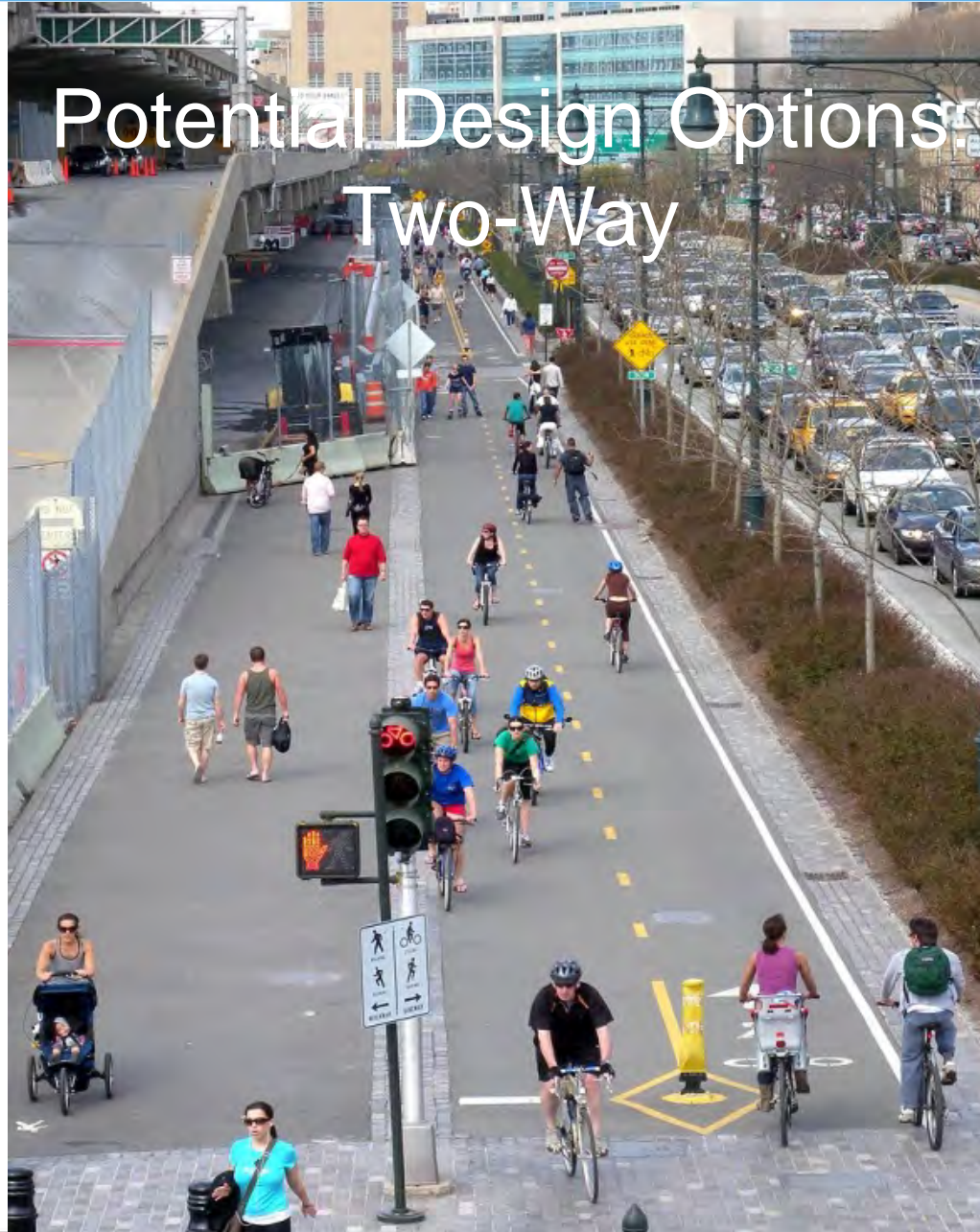




# Potential Design Options: Two-Way



# Potential Design Options: Two-Way



# Potential Design Options: Signs and Signals



# Potential Design Options: Two-Way



# Potential Design Options: Two-Way



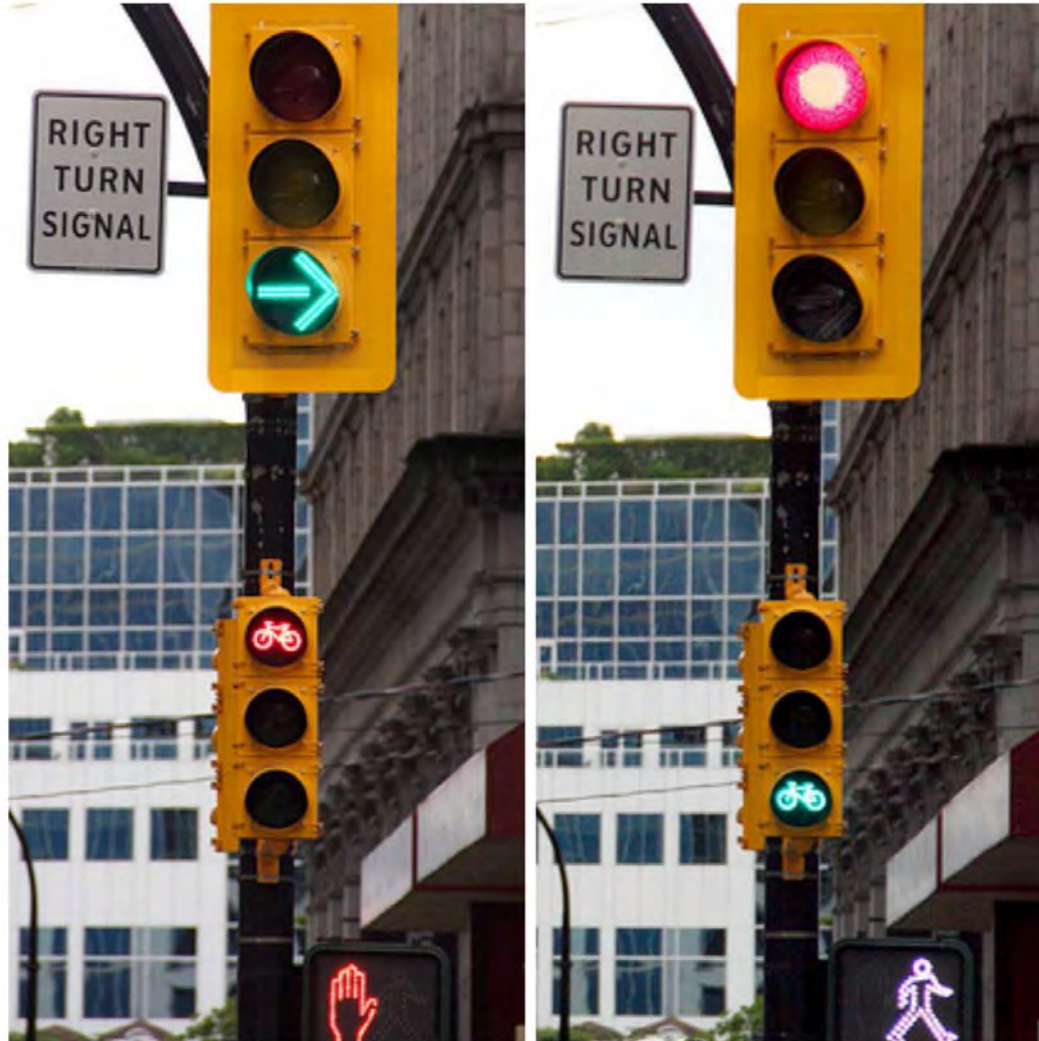
# Potential Design Options: One-Way



# Potential Design Options: One-Way



# Potential Design Options: Signs and Signals





# Potential Design Options: One-Way



# Potential Design Options: One-Way



# Potential Design Options: One-Way



# Potential Design Options: Intersection Treatments



# Potential Design Options: Intersection Treatments



# Potential Design Options: Total Inspiration



# Thank You!



- Pier 39/Beach Street
- Bay Street/Alcatraz Landing
- Chestnut/Sansome Streets/Pier 31
- Battery/Lombard Streets/Pier 27
- Broadway