



SFMTA
Municipal Transportation Agency

The background of the slide is a photograph of a San Francisco cable car at Pier 39. The image is overlaid with a semi-transparent red filter. The cable car is white with black accents and has "PIER 39" and "ENTER AT REAR" visible on its side. A sign on the front of the car reads "EMBARCADERO LAST STOP FERRY BLDG".

BALBOA PARK STATION AREA UPDATE

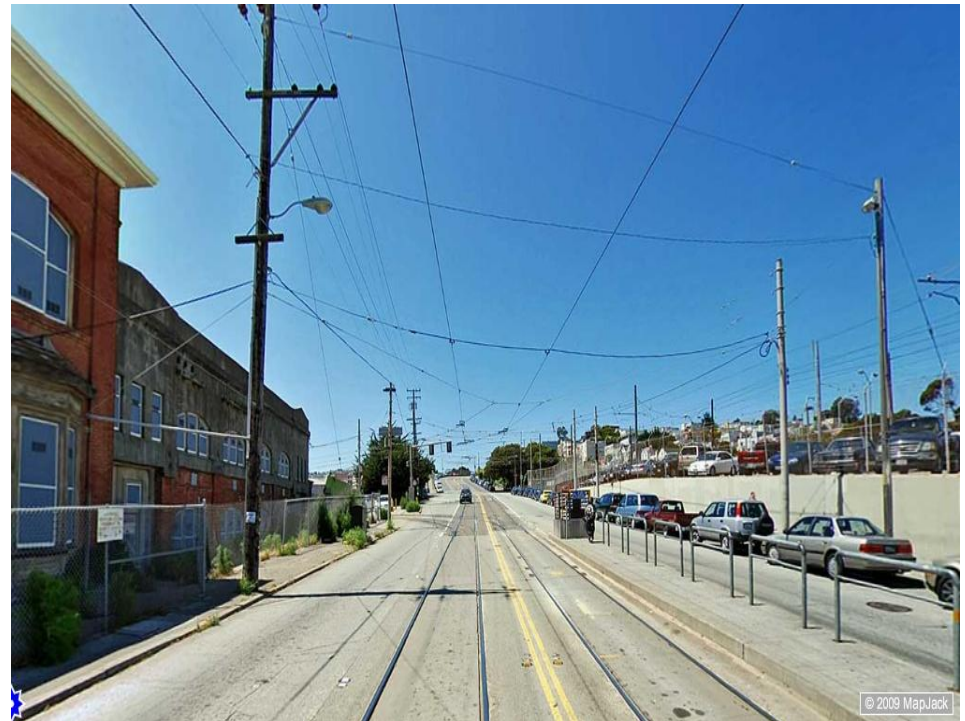
11 | 06 | 2012

SAN FRANCISCO, CALIFORNIA



Overview

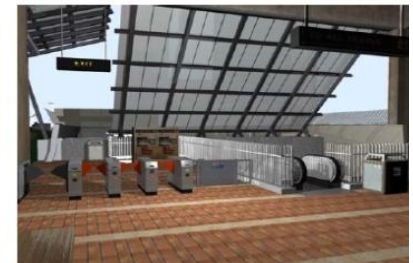
- **Issues and Opportunities**
- **Recent Accomplishments**
- **BP Station Capacity Study**
- **Fast Track Improvements**
- **Upper Yard Transit Village**
- **Community & Agency Outreach**





Big Squeeze, Big Opportunities

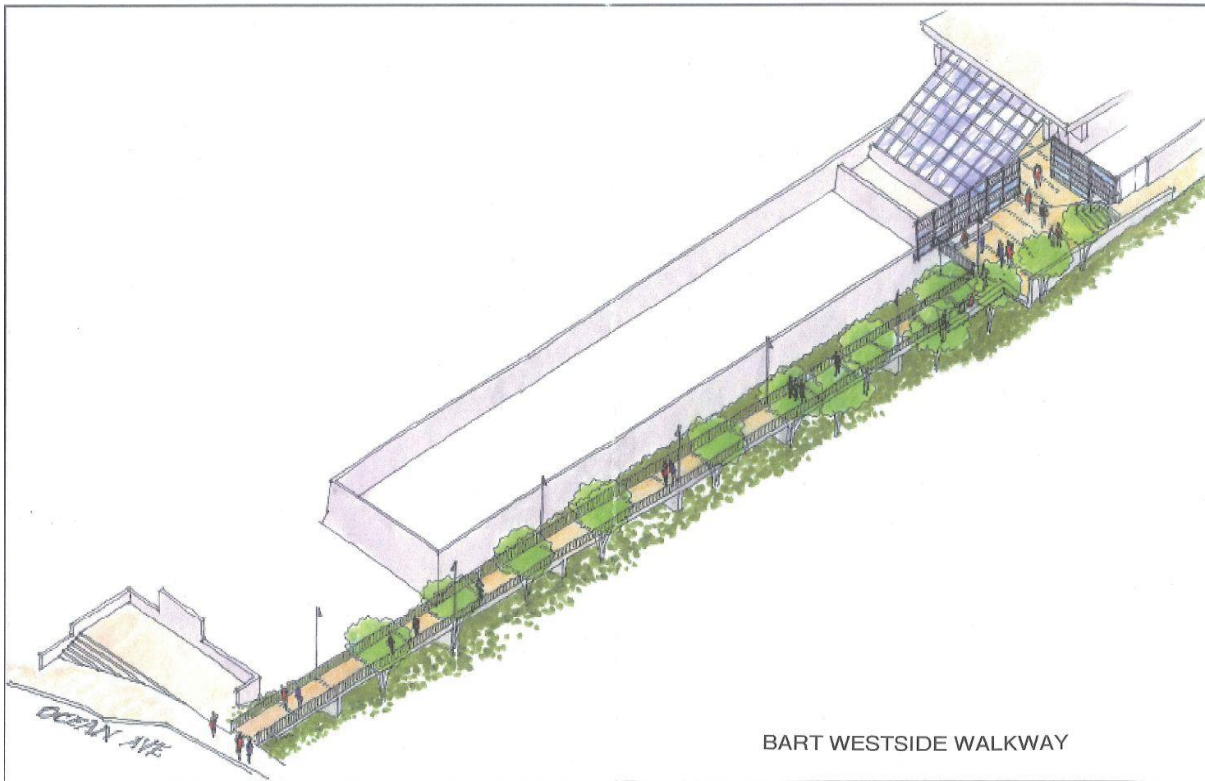
- **Limited Space for Multiple Modes**
- **Potential for Transit-Oriented Development**
- **Need for Rail Vehicle Storage**
- **Transit Boarding Areas Dispersed**
- **Transit Accessibility and Safety Issues**





Recent Accomplishments:

Westside Walkway and Ocean Avenue Pedestrian Crossing





Station Capacity Study

- **Purpose:**
 - Review Transportation Proposals in the Long-range Vision
 - Develop Short/Mid-range Improvement Projects
- **Consultant Team Led by Jacobs Engineering**
- **Technical & Policy Input for Investment Decisions**
- **Implementation & Funding Emphasis**





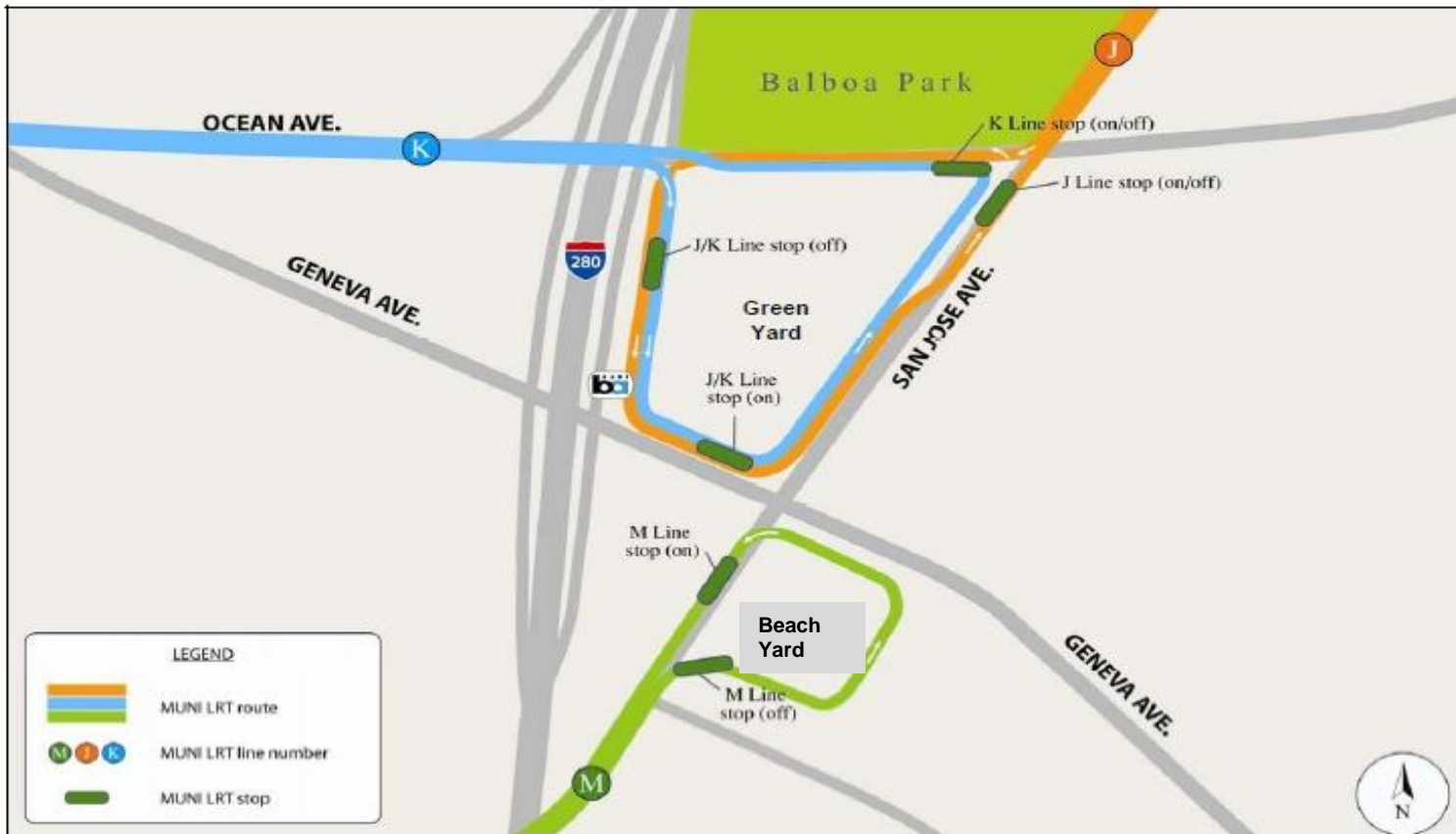
Better Neighborhoods Station Area Plan Vision

- **Knit Neighborhood Together with Freeway Deck and Development**
- **Improve Transit Access**
- **Upper Yard Transit Village**
- **Consider Green Yard Deck**





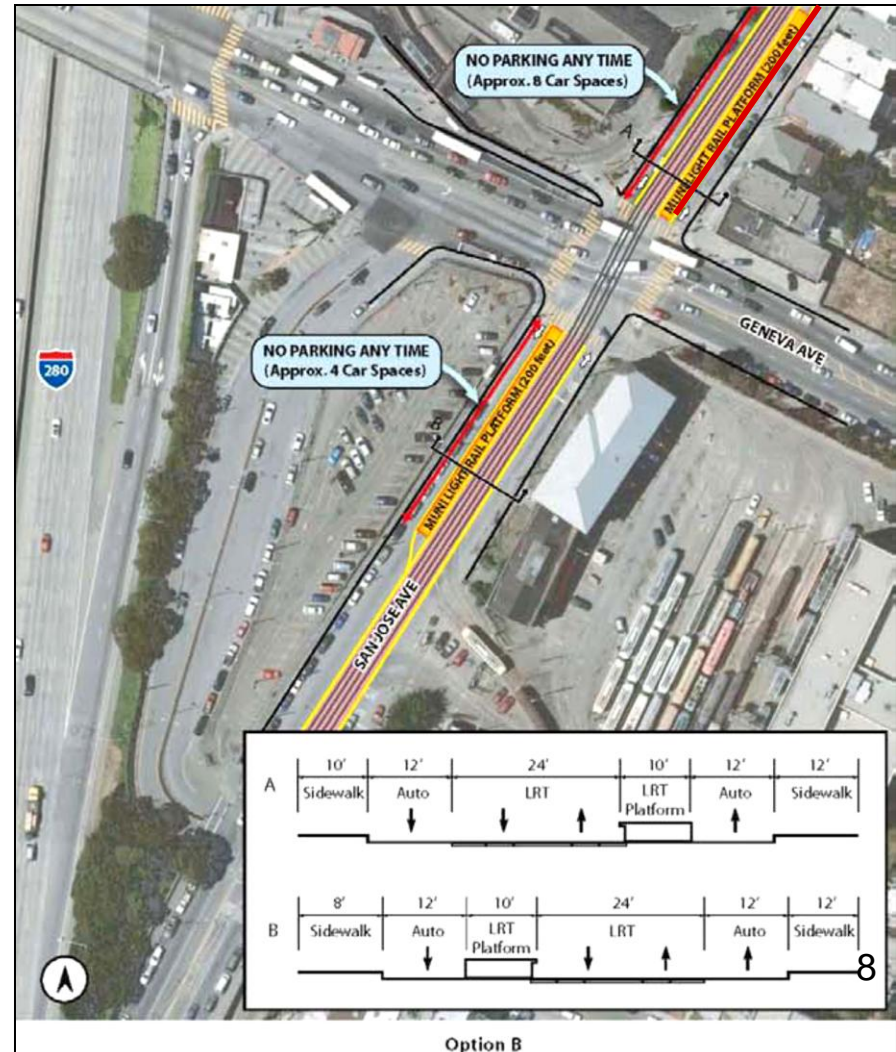
Transit Boarding Areas: Circulation





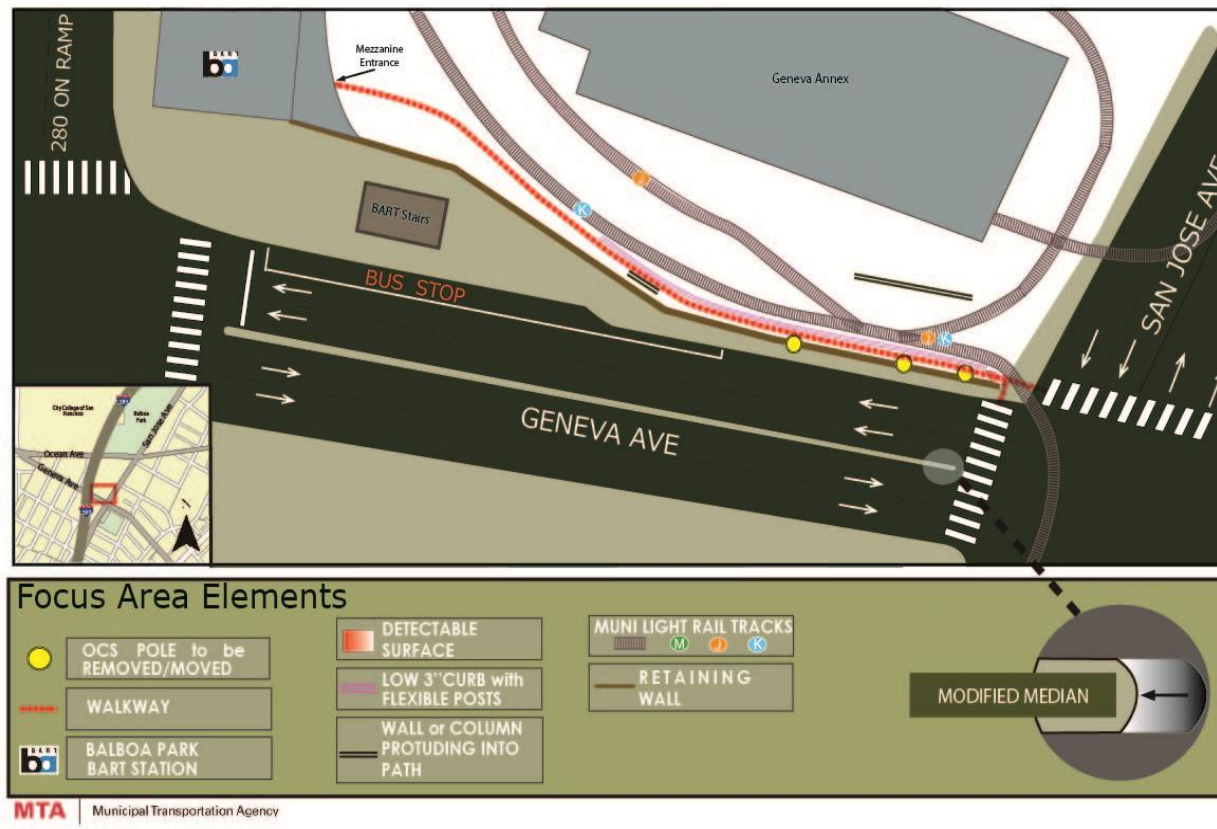
M Line Platforms on San Jose Avenue

- Investigate Move of Northernmost Stops to Geneva/San Jose Intersection
- Mid-Term Option





J/K Walkway



- Short Term Improvements
- More Extensive Solution Requires Major Track Changes



“Fast Track” Improvements



Wayfinding
Signs



Canopies



Sidewalk &
Accessibility
Improvements



Flashing Beacon on
I-280 Off-ramp at
Ocean Ave.



J/K Walkway Improvements



Fast Track Improvements

- **Conceptual Design Under Way**
- **Lifeline Funding Available**
- **OneBayArea Grant (OBAG) Application Being Prepared**
- **Prop B Streets Bond Project for Geneva Avenue Sidewalk Widening**



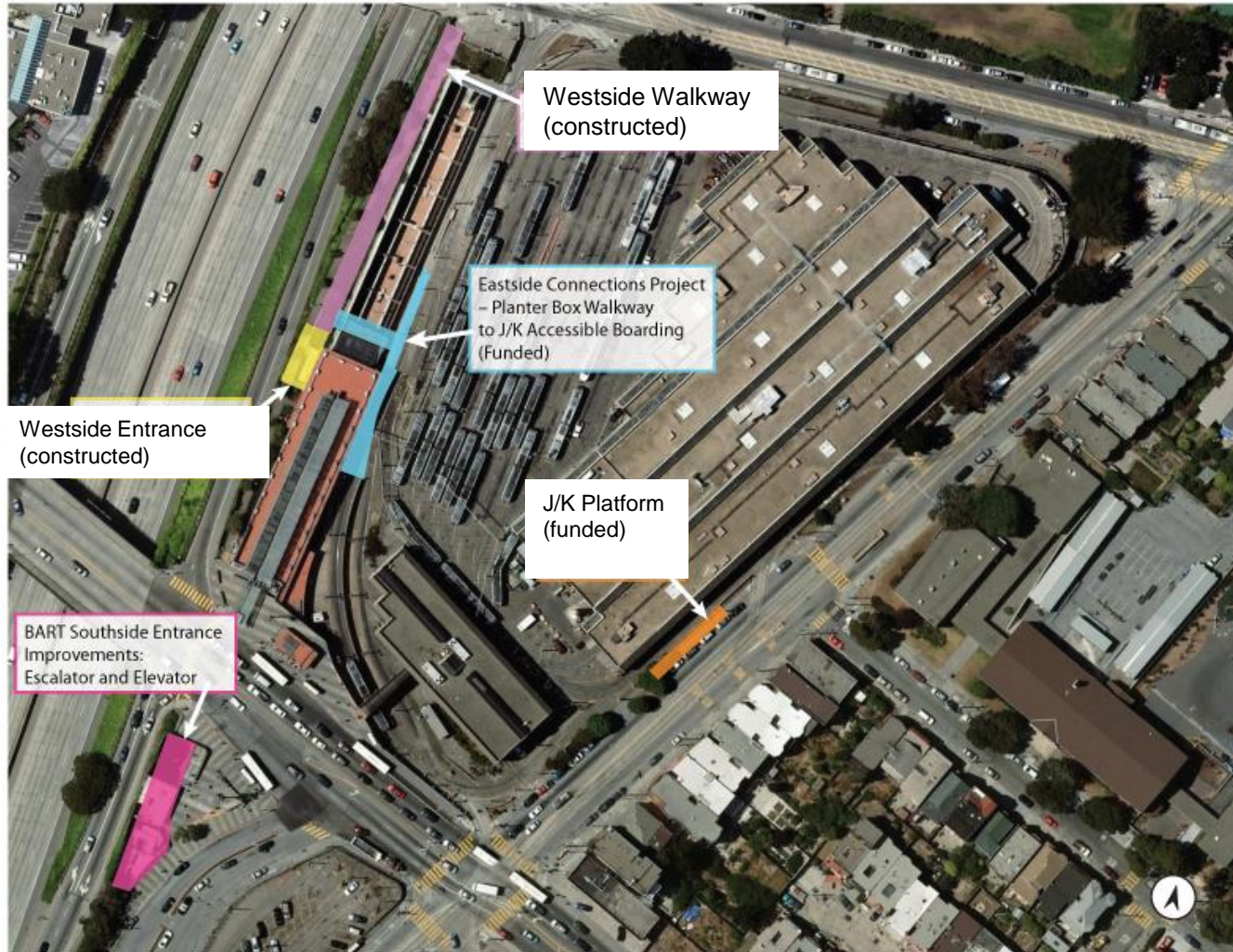
BART/SFMTA Projects

- **BART AMENITY IMPROVEMENTS:**
 - Real-Time Bus/BART Arrival Signs
 - Wayfinding Signs in BART Station
 - Lighting in BART Station
- **EASTSIDE CONNECTION**
 - Pedestrian Bridge Connecting Westside Walkway with J/K Boarding





BART/Muni Station Improvements



Upper Yard Transit Village

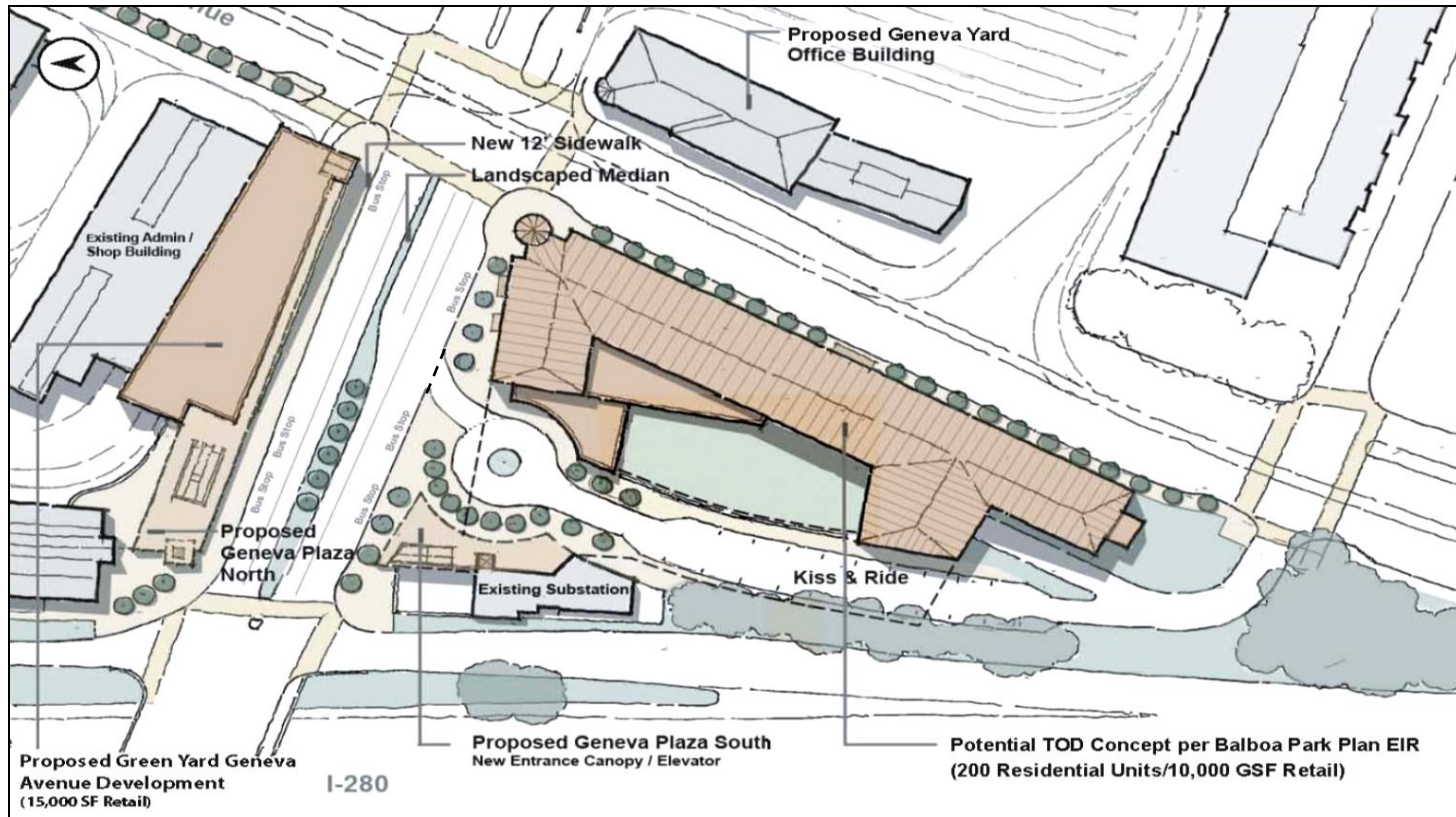


Rendering of a redesigned Geneva Avenue looking Southeast (towards Upper Yard development).

- **Increase Transit Ridership**
- **Help Revitalize Station Area**
- **Provide Affordable Housing and/or Community Services**
- **Support Regional Environmental Goals**



Upper Yard Transit Village

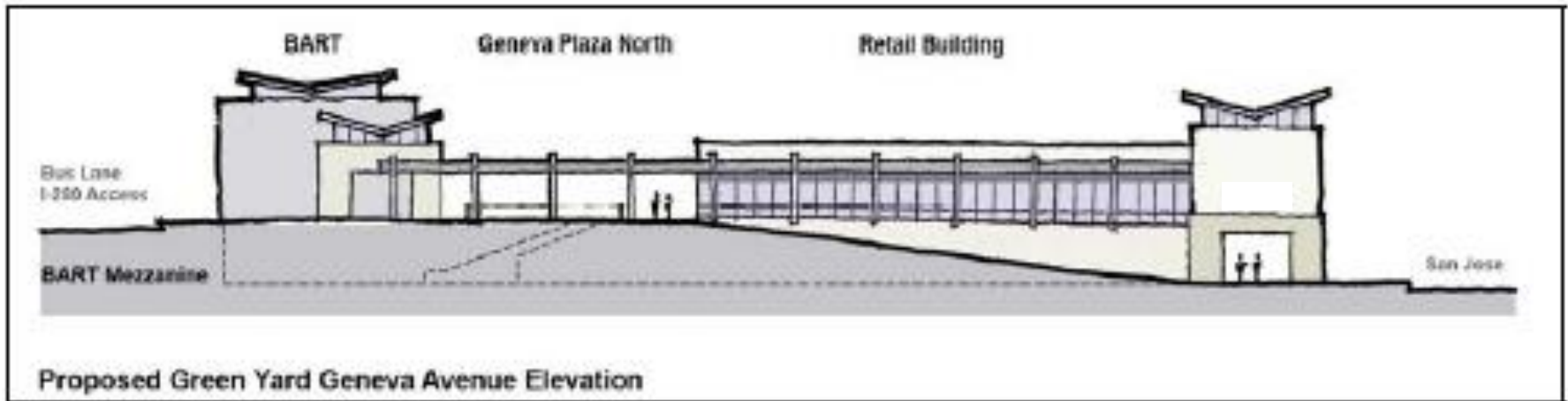


Note: This is not a design proposal, but an illustrative concept used to evaluate circulation and access impacts.



Geneva Avenue/Green Yard “Gap” Transit-Oriented Development

- Retail Building Next to the North Side Geneva Avenue Bus Loading Area
- Long-Term Option





Community and Agency Outreach

- **Extensive Outreach for Recent Projects**
- **BP Community Advisory Committee To Meet Quarterly**
 - Staffed by SFMTA and SFCTA
- **Technical Advisory Committee Involves Other Agencies**

