

ConnectSF

July 26, 2017

Engineering, Maintenance, and Safety Committee



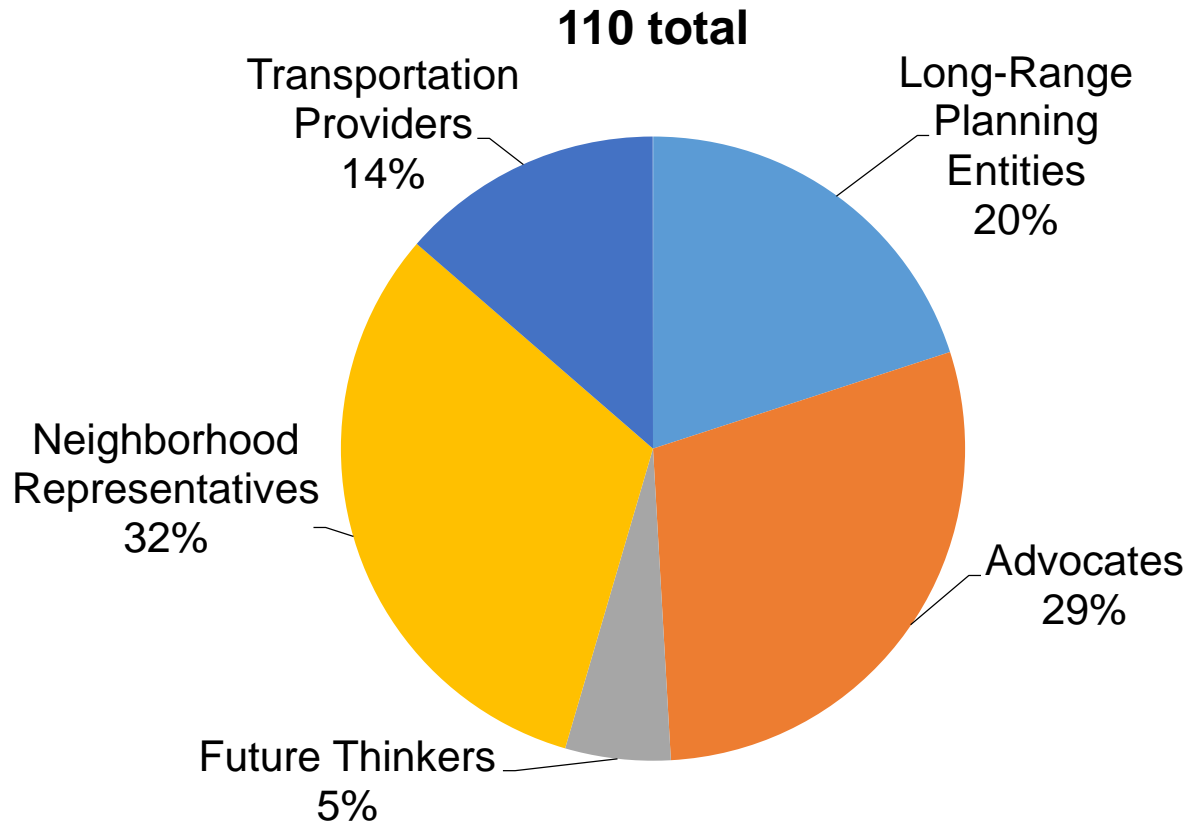
ConnectSF

Shaping our City's Transportation Future

Connect SF is a multi-agency collaborative process to build an effective, equitable, and sustainable transportation system for San Francisco's Future



Who is the Futures Task Force?







CONNECTSF FUTURES PRIMER

Envisioning the Future of San Francisco

Video by David ... CC BY-NC-ND 2.0

LIFESTYLE CHOICES AND VALUES

- Questions to Consider
- Articles
- Videos
- Visualizations

New generations are coming of age and impacting the world with new decision-making paradigms. Millennials are less interested in driving, while Boomers plan for post-driving life. Cities are becoming more attractive for all generations, while the dialogue around suburbs concerns retrofitting not expanding. Meanwhile, US culture is undergoing subtle but noticeable shifts in response to these changes.

Questions to Consider

- How might demographic and generational shifts shape lifestyle choices, values, and citizenry?
- How might preferences for where to live and work, and how to get around, evolve?
- How might new technologies enable different choices for owning and driving cars?

Articles



Millennials Lead the Trend to Less Driving, But What Happens As They Get Older?

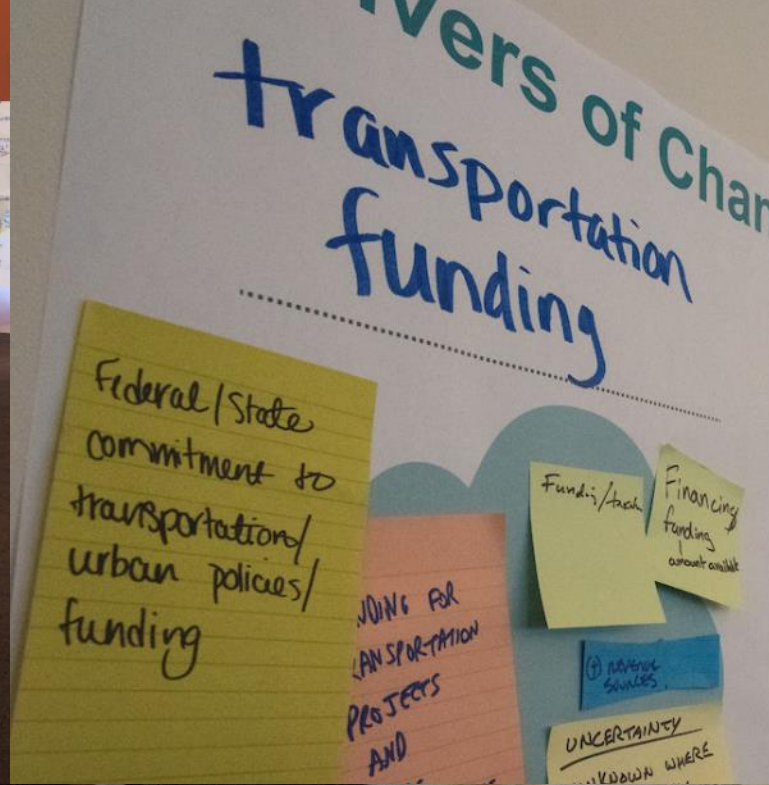
CityLab, May 2013

"This question lurks behind every celebrated trend story about the Millennial generation: Will this group really push systemic change (as the baby boomers did) in how Americans live, work and relate to each other (sharing cars, for instance, as opposed to owning them)? Or is this moment – with its associated driving patterns – a hiccup in history?"

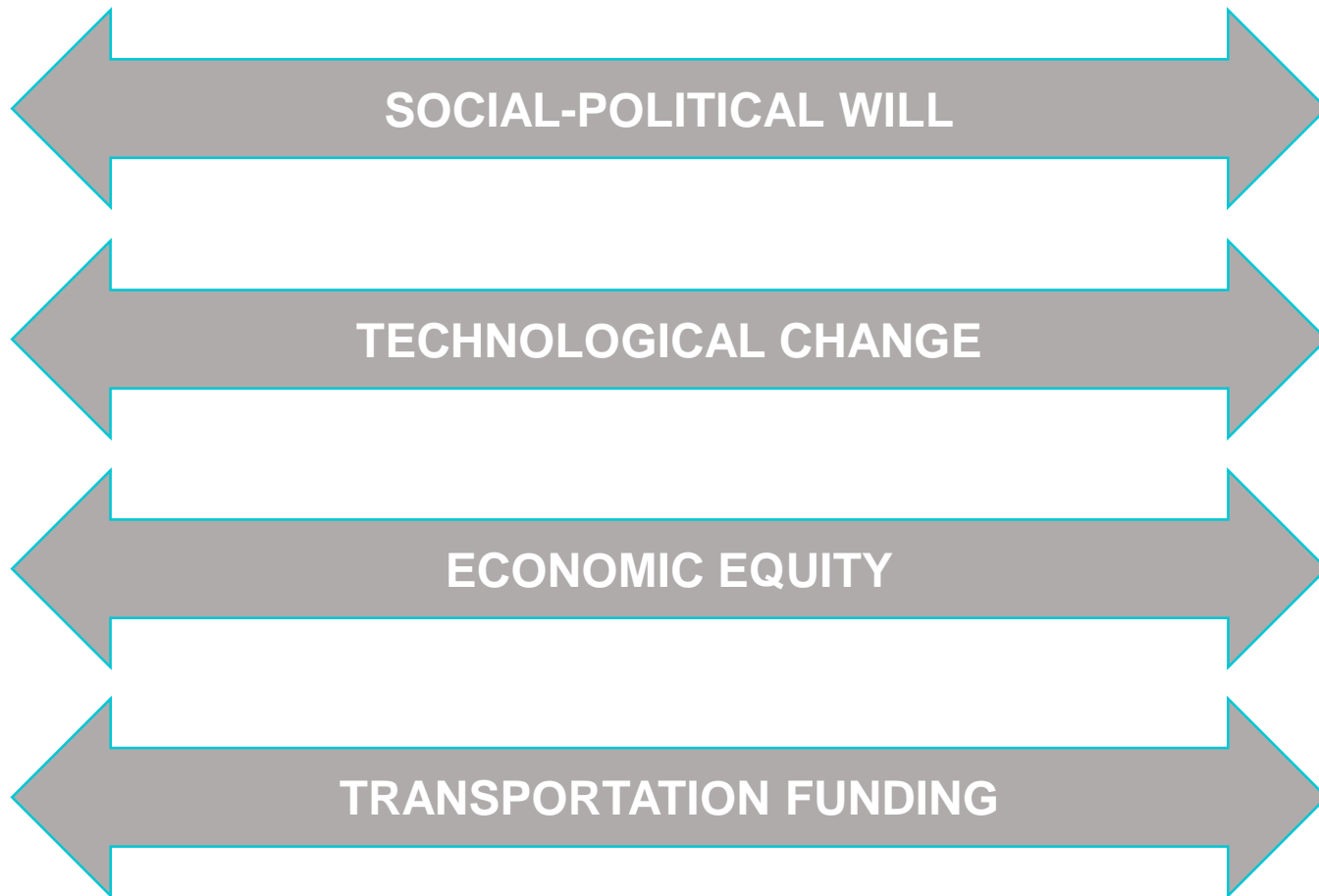


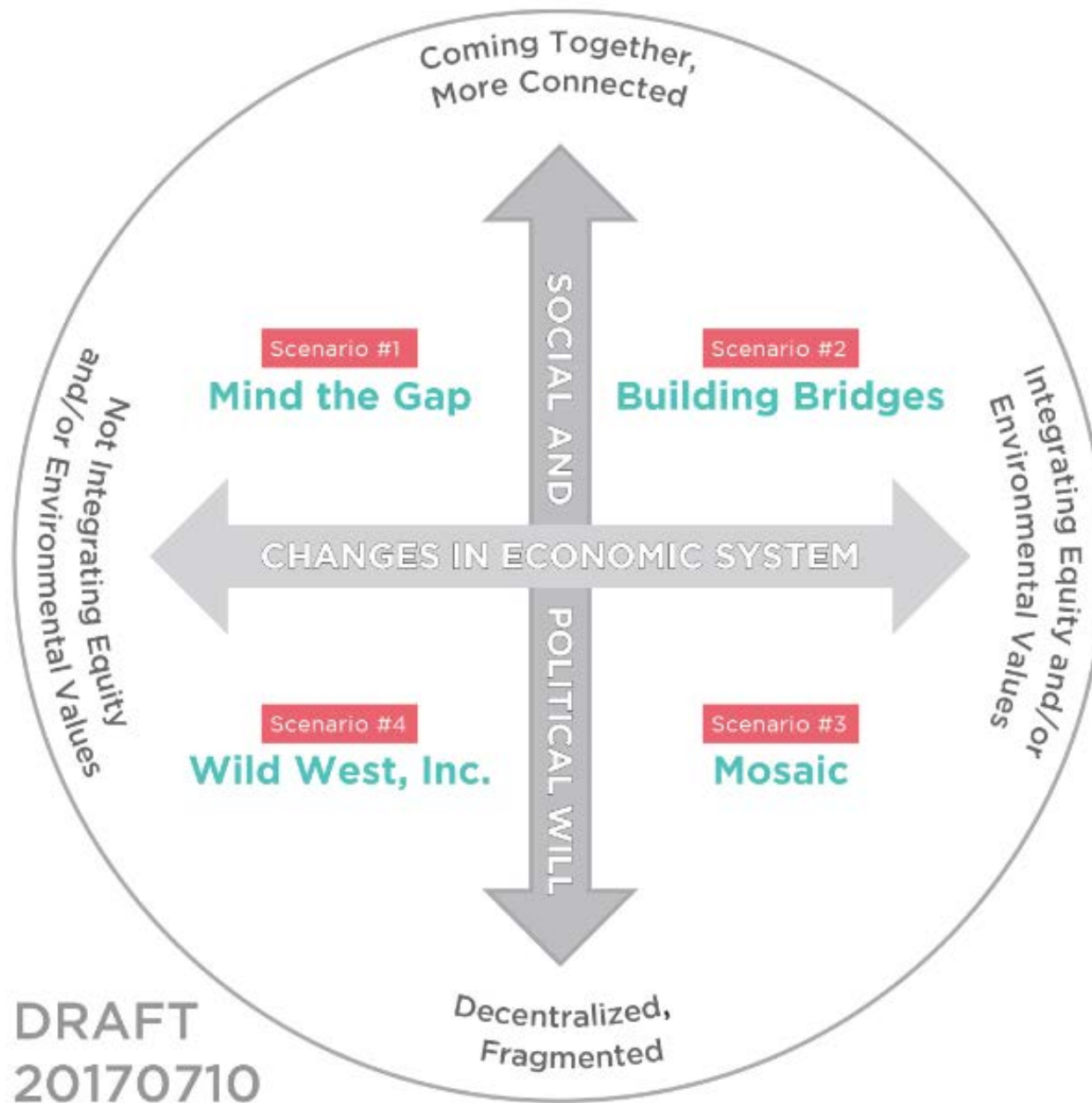
What Millennials Want, and Why It Doesn't Matter

Planetizen, June 2016



Scenario Development





DRAFT
20170710

DRAFT

Scenario #1

ConnectSF

Mind the Gap



The City is a desirable but elite enclave with services that work well for wealthy and established residents. While amenities for an urban lifestyle are abundant, life in San Francisco is not within reach for less wealthy people, who tend to live outside of the City and commute in to work and/or provide services.

How Did We Get Here?

Issues related to equity in public services grew increasingly contentious and unresolved. This was exacerbated by governance and technology that incrementally improved superficial aspects of people's lives but did not address seminal questions about health care, poverty, and other issues. Following a few bursts of residential growth, San Franciscans repeatedly rejected additions to the housing stock beyond 2040.

DRAFT

Scenario #1

ConnectSF

Mind the Gap



- What do our transportation and land use systems look like in this scenario?
- What early indicators might we see that we're headed towards this scenario?
- As a city, what actions should we take if this scenario came to pass?



Key Workshop Takeaways

- Economic Equity must be considered among the drivers of change
- Commitment to taking scenario planning outside of Futures Task Force and into public

The Role of the Public





Vision

Outcomes

To gain a deep and comprehensive understanding of community members' experiences moving throughout the city and their needs and priorities for the city's future transportation system.

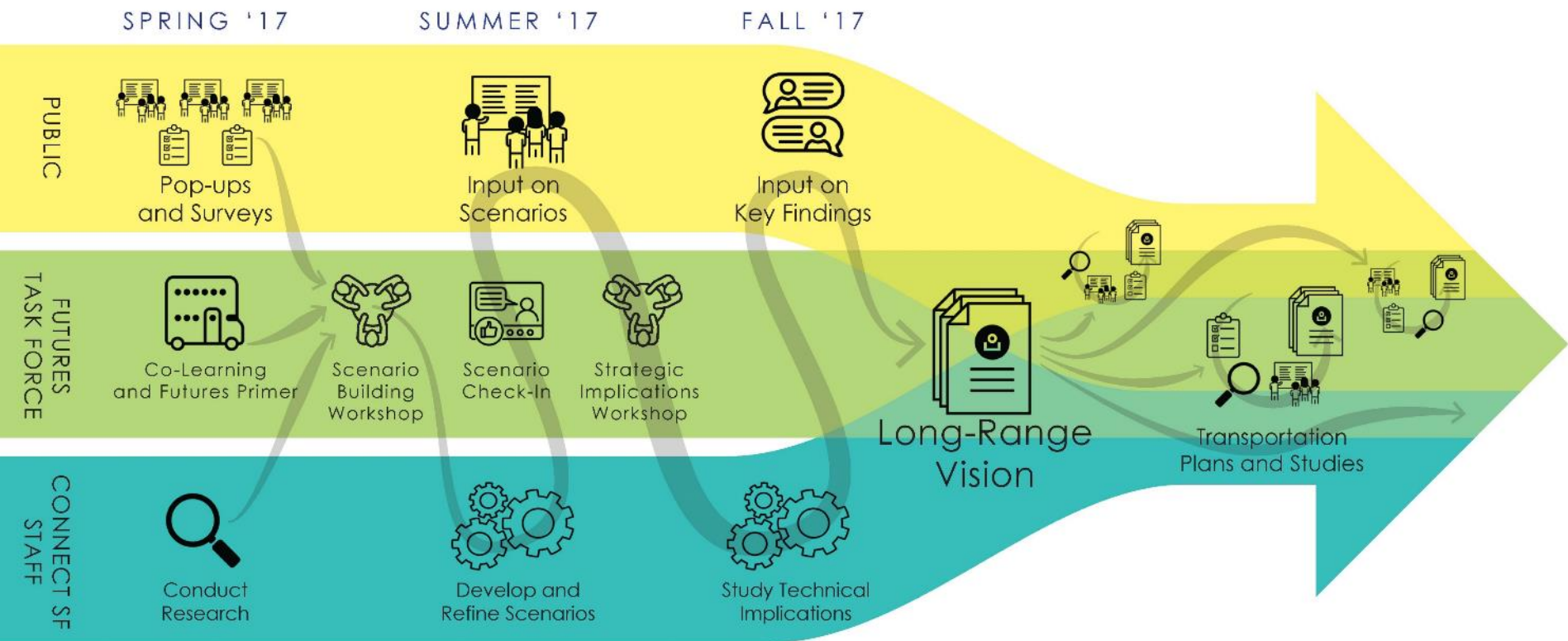
To create an overarching 50-year vision for the future of transportation in San Francisco.

An aerial photograph of a community meeting. A diverse group of people is gathered in a large room, looking at various informational displays and maps on easels. Some people are standing and talking, while others are sitting on chairs. The room has a high ceiling and large windows. The overall atmosphere is one of active participation and discussion.

**Tell us about your values
and priorities for the future**

**Let us know what the city
should be like for future
generations**

ConnectSF Process



ConnectSF

THANK YOU

For more information:

Email us at connectsf@sfgov.org

Visit our website at connectsf.org