

Balboa Park Station Modernization

Balboa Park CAC

August 25, 2015



Projects to Date



Phase 1 – Westside Walkway



Phase 2 – Eastside Connection



- Advertise
 - Award
 - NTP
 - SFMTA Coordinate
- September 2015
November 2105
January 2016
Early 2016

Projects to Date



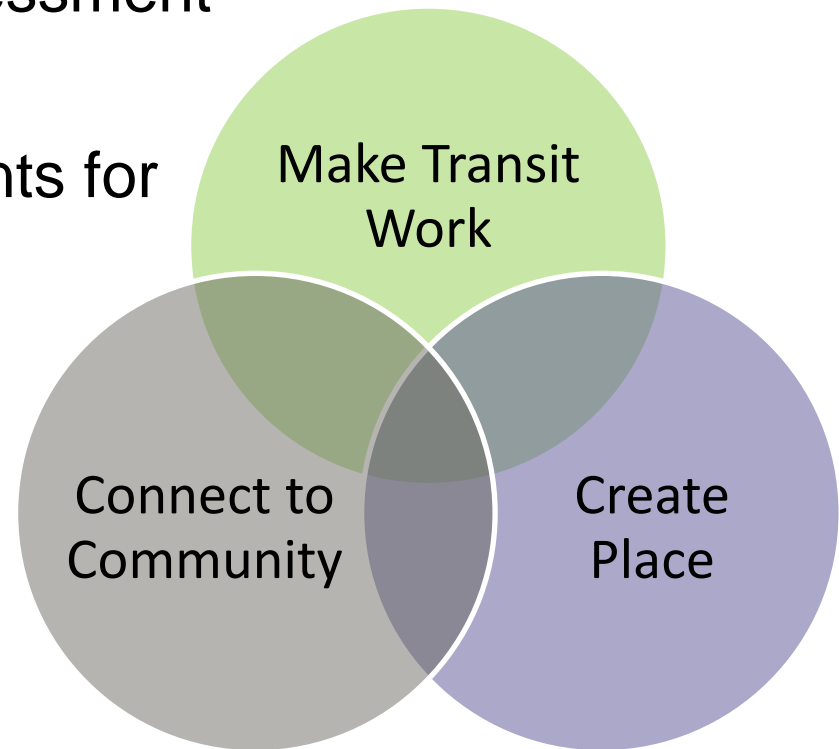
Phase 3 – Geneva Head House + Relocated Elevator (Concept Design Only)



Mission



- Transformative Improvements
- Comprehensive needs assessment & project prioritization
- Position station improvements for future funding opportunities



Goals & Objectives



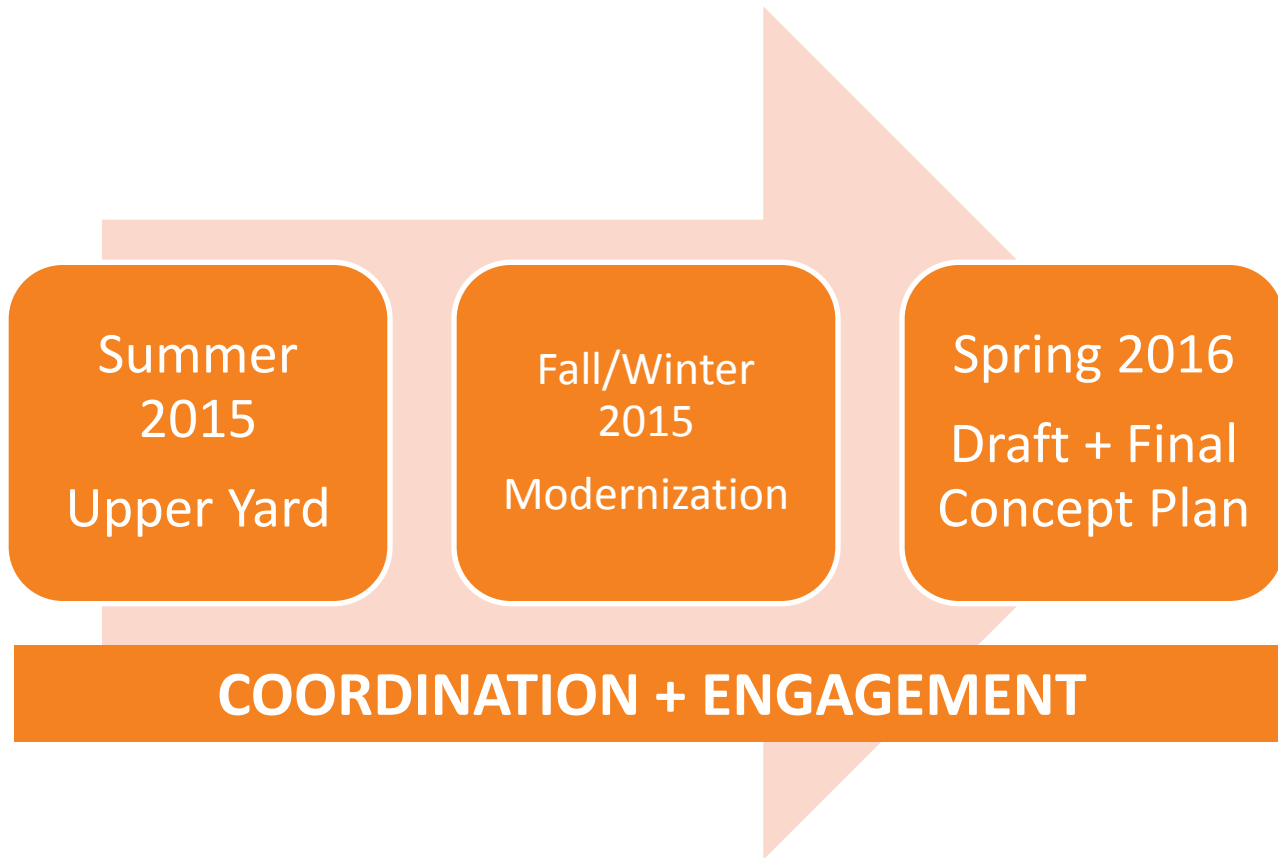
Make Transit Work	Connect to Community	Create Place
Maintain Reliability	Connect BART	Enhance Customer Experience
Increase Station Capacity	Expand Universal Design	Ensure Safety & Security
Upgrade Employee Facilities	Incorporate Community Input	Leverage Partnerships
Advance Sustainability		



Scope: Short to Long Term Needs

- Assess physical condition of station
- Assess future access, capacity + operational issues
- Develop Conceptual Design Alternatives + implementation framework
- Manage long term risk
- Provide a palette of potential improvements: core + secondary design scopes
- Engage community on customer-facing issues
- Anticipate new technology

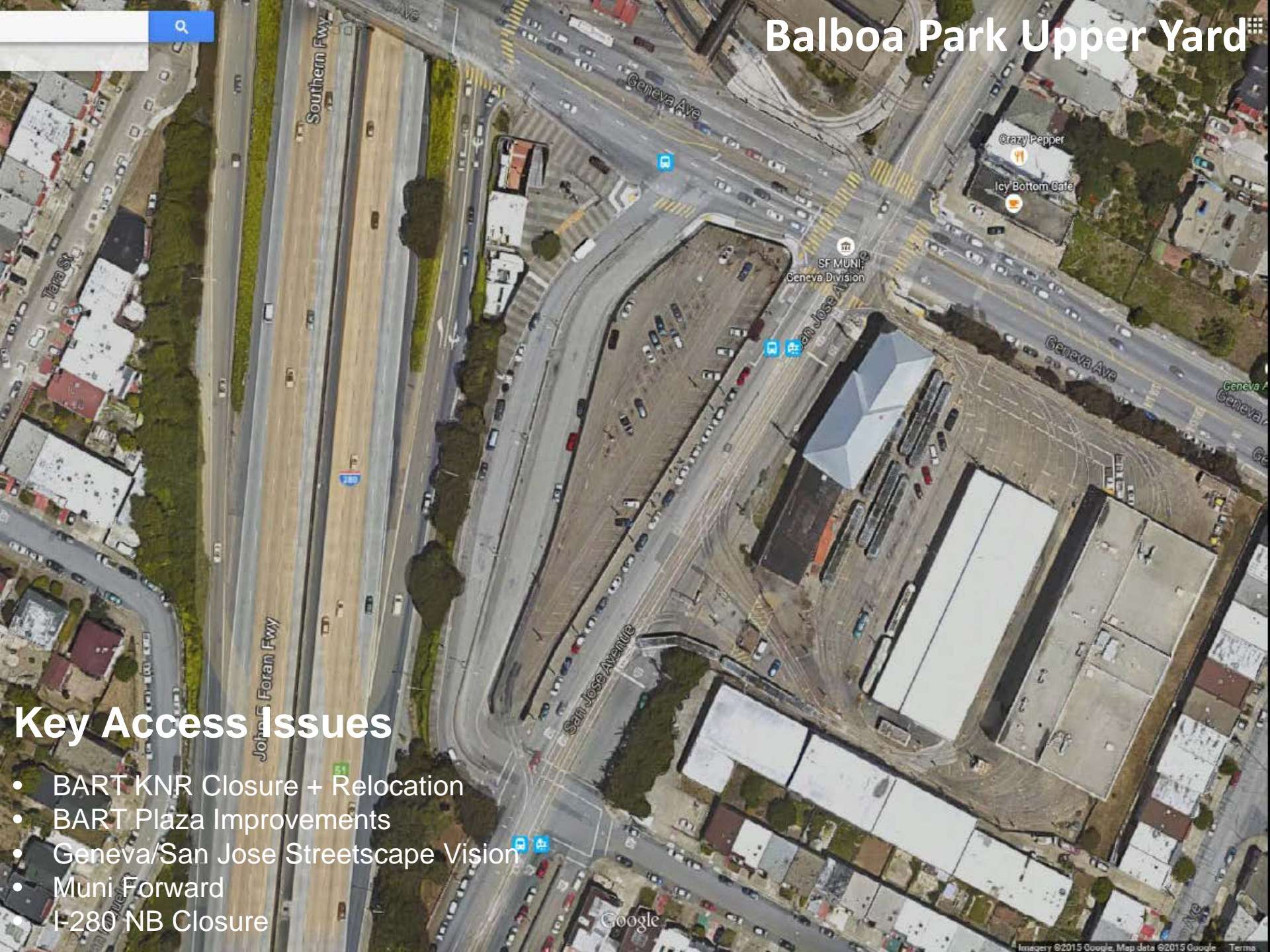
Process/Schedule



Balboa Park Upper Yard

Key Access Issues

- BART KNR Closure + Relocation
- BART Plaza Improvements
- Geneva/San Jose Streetscape Vision
- Muni Forward
- I-280 NB Closure



Strategy



- Ongoing Coordination with City
- Ongoing Community Engagement
- Package, Fund + Implement Improvements to support Upper Yard
- Also, seek funding for Modernization
 - Prop 1B
 - Prop K
 - Future SF Measures
 - 2016 BART Bond Measure (potential)
 - RM3 (?)
 - Others