



SFMTA

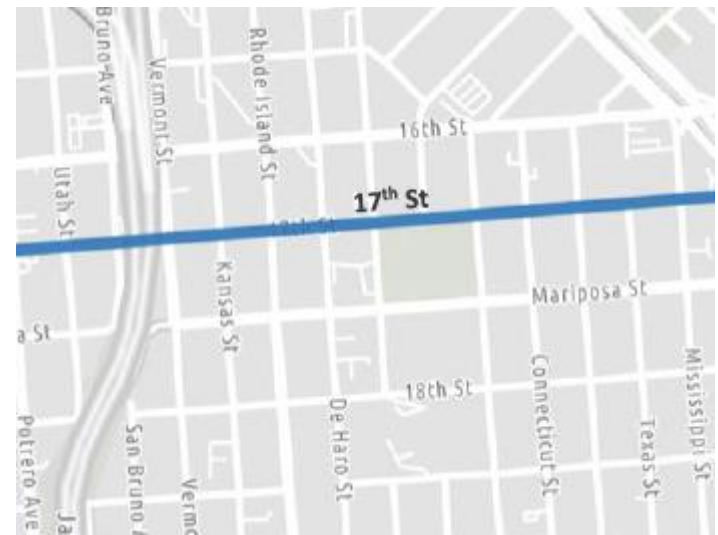
# 17<sup>th</sup> Street Quick-Build Project

SFMTA Board of Directors

March 5, 2024

# Project Background

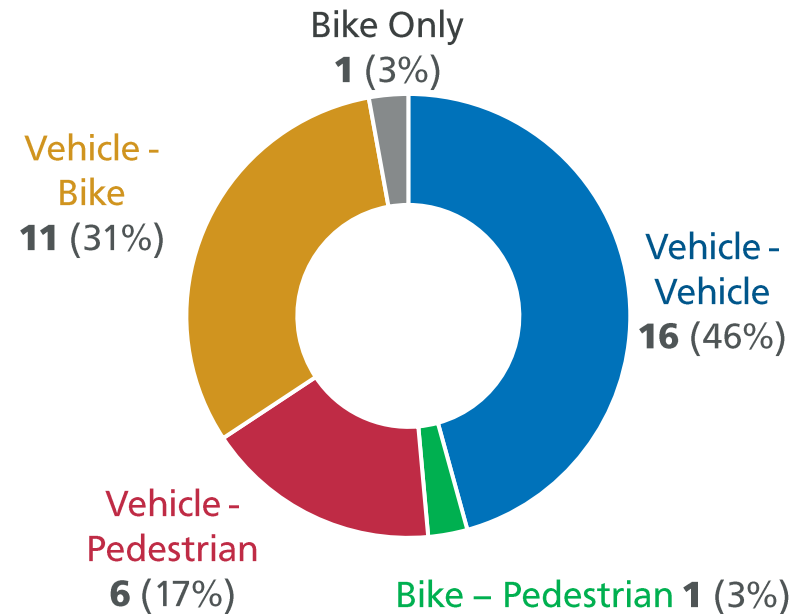
- Project location: 17<sup>th</sup> Street between Potrero Avenue and Mississippi Street
- Important bike connection: **bikes represent ~30-40% of all traffic** on this portion of 17<sup>th</sup> Street
- Project goal: to reduce the risk of traffic-related injuries and deaths, and increase safety and comfort for people traveling within this vibrant corridor



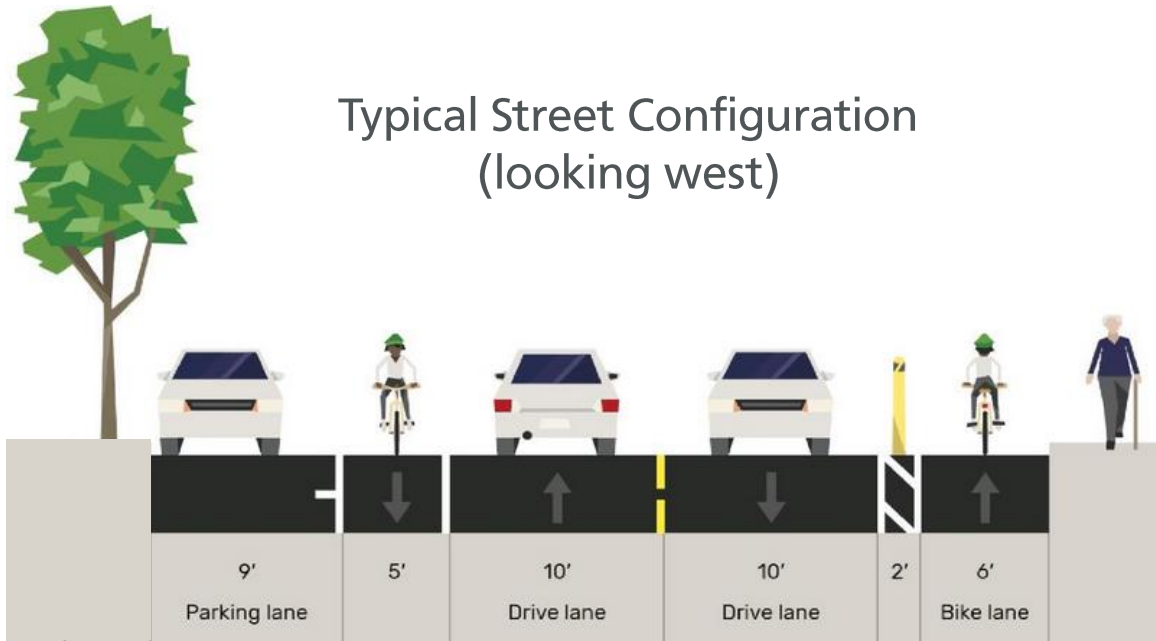
# Collisions at a Glance

- **35 total collisions** along project corridor from October 2018 - October 2023
- **19 collisions** involving a bicyclist or pedestrian

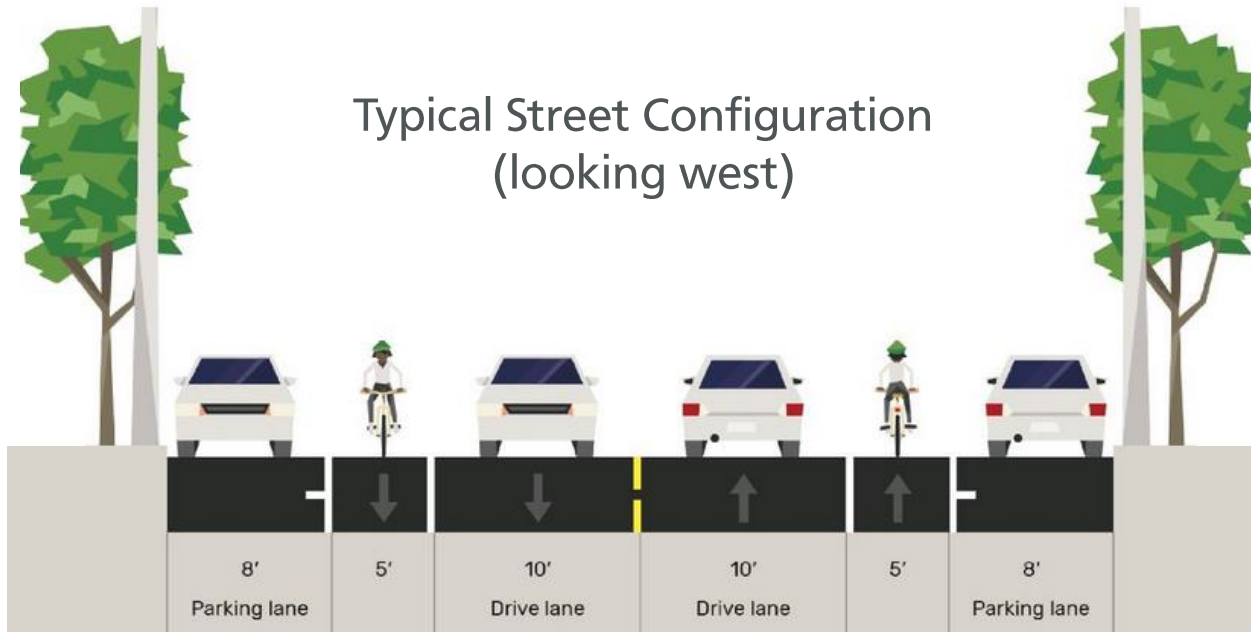
## All Collisions Along Project Corridor, by Mode



# 17<sup>th</sup> Street Today – Potrero to Rhode Island



# 17<sup>th</sup> Street Today – Rhode Island to Mississippi



# Stakeholder Engagement

## Phase 1: Initial Outreach & Corridor Needs Assessment

### Summer 2022 - Fall 2022

- 40+ stakeholder meetings & conversations + door-to-door outreach to discuss project goals and vision

### Fall 2022 – Winter 2023

- Ongoing stakeholder discussions and observations of circulation, parking, curb access, and loading needs.
- Outreach informed project design (e.g. which side of street to retain parking, loading zone placement, etc.)



# Stakeholder Engagement

## Phase 2: Design Feedback Period & Public Hearing

### Spring 2023 – Early Fall 2023

- June 2023 feedback period
  - Virtual Open House
  - Online “office hours” with project staff
  - Pop-up table event on 17<sup>th</sup> Street (at Jackson Park)
- Stakeholder meetings
- Mailers to 17th Street and nearby
- Emails and SMS to stakeholders
- Public Hearing on 9/1/23



# What We Heard

1. Strong support for protected bike lanes.
2. Concerns about the elimination of parking spaces and impacts to loading zones
3. Support for safer intersection design elements (e.g. protected corners)
4. Desire for safe bikeways for children, beginners, and the elderly
5. Support for adding crosswalks and green paint at specific locations for better safety.





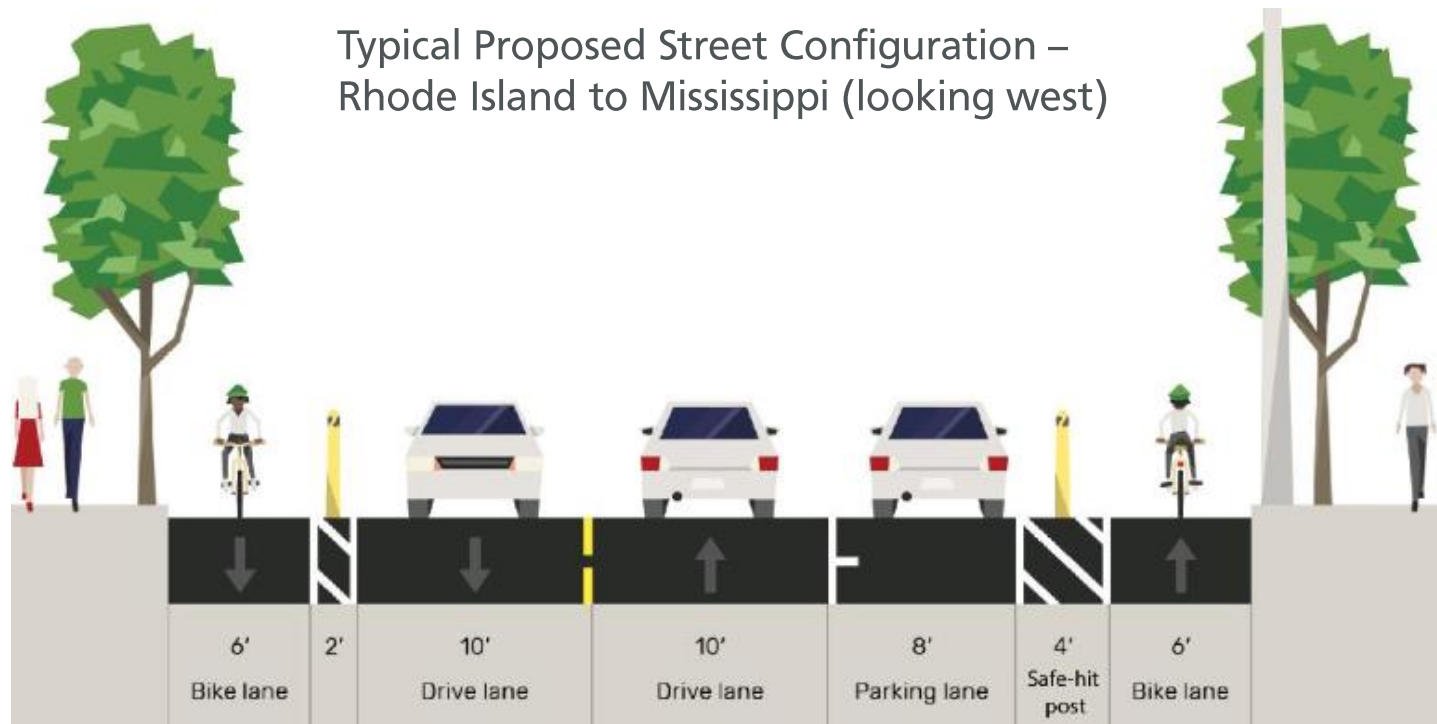
# Recommendation – Upgrade to Separated Bikeway

Typical Proposed Street Configuration –  
Rhode Island to Potrero (looking west)



# Recommendation – Upgrade to Separated Bikeway

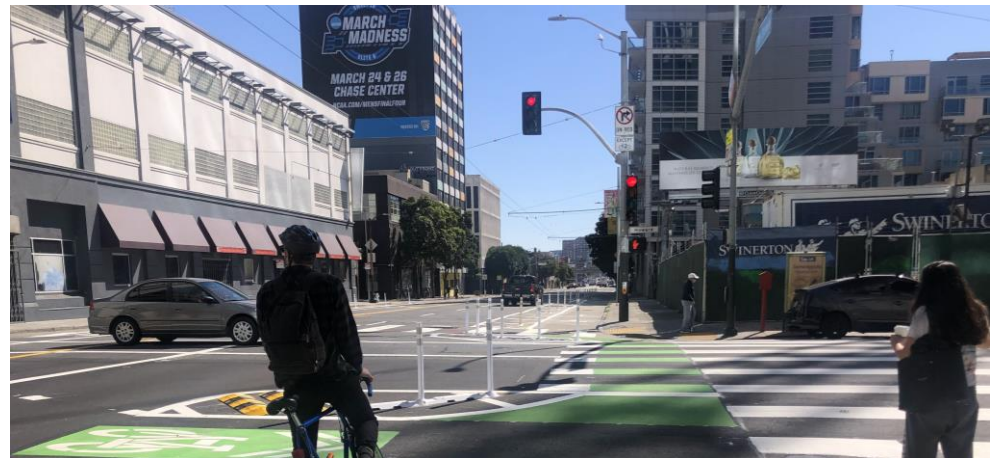
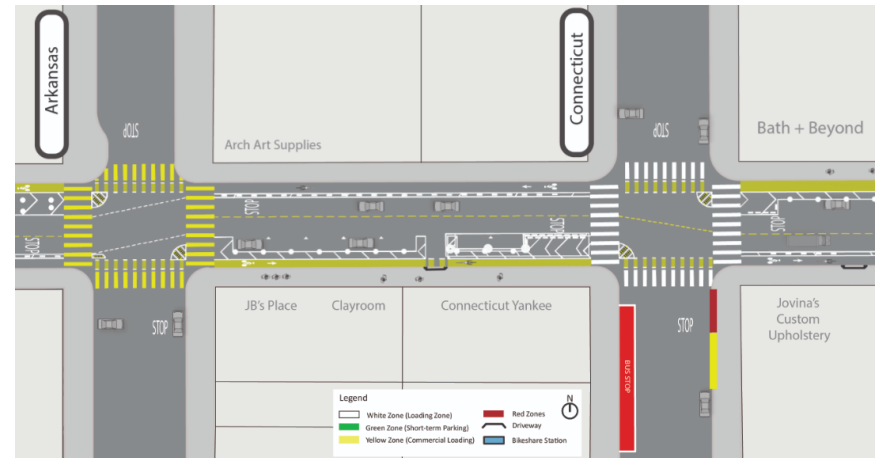
Typical Proposed Street Configuration –  
Rhode Island to Mississippi (looking west)



# Incorporating Feedback Into Design

## Example: Improved Intersection Design

- Painted corner treatments with raised elements
- “Crossbikes” (with green paint) through intersection



# Next Steps

**February 2024:** SFMTA Board consideration (today)

- Approving Class IV separated bikeway on 17<sup>th</sup> Street between Potrero Ave and Mississippi St

**Spring 2024:** If approved, quick-build implementation (weather pending)

**Summer 2024:** Initiate Project Evaluation





**Project Staff:**  
**-Jason Hyde**  
**-Adrian Leung**  
**-Laura Stonehill**  
**-Matt Lasky**  
**-Vince Molina**  
**-Alejo Alvarado**  
**-Alyssa Kawano**