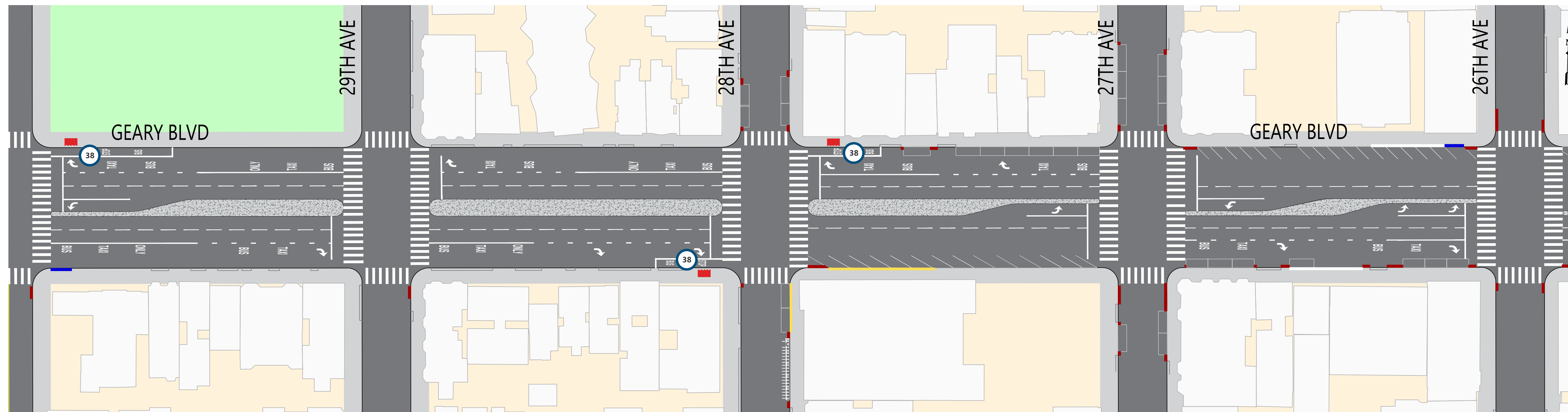
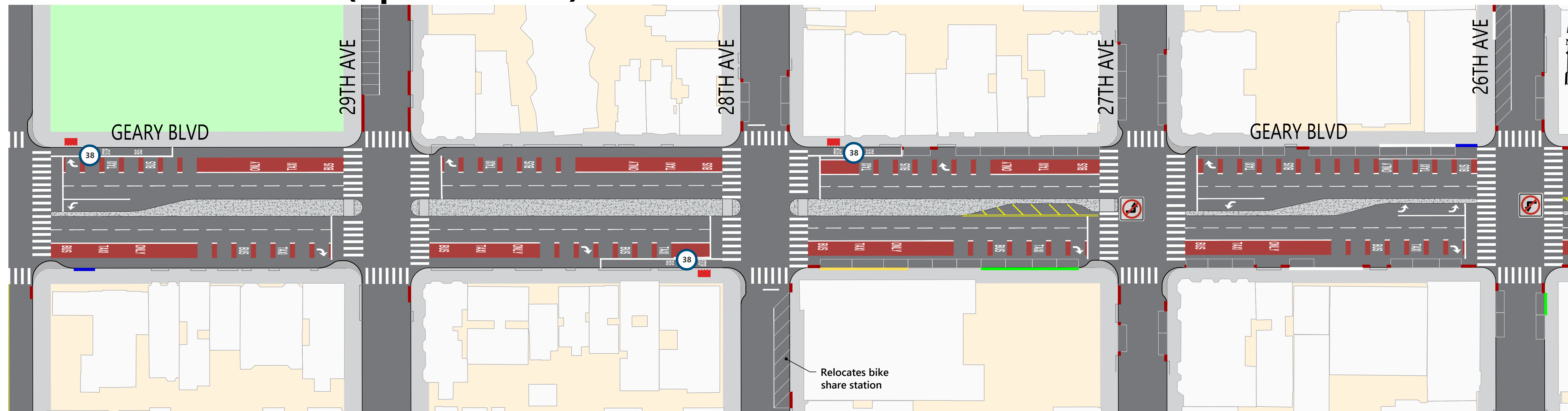


EXISTING CONDITIONS



PROJECT PROPOSALS (Updated 2023)



SUMMARY OF PROPOSALS

- New dedicated red transit-only lanes
- Extension of the 28th Ave local bus zones
- Pedestrian bulbouts at the corners of 30th, 29th, 28th and 27th avenues
- Restriction of the left-turns from eastbound Geary onto 27th Ave and westbound Geary onto 26th Ave
- Updated parking and loading regulations east of 28th Ave based on merchant and survey feedback
- New angled parking on 29th and 26th avenues, north of Geary, and on 28th Avenue, south of Geary
- Traffic safety treatments including expanded median refuges, daylighting and leading pedestrian signals

LEGEND

