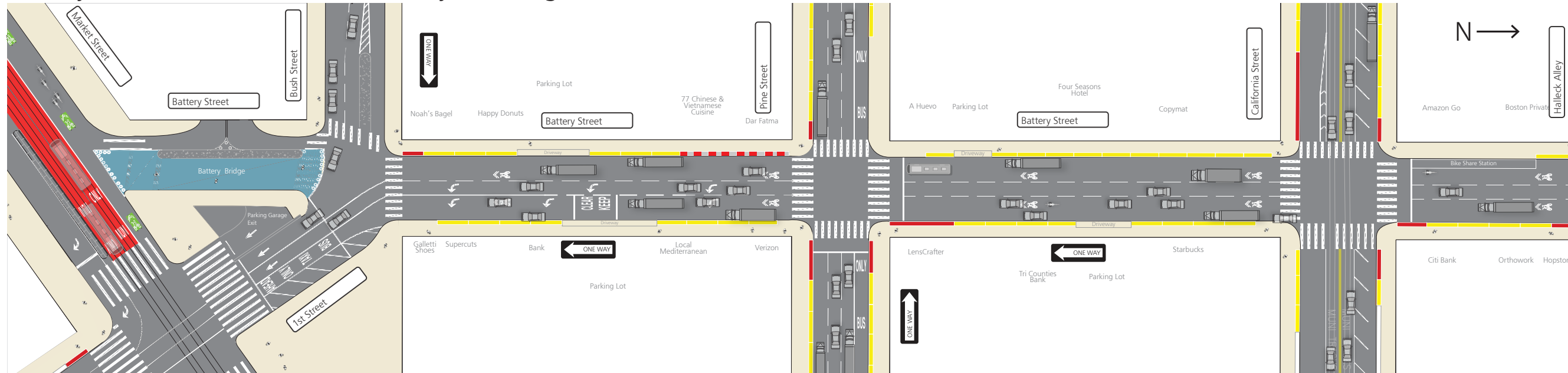


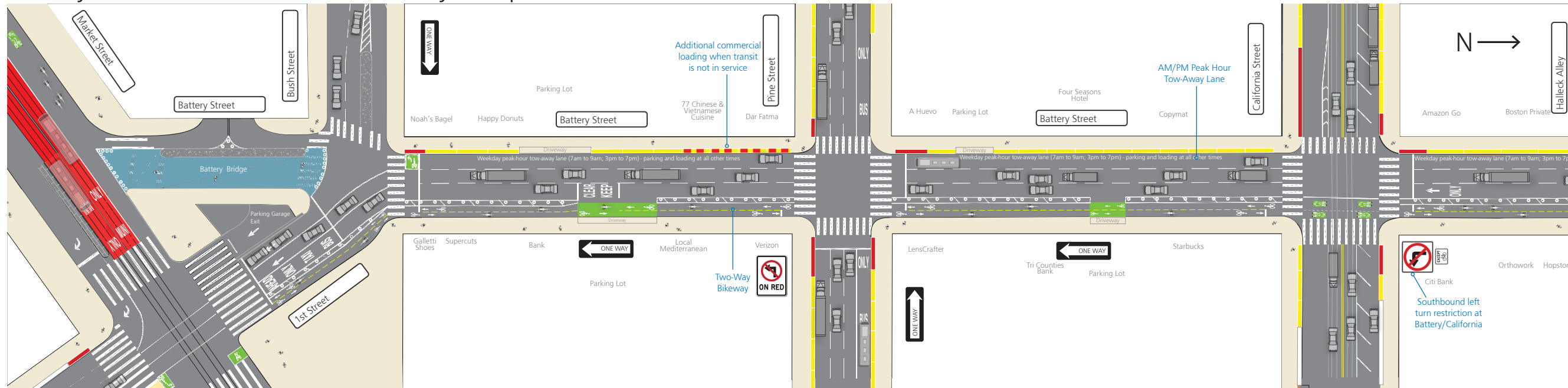
Battery/Sansome Quick-Build Project - Existing and Proposed Design (draft)

For Illustrative Purposes

Battery Street - Market to Halleck Alley - Existing Conditions



Battery Street - Market to Halleck Alley - Proposed Conditions



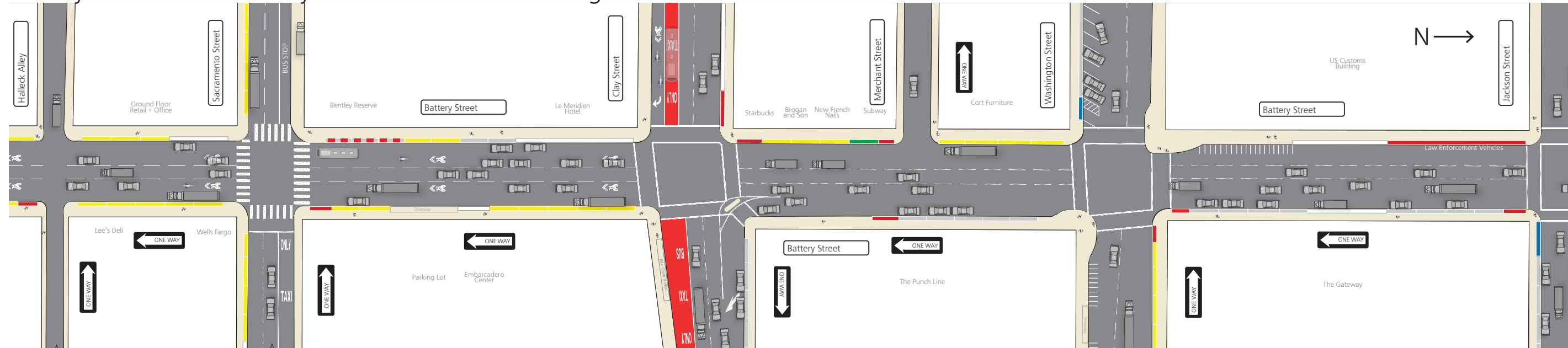
CURB COLORS

- General Meter Parking
- Accessible Parking
 - Parking for people with disabled placards only
- Short-Term Parking
 - Short-term general metered parking
- Passenger Loading
 - 5-minute passenger loading only
 - Driver must be in vehicle
- Commercial Loading
 - 30-minute metered commercial loading
 - Up to 3-minute passenger loading

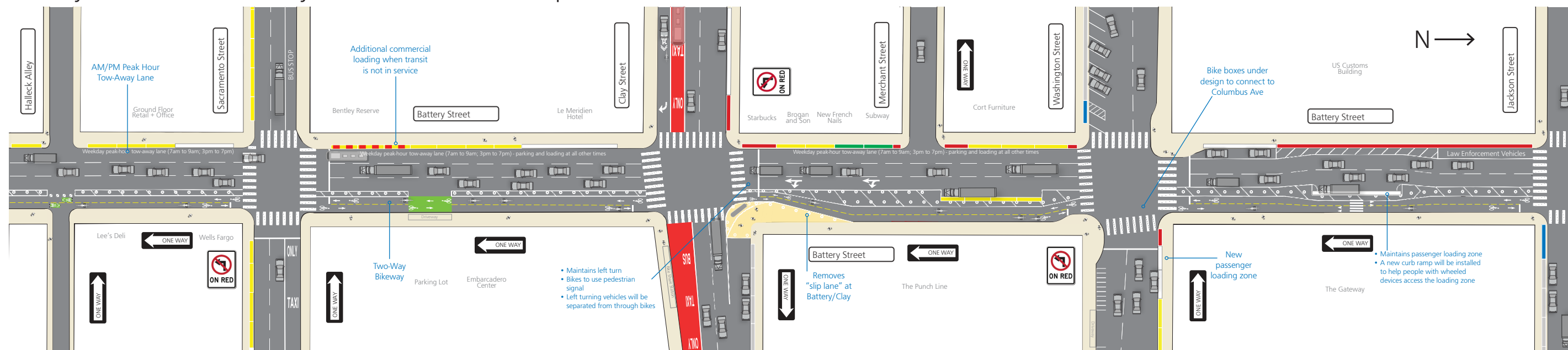
Battery/Sansome Quick-Build Project - Existing and Proposed Design (draft)

For Illustrative Purposes

Battery Street - Halleck Alley to Jackson Street - Existing Conditions



Battery Street - Halleck Alley to Jackson Street - Proposed Conditions



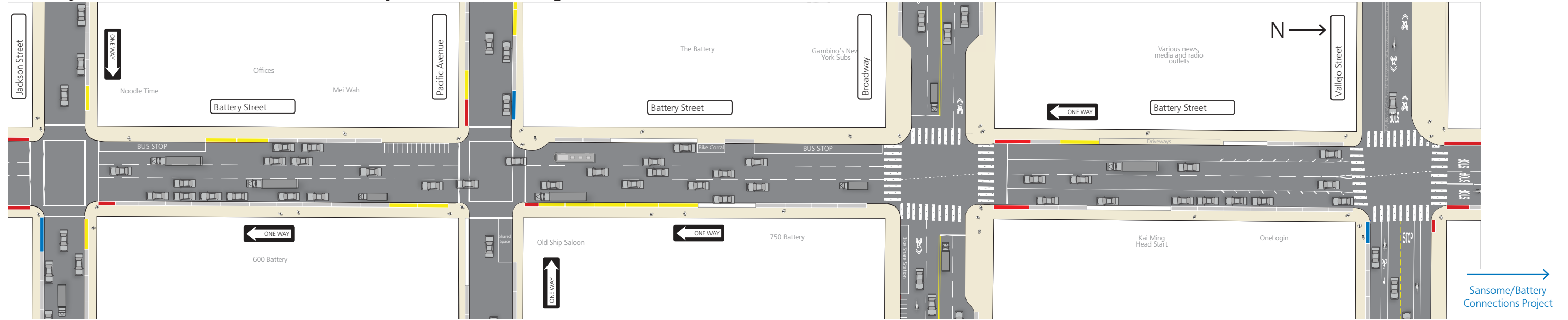
CURB COLORS

- General Meter Parking
- Accessible Parking
 - Parking for people with disabled placards only
- Short-Term Parking
 - Short-term general metered parking
- Passenger Loading
 - 5-minute passenger loading only
 - Driver must be in vehicle
- Commercial Loading
 - 30-minute metered commercial loading
 - Up to 3-minute passenger loading

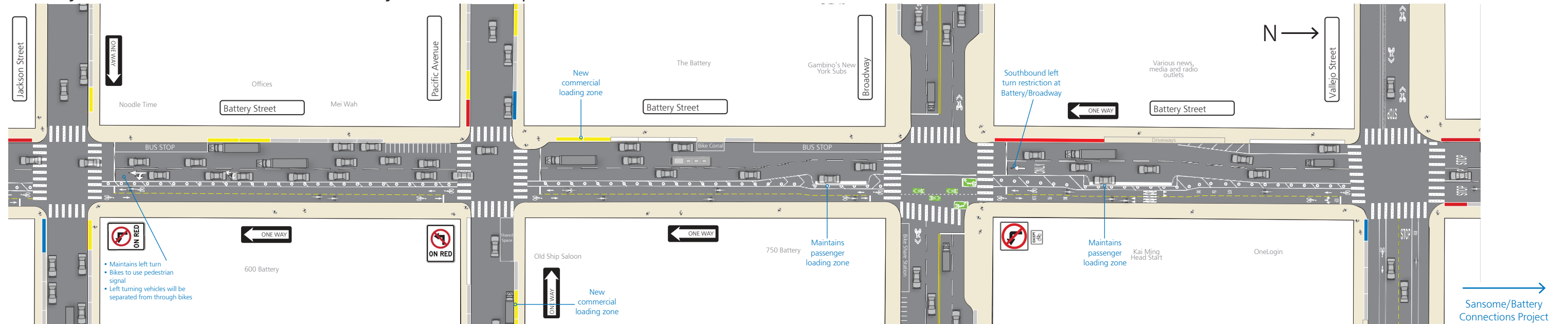
Battery/Sansome Quick-Build Project - Existing and Proposed Design (draft)

For Illustrative Purposes

Battery Street - Jackson Street to Vallejo Street - Existing Conditions



Battery Street - Jackson Street to Vallejo Street - Proposed Conditions



CURB COLORS

- General Meter Parking
- Accessible Parking
 - Parking for people with disabled placards only
- Short-Term Parking
 - Short-term general metered parking
- Passenger Loading
 - 5-minute passenger loading only
 - Driver must be in vehicle
- Commercial Loading
 - 30-minute metered commercial loading
 - Up to 3-minute passenger loading