



SFMTA



# Transit Update

Julie Kirschbaum, Director of Transit  
Sean Kennedy, Senior Manager – Transit Planning  
**SFMTA Board of Directors**  
**April 20, 2021**

# Contents

## **1. Muni Forward Updates**

- Background & Impact
- Muni Forward Construction Updates

## **2. Temporary Emergency Transit Lanes (TETL) Program Status Update**

- Mission SOMA
- Outer Geary
- 7<sup>th</sup> & 8<sup>th</sup> Streets
- 4<sup>th</sup> Street Bridge
- MTAB Look-Ahead

## **4. Next Steps for Muni Forward**

- May Service Restoration
- The Future of Muni Forward

## **5. Transit Performance Update**

# Muni Forward Updates







# Why Muni Forward?



# Congestion Increases Operating Costs

As congestion increases in areas where transit does not have traffic priority measures, transit service becomes slower and more expensive to provide.

## EXAMPLE: Cost to Provide 10-Minute Bus Frequency, 6 AM – 12 AM, daily

	Travel Time (Minutes)	Buses Required	Annual Cost
<i>Travel time and cost increase together</i>	30		\$3.9 million
	45		\$5.9 million
	60		\$7.9 million
	75		\$9.9 million

Assumes operating cost of **\$200 per hour per vehicle**. Actual costs vary by mode.

# The Solution: Muni Forward



- **Improved reliability:** Over **70 miles of new reliability improvements**, such as red transit lanes, bus bulbs and traffic signals that stay green for transit
- **Rapid Network:** More Rapid lines and expanded frequency
- **More service:** Multiple service increases and new connections since 2015
- **Brand new fleet:** All-new bus and rail vehicles
- **Equity:** A focus on improving service in Equity Strategy neighborhoods



# Muni Forward Results

## Rapid Network Ridership Up 14% (2016 to 2018)

- 8 Bayshore corridor +12%
- Mission/Van Ness corridor +9%
- Geary corridor: +8%
- 19<sup>th</sup> Ave corridor: +19%

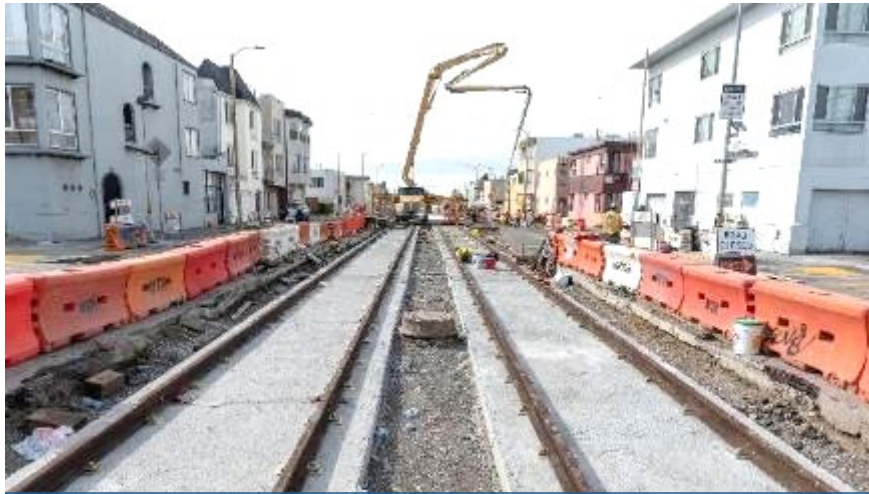
## Time Savings of 10% (or more)

- Church Street: 15%
- 5R Fulton Rapid: 9-12%
- Mission: 13%
- 16th Street quick-build phase: 10%
- Potrero: 20%
- Two-Way Haight: Over 20%
- Sansome: Over 20%

## Economic & Sales Tax Revenue Increases (outperformed city trends)

- Mission Street
- Taraval Street

# Muni Forward Construction: L Taraval



Track Replacement & Street Repaving



ADA Ramps



Boarding Islands



Pedestrian Safety Improvements



# Muni Forward Construction: **22 Fillmore via 16<sup>th</sup>**



**Transit & Taxi Only Lanes**



**Bus Bulbs**



**Boarding Islands**



**Pedestrian Safety Improvements**

# Muni Forward Construction: 28 19<sup>th</sup> Avenue



Bus Bulbs



Pedestrian Safety Improvements



Utility Improvements

# Muni Forward & TETL

- Muni Forward continues to build out transit improvements
- TETL has shown the benefit of rapid quick-build options
- Overlap between Muni Forward corridors and TETL
- **How can Muni come out of the pandemic stronger?**



# Temporary Emergency Transit Lanes



# TETL Program Status Update

- Agency focused on 20 last post pandemic
- Six miles of TETL installed to-date
- Complimenting long term plans for transit improvements



# TETL: Mission/SOMA

- **First TETL Project**
- **Runs from 3<sup>rd</sup> Street through 11<sup>th</sup> Street**
- **Converted part-time transit lanes to full-time**
- **Impact: Transit steady as traffic rises**
  - Jan/Feb 21 traffic 20% higher than summer 2020 levels
  - New lane hours: transit times up 2-4%
- **Public survey results**
  - Outreach included posters, social media advertisements, and digital radio ads
  - 65% supported making changes permanent



# TETL: Outer Geary

- **75% of Geary has transit lanes**
- **Impact: Transit steady as traffic rises**
  - Transit speeds have stayed constant or increased even as VMT has increased
  - Auto speeds caused by VMT, not TETL
  - ~6% reliability improvement in AM peak (7-10 am)
- **Public survey: ongoing**



# TETL: Outer Geary Temporary Bus Bulbs



Temporary wooden bus bulbs (20<sup>th</sup> Avenue, inbound)



# TETL: Outer Geary + Queue Jump (video)

Video

<https://youtu.be/G4mCsBKzD-4>

# TETL: 7<sup>th</sup> & 8<sup>th</sup> Streets

- **8<sup>th</sup> Street segment installed October 2020**
- **Impact: Transit improving even as traffic rises**
  - Traffic volume on 8th increased 35% since April 2020
  - 19 Polk saw a 20% improvement in on-time performance
  - No recorded instances of crowding on the 19 Polk line, despite a **33% increase in ridership** since the beginning of the pandemic
  - No increase in LOS compared to pre-pandemic



# TETL: 7<sup>th</sup> & 8<sup>th</sup> Streets (video)

Video

<https://www.youtube.com/watch?v=4gbnid3JA5A>

# TETL: 4<sup>th</sup> Street Bridge

- **Impact: Transit steady as traffic rises**
  - Transit delay down over 60 percent
  - Trains 2.5X more likely to cross 4th & Berry without stopping for red light
  - Average wait for green light: 70% shorter
  - T Third delays on 4<sup>th</sup> Street bridge: under 1%





# MTAB Look-Ahead

## Final TETL Approvals

- April 20: 1 California (today!)
- HOV pilot on CalTrans ROW

## Permanent legislation of TETLs

- Downtown Mission
- 4th Street Bridge
- Geary
- 7th/8th Street
- Church & Market subway transfer locations

# Next Steps for Muni Forward



# May Service Restoration

## **Metro**

- Open all subway stations from Embarcadero to West Portal
- Restart N Judah rail from Ocean Beach to Caltrain

## **Bus**

- Increase frequency for crowding management
- Close hilltop gap between Forest Hill and Glen Park

## **Historic**

- Restore F Line service 7 days a week (11AM-7PM)
- Better Market Street construction starts fall 2021

# The Future of Muni Forward



## The Next Five Years

- Make (most) TETL projects permanent
- Complete outreach on remaining Rapid corridors
- Implement Delay Hot Spot program to complement corridor-based approach
- Operationalize the Equity Strategy
- Launch Rapid service on more lines
- Begin transformation of Muni Metro into a true Metro system, including 3-car trains

## The Rapid Network Vision

- Achieve vision of Rapid Network service that travels between stops with no needless delay
- Rapid service should provide a “surface subway” experience to **cross San Francisco with ease**



# Future Corridors

**The vision:**  
transit traveling  
between stops  
without delay  
on these  
frequent  
service  
corridors

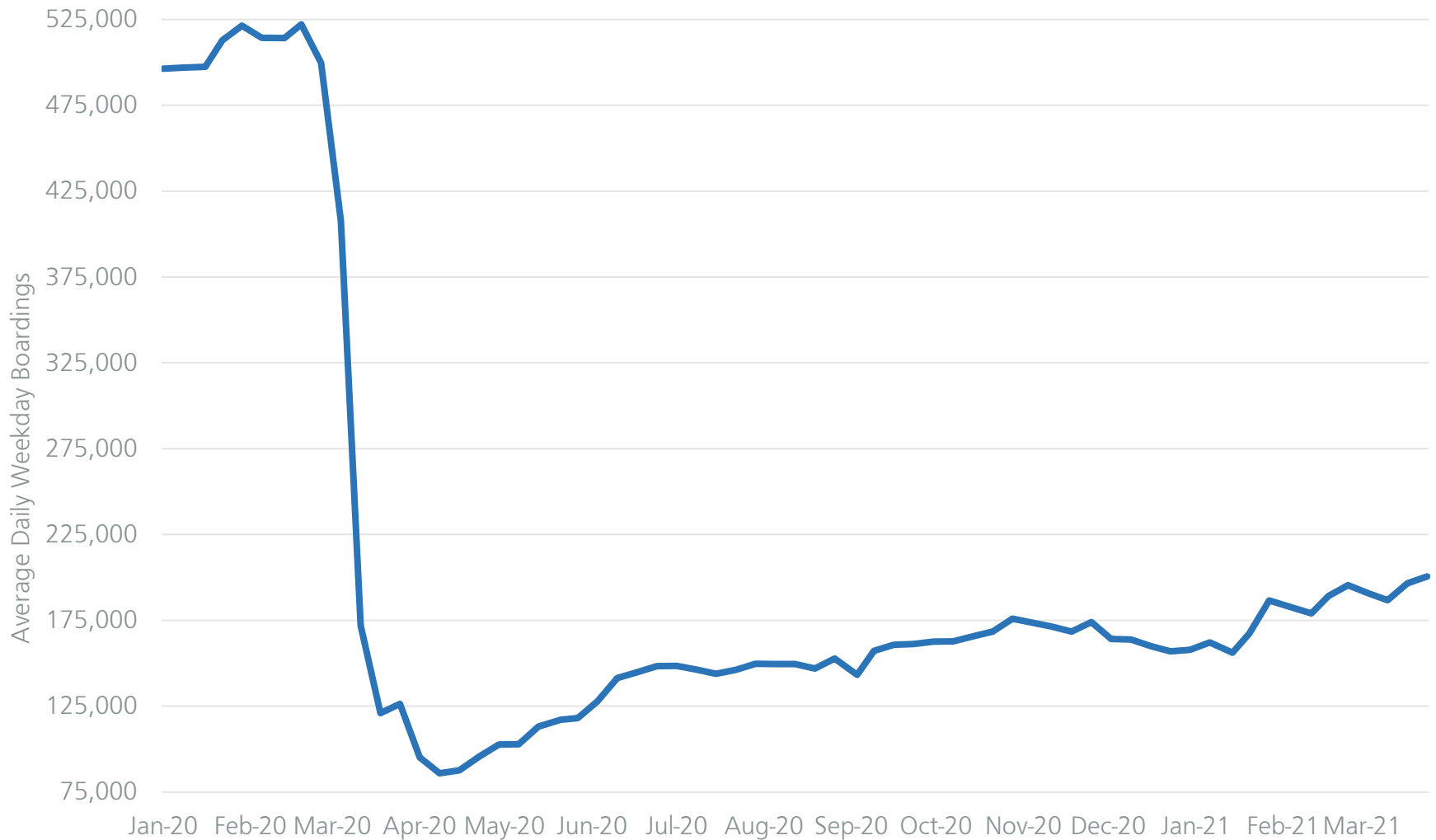


# Transit Update



# Ridership

## Major ridership drop off at pandemic's start



# Ridership

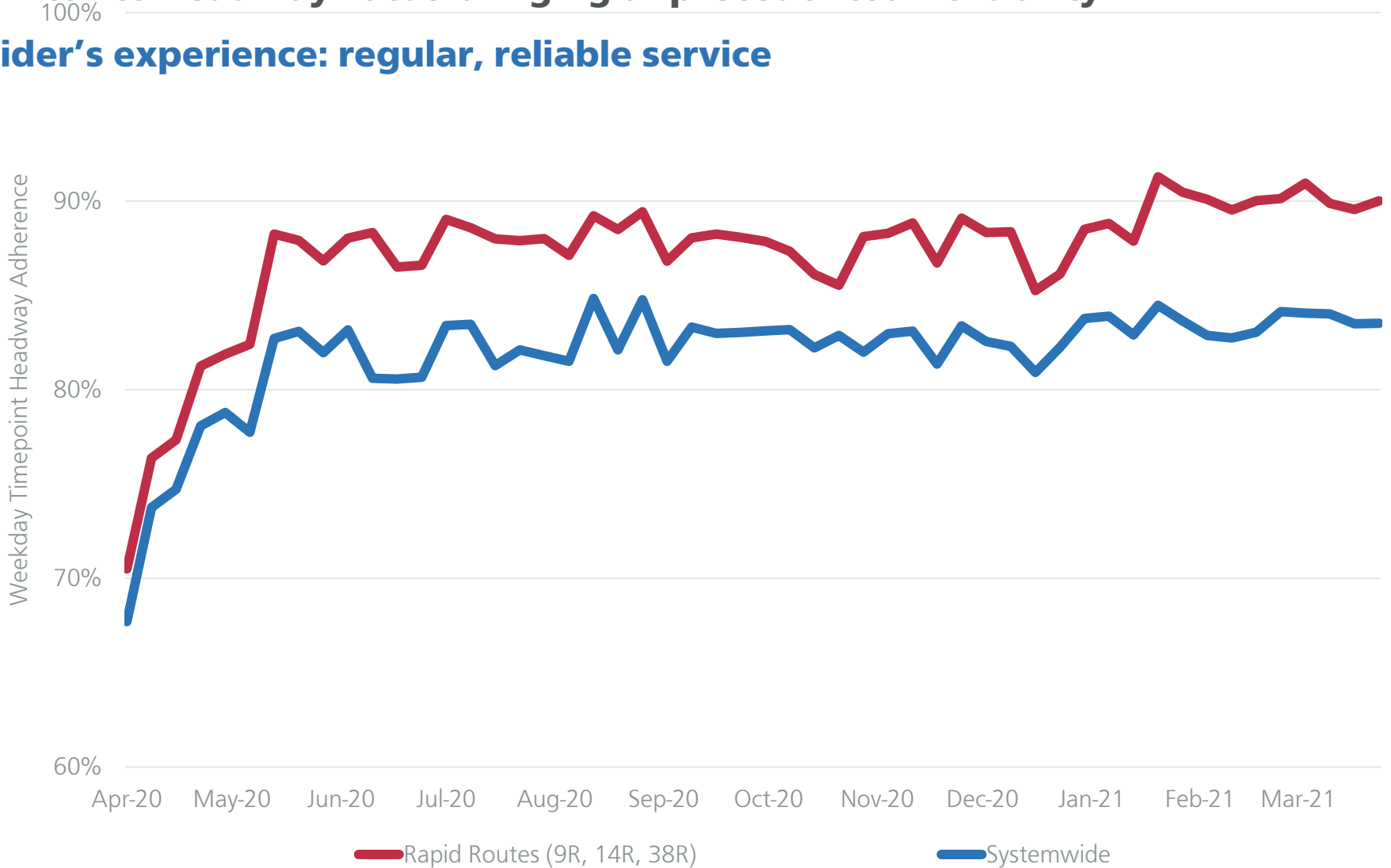
Ridership is steadily growing, more than doubling since April 2020



# Headway Adherence

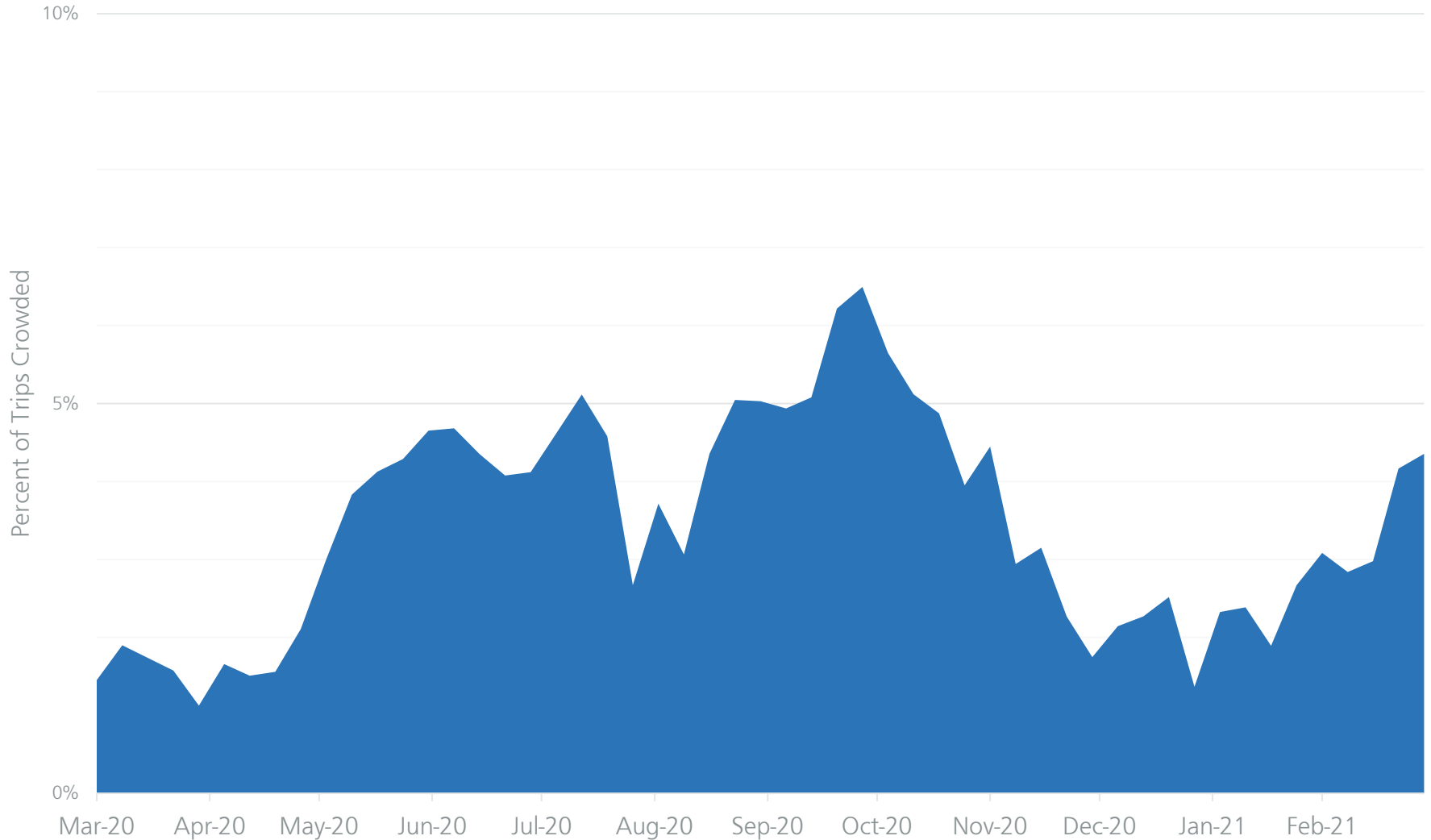
Switch to headway focus bringing unprecedented reliability

Rider's experience: regular, reliable service



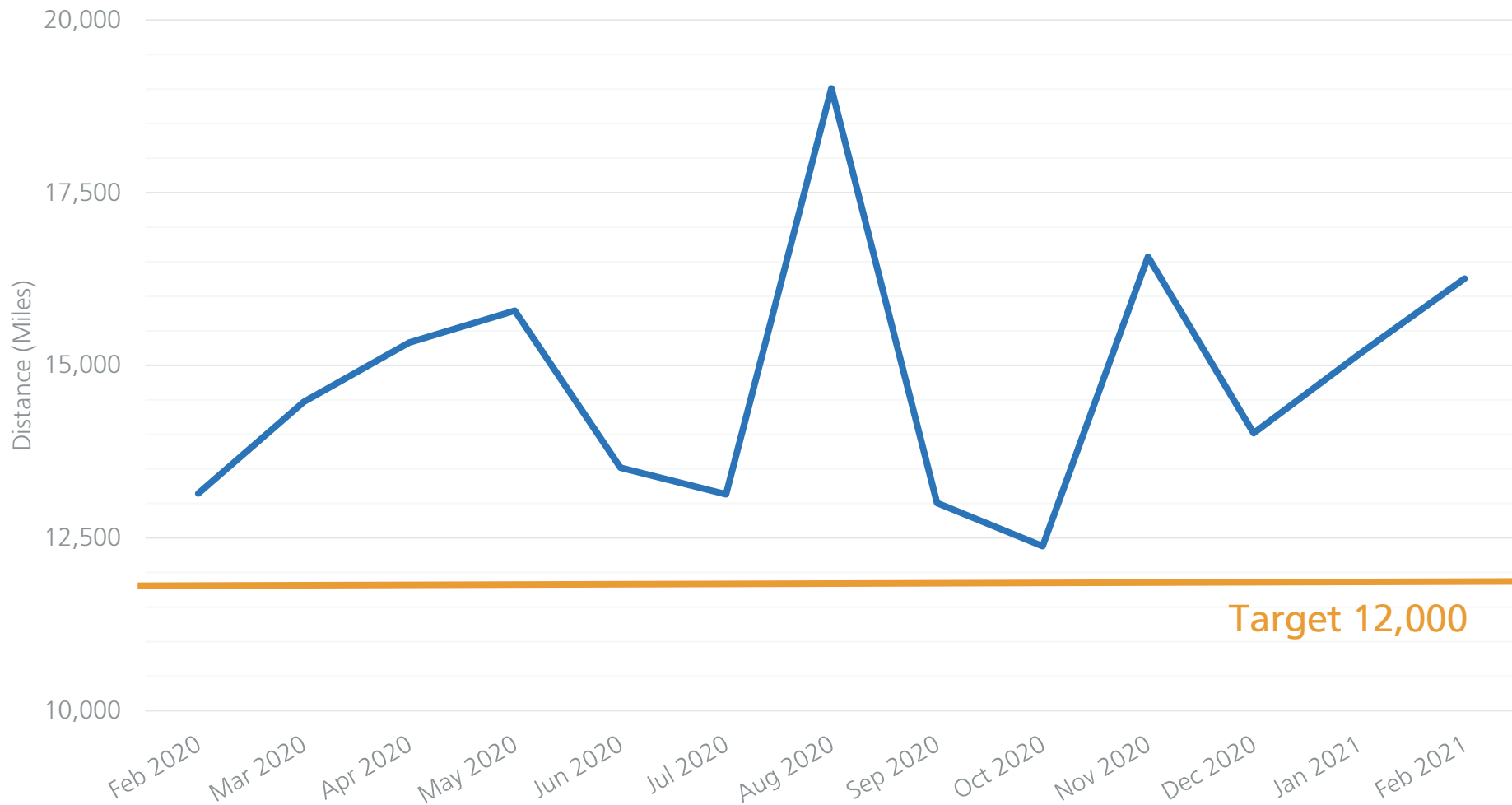
# Crowding

## Crowding increases with each reopening phase



# Mean Distance Between Failures (buses)

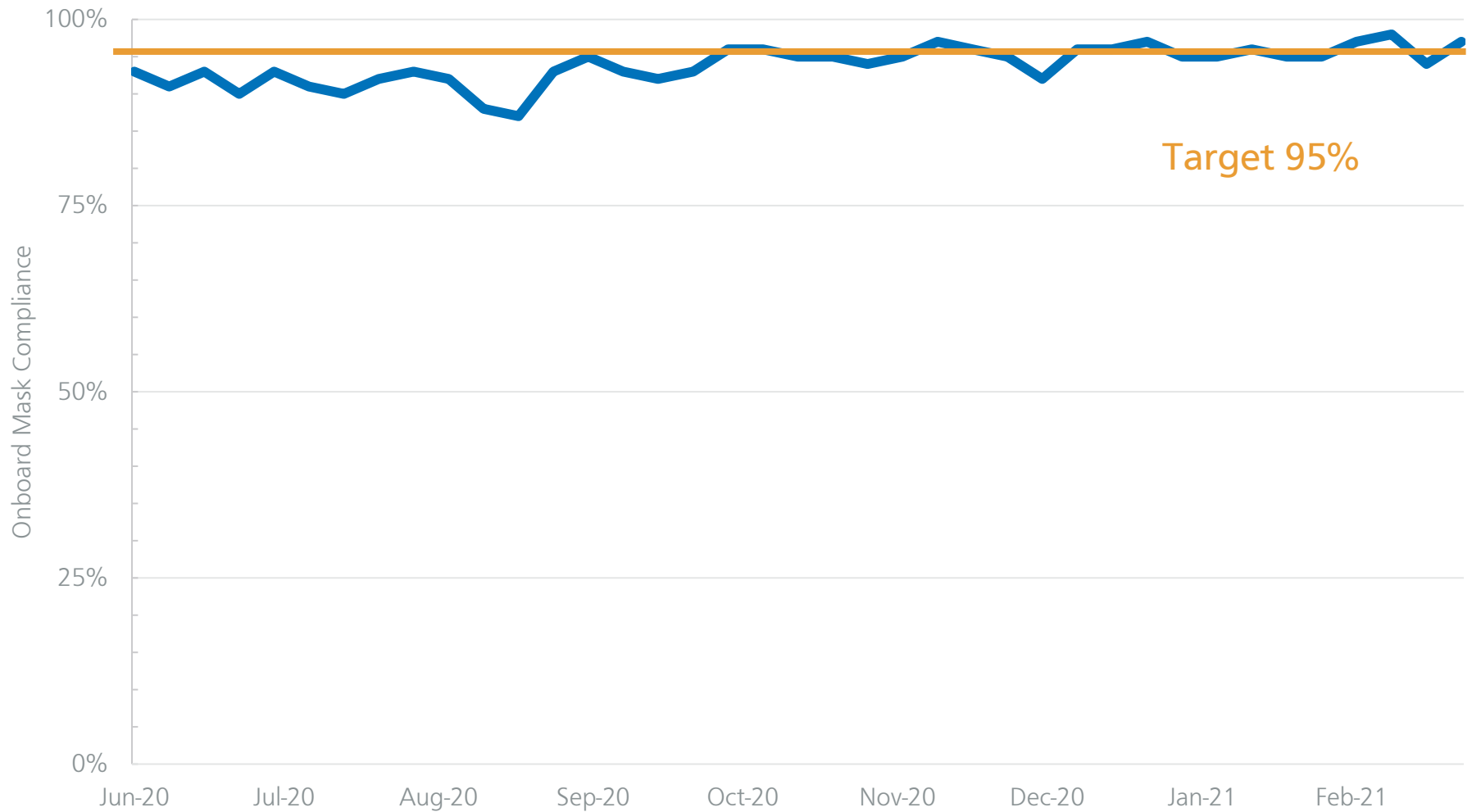
Maintenance team is exceeding targets



Target 12,000

# Mask Compliance

Steady adherence to compliance targets





# Thank You!

