

Greening | CORRIDOR-WIDE STREETScape OPPORTUNITIES



EXISTING TREE MAINTENANCE



Prune Existing Trees



Remove Tree Grates & Develop New Tree Well Design

Remove existing tree grates where they are negatively impacting overall tree health



INFILL STREET TREES



The Value of Planting & Protecting Urban Trees

A mature tree in an urban area provides up to \$162,000 in ecosystem services

- Trees absorb carbon dioxide (up to 25 lbs of CO₂ per year)
- Trees produce oxygen
- Trees reduce up to 60% of particulate pollution in the air
- Trees provide erosion control and act as flood control agents
- Trees provide habitat for birds and beneficial insects
- People are more likely to shop on streets that are planted with trees
- Clean & green settings experience less crimes such as vandalism, graffiti, & litter
- Trees act as traffic calming agents (drivers perceive the streets as more narrow)



MEDIAN PLANTING



Existing Median
Highlighting area of planting opportunity



STYLE 1: Raised Planters within Medians
Restoration of Existing Irrigation System



STYLE 2: At-Grade Understory Planting at Medians between Palms
Restoration of Existing Irrigation System



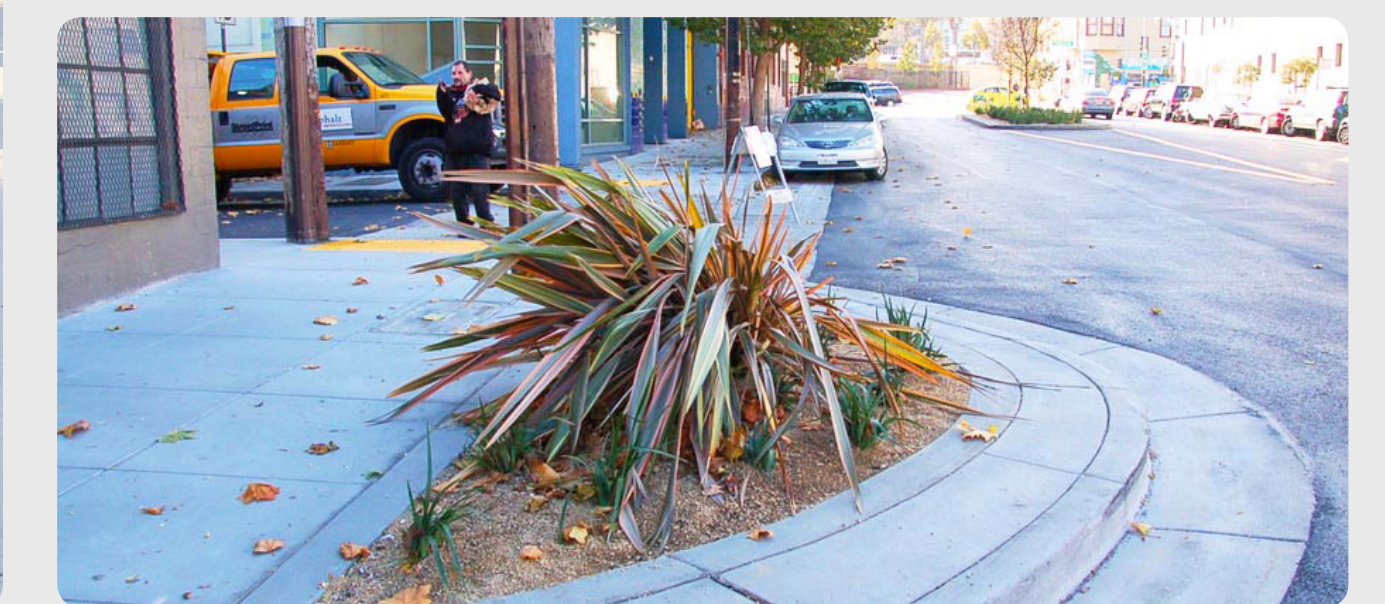
SIDEWALK PLANTING



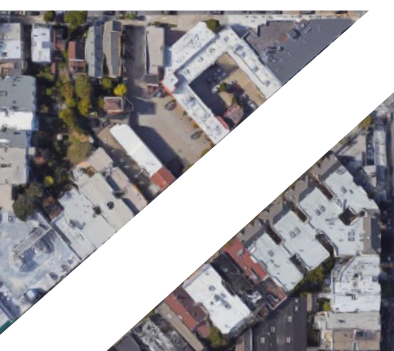
Sidewalk Planting at Tree Wells



Custom Planter Guards



Sidewalk Planting at Bulb-outs

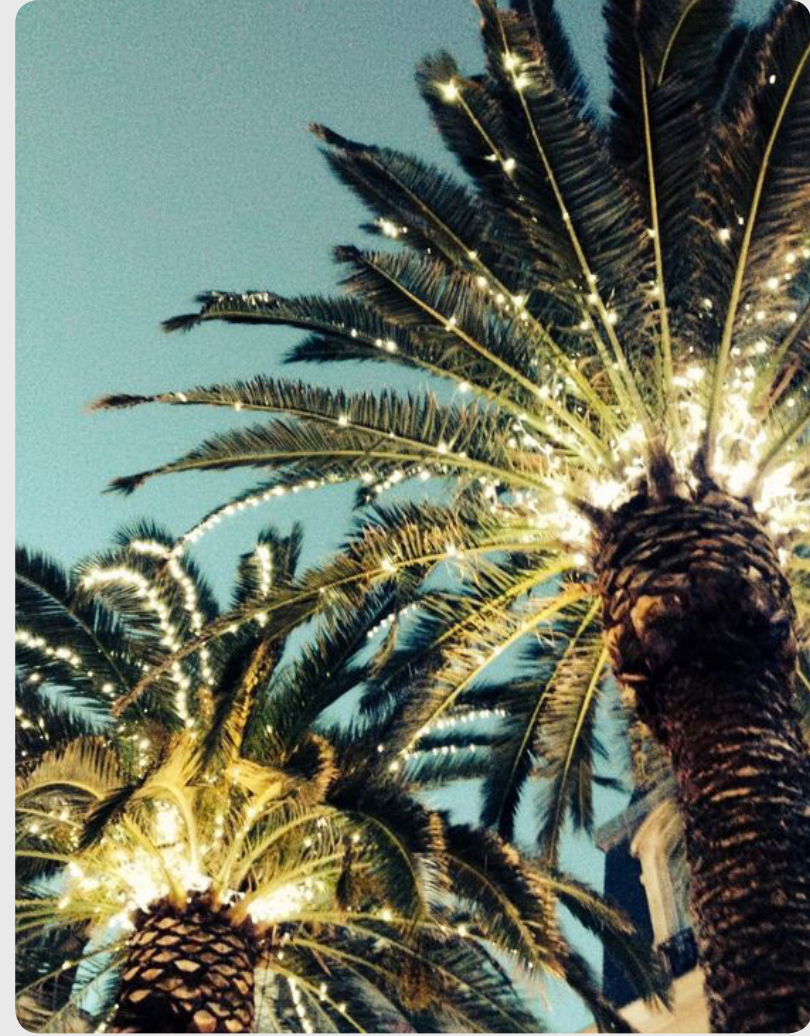


Lighting

CORRIDOR-WIDE STREETScape OPPORTUNITIES



SEASONAL LIGHTING



Decorative Lighting
On Median Palm Trees



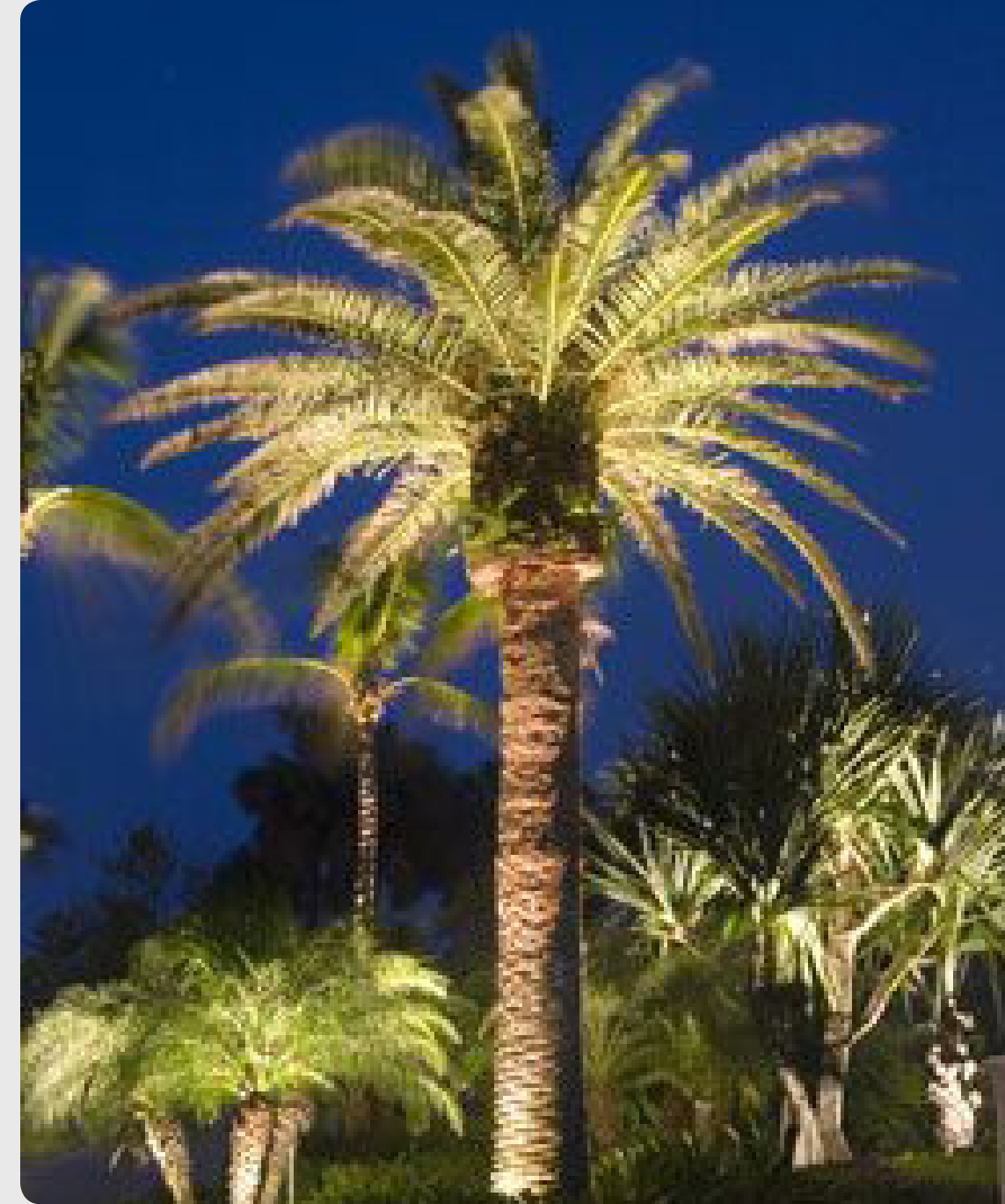
Above: Seasonal Tree Lighting installed on Market Street in Winter (2017)



More Temporary Seasonal Lighting Identity
Above: Seasonal Snowflakes on Market Street in Winter



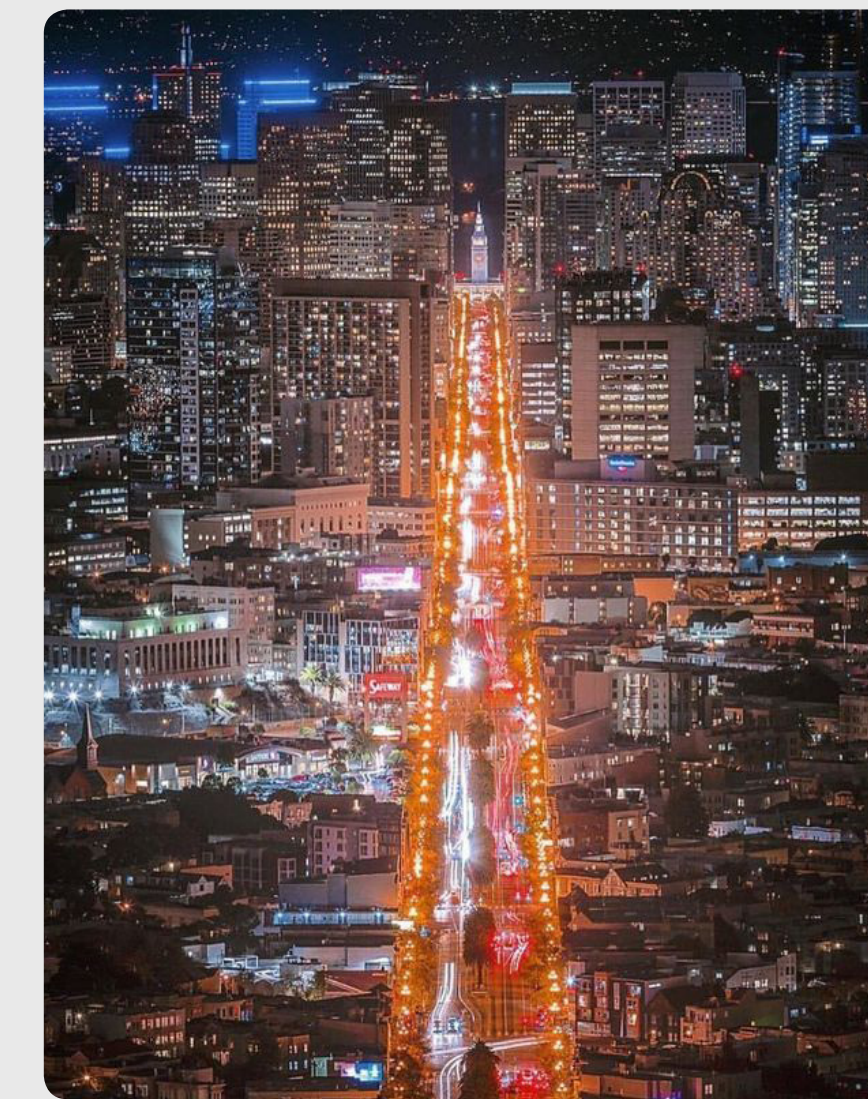
UPLIGHTING



Uplighting at Existing Median Palms
Increased ambiance and evening aesthetics



'PATH OF GOLD' RESTORATION



Market Street "Path of Gold"
View from Twin Peaks



Restore "Path of Gold" Light Fixtures
LED conversion & powdercoat touch-up

Materials + Site Furnishings

CORRIDOR-WIDE STREETScape OPPORTUNITIES

SPECIAL PAVING

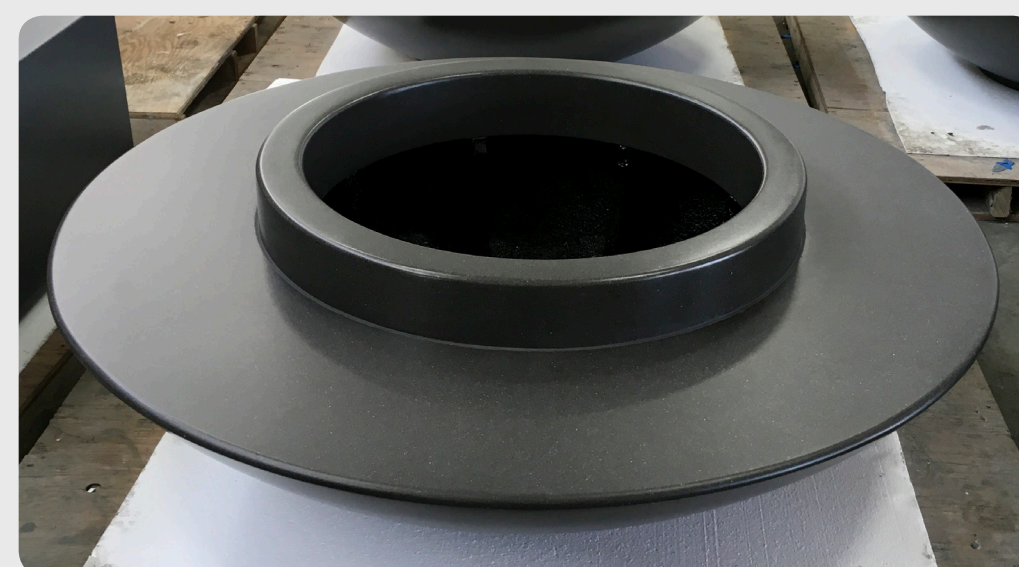
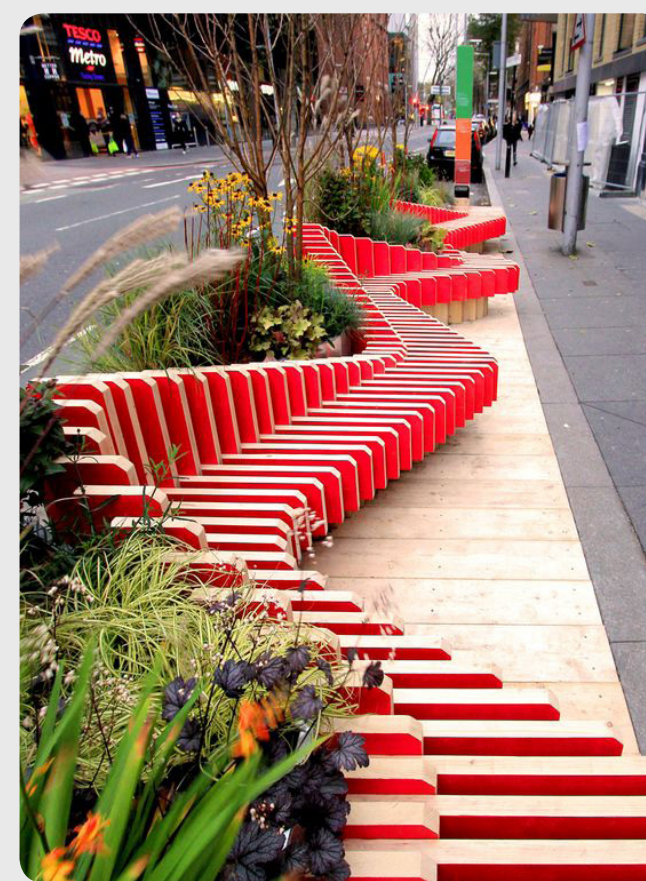


Historic Brick Band



Special Paving Opportunities at New Bulb Outs
Materials could include concrete unit pavers, brick pavers, or a custom pattern sidewalk etching

CUSTOM SEATING



Examples of Custom Seating Opportunities

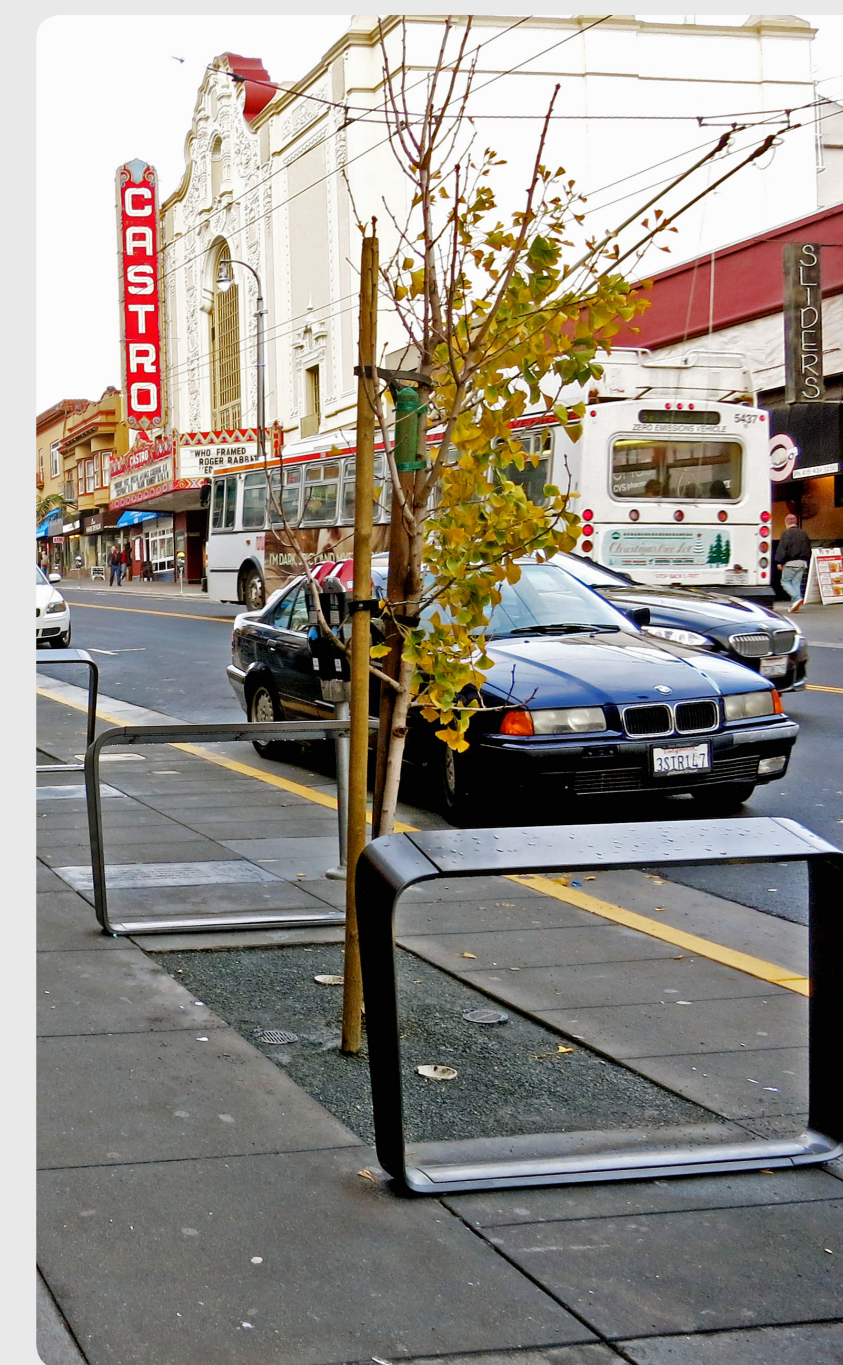
BICYCLE AMENITIES



Copenhagen Style Foot Rests
A simple yet creative bicycle amenity for riders waiting at an intersection



OTHER SITE FURNISHINGS



Leaning Rails



Newsrack Consolidation



New Bike Racks
At Requested Locations



Trash Receptacles

Identity + Placemaking

CORRIDOR-WIDE STREETScape OPPORTUNITIES

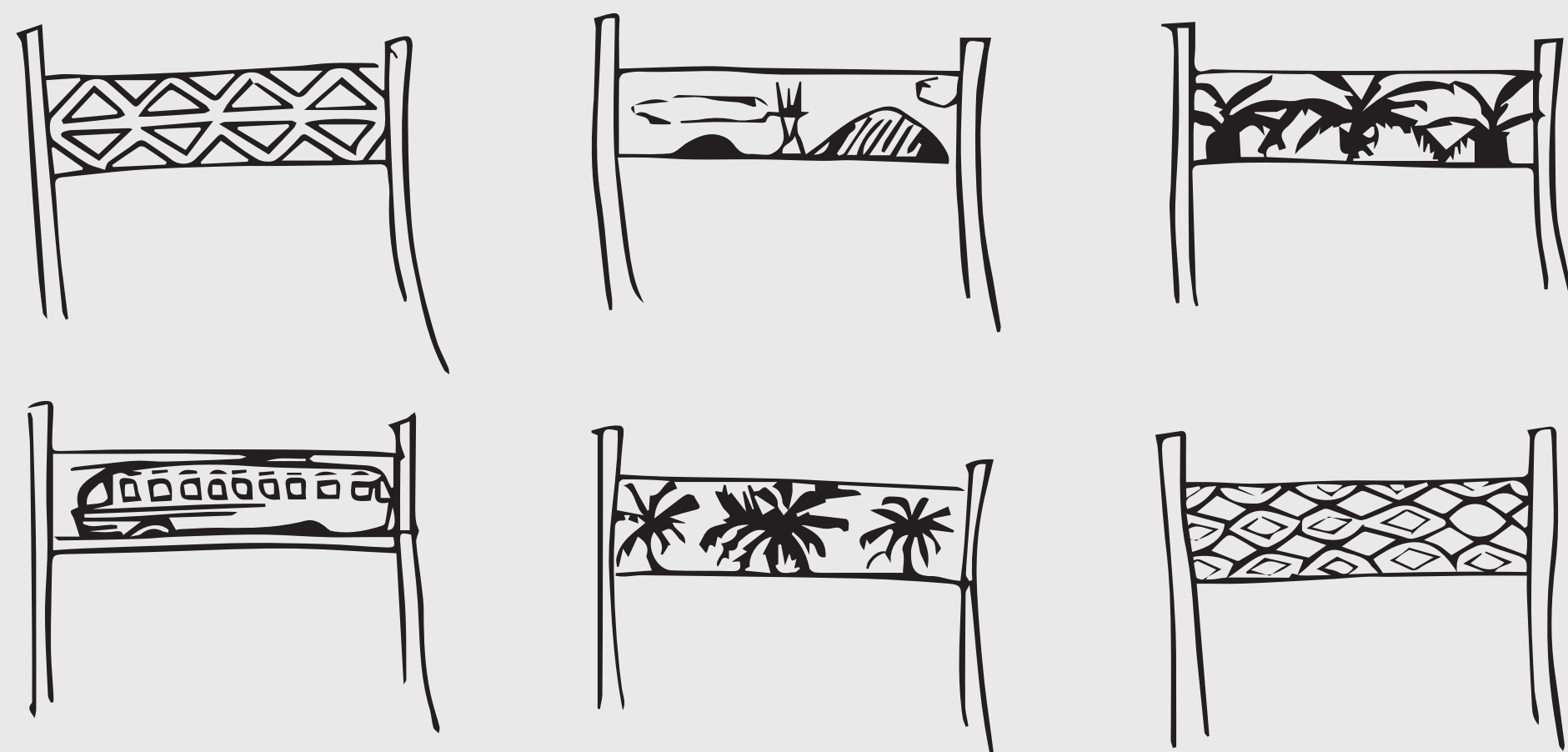
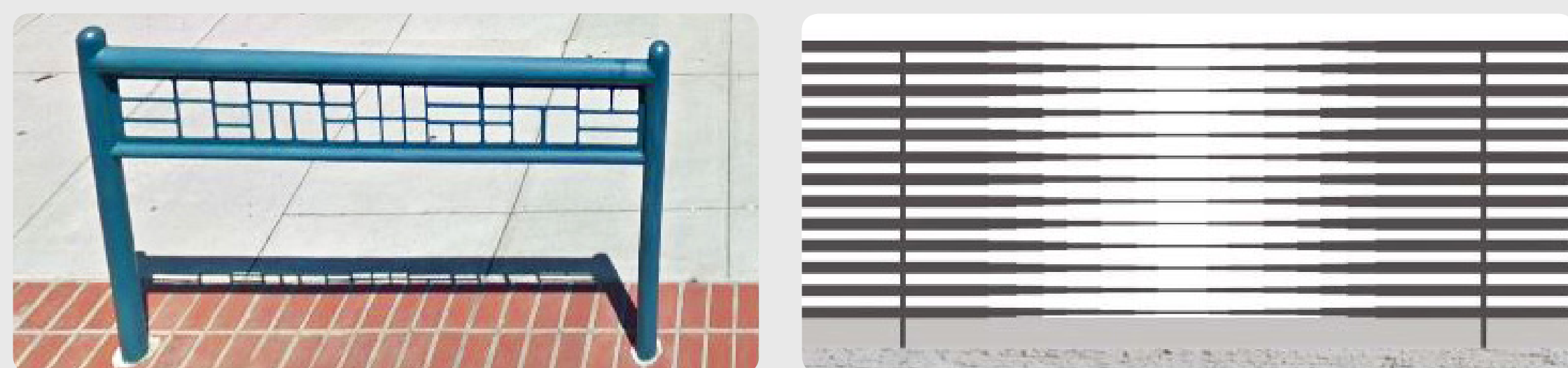
WAYFINDING



Pedestrian Oriented Wayfinding

Above: Temporary wayfinding signage installed on Market Street

DISTRICT IDENTITY



Custom Muni Railings at Existing Boarding Islands and Key Stops

Above: Custom Railings at Duboce & Noe (constructed) & at Van Ness Ave BRT Project (currently in construction)

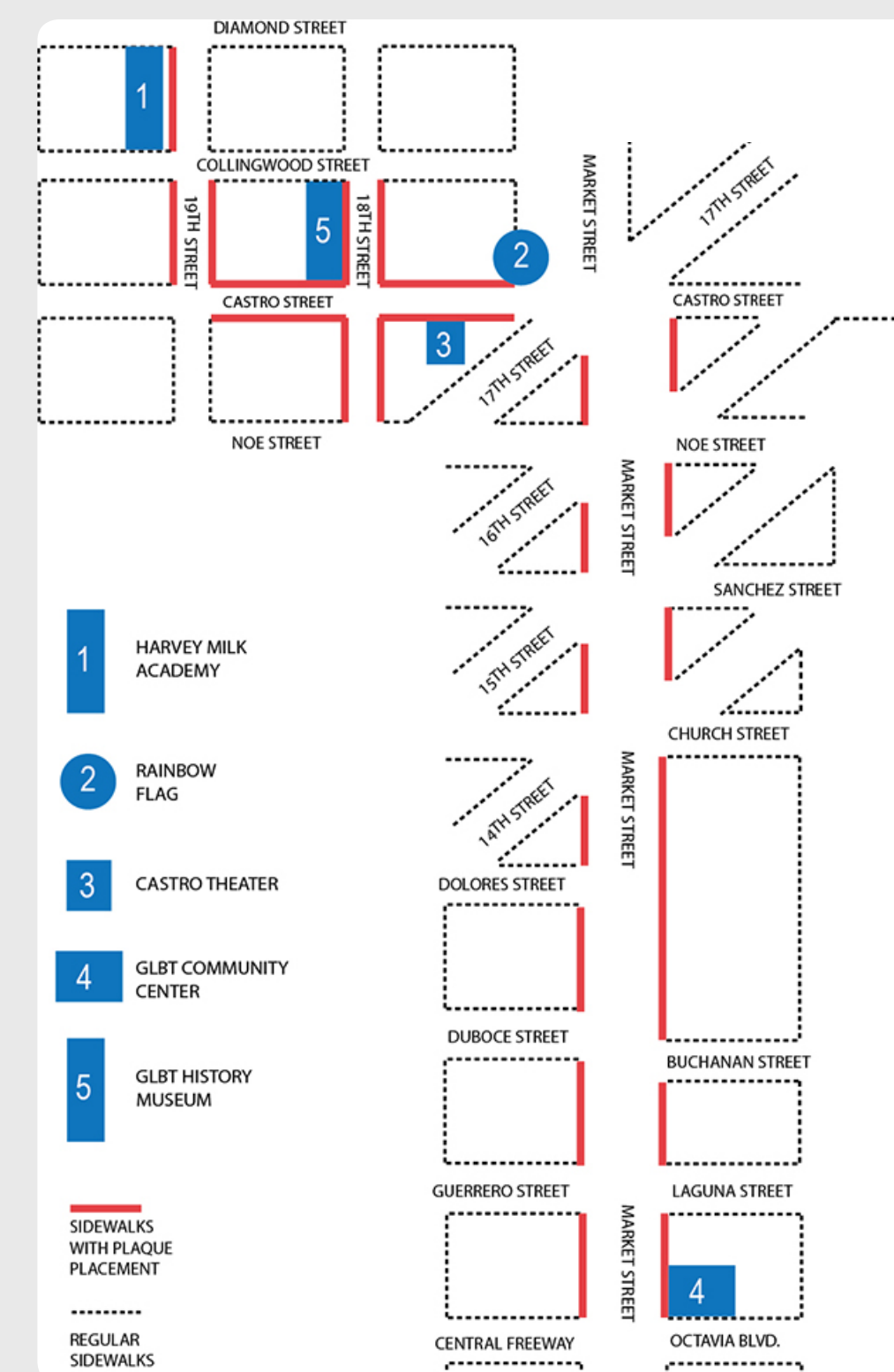
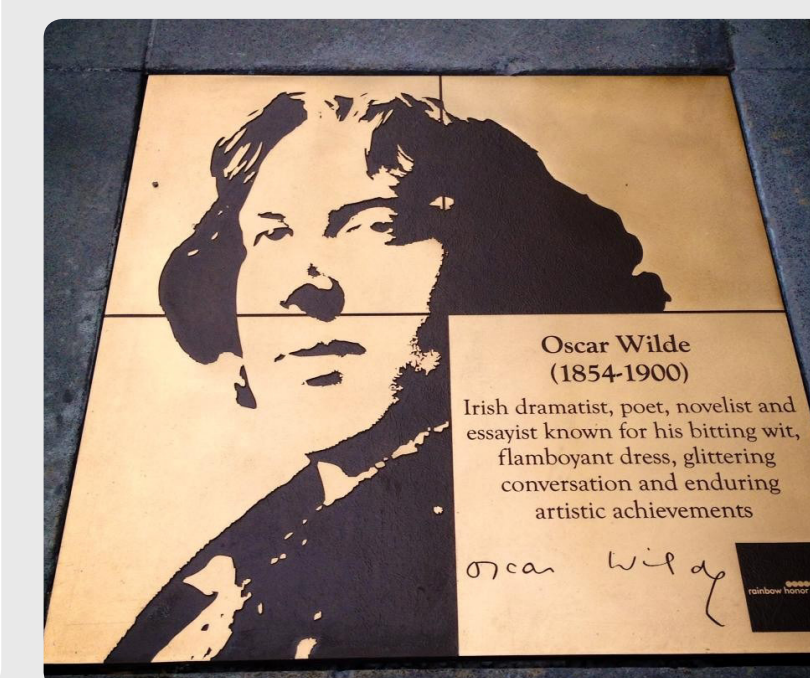
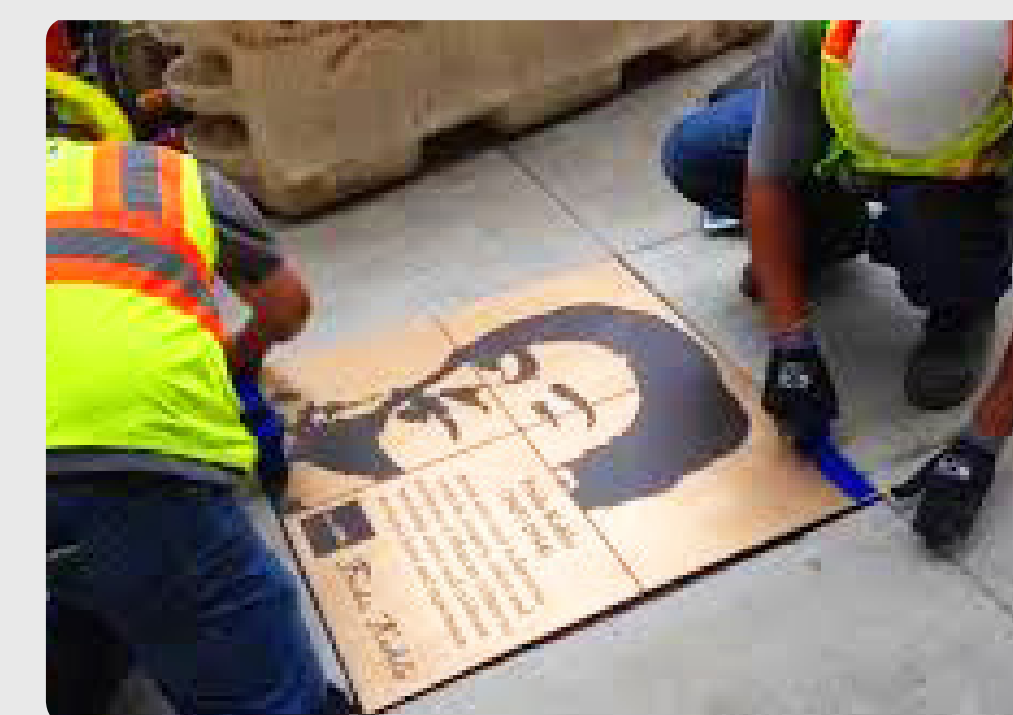
IDENTITY BANNERS & FLAGS



Expansion of Holiday Banners & Flags

For added neighborhood identity

RAINBOW HONOR WALK



Expansion & Installation of Commemorative Plaques

Provide support for installation of the planned Rainbow Honor Walk extension down Market Street. These 3' x 3' plaques would be located in the path of travel of the sidewalk.

Site Specific Opportunities

PLANTING AT KEY STOPS



Understory Planting at Key Stops
 In lieu of crash barriers, planting islands can provide added greening to the corridor. With a maintenance partner, these planters could be replanted with a palette of low-maintenance and low-water use plants

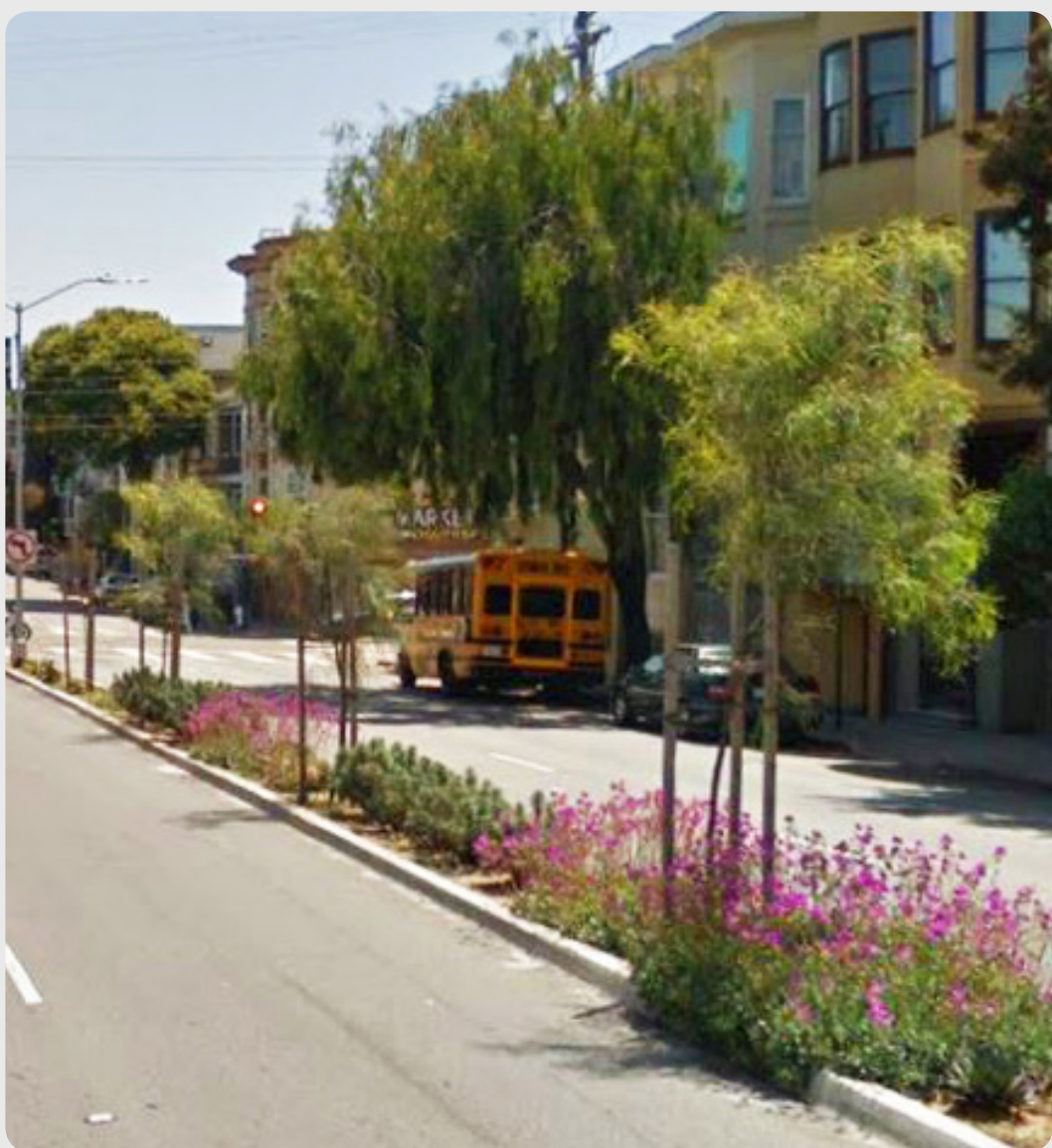


Median Plant Palette
 Criteria for the plant palette used in medians would be drought tolerant, low-water use, low maintenance and maintain sight lines

MEDIAN PLANTING DOWN GUERRERO



Understory Planting at Median
 Under the proposed project, the median along Guerrero from Market to Duboce would be extended and planted to match the other planted medians along Guerrero



Median Planting
 Above: Guerrero St. Median Planting



Median Planting
 Above: Divisadero St. Median Planting

GREEN INFRASTRUCTURE AT NEW BULBS



Green Infrastructure at Bulb-outs
 Further analysis is required to determine feasibility and potential locations

Site Specific Opportunities



GATEWAY OPPORTUNITIES

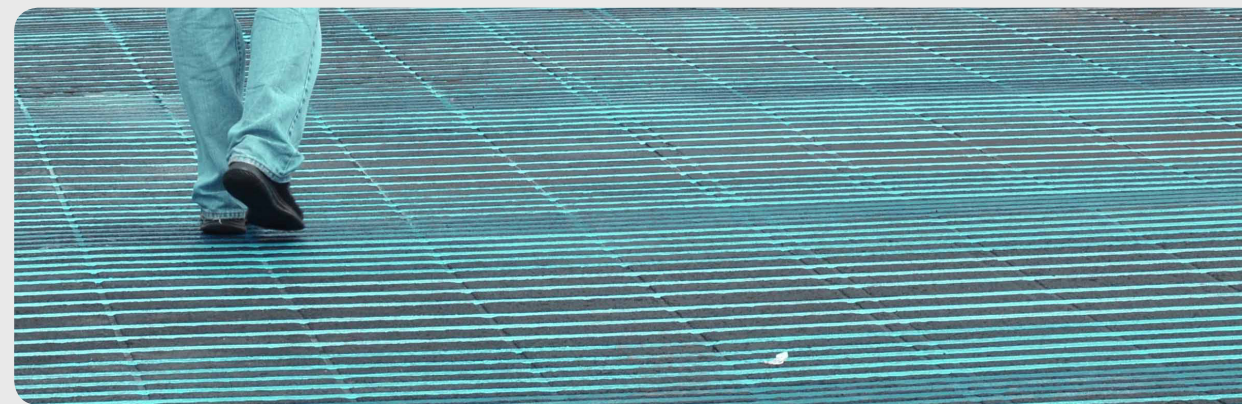


Gateway Opportunities at Select Plaza Locations

Rotating Art provides an opportunity for added identity, wayfinding, and neighborhood interest



SPECIAL CROSSWALK TREATMENT



Special Crosswalk Treatment

At key locations, special crosswalk treatment can provide unique visual interest, enhance intersection visibility, and provide a pedestrian link within the urban realm. Note: Images are for representation purposes and not to be taken literally. Exact design would need to comply with SFMTA review & SF Public Works Standards.



'PIT STOP' AMENITIES



Regular Pit Stop Presence at Key Locations along Upper Market Street

With an increased concerns and need for facilities, Pit Stops are a successful model to help make neighborhoods more livable for all. The Pit Stop Program is staffed, maintained, and operated by SF Public Works.

