



SFMTA

December 6, 2024 Engineering Public Hearing

sfmta.com/enghearing

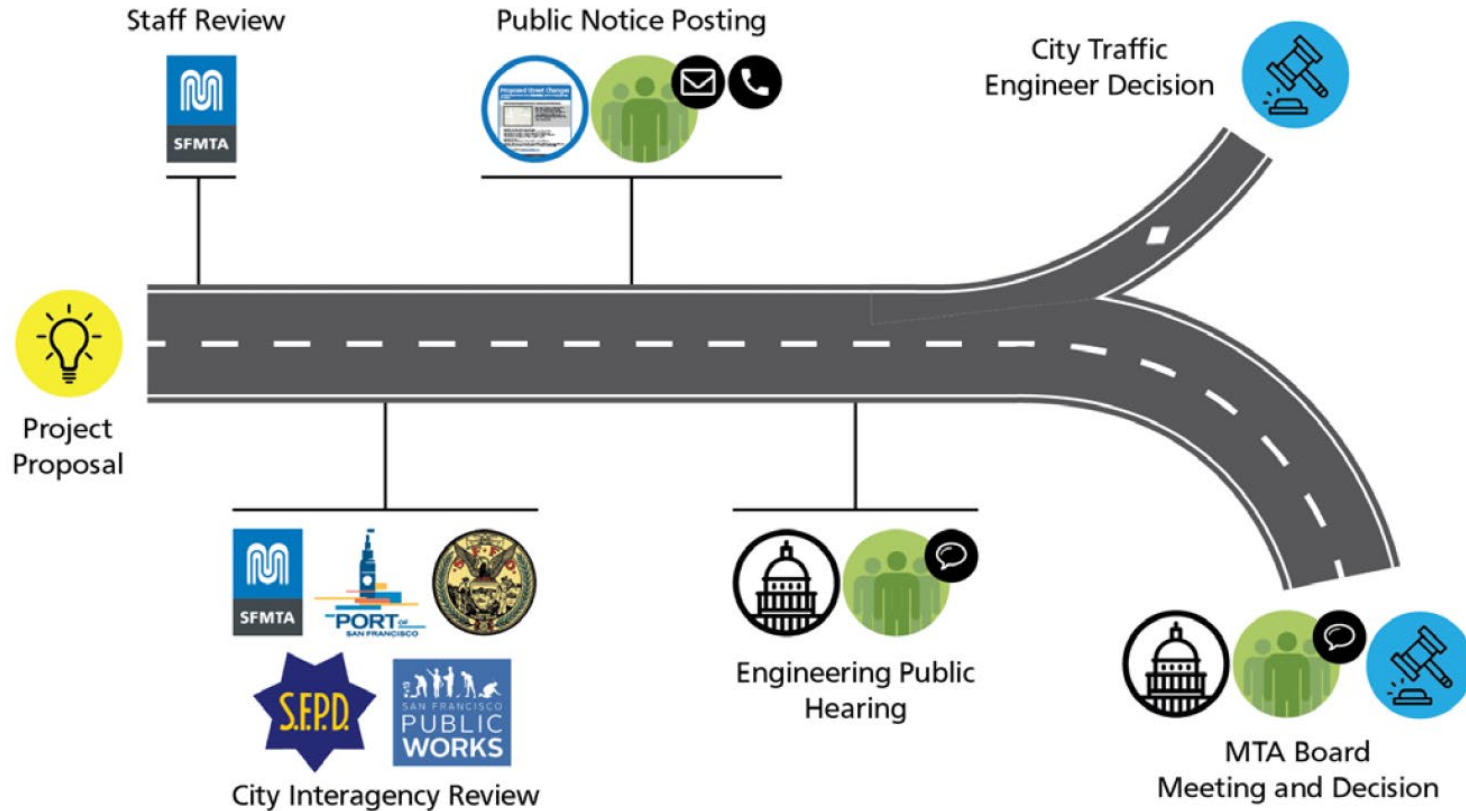
Conference Line: 1-415-523-2709

Conference ID: 836 632 456#

Please sign up to speak at [SFMTA.com/ENGSpeakerCard](https://sfmta.com/ENGSpeakerCard)

Proposed Street Changes

How does a proposed street change get approved?



<https://www.sfmta.com/committees/engineering-public-hearings>

Public Hearing Decision Posting

Results will be posted by 5 PM next Friday

sfmta.com/engineering

Select Meeting
from List of Past
Meetings



Past Meetings & Events for this Committee

- May 19** **Engineering Public Hearing Meeting, May 19, 2023**
The Streets Division of the San Francisco Municipal Transportation Agency will hold an online...
- May 5** **Engineering Public Hearing Meeting, May 5, 2023**
The Streets Division of the San Francisco Municipal Transportation Agency will hold an online...
- Apr 21** **Engineering Public Hearing Meeting, April 21, 2023**
The Streets Division of the San Francisco Municipal Transportation Agency will hold an online...

[View all past Meetings & Events >](#)



SFMTA

December 6, 2024

Engineering Public Hearing

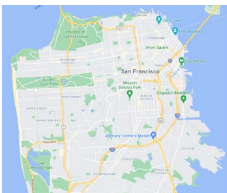
sfmta.com/enghearing

Conference Line: 1-415-523-2709

Conference ID: 836 632 456#

Please sign up to speak at [SFMTA.com/ENGSpeakerCard](https://sfmta.com/ENGSpeakerCard)

GENERAL PUBLIC COMMENT

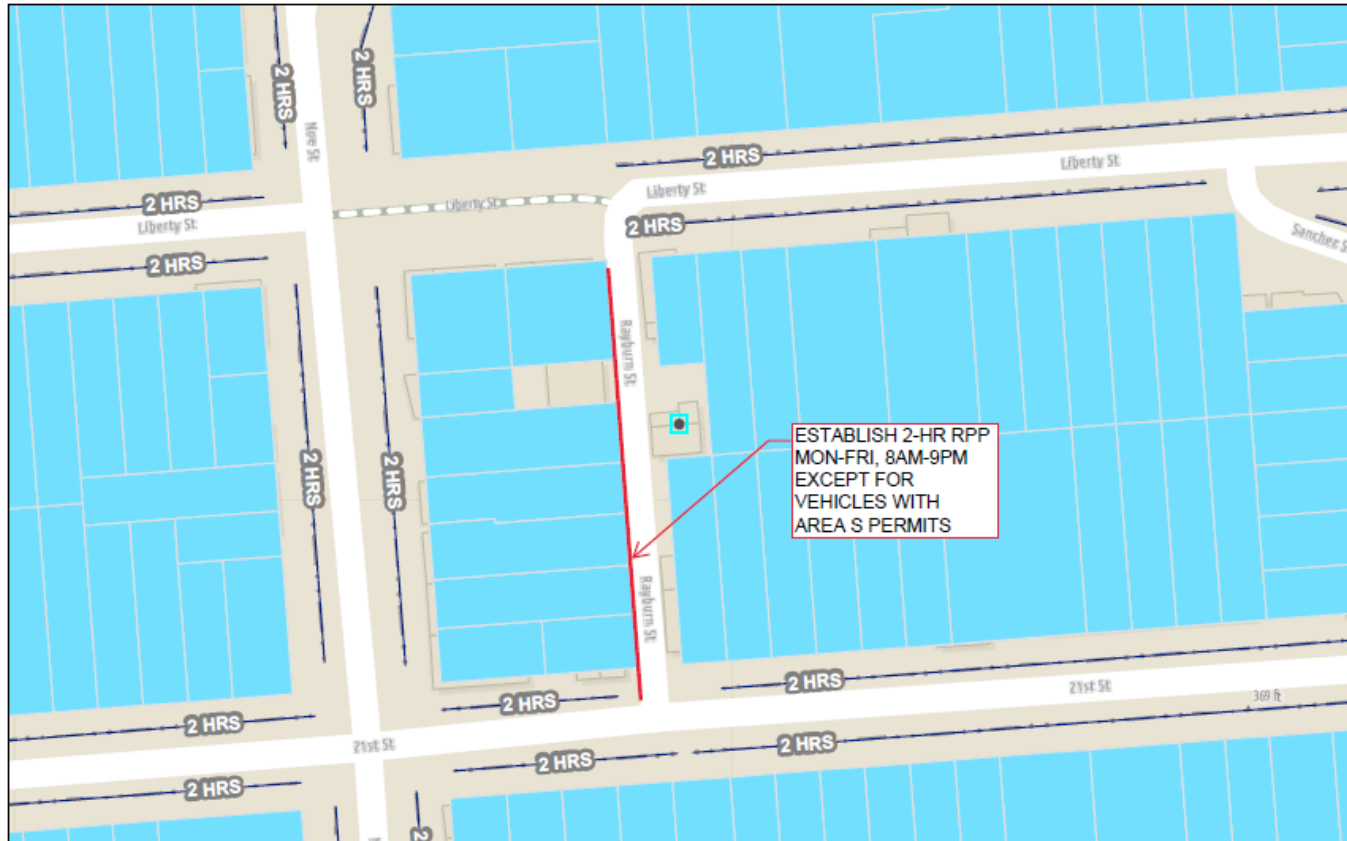


Conference Line: **1-415-523-2709** (conference ID: 836 632 456#)
To comment on an item, press *5 to raise hand and *6 to unmute when prompted.

1. ESTABLISH – RESIDENTIAL PERMIT PARKING AREA S

ESTABLISH – 2-HOUR PARKING, 8 AM TO 9 PM, MONDAY THROUGH FRIDAY, EXCEPT FOR VEHICLES WITH AREA S PERMITS

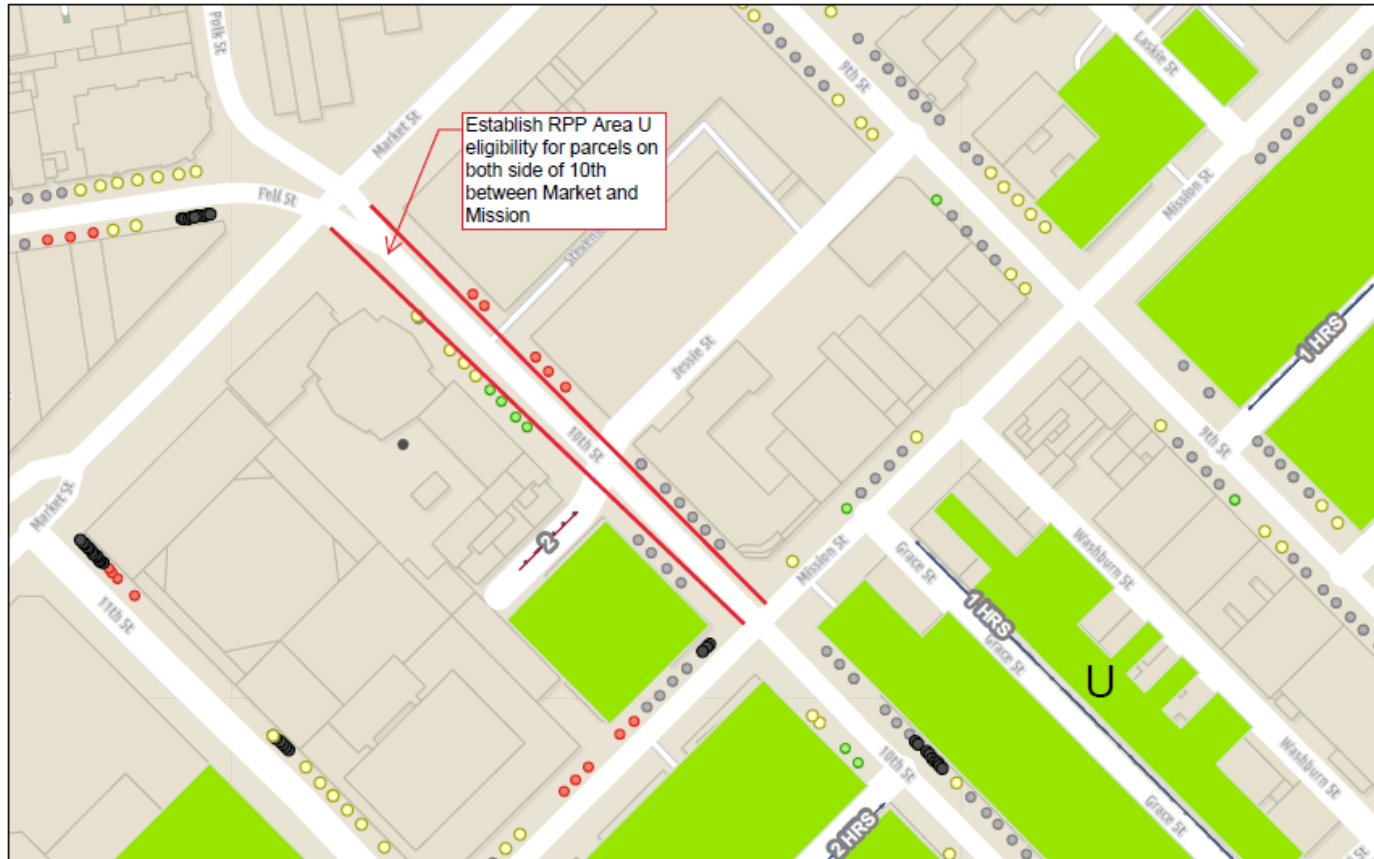
Rayburn Street, west side, between Liberty Street and 21st Street (Supervisor District 8) (Requires approval by the SFMTA Board) Lulu Brien, lulu.brien@sfmta.com



Conference Line: **1-415-523-2709** (conference ID: 836 632 456#)

To comment on an item, press *5 to raise hand and *6 to unmute when prompted.

2. ESTABLISH - RESIDENTIAL PERMIT PARKING AREA U (Eligibility only, no signs)
10th Street, both sides, between Mission Street and Market Street
(Supervisor District 6) (Requires approval by the SFMTA Board) Lulu Brien, lulu.brien@sfmta.com

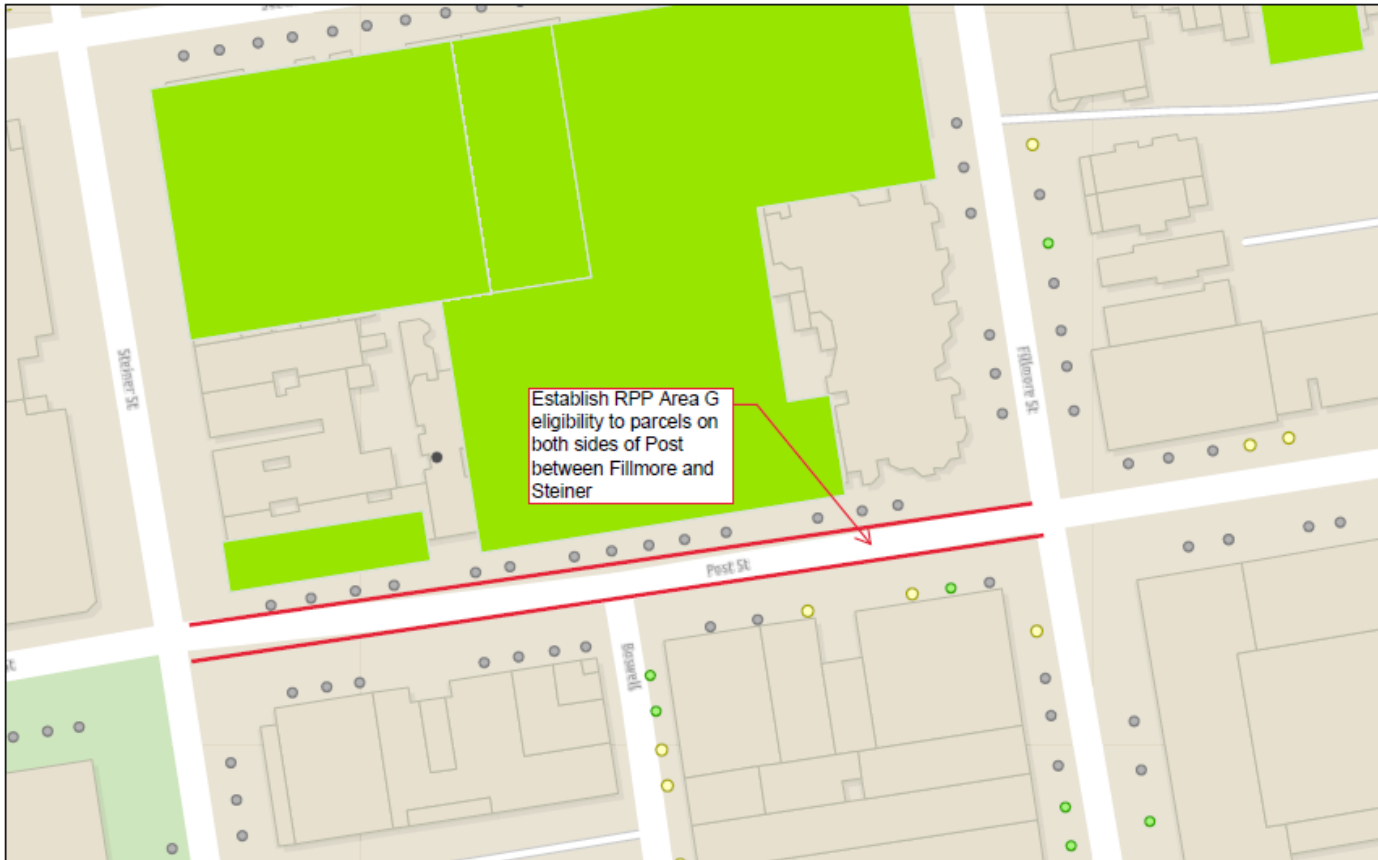


Conference Line: **1-415-523-2709** (conference ID: 836 632 456#)
To comment on an item, press *5 to raise hand and *6 to unmute when prompted.

3. ESTABLISH - RESIDENTIAL PERMIT PARKING AREA G (Eligibility only, no signs)

Post Street, both sides, from Steiner Street to Fillmore Street

(Supervisor District 5) (Requires approval by the SFMTA Board) Lulu Brien, lulu.brien@sfmta.com

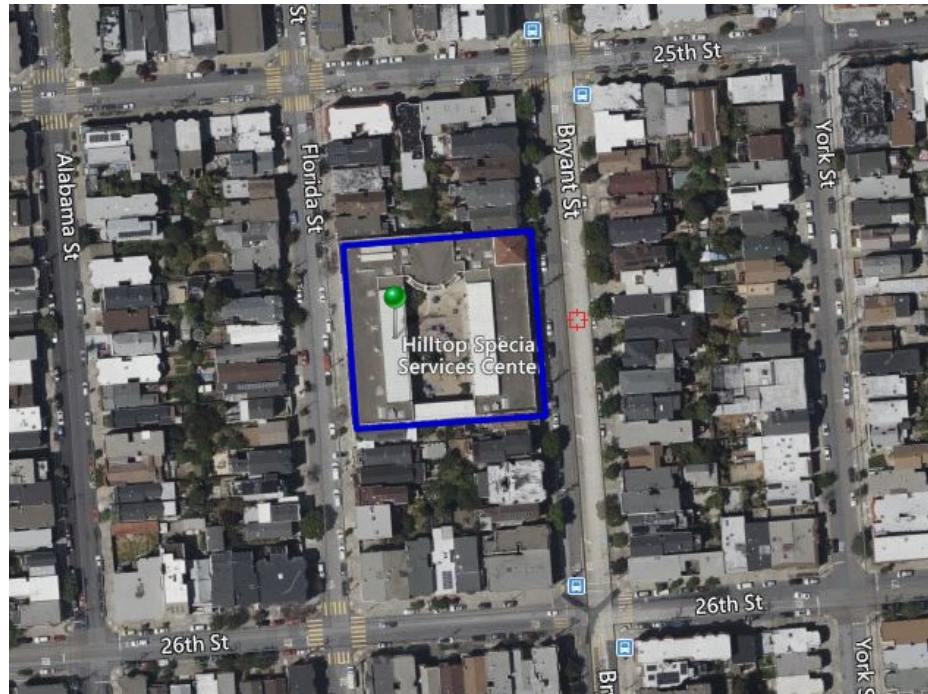


Conference Line: **1-415-523-2709** (conference ID: 836 632 456#)

To comment on an item, press *5 to raise hand and *6 to unmute when prompted.

4(a). RESCIND - TOW AWAY, NO PARKING, PASSENGER ZONE, 7AM TO 6PM, MON-FRI
Bryant Street, west side, 142 feet to 275 feet south of 25th Street (133-foot zone)

4(b). ESTABLISH - TOW AWAY, NO PARKING, PART-TIME PASSENGER LOADING ZONE, 7AM TO 6PM, MON-FRI
Bryant Street, west side, 142 feet to 335 feet south of 25th Street (193-foot zone)
(Supervisor District 9) (Approvable by the City Traffic Engineer) Andre Wright,
andre.wright@sfmta.com

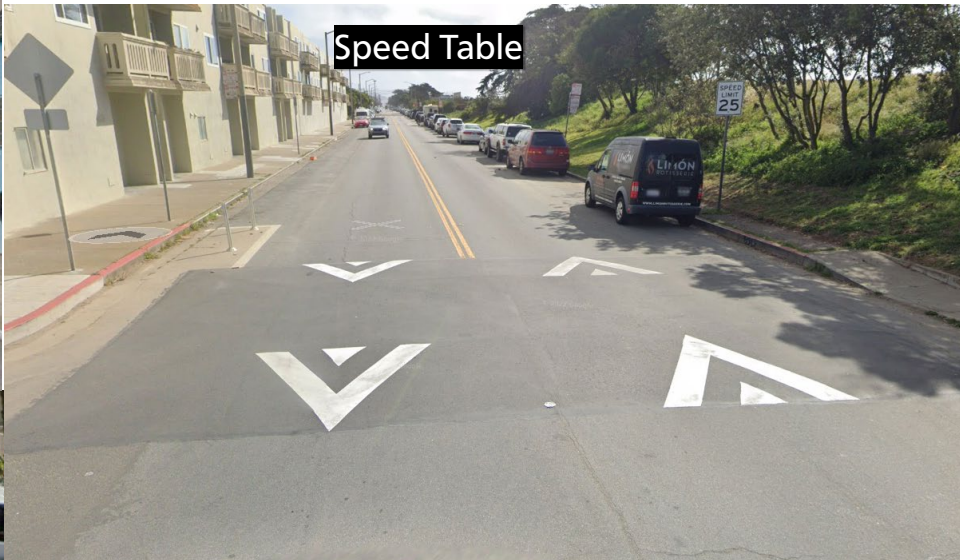


Conference Line: **1-415-523-2709** (conference ID: 836 632 456#)
To comment on an item, press *5 to raise hand and *6 to unmute when prompted.

Speed Hump



Speed Table



3-Lump Speed Cushion



Raised Crosswalk



5-Lump Speed Cushion



5(a). ESTABLISH – SPEED CUSHIONS

- A. Cambridge Street, between West View Avenue and Sweeny Street (1 3-lump cushion)
- B. Cambridge Street, between Sweeny Street and Silver Avenue (2 3-lump cushions)
- C. Cambridge Street, between Silliman Street and Felton Street (2 3-lump cushions)
- D. Cambridge Street, between Bacon Street and Wayland Street (2 3-lump cushions)

5(b). ESTABLISH – SPEED TABLE

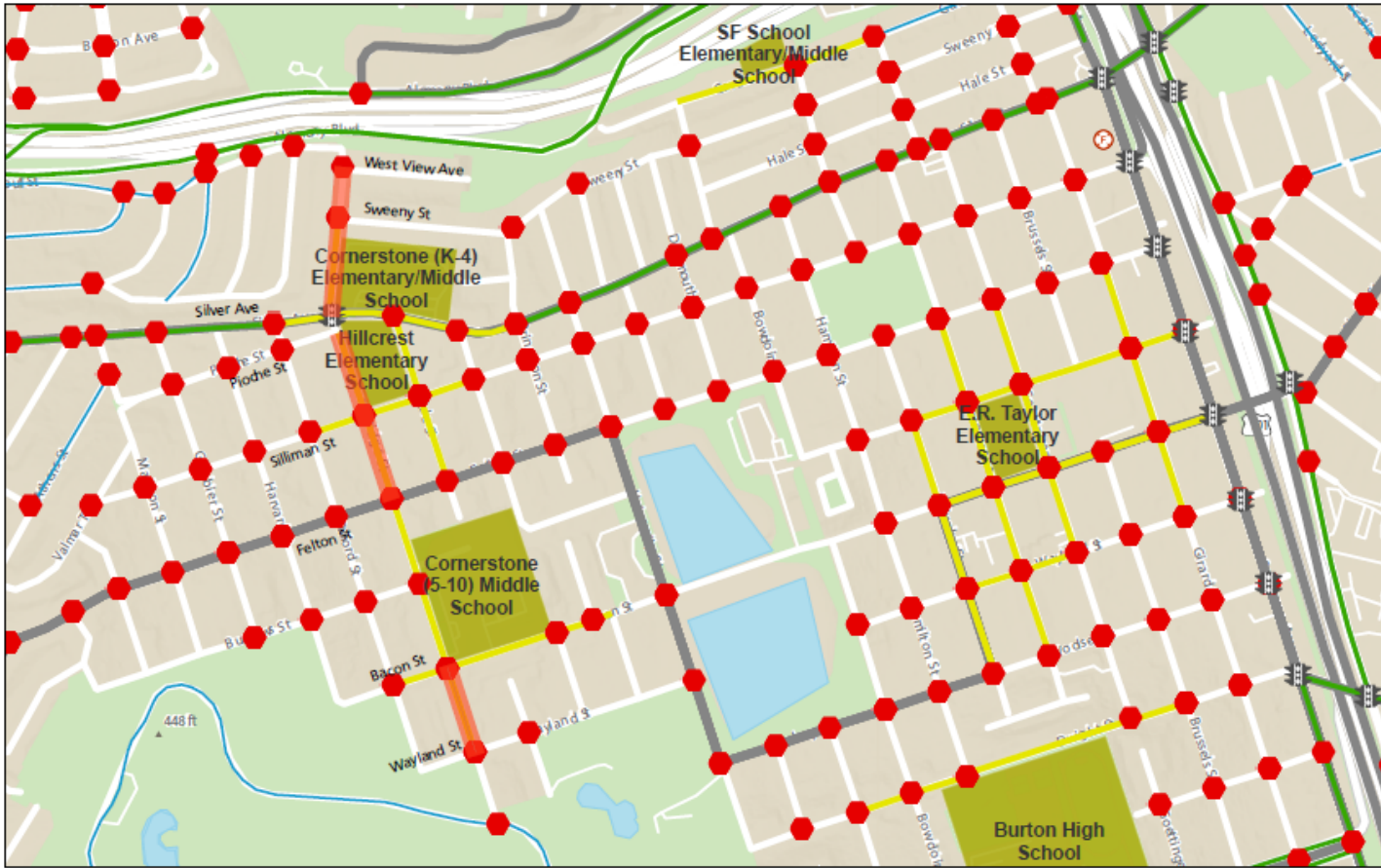
Cambridge Street, between Pioche Street and Silliman Street

(Supervisor District 9) (Approvable by the City Traffic Engineer) John Garzee,
john.garzee@sfmta.com












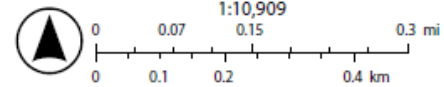
Conference Line: **1-415-523-2709** (conference ID: 836 632 456#)

To comment on an item, press *5 to raise hand and *6 to unmute when prompted.

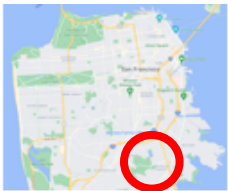


2/1/2023

-  Traffic Signal
-  Stop Signs
-  School Zone Speed Limits
-  Bike Network
-  Muni - Simple Routes
-  Existing Traffic Calming
-  Schools
-  Fire Stations
-  Proposed Traffic Calming



Est. NASA, NGA, USGS, FEMA, Esri Community Maps Contributors, California State Parks, Esri, HERE, Garmin, SafeGraph, GeoTechnologies,



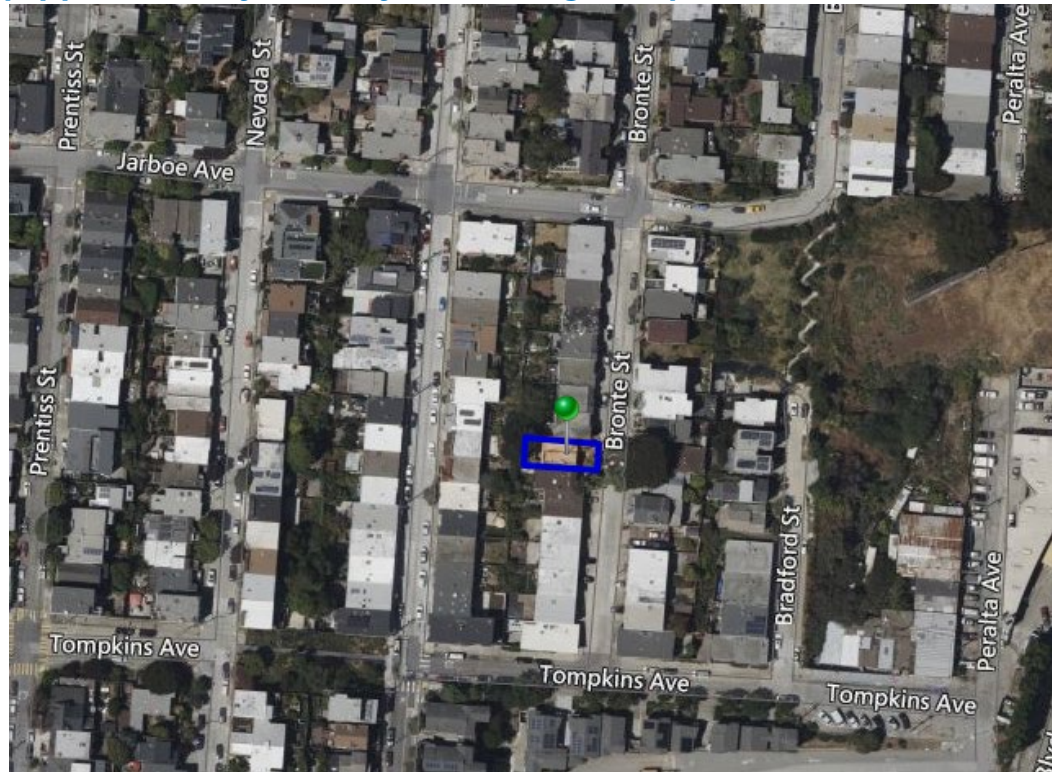
Conference Line: **1-415-523-2709** (conference ID: 836 632 456#)

To comment on an item, press *5 to raise hand and *6 to unmute when prompted.

6. ESTABLISH – TOW-AWAY, NO PARKING ANY TIME

**Bronte Street, west side, from 195 feet to 208 feet south of Jarboe Avenue
(fronting 144 Bronte Street)**

Bronte Street, from 151 Bronte Street south side property line to 14 feet westerly (crossing Bronte Street and along the south side curb line) (Supervisor District 9) (Requires approval by the SFMTA Board) (Approvable by the City Traffic Engineer) Eric Luu, eric.luu@sfmta.com

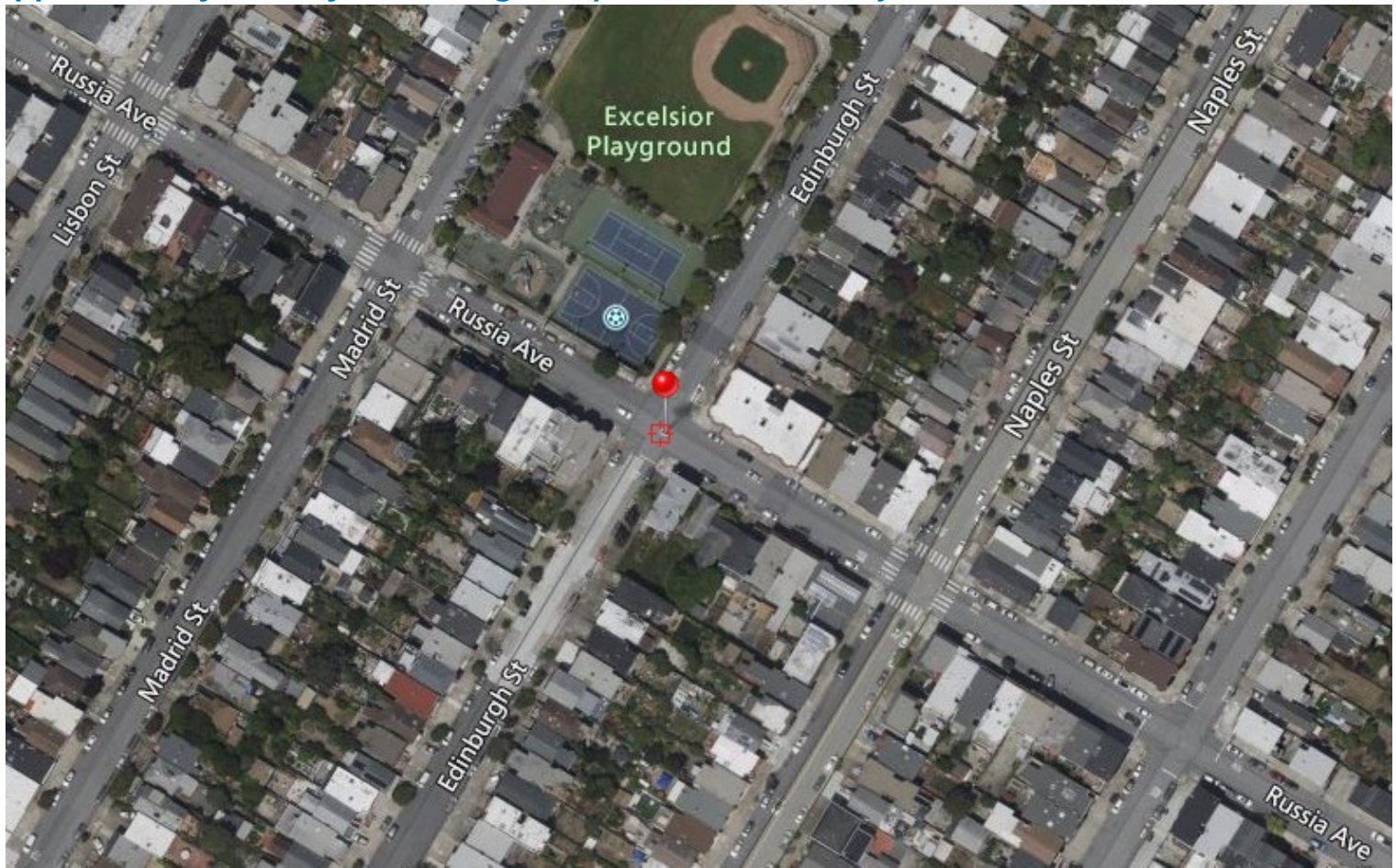


Conference Line: **1-415-523-2709** (conference ID: 836 632 456#)

To comment on an item, press *5 to raise hand and *6 to unmute when prompted.

7. ESTABLISH – STOP SIGNS

Russia Avenue, eastbound and westbound, at Edinburgh Street (Supervisor District 11)
(Approvable by the City Traffic Engineer) Juan Hernandez, juan.hernandez@sfmta.com



Conference Line: **1-415-523-2709** (conference ID: 836 632 456#)

To comment on an item, press *5 to raise hand and *6 to unmute when prompted.

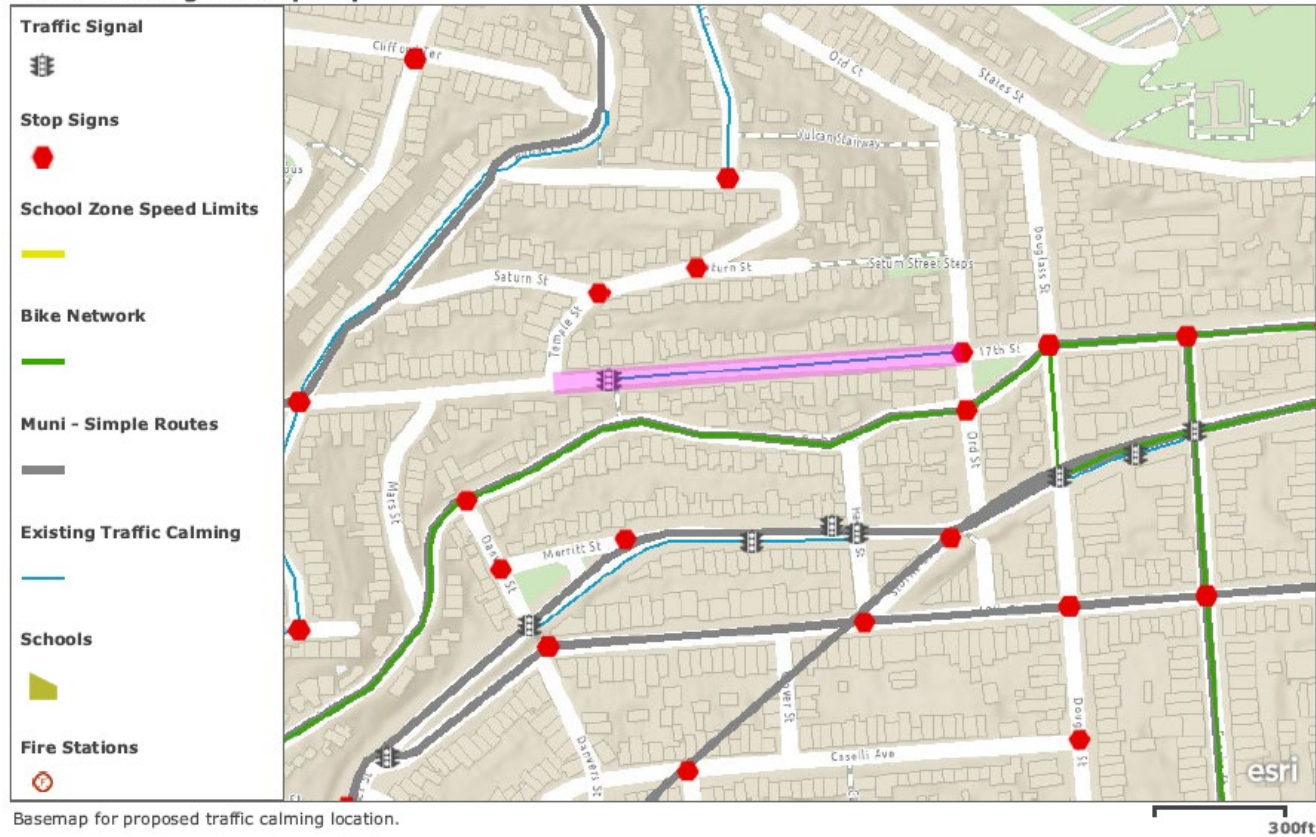
8. ESTABLISH – SPEED CUSHION

17th Street, between Ord Street and Temple Street (1 5-lump cushion)

(Supervisor District 8) (Approvable by the City Traffic Engineer) John Garzee,

john.garzee@sfmta.com

Traffic Calming Look Up Map



Basemap for proposed traffic calming location.

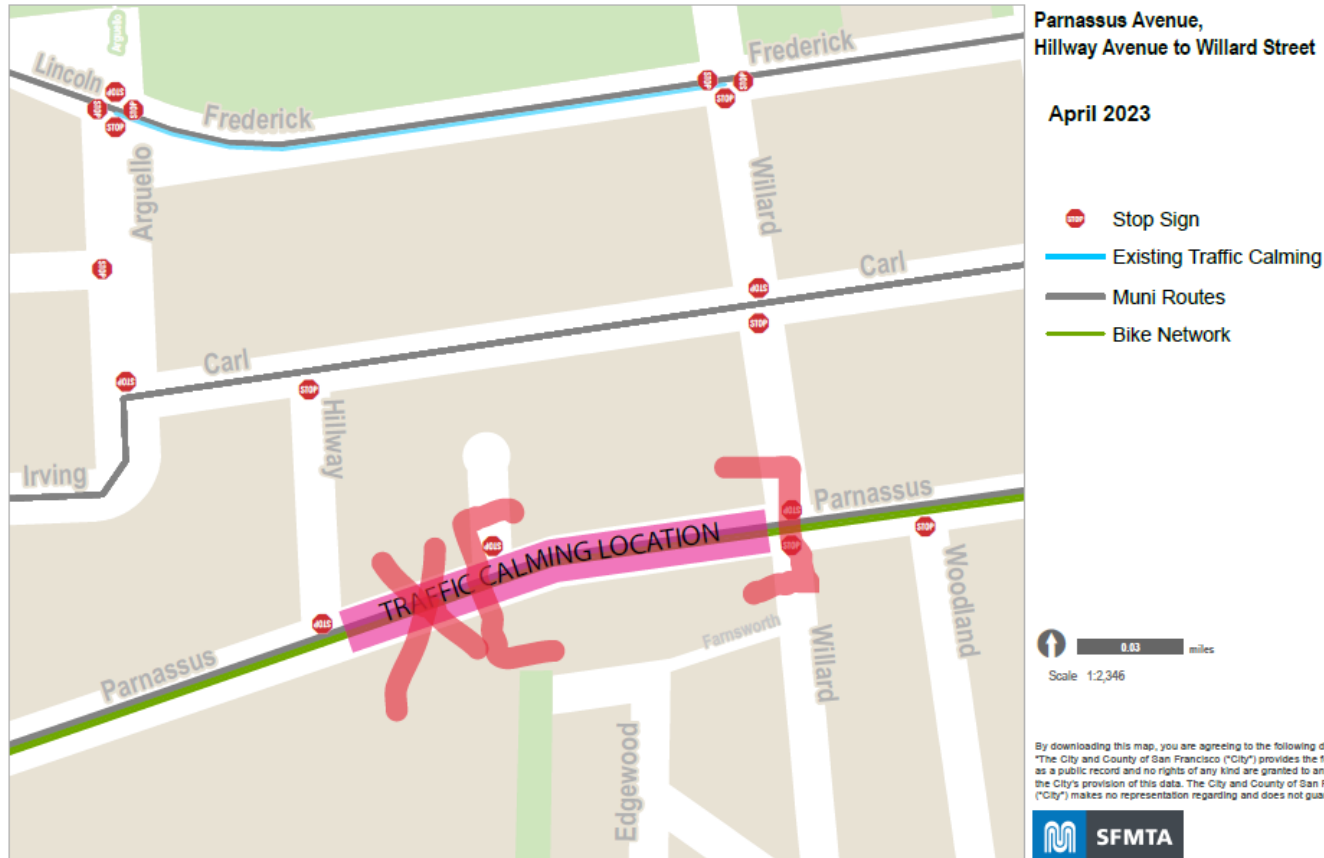


Conference Line: **1-415-523-2709** (conference ID: 836 632 456#)

To comment on an item, press *5 to raise hand and *6 to unmute when prompted.

9. ESTABLISH – SPEED CUSHION

Parnassus Avenue, between Hill Point Avenue and Willard Street (1 7-lump cushion)
(Supervisor District 8) (Approvable by the City Traffic Engineer) John Garzee,
john.garzee@sfmta.com



Conference Line: **1-415-523-2709** (conference ID: 836 632 456#)
To comment on an item, press *5 to raise hand and *6 to unmute when prompted.

10. ESTABLISH – BUS ZONE

Columbus Avenue, east side, from 123 feet to 141 feet north of Greenwich Street
(removes one general 18-foot metered parking space) (Supervisor District 3) (Requires approval by the SFMTA Board)

Ryan Yun, ryan.yun@sfmta.com



Conference Line: **1-415-523-2709** (conference ID: 836 632 456#)

To comment on an item, press *5 to raise hand and *6 to unmute when prompted.

11. ESTABLISH – NO LEFT TURN

Mission Street, eastbound, at Spear Street (Supervisor District 6) (Approvable by the City Traffic Engineer)

Darcie Alaba, darcie.alaba@sfmta.com



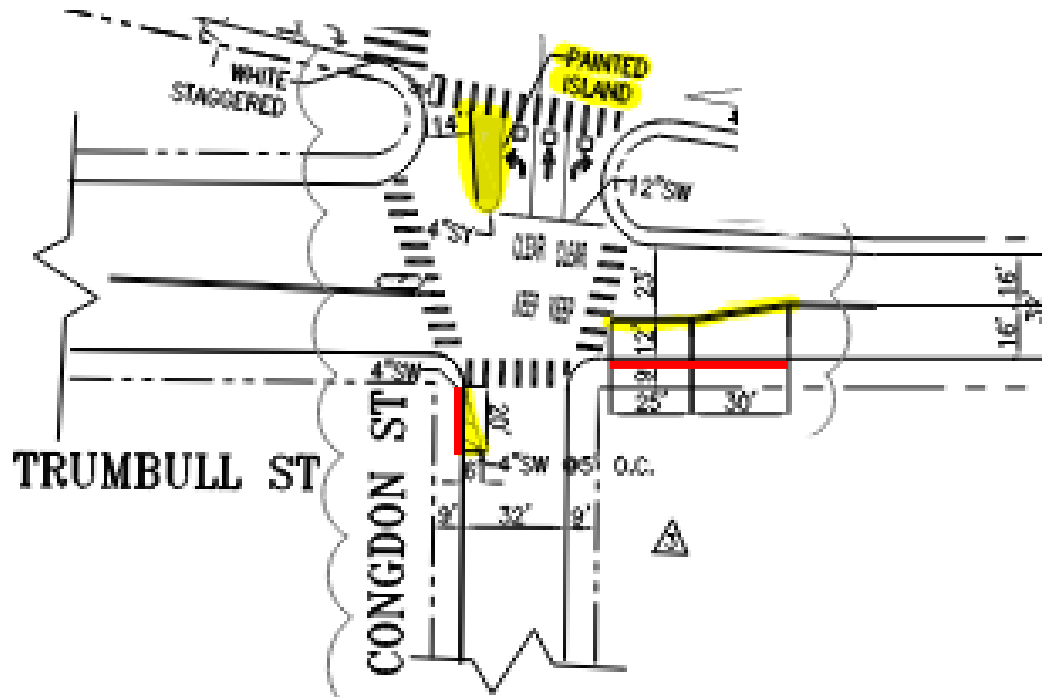
Conference Line: **1-415-523-2709** (conference ID: 836 632 456#)

To comment on an item, press *5 to raise hand and *6 to unmute when prompted.

12. ESTABLISH – TOW-AWAY, NO STOPPING ANY TIME

Trumbull Street, south side, from Congdon Street to 55 feet easterly
Congdon Street, west side, from Trumbull Street to 20 feet southerly
(Supervisor District 11) (Requires approval by the SFMTA Board) Michael Tsai,
michael.tsai@sfmta.com

Proposal to shift southbound and westbound traffic lanes to increase visibility and address collision pattern.



Conference Line: **1-415-523-2709** (conference ID: 836 632 456#)

To comment on an item, press *5 to raise hand and *6 to unmute when prompted.

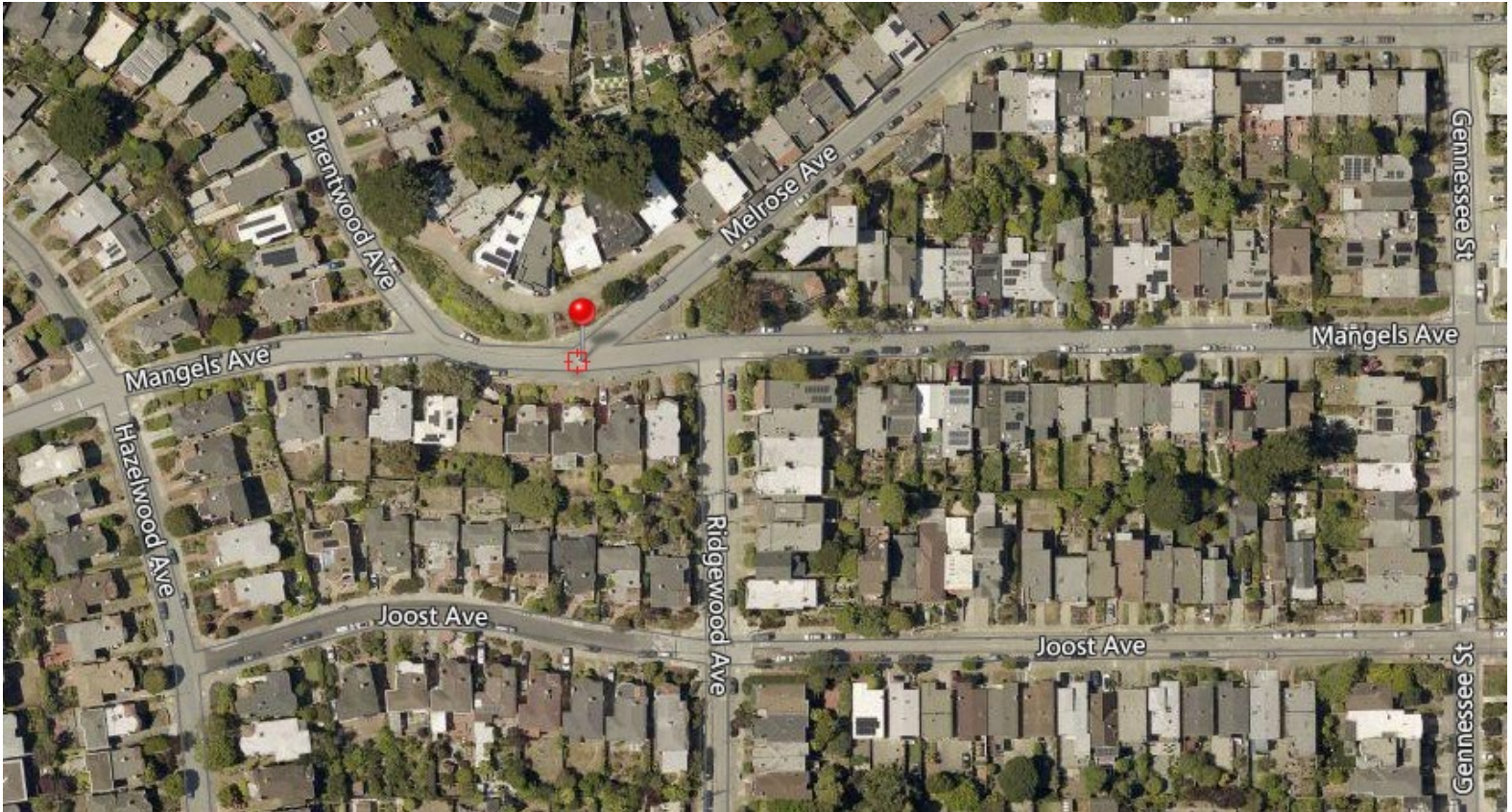
13. ESTABLISH – STOP SIGN

Melrose Avenue, southbound, at Mangels Avenue

Ridgewood Avenue, northbound, at Mangels Avenue

(Supervisor District 7) (Approvable by the City Traffic Engineer) Michael Tsai,

michael.tsai@sfmta.com



Conference Line: **1-415-523-2709** (conference ID: 836 632 456#)

To comment on an item, press *5 to raise hand and *6 to unmute when prompted.

14. ESTABLISH – NO PARKING ANY TIME

Baker Street, east side, from Turk Boulevard to 23 feet southerly

(Supervisor District 2) (Requires approval by the SFMTA Board) Michael Tsai,

michael.tsai@sfmta.com



Conference Line: **1-415-523-2709** (conference ID: 836 632 456#)

To comment on an item, press *5 to raise hand and *6 to unmute when prompted.

15. ESTABLISH – SPEED CUSHION (2 3-lump cushions)

24th Avenue, between Lawton Street and Moraga Street

(Supervisor District 4) (Approvable by the City Traffic Engineer) John Garzee,
john.garzee@sfmta.com

24th Avenue, between Lawton Street and Moraga Street



Conference Line: **1-415-523-2709** (conference ID: 836 632 456#)

To comment on an item, press *5 to raise hand and *6 to unmute when prompted.

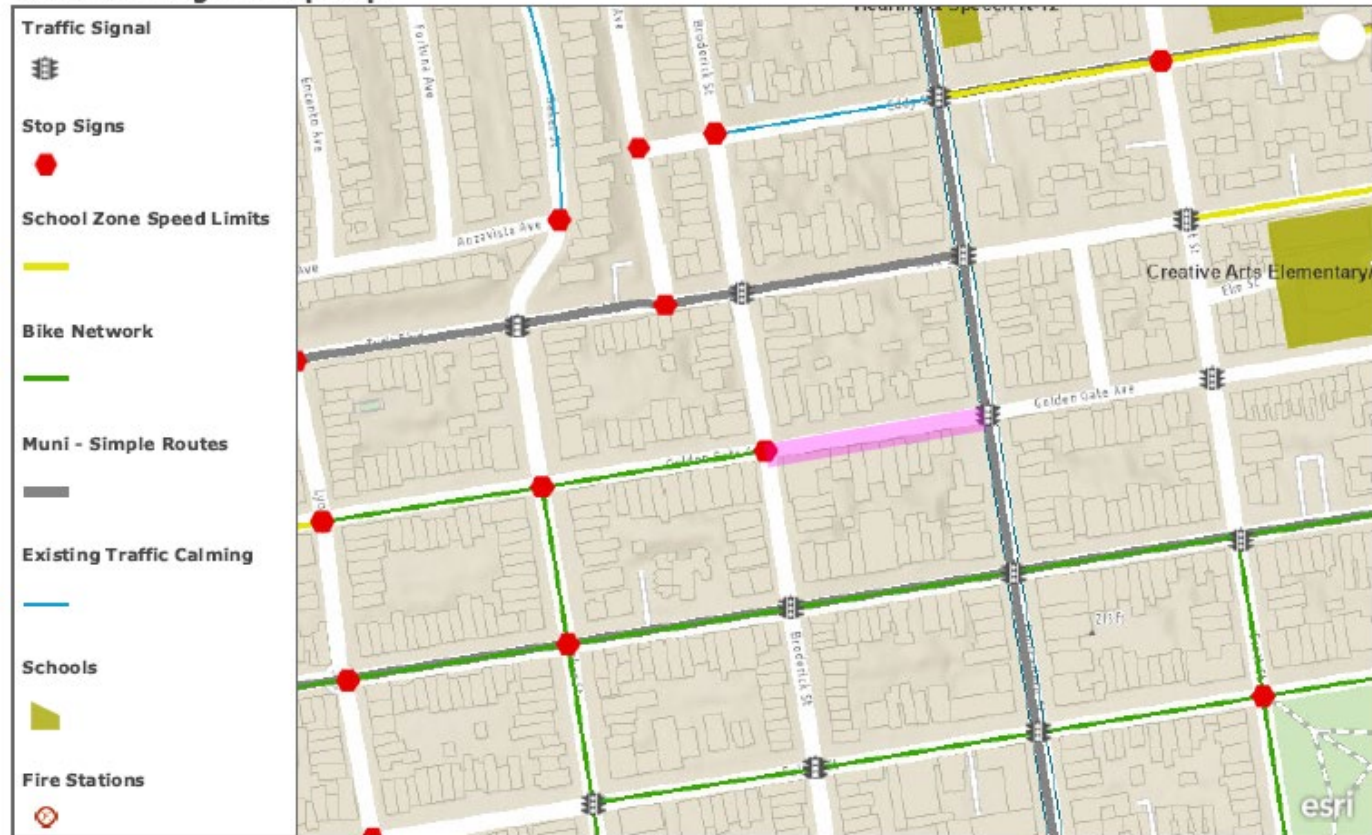
16. ESTABLISH – SPEED CUSHION (1 3-lump cushion)

Golden Gate Avenue, between Divisadero Street and Broderick Street

(Supervisor District 5) (Approvable by the City Traffic Engineer) John Garzee,

john.garzee@sfmta.com

Traffic Calming Look Up Map



Conference Line: **1-415-523-2709** (conference ID: 836 632 456#)

To comment on an item, press *5 to raise hand and *6 to unmute when prompted.

17. ESTABLISH – SPEED TABLES

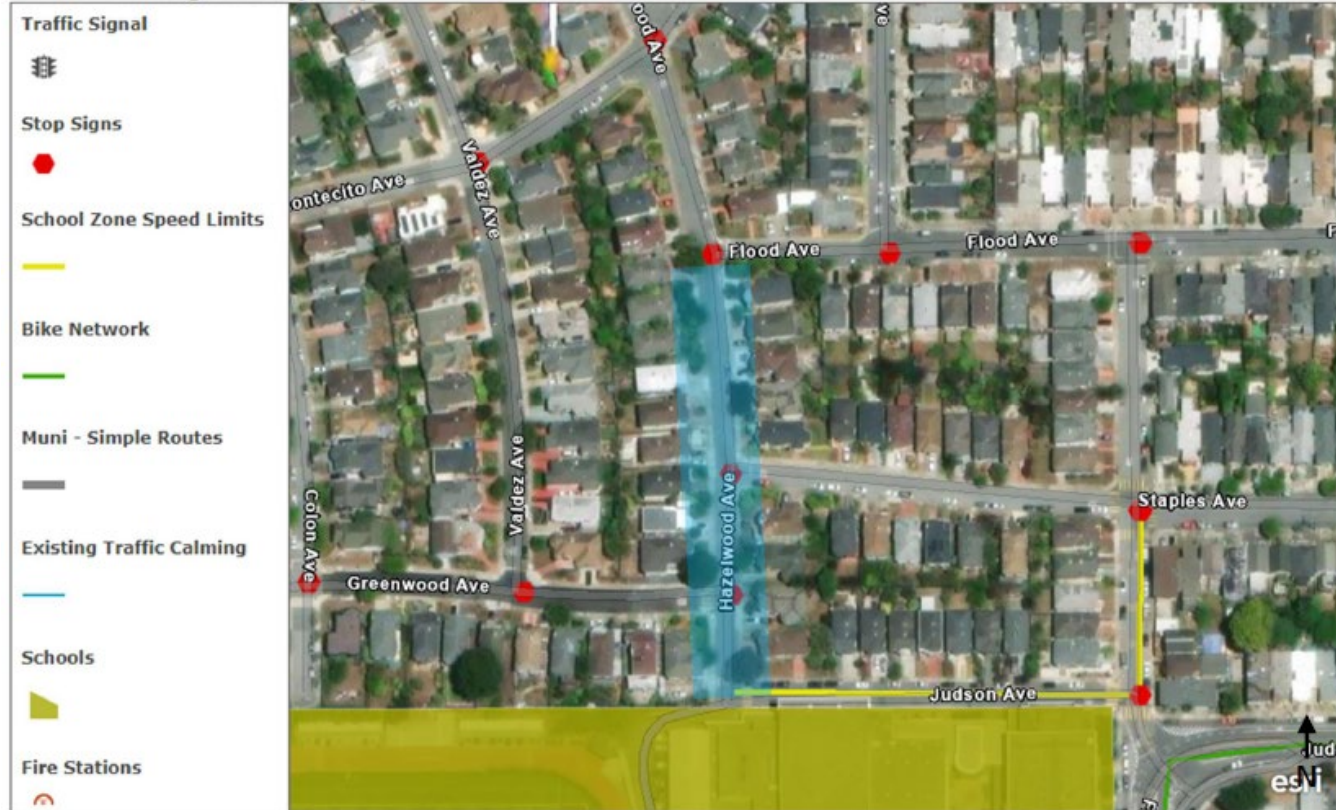
Hazelwood Avenue, between Judson Avenue and Staples Avenue (1 speed table)

Hazelwood Avenue, between Flood Avenue and Staples Avenue (1 speed table)

(Supervisor District 7) (Approvable by the City Traffic Engineer) John Garzee,

john.garzee@sfmta.com

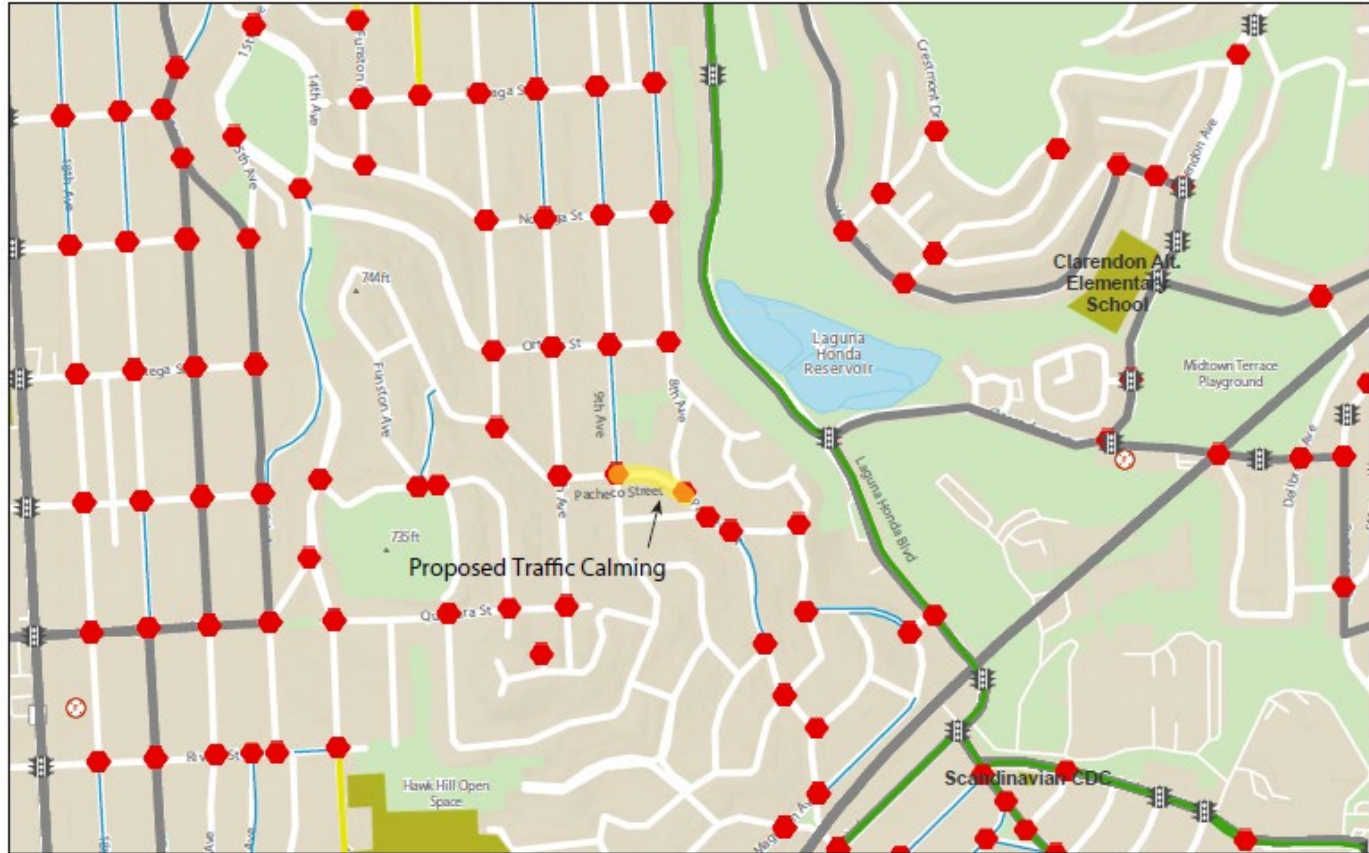
Traffic Calming Look Up Map



Conference Line: **1-415-523-2709** (conference ID: 836 632 456#)

To comment on an item, press *5 to raise hand and *6 to unmute when prompted.

18. ESTABLISH – SPEED CUSHION (1 3-lump cushion)
Pacheco Street, between 8th Avenue and 9th Avenue
(Supervisor District 7) (Approvable by the City Traffic Engineer) John Garzee,
john.garzee@sfmta.com



Conference Line: **1-415-523-2709** (conference ID: 836 632 456#)
To comment on an item, press *5 to raise hand and *6 to unmute when prompted.

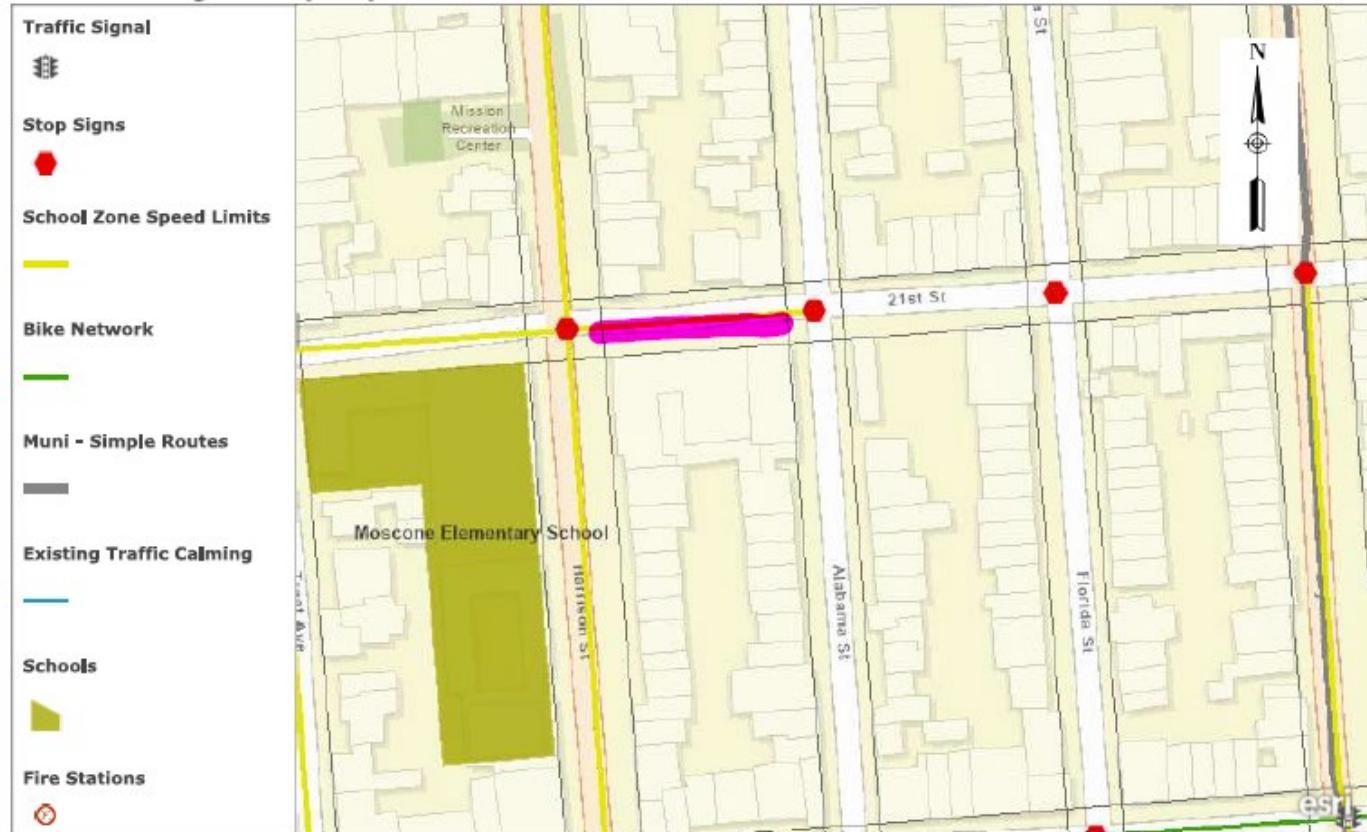
19. ESTABLISH – SPEED CUSHION (1 3-lump cushion)

21st Street, between Alabama Street and Harrison Street

(Supervisor District 9) (Approvable by the City Traffic Engineer) John Garzee,

john.garzee@sfmta.com

Traffic Calming Look Up Map



Conference Line: **1-415-523-2709** (conference ID: 836 632 456#)

To comment on an item, press *5 to raise hand and *6 to unmute when prompted.

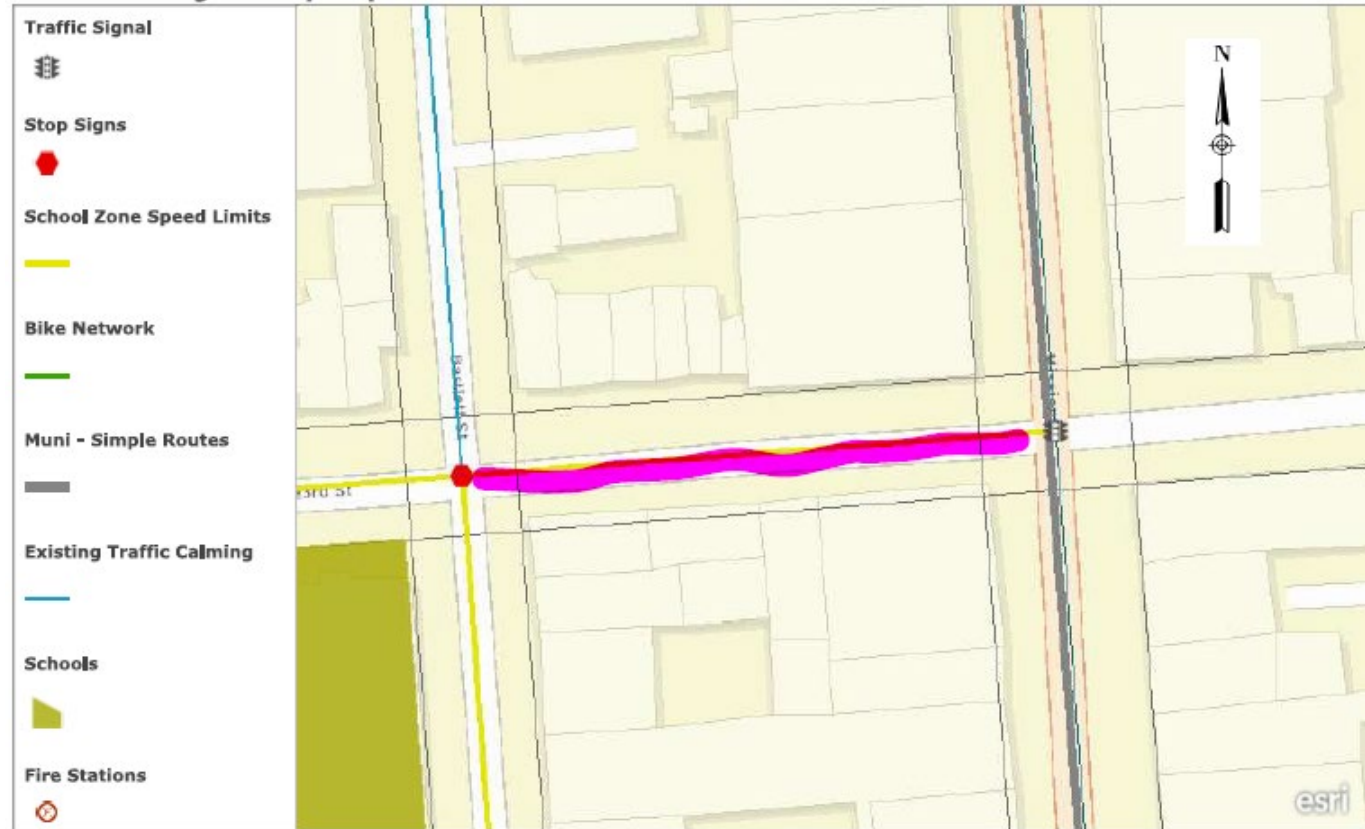
20. ESTABLISH – SPEED TABLE (1 speed table)

23rd Street, between Mission Street and Bartlett Street

(Supervisor District 9) (Approvable by the City Traffic Engineer) John Garzee,

john.garzee@sfmta.com

Traffic Calming Look Up Map



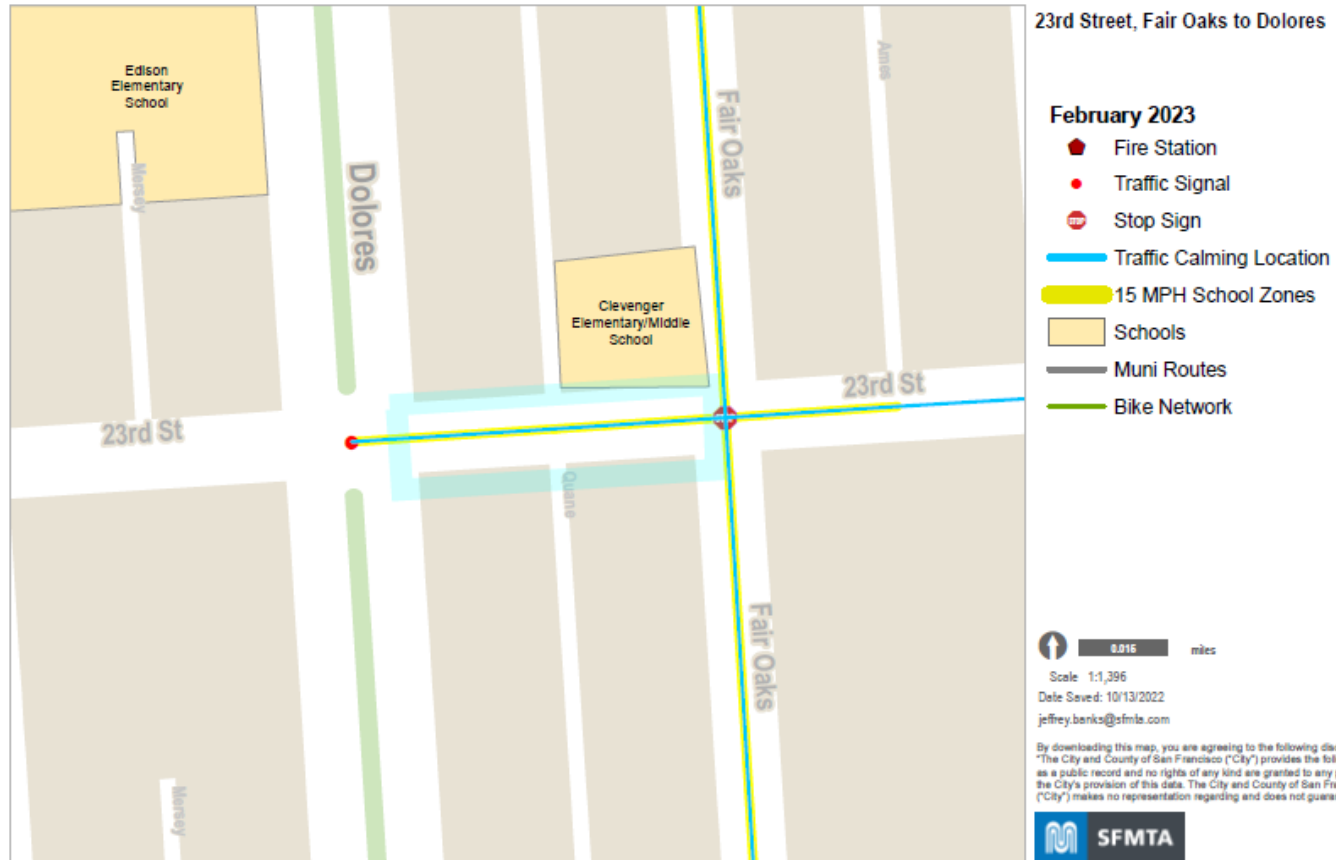
Conference Line: **1-415-523-2709** (conference ID: 836 632 456#)

To comment on an item, press *5 to raise hand and *6 to unmute when prompted.

21. ESTABLISH – SPEED TABLE (1 speed table)

23rd Street, between Dolores Street and Fair Oaks Street

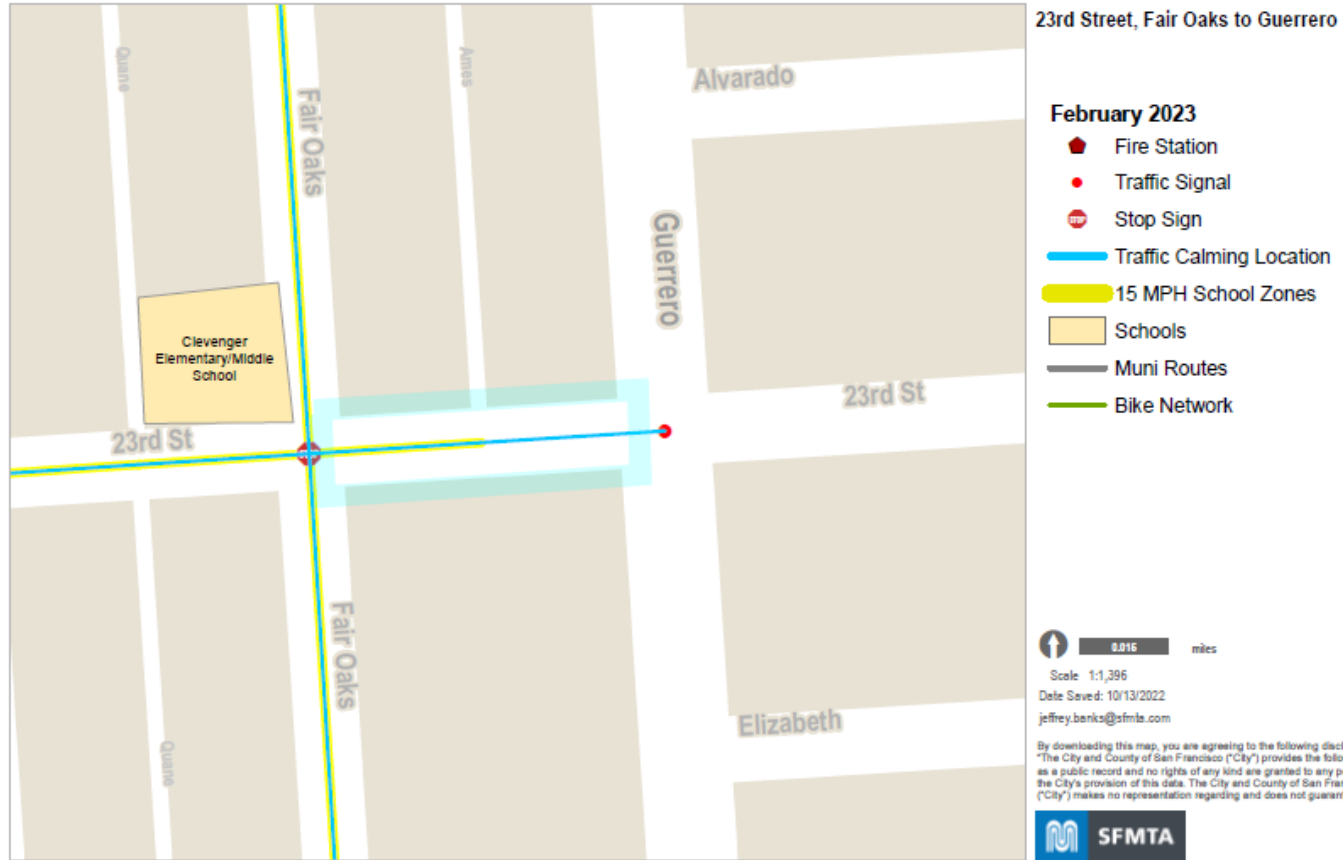
(Supervisor District 8) (Approvable by the City Traffic Engineer) John Garzee,
john.garzee@sfmta.com



Conference Line: **1-415-523-2709** (conference ID: 836 632 456#)

To comment on an item, press *5 to raise hand and *6 to unmute when prompted.

22. ESTABLISH – SPEED TABLE (1 speed table)
23rd Street, between Fair Oaks Street and Guerrero Street
(Supervisor District 8) (Approvable by the City Traffic Engineer) John Garzee,
john.garzee@sfmta.com



Conference Line: **1-415-523-2709** (conference ID: 836 632 456#)
To comment on an item, press *5 to raise hand and *6 to unmute when prompted.

23. ESTABLISH – SPEED TABLE (1 speed table)

Lippard Avenue, between Bosworth Street and Chenery Street

(Supervisor District 8) (Approvable by the City Traffic Engineer) John Garzee,

john.garzee@sfmta.com

Traffic Calming Look Up Map



Conference Line: **1-415-523-2709** (conference ID: 836 632 456#)

To comment on an item, press *5 to raise hand and *6 to unmute when prompted.

24. ESTABLISH – SPEED TABLE (1 speed table)

Miraloma Drive, between Juanita Way and Marne Avenue

(Supervisor District 7) (Approvable by the City Traffic Engineer) John Garzee,
john.garzee@sfmta.com



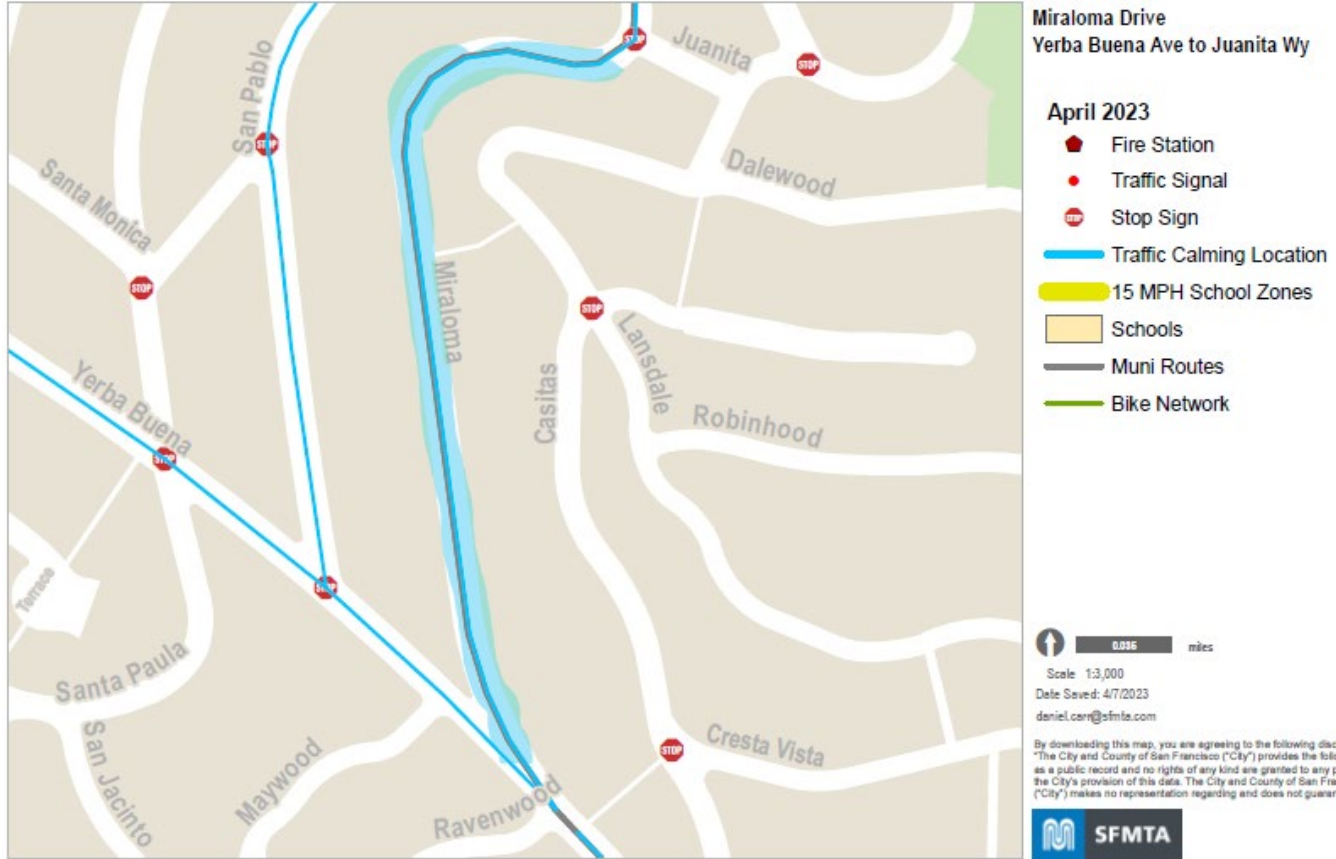
Conference Line: **1-415-523-2709** (conference ID: 836 632 456#)

To comment on an item, press *5 to raise hand and *6 to unmute when prompted.

25. ESTABLISH – SPEED TABLES (3 speed tables)

Miraloma Drive, between Yerba Buena Avenue and Juanita Way

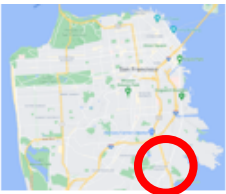
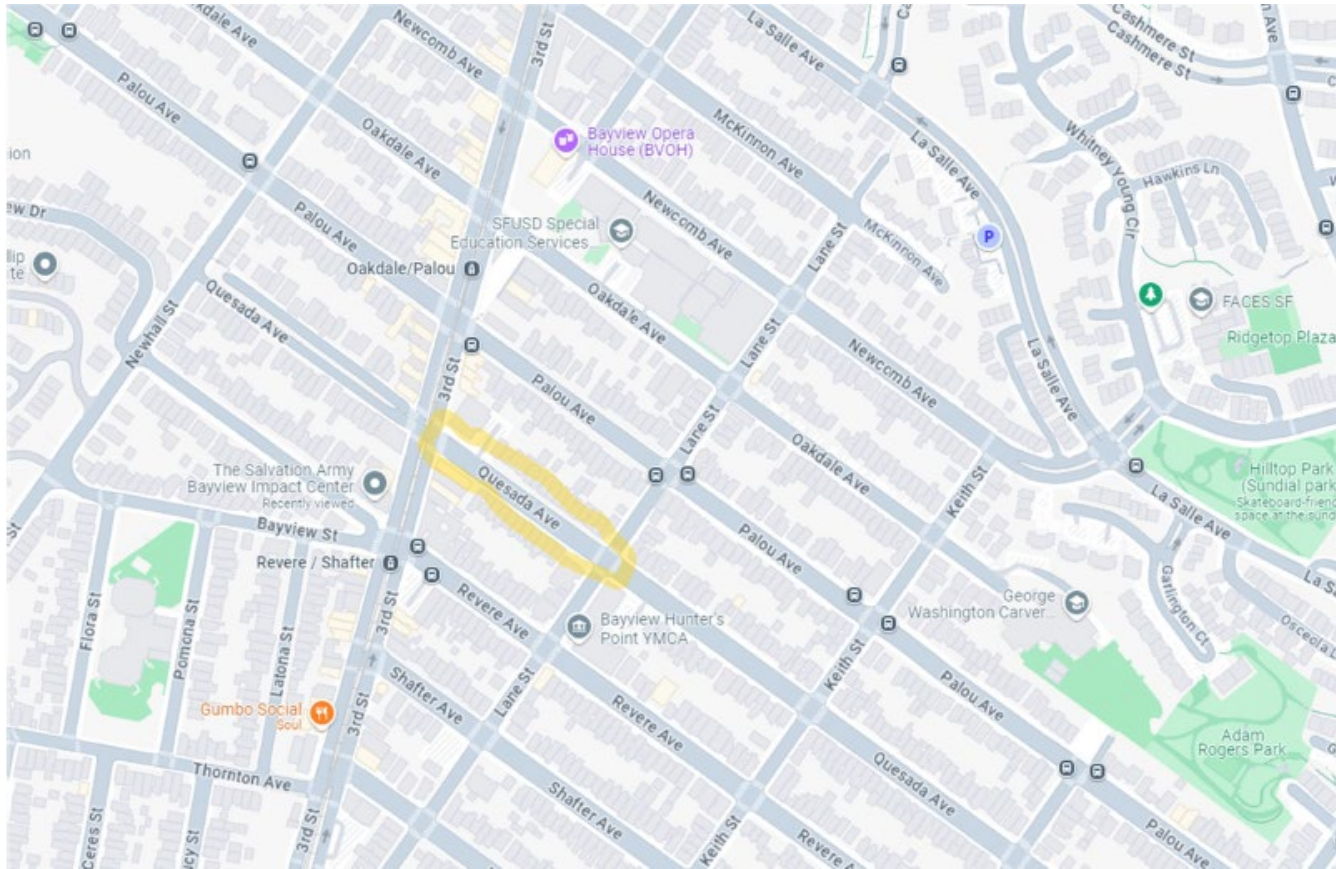
(Supervisor District 7) (Approvable by the City Traffic Engineer) John Garzee,
john.garzee@sfmta.com



Conference Line: **1-415-523-2709** (conference ID: 836 632 456#)

To comment on an item, press *5 to raise hand and *6 to unmute when prompted.

**26. ESTABLISH – SPEED CUSHIONS (2 3-lump cushions)
Quesada Avenue, between 3rd Street and Lane Street
(Supervisor District 10) (Approvable by the City Traffic Engineer) John Garzee,
john.garzee@sfmta.com**



Conference Line: **1-415-523-2709** (conference ID: 836 632 456#)
To comment on an item, press *5 to raise hand and *6 to unmute when prompted.

27. ESTABLISH – SPEED TABLES (2 speed tables)

Randall Street, between Chenery Street and Whitney Street

(Supervisor District 8) (Approvable by the City Traffic Engineer) John Garzee,

john.garzee@sfmta.com

Traffic Calming Look Up Map



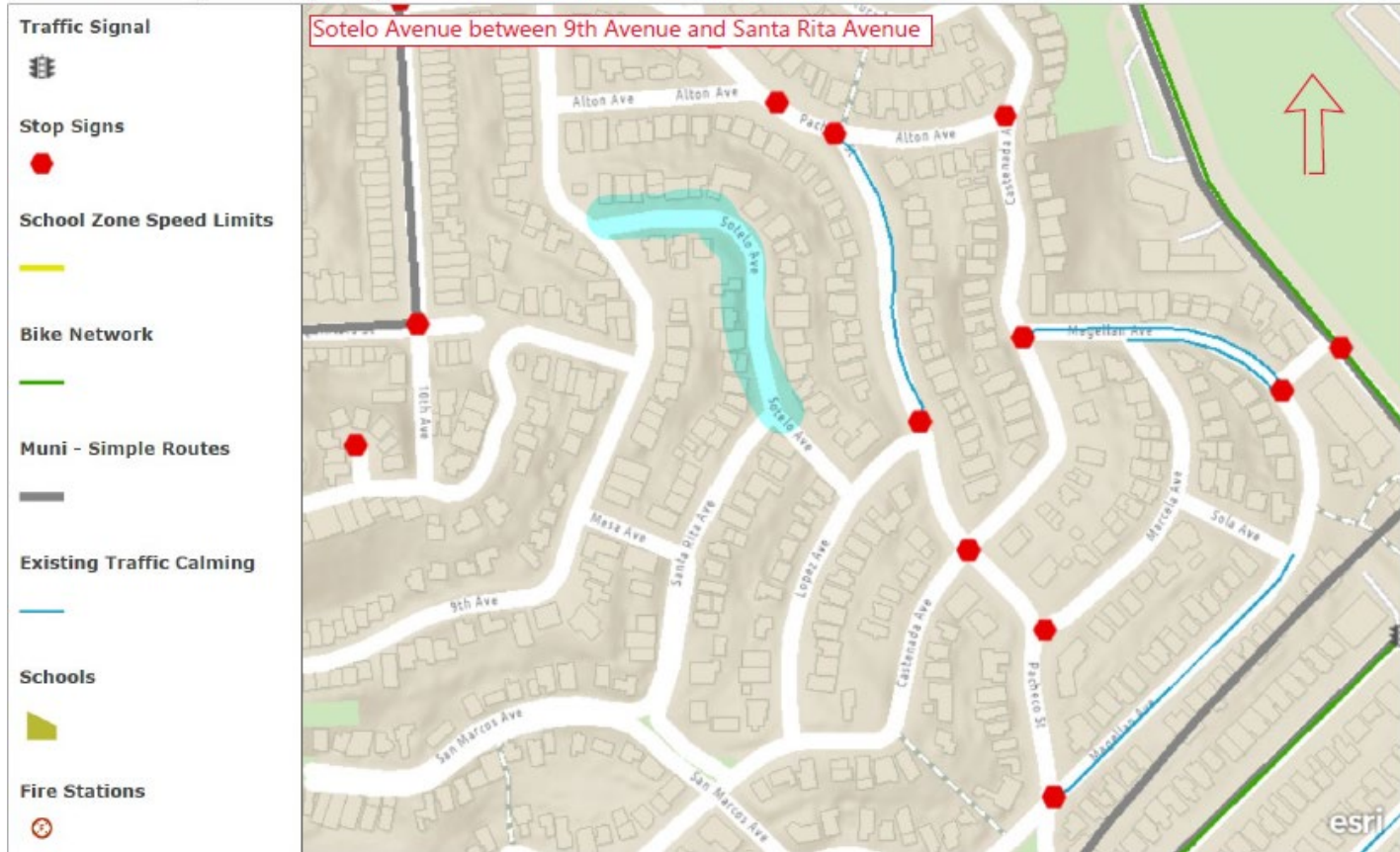
Conference Line: **1-415-523-2709** (conference ID: 836 632 456#)

To comment on an item, press *5 to raise hand and *6 to unmute when prompted.

28. ESTABLISH – SPEED TABLES (2 speed tables)

Sotelo Avenue, between 9th Avenue and Santa Rita Avenue

(Supervisor District 7) (Approvable by the City Traffic Engineer) John Garzee,
john.garzee@sfmta.com



Conference Line: **1-415-523-2709** (conference ID: 836 632 456#)

To comment on an item, press *5 to raise hand and *6 to unmute when prompted.

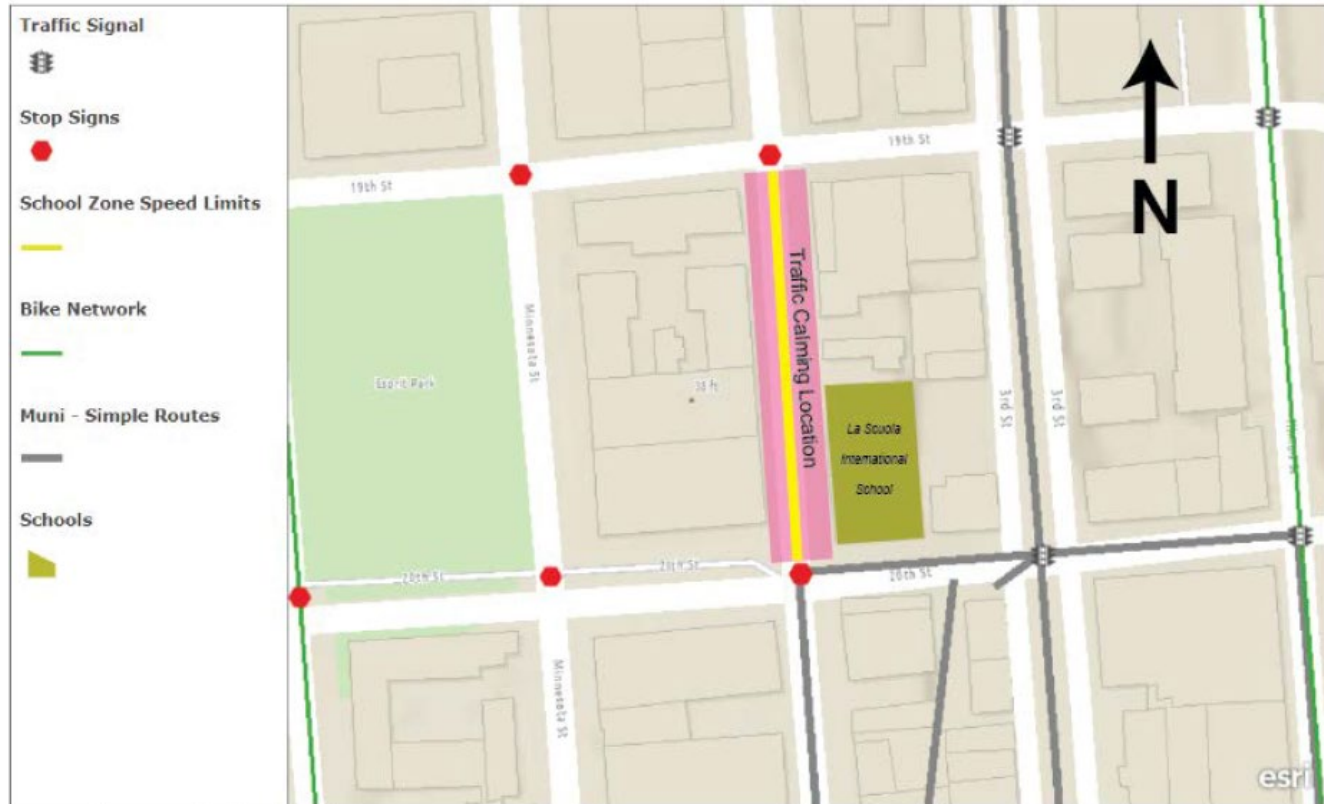
29. ESTABLISH – SPEED CUSHIONS (2 3-lump cushions)

Tennessee Street, between 19th Street and 20th Street

(Supervisor District 10) (Approvable by the City Traffic Engineer) John Garzee,

john.garzee@sfmta.com

Tennessee Street, between 19th Street and 20th Street



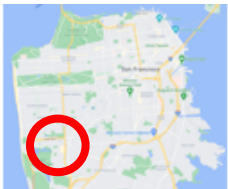
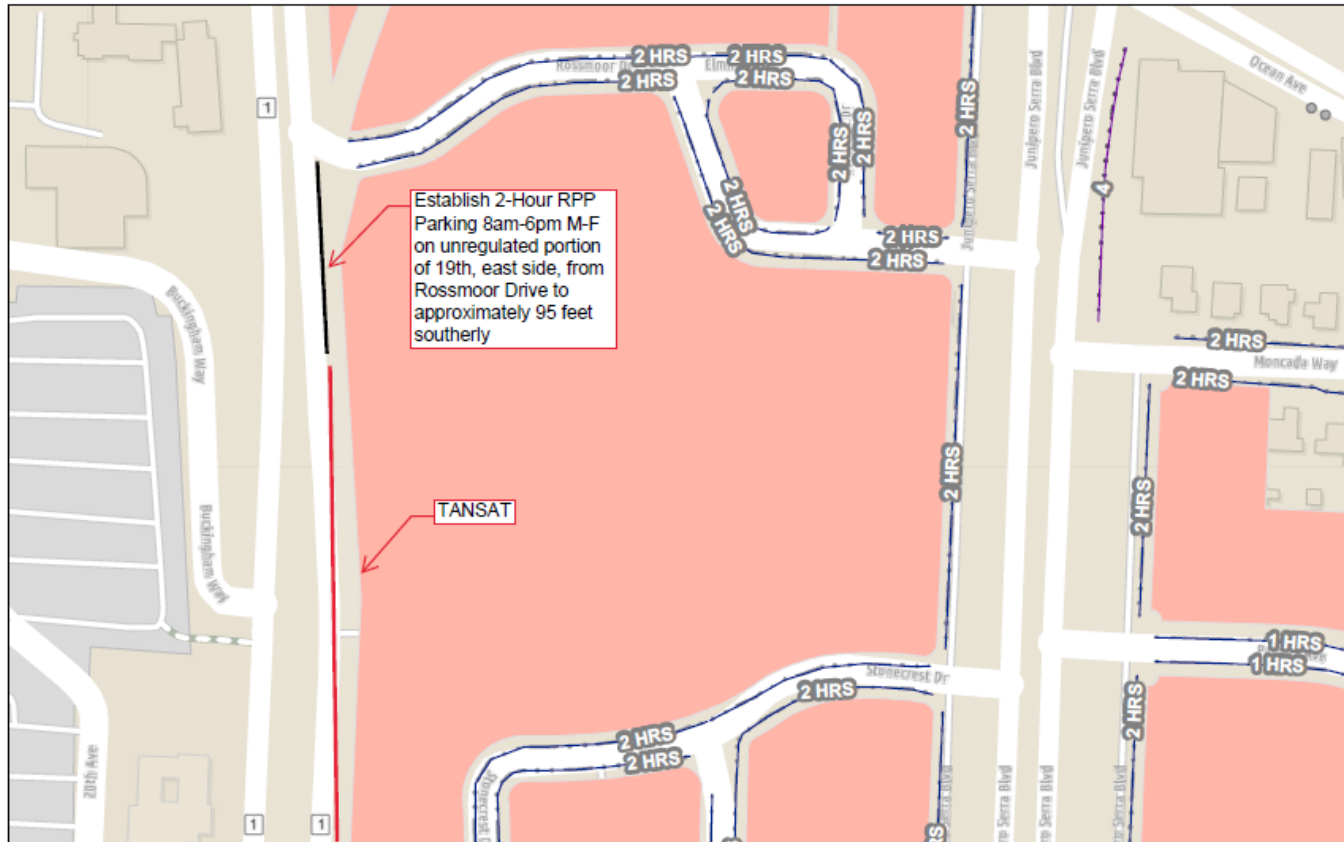
Conference Line: **1-415-523-2709** (conference ID: 836 632 456#)

To comment on an item, press *5 to raise hand and *6 to unmute when prompted.

30. ESTABLISH – RESIDENTIAL PERMIT PARKING AREA H

ESTABLISH – 2-HOUR PARKING, 8 AM TO 6 PM, MONDAY THROUGH FRIDAY, EXCEPT FOR VEHICLES WITH AREA H PERMITS

19th Avenue, east side, from Rossmoor Drive to 95 feet southerly (Supervisor District 7) (Requires approval by the SFMTA Board) Lulu Brien, lulu.brien@sfmta.com



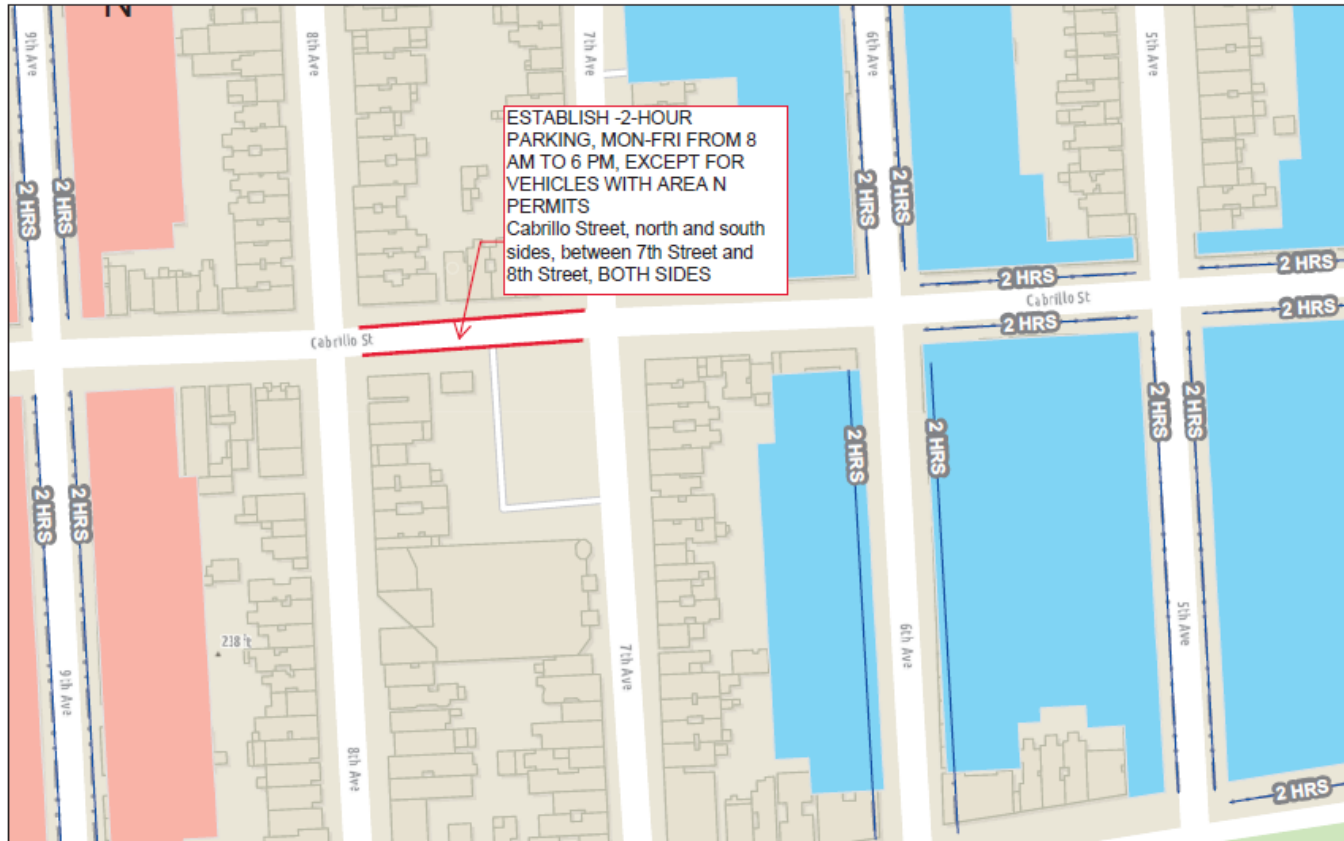
Conference Line: **1-415-523-2709** (conference ID: 836 632 456#)

To comment on an item, press *5 to raise hand and *6 to unmute when prompted.

31. ESTABLISH – RESIDENTIAL PERMIT PARKING AREA N

ESTABLISH – 2-HOUR PARKING, 8 AM TO 6 PM, MONDAY THROUGH FRIDAY, EXCEPT FOR VEHICLES WITH AREA N PERMITS

Cabrillo Street, north and south sides, between 7th Street and 8th Street (Supervisor District 1)
(Requires approval by the SFMTA Board) Lulu Brien, lulu.brien@sfmta.com



Conference Line: **1-415-523-2709** (conference ID: 836 632 456#)

To comment on an item, press *5 to raise hand and *6 to unmute when prompted.

32(a). ESTABLISH – PARATRANSIT, TAXI, AND COMMERCIAL LOADING ONLY, 30-MINUTE TIME LIMIT, AT ALL TIMES

- A. Market Street, south side, from 170 feet to 269 feet east of 8th Street
- B. Market Street, south side, from 78 feet to 171 feet east of 7th Street
- C. Market Street, north side, from 147 feet to 284 feet east of Jones Street
- D. Market Street, south side, from 295 feet to 402 feet west of 6th Street
- E. Market Street, north side, from 163 feet to 236 feet east of Taylor Street
- F. Market Street, south side, from 151 feet to 280 feet east of 6th Street
- G. Market Street, south side, from 326 feet to 418 feet west of 5th Street

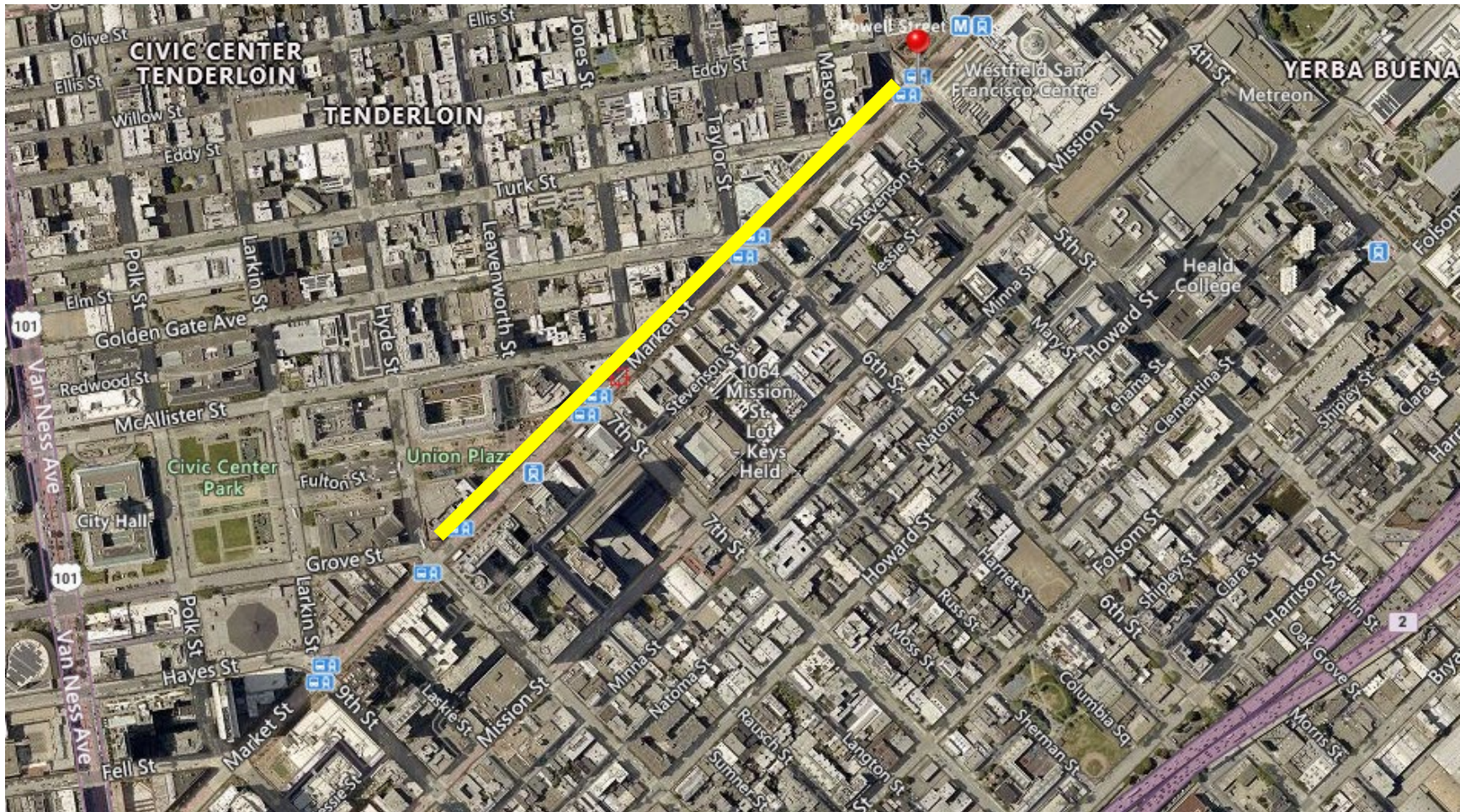
32(b). ESTABLISH – PARATRANSIT, TAXI, AND COMMERCIAL LOADING ONLY, 30-MINUTE TIME LIMIT, 7 AM TO 3 PM, MONDAY THROUGH SATURDAY; PARATRANSIT AND TAXI LOADING ONLY, AT ALL OTHER TIMES

Market Street, north side, from 172 feet to 268 feet east of Hyde Street (Districts 5 & 6) Michael Tamin, michael.tamin@sfmta.com



Conference Line: **1-415-523-2709** (conference ID: 836 632 456#)

To comment on an item, press *5 to raise hand and *6 to unmute when prompted.



Conference Line: **1-415-523-2709** (conference ID: 836 632 456#)

To comment on an item, press *5 to raise hand and *6 to unmute when prompted.

33(a). ESTABLISH - ONE WAY STREET

Zoe Street, northbound, between Brannan Street and Bryant Street

33(b). ESTABLISH – RPP AREA U

A. Freelon Street, both sides, from 4th Street to Zoe Street

B. Welsh Street, both sides, from 4th Street to Zoe Street

C. Zoe Street, both sides, from Bryant Street to Brannan Street

33(c). ESTABLISH – GENERAL METERED PARKING, NO TIME LIMIT, 9 AM TO 10 PM MONDAY THROUGH SATURDAY, EXCEPT VEHICLES WITH AREA U PERMITS

A. Freelon Street, north side, from 4th Street to Zoe Street

B. Welsh Street, north side, from 4th Street to Zoe Street

C. Zoe Street, east side, from Bryant Street to Brannan Street

33(d). ESTABLISH – YELLOW METERED PARKING, COMMERCIAL LOADING, 30-MINUTE TIME LIMIT, 9AM TO 6PM, MONDAY THROUGH SATURDAY

Welsh Street, north side, from 20 feet to 45 feet west of Zoe Street

33(e). ESTABLISH – RED ZONE

A. Freelon Street, north side, from Zoe Street to 35 feet westerly (removes two parking spaces for daylighting and truck turning clearance)

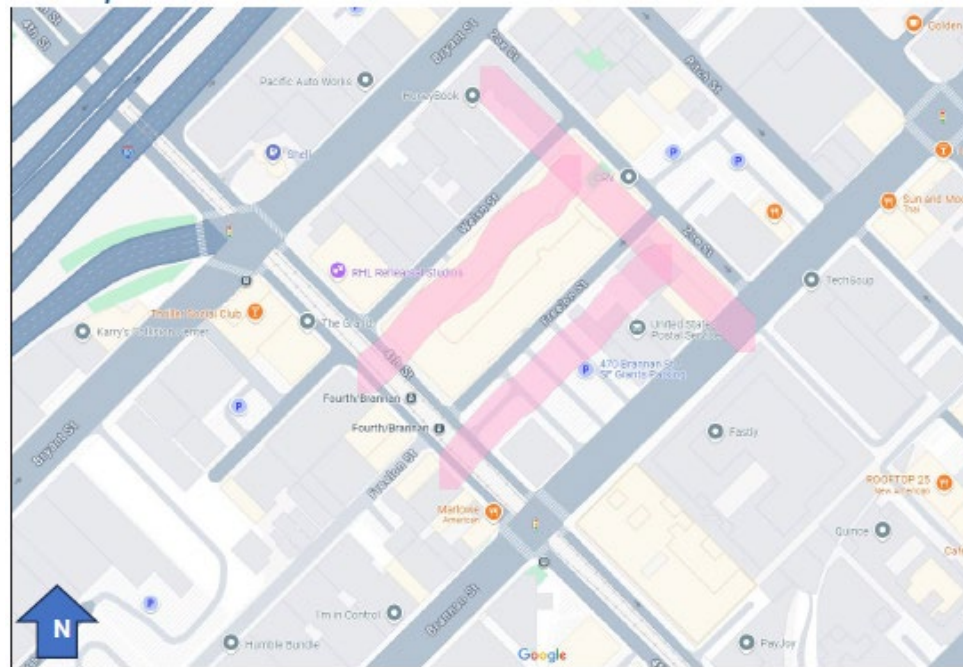
B. Freelon Street, north side, from 163 feet to 223 feet east of 4th Street (removes three parking spaces for truck turning clearance)



Conference Line: **1-415-523-2709** (conference ID: 836 632 456#)

To comment on an item, press *5 to raise hand and *6 to unmute when prompted.

- C. Welsh Street, north side, from 4th Street to 20 feet easterly (removes one parking space for daylighting)
- D. Welsh Street, north side, from Zoe Street to 20 feet westerly (extends existing 14-foot red zone for truck turning clearance)
- E. Zoe Street, east side, from 159 feet to 242 feet north of Brannan Street (removes three parking spaces for truck turning clearance) (Supervisor District 6) (Requires approval by the SFMTA Board) Dustin White, dustin.white@sfmta.com



Conference Line: **1-415-523-2709** (conference ID: 836 632 456#)
To comment on an item, press *5 to raise hand and *6 to unmute when prompted.

34(a). RESCIND – METERED YELLOW ZONE, COMMERCIAL LOADING, 30-MINUTE LIMIT, 7AM TO 6PM, MONDAY THROUGH SATURDAY

“20” Grove Street, north side, from 32 feet to 72 feet west of Hyde Street, at metered stall no. 10 and 12 (40-foot zone) [Under Directive Order No. 6695, this legislation was never installed]

34(b). ESTABLISH – DUAL USE ZONE: METERED YELLOW ZONE, COMMERCIAL LOADING, 30-MINUTE LIMIT, 7AM TO 6 PM, MONDAY THROUGH SATURDAY; GENERAL LOADING ZONE, 5-MINUTE LIMIT, ALL OTHER TIMES

“20” Grove Street, north side, from 32 feet to 72 feet west of Hyde Street, at metered stall no. 10 and 12 (40-foot zone)

34(c). RESCIND – TAXI STAND

11 Grove Street, south side, from 69 feet to 91 feet west of Hyde Street (22-foot zone)

34(d). RESCIND – DUAL-USE ZONE: METERED YELLOW ZONE, COMMERCIAL LOADING, 30-MINUTE LIMIT, 7AM TO 6PM, MONDAY THROUGH SATURDAY; WHITE ZONE, PASSENGER LOADING, 5-MINUTE LIMIT, ALL OTHER TIMES

11 Grove Street, south side, from 91 feet to 179 feet west of Hyde Street at metered stall numbers 7, 9, 13, and 15 (88-foot zone)

[Under Directive Order No. 6695, this legislation was never installed. Note, the Directive Order No. 6695 indicated incorrect length and meter numbers. Should indicate Grove Street, south side, from 91 feet to 223 feet west of Hyde Street at metered stall numbers 13, 15, 17, 19 (132-foot zone)]



Conference Line: **1-415-523-2709** (conference ID: 836 632 456#)

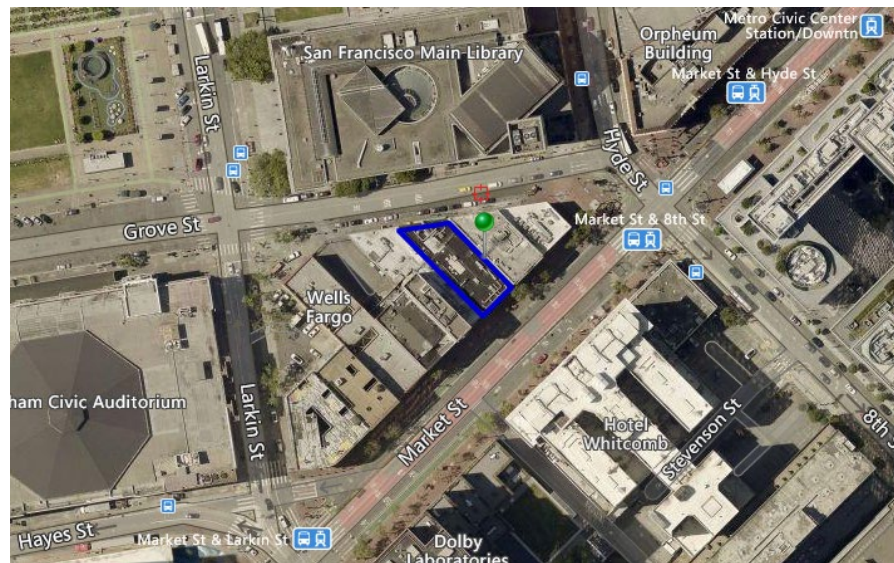
To comment on an item, press *5 to raise hand and *6 to unmute when prompted.

34(e). ESTABLISH – DUAL-USE ZONE: METERED YELLOW ZONE, COMMERCIAL LOADING, 30-MINUTE LIMIT, 7AM TO NOON, MONDAY THROUGH SATURDAY; GENERAL LOADING ZONE, 5-MINUTE LIMIT, ALL OTHER TIMES

11 Grove Street, south side, from 69 feet to 223 feet west of Hyde Street at metered stall numbers 13, 15, 17, 19 (154-foot zone)

(District Supervisor 6) (Approvable by the City Traffic Engineer) Andrienne Mau,
Adrienne.Mau@sfmta.com

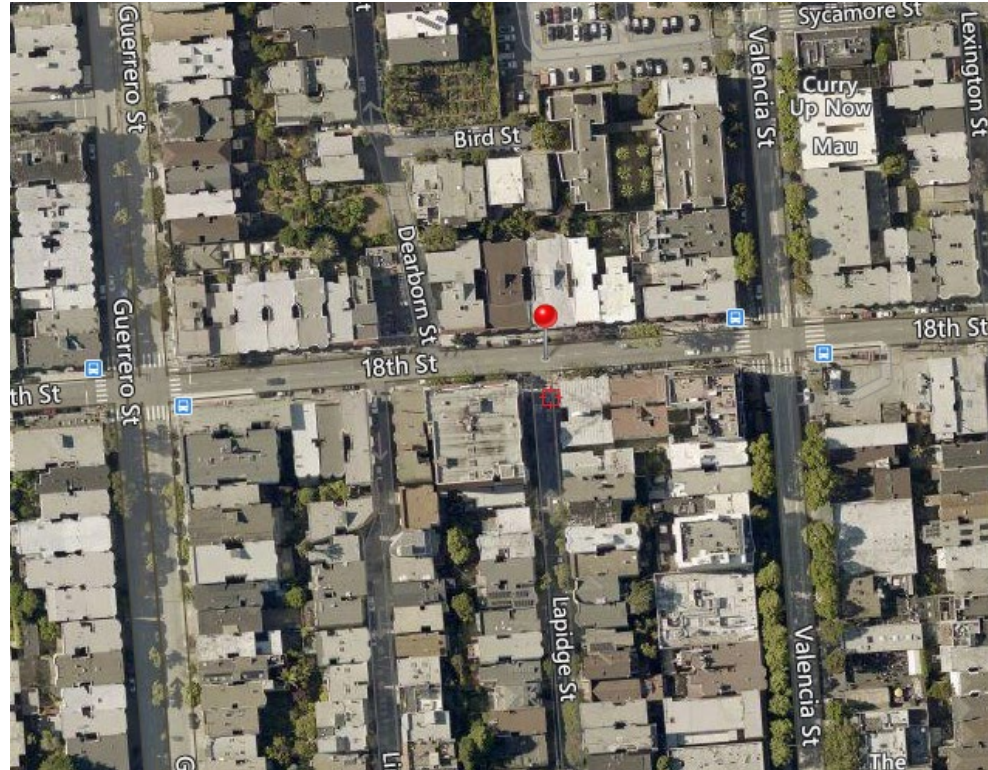
Requested curb regulation changes to support Mid-Market Food Hall delivery and pick needs while retaining commercial loading opportunities for Sams American Eatery and Fermentation Lab restaurants.



Conference Line: **1-415-523-2709** (conference ID: 836 632 456#)

To comment on an item, press *5 to raise hand and *6 to unmute when prompted.

35(a). RESCIND – TOW-AWAY, NO STOPPING, EXCEPT PERMITTED CAR SHARE
Lapidge Street, east side, from 18th Street to 18 feet southerly
ESTABLISH – TOW-AWAY, NO STOPPING, EXCEPT PERMITTED CAR SHARE
Lapidge Street, east side, from 10 to 27 feet south of 18th Street
ESTABLISH – RED ZONE
Lapidge Street, east side, from 18th Street to 10 feet southerly

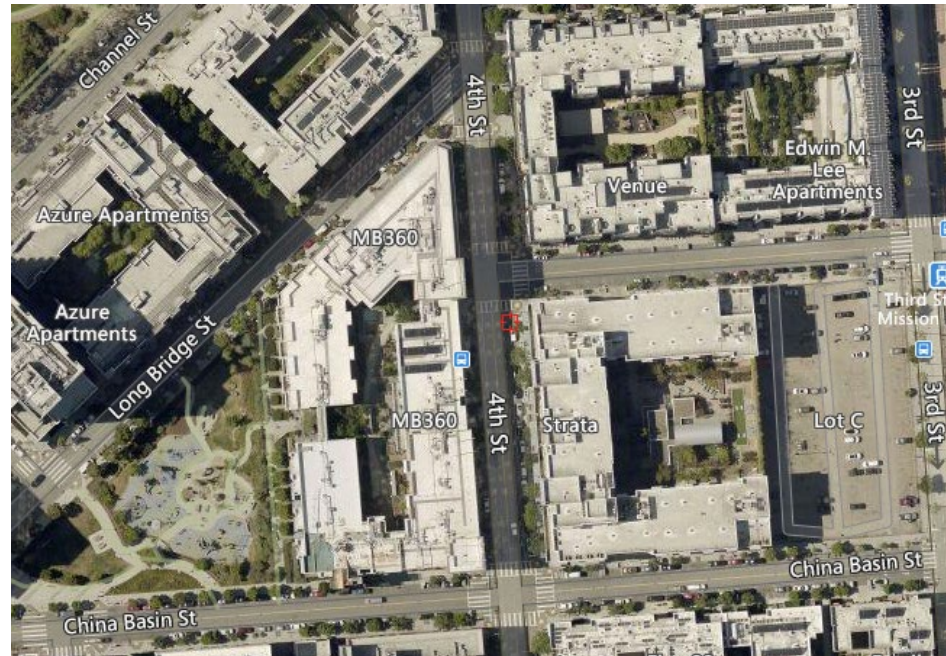


Conference Line: **1-415-523-2709** (conference ID: 836 632 456#)
To comment on an item, press *5 to raise hand and *6 to unmute when prompted.

35(b). RESCIND – TOW-AWAY, NO STOPPING, EXCEPT PERMITTED CAR SHARE
4th Street, east side, from 15 feet to 35 feet south of Mission Rock Street (20-foot zone at Post ID #204-12010)

ESTABLISH – TOW-AWAY, NO STOPPING, EXCEPT PERMITTED CAR SHARE
4th Street, east side, from 35 feet to 55 feet south of Mission Rock Street (20-foot zone removes Post ID #204-12030)

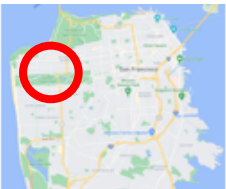
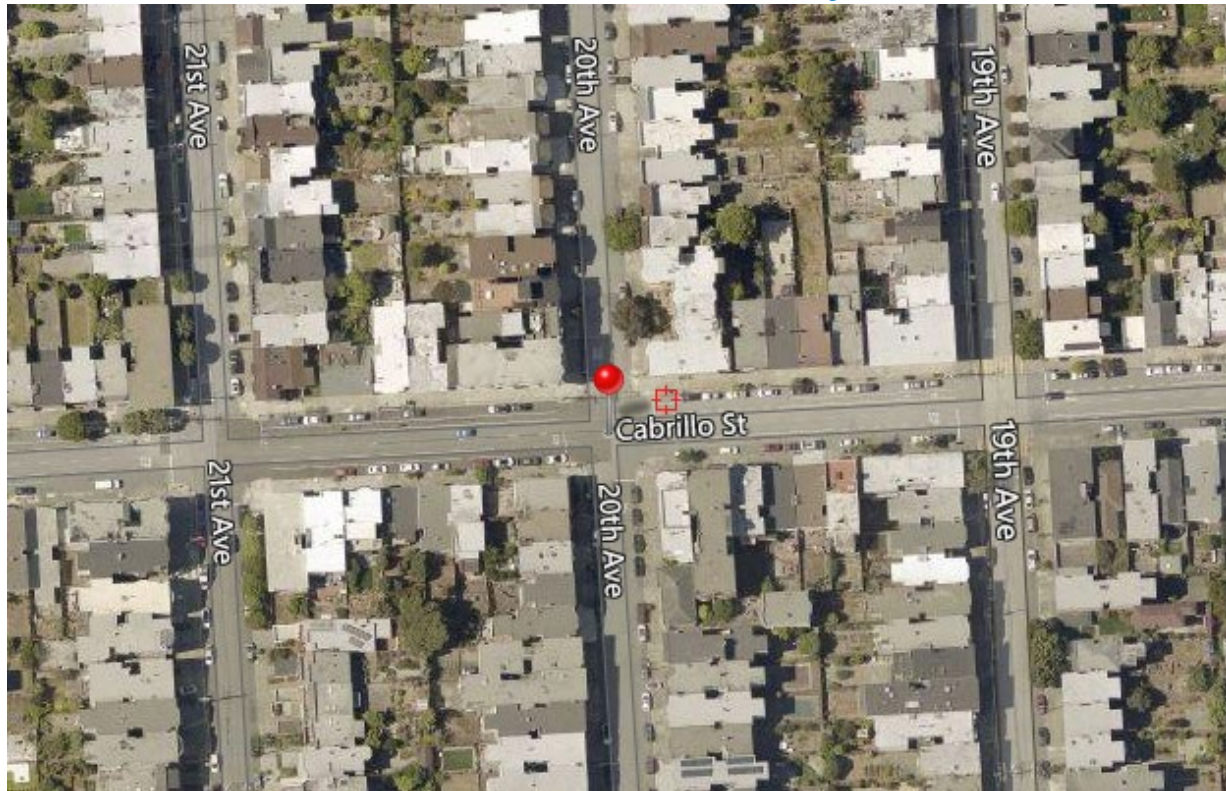
ESTABLISH – RED ZONE
4th Street, east side, from 15 feet to 35 feet south of Mission Rock Street (20-foot zone at Post ID #204-12010)



Conference Line: **1-415-523-2709** (conference ID: 836 632 456#)

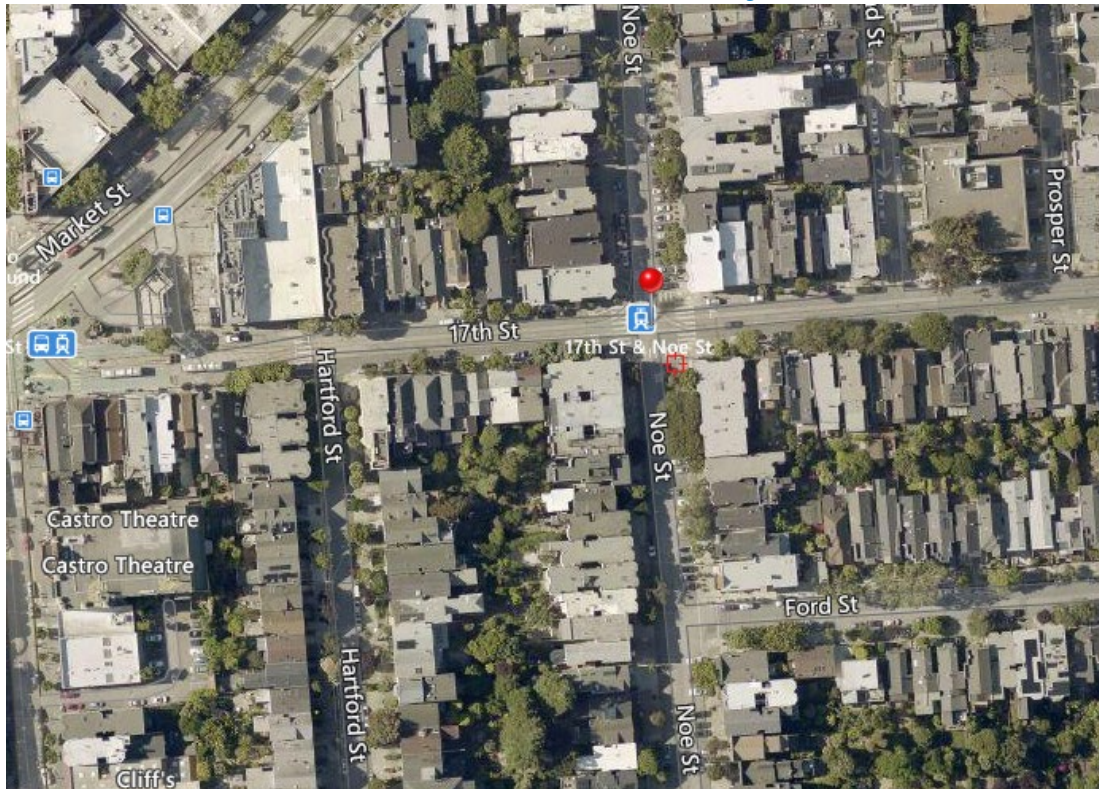
To comment on an item, press *5 to raise hand and *6 to unmute when prompted.

35(c). RESCIND – TOW-AWAY, NO STOPPING, EXCEPT PERMITTED CAR SHARE
Cabrillo Street, north side, from 20th Avenue to 20 feet easterly
ESTABLISH – TOW-AWAY, NO STOPPING, EXCEPT PERMITTED CAR SHARE
Cabrillo Street, north side, from 10 to 28 feet east of 20th Avenue
ESTABLISH – RED ZONE
Cabrillo Street, north side, from 20th Avenue to 10 feet easterly



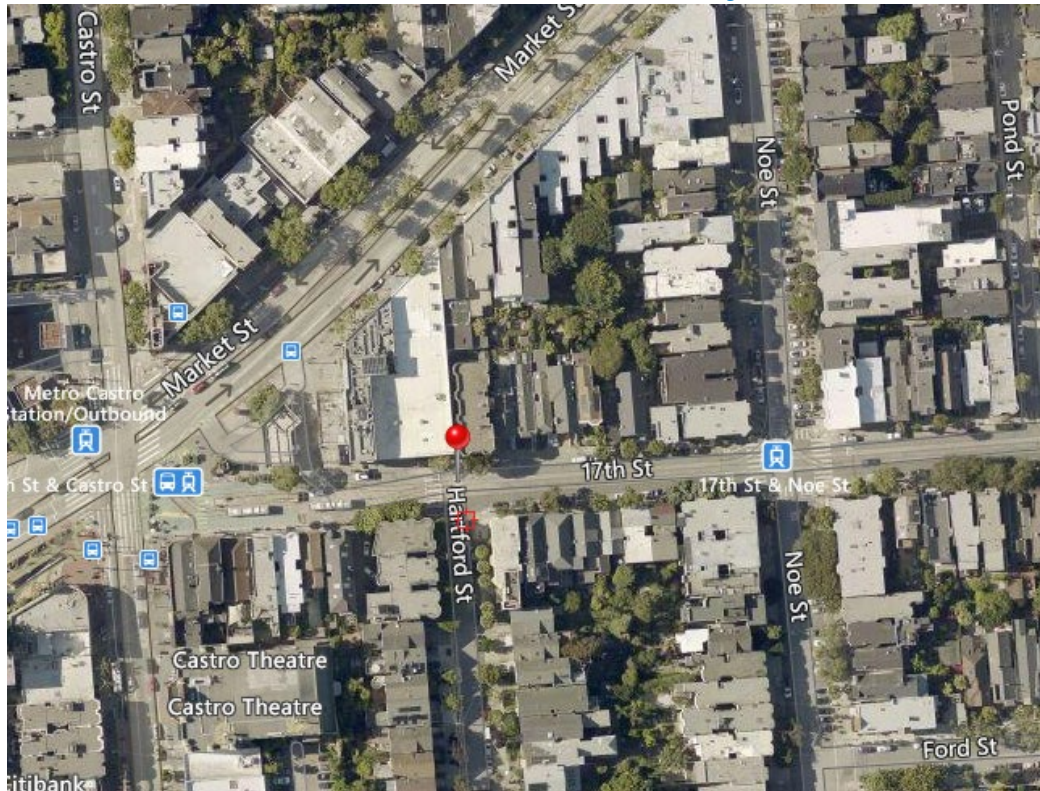
Conference Line: **1-415-523-2709** (conference ID: 836 632 456#)
To comment on an item, press *5 to raise hand and *6 to unmute when prompted.

35(d). RESCIND – TOW-AWAY, NO STOPPING, EXCEPT PERMITTED CAR SHARE
Noe Street, east side, from 17th Street to 16 feet southerly
ESTABLISH – TOW-AWAY, NO STOPPING, EXCEPT PERMITTED CAR SHARE
Noe Street, east side, from 40 to 56 feet south of 17th Street
ESTABLISH – RED ZONE
Noe Street, east side, from 17th Street to 15 feet southerly



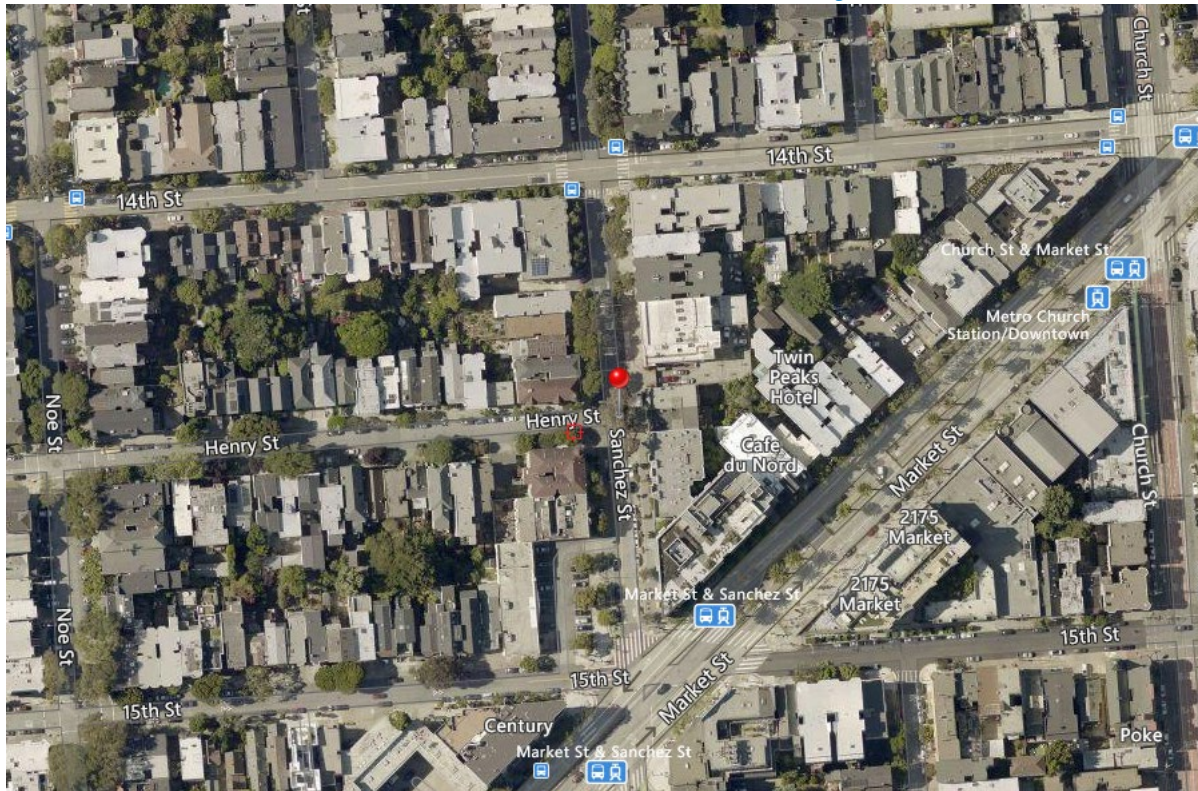
Conference Line: **1-415-523-2709** (conference ID: 836 632 456#)
To comment on an item, press *5 to raise hand and *6 to unmute when prompted.

35(e). RESCIND – TOW-AWAY, NO STOPPING, EXCEPT PERMITTED CAR SHARE
Hartford Street, east side, from 2 feet to 20 feet south of 17th Street
ESTABLISH – TOW-AWAY, NO STOPPING, EXCEPT PERMITTED CAR SHARE
Hartford Street, east side, from 10 feet to 28 feet south of 17th Street
ESTABLISH – RED ZONE
Hartford Street, east side, from 17th Street to 10 feet southerly



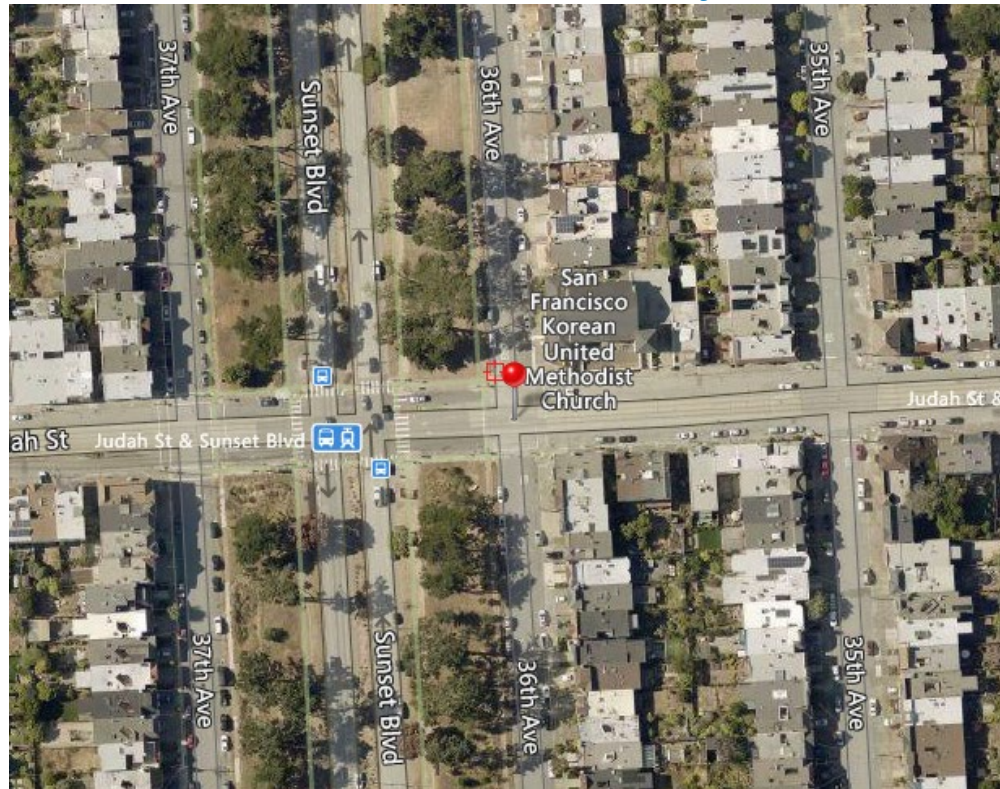
Conference Line: **1-415-523-2709** (conference ID: 836 632 456#)
To comment on an item, press *5 to raise hand and *6 to unmute when prompted.

35(f). RESCIND – TOW-AWAY, NO STOPPING, EXCEPT PERMITTED CAR SHARE
Henry Street, south side, from 3 feet to 40 feet west of Sanchez Street
ESTABLISH – TOW-AWAY, NO STOPPING, EXCEPT PERMITTED CAR SHARE
Henry Street, south side, from 10 feet to 46 feet west of Sanchez Street
ESTABLISH – RED ZONE
Henry Street, south side, from Sanchez Street to 10 feet westerly



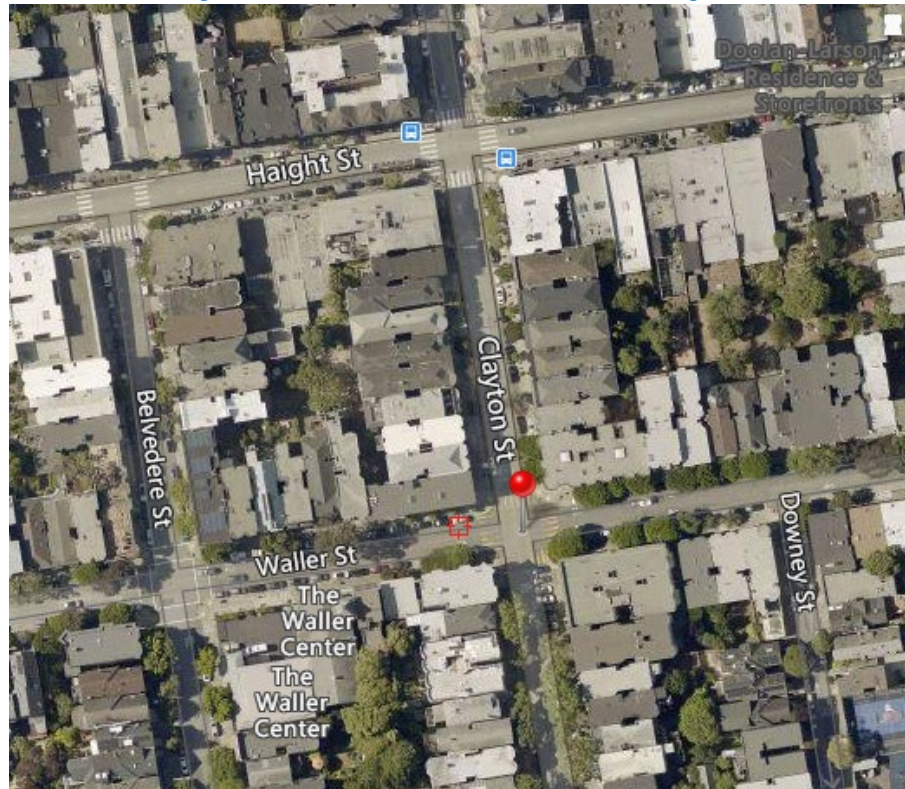
Conference Line: **1-415-523-2709** (conference ID: 836 632 456#)
To comment on an item, press *5 to raise hand and *6 to unmute when prompted.

35(g). RESCIND – TOW-AWAY, NO STOPPING, EXCEPT PERMITTED CAR SHARE
36th Avenue, west side, from Judah Street to 21 feet northerly
ESTABLISH – TOW-AWAY, NO STOPPING, EXCEPT PERMITTED CAR SHARE
36th Avenue, west side, from 10 feet to 28 feet north of Judah Street
ESTABLISH – RED ZONE
36th Avenue, west side, from Judah Street to 10 feet northerly



Conference Line: **1-415-523-2709** (conference ID: 836 632 456#)
To comment on an item, press *5 to raise hand and *6 to unmute when prompted.

35(h). RESCIND – TOW-AWAY, NO STOPPING, EXCEPT PERMITTED CAR SHARE
Waller Street, north side, from Clayton Street 20 feet westerly
ESTABLISH – TOW-AWAY, NO STOPPING, EXCEPT PERMITTED CAR SHARE
Waller Street, north side, from 10 to 28 feet west of Clayton Street
ESTABLISH – RED ZONE
Waller Street, north side, from Clayton Street to 10 feet westerly



Conference Line: **1-415-523-2709** (conference ID: 836 632 456#)
To comment on an item, press *5 to raise hand and *6 to unmute when prompted.

35(i). RESCIND – TOW-AWAY, NO STOPPING, EXCEPT PERMITTED CAR SHARE

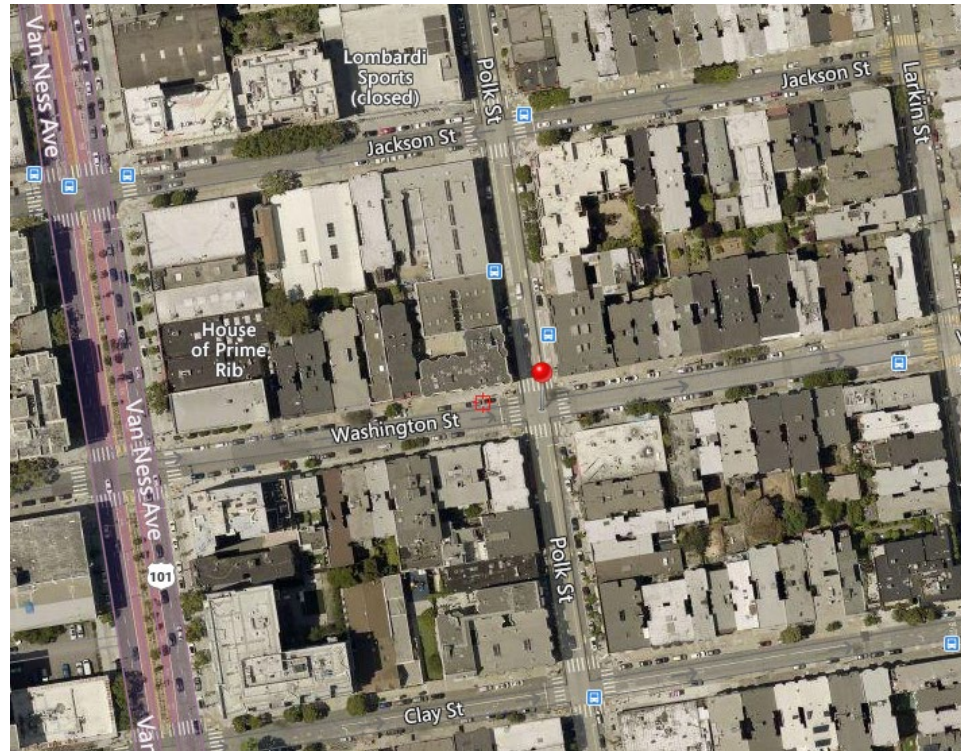
Washington Street, north side, from 10 feet to 34 feet west of Polk Street

ESTABLISH – TOW-AWAY, NO STOPPING, EXCEPT PERMITTED CAR SHARE

Washington Street, north side, from 74 feet to 93 feet west of Polk Street (19-foot zone removes Post ID #720-17100)

ESTABLISH – RED ZONE

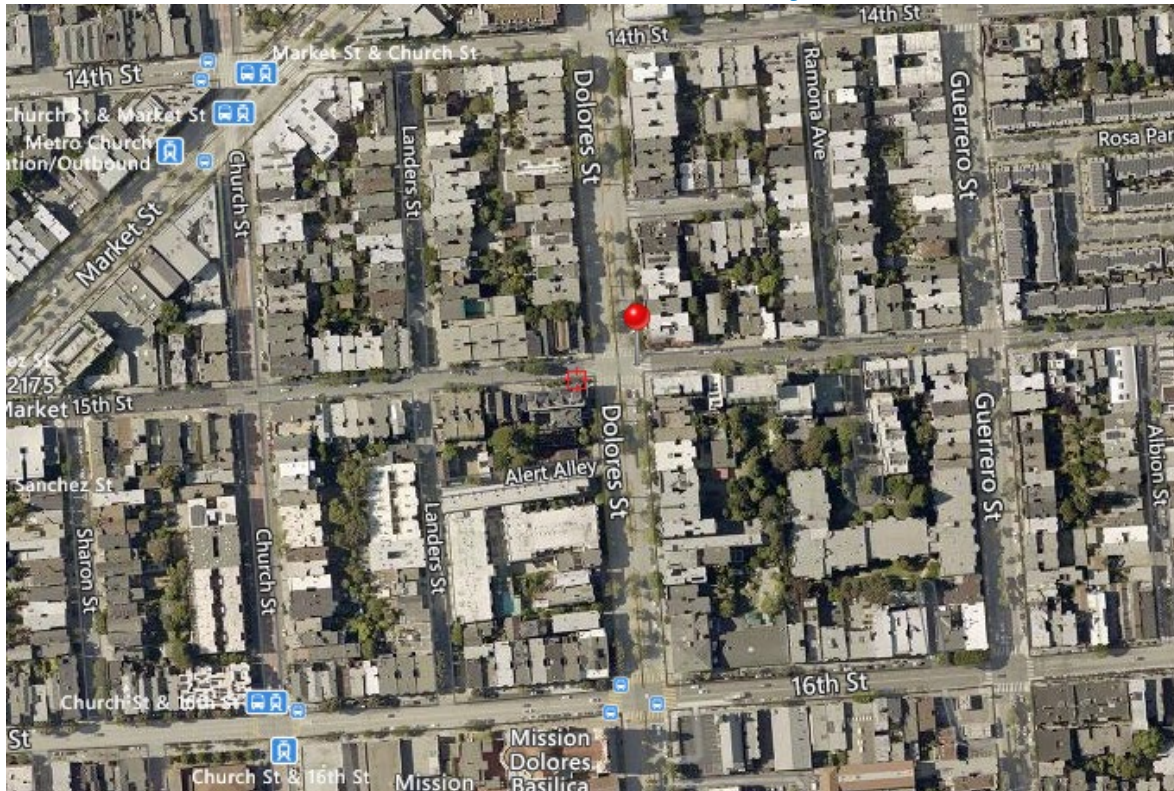
Washington Street, north side, from 10 feet to 34 feet west of Polk Street



Conference Line: **1-415-523-2709** (conference ID: 836 632 456#)

To comment on an item, press *5 to raise hand and *6 to unmute when prompted.

35(j). RESCIND – TOW-AWAY, NO STOPPING, EXCEPT PERMITTED CAR SHARE
15th Street, south side, from Dolores Street to 38 feet westerly
ESTABLISH – TOW-AWAY, NO STOPPING, EXCEPT PERMITTED CAR SHARE
15th Street, south side, from 20 to 56 feet west of Dolores Street
ESTABLISH – RED ZONE
15th Street, south side, from Dolores Street to 20 feet westerly



Conference Line: **1-415-523-2709** (conference ID: 836 632 456#)
To comment on an item, press *5 to raise hand and *6 to unmute when prompted.

35(k). RESCIND – TOW-AWAY, NO STOPPING, EXCEPT PERMITTED CAR SHARE

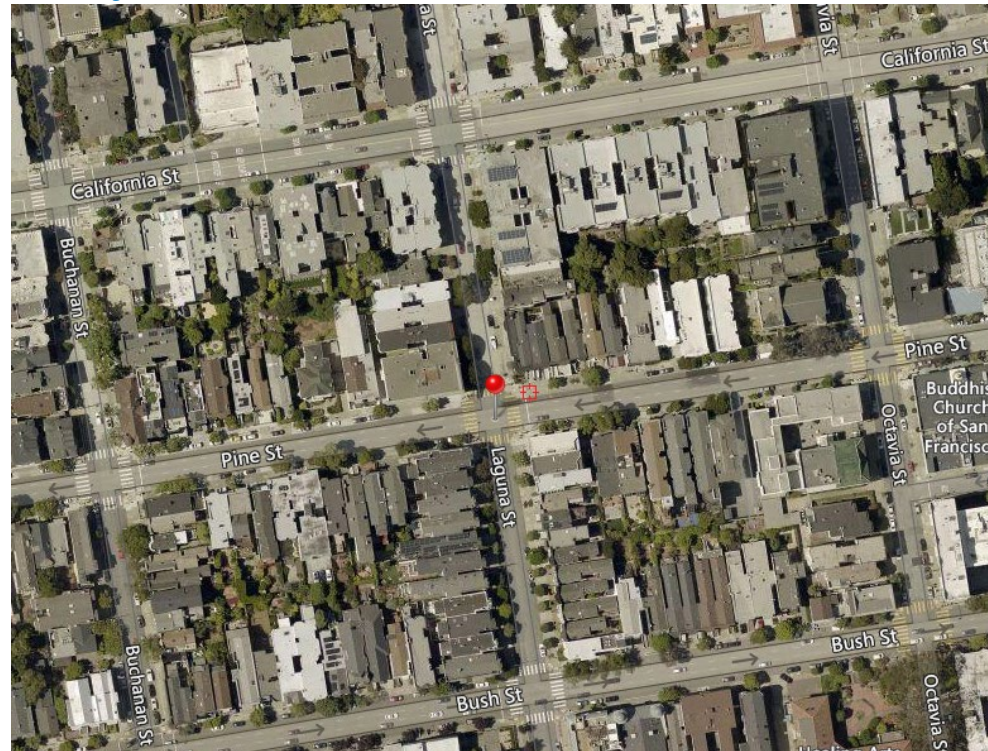
Pine Street, north side, from Laguna Street to 20 feet easterly

ESTABLISH – TOW-AWAY, NO STOPPING, EXCEPT PERMITTED CAR SHARE

Pine Street, south side, from 20 to 38 feet east of Laguna Street

ESTABLISH – RED ZONE

Pine Street, north side, from Laguna Street to 20 feet easterly Pine Street, south side, from Laguna Street to 20 feet easterly



Conference Line: **1-415-523-2709** (conference ID: 836 632 456#)

To comment on an item, press *5 to raise hand and *6 to unmute when prompted.

35(I). RESCIND – TOW-AWAY, NO STOPPING, EXCEPT PERMITTED CAR SHARE

Hayes Street, north side, from Baker Street to 35 feet easterly

ESTABLISH – TOW-AWAY, NO STOPPING, EXCEPT PERMITTED CAR SHARE

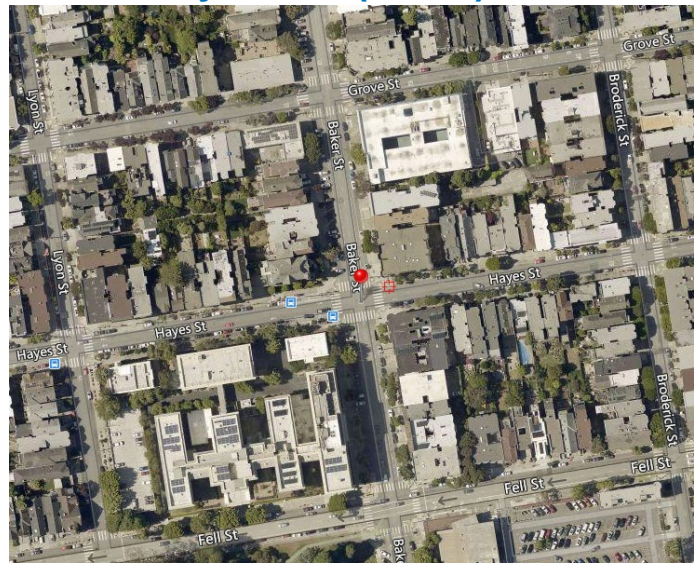
Hayes Street, south side, from Baker Street to 35 feet easterly

ESTABLISH – RED ZONE

Hayes Street, north side, from Baker Street to 20 feet easterly

(Supervisor Districts 1, 3, 4, 5, 6, 8, & 9) (Requires approval by the SFMTA Board) Andy Thornley,
andy.thornley@sfmta.com

Proposal to rescind and re-establish existing on-street car share parking spaces to insert proper intersection daylighting, per Assembly Bill 413 (AB413).



Conference Line: **1-415-523-2709** (conference ID: 836 632 456#)

To comment on an item, press *5 to raise hand and *6 to unmute when prompted.

36. ESTABLISH – NO PARKING ANYTIME EXCEPT BICYCLES

Scott Street, east side, from Haight Street to 19 feet southerly (for 9 9-foot corral and red zones).
(Supervisor District 5) (Approvable by the City Traffic Engineer) Grant Brokl,
Grant.Brokl@sfmta.com

This proposal would establish an on-street bicycle corral in an existing general unmetered parking space at 190 Scott Street.



Conference Line: **1-415-523-2709** (conference ID: 836 632 456#)
To comment on an item, press *5 to raise hand and *6 to unmute when prompted.

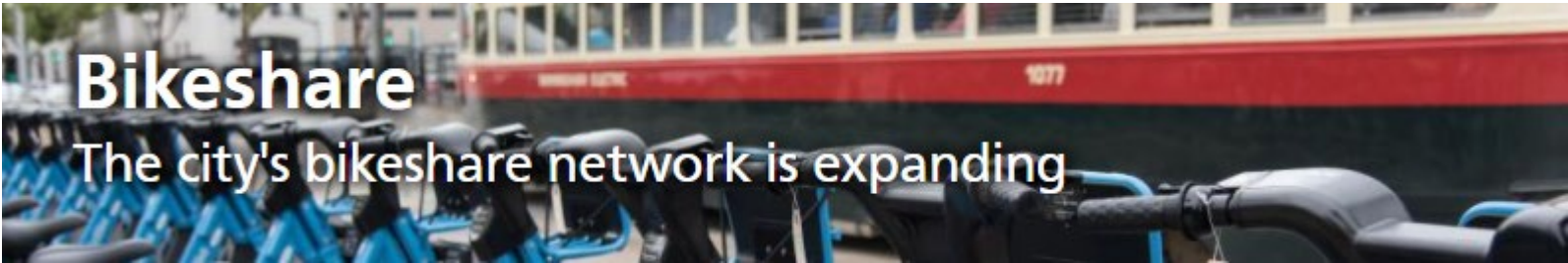
37. ESTABLISH – NO PARKING ANY TIME, EXCEPT BICYCLES

Shotwell Street, east side, from 20th Street to 24 feet southerly (for 17-foot corral and red zones)
(Supervisor District 9) (Approvable by the City Traffic Engineer) Grant Brokl,
grant.brokl@sfmta.com

Proposal to establish an on-street bicycle corral in an existing general unmetered parking space at
591 Shotwell Street.



Conference Line: **1-415-523-2709** (conference ID: 836 632 456#)
To comment on an item, press *5 to raise hand and *6 to unmute when prompted.



sfmta.com/bikeshare

Shortcut!

Google

sfmta.com/bikeshare

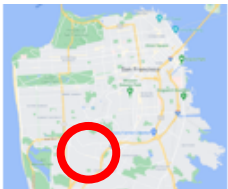
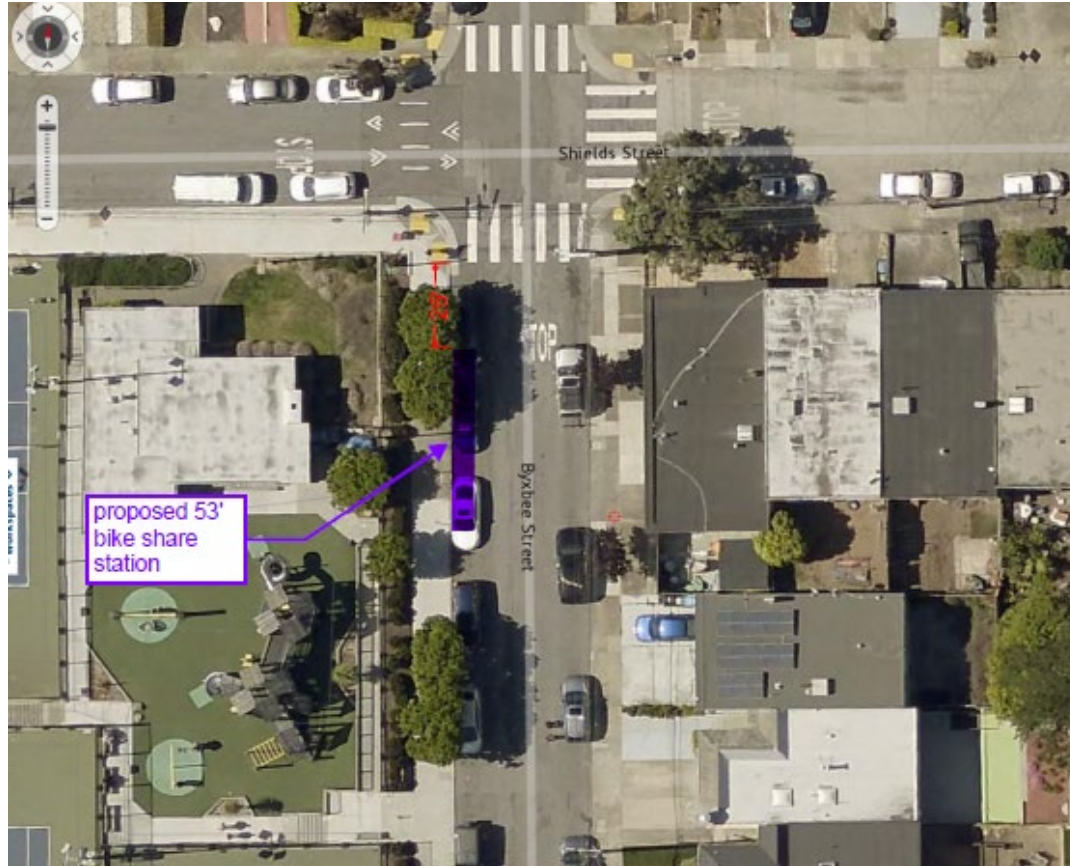
Quick Links

[Overview](#) | [Equity](#) | [Bikeshare's Purpose](#) | [System Planning and Station Siting](#) | [Bay Area Bike Share Pilot](#) | [Stationless Bikeshare](#) | [Bikeshare Data](#)

38. ESTABLISH – NO STOPPING, EXCEPT BICYCLES

ESTABLISH – BIKE SHARE STATION

**Byxbee Street, west side, from 25 feet to 78 feet south of Shields Street (53-foot station)
(Supervisor District 11) (Approvable by the City Traffic Engineer) bikeshare@sfmta.com**



Conference Line: **1-415-523-2709** (conference ID: 836 632 456#)

To comment on an item, press *5 to raise hand and *6 to unmute when prompted.

39. ESTABLISH – NO STOPPING, EXCEPT BICYCLES

ESTABLISH – BIKE SHARE STATION

**Lobos Street, north side, from 23 feet to 86 feet west of Plymouth Avenue (63-foot station)
(Supervisor District 11) (Approvable by the City Traffic Engineer) bikeshare@sfmta.com**



Conference Line: **1-415-523-2709** (conference ID: 836 632 456#)

To comment on an item, press *5 to raise hand and *6 to unmute when prompted.

**40. ESTABLISH – NO STOPPING, EXCEPT BICYCLES
ESTABLISH – BIKE SHARE STATION**

**Lakeview Avenue, south side, from 5 feet to 68 feet west of San Jose Avenue (63-foot station)
(Supervisor District 11) (Approvable by the City Traffic Engineer) bikeshare@sfmta.com**



Conference Line: **1-415-523-2709** (conference ID: 836 632 456#)
To comment on an item, press *5 to raise hand and *6 to unmute when prompted.

**41. ESTABLISH – NO STOPPING, EXCEPT BICYCLES
ESTABLISH – BIKE SHARE STATION**

**Jules Avenue, west side, from 5 feet to 37 feet south of Ocean Avenue (32-foot station)
(Supervisor District 11) (Approvable by the City Traffic Engineer) bikeshare@sfmta.com**



Conference Line: **1-415-523-2709** (conference ID: 836 632 456#)
To comment on an item, press *5 to raise hand and *6 to unmute when prompted.

**42. ESTABLISH – NO STOPPING, EXCEPT BICYCLES
ESTABLISH – BIKE SHARE STATION**

**Ashton Avenue, east side, from 5 feet to 44 feet north of Holloway Avenue (39-foot station)
(Supervisor District 11) (Approvable by the City Traffic Engineer) bikeshare@sfmta.com**



Conference Line: **1-415-523-2709** (conference ID: 836 632 456#)
To comment on an item, press *5 to raise hand and *6 to unmute when prompted.

**43. ESTABLISH – NO STOPPING, EXCEPT BICYCLES
ESTABLISH – BIKE SHARE STATION**

**Miramar Avenue, east side, from 5 feet to 48 feet south of Holloway Avenue (43-foot station)
(Supervisor District 11) (Approvable by the City Traffic Engineer) bikeshare@sfmta.com**



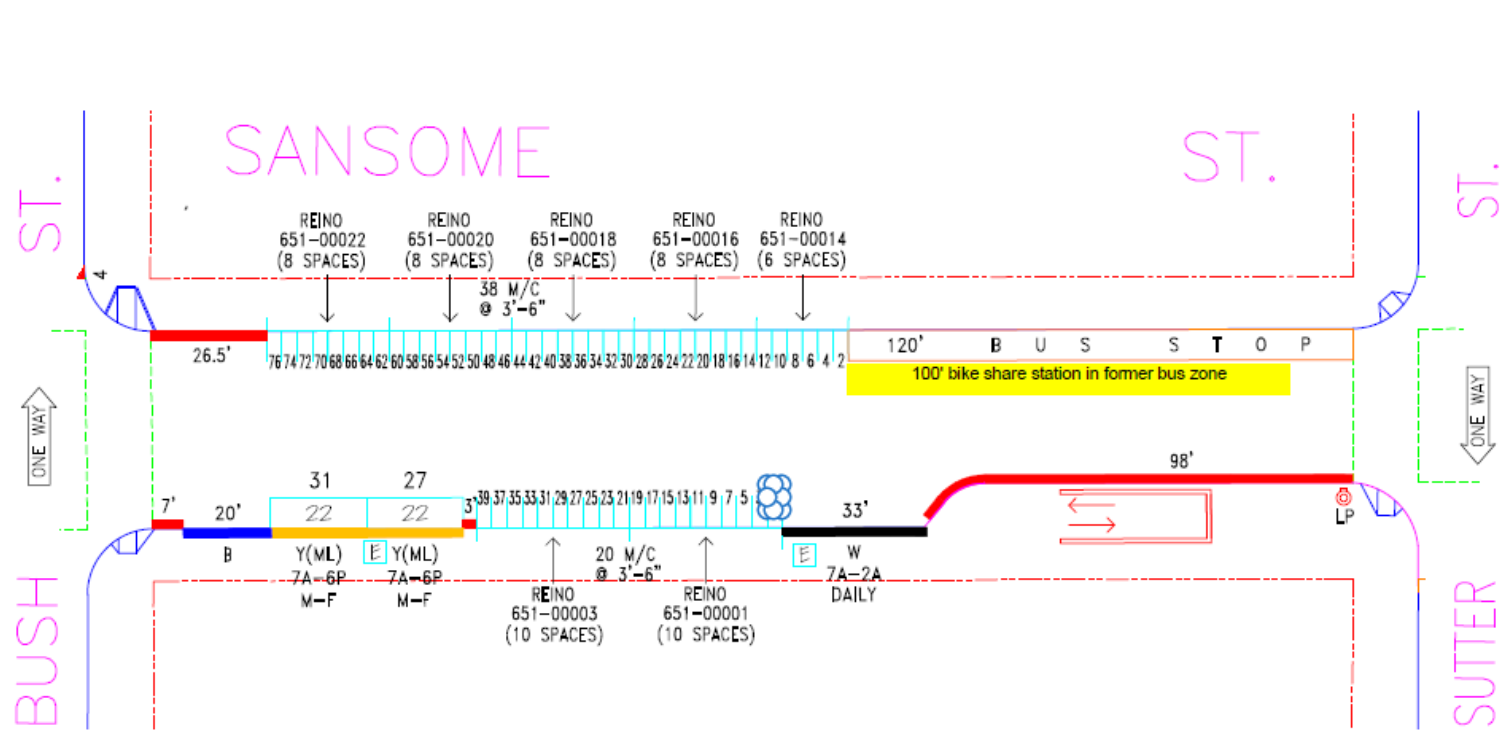
Conference Line: **1-415-523-2709** (conference ID: 836 632 456#)
To comment on an item, press *5 to raise hand and *6 to unmute when prompted.

44. ESTABLISH – NO STOPPING, EXCEPT BICYCLES

ESTABLISH – BIKE SHARE STATION

Sansome Street, east side, from 20 feet to 120 feet north of Sutter Street (Supervisor District 3)

(Approvable by the City Traffic Engineer) bikeshare@sfmta.com



Conference Line: **1-415-523-2709** (conference ID: 836 632 456#)

To comment on an item, press *5 to raise hand and *6 to unmute when prompted.

45(a). ESTABLISH - RECTANGULAR RAPID FLASHING BEACONS (RRFB)
Sickles Avenue and Sears Street

45(b). ESTABLISH - SIDEWALK EXTENSION

- A. Huron Avenue, east side, from Sickles Avenue to 20 feet southerly (21 foot wide sidewalk)
- B. Sickles Avenue, south side, from Huron Avenue to 20 feet easterly (18 foot wide sidewalk)
- C. Sickles Avenue, north side, from Mission Street to 28 feet westerly (17 foot wide sidewalk)
- D. Sickles Avenue, south side, from Mission Street to 18 feet westerly (17 foot wide sidewalk)

45(c). ESTABLISH - RED ZONE

- A. Sickles Avenue, north side, from 18 feet west of Cayuga Avenue to 36 feet westerly Cayuga Avenue, east side, from Sickles Avenue to 20 feet northerly
- B. Cayuga Avenue, west side, from Sickles Avenue to 20 feet southerly
- C. Sears Street, east side, from Sickles Avenue to 20 feet northerly
- D. Sears Street, west side, from Sickles Avenue to 20 feet southerly
- E. Huron Avenue, east side, from Sickles Avenue to 20 feet northerly
- F. Huron Avenue, west side, from Sickles Avenue to 20 feet southerly
- G. Huron Avenue, east side, from Sickles Avenue to 20 feet southerly
- H. Sickles Avenue, north side, from 9 feet east of Huron Avenue to 30 feet easterly

(District Supervisor 11) (Approvable by the City Traffic Engineer) Shahram Shariati,
Shahram.Shariati@sfmta.com

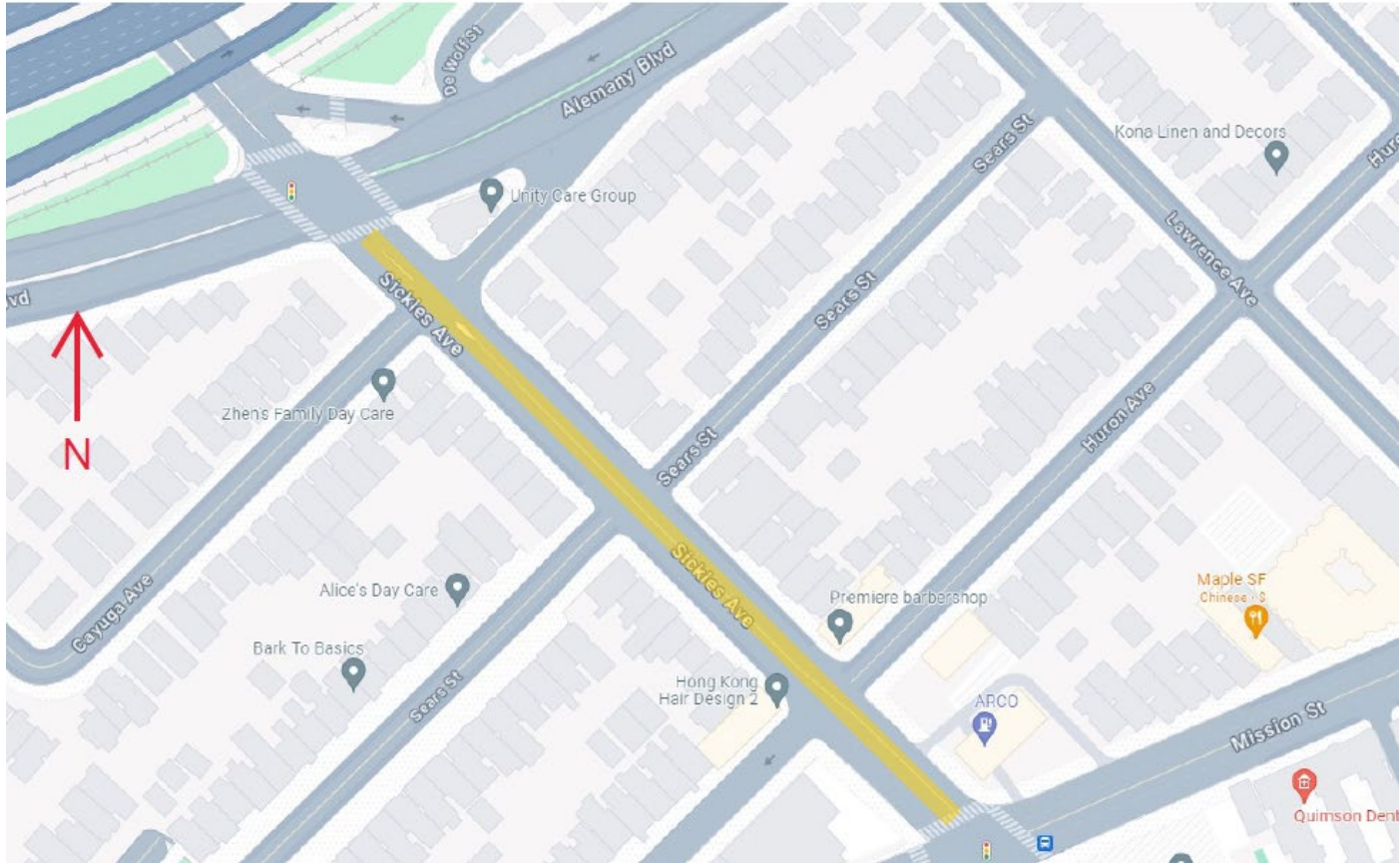


Conference Line: **1-415-523-2709** (conference ID: 836 632 456#)

To comment on an item, press *5 to raise hand and *6 to unmute when prompted.

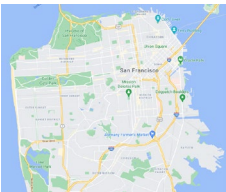
Proposal to install traffic calming improvements such as rectangular rapid flashing beacons (RRFBs), concrete median, daylighting, warning signs, and accessible pedestrian signal (APS) push buttons are encompassed in this project.

PROJECT MAP BOUNDARY



Conference Line: **1-415-523-2709** (conference ID: 836 632 456#)
To comment on an item, press *5 to raise hand and *6 to unmute when prompted.

PUBLIC COMMENT



Conference Line: **1-415-523-2709** (conference ID: 836 632 456#)
To comment on an item, press *5 to raise hand and *6 to unmute when prompted.

Public Hearing Decision Posting

Results will be posted by 5 PM next Friday

sfmta.com/engineering

Select Meeting
from List of Past
Meetings



Past Meetings & Events for this Committee

- May 19** **Engineering Public Hearing Meeting, May 19, 2023**
The Streets Division of the San Francisco Municipal Transportation Agency will hold an online...
- May 5** **Engineering Public Hearing Meeting, May 5, 2023**
The Streets Division of the San Francisco Municipal Transportation Agency will hold an online...
- Apr 21** **Engineering Public Hearing Meeting, April 21, 2023**
The Streets Division of the San Francisco Municipal Transportation Agency will hold an online...

[View all past Meetings & Events >](#)



SFMTA

Next Engineering Public Hearing January 17, 2025

<https://sfmta.com/enghearing>

Conference Line: 1-415-523-2709

Conference ID: 836 632 456#