



SFMTA

BUILDING PROGRESS

Potrero Yard Modernization Project

Project Delivery Procedure

**BOS Budget and Finance Committee
March 3, 2021**

BUILDING PROGRESS Program Overview

The SFMTA launched the **BUILDING PROGRESS program** in Fall 2017.

The Building Progress Program will:

- **Modernize aging SFMTA facilities** in order to meet the needs of everyone who travels in San Francisco;
- **Improve the transportation system's resiliency** to seismic events, climate change, technology changes; and
- **Make the SFMTA a better neighbor** in the parts of the city that currently host our facilities.

<https://www.sfmta.com/projects/building-progress-program>

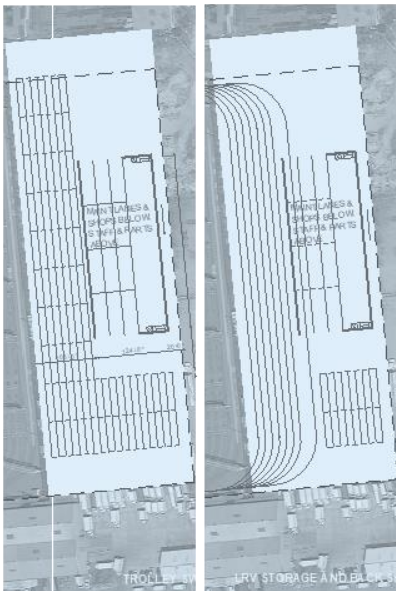
<https://www.sfmta.com/reports/2017-sfmta-facilities-framework>

BUILDING PROGRESS

Bus Yard Modernization Program

MME

Expand bus capacity during bus facility rebuilds, then convert to rail and shop uses



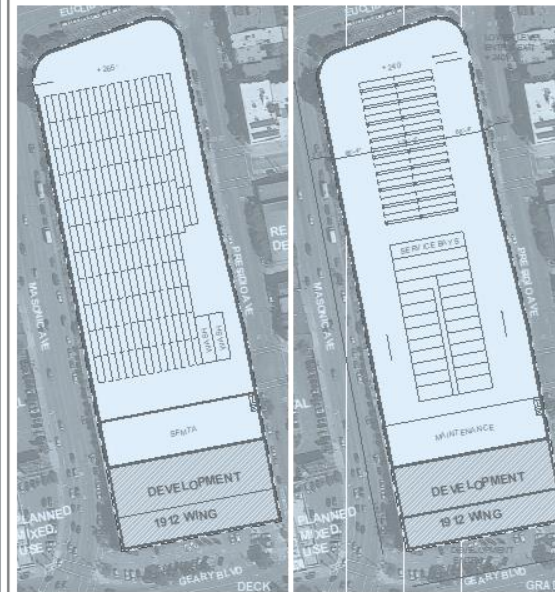
Potrero

Rebuild as multi-level trolley and BEB facility with private development above; support first e-buses



Presidio

Rebuild as multi-level trolley and BEB facility with private development adjacent; consider e-bus transition.



Kirkland (or Woods)

Rebuild as BEB facility (e-bus transition)



BUILDINGPROGRESS

Potrero Yard Modernization Project



A LOOK AT POTRERO YARD

Before COVID-19



102,000

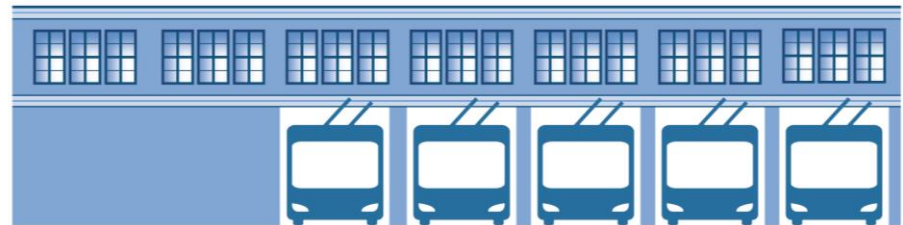
Muni riders rely on buses from Potrero Yard every day. (~14% of Muni riders)

Existing Facility

2	138	16	391
levels of transit	buses	bus bays	employees (245 operators)

Future Facility

3	213	17	829*
levels of transit	buses	bus bays	employees (383 operators)



Potrero Yard was built to serve 100 street cars. Today it serves 136 trolley buses for eight routes. In many of the maintenance bays the ceiling is too low to do roof repairs indoors or lift buses to repair them from below.



SFMTA

BUILDING PROGRESS

Potrero Yard Modernization Project

Core Transportation Objectives

Rebuild and modernize Potrero Yard **by 2026**

Provide infrastructure for **battery electric buses**

Improve **safety and working conditions** for the SFMTA workforce

Consolidate functions for **efficiencies** (Training + Street Operations)

Site/Housing Objectives

Enhance architecture and urban design

Enhance streetscape to ensure public safety and reduce conflicts

Maximize housing, including at least 50% affordable and up to 100% affordable

Commitment to:

A responsible public investment

Inclusive and transparent stakeholder engagement

Leadership in sustainability

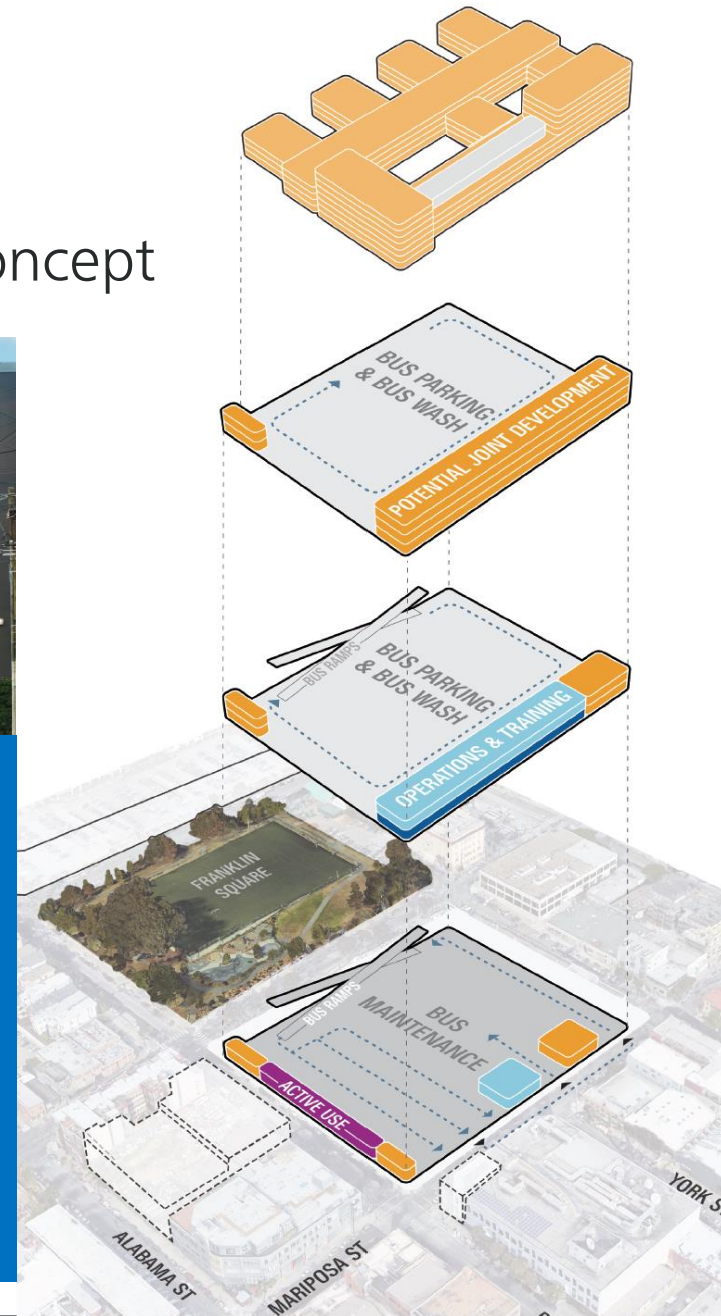
Potrero Yard Modernization Project

Extensive outreach informed the project concept



Potrero Yard Key Transit Operational Elements:

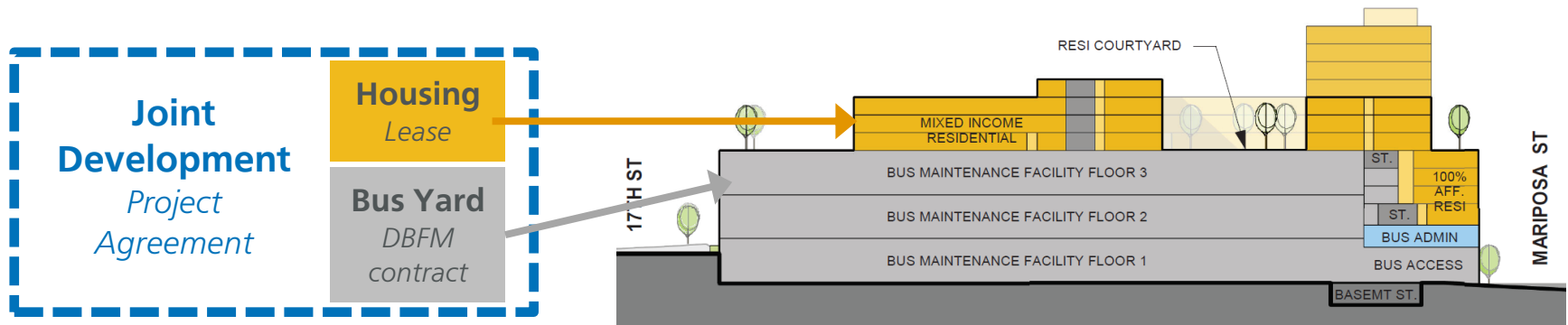
- Ramps for efficient on-site circulation
- Modern and sufficient bus lifts for vehicle fleet maintenance
- Modern bus wash bays ensuring a clean vehicle fleet
- Modern amenities for bus operators, maintenance and street ops
- Power upgrades allowing for transition to Zero Emission e-Bus
- Storage capability for growing Muni Fleet and Muni Service
- Dedicated and modern operator training facility



Potrero Yard Modernization Project

Joint-Development Project Delivery Model

- Joint development partner would design, build, and finance new facility and maintain common building elements
- Pursuing joint development for the bus facility and housing requires a new project delivery framework
- The Administrative Code does not include joint development model as a procurement option for City projects
- Other complex projects on City land (e.g. 49 S. Van Ness) have required enabling project delivery legislation like this



Potrero Yard Modernization Project

Key provisions of the legislation include:

- Allowing the SFMTA to make a “best value” selection that assesses both quality and cost
- Maintaining the Project’s obligation to essential City policies like local hire, prevailing wage, and an LBE program
- Allowing the project to issue a reimbursement to up to 2 unsuccessful bidding teams at the end of the RFP process to ensure competitive bids

Thank You. Questions?

Team:

Bonnie Jean von Krogh
Building Progress Public Affairs Manager
BonnieJean.vonKrogh@SFMTA.com

Jonathan Rewers
Building Progress Program Manager
Jonathan.Rewers@SFMTA.com

Licinia Iberri
Campus Planning Manager
Licinia.Iberri@SFMTA.com

Rafe Rabalais
Long-Range Asset Development Manager
Rafe.Rabalais@SFMTA.com

Get the latest project info in your inbox. Sign-up for updates at
sfmta.com/potreroyard