



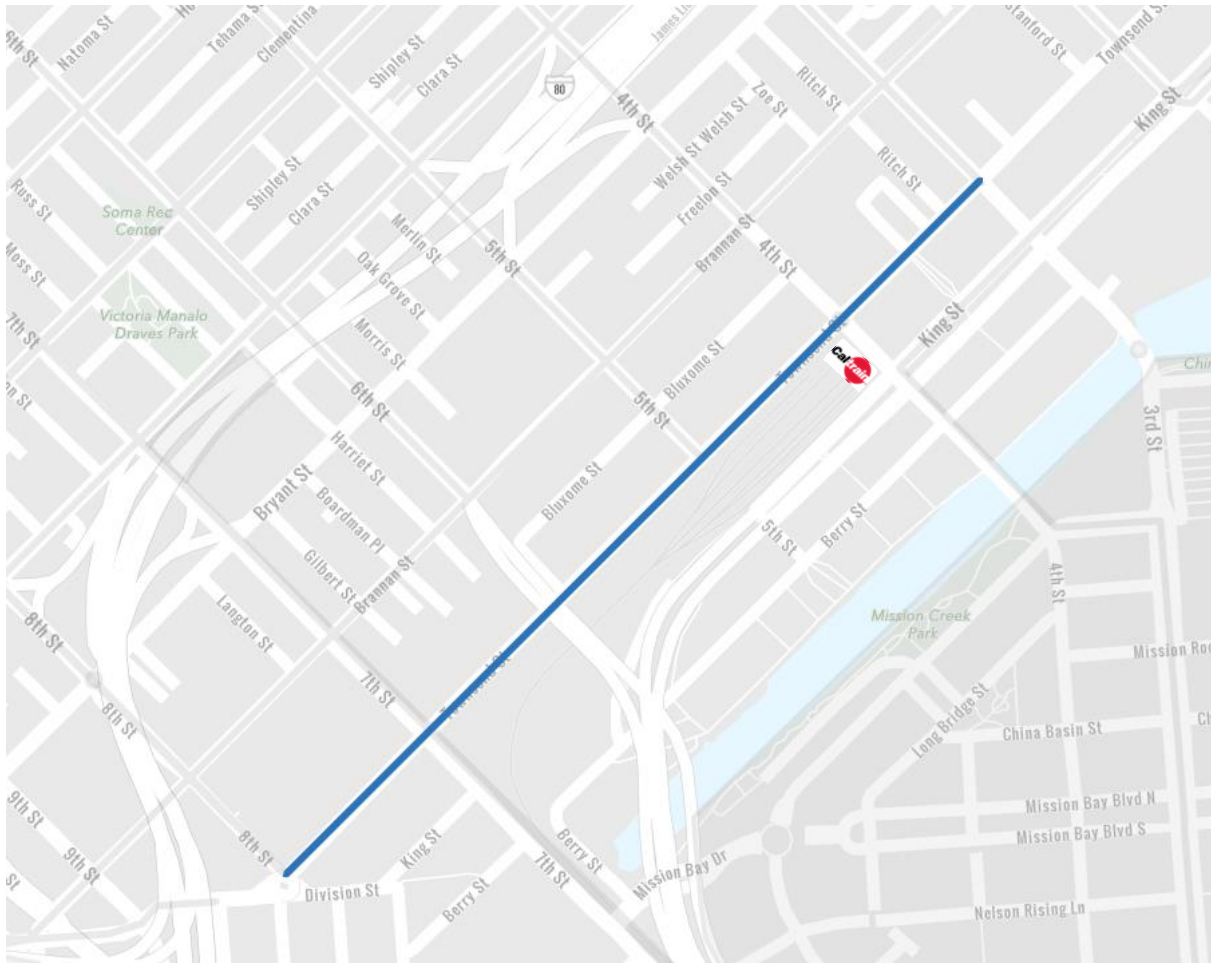
SFMTA

Townsend Corridor Improvement Project

Pedestrian Safety Advisory Committee
September 10, 2019

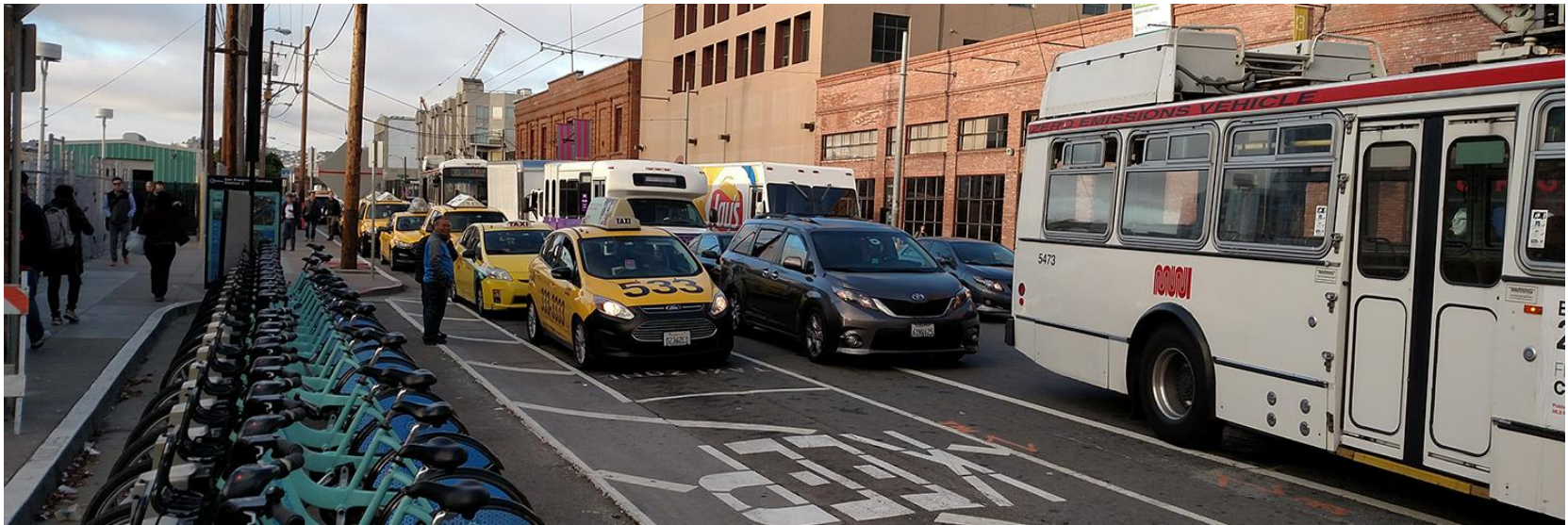
Jonathan Streeter, Public Relations Officer

Project Area



When complete, the project will transform Townsend Street from 3rd to 8th streets.

Project Goals

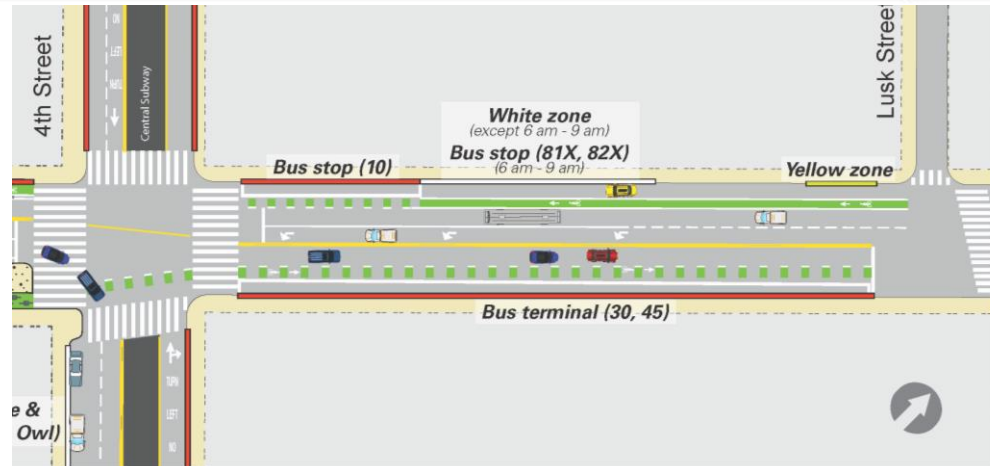
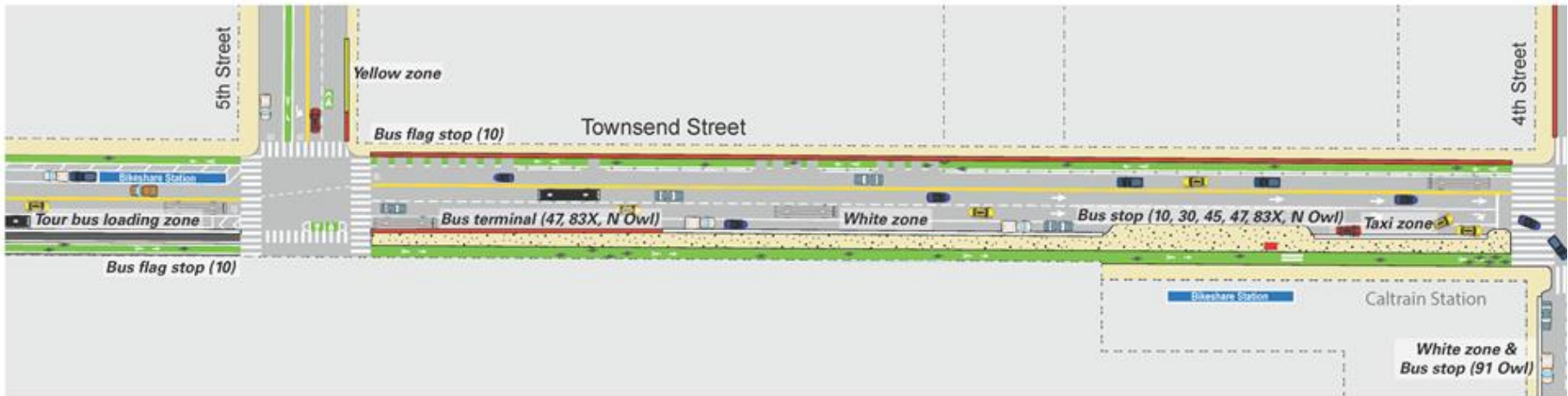


- Create a safer Townsend Street from 3rd to 8th streets for all roadway users
- Improve safety for people biking with protected bikeway
- Improve pedestrian access at all points on the corridor
- Improve Muni reliability and connection to Caltrain
- Create safe, intuitive, and accessible loading zones for all users of the Caltrain Station

Current Conditions

- Townsend Street from 3rd to 4th Streets is a part of the Vision Zero High Injury Network
- Over 2,000 bike riders per weekday at the Caltrain Station
- Over 3,600 pedestrians cross per hour at 4th Street and Townsend Street
- About 6,000 Muni customers are picked up and dropped off in the area of 4th and Townsend on bus routes that layover there as well
- Over 70% of SF Caltrain riders walk, bike or take transit to get to or from the train station
- On weekdays, more than 800 shared bicycle (Bay Wheels) trips start or end at Caltrain – 16% of all system wide daily trips.

Key Changes in the vicinity of Caltrain



Townsend at 5th Street



Townsend at Caltrain



Construction is underway



Construction Timeline

- November 6, 2018 SFMTA Board meeting approvals
- November 2018 Construction began between 5th and 7th Streets
- Summer 2019 Construction began between 3rd and 5th Streets
- Winter 2019 Construction estimated to begin between 7th and 8th Streets

Thank you!

Jonathan Streeter
Jonathan.Streeter@sfmta.com
415.646.2109

Project Webpage:
www.sfmta.com/townsend

