



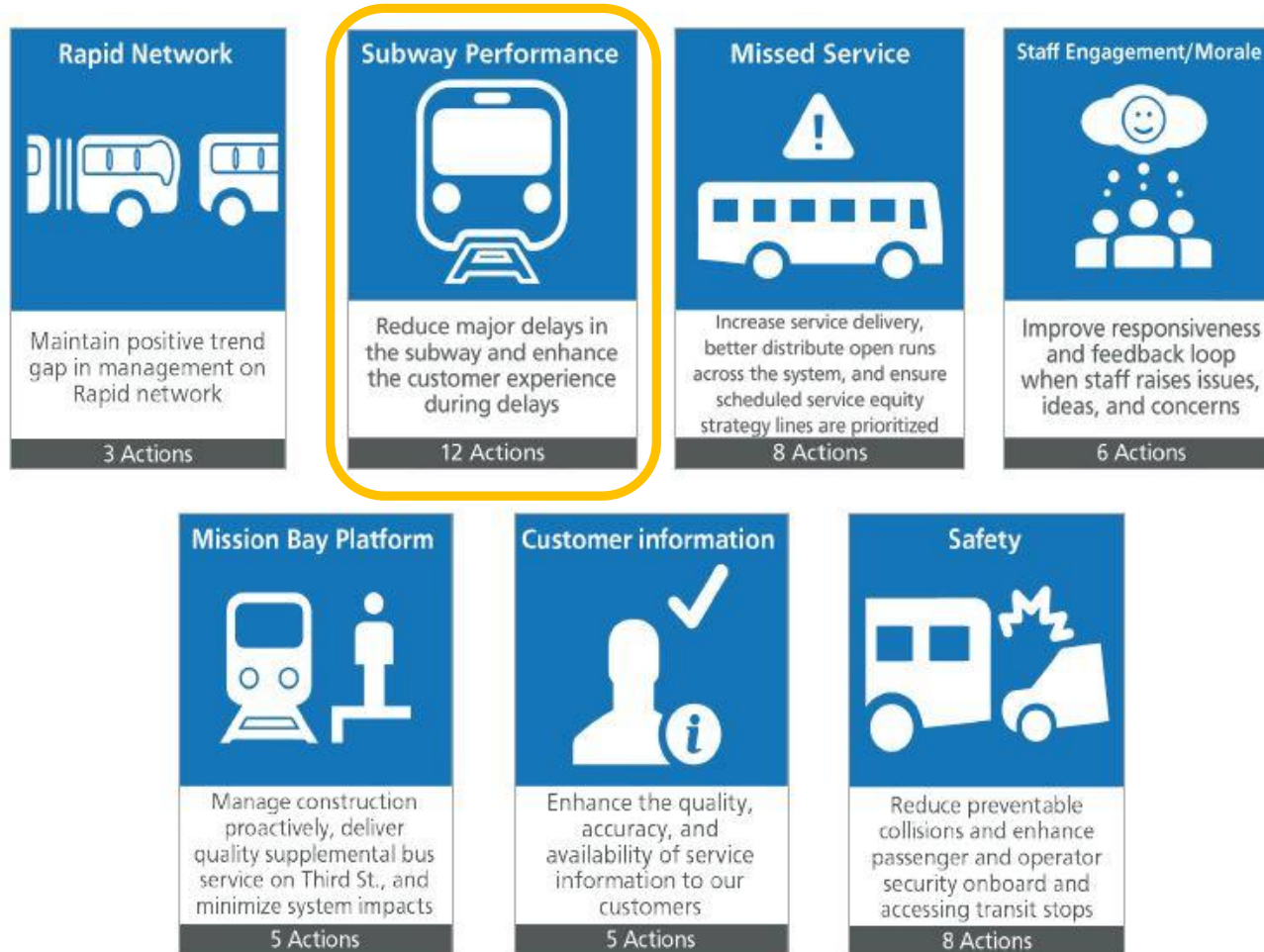
SFMTA

# West Portal Transit Delay Reduction Project



May 21, 2019

# Project context: Muni 90 Day Plan



# West Portal Station areas challenges

1. Three light-rail lines (K/L/M) merge/diverge (with 9 different train movements at West Portal/Ulloa)
2. Switch from manual to automated modes
3. Multi-modal conflicts: trains/pedestrians/cars

# Recent initiatives

Parking Control Officers at West Portal Station during AM and PM peak periods have reduced transit delay by ~40%



# Recent initiatives

- Local Control Panel installed as a part of Twin Peaks Tunnel upgrades
- Allows manually control which trains can pass through the intersection, allowing staff to prioritize critical movements to relieve congestion



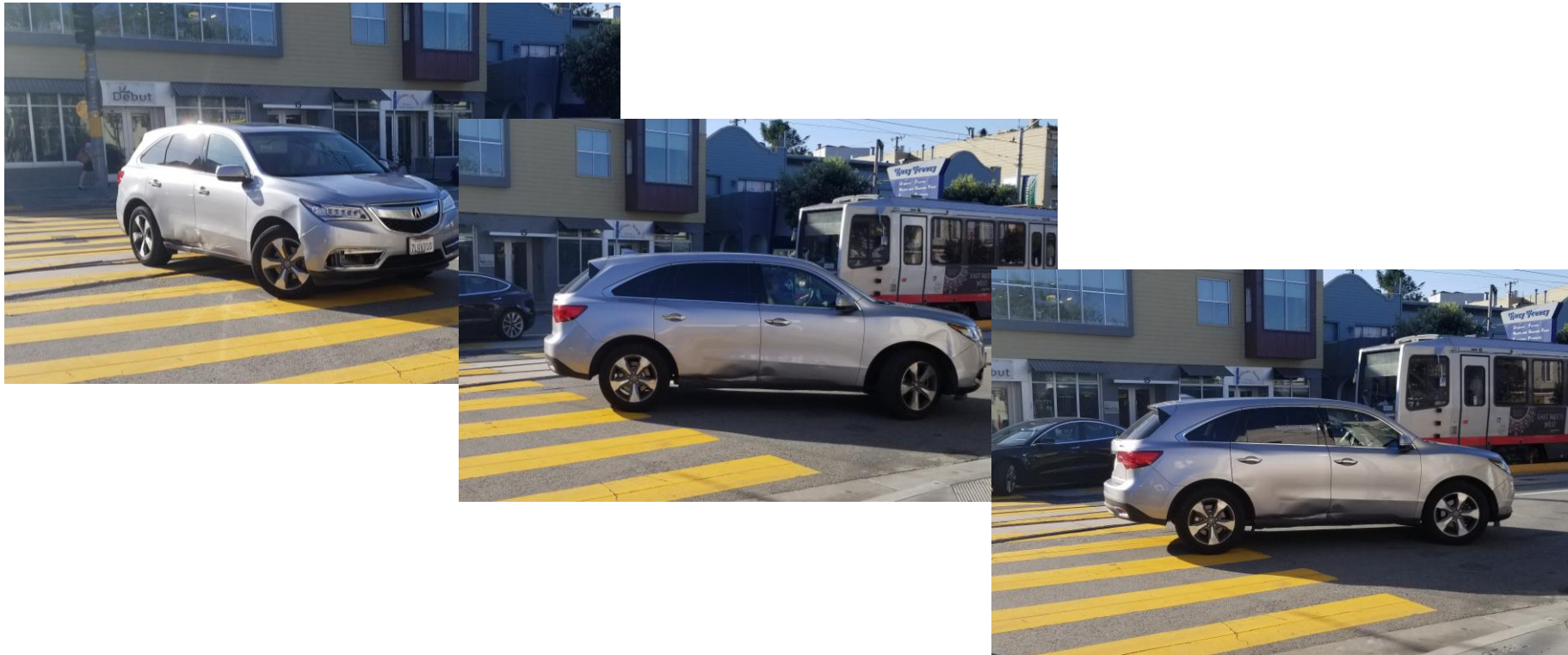
# Multi-modal conflicts contribute to train delay

Northbound left-turns from West Portal to Ulloa



# Multi-modal conflicts contribute to train delay

Northbound U-Turns from West Portal northbound to southbound



# Multi-modal conflicts contribute to train delay

48 Quintara-24<sup>th</sup> Street to West Portal inbound platform transfer





# Project proposals – Ulloa & West Portal



## 6-10am

No left-turn NB West Portal to WB Ulloa

Muni & Taxi Lane on NB West Portal

No left-turn SB Lenox to EB Ulloa

## All times

48 Quintara-24<sup>th</sup> St relocate Ulloa & West Portal inbound stop

No U-Turn from NB W Portal

# Project proposals – Vicente & West Portal



## **6-10am**

New Muni & Taxi Lane on NB West Portal between Vicente & Ulloa

Left Lane Must Turn Left from left NB lane on West Portal to WB Vicente  
Straight on West Portal or Right turn on Vicente allowed

## **All times**

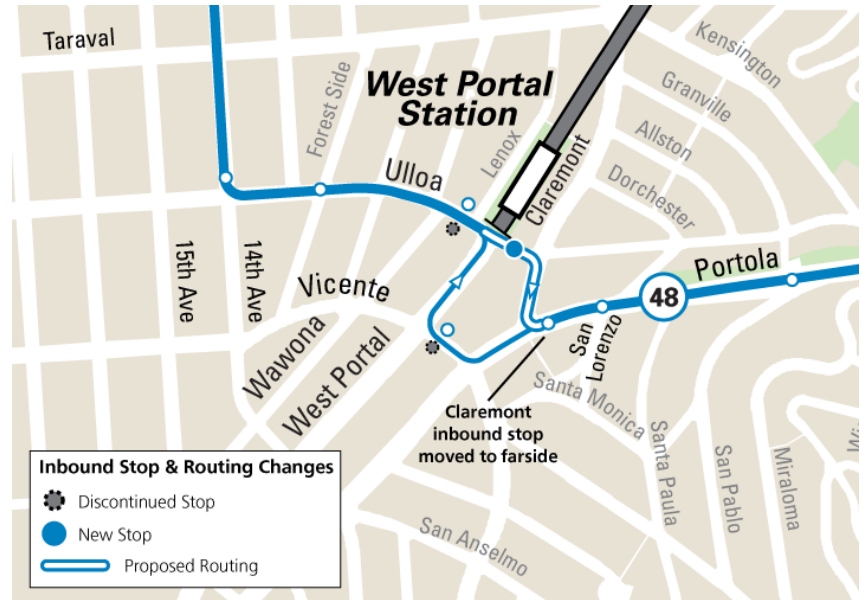
Remove Vicente & West Portal inbound stop

# Project proposals – 48 Quintara-24<sup>th</sup> Street

## 48 Quintara-24<sup>th</sup> Street Existing Route/Stops



## 48 Quintara-24<sup>th</sup> Street Proposed Route/Stops



# Project evaluation

After 6 months of implementation, will analyze following metrics and coordinate with stakeholders on any potential refinements

- **Light-rail vehicle delays** entering/exiting West Portal Station
- **Qualitative input** from train operators and inspectors
- **Qualitative input** from stakeholders
- **Qualitative observations** of interaction between Muni and private vehicles
- **Traffic volume** counts at West Portal/Ulloa, Lenox/Ulloa, Claremont/Ulloa, West Portal/Vicente, and Vicente/Wawona-Madrone
- **Muni-related collisions** within project area
- **Parking occupancy** on West Portal Avenue

# Outreach

- Phone/email/meetings with key stakeholders
  - West Portal Merchants
  - Greater West Portal Neighborhood Association
  - West Portal Elementary
  - SF Transit Riders
  - Senior Disability Action
  - Walk San Francisco
  - District 7 Supervisor Yee
- 2 rounds of meetings with representatives from WPM and GWPNA
- Door to Door with merchants near bus stop change

# What we heard/what we did

**What We Heard:** Some of these restrictions may have major implications for business access or neighborhood circulation

**How We Responded:** Eliminated 2 proposed restrictions - *Weekday morning Ulloa eastbound right turns and Ulloa westbound through movements at West Portal Ave*

**What We Heard:** We have other ideas that we think would also be helpful

**How We Responded:** Added 2 new proposed restrictions - *No U-turns at all times, no southbound left turns from Lenox at Ulloa*

# Next steps

- Implementation later this month
- Ongoing stakeholder input and evaluation through late Fall 2019