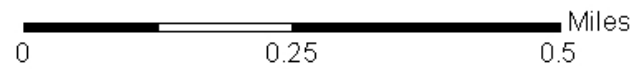


# 2<sup>nd</sup> Street Area Map



- Existing Bicycle Route Network
- 2nd St Bicycle Lanes Project Limits

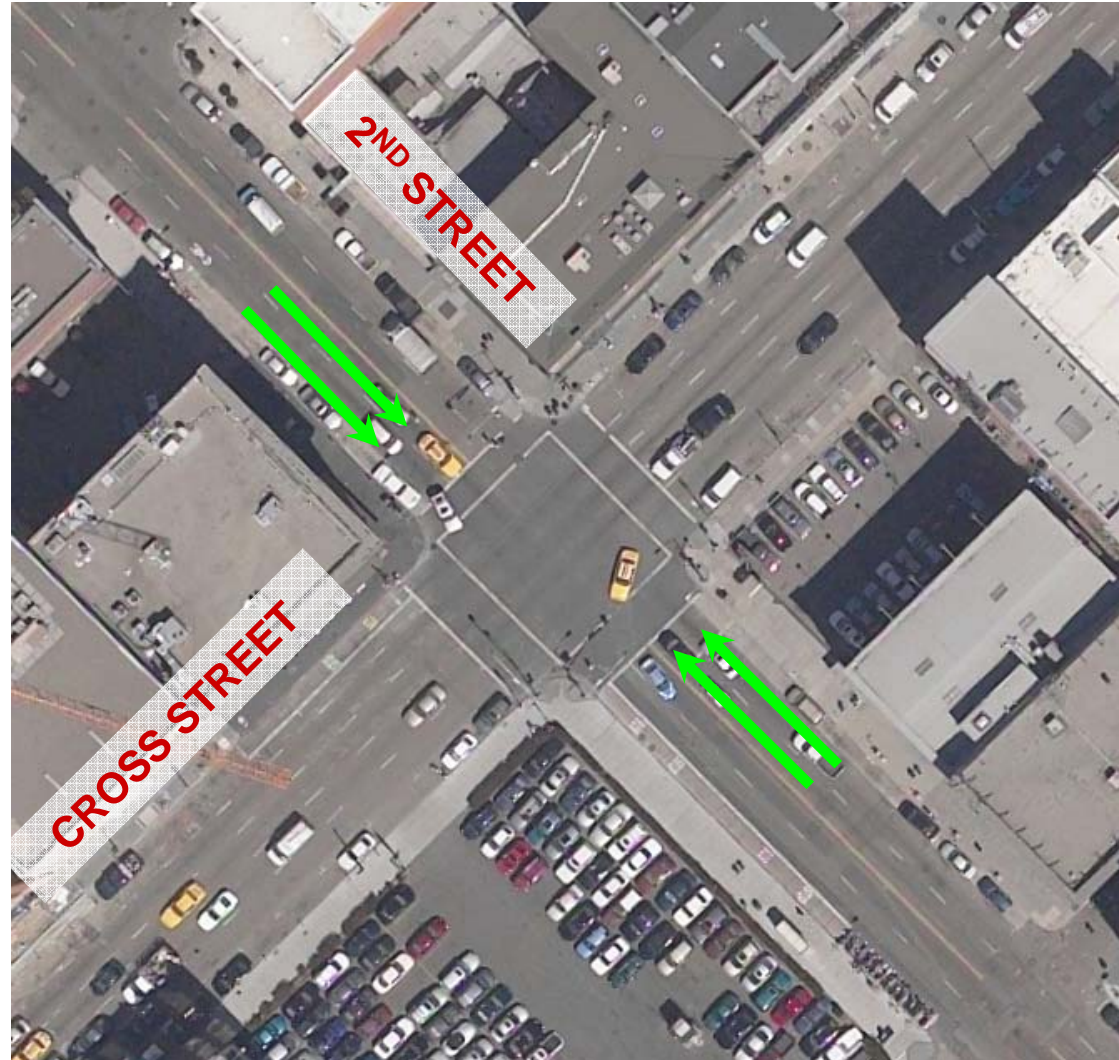


# 2<sup>nd</sup> Street, Market to Harrison

Existing



Vehicle Travel Lane



# 2<sup>nd</sup> Street, Market to Harrison

Proposed



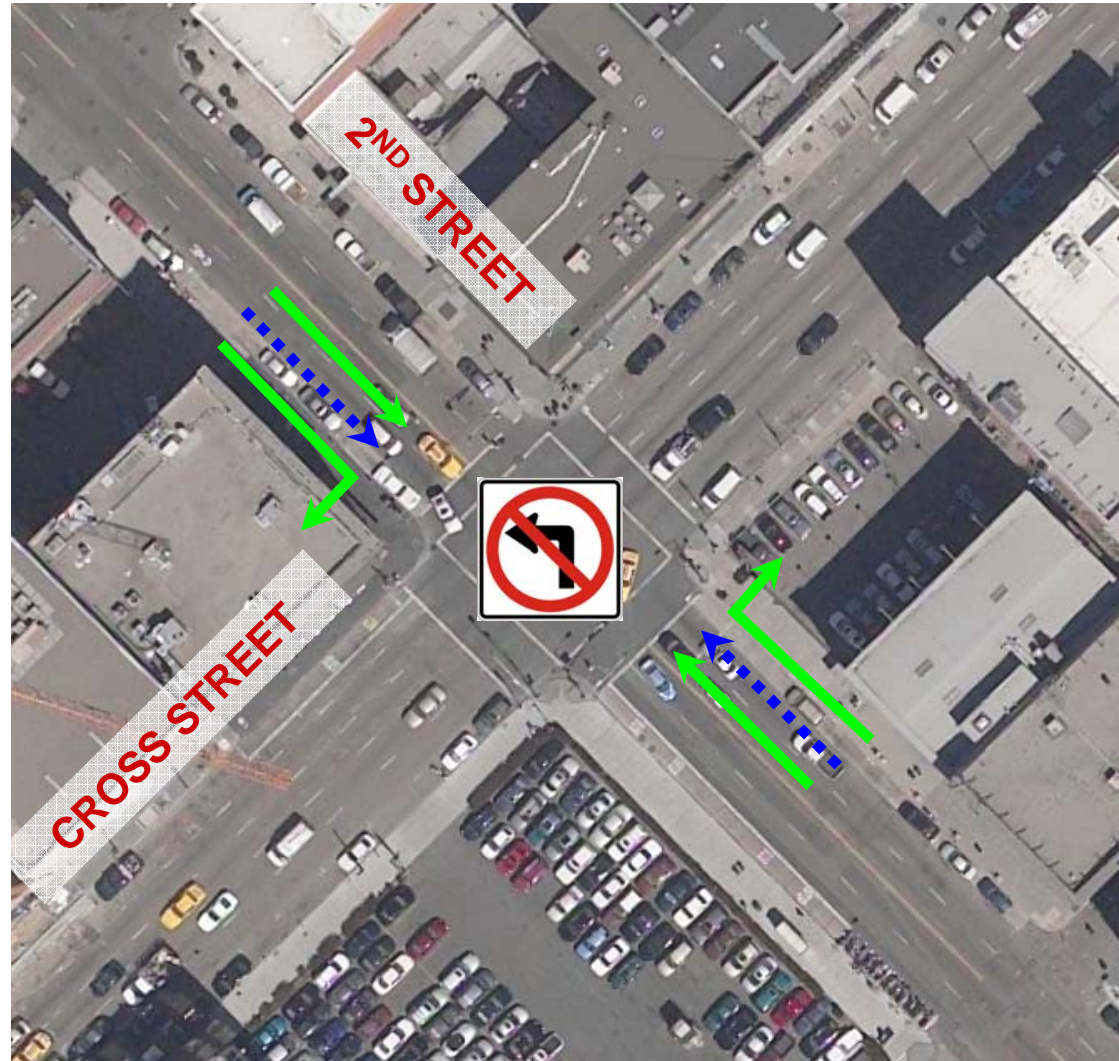
Vehicle Travel Lane



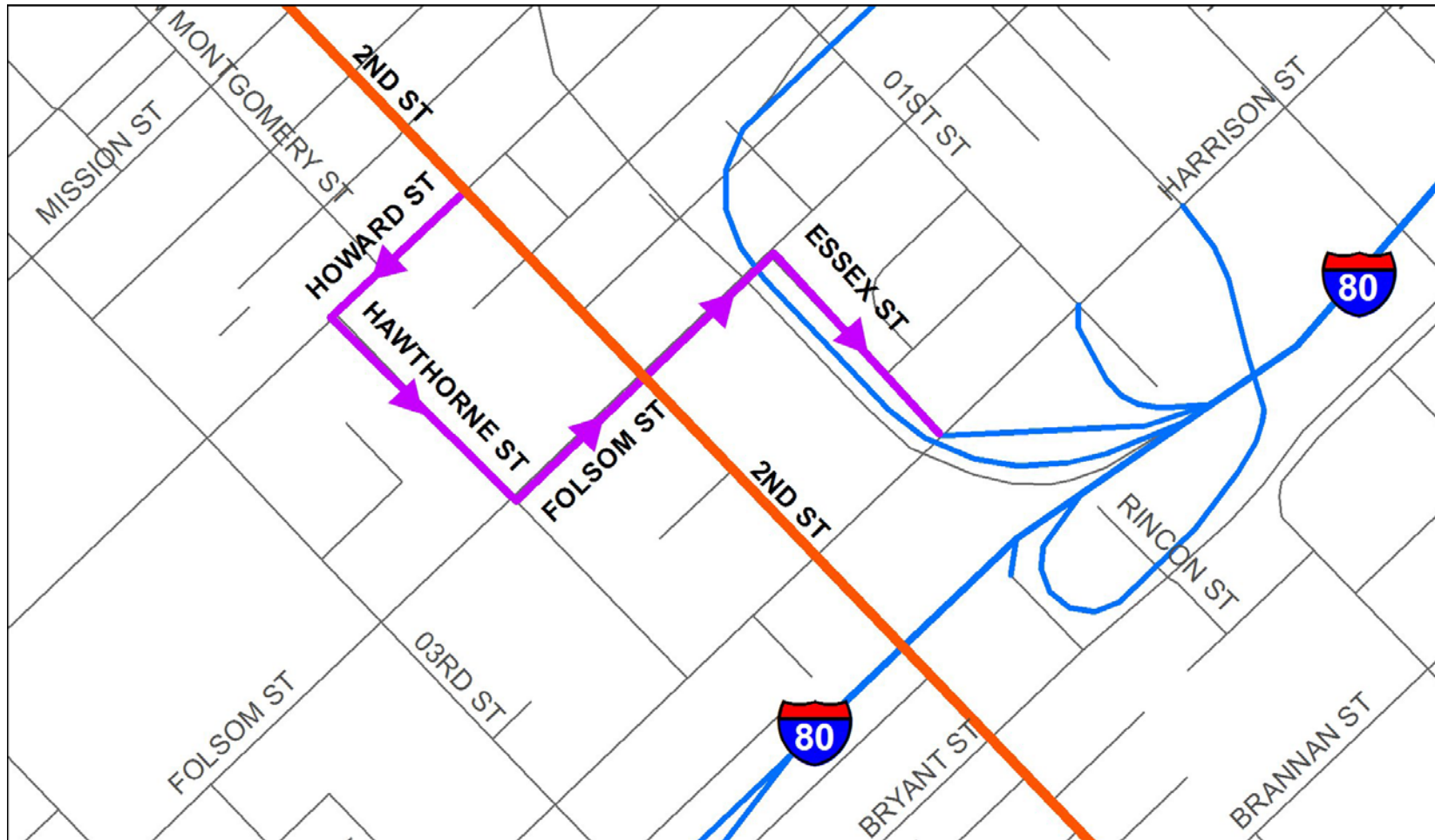
Vehicle Right-Turn Pocket



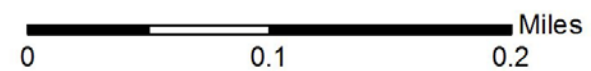
Bicycle Lane



# Alternate Route to I-80 Westbound



- Alternate Route to I-80 Essex Street Onramp
- Freeways
- 2nd Street Project Limits

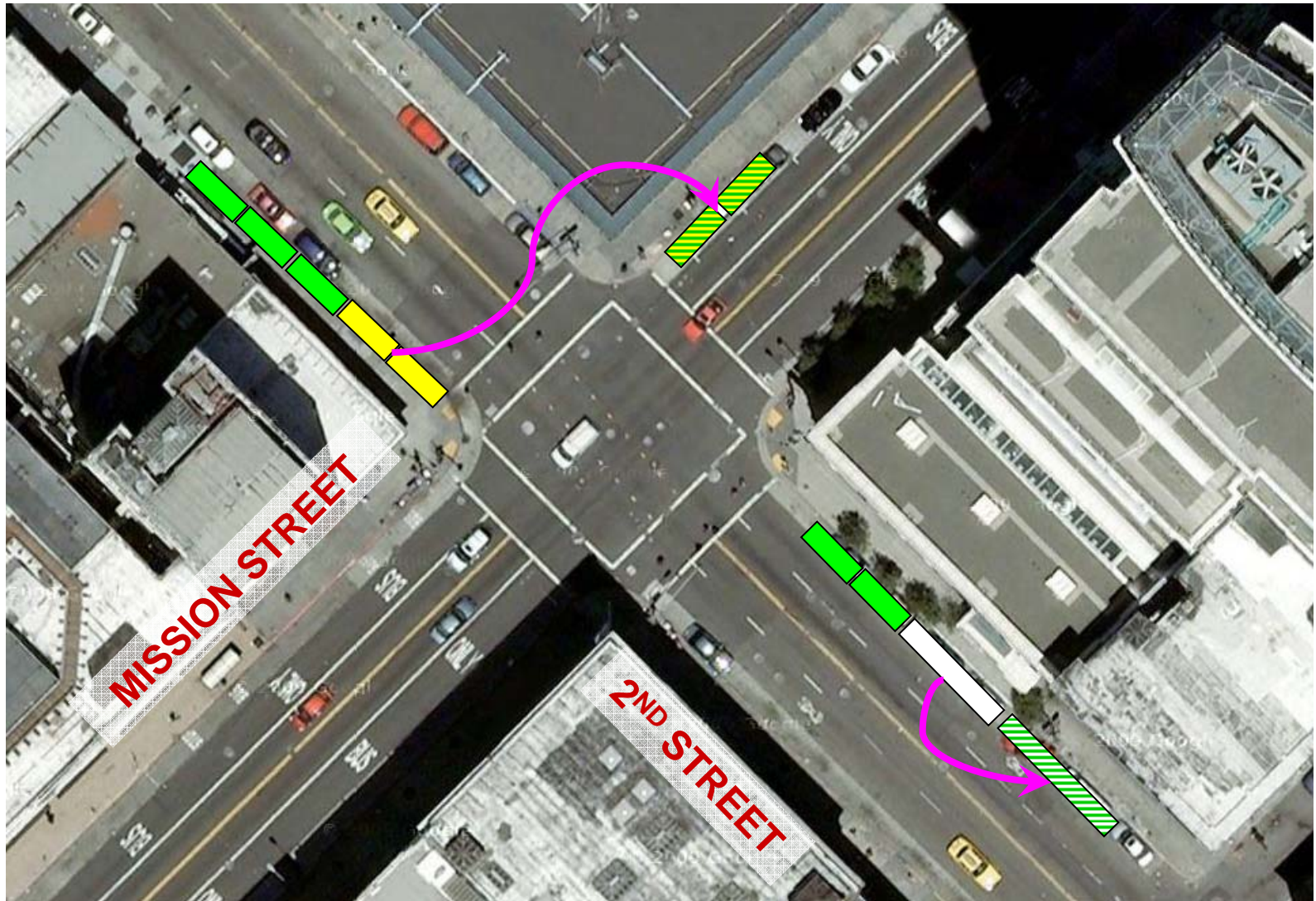


# Parking Changes at 2<sup>nd</sup>/Mission

Remove 9  
general  
metered  
spaces

Relocate 2  
yellow  
commercial  
loading zones

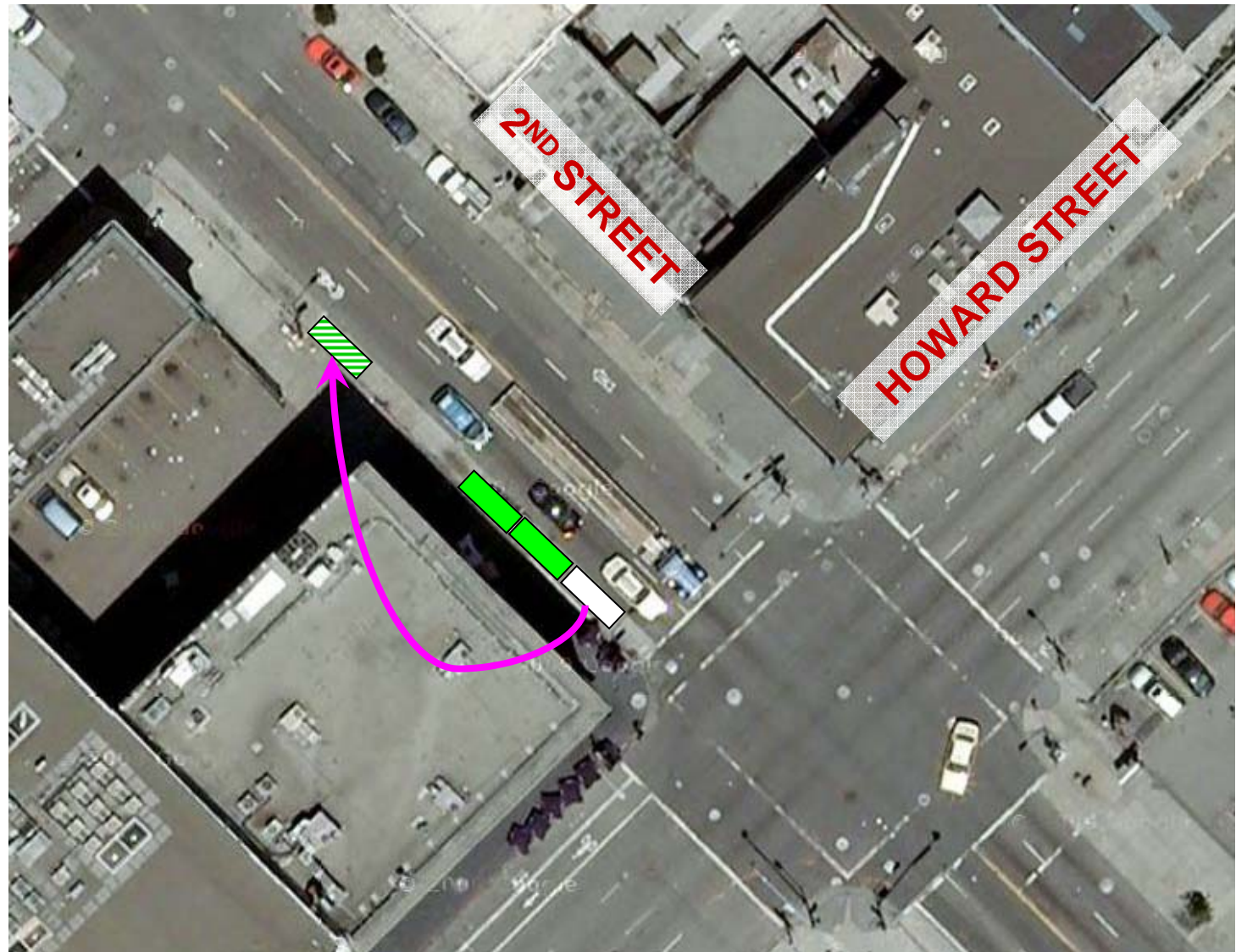
Relocate 1  
white  
passenger  
loading zone



# Parking Changes at 2<sup>nd</sup>/Howard

Remove 3  
general metered  
spaces

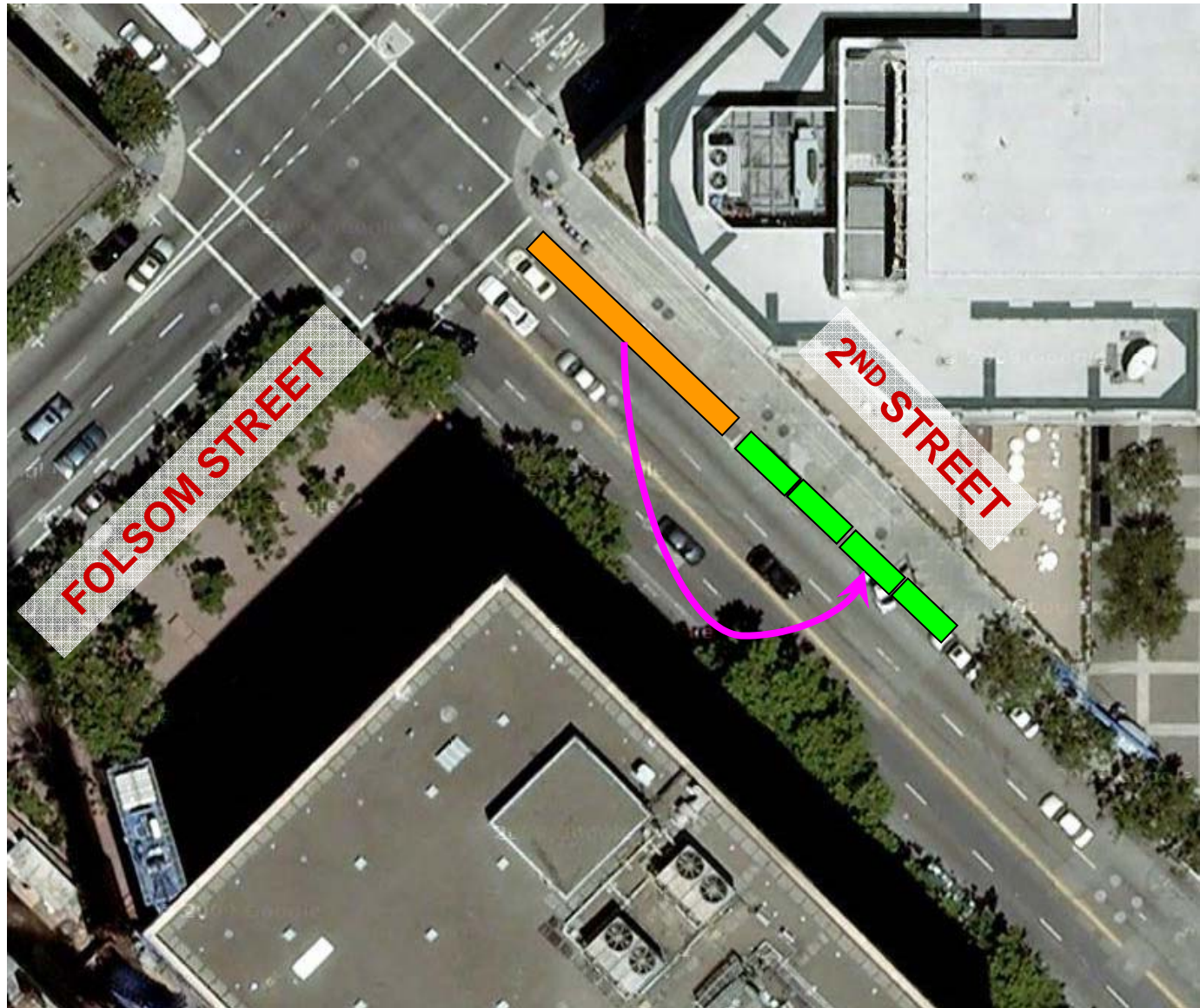
Relocate 1 part-  
time white  
passenger  
loading zone



# Parking Changes at 2<sup>nd</sup>/Folsom

Relocate MUNI  
bus zone for  
Line 10

Remove 4  
general metered  
spaces



# Parking Changes at 2<sup>nd</sup>/Harrison

Remove 5  
general  
metered  
spaces

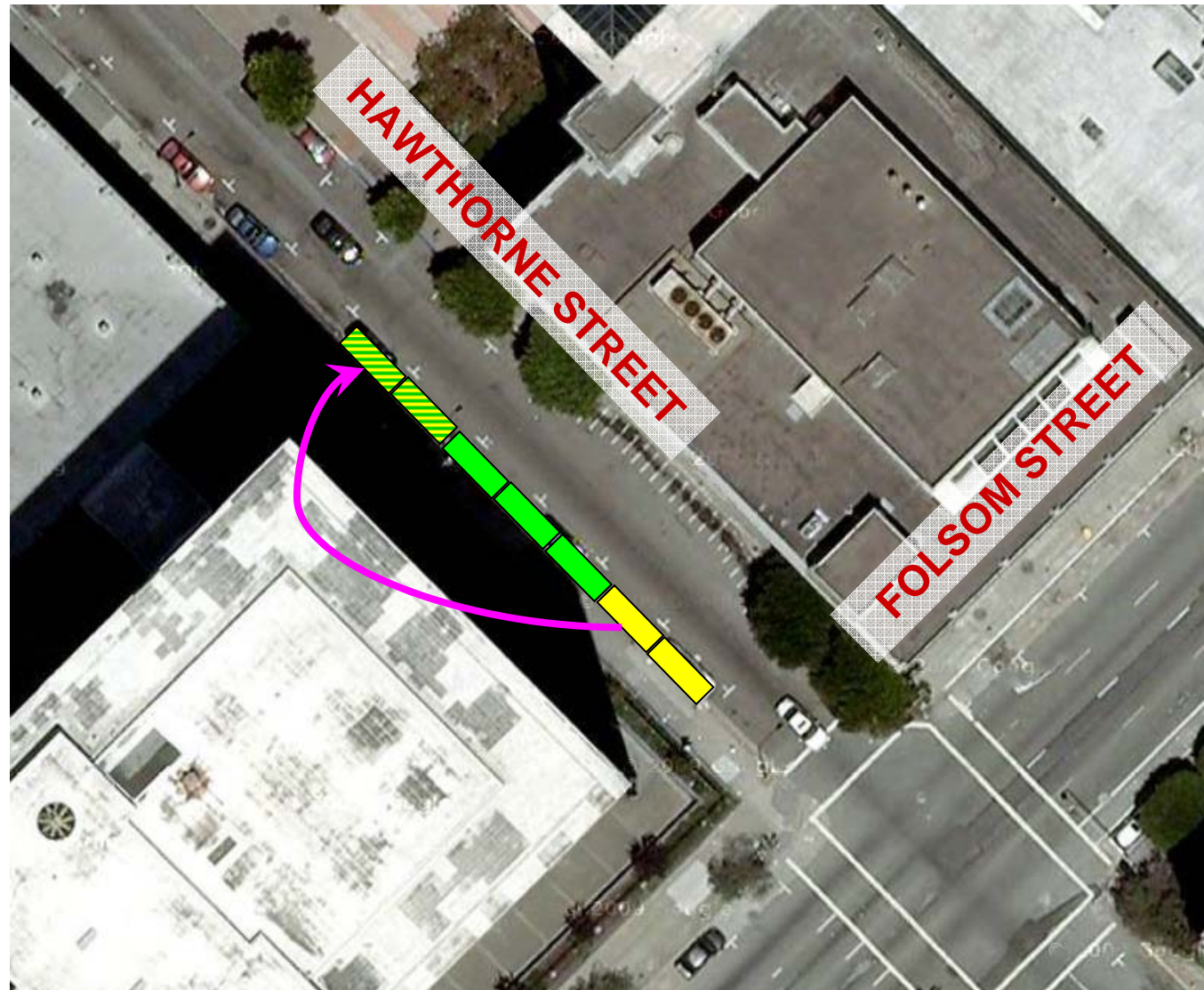




# Parking Changes at Hawthorne/Folsom

Remove 5  
general metered  
spaces

Relocate 2  
yellow  
commercial  
loading zones

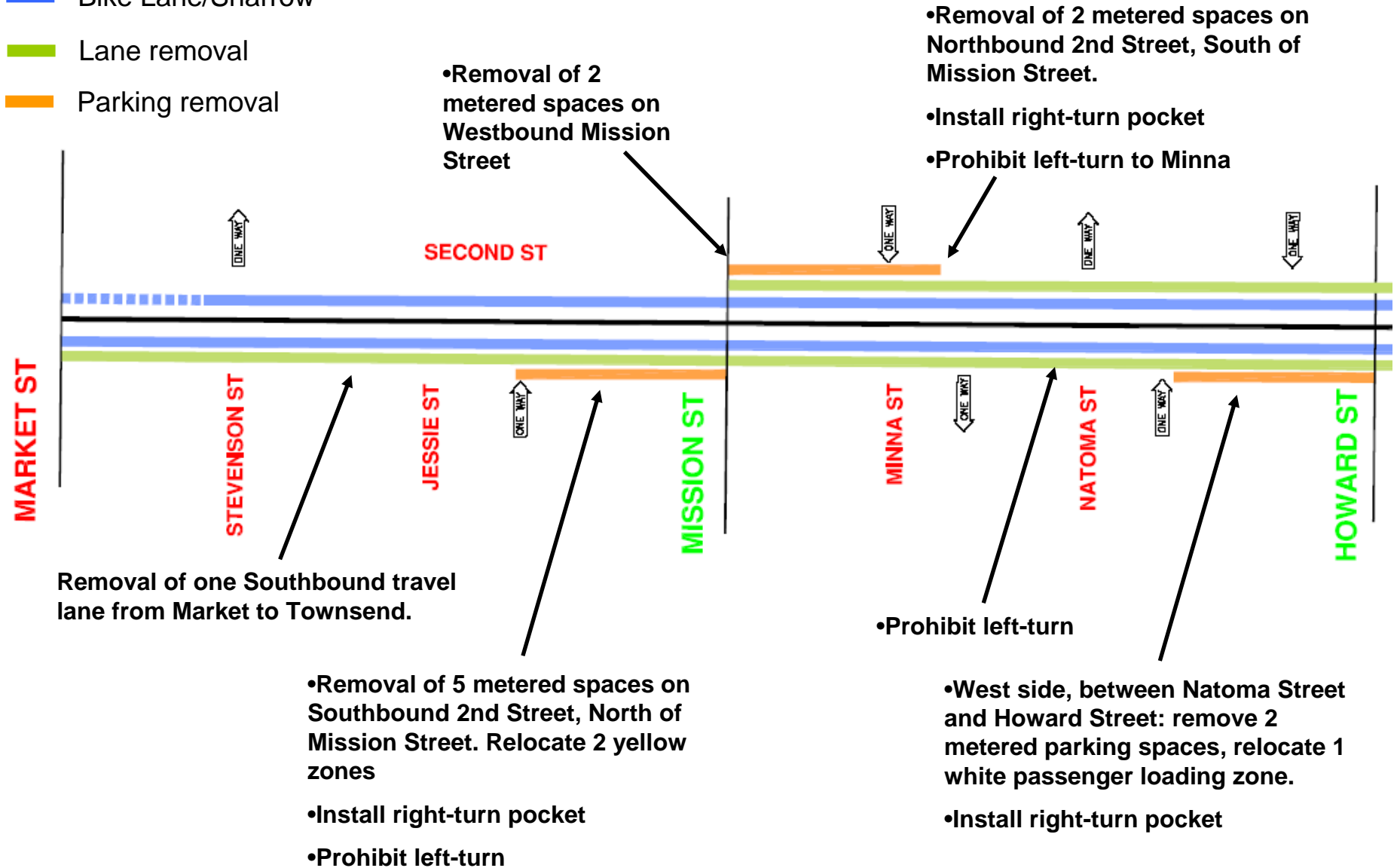


# Parking Change Summary

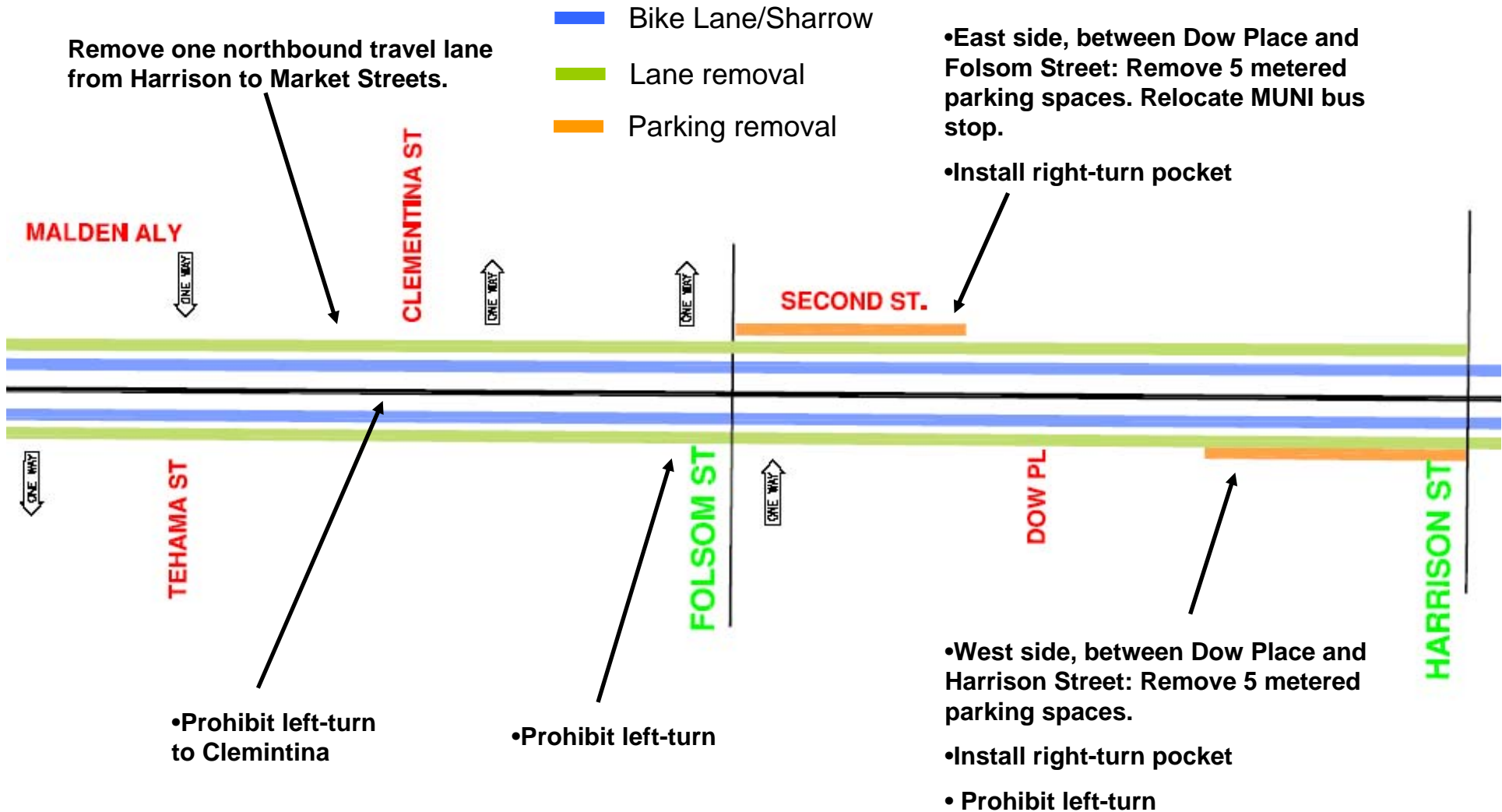
- **2<sup>nd</sup> Street, Market to Harrison**
  - 21 general metered spaces removed
  - 2 yellow commercial loading zones relocated
  - 2 white passenger loading zones relocated
- **Hawthorne Street @ Folsom**
  - 5 general metered spaces removed
  - 2 yellow commercial loading zones relocated
- **Total parking loss = 26 spaces**

# Proposed changes on 2<sup>nd</sup> Street

- █ Bike Lane/Sharrows
- █ Lane removal
- █ Parking removal

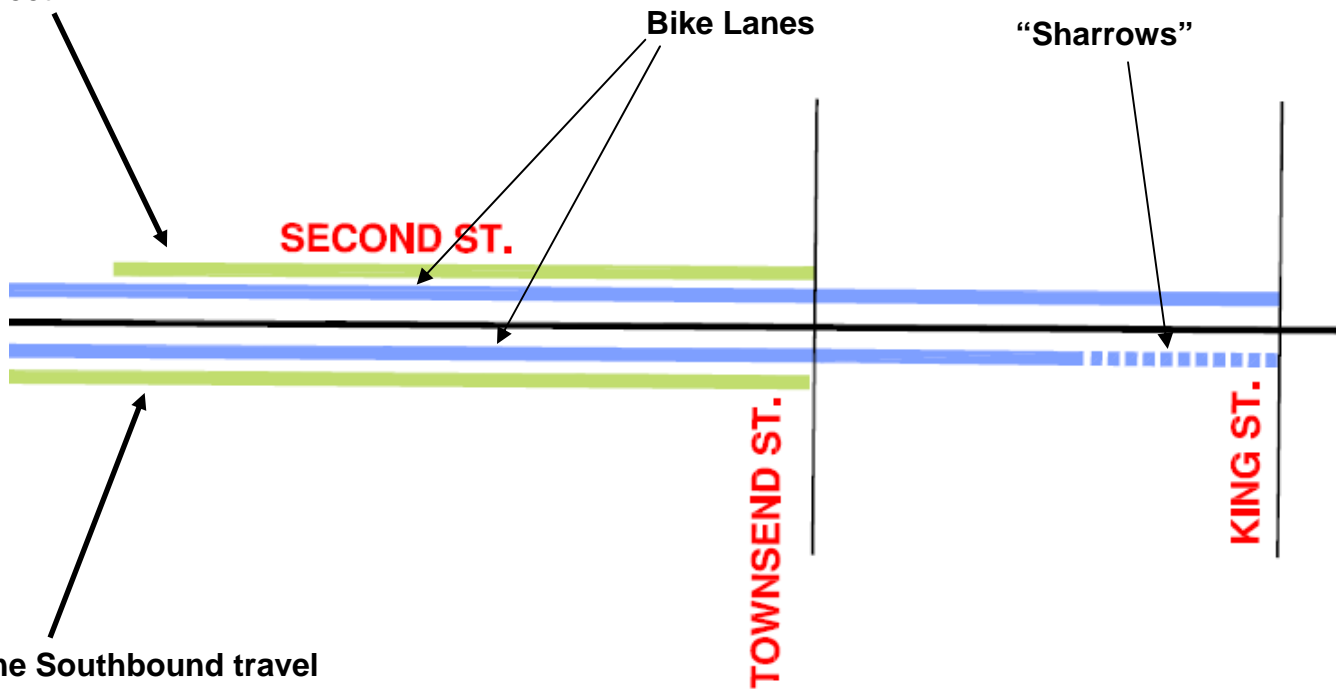


# Proposed changes on 2<sup>nd</sup> Street



# Proposed parking removal on 2<sup>nd</sup> Street




Remove one northbound travel lane from Townsend to just south of Brannan Street.

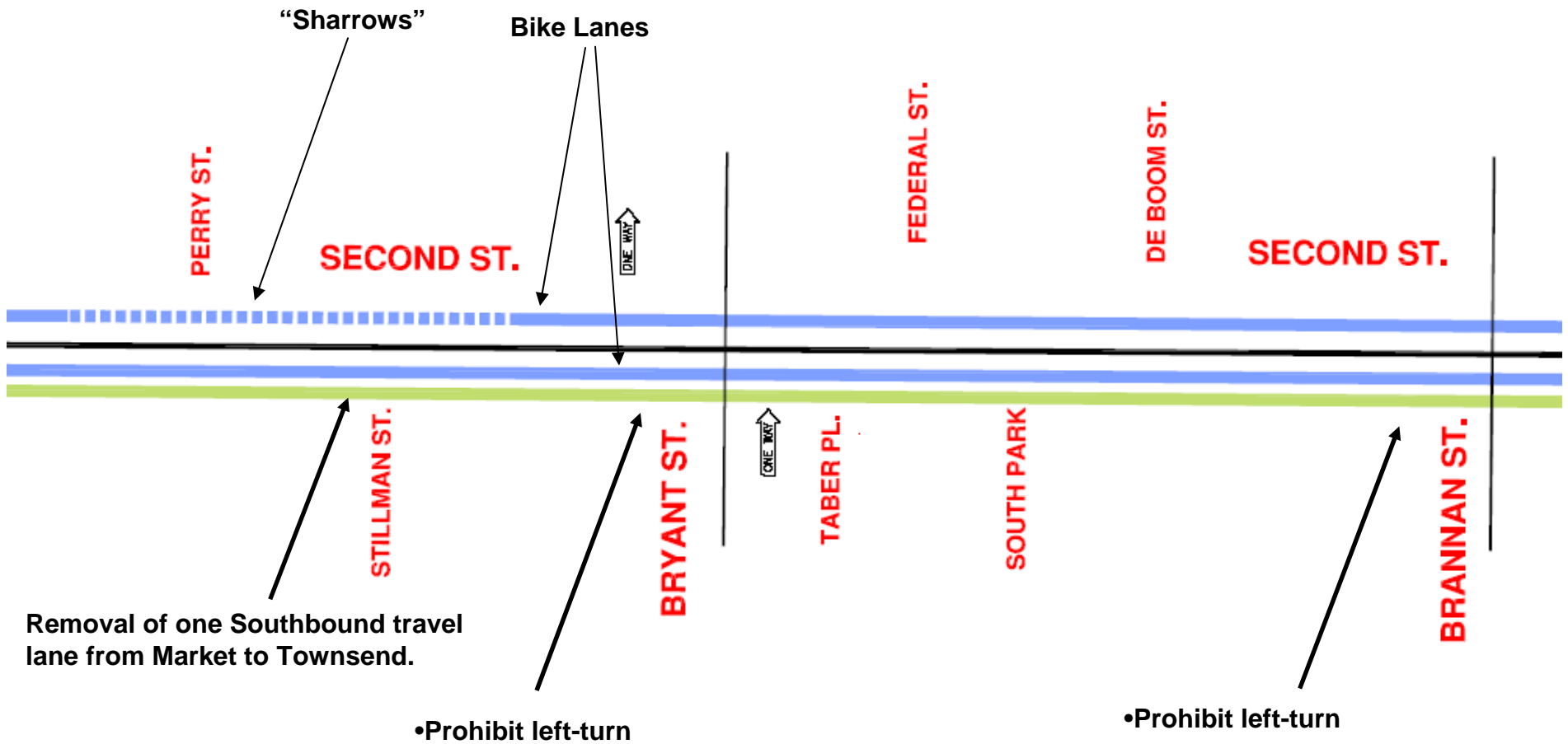


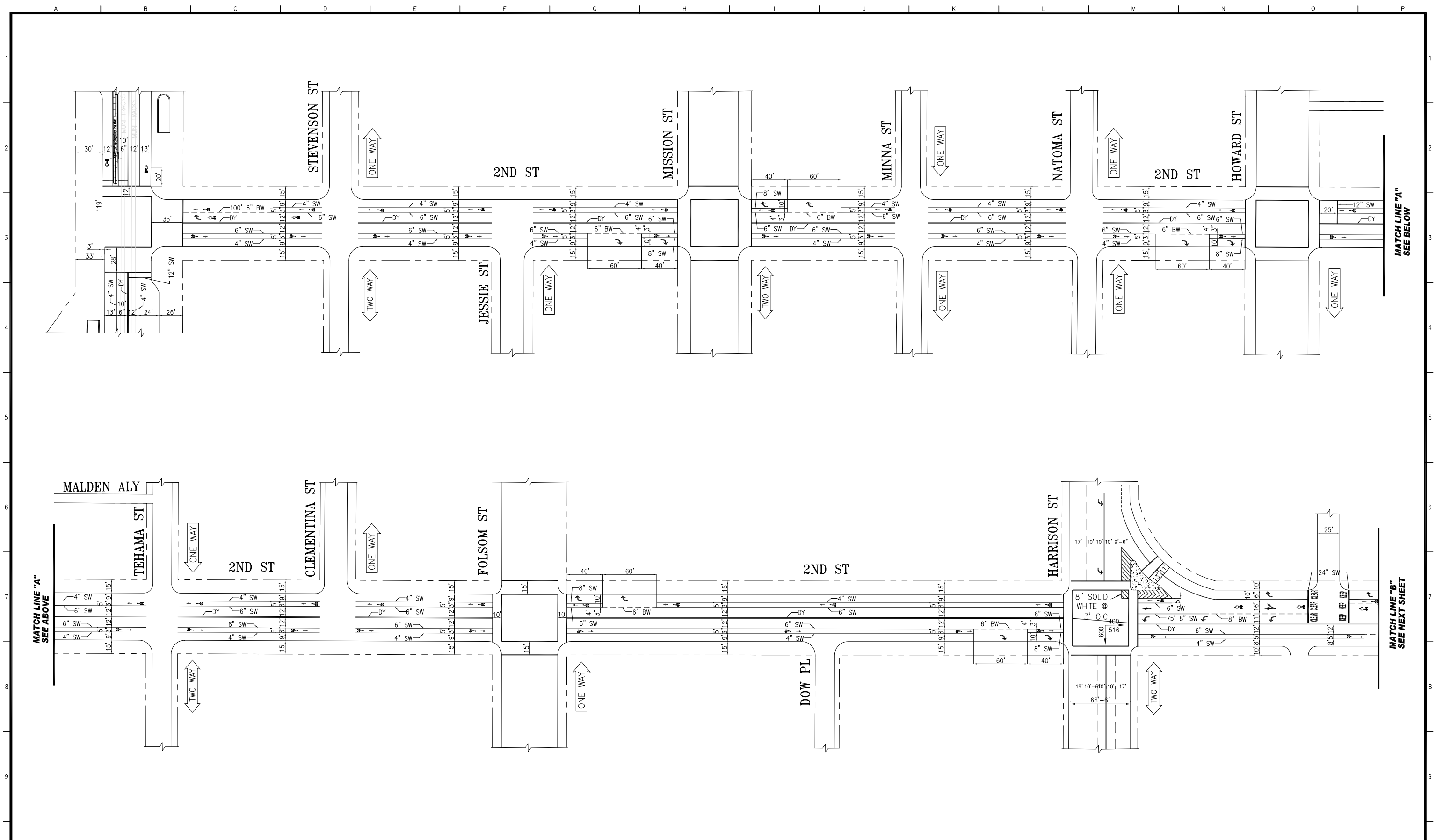
Removal of one Southbound travel lane from Market to Townsend.

- █ Bike Lane/Sharrow
- █ Lane removal
- █ Parking removal

# Proposed changes on 2<sup>nd</sup> Street

-  Bike Lane/Sharrows
-  Lane removal
-  Parking removal





NO.	DATE	DESCRIPTION	BY	APP.
TABLE OF REVISIONS				
CHECK WITH TRACING TO SEE IF YOU HAVE LATEST REVISION				

REFERENCE INFORMATION  
& FILE NO. OF SURVEYS



**SAN FRANCISCO MUNICIPAL TRANSPORTATION AGENCY**  
**DIVISION OF PARKING AND TRAFFIC - TRAFFIC ENGINEERING**  
**CITY AND COUNTY OF SAN FRANCISCO**

DESIGNED: DATE:  
DRC 05/29/09

DRAWN: DATE:

CHECKED: DATE:

APPROVED

SECTION ENGINEER DATE:

CITY TRAFFIC ENGINEER DATE:

SCALE:

SHEET OF SHEETS

1 OF 2

PROJECT 2-1 MODIFIED OPTION 1

2ND STREET  
KING STREET TO MARKET STREET

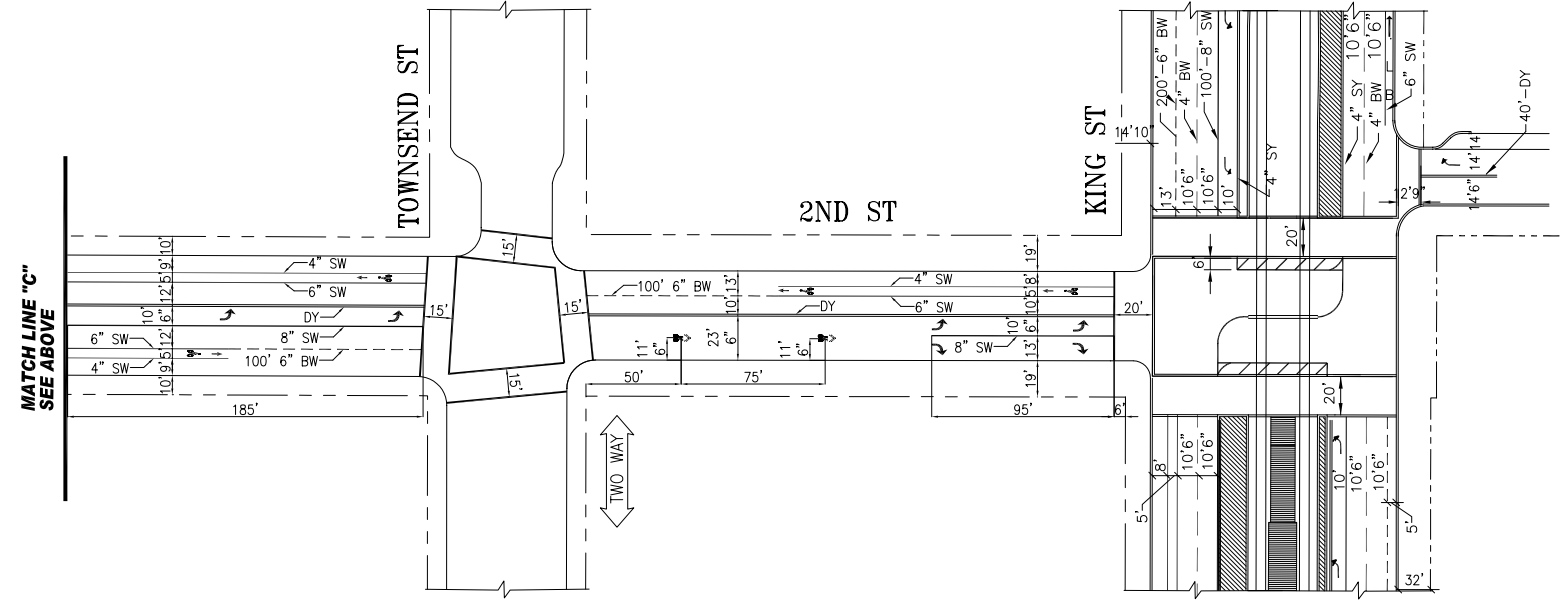
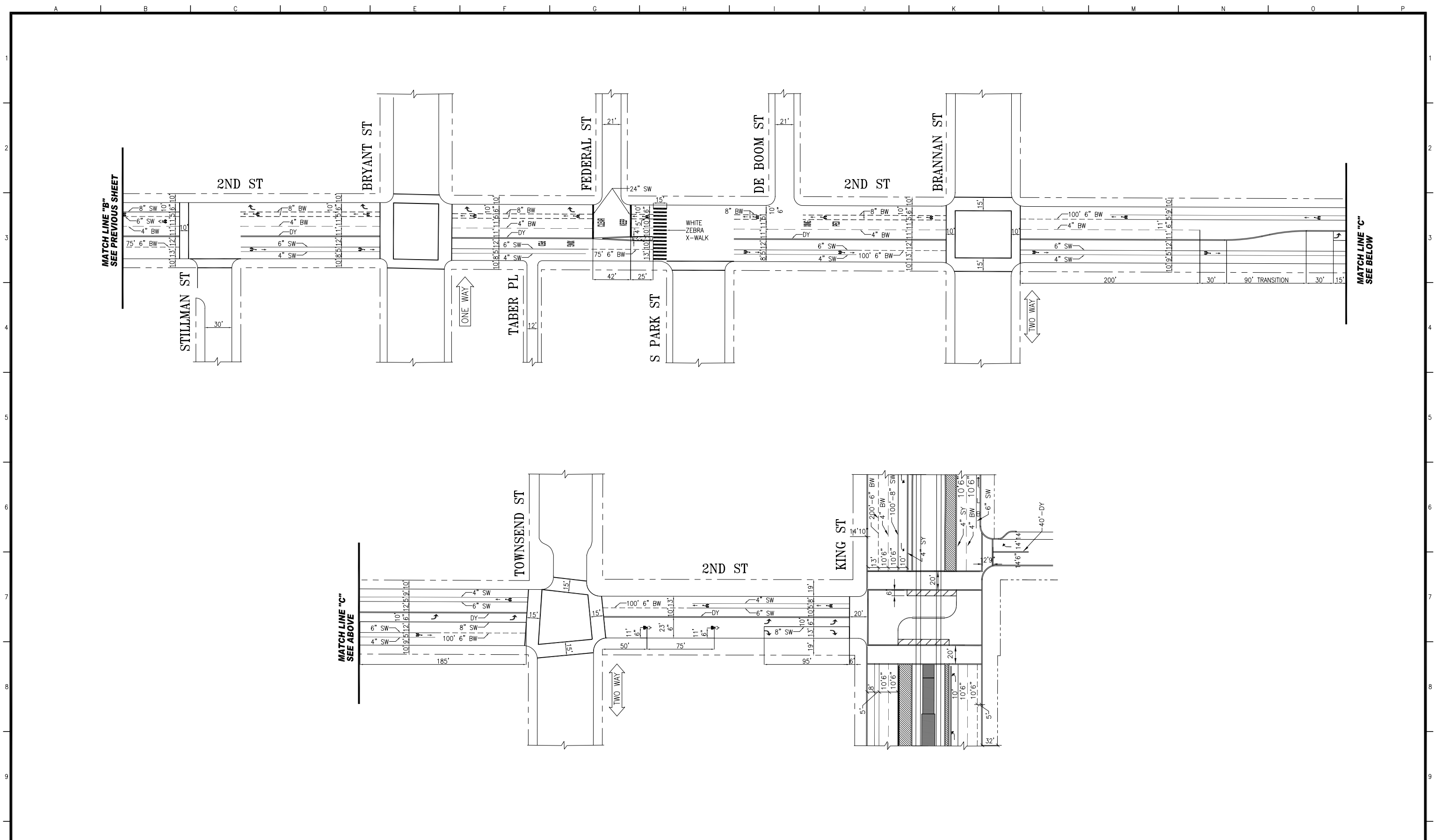
CONTRACT NO.

DRAWING NO.

FILE NO.

REV. NO.

EXTERNAL REFERENCES:  
 FONTS USED:  
 SCALE FACTOR:  
 PLOT SCALE:  
 ORIGIN:  
 FILE NAME:  
 DATE:



NO.	DATE	DESCRIPTION	BY	APP.
TABLE OF REVISIONS				
CHECK WITH TRACING TO SEE IF YOU HAVE LATEST REVISION				

REFERENCE INFORMATION  
& FILE NO. OF SURVEYS



**SAN FRANCISCO MUNICIPAL TRANSPORTATION AGENCY**  
**DIVISION OF PARKING AND TRAFFIC - TRAFFIC ENGINEERING**  
**CITY AND COUNTY OF SAN FRANCISCO**

DESIGNED: DATE: 05/29/09  
 DRAWN: DATE:  
 CHECKED: DATE:

APPROVED  
 SECTION ENGINEER  
 CITY TRAFFIC ENGINEER

SCALE:  
 SHEET OF SHEETS  
 2 OF 2

PROJECT 2-1 MODIFIED OPTION 1  
 2ND STREET  
 KING STREET TO MARKET STREET

CONTRACT NO.  
 DRAWING NO.  
 FILE NO.  
 REV. NO.

EXTERNAL REFERENCES:  
 FONTS USED:  
 SCALE FACTOR:  
 PLOT SCALE:  
 ORIGIN:  
 FILE NAME:  
 DATE: