

California Pacific Medical Center Hospital Rebuild

05 | 01 | 2012
SAN FRANCISCO, CALIFORNIA



CPMC Rebuild Project: Overview

CPMC's Near-Term Projects include 5 new buildings, including:

- **Two new buildings at the St. Luke's Campus**
- Two new buildings at a new, Cathedral Hill Campus
- One new building at the Davies Campus

St. Luke's Campus Project Description

- Construction of a new, 146,410 sf, five-story, 80-bed, full service acute care hospital
 - To be built on an existing surface parking lot and a portion of the to-be-vacated San Jose Avenue
 - The existing hospital stays in operation during construction



ST. LUKE'S HOSPITAL

- Construction of a new entry plaza and pedestrian pathway adjacent to the hospital entrance, connecting 27th St. & Cesar Chavez
- Demolition of the existing hospital when new hospital is complete
- Construction of new, five-story medical office building

Cathedral Hill Campus Project Description

- Construction of a new, 555-bed, **265' tall, 15-story** hospital at the site of the closed Cathedral Hill Hotel (Van Ness & Geary)
- **Construction of a new, 130' tall, nine-story** medical office building across Van Ness from the Hospital
- Construction of an underground tunnel beneath Van Ness connecting the two buildings
- **Once Cathedral Hill is complete, acute care services at CPMC's California & Pacific Campuses will be transferred to Cathedral Hill**



CATHEDRAL HILL HOSPITAL

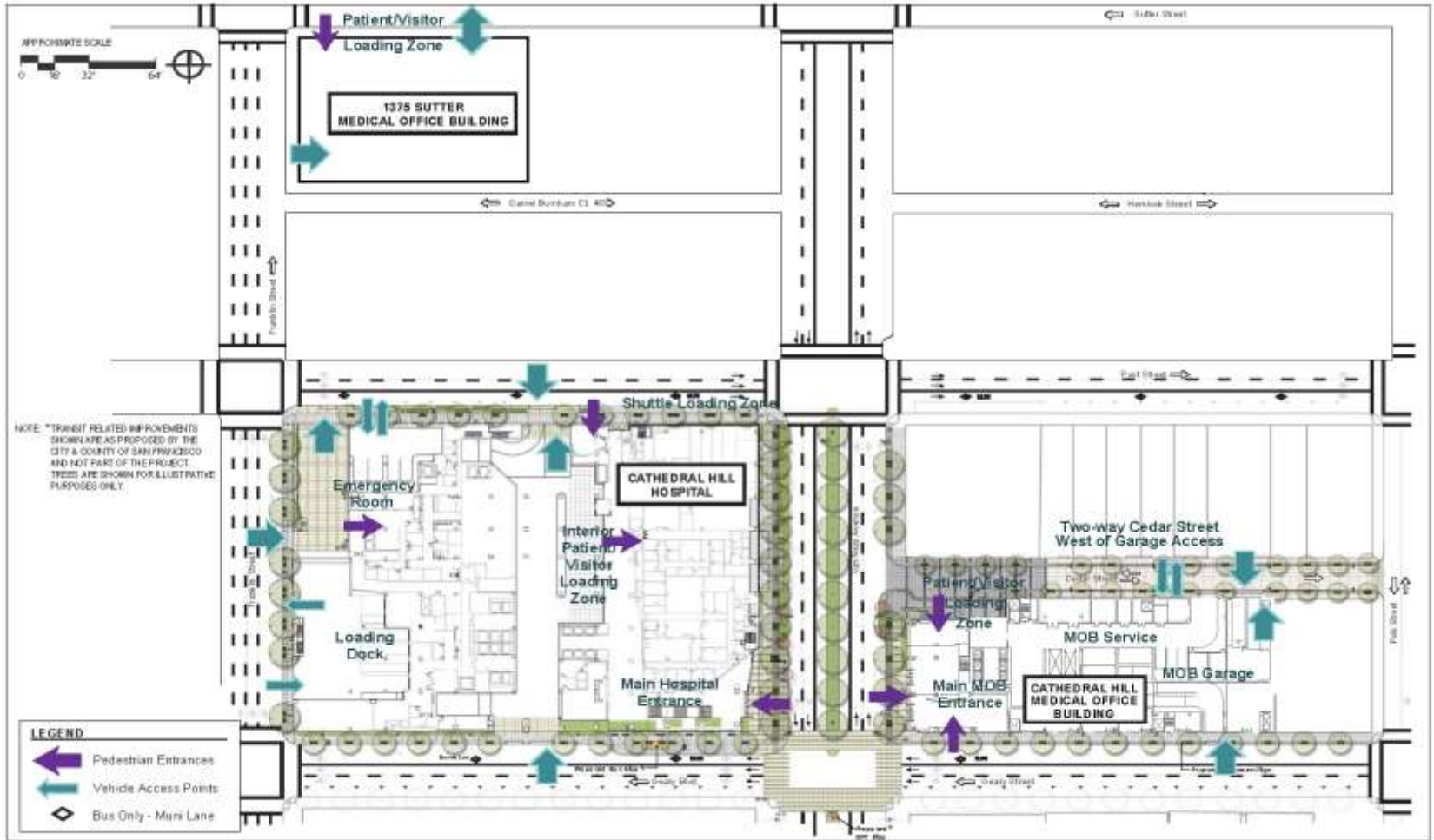
Davies Campus Project Description

- A new, 46,006 gross square feet four-story medical office /clinic building housing the Neuroscience Institute on an existing surface parking lot, at the SW corner of Duboce Ave. and Noe Street.
- **Includes a new “MUNI lobby”** at the NE corner of the property, connecting the lowest portion of the Campus with the N-Judah MUNI train line across Duboce Avenue.
- Includes streetscape Improvements: a wider sidewalk on Noe Street; bulbouts at the NE and SE corners of Noe St.; street furnishings along Noe St.; and new landscaping/tree plantings.

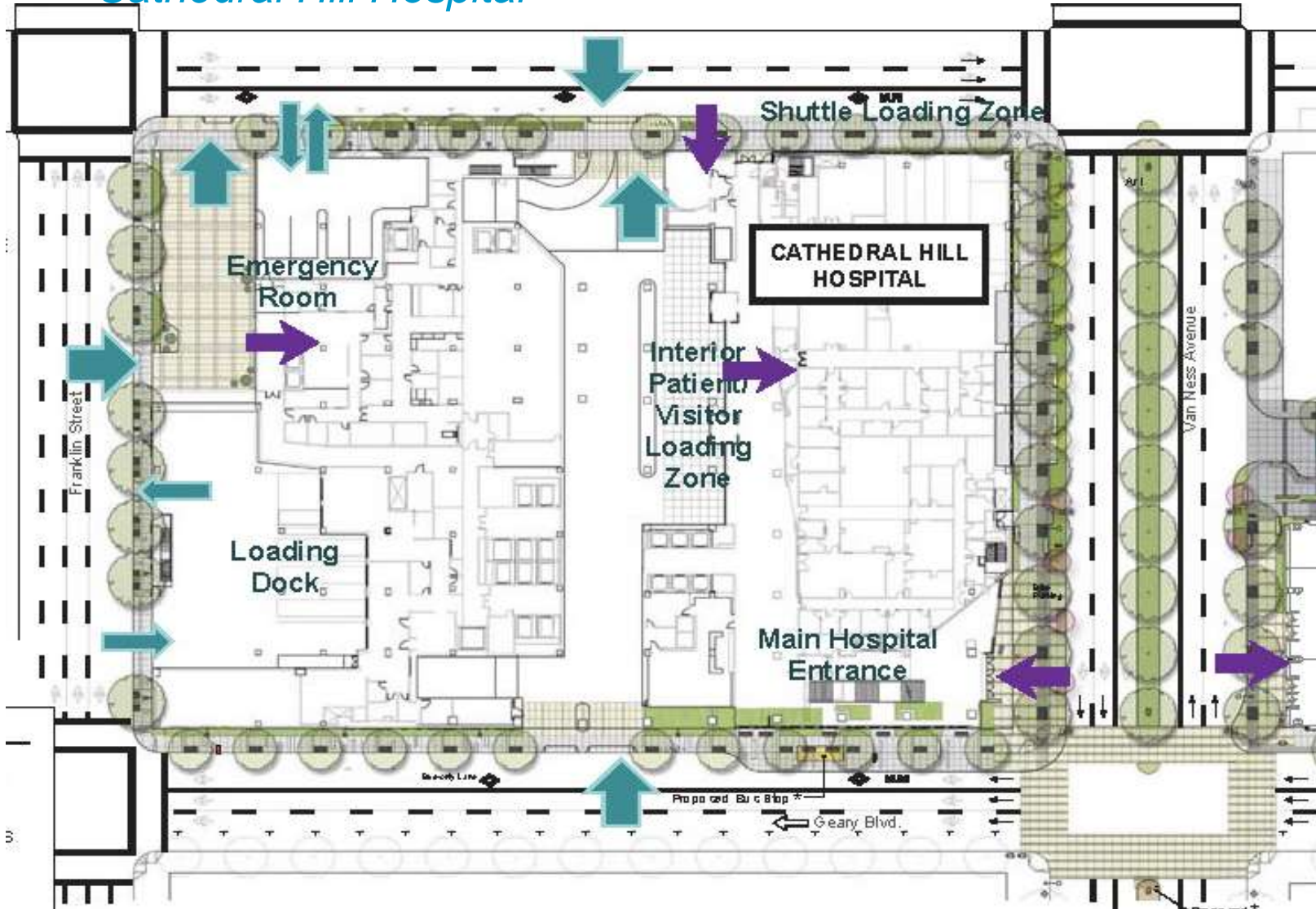


DAVIES NEUROSCIENCE INSTITUTE

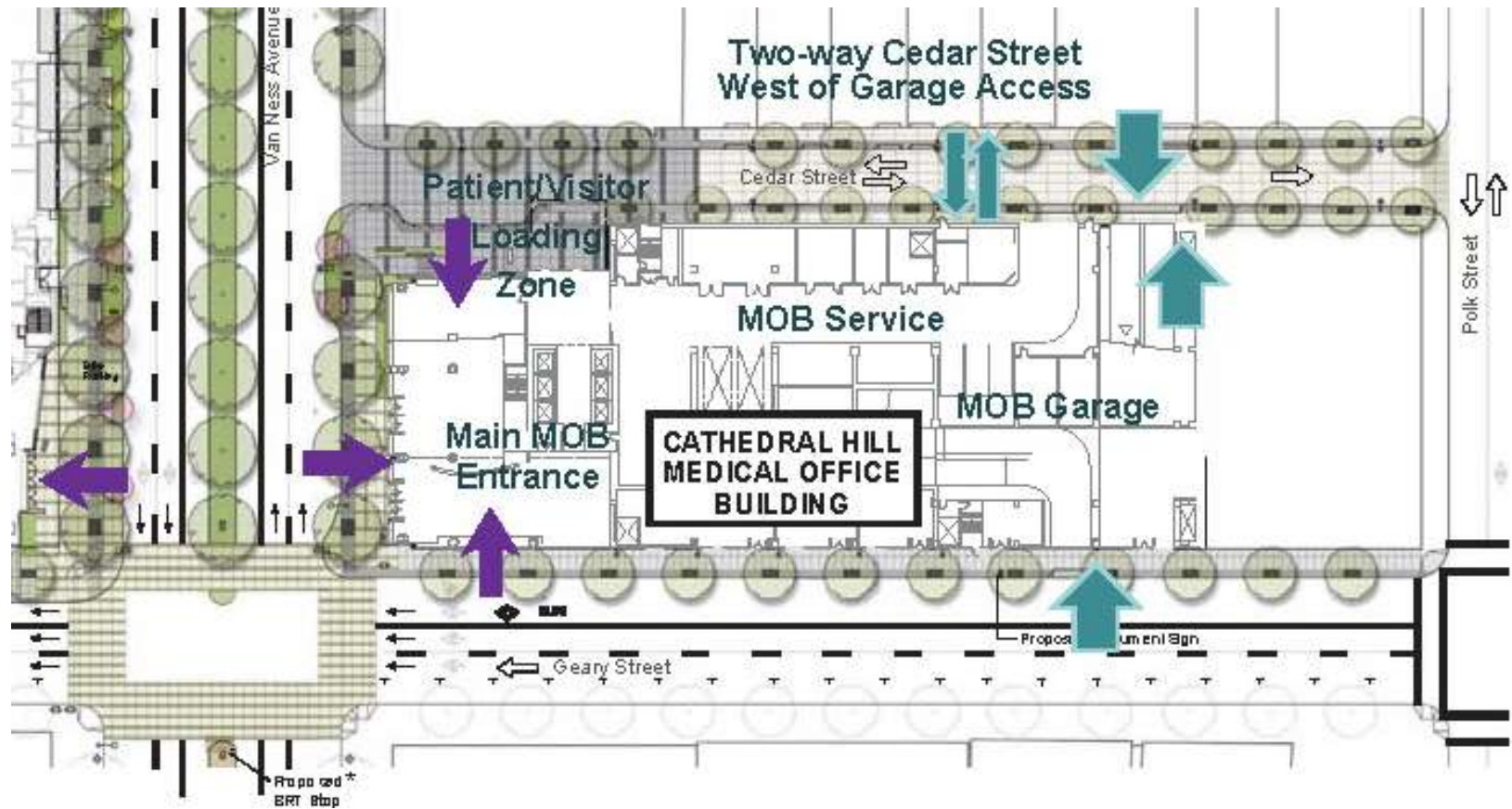
Vehicular Access & Loading: Cathedral Hill Campus Overview



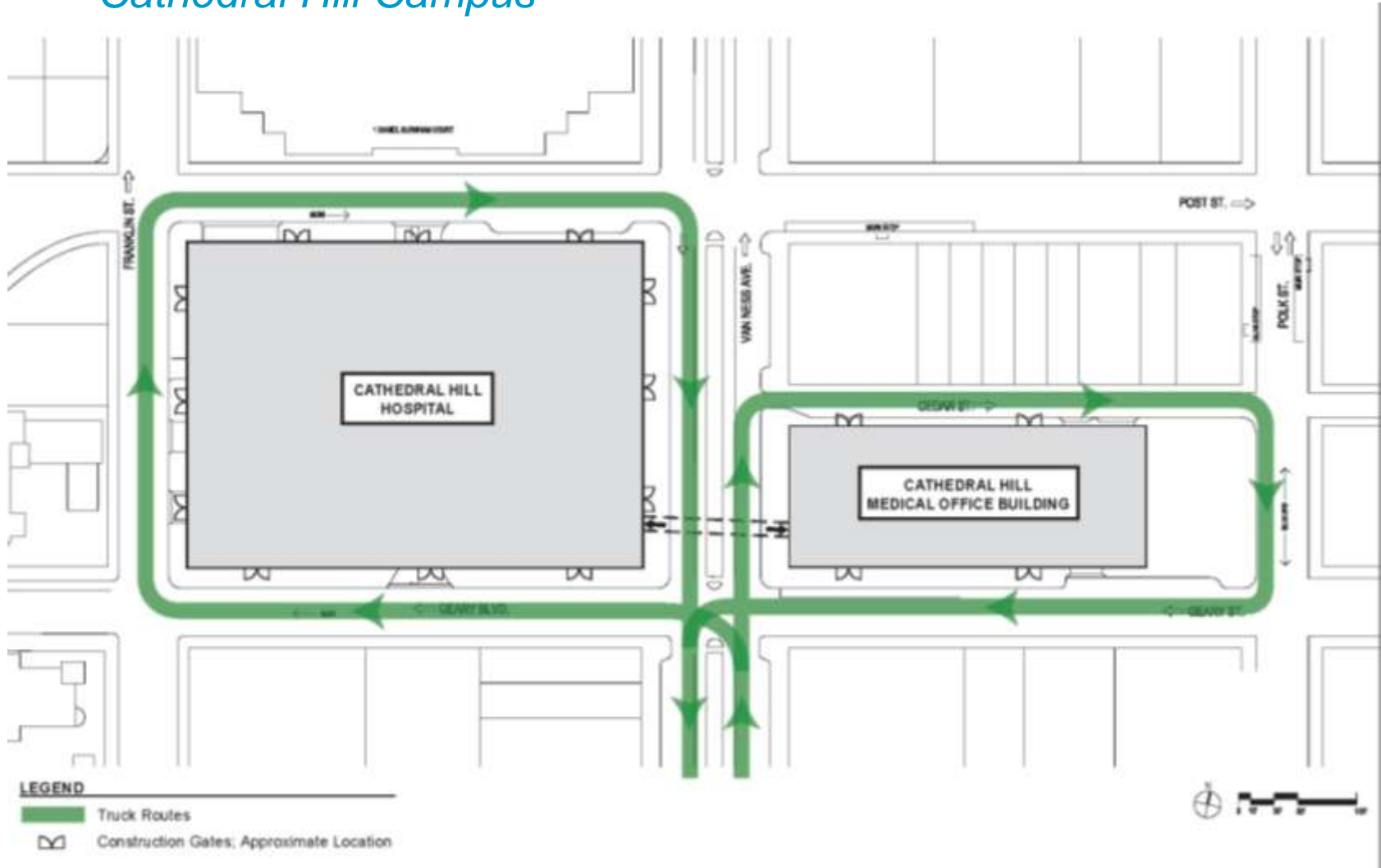
Vehicular Access & Loading: *Cathedral Hill Hospital*



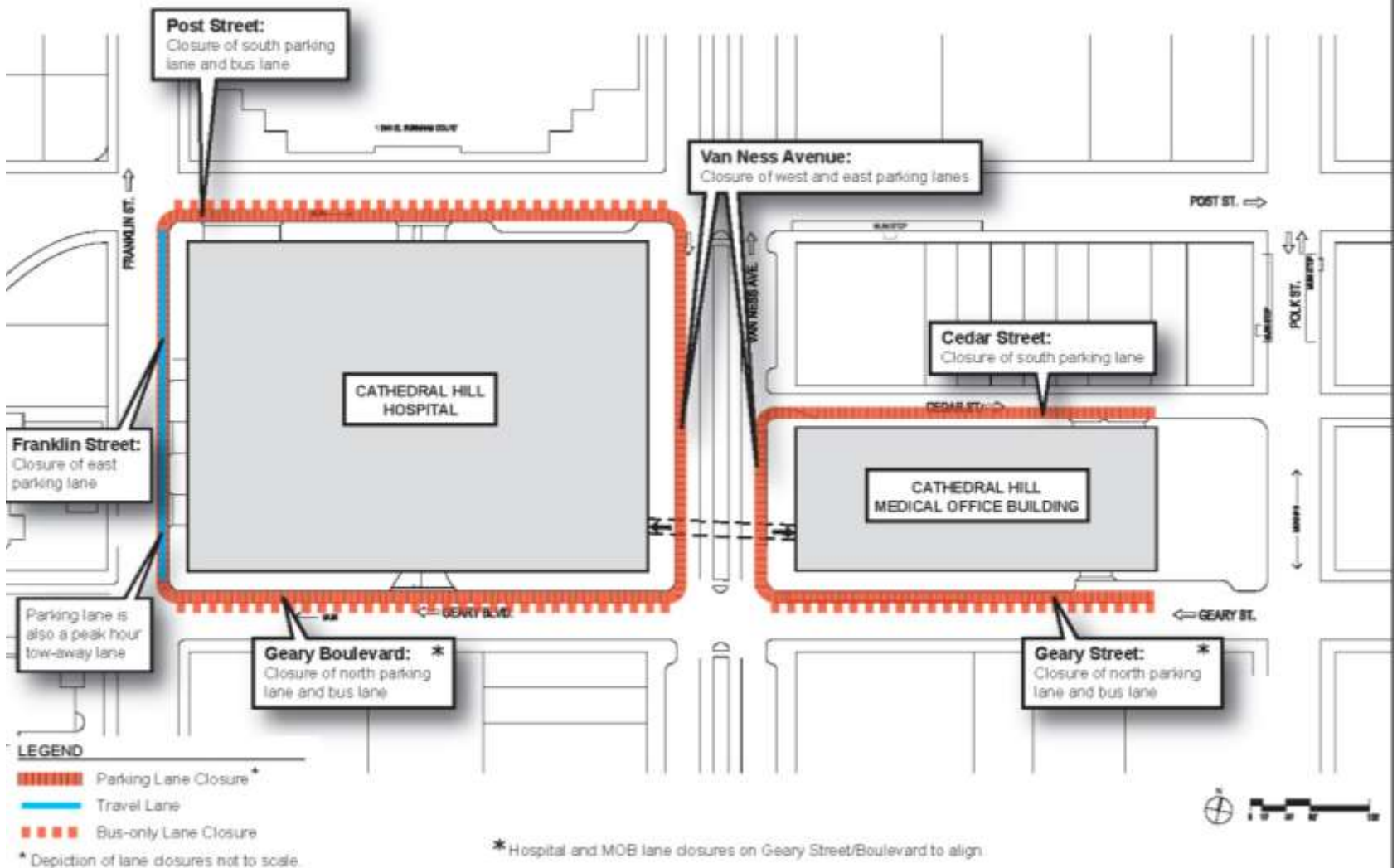
Vehicular Access & Loading: Cathedral Hill Medical Office Building



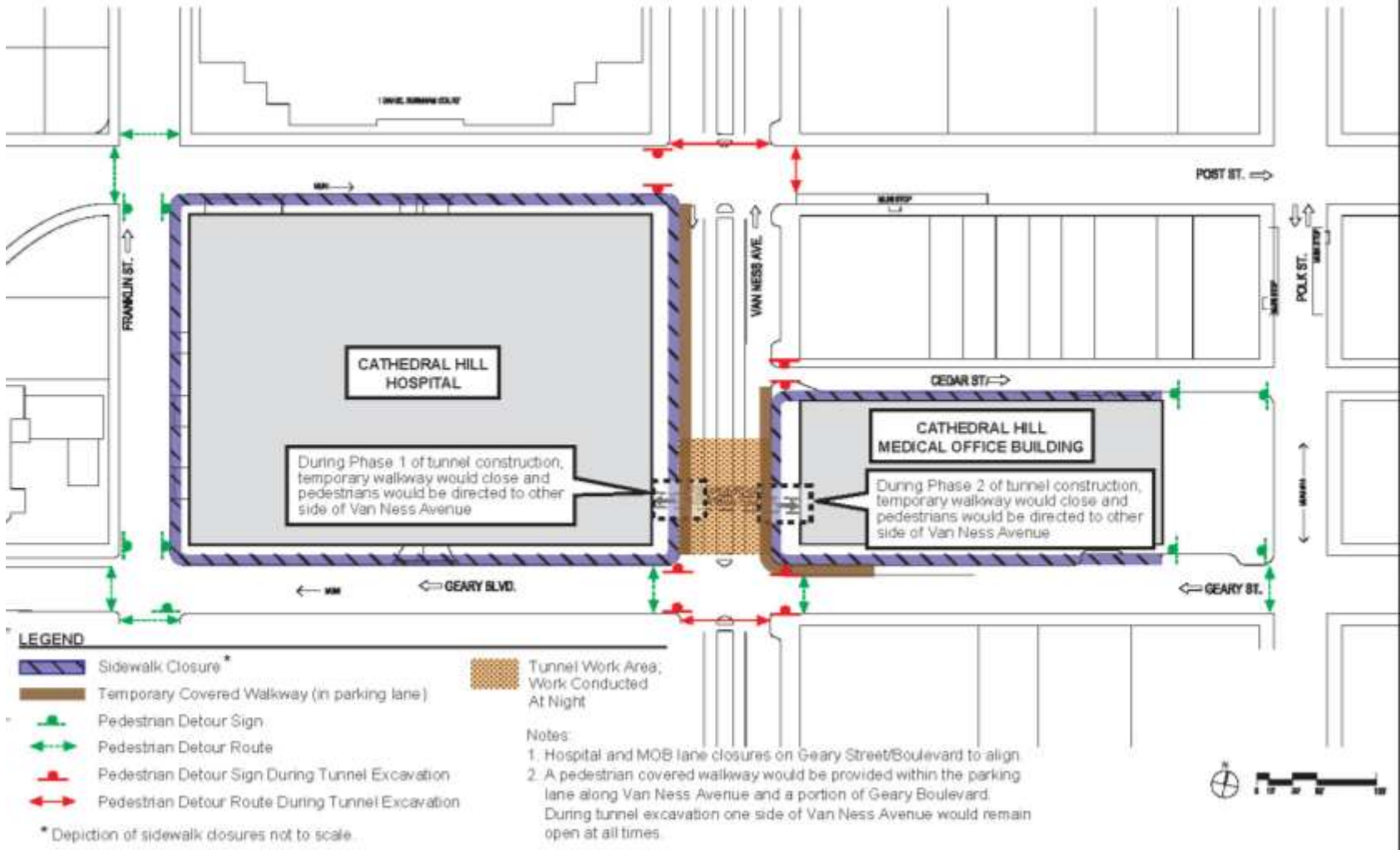
Construction Truck Routes: *Cathedral Hill Campus*



Construction Temporary Lane Closures: Cathedral Hill Campus



Construction: Temporary Sidewalk Closures & Pedestrian Tunnel Construction



CPMC Transportation Funding

Bus Rapid Transit Projects - \$5 million

- Geary Bus Rapid Transit (BRT)
- Van Ness Bus Rapid Transit (BRT)

Transit Use and Support for Transit Services - \$5 million

- Fee of \$500,000 per year for 10 years
- \$0.50 off-peak and \$0.75 peak for each entry and exit at the Cathedral Hill Hospital and Medical Office Building garages
- Improve transit service to encourage people traveling to or from the Cathedral Hill Campus to use non-private automobile

Transit Delay - \$10.4 million

- Implementation of the Transit Effectiveness Project (TEP) capital needs such as the travel time improvement projects on the 14 Mission and 38 Geary
- Transit System Spot Improvements on the Muni Rapid Network (bulb outs, signage, etc.)
- Transit Signal Priority Improvements on the Rapid Network
- Equipment to support on time departures and system reliability (e.g. cameras)

Bicycle /Traffic Calming Studies and Planning - \$400,000

- Bicycle route and improvement planning
- Design alternatives for improved bicycle facilities on Polk Street
- Traffic Calming and other improvements along the “Wiggle” Bicycle Route
- Design of Traffic Calming improvements along 26th Street

RECOMMENDATION

The SFMTA Board:

- Authorizes the Director of Transportation to execute the SFMTA Consent to the Development Agreement between the City and County of San Francisco and Sutter West Bay Hospitals relating to construction and reconstruction of CPMC facilities.
- Approve the proposed transportation-related changes associated with the construction and reconstruction of CPMC healthcare facilities.