



SFMTA

Municipal
Transportation
Agency

On-Street Car Share Parking Permit Program

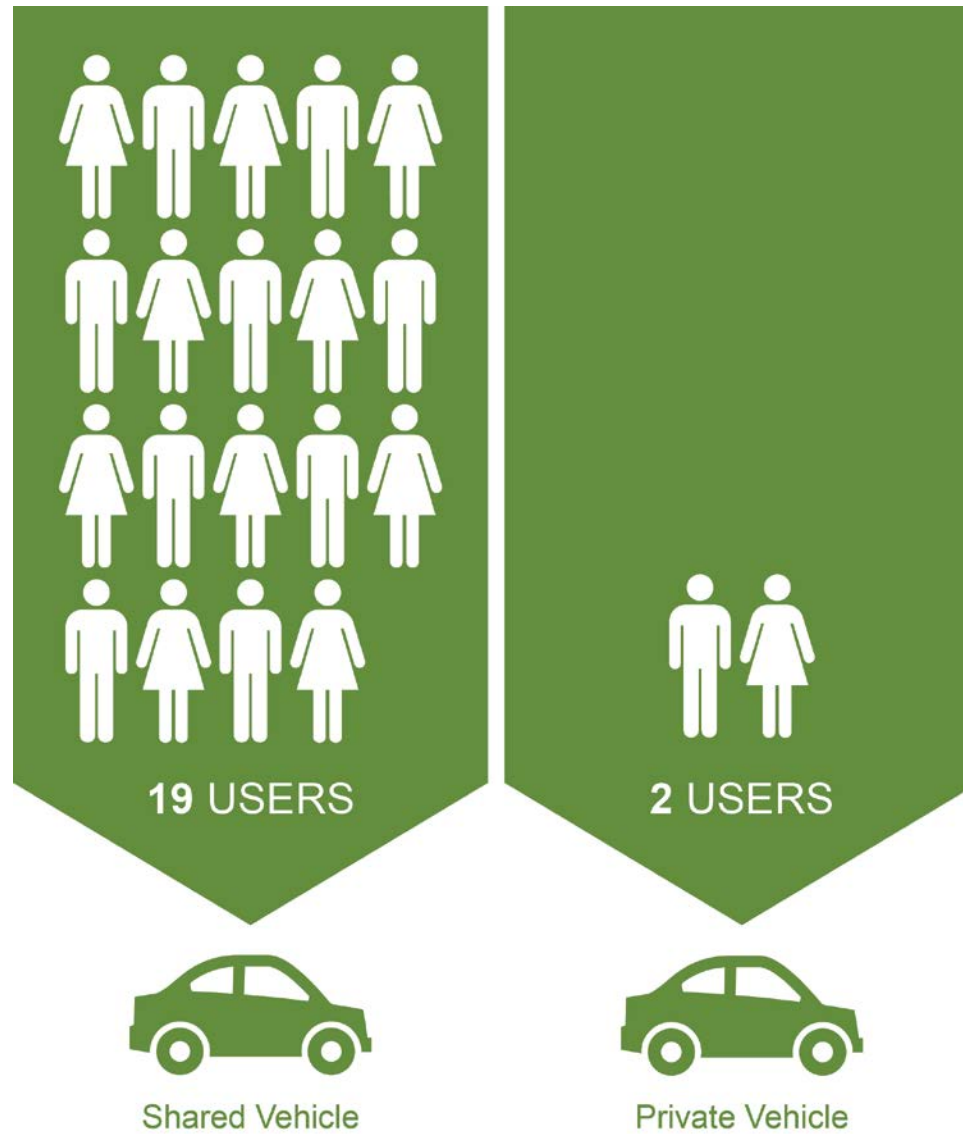
SFMTA Citizens' Advisory Council
Operations and Customer Service Committee
March 14, 2017

Premise of Pilot

- Reduces number of private vehicles in SF
- Reduces congestion & emissions
- Increases mobility options
- Relieves parking demand

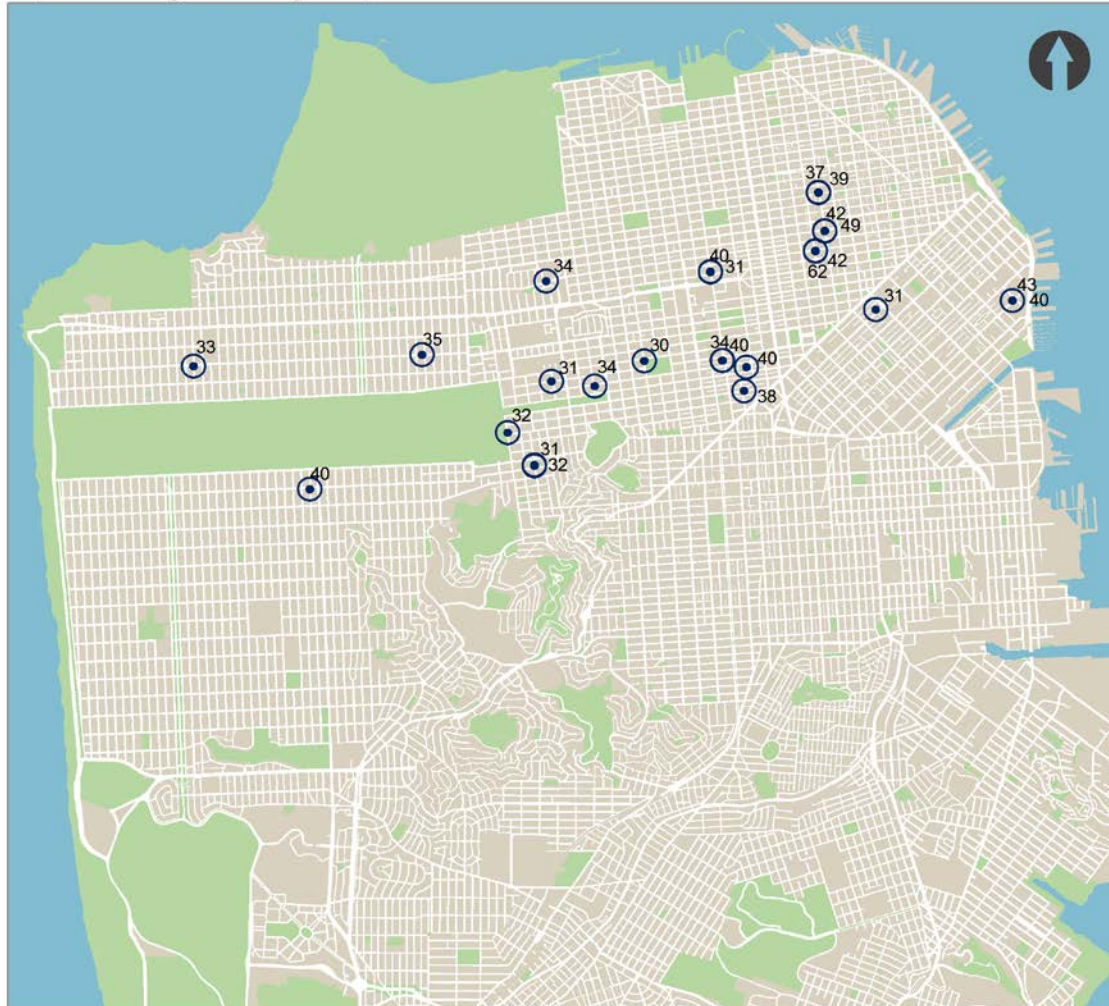


Findings



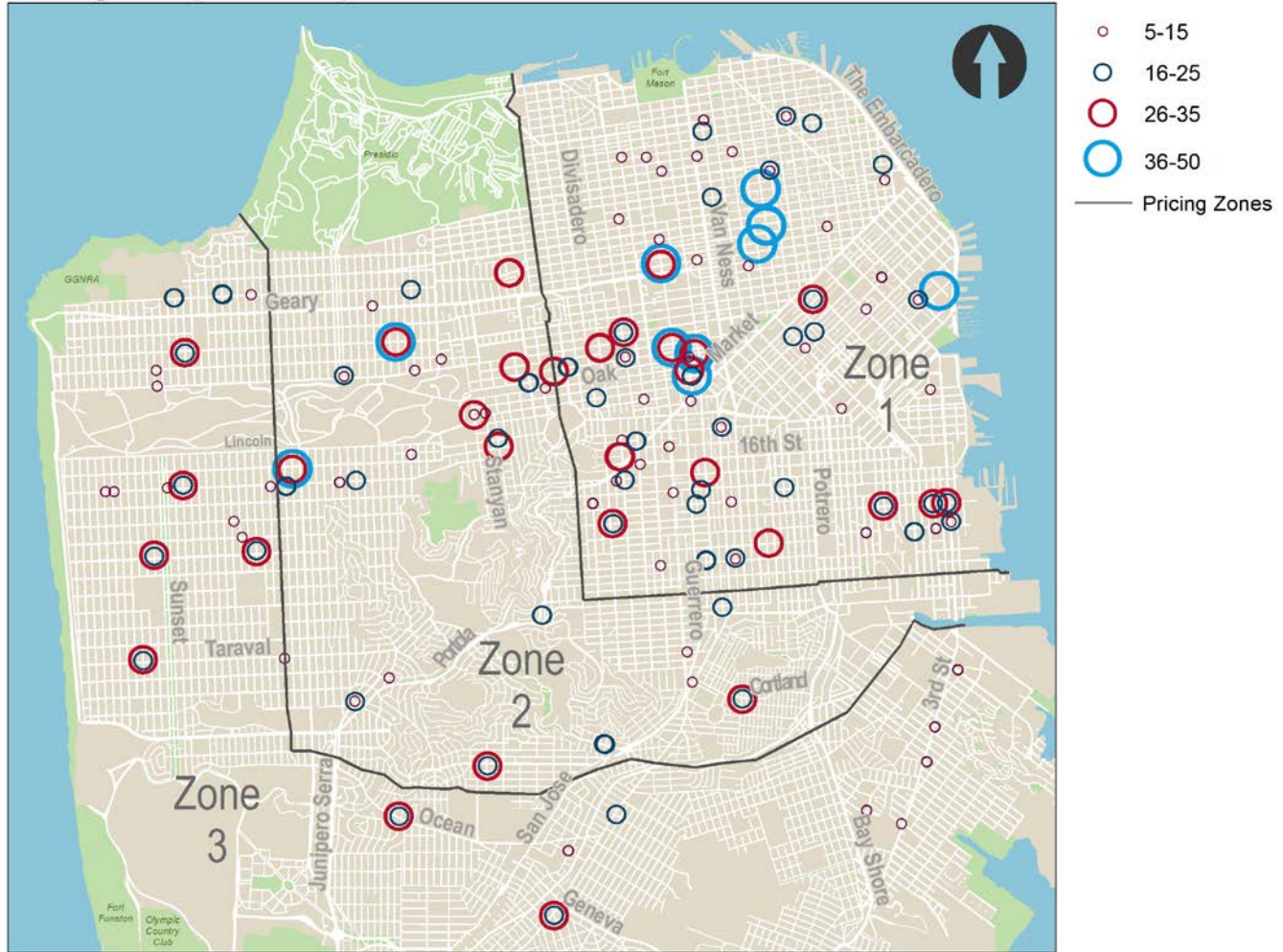
Findings

Top 25 average monthly unique users



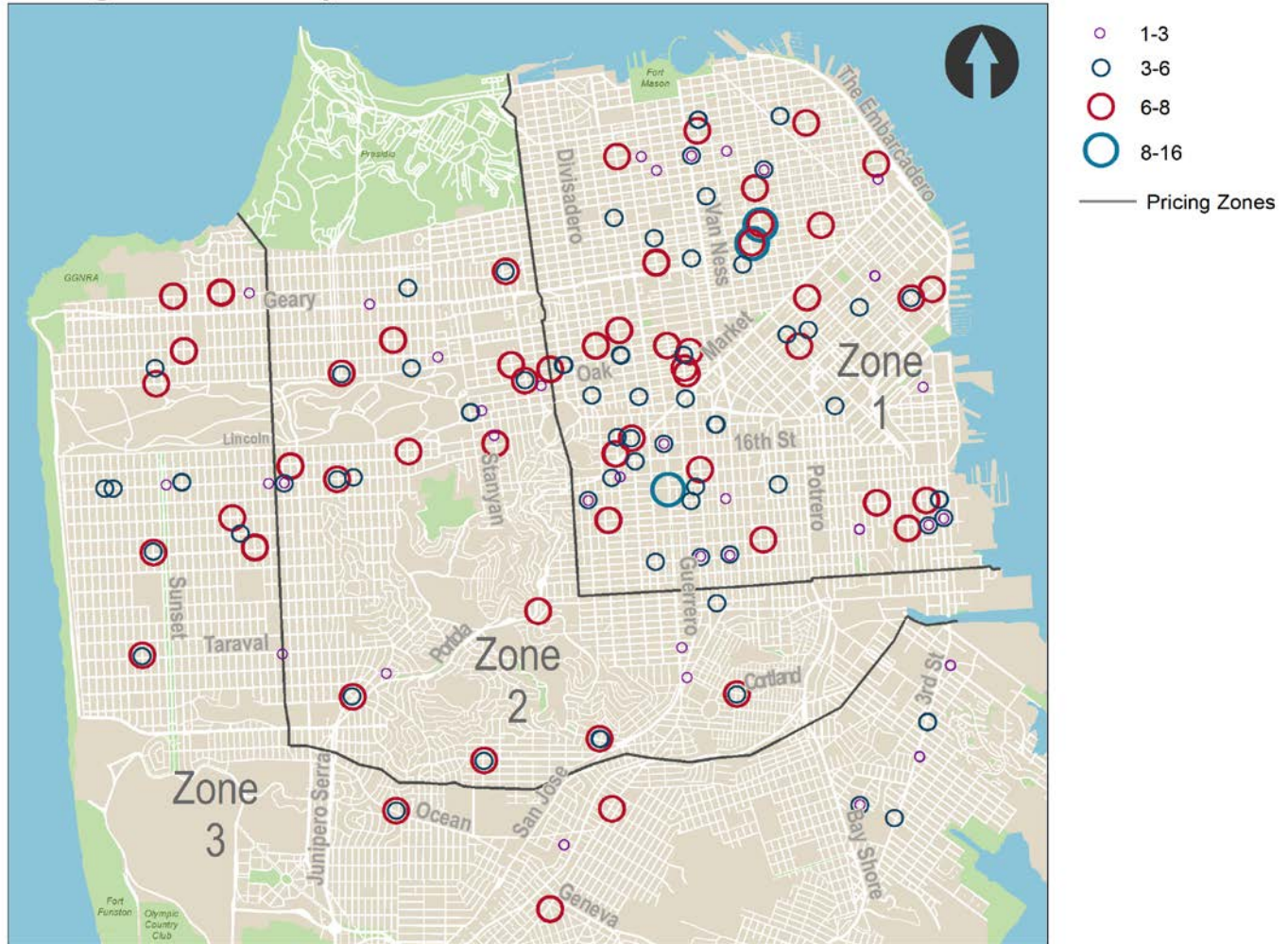
Findings

Average unique users per month



Findings

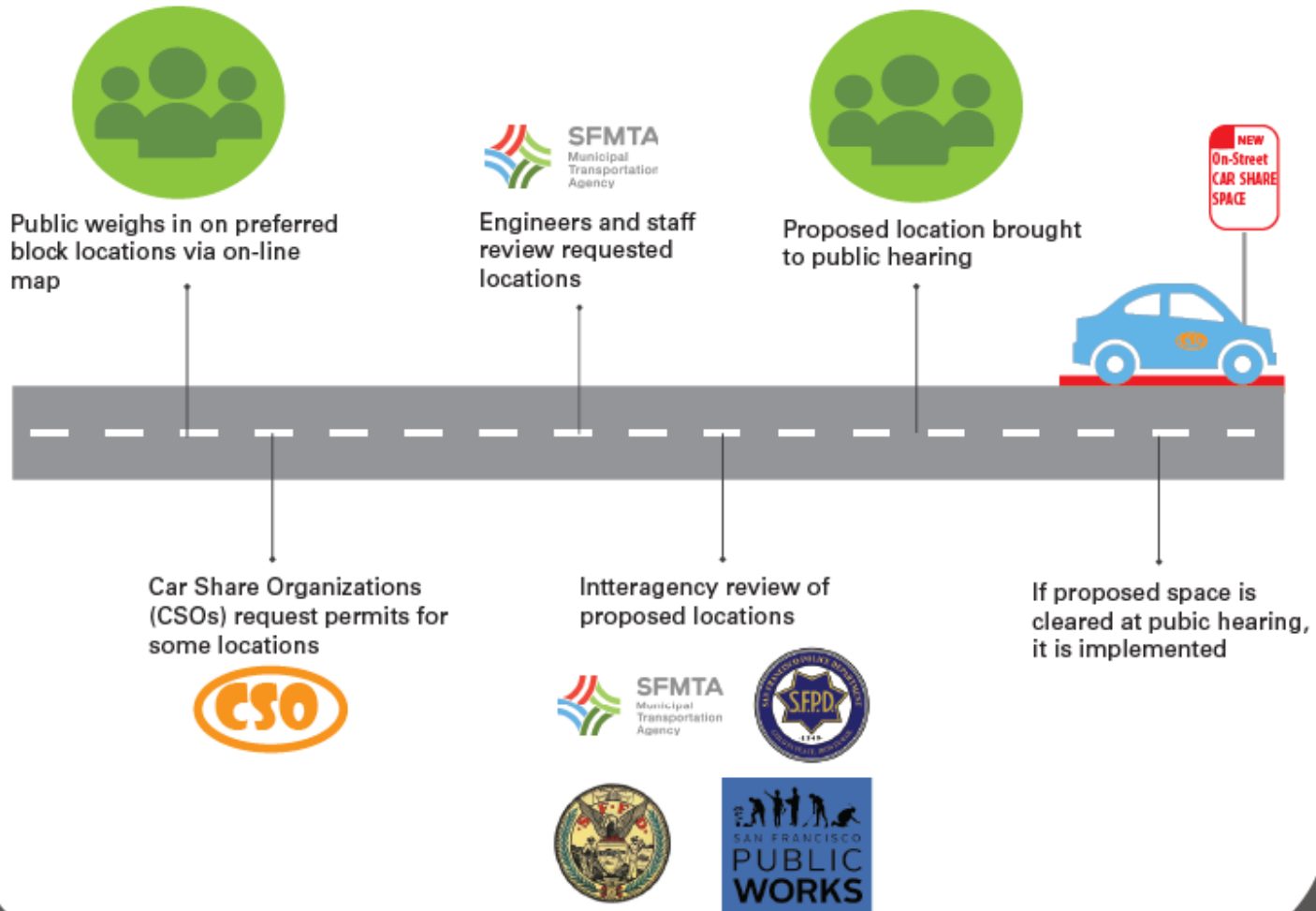
Average hours of daily use



- Recalculate permit fees
- Keep pricing zones and 15% requirement
- Align “Car Share” definition with other City code
- Refined guidance for space location, public review process
- Set and monitor utilization minimums
- Address construction closure conflicts



How does an on-street car share space get added?



Next Steps

- **April:** Operational On-Street Permit Program proposal to SFMTA Board of Directors
- **Ongoing:** Reauthorize/permit Pilot spaces, request for participation, work with public on block specific locations, legislate and implement new spaces, continue to harmonize shared-mobility options and curb efficiency

Thank you!

On-Street Car Share Pilot webpage:

[sfmta.com/projects-planning/projects/car-sharing-policy-and-pilot-project](https://www.sfmta.com/projects-planning/projects/car-sharing-policy-and-pilot-project)