



SFMTA
Municipal
Transportation
Agency

Mission Bay Loop Project

Operations & Customer Service Committee

August 9, 2016

Overview



- Enables the SFMTA to more efficiently respond to delays and gaps in service
- Provides service flexibility for the T-Third Line by removing disabled trains off of 3rd Street

Community Outreach Efforts

- Community meetings
 - Dogpatch Neighborhood Association
 - Potrero-Dogpatch Merchants Association
 - Potrero Boosters
 - Ballpark Mission Bay Transportation Coordinating Council Committee
 - Bayview Residents Improving Their Environment (BRITE)
 - BRITE Business Alliance
 - Bayview Hill Neighborhood Association
 - India Basin Neighborhood Association
- Safety around construction presentations with Alt School and Potrero Kids Preschool
- Direct mailings
- Public postings around the project area
- Dedicated project web page
- E-mail notifications
- Social media

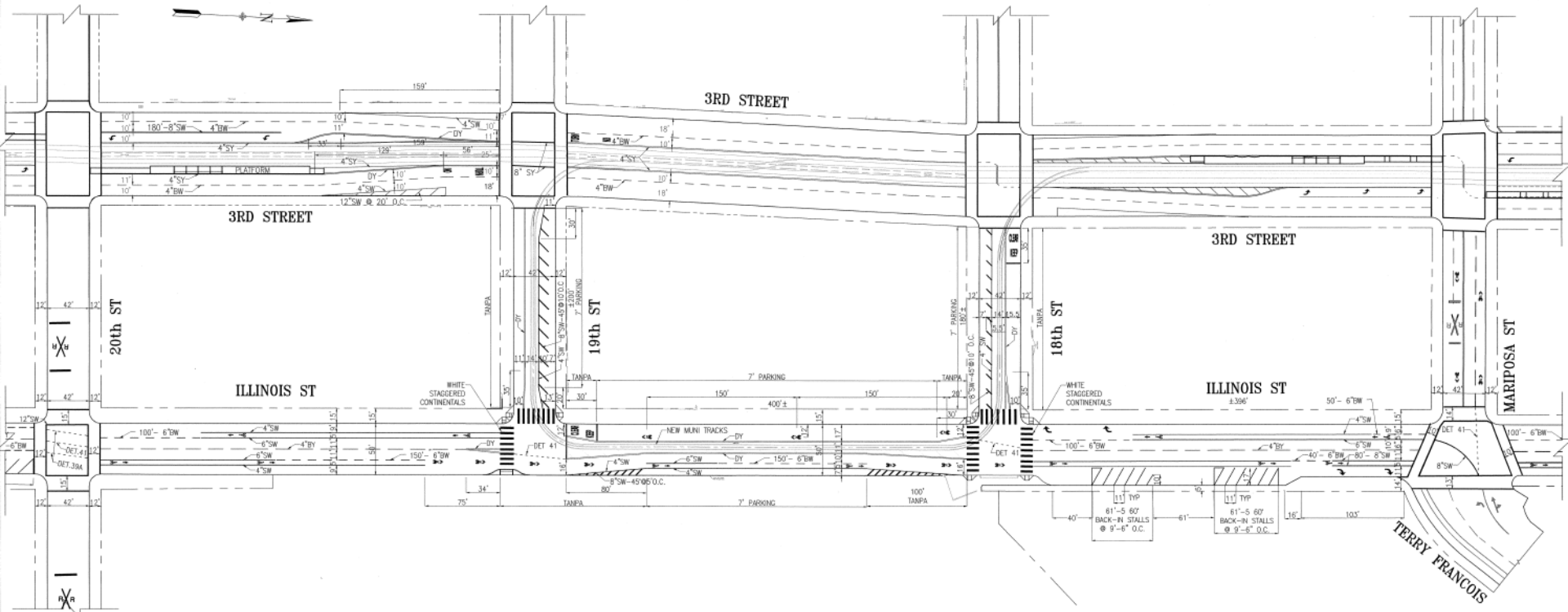
Project Scope

Eight month construction period:

- Complete track
- New Sidewalk
- New pavement
- New street lighting
- New overhead light rail lines
- Traffic signals at 18th, 19th and Illinois Streets

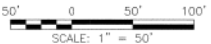


Striping Plan



GENERAL NOTES:

- 1. THE CONTRACTOR SHALL USE THIS DRAWING TO PREPARE TRAFFIC CONTROL PLANS.
- 2. THE CONTRACTOR SHALL VERIFY ALL MEASUREMENTS IN THE FIELD.
- 3. ALL CROSSWALKS & STOP LINES SHALL BE 12" WIDE & WHITE IN COLOR UNLESS NOTED OTHERWISE.



Contact

David Greenaway, Project Manager

David.Greenaway@sfmta.com

(415) 701-4237

Adrienne Heim, Public Information Officer

Adrienne.Heim@sfmta.com

(415) 701-5472











SFMTA
Municipal
Transportation
Agency

Balboa Park Station Area Improvements

Operations & Customer Service Committee
August 9, 2016

Project Overview Map



-  Sidewalk Widening
-  Median Island Relocation and Landscaping
-  Red Transit Lanes
-  Pedestrian Lighting
-  Curb Ramp Upgrades
-  Trolley Pole Relocation off J/K Walkway
-  Flashing Beacons
-  Traffic & Train Signal Upgrades

Construction Update

COMPLETE:

- Storm drain relocation, sidewalk widening and concrete bus pads on Geneva Ave.
- Median island relocation and widening.
- Ocean Ave I-280 flashing beacon work to improve pedestrian safety.
 - Flashing beacons
 - Base repair
 - Grinding & paving

CURRENTLY IN PROGRESS:

- Median Island landscaping
- Curb ramp upgrades
- Pedestrian Lighting

NEXT STEPS:

- Red Transit Lanes on Geneva Ave to improve transit service and reliability.
- Relocation of J/K Trolley Poles to improve walkway safety and accessibility.
- Ocean Ave I-280 North on-ramp intersection work.
 - Traffic Signal upgrades
 - Train signal upgrades
 - Curb ramp upgrades
 - Track replacement and tamping
 - Pedestrian lighting
 - Pavement restoration

Construction Update

COMPLETE:

- Storm drain relocation, sidewalk widening and concrete bus pads on Geneva Ave.
- Median island relocation and widening.
- Ocean Ave I-280 flashing beacon work to improve pedestrian safety.
 - Flashing beacons
 - Base repair
 - Grinding & paving

CURRENTLY IN PROGRESS:

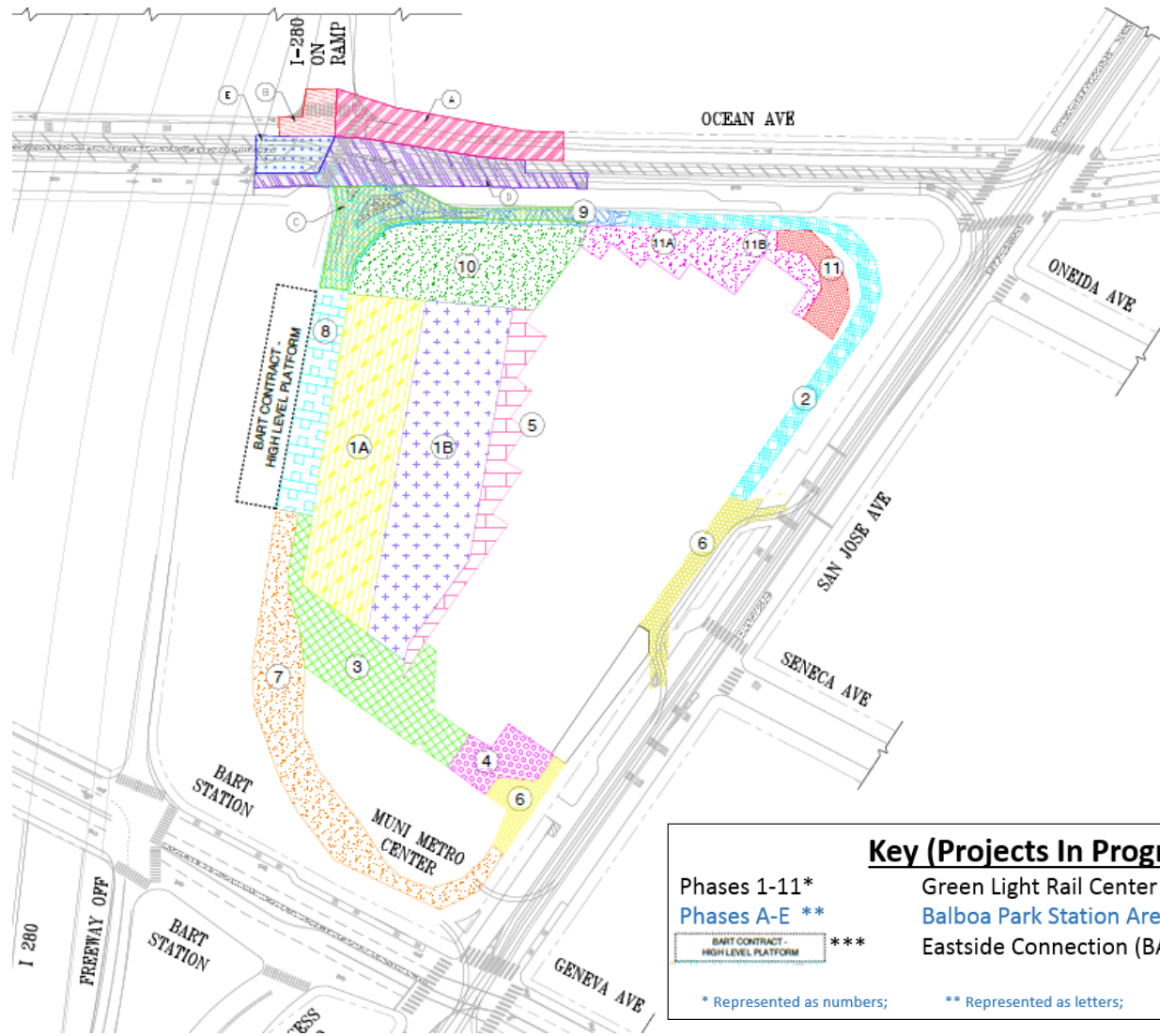
- Median Island landscaping
- Curb ramp upgrades
- Pedestrian Lighting

NEXT STEPS:

- Red Transit Lanes on Geneva Ave to improve transit service and reliability.
- Relocation of J/K Trolley Poles to improve walkway safety and accessibility.
- Ocean Ave I-280 North on-ramp intersection work.
 - Traffic Signal upgrades
 - Train signal upgrades
 - Curb ramp upgrades
 - Track replacement and tamping
 - Pedestrian lighting
 - Pavement restoration

Moving Forward

Construction Phasing Plan



Key (Projects In Progress)

Phases 1-11*

Phases A-E **

BART CONTRACT - HIGH LEVEL PLATFORM ***

Green Light Rail Center Track Replacements

Balboa Park Station Area & Plaza Improvements

Eastside Connection (BART)

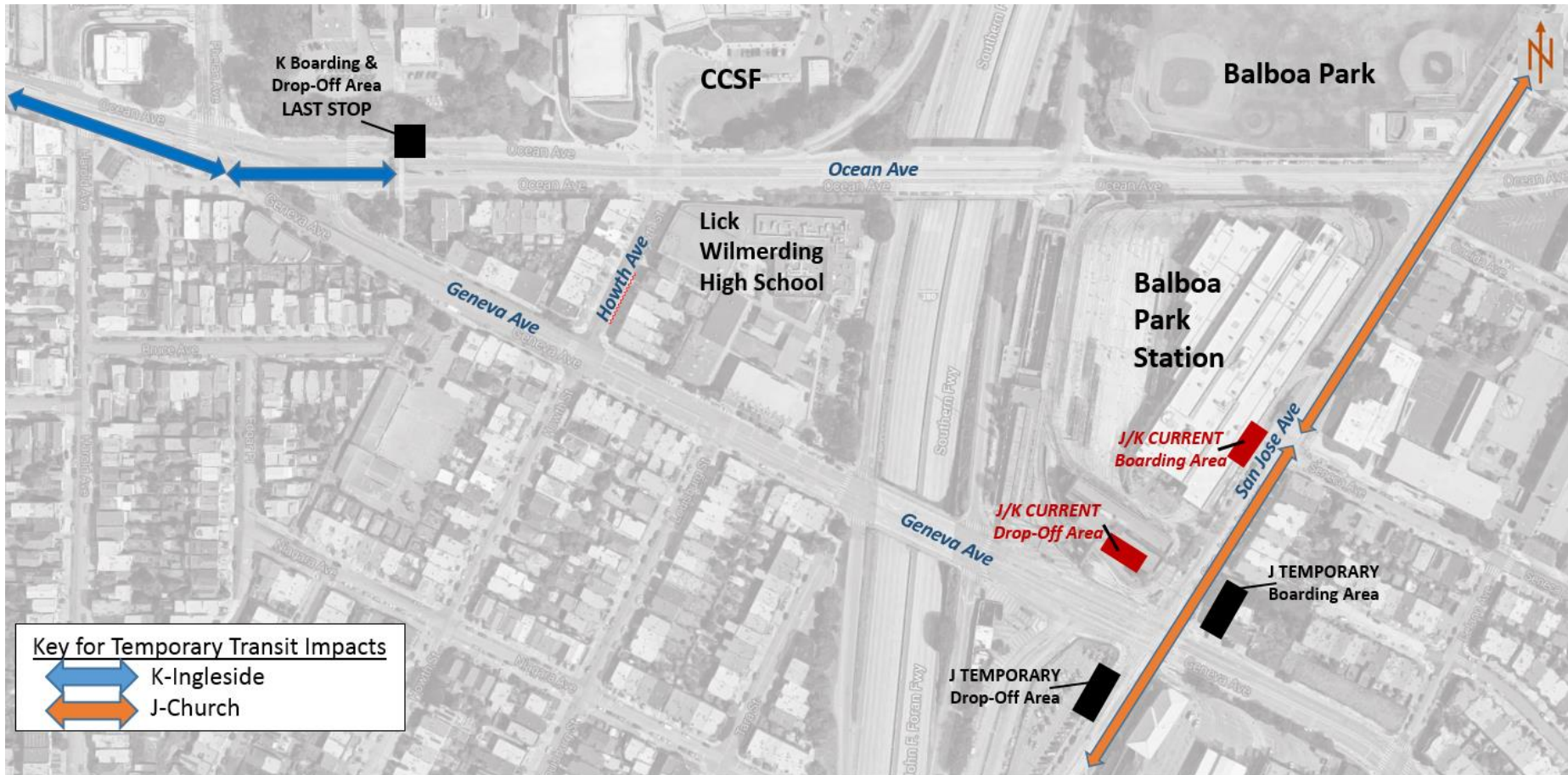
* Represented as numbers;

** Represented as letters;

*** BART's boarding platform

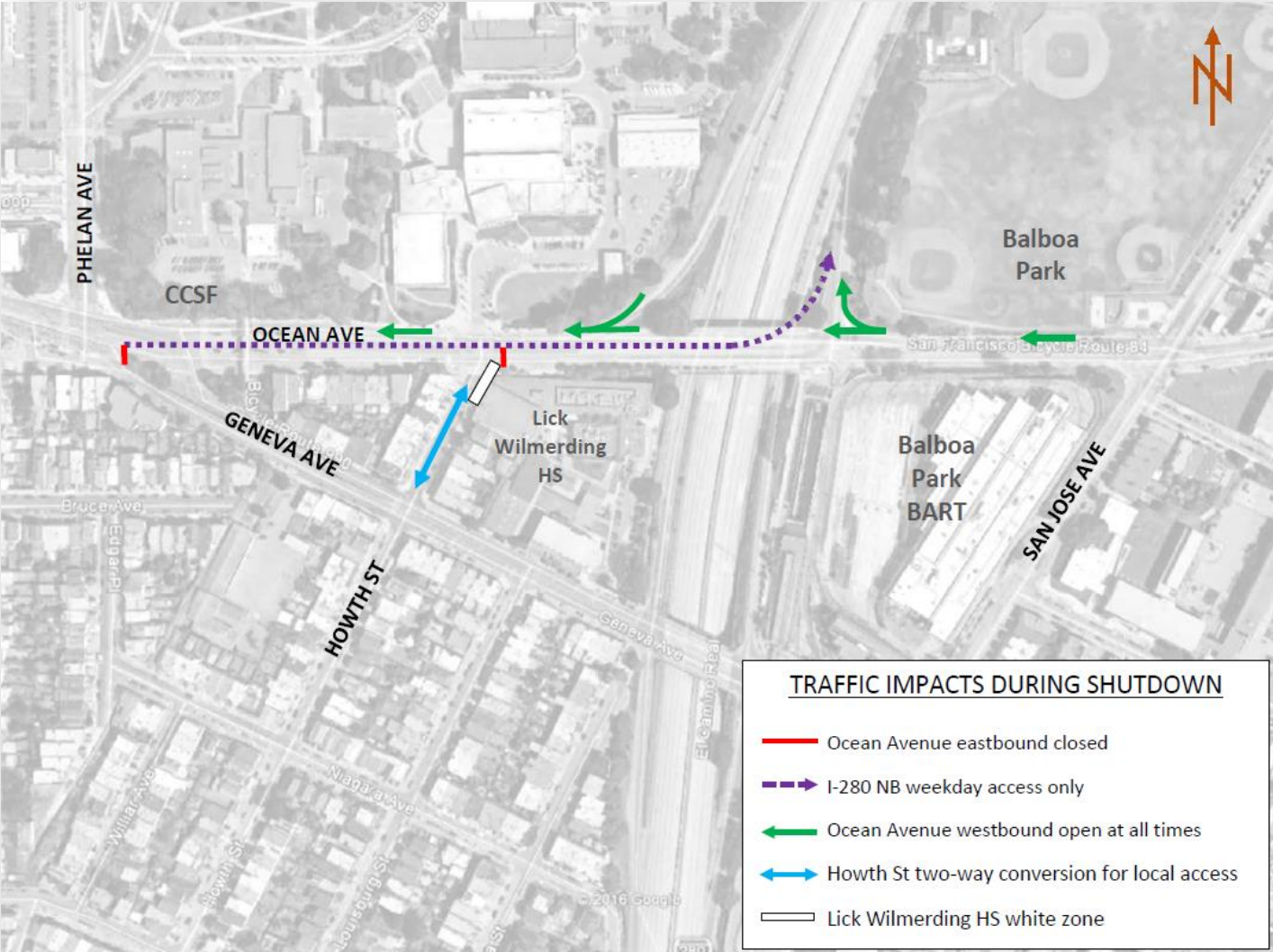
Transit Impacts

J-Church and K-Ingleside Reroutes *Approximately 3 months, Fall 2016*



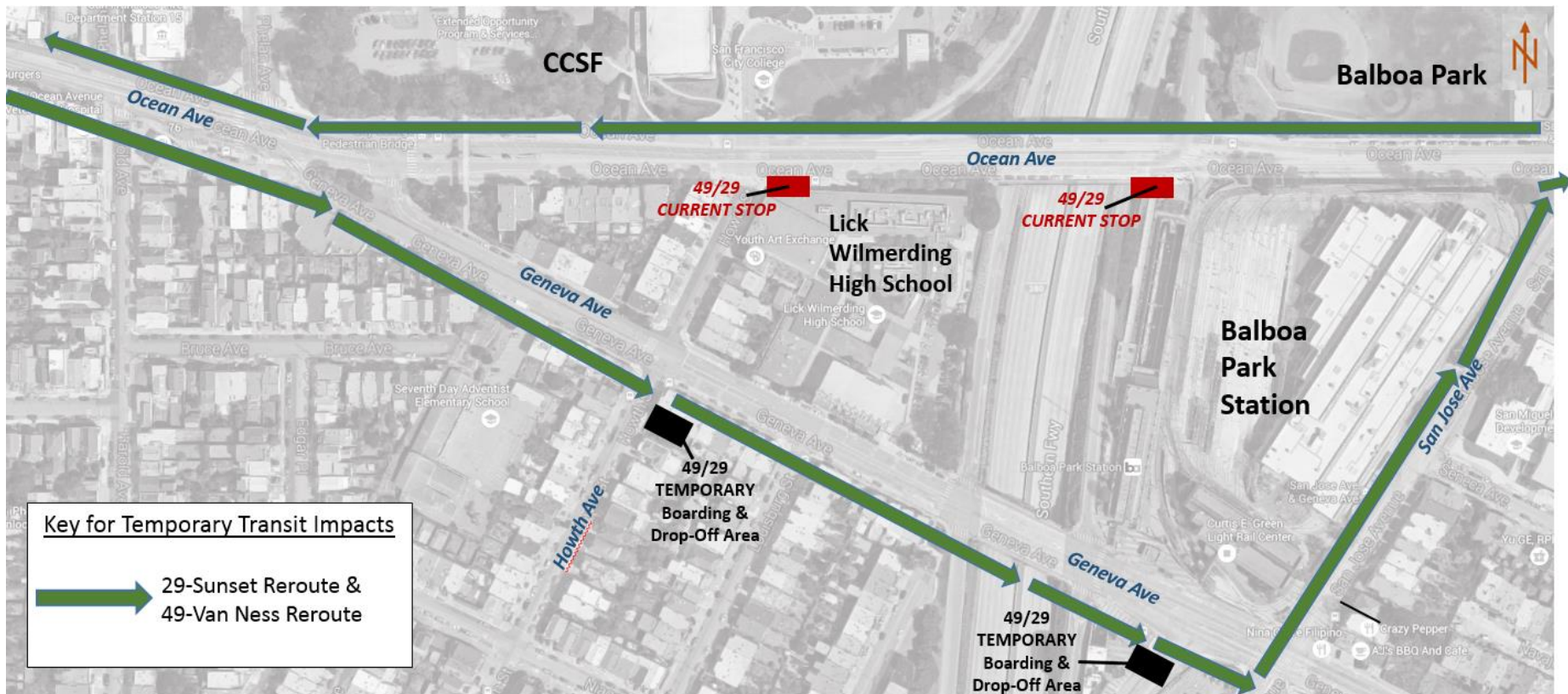
Moving Forward – Traffic Impacts

Ocean Ave Work, 3-Weeks



Transit Impacts

Eastbound 29-Sunset and 49-Van Ness Approximately 3 Weeks, Fall 2016



Community Outreach Efforts

TRAFFIC-RELATED IMPACTS

- Meeting with Lick Wilmerding
- Meeting with CCSF
- Notifications mailed to residents on Howth St., Geneva Ave., Louisburg St. and Tara St.
- Variable Message Signs (VMS)

TRANSIT-RELATED IMPACTS

- Ambassador support
- Customer alert signs
- Muni alert text and email messages
- Vehicle announcements to all affected routes.
- Nextbus announcements on buses

ALL IMPACTS

- Notification to community groups in the area.
- Notification to schools, daycare centers and houses of worship in the area.
- Notification to merchants on Ocean Ave
- Media advisory
- Social media
- Blog post
- Planned Alert on SFMTA website
- Email message to 172 project subscribers
- Notify other city agencies, Rec & Park, SFPD, SFFD, etc.