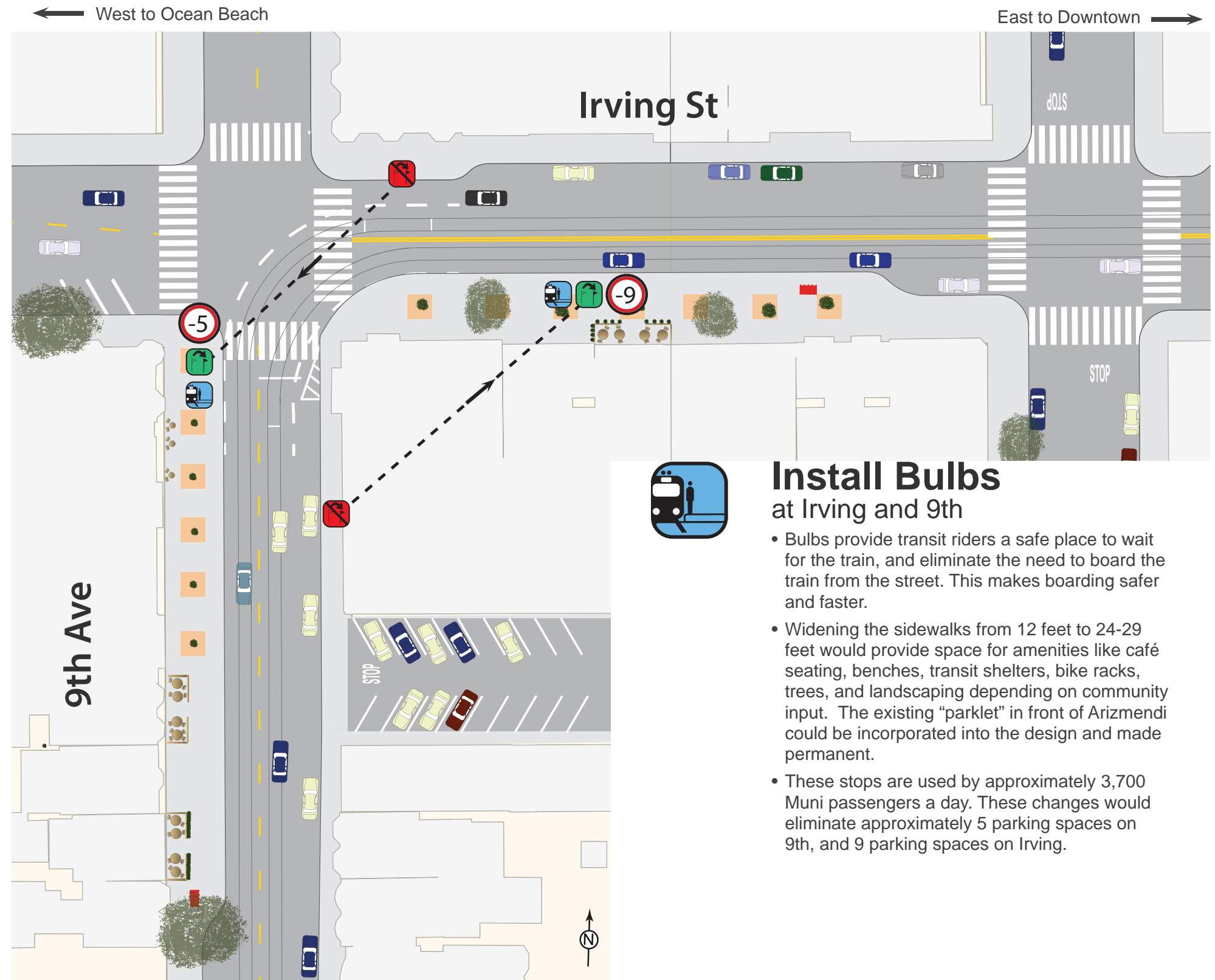


Relocate Stops at Irving and 9th from before traffic signal to after traffic signal

- Placing the transit stops on the other side of the traffic light would let Muni get through the intersection prior to loading and unloading.
- All users of the intersection would benefit because the train would require less time to clear the intersection.
- Passengers would save time and Muni would be more reliable.



Install Bulbs at Irving and 9th

- Bulbs provide transit riders a safe place to wait for the train, and eliminate the need to board the train from the street. This makes boarding safer and faster.
- Widening the sidewalks from 12 feet to 24-29 feet would provide space for amenities like café seating, benches, transit shelters, bike racks, trees, and landscaping depending on community input. The existing “parklet” in front of Arizmendi could be incorporated into the design and made permanent.
- These stops are used by approximately 3,700 Muni passengers a day. These changes would eliminate approximately 5 parking spaces on 9th, and 9 parking spaces on Irving.