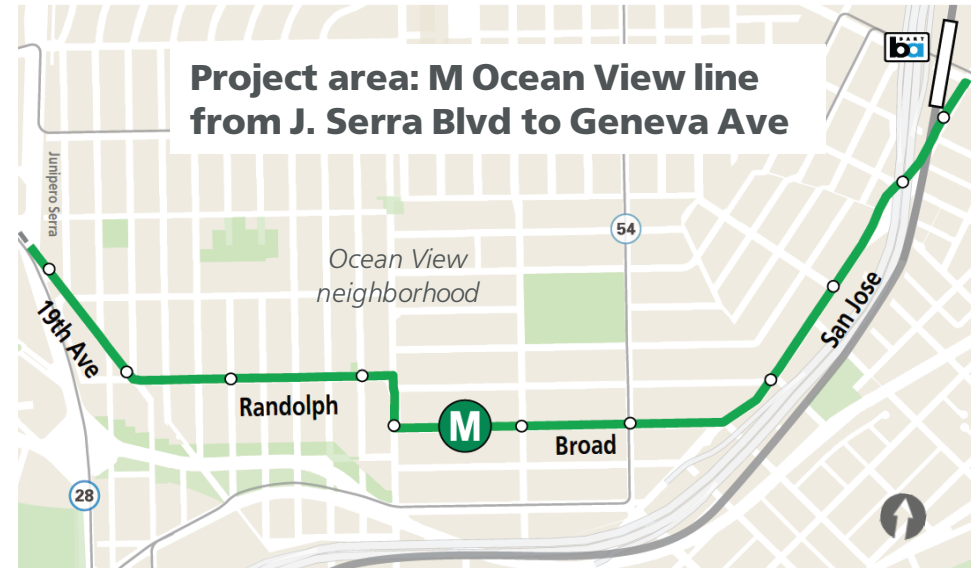


SFMTA - TASC SUMMARY SHEET

<p>PreStaff_Date: 1/2/2024</p> <p>Requested_by: SFMTA</p> <p>Handled: Edgar Orozco <i>DA</i></p> <p>Section Head : CL/MV <i>Cheryl Liu</i></p>	<p><input type="checkbox"/> Public Hearing Consent</p> <p><input checked="" type="checkbox"/> Public Hearing Regular</p> <p><input type="checkbox"/> Informational / Other PH - Regular</p>	<p>No objections: _____</p> <p>Item Held: _____</p> <p>Other: _____</p>
<p>Location: Monticello St at 19th Avenue</p>		
<p>Subject: Left Turn Only; Tow-Away, No Stopping Any Time</p>		
<p>PROPOSAL / REQUEST: ESTABLISH - LEFT TURN ONLY Monticello Street, southbound, at 19th Avenue</p> <p>ESTABLISH - TOW-AWAY, NO STOPPING ANY TIME Monticello Street, east side, from 19th Avenue to 60 feet northerly</p> <p>(Supervisor District 11)</p> <p>A transit boarding island for inbound M Ocean View trains is proposed to be built partly through the intersection of Monticello Street and 19th Avenue. This proposal will inhibit the right-turn movement from southbound Monticello onto 19th Avenue.</p> <p>Edgar Orozco, edgar.orozco@sfmta.com</p>		
<p>BACKGROUND INFORMATION / COMMENTS</p> <p>*This proposed change is a part of the greater M Ocean View Transit and Safety project, which was approved at TASC on September 28, 2023.</p> <p>*Based on community feedback, the project team is proposing a change from the original transit boarding island proposal at 19th and Monticello.</p> <p>*The adjacent building (Salvation Army) has asked that the project team leave curb space available in front of their main entrance for loading.</p> <p>*This new design still accomodates a two-car Muni train, an accessible ramp, a shelter, access into the building driveway, and a protected bike path.</p>		
<p>HEARING NOTIFICATION AND PROCESSING NOTES:</p>	<p>ENVIRONMENTAL CLEARANCE BY:</p> <p><input checked="" type="checkbox"/> SFMTA <input type="checkbox"/> Attached <input type="checkbox"/> Pending</p>	
<p>CHECK IF PREPARING SEPARATE SFMTA BOARD CALENDAR ITEM FOR PROPOSAL: <input type="checkbox"/></p>		

Project overview

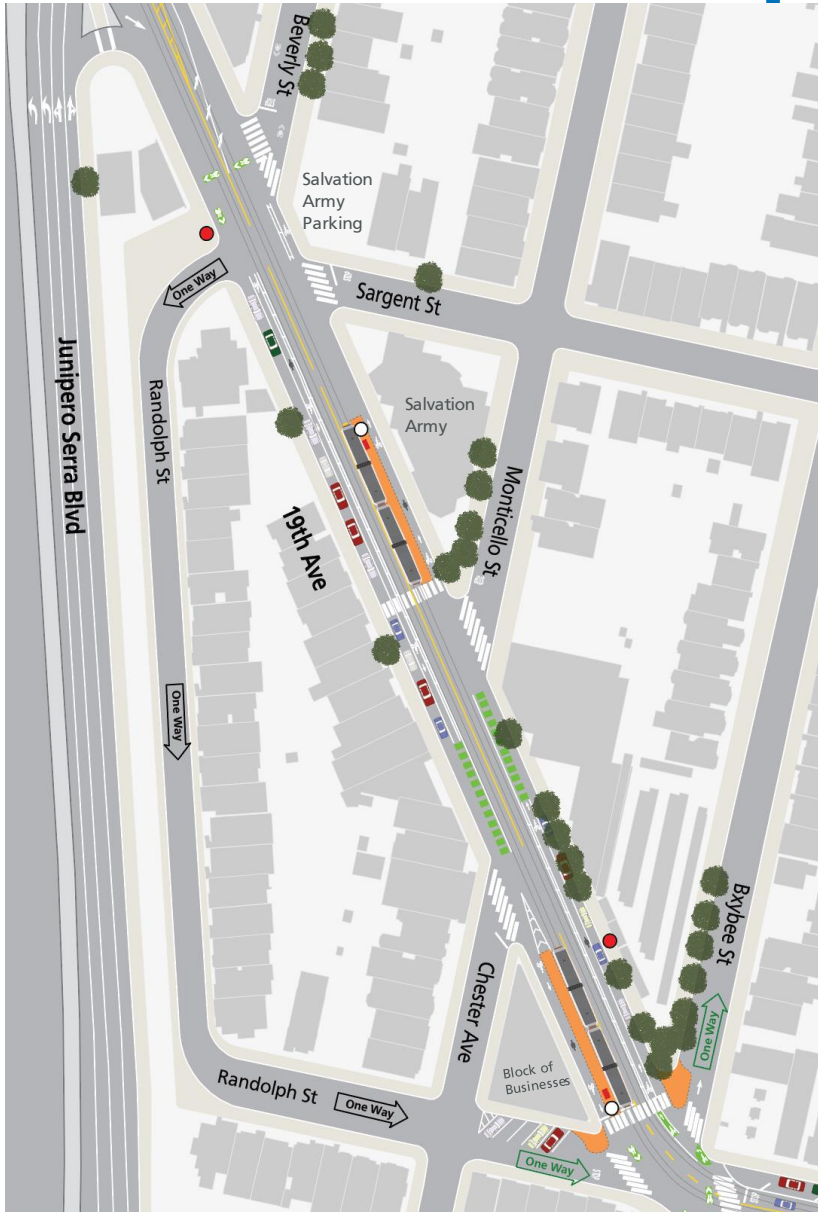
- Muni Forward capital project on M-line in the Ocean View to improve:
 - Reliability
 - Customer experience
 - Muni accessibility
 - Traffic safety
- Benefits 18,000 daily riders on M Ocean View
- Supports Muni Service Equity Strategy



19th Ave & Junipero Serra – Current stop



19th Avenue – Spring proposal



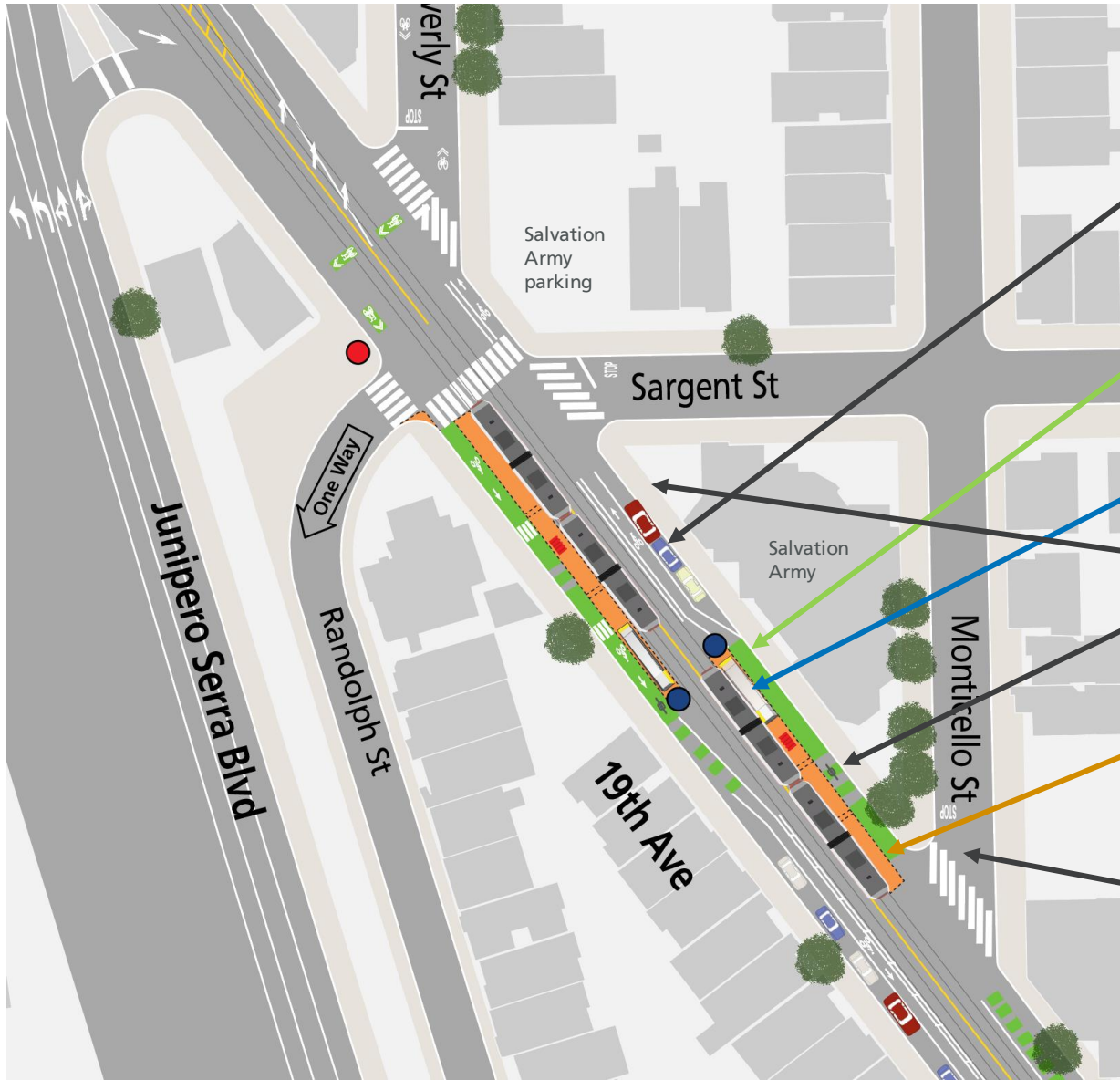
- Stop consolidation proposal had split inbound & outbound stop pairs
- Outbound stop was farther from OMI Center and other destinations on Beverly Boulevard
- No wheelchair-accessible ramps on either island

19th Avenue – Summer proposal



- Shifted inbound & outbound stops across from each other to bring riders closer to key destinations on 19th Avenue and reduce rider confusion
- Added wheelchair-accessible ramps

19th Avenue – Current proposal



Three parking spaces preserved by front doors of Salvation Army next to bike lane

Boarding island-protected bike lane

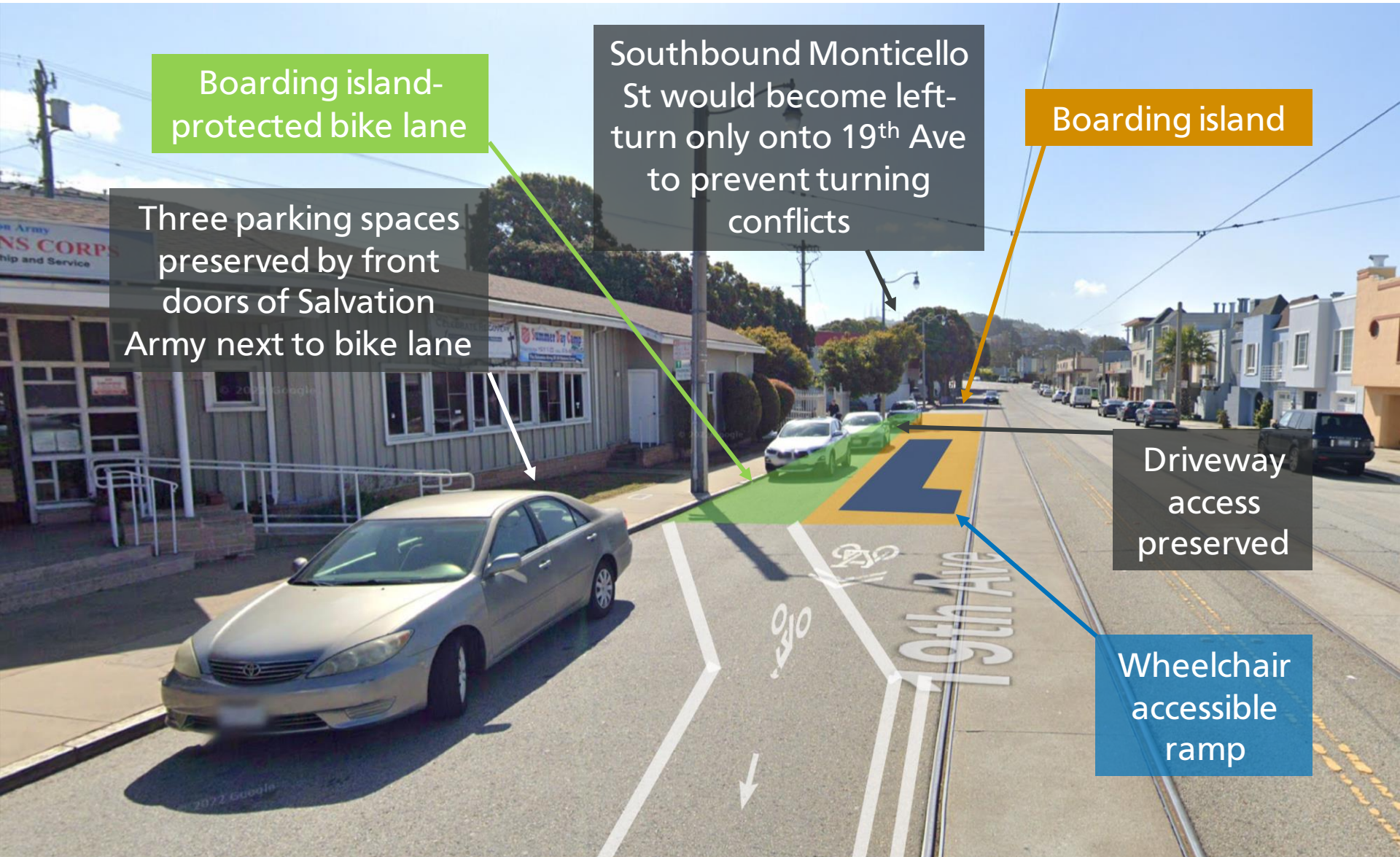
Wheelchair accessible ramp

Front & back driveway access preserved

Boarding island

SB Monticello St would become left-turn only onto 19th Ave to prevent turning conflicts

19th Ave – Proposal rendering facing south



Boarding island-protected bike lane

Three parking spaces preserved by front doors of Salvation Army next to bike lane

Southbound Monticello St would become left-turn only onto 19th Ave to prevent turning conflicts

Boarding island

Driveway access preserved

Wheelchair accessible ramp

19th Ave – Proposal rendering facing north

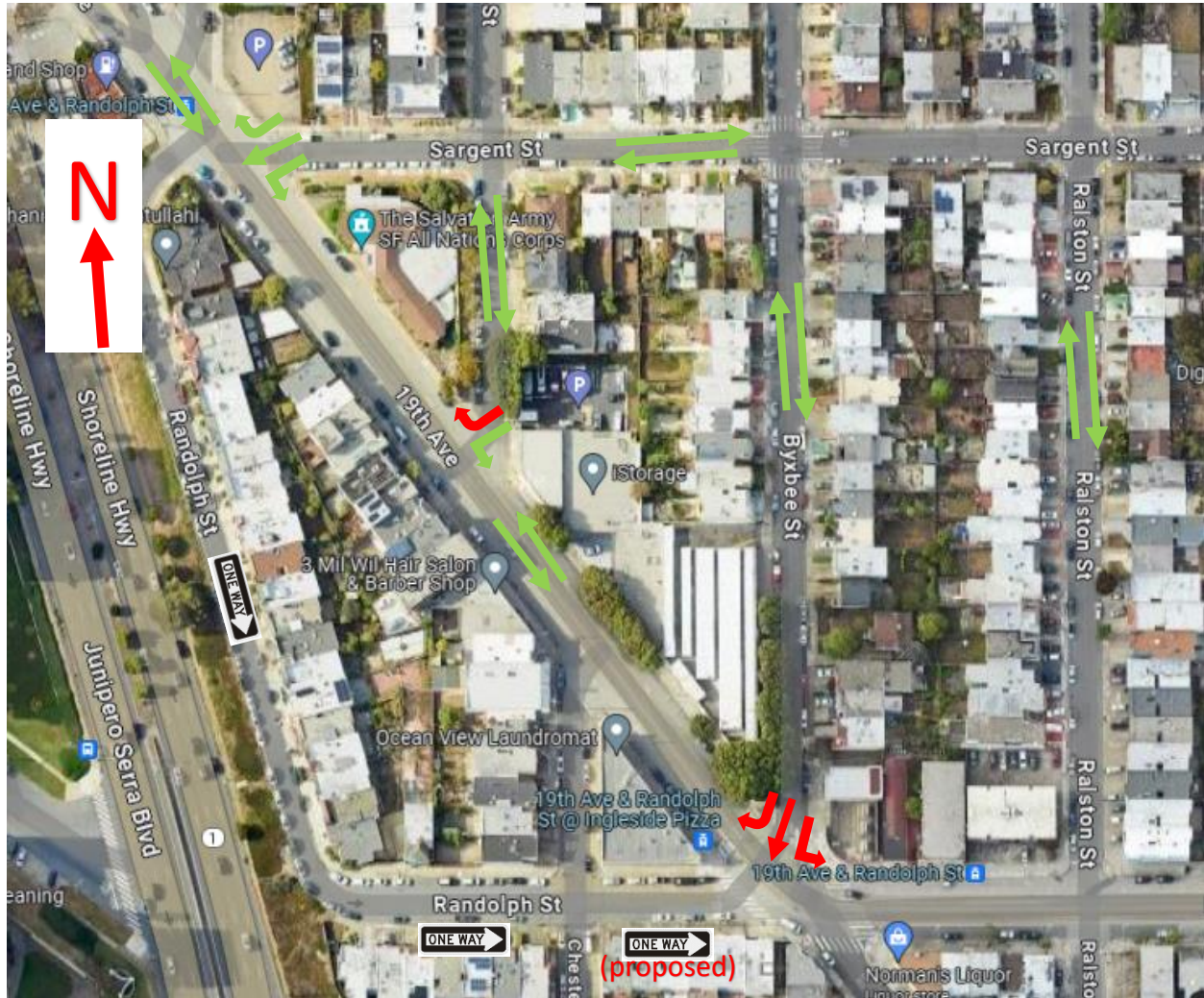


Three parking spaces preserved by front doors of Salvation Army next to bike lane

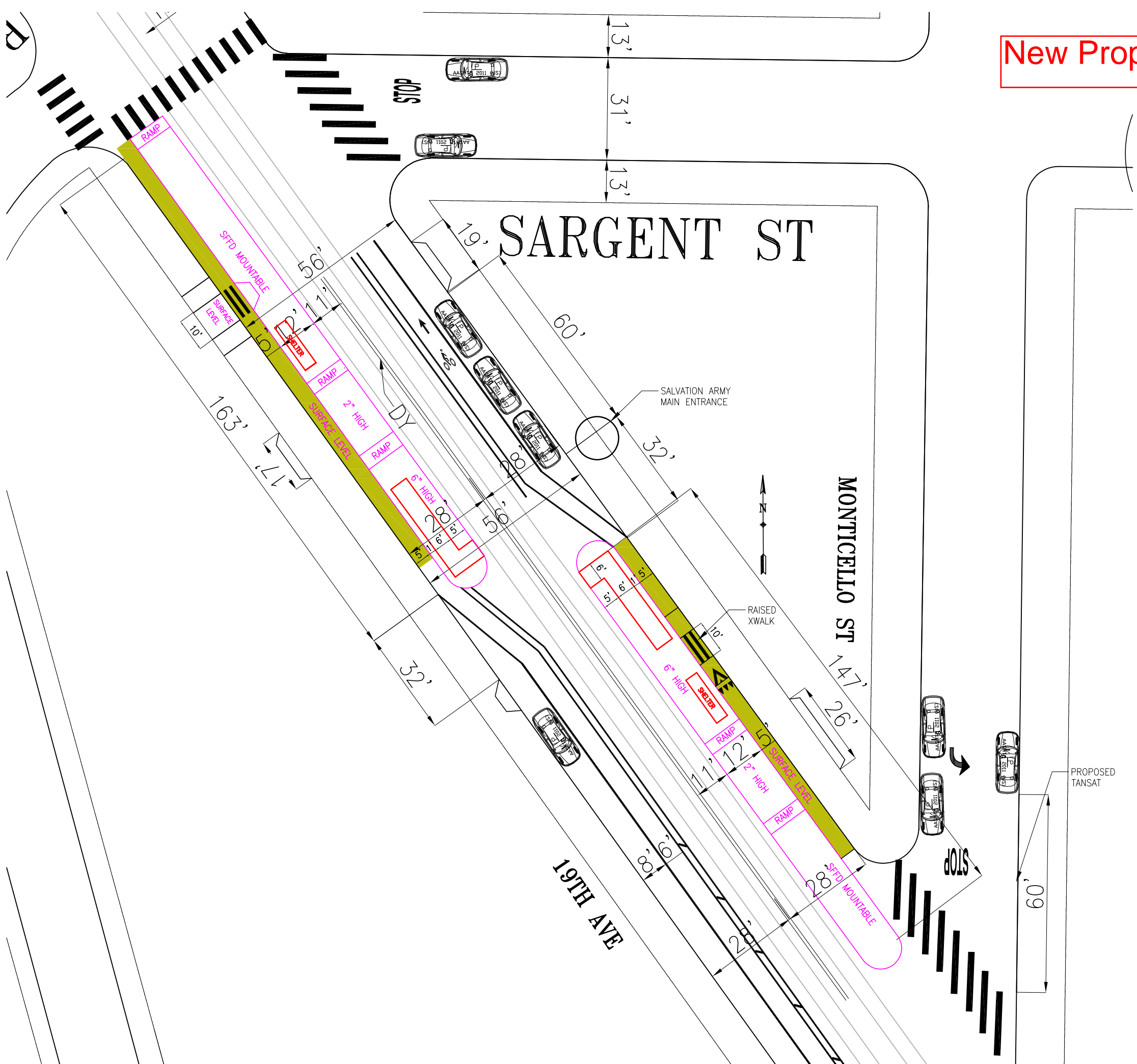
SB Monticello St would become left-turn only onto 19th Ave to prevent turning conflicts



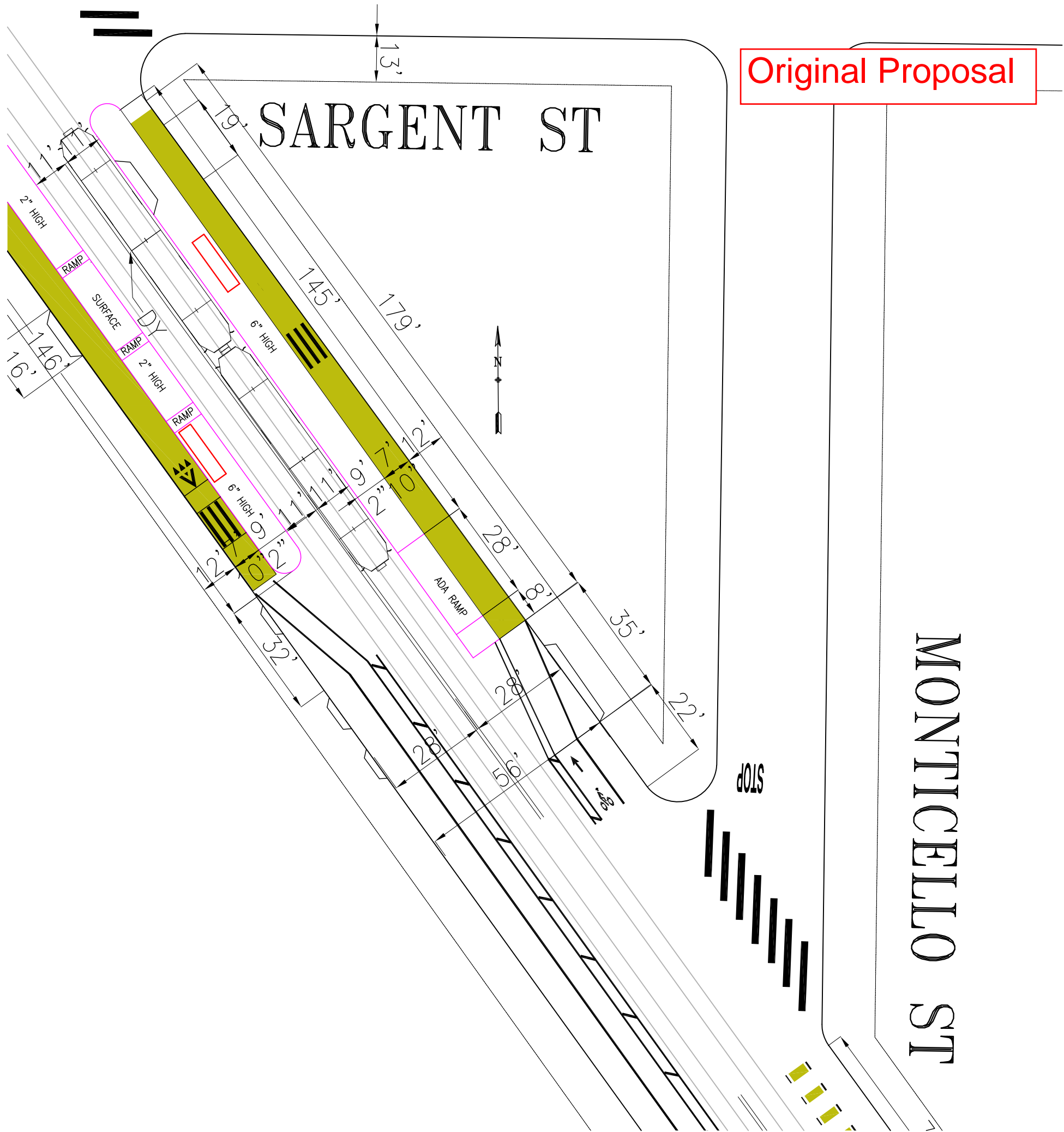
Potential Circulation



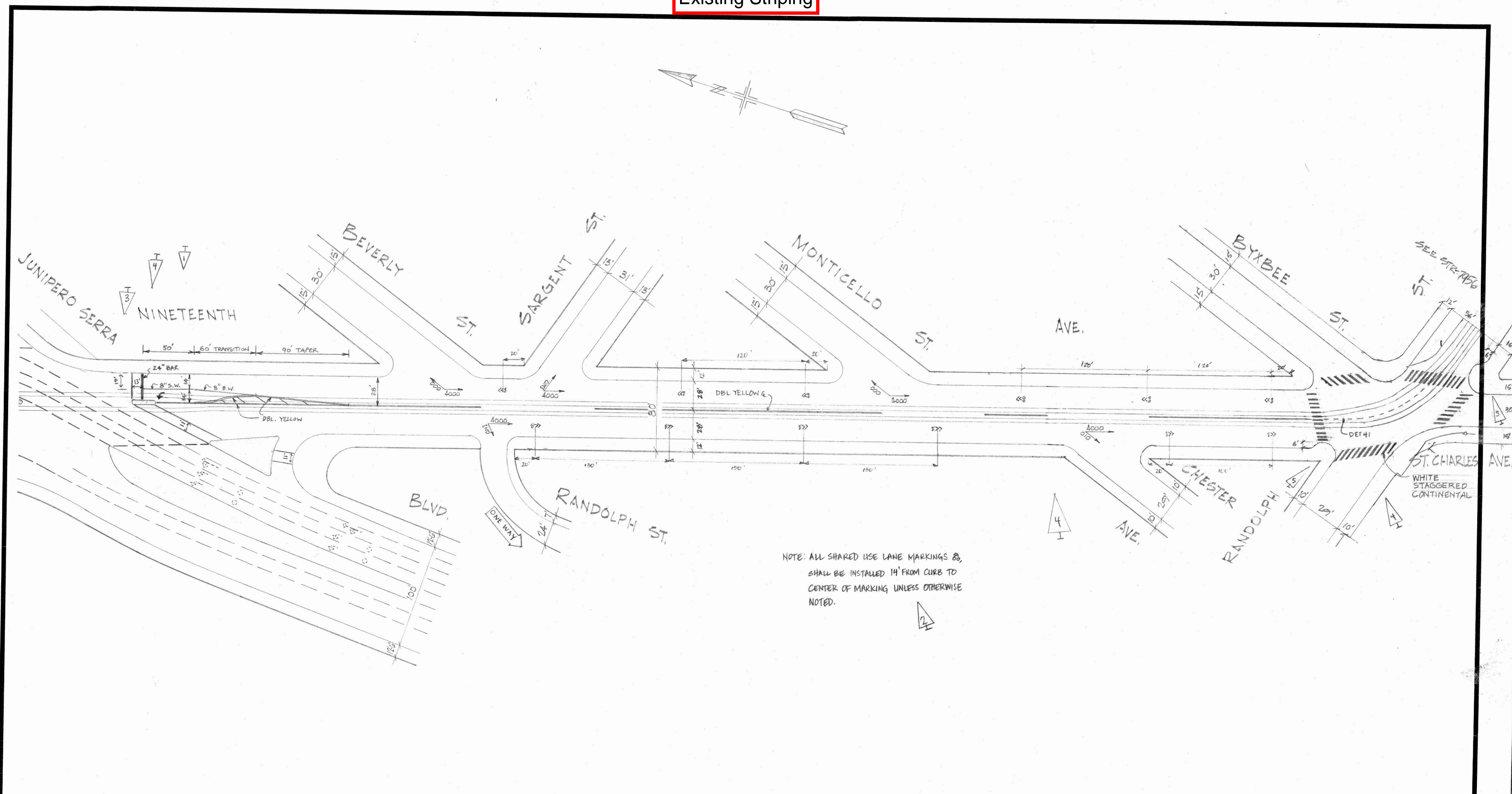
New Proposal



Original Proposal



Existing Striping



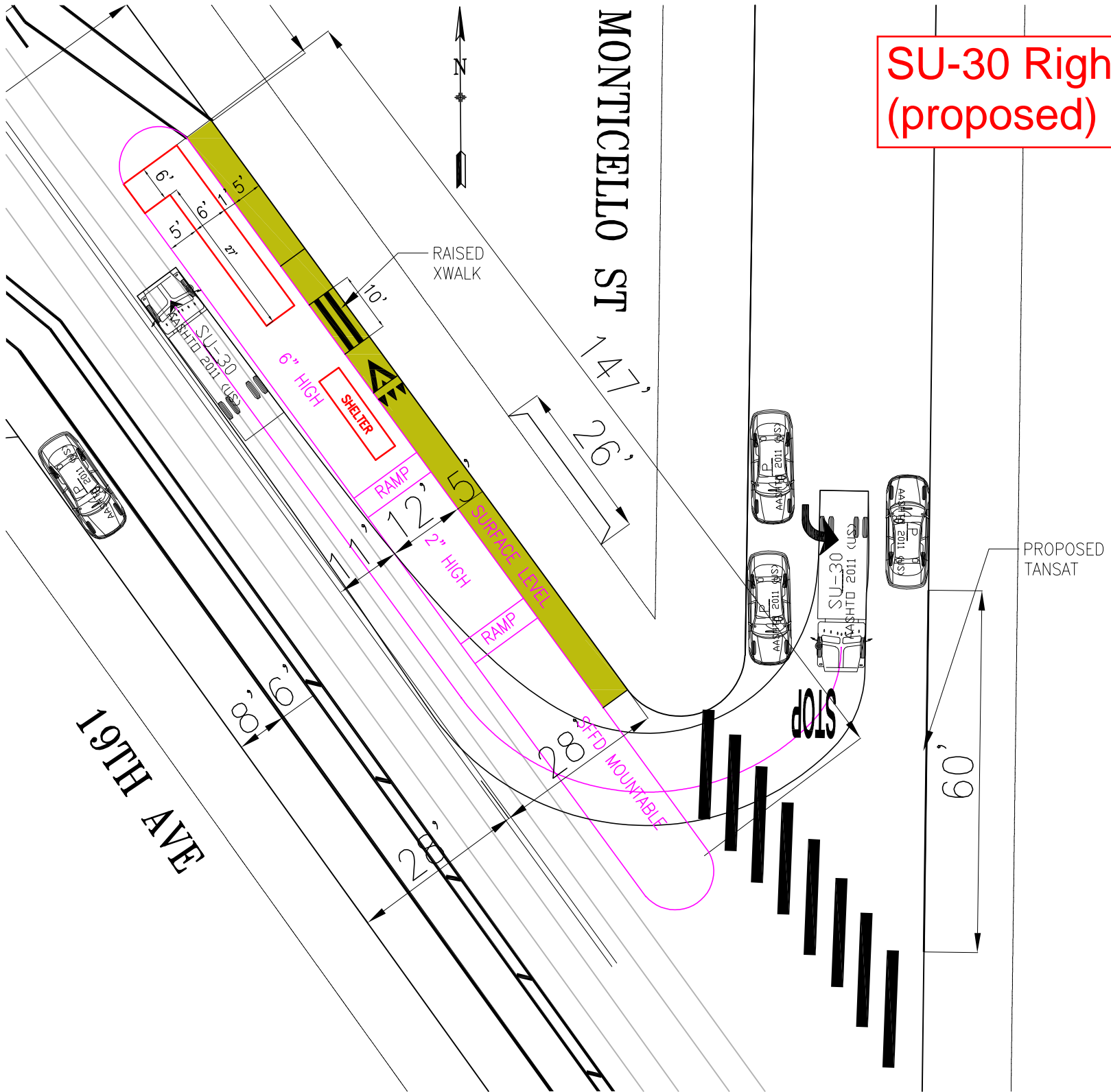
NOTE: ALL SHARED USE LANE MARKINGS \otimes , SHALL BE INSTALLED 14' FROM CURB TO CENTER OF MARKING UNLESS OTHERWISE NOTED.

NO.	DATE	DESCRIPTION	APPR.	BY
5		BUILD-OUTS & WHITE STAGGERED CONTINENTS @ RANDOLPH	PL	DYS
4	7-17-14	UPDATED PER FIELD - AT CHESTER, REMOVE SHOULDER AT SERRA, SHIRT/DIM SHOULDER AT BYXBEE-BISH	BW	DY
3	4-20-11	PER FIELD - REALIGNED XWALK AT J. SERRA	MJ	DY
2	1-5-11	INSTALL SHARED USE LANE MARKINGS	DEC	GA
1	3-18-09	ADDED CHANNELIZATION AND LEFT TURN LANE	TF	ET

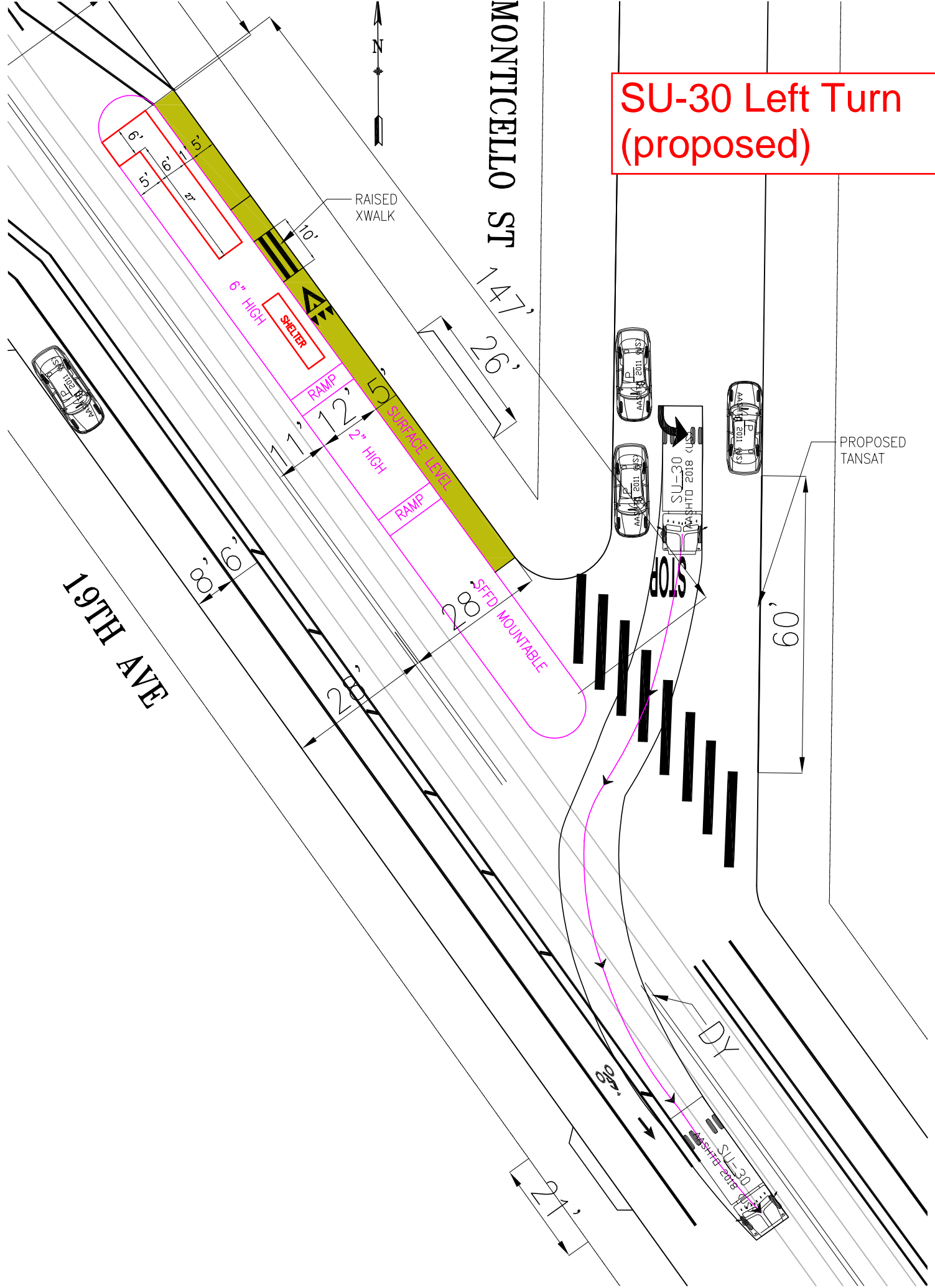
TABLE OF CHANGES
CAUTION: CHECK WITH TRACING TO SEE IF YOU HAVE LATEST REVISION

REFERENCES INSERT FILE NO'S OF SURVEYS, PLANS, ETC., USED First Print Date: 7-26-74		CITY AND COUNTY OF SAN FRANCISCO DEPARTMENT OF PUBLIC WORKS BUREAU OF ENGINEERING	
DESIGNED BY: <i>RVS</i> DRAWN BY: <i>RVS</i> TRACED BY: <i>KKW</i> CHECKED BY: <i>KKW</i>		DATE: <i>8-23-74</i> DATE: <i>8-23-74</i> DATE: <i>8-23-74</i>	
APPROVED SECTION ENG. <i>NDB</i> DIVISION ENG.		APPROVED FILE: <i>STR-5237</i> DATE:	
SCALE 1"=50' SHEET OF SHEETS: 5		CHANGE: 5	

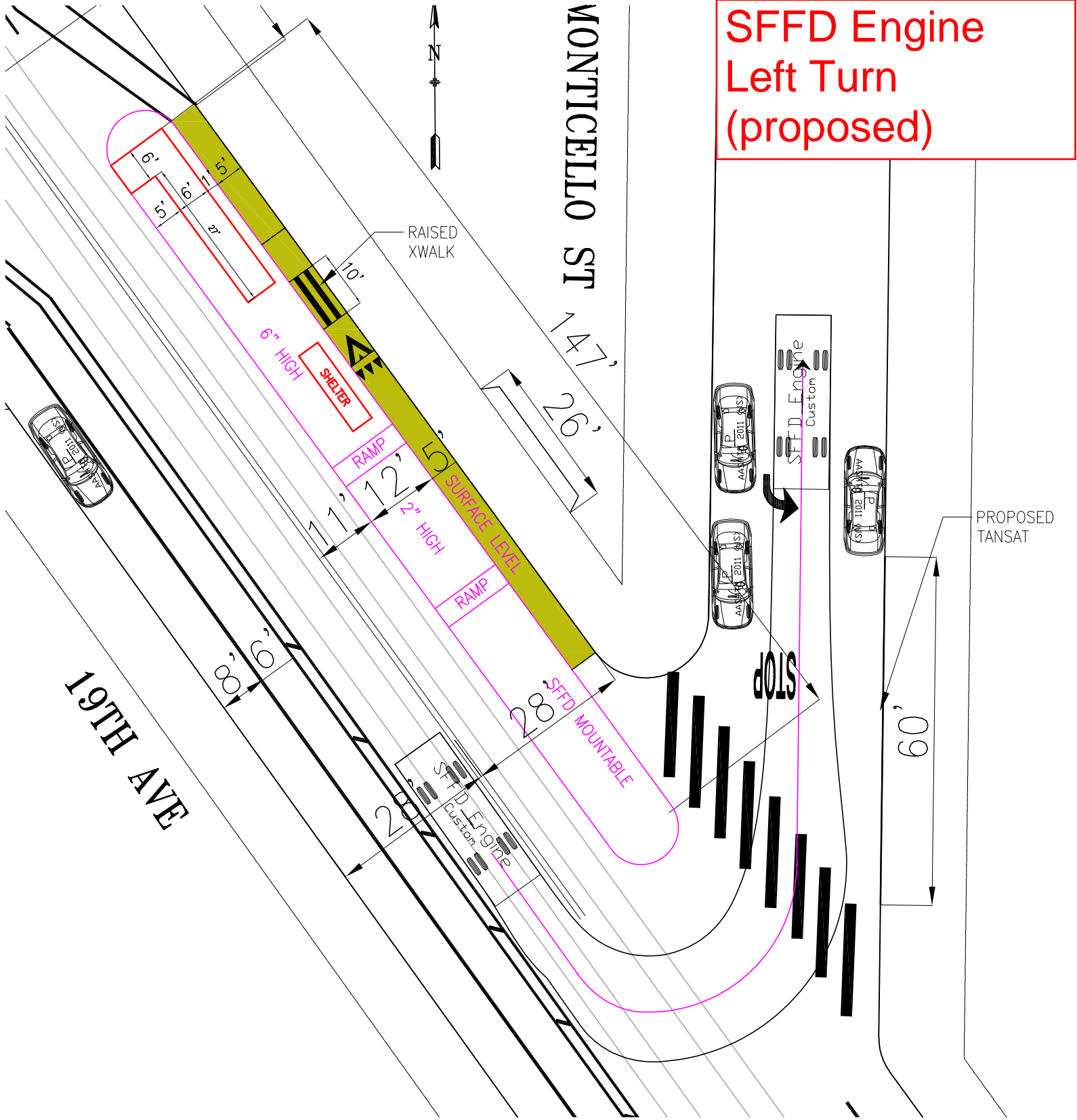
**SU-30 Right Turn
(proposed)**



**SU-30 Left Turn
(proposed)**



**SFFD Engine
Left Turn
(proposed)**



MONTICELLO ST

19TH AVE

RAISED XWALK

6" HIGH SHELTER

RAMP

2" HIGH

RAMP

SFFD MOUNTABLE

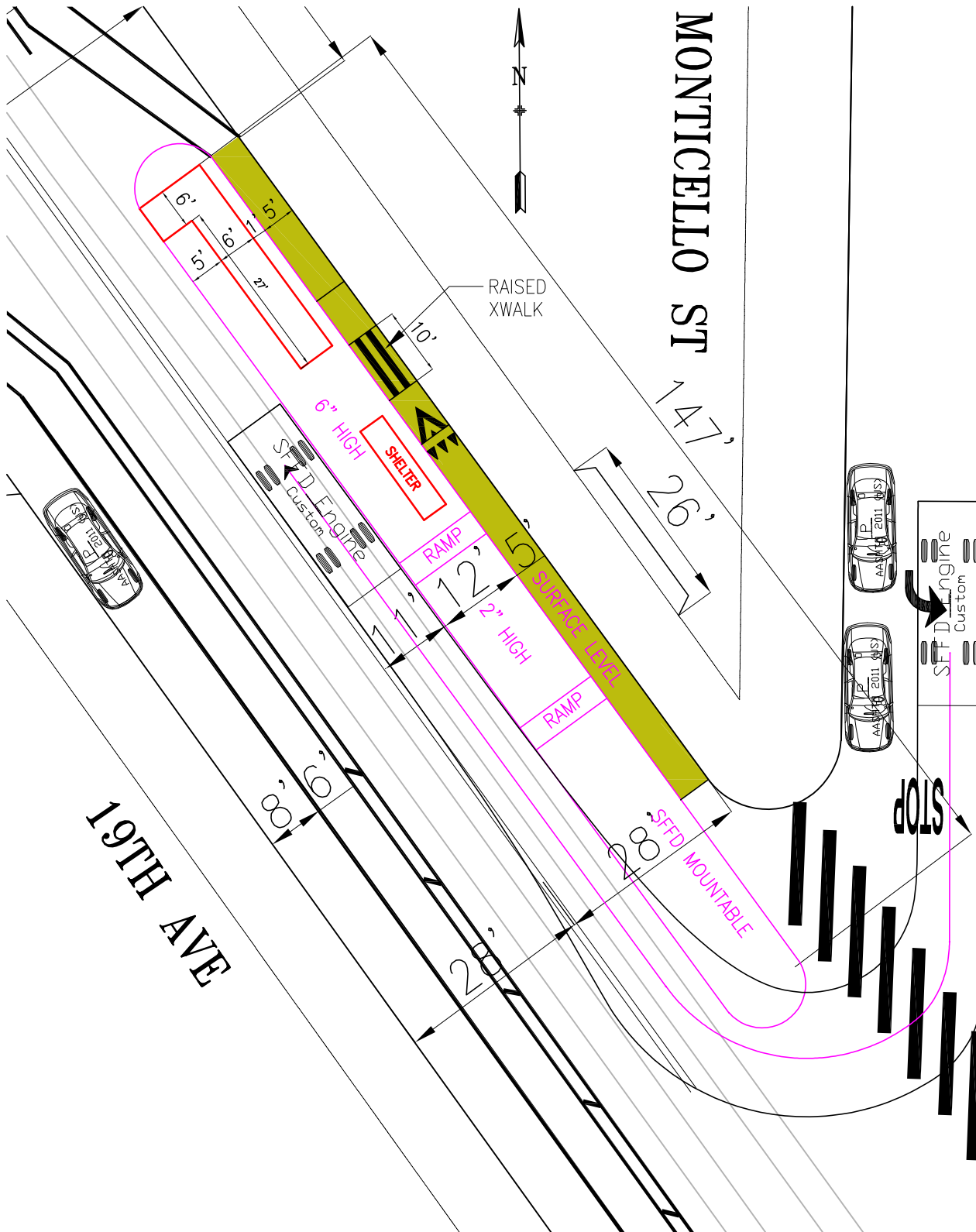
STOP

SFFD Engine

Custom

PROPOSED TANSAT





**SFFD Engine
Right Turn
(proposed)**

PROPOSED
TANSAT

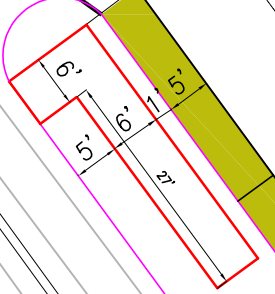
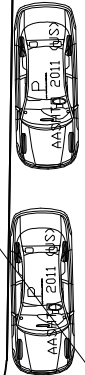
MONTICELLO ST

19TH AVE



STOP

SFFD Engine
Custom



6" HIGH
SHEDDER

RAMP

2" HIGH

RAMP

LO SURFACE LEVEL

SFFD MOUNTABLE

SFFD Engine
Custom

STOP

STOP

STOP

STOP

STOP

STOP

STOP

STOP

STOP

STOP

STOP

STOP

STOP

STOP

STOP

STOP

STOP

STOP

STOP

STOP

STOP

STOP

STOP

STOP

STOP

STOP

STOP

STOP

STOP

STOP

STOP

STOP

STOP

STOP

STOP

STOP

STOP

STOP

STOP

STOP

STOP

STOP

STOP

STOP

STOP

STOP

STOP

STOP

STOP

STOP

STOP

STOP

STOP

STOP

STOP

STOP

STOP

STOP

STOP

STOP

STOP

STOP

STOP

STOP

STOP

STOP

STOP

STOP

STOP

STOP

STOP

STOP

STOP

STOP

STOP

STOP

STOP

STOP

STOP

STOP

STOP

STOP

STOP

STOP

STOP

STOP

STOP

STOP

STOP

STOP

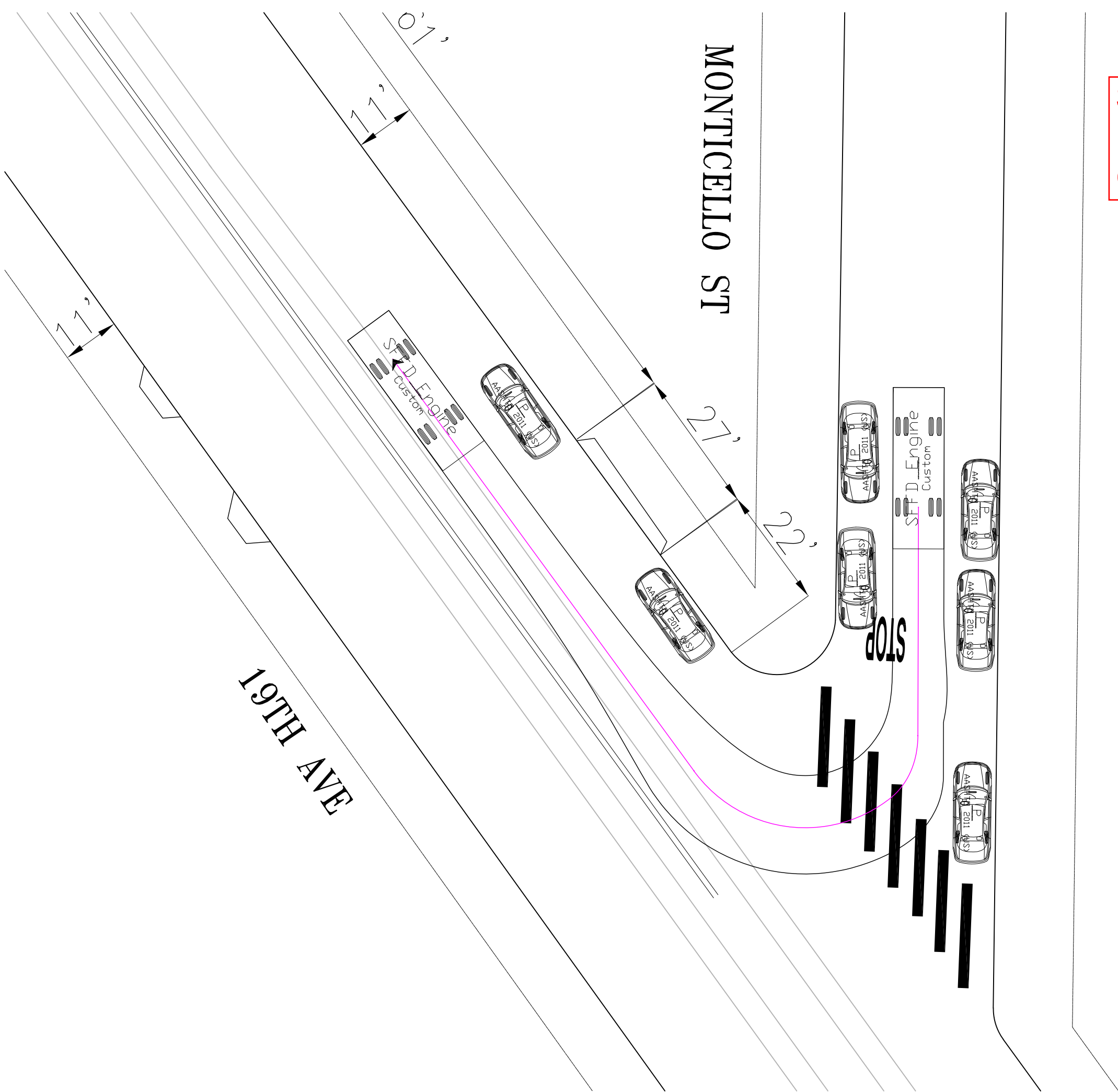
STOP

STOP

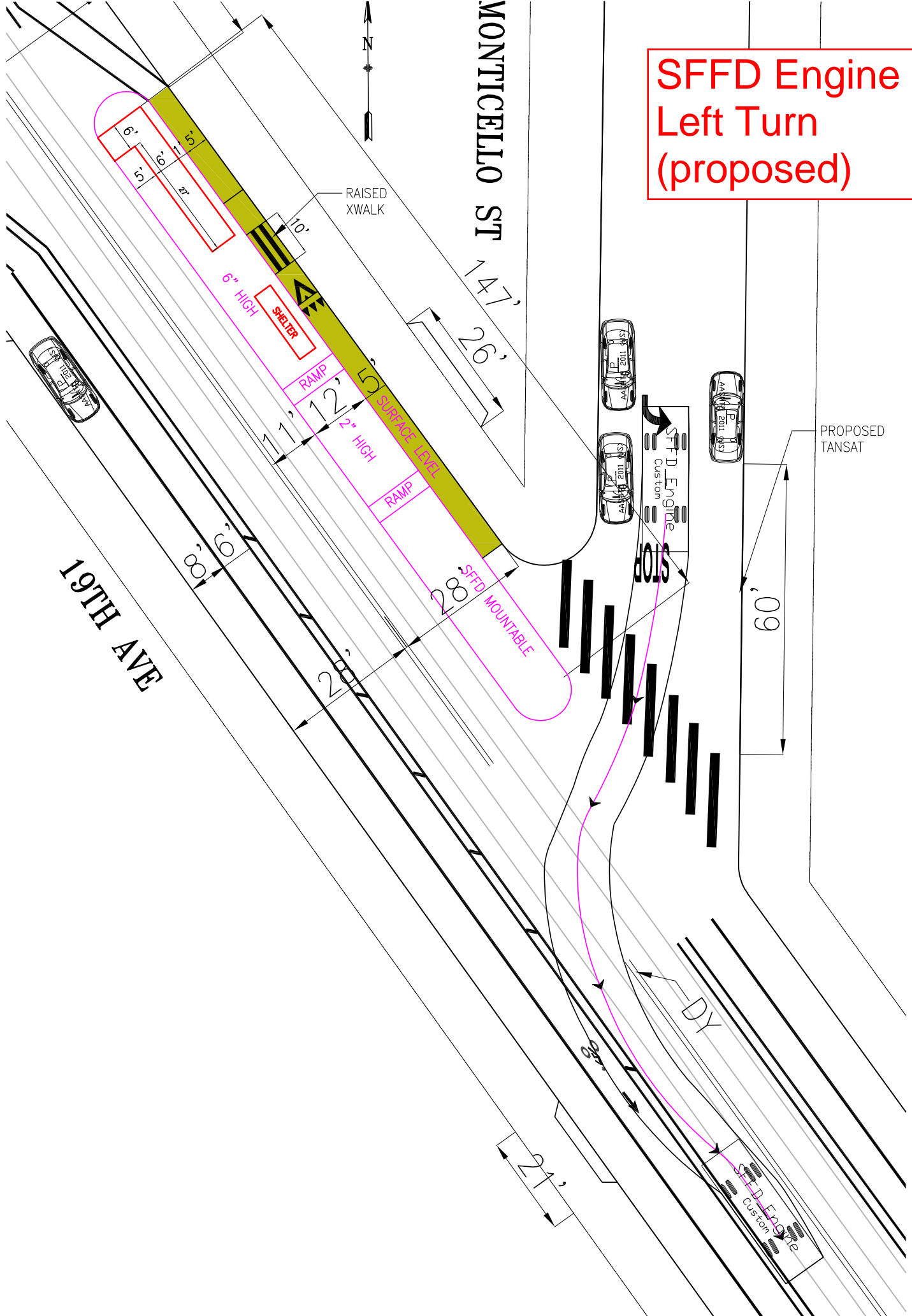
STOP

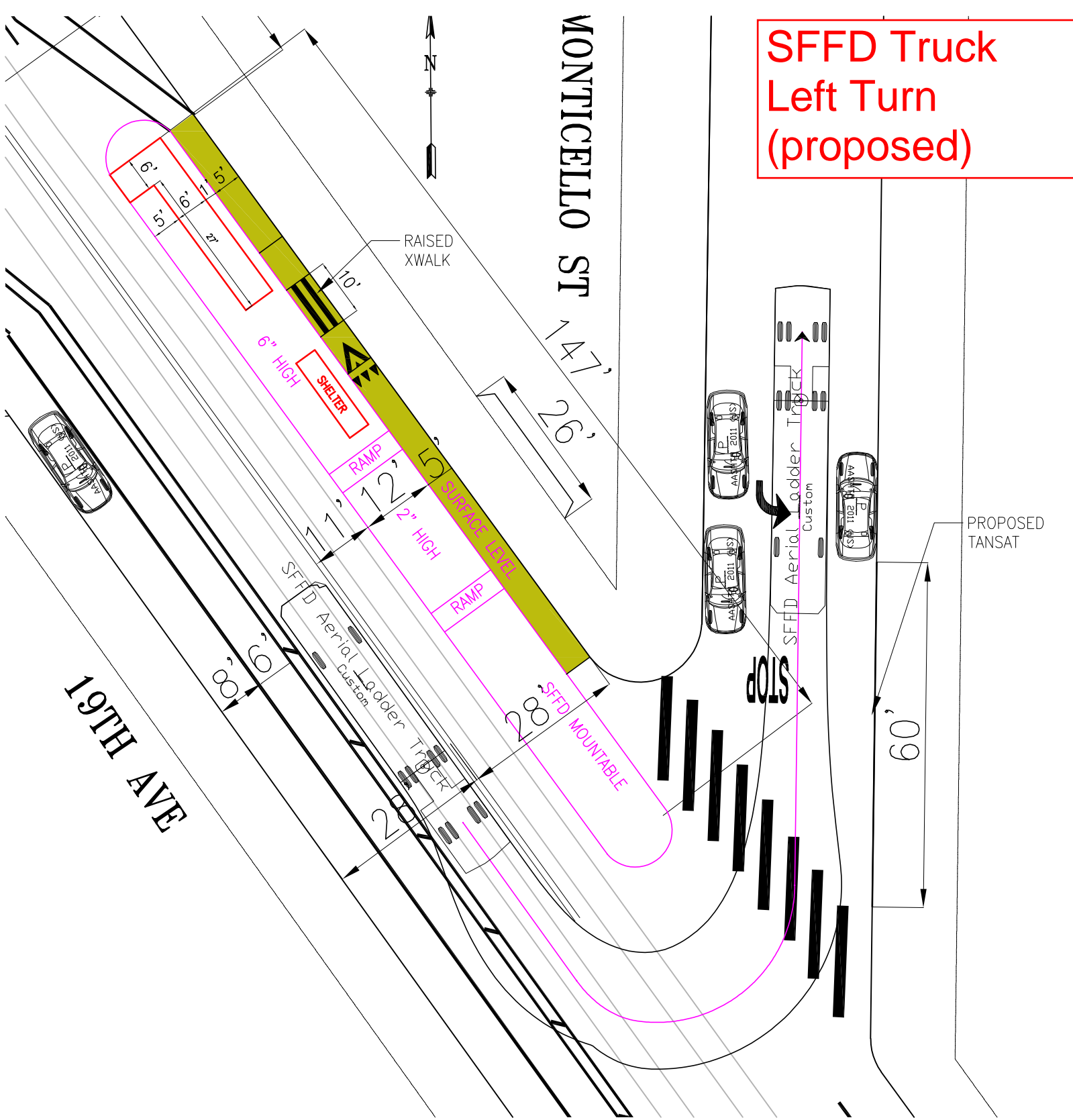
STOP

SFFD Engine
Right Turn
(existing)



**SFFD Engine
Left Turn
(proposed)**





**SFFD Truck
Left Turn
(proposed)**

MONTICELLO ST

19TH AVE



RAISED
XWALK

6" HIGH
SHELTER

RAMP

2" HIGH
RAMP

SURFACE LEVEL

SFFD Aerial Ladder Truck
Custom

SFFD MOUNTABLE

STOP

SFFD Aerial Ladder Truck
Custom

PROPOSED
TANSAT

6'
5'
6'
7'
5'

2'

10'

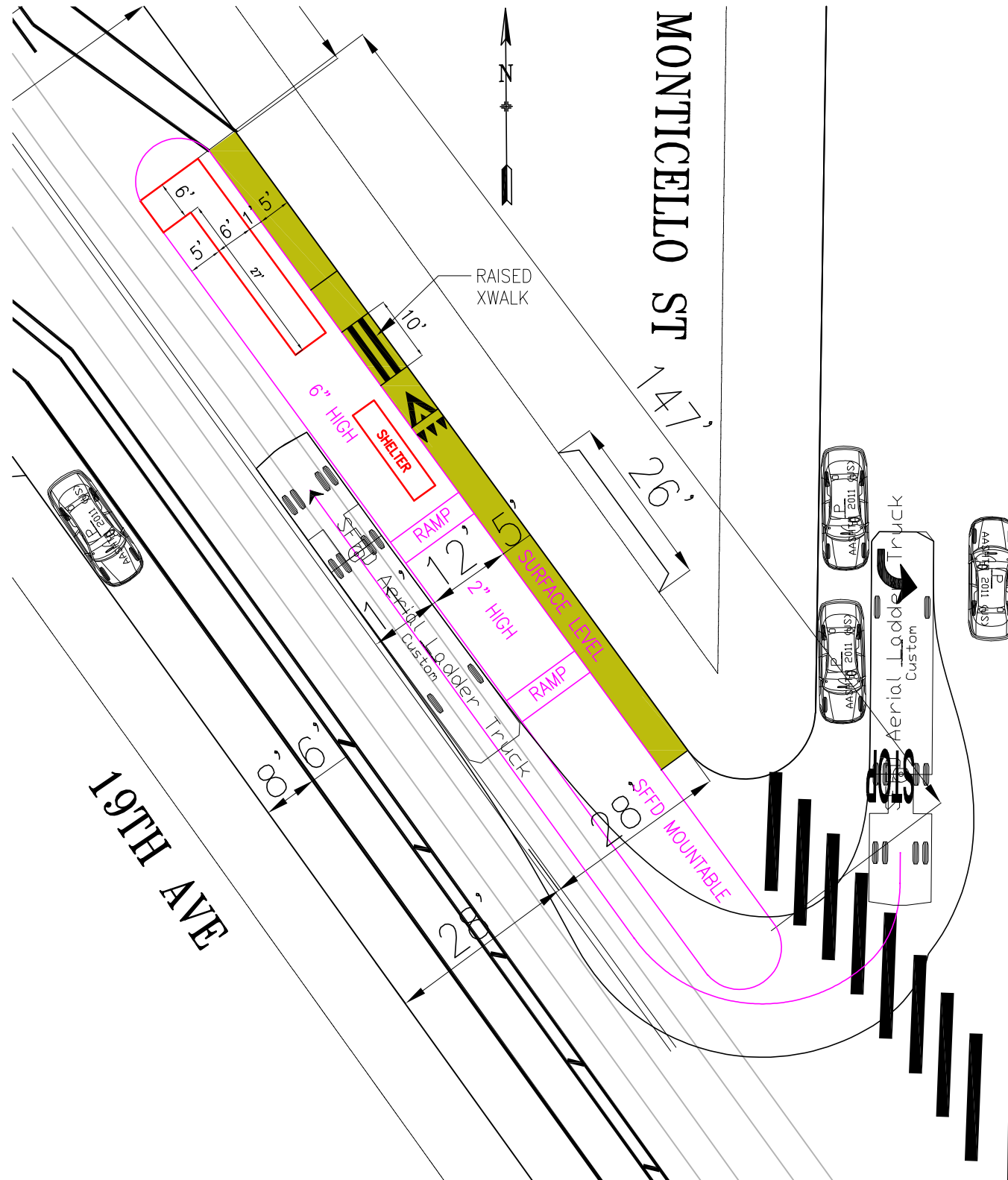
147'
26'

60'

60'

200'

60'



**SFFD Truck
Right Turn
(proposed)**

19TH AVE

MONTICELLO ST



RAISED XWALK

6" HIGH SNIDER

10'

147'

26'

6" HIGH RAMP

2" HIGH RAMP

2" HIGH RAMP

80'

60'

200'

SFFD MOUNTABLE

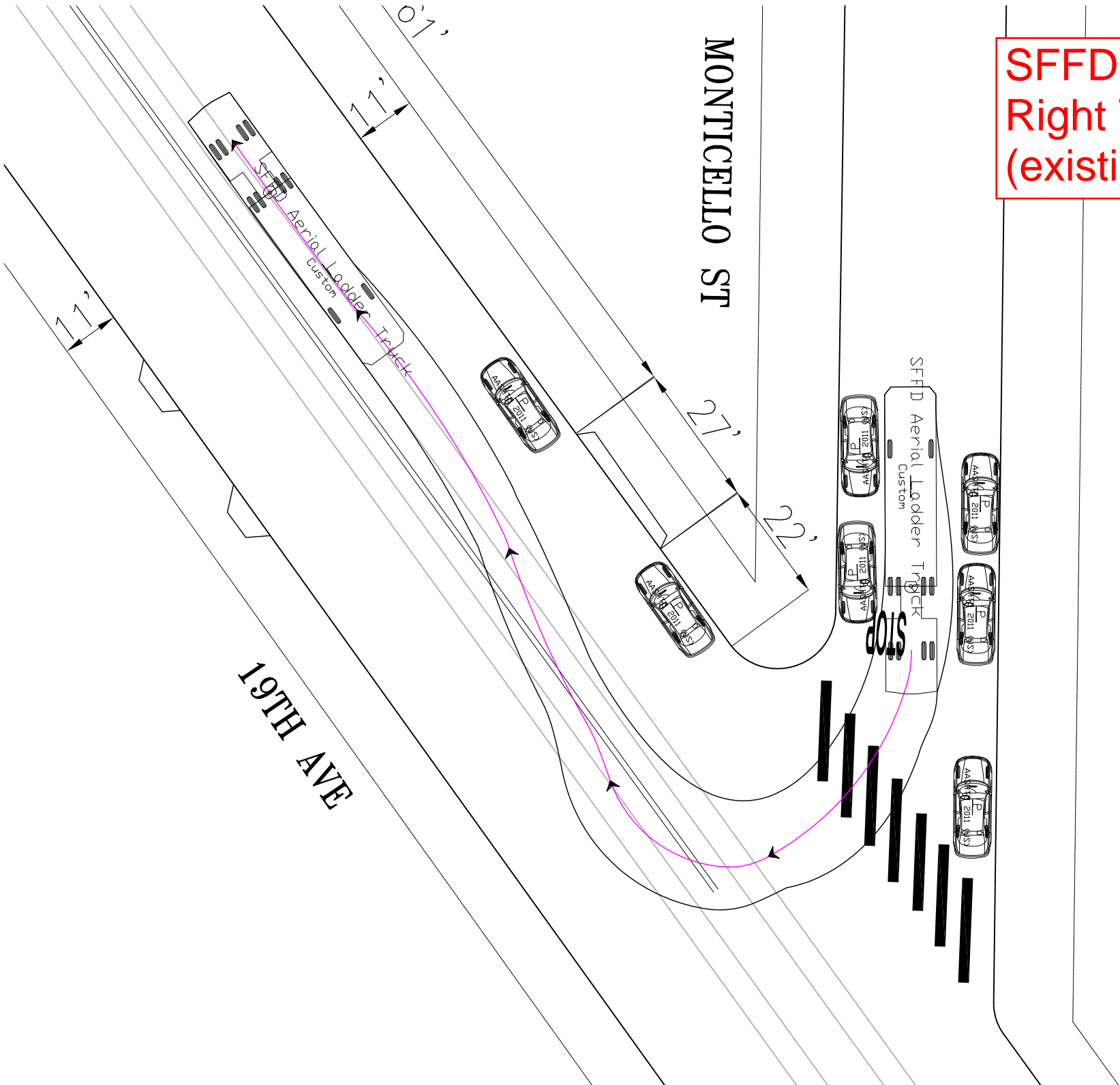
Aerial Ladder Custom Truck

SFFD MOUNTABLE

PROPOSED TANSAT

60'

SFFD Truck
Right Turn
(existing)



MONTICELLO ST

19TH AVE

STOP

SFFD Aerial Ladder Truck Custom

SFFD Aerial Ladder Truck Custom

0'1''

21'

22'

7'

7'

**SFFD Truck
Left Turn
(proposed)**

