



**SFMTA**  
Municipal Transportation Agency

# San Francisco Strategy for Long-Term Bicycle Parking

11 | 15 | 2013

SAN FRANCISCO, CALIFORNIA



# **What is Long-Term Bike Parking?**

**Long-term bicycle parking are facilities for parking a bicycle longer than two hours.**

- **Provide economic benefits**
- **Make properties more attractive and valuable**
- **Increase overall bicycle use by providing an attractive, secure place for parking**







# Context

- **SFMTA Strategic Plan: 50 percent auto and 50 percent non-auto for all trips by 2018.**
- **SFMTA Bicycle Strategy: increase the supply of adequate long-term bicycle parking.**
- **SF Planning Code: requirements for office, retail establishments, schools and multi-family residences and City buildings.**
- **SF Environment Code: employees can store a bicycle in offices if sufficient facilities are not available on-site.**





# 1. Types – Bicycle Lockers



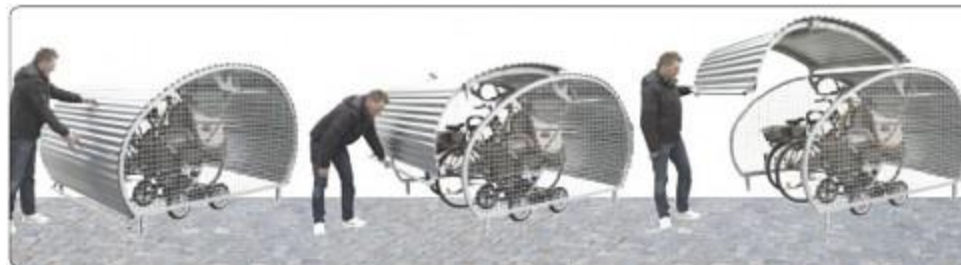


# 1. Types – Bicycle Lockers





# 1. Types – Bicycle Lockers







## 2. Types – Bike Storage Areas





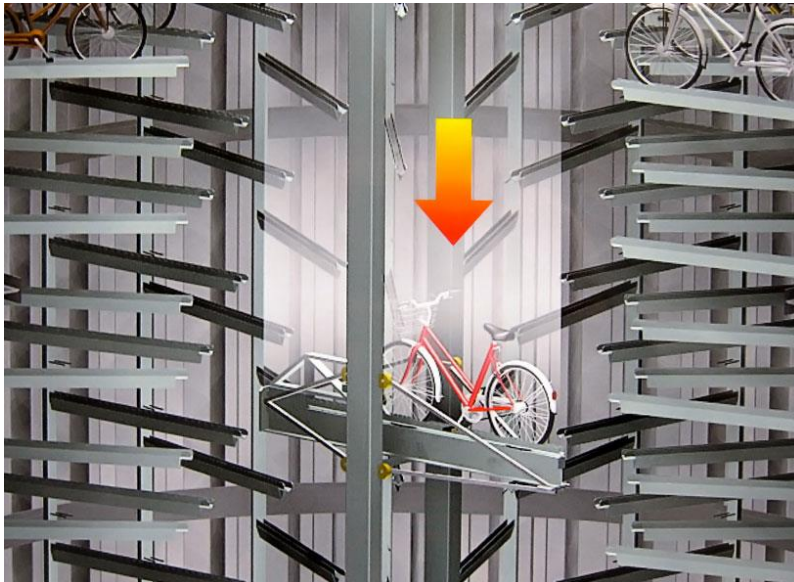


## 2. Types – Bike Storage Areas





## 2. Types – Bike Storage Areas





# 3. Types – Attended Bicycle Stations







# **Locations**

- **Transit Centers**
- **Employment and Retail Centers**
- **Residential Areas**







santa monica  
**BIKE**  
center

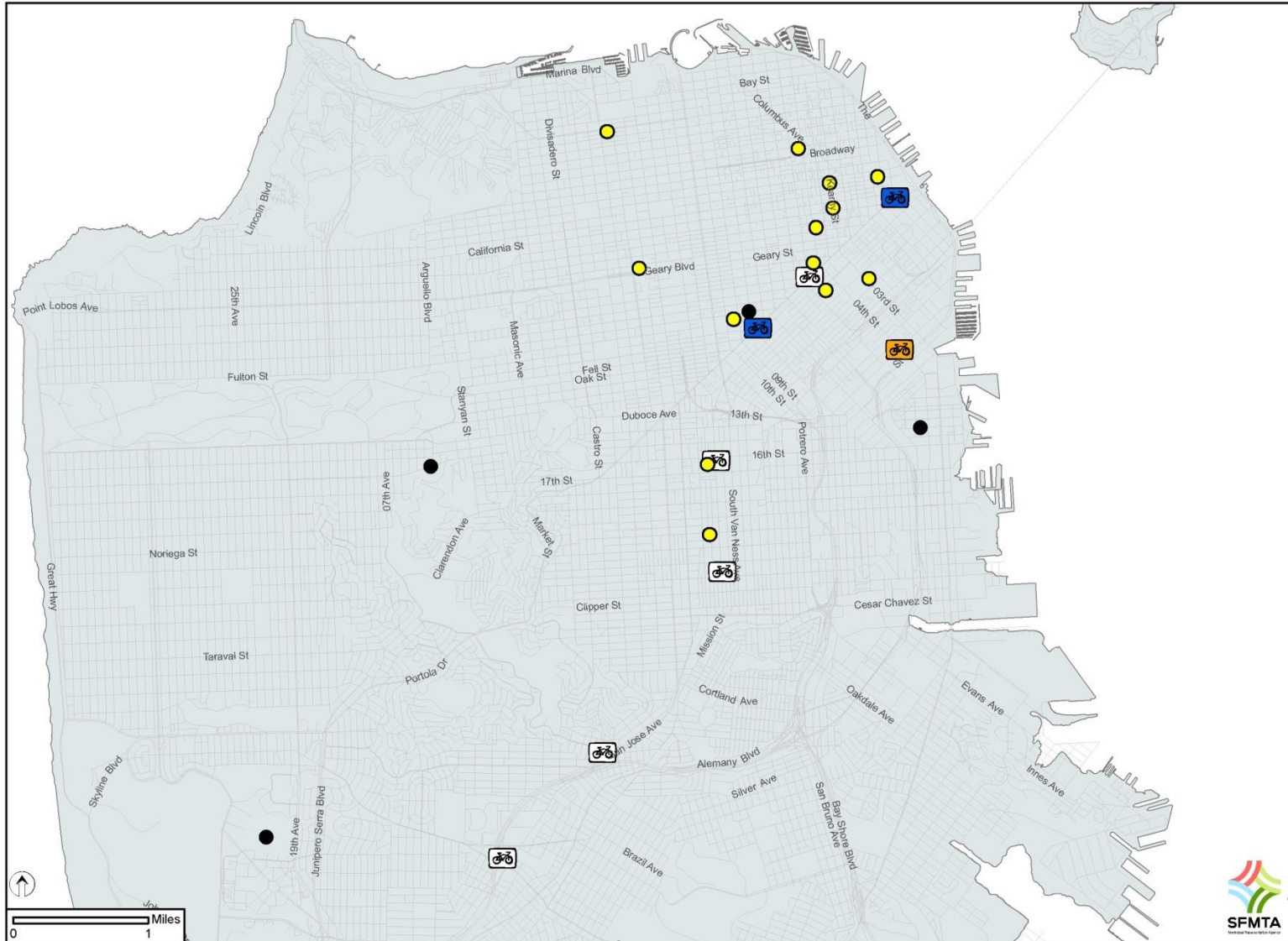






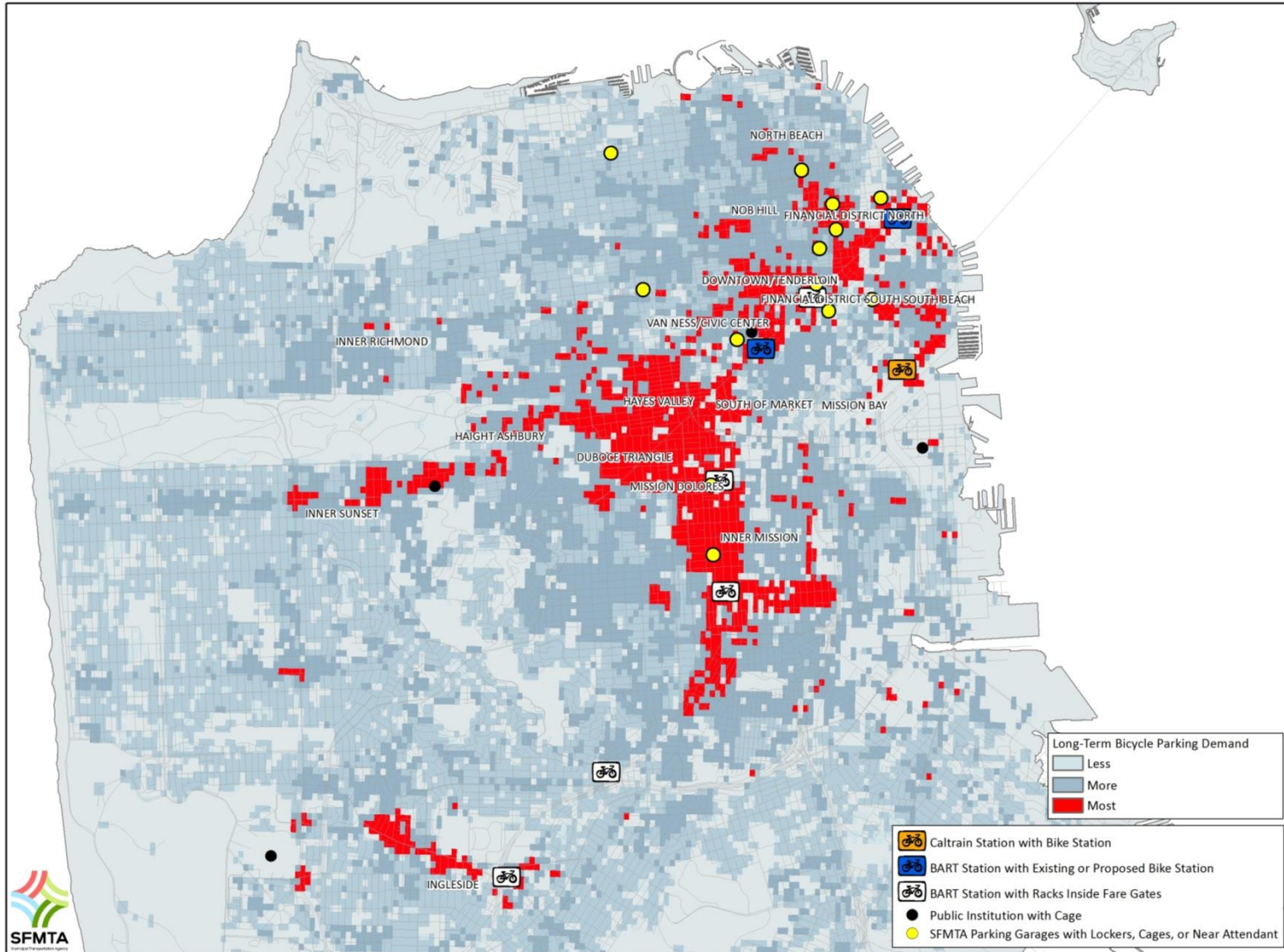


# Existing Long-Term Bike Parking





# Demand for Long-Term Bike Parking



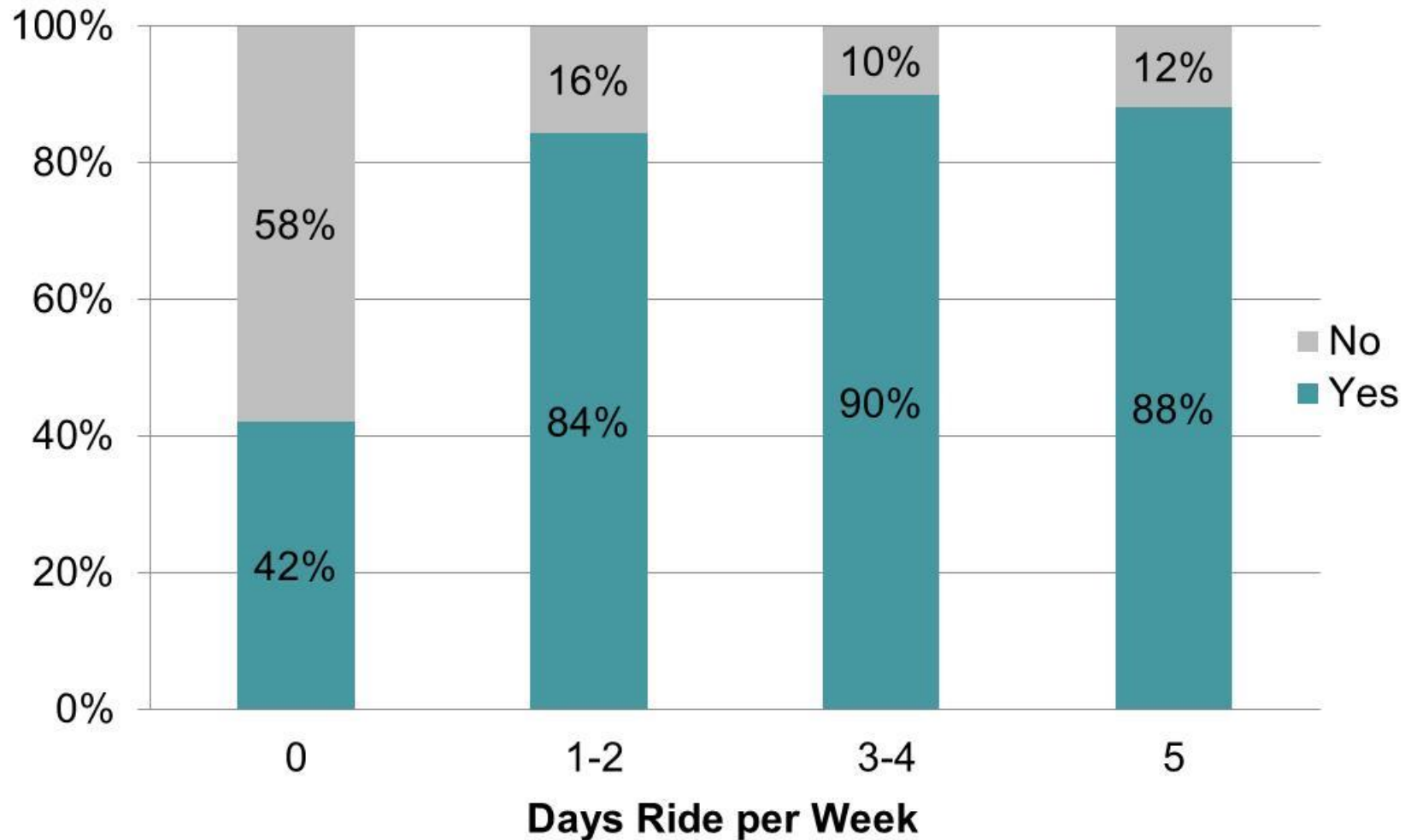


# Commuter and Resident Survey

- **Online Survey**
- **14 questions**
- **Flyer with weblink**
- **Social and web outreach**
- **>1,000 responses**



# If more secure parking was available near your destination, would you bicycle more?





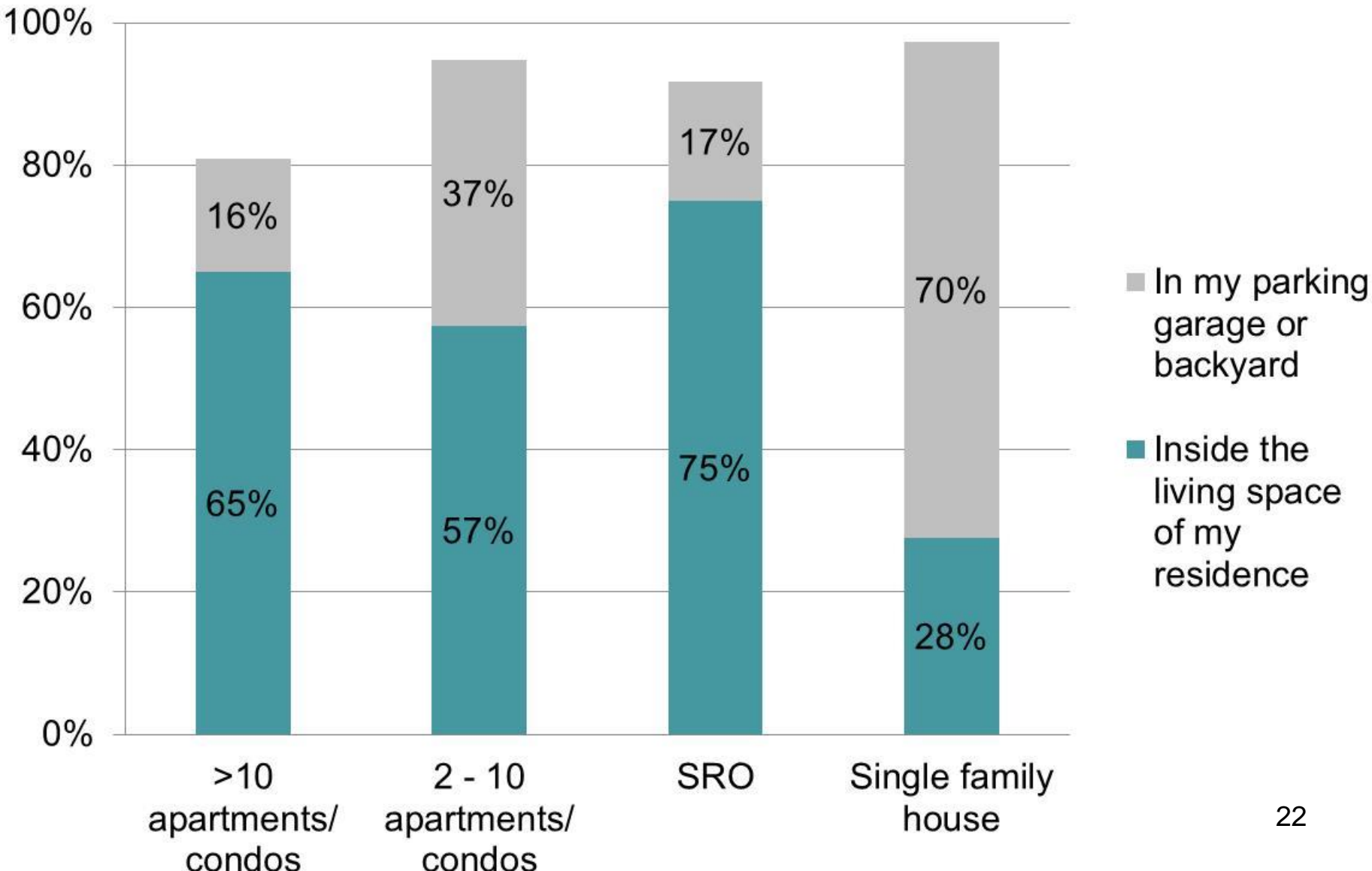


# If more secure parking was available near your destination, would you bicycle more?

<b>Days ride a bike</b>	<b>0</b>	<b>1-2</b>	<b>3-4</b>	<b>5</b>
No	58%	16%	10%	12%
Yes	42%	84%	90%	88%

# How would you characterize where you live?

## If you own a bicycle, where do you store it at your home?



# How would you characterize where you live? If you own a bicycle, where do you store it at your home?

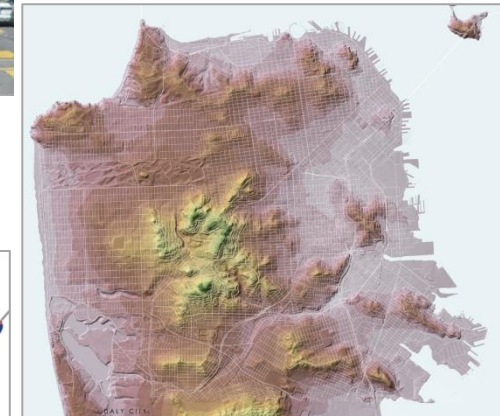
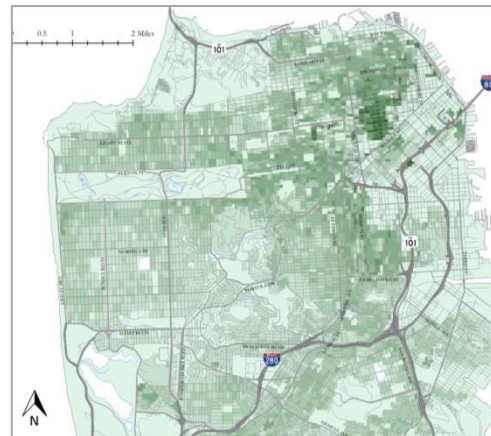
	>10 apartments / condos	2 - 10 apartments / condos	Single room occupancy	Single family house
In my parking garage or backyard	16%	37%	17%	70%
Inside the living space of my residence	65%	57%	75%	28%





# Implementation

- **Bikes on Transit Restrictions**
- **High Bike Volumes**
- **Topographic & Geographic Constraints**
- **High Population & Retail Density**





# Considerations for Recommendations

- **Cost Effective**
- **User Cost**
- **Location and Diversity**
- **Monumental Facilities**
- **Accessible Racks**
- **Availability of Amenities**





# Recommendations – Bicycle Lockers

Location	Cost*	Initial Phase Number	Initial Phase Total Cost	Second Phase Number	Second Phase Total Cost
<b>SFMTA Parking Garages</b>	\$3,000	52 (32)	\$156,000	-	-
<b>Transit Connections</b>	\$3,000	12	\$36,000	-	-
<b>Market Street</b>	\$4,200	-	-	10	\$42,000
<b>Residential Neighborhoods</b>	\$8,400	4	\$33,600	8	\$67,200

\*Annual operating approximately \$200 per locker





# Recommendations – Bike Storage Areas

Location	Cost*	Initial Phase Number	Initial Phase Total Cost	Second Phase Number	Second Phase Total Cost
West Portal	\$500,000	1	\$500,000	-	-
SFMTA Parking Garages	\$500,000	-	-	2	\$1,000,000
Ferry Building (funded by Port)	\$500,000	-	-	1	\$500,000
Transbay Terminal (funded by TJPA)	\$500,000	-	-	1	\$500,000

\*Annual operating approximately \$2,000 per storage area



# Recommendations – Attended Bike Parking

Location	Cost*	Initial Phase Number	Initial Phase Total Cost	Second Phase Number	Second Phase Total Cost
Downtown San Francisco	\$1,200,000-\$5,000,000	1	\$1,200,000-\$5,000,000	-	-
Transbay Terminal (funded by TJPA)	\$1,200,000-\$5,000,000	-	-	1	\$1,200,000-\$5,000,000
TBD	\$1,200,000-\$5,000,000	-	-	1	\$1,200,000-\$5,000,000

\*Annual operating approximately \$120,000 - \$200,000

Capital funding is currently under consideration as part of the SFMTA FY15-FY19 Capital Improvement Program update. Specific funding sources and amounts will be finalized in early 2014.



# **Bike Strategy Goals for 2018**

**Goal 2, Objective 2.2: increase the supply of adequate long-term bicycle parking.**

- **Three attended and three unattended secure bicycle parking stations.**
- **100 electronic bicycle lockers (50 by FY 2014, 25 by FY 2016 and 25 by FY 2018)**
- **12 residential collective bicycle lockers (four by FY 2014, four by FY 2016 and four by FY 2018)**





**SFMTA**  
Municipal Transportation Agency

***Strategy for Long-Term Bicycle Parking:***  
<http://www.sfmta.com/about-sfmta/reports/bike-reports>

**Matt Lasky**  
**Livable Streets**  
[matt.lasky@sfmta.com](mailto:matt.lasky@sfmta.com)  
**415.701.5228**