



Bayshore Quick-Build Project

Community Outreach Summary – Summer 2022

Summary

Thank you to the over 900 residents, commuters, business owners, employees, and visitors who took the surveys during our initial outreach phase for the [Bayshore Quick-Build Project](#). The project team reviewed all feedback received and identified the following key needs/concerns:

- Unsafe vehicle speeds on Bayshore Boulevard
- Need for greater protection between the vehicle travel lane and bike lane
- Need for improved pedestrian and bike safety
- Need for improved neighborhood connections by bike



The project team is considering refinements to the project proposal in response to feedback received and will continue to provide updates to all project stakeholders.

The current project timeline is listed below:

- **August 2022** – Round 2 Community Outreach and Final Design (showcase the final proposed project design and answer questions).
- **Summer/Fall 2022** – Approvals/Legislation for Section 1 – Bayshore Boulevard from Silver to Oakdale avenues (Public Hearing anticipated in late September).
- **Fall 2022** – Construction begins on Section 1 – Bayshore Boulevard from Silver to Oakdale avenues.

Survey Results

In May 2022, we distributed an online multilingual survey to project stakeholders. We also sent mailers to residents within 1,000 feet of the project area of Bayshore Boulevard between Silver and Jerrold avenues. We also included residences within 1,000 feet on the east and west side of Hwy 101 at Cesar Chavez, Alemany Boulevard at Putnam Street and Willie Brown Middle School and Thurgood Marshall Highschool.

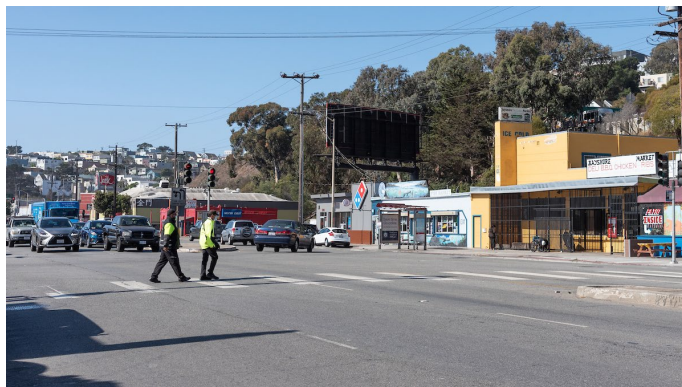


Figure 1 below illustrates the breakdown of the 941 survey responses received in terms of source, neighborhood, race/ethnicity, age, and gender identity.

The rest of this document summarizes the feedback received and explains next steps for the project.

Figure 1 – Survey Respondents’ Demographics

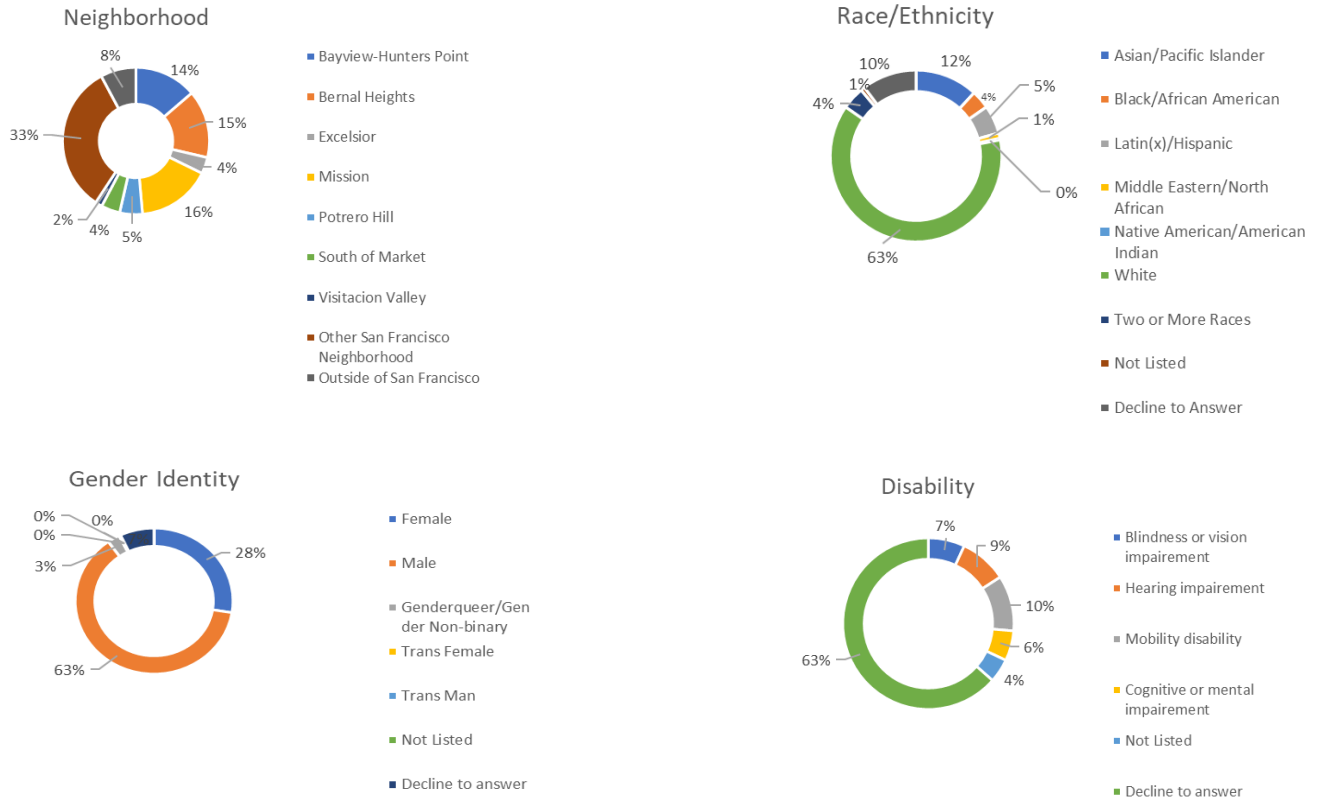
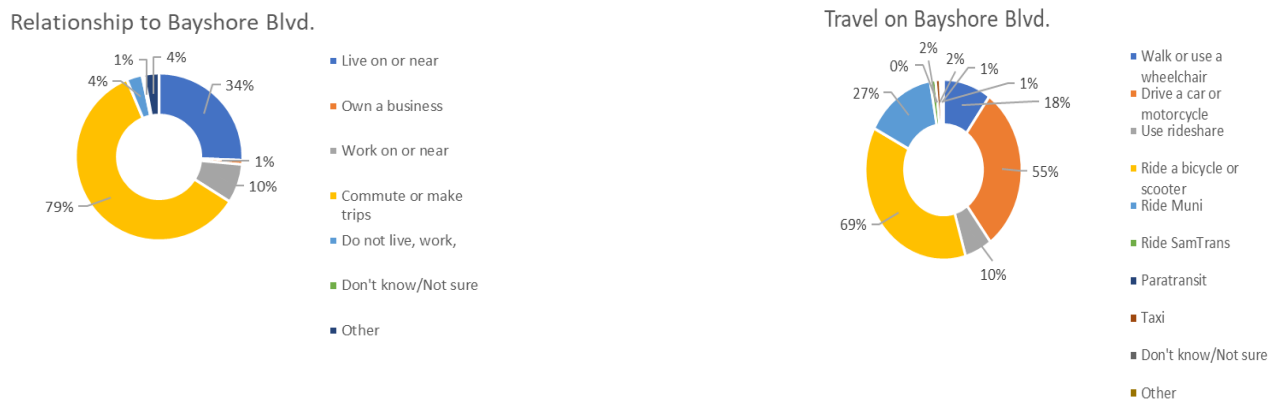
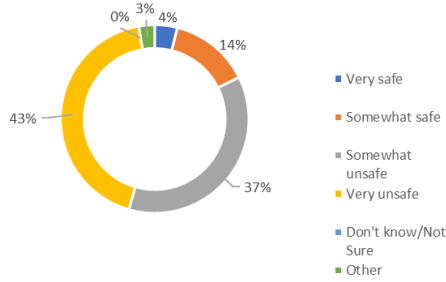


Figure 2 – Survey Respondents’ Relationship to Bayshore Blvd.



Safety Perception on Bayshore Blvd.



Transportation and Safety Goals on Bayshore Blvd.

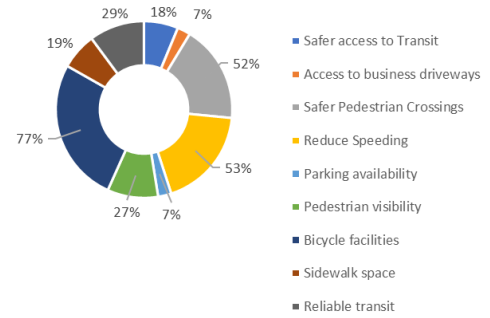
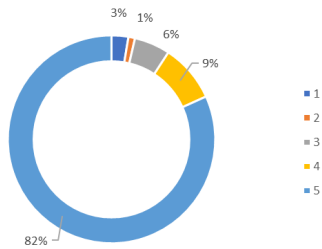


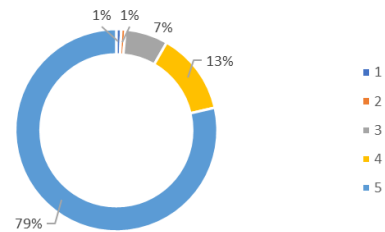
Figure 3 – Survey Respondents’ Sentiment on Transportation Safety Improvements on Bayshore Blvd. between Silver and Oakdale Avenues (Section 1)

**Ratings include (1 = Dislike to 5 = Like)*

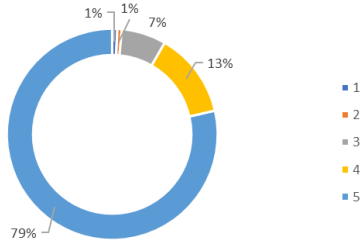
Rate - Improve and Upgrade Bike Lanes



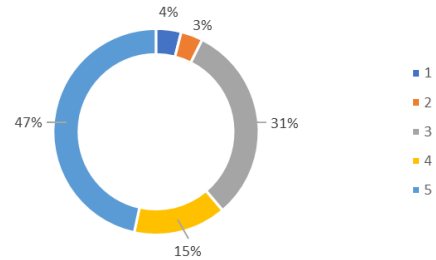
Rate - Convert and Keep Some Parking from Curbside to Floating



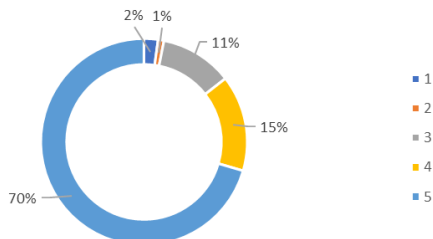
Improve Pedestrian Safety by Enhancing Pedestrian Crossings



Rate - Reduce Vehicle Collisions by Installing a Concrete Median on Bayshore between Oakdale and Cortland



Rate - Propose Creating a Protected Right Turn Traffic Lane onto Industrial from Northbound Bayshore Blvd.



Rate - Remove approx. 34 parking spaces on Bayshore Blvd. to Implement Transportation Safety Improvements

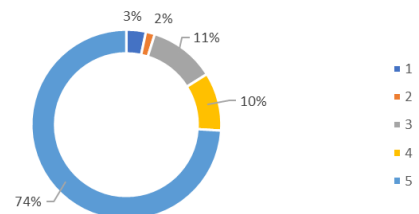
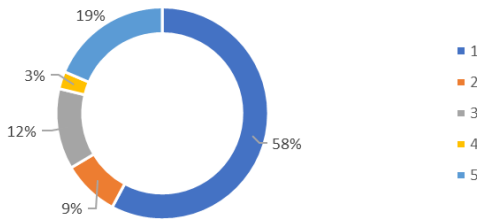


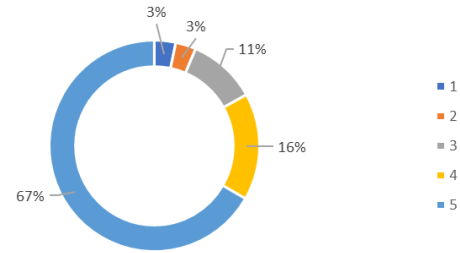
Figure 4 – Survey Respondents’ Sentiment on Transportation Safety Improvements on Bayshore Blvd. between Oakdale and Jerrold Avenues (Section 2)

*Ratings include (1 = Dislike to 5 = Like)

Rate - Install a Fully Protected Two-way Bikeway and Remove Parking Along Northbound Bayshore Blvd.



Rate - Add a Fully Protected Two-way Bike lane, Retain Some Parking, and Remove One Northbound Travel Lane



Rate - No Project Build

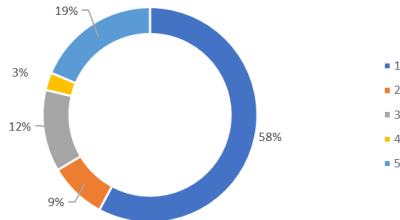
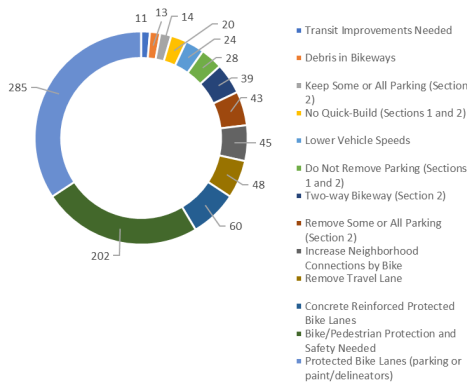


Figure 5 – Top Comments on Proposed Transportation Safety Improvements

Top Comments on Proposed Transportation Safety Improvements



Next Steps

Currently, the project team is working to refine the project proposal for Section 1 – Bayshore Boulevard from Silver to Oakdale avenues. A final staff recommended project design along with information about the SFMTA Public Hearing will be anticipated by late summer or early fall of this year.

Section 2 – Bayshore Boulevard from Oakdale to Jerrold avenues will be further analyzed and potentially become part of a future project where the needs of the roadway can be better met through longer-term, capital construction work.