




Project Design Elements

 **Left-Turn Restrictions**
at Dolores
(both directions, M-F 7-9AM, 4-7PM)

at Guerrero
(both directions)

 **Transit Lane**
on 16th St (westbound)

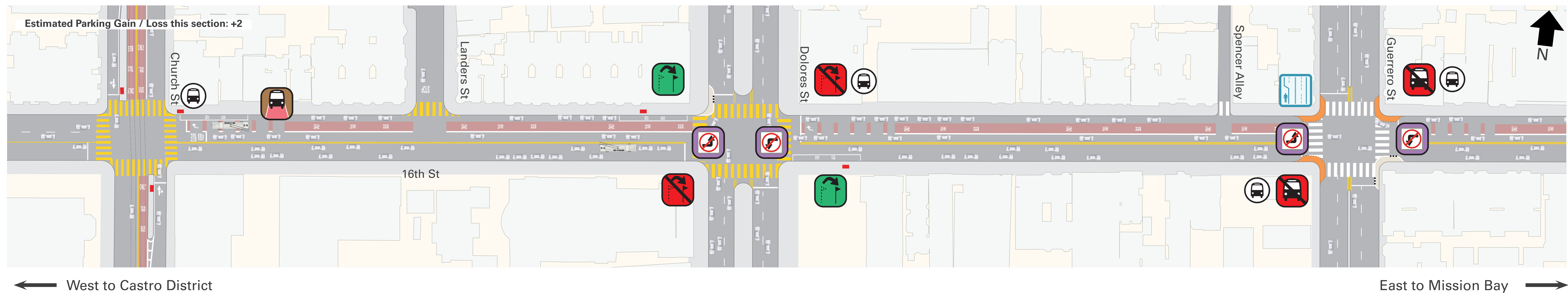
 **Remove Stops**
at Guerrero (both directions)

Approved Relocation of Stops
at Dolores (both directions)

 New Location

 Current Location

 Existing Stop



All signalized intersections on this corridor include **pedestrian countdown signals** and **continental crosswalks**.

 **Pedestrian Bulbs**
added at key locations shown in orange

For general information 24/7/365, dial 311 (415.701.2311 outside SF).
 311 Free language assistance / 免費語言協助 / Ayuda gratis con el idioma / Бесплатная помощь переводчиков / Trợ giúp Thông dịch Miễn phí / Assistance linguistique gratuite / 無料の言語支援 / 무료 언어 지원 / Libreng tulong para sa wikang Tagalog / ความช่วยเหลือทางภาษาไทยไม่เสียค่าใช้จ่าย

Note: Street details for side streets may not be pictured.

Project Design Elements



Left-Turn Restrictions

at Valencia
(both directions)

at Capp
(both directions, M-F 7-9AM, 4-7PM)



Transit Lane

on 16th St (westbound)



Transit Bulbs

at Mission (both directions)

Approved Relocation of Stops

at Valencia (both directions)



New Location

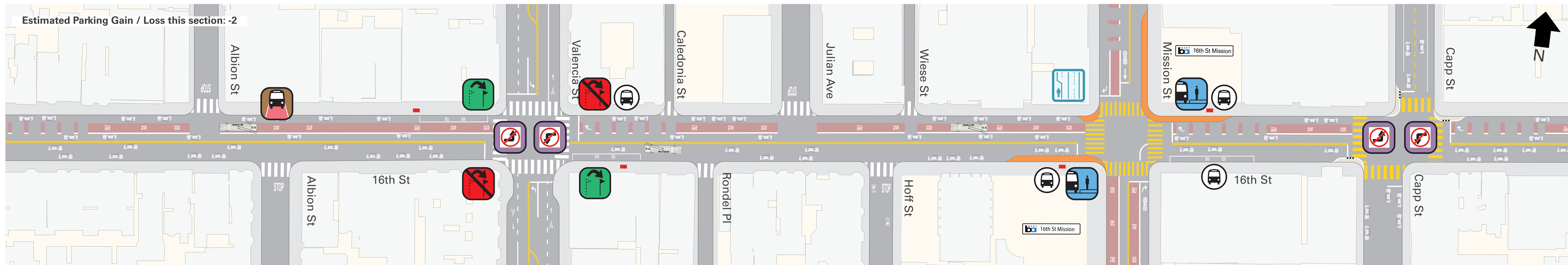


Current Location

Note: Relocation to be determined based on existing parklets and community outreach.

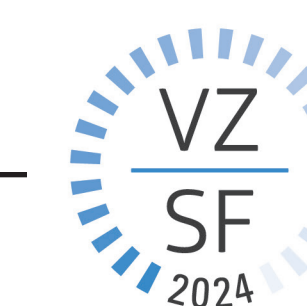


Existing Stop



← West to Castro District

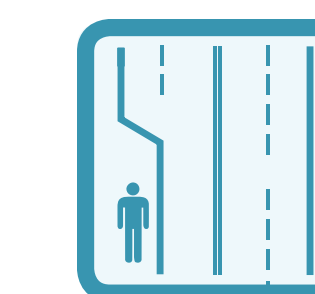
→ East to Mission Bay



VISION
ZERO
SF

SAFETY
IN ACTION

All signalized intersections on this corridor include **pedestrian countdown signals** and **continental crosswalks**.



Pedestrian Bulbs

added at key locations shown in orange

For general information 24/7/365, dial 311 (415.701.2311 outside SF).

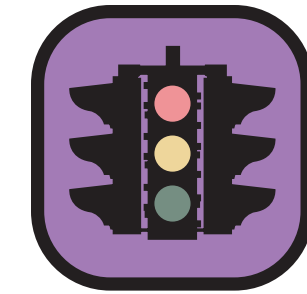
311 Free language assistance / 免費語言協助 / Ayuda gratis con el idioma / Бесплатная помощь переводчиков / Trợ giúp Thông dịch Miễn phí / Assistance linguistique gratuite / 無料の言語支援 / 무료 언어 지원 / Libreng tulong para sa wikang Tagalog / ความช่วยเหลือทางภาษาไทยไม่เสียค่าใช้จ่าย

Note: Street details for side streets may not be pictured.

Project Design Elements



Left-Turn Restrictions
at Shotwell
(both directions, M-F 7-9AM, 4-7PM)



Traffic Signal
at Shotwell



Transit Lane
on 16th St (westbound)

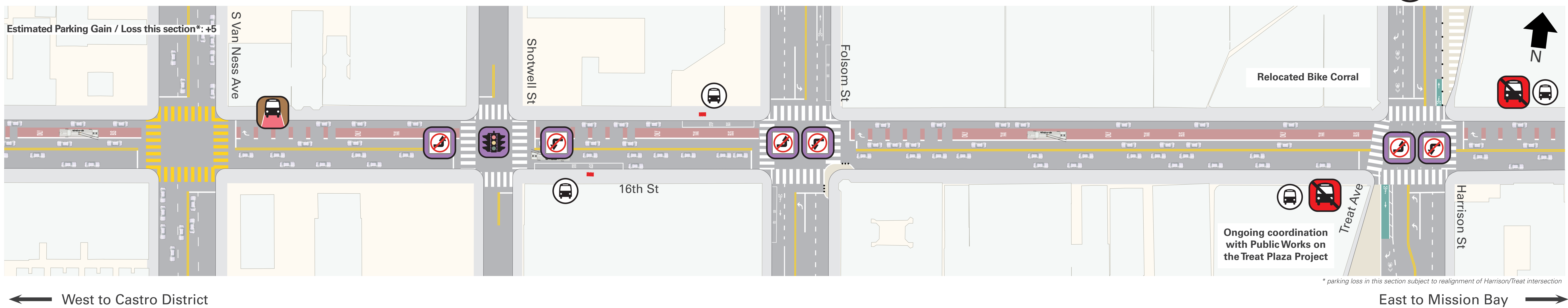


Remove Stops
at Harrison (both directions)

at Folsom
(both directions)

at Harrison
(both directions, except Muni)

 Existing Stop



All signalized intersections on this corridor include **pedestrian countdown signals** and **continental crosswalks**.

 **Pedestrian Bulbs**
added at key locations
shown in **orange**

For general information 24/7/365, dial 311 (415.701.2311 outside SF).
 311 Free language assistance / 免費語言協助 / Ayuda gratis con el idioma / Бесплатная помощь переводчиков / Trợ giúp Thông dịch Miễn phí / Assistance linguistique gratuite / 無料の言語支援 / 무료 언어 지원 / Libreng tulong para sa wikang Tagalog / ความช่วยเหลือทางภาษาโดยไม่เสียค่าใช้จ่าย

Note: Street details for side streets may not be pictured.

Project Design Elements



Left-Turn Restrictions

at Alabama
(both directions, M-F, 7-9AM, 4-7PM)

at Florida
(both directions, M-F, 7-9AM, 4-7PM)

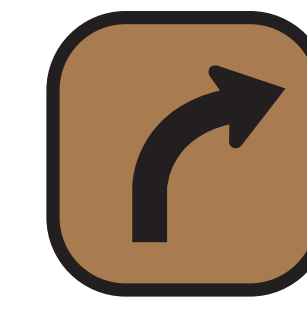
at Bryant
(both directions, M-F, 7-9AM, 4-7PM)

at Potrero
(both directions, except Muni)



Transit Lanes

on 16th St (both directions)



Right Turn Pocket

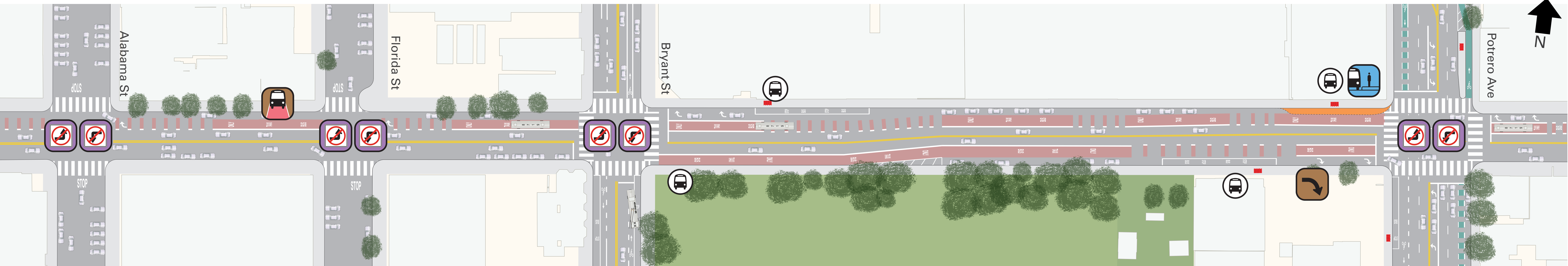
at Potrero



Transit Bulb

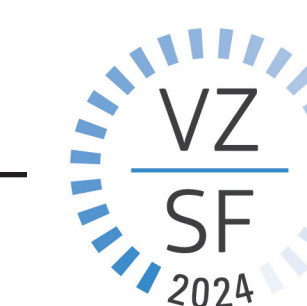
at Potrero

Existing Stop



West to Castro District

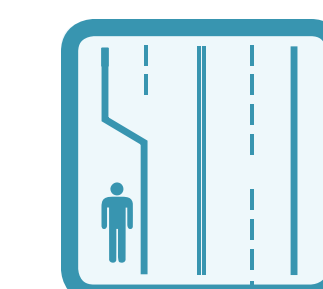
East to Mission Bay



VISION ZERO SF

SAFETY IN ACTION

All signalized intersections on this corridor include **pedestrian countdown signals** and **continental crosswalks**.



Pedestrian Bulbs

added at key locations shown in orange

For general information 24/7/365, dial 311 (415.701.2311 outside SF).

311 Free language assistance / 免費語言協助 / Ayuda gratis con el idioma / Бесплатная помощь переводчиков / Trợ giúp Thông dịch Miễn phí / Assistance linguistique gratuite / 無料の言語支援 / 무료 언어 지원 / Libreng tulong para sa wikang Tagalog / ความช่วยเหลือทางภาษาโดยไม่เสียค่าใช้จ่าย

Note: Street details for side streets may not be pictured.