



SFMTA

# July 30, 2021

# Engineering Public Hearing

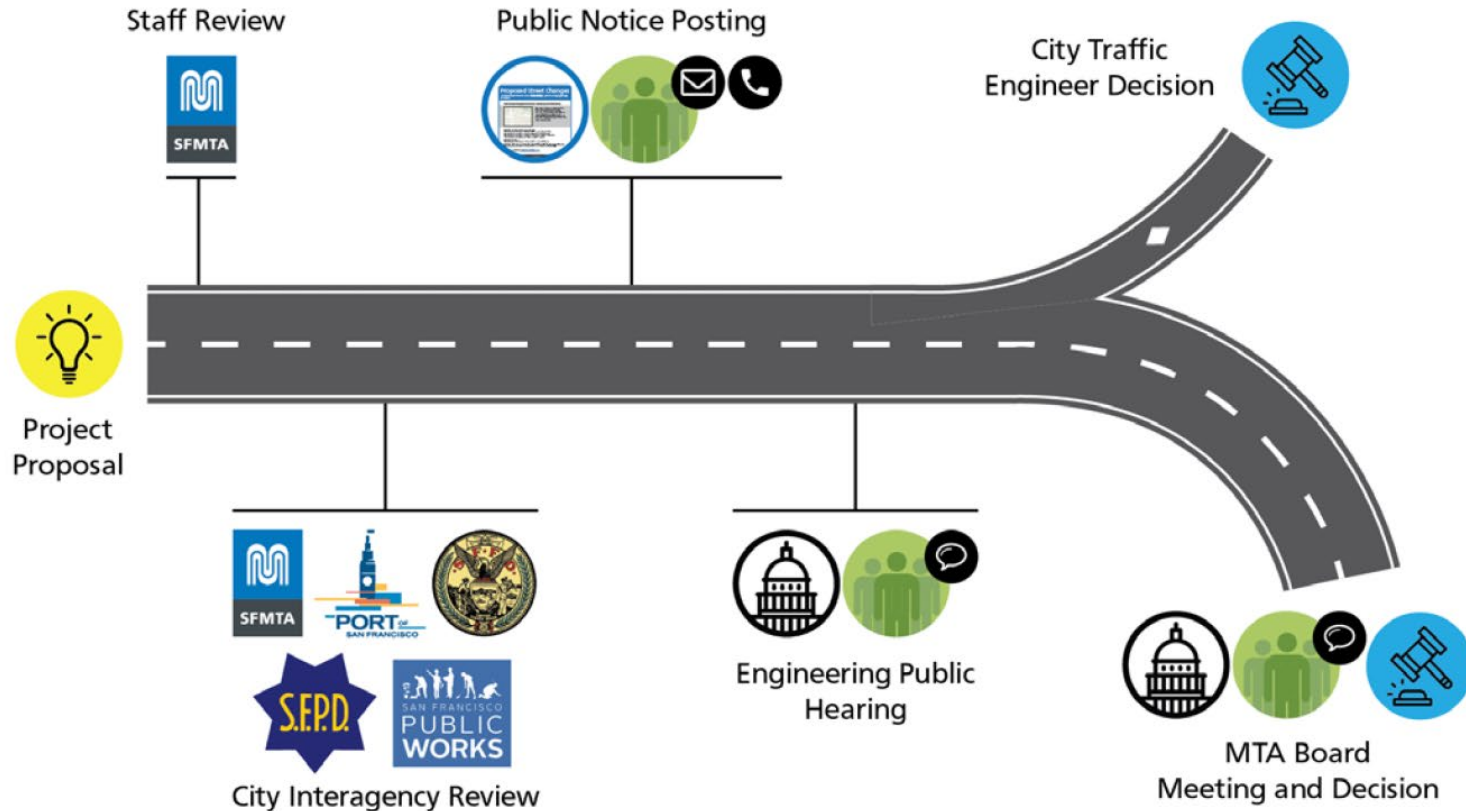
<https://sfmta.com/enghearing>

Conference Line: 888-398-2342

Participation Code: 8647385#

# Proposed Street Changes

How does a proposed street change get approved?



<https://www.sfmta.com/committees/engineering-public-hearings>

# Public Hearing Decision Posting

Results will be posted by  
5 PM next Friday

<https://www.sfmta.com/calendar/engineering-public-hearing-meeting-july-30-2021>

## Referenced Materials

Engineering Public Hearing Agenda, July 17, 2020

 [Engineering Public Hearing Agenda, July 17, 2020](#)

Engineering Public Hearing Results, July 17, 2020

 [Engineering Public Hearing Results, July 17, 2020](#)





SFMTA

# July 30, 2021

# Engineering Public Hearing

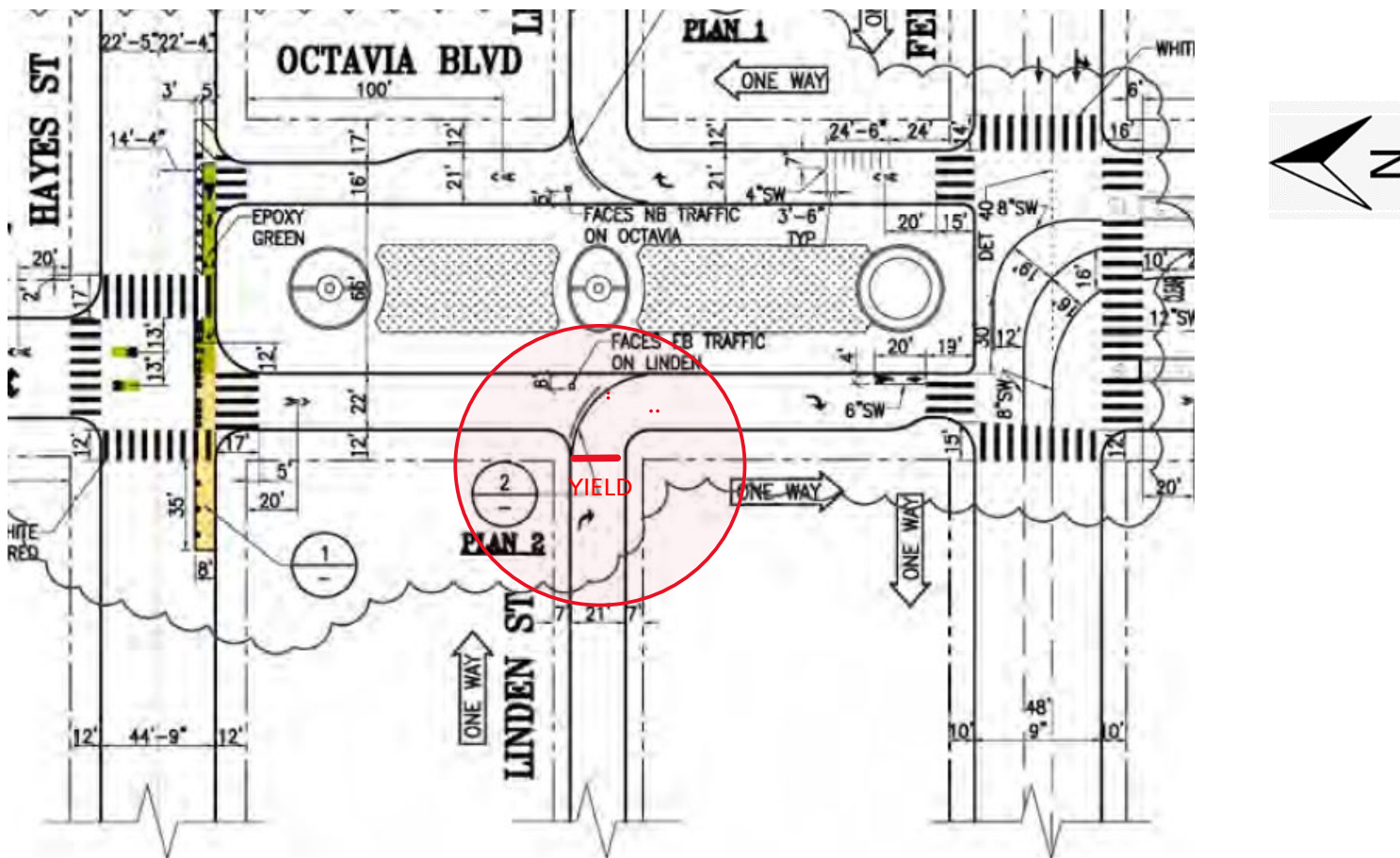
<https://sfmta.com/enghearing>

Conference Line: 888-398-2342

Participation Code: 8647385#

## 1. ESTABLISH – YIELD SIGN

Linden Street, eastbound, at Octavia Boulevard (Supervisor District 5) (Approvable by the City Traffic Engineer) Jeffrey Tom, jeffrey.tom@sfmta.com



Conference Line: **1-888-398-2342** (use participation code: 8647385)

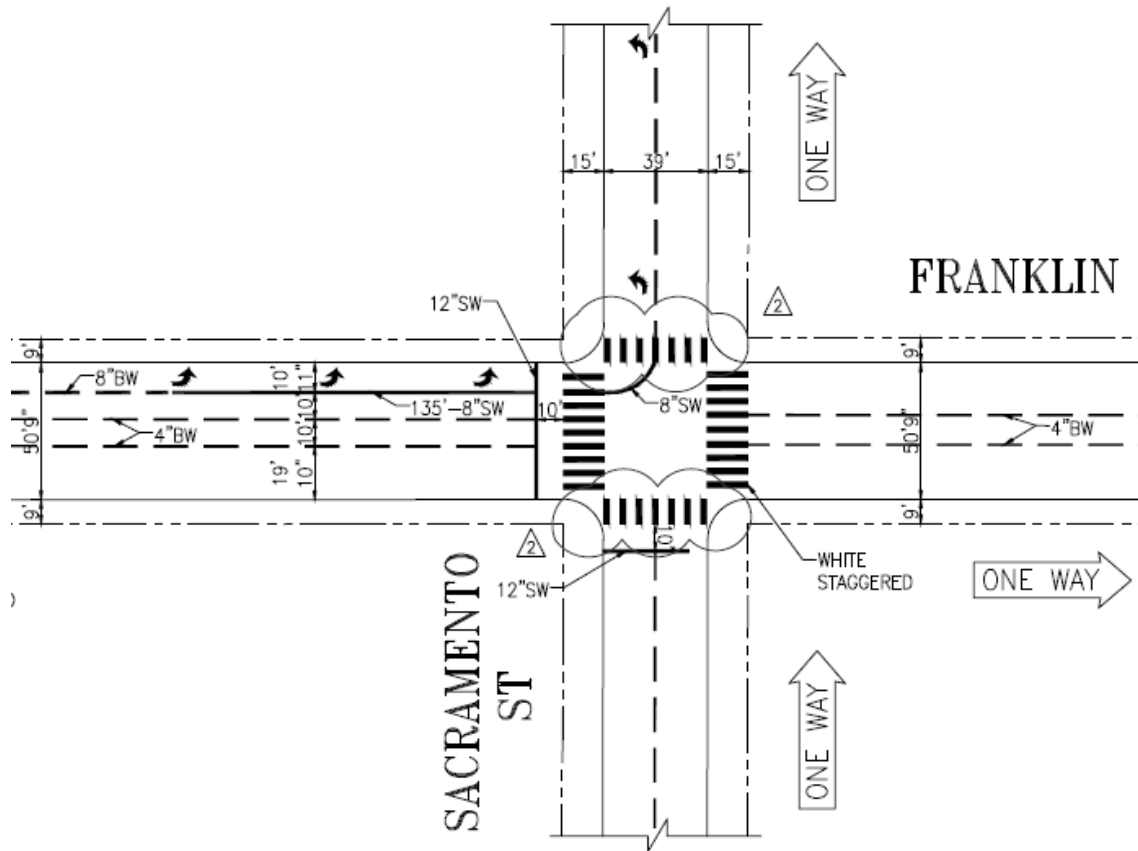
To comment on an item, press "1" and then "0" when prompted.

## 2. ESTABLISH – NO TURN ON RED

Sacramento Street, westbound, at Franklin Street

Franklin Street, northbound, at Sacramento Street

(Supervisor District 2) (Approvable by the City Traffic Engineer) Jeffrey Tom, jeffrey.tom@sfmta.com



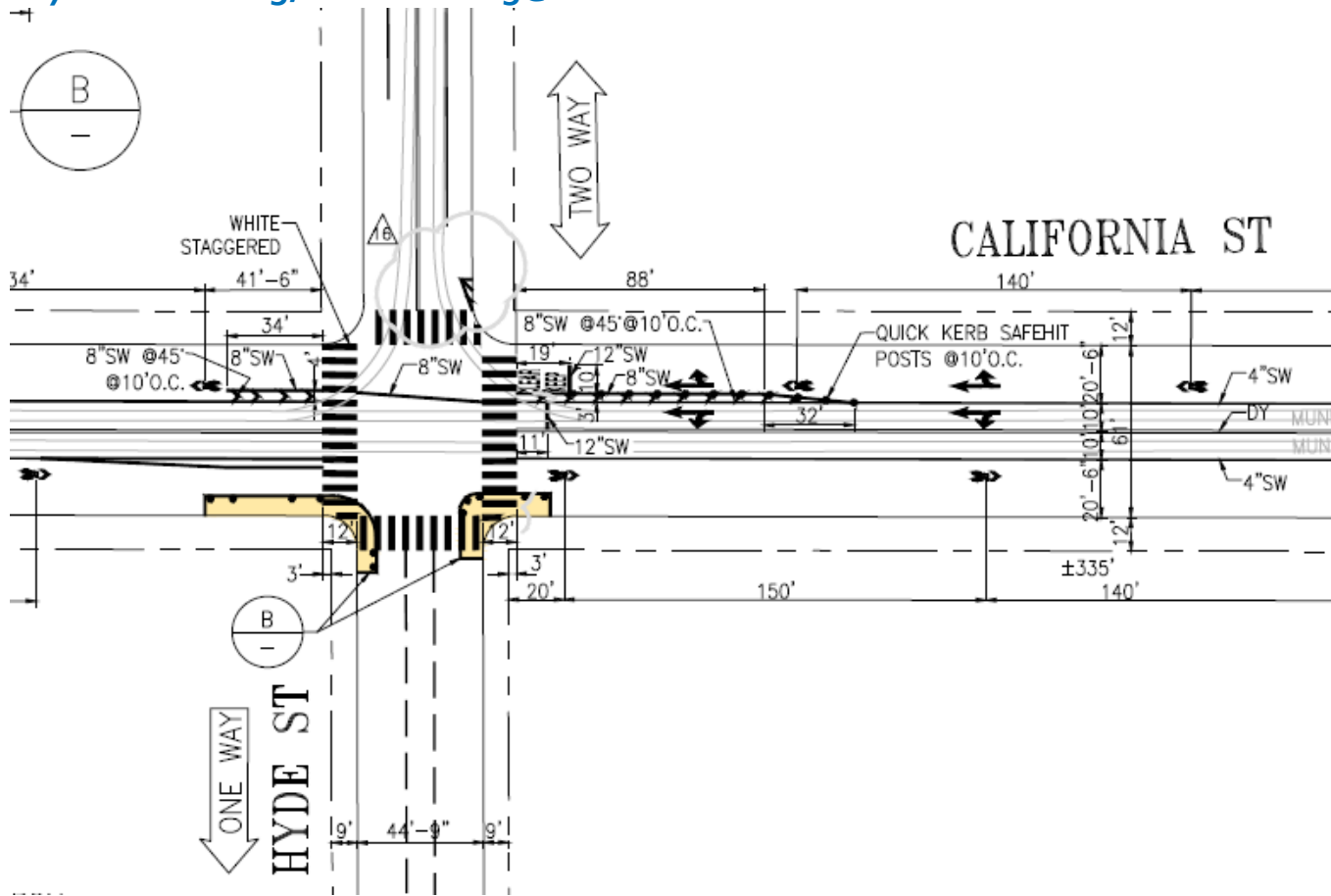
Conference Line: **1-888-398-2342** (use participation code: 8647385)

To comment on an item, press "1" and then "0" when prompted.



#### 4. ESTABLISH – NO TURN ON RED

California Street, westbound, approaching Hyde Street (Supervisor District 3) (Approvable by the City Traffic Engineer) Edward Tang, edward.tang@sfmta.com



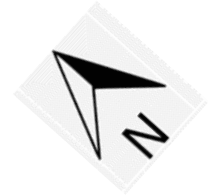
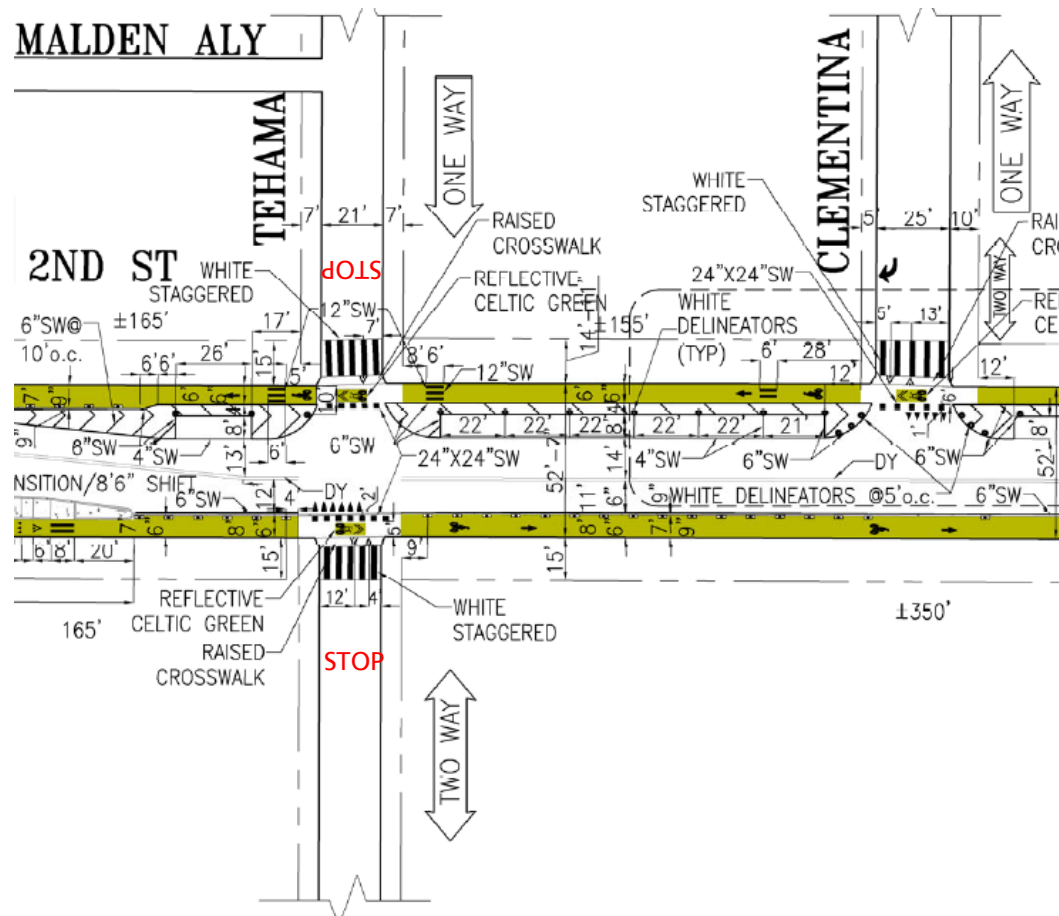
Conference Line: **1-888-398-2342** (use participation code: 8647385)

To comment on an item, press "1" and then "0" when prompted.



## 5. ESTABLISH - STOP SIGNS

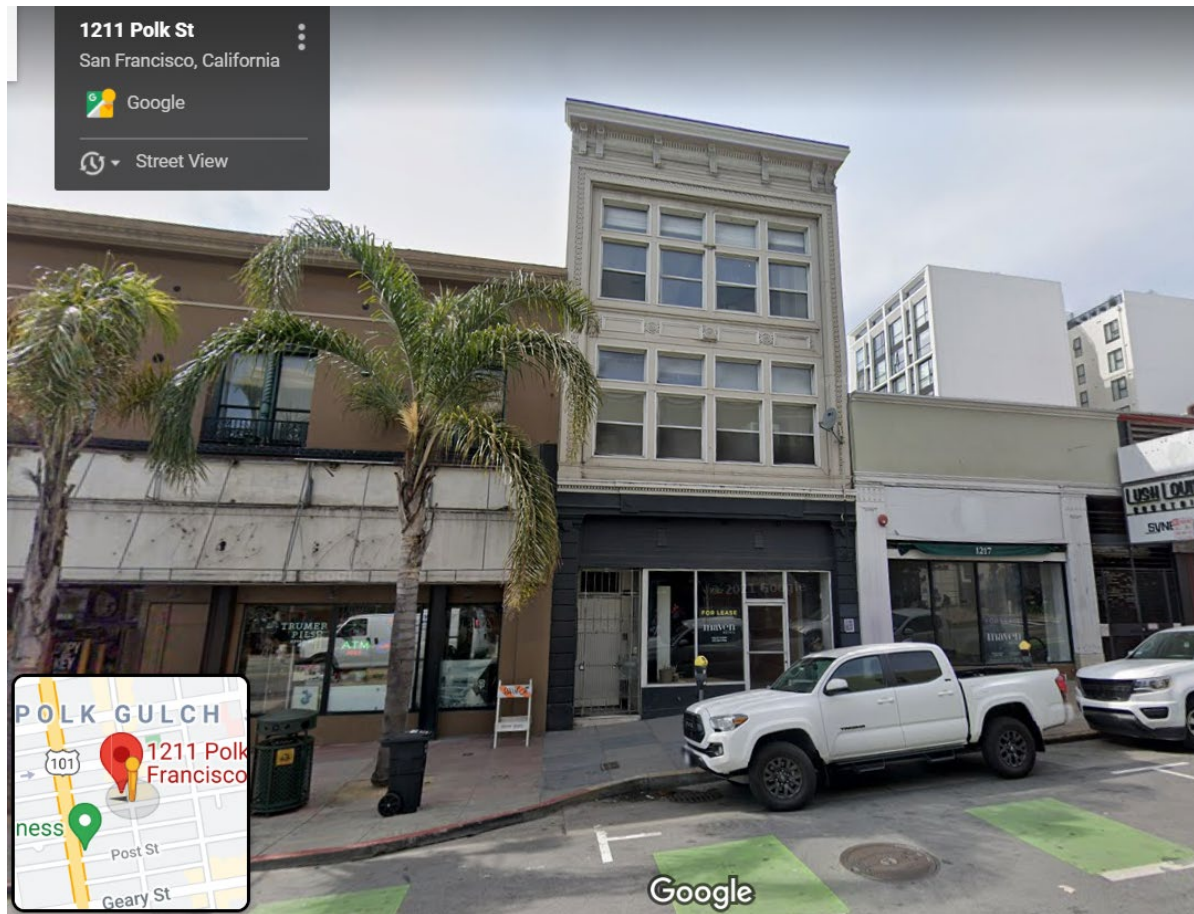
Tehama Street, eastbound and westbound at 2nd Street (Supervisor District 6) (Approvable by the City Traffic Engineer) Maurice Growney, maurice.growney@sfmta.com



Conference Line: **1-888-398-2342** (use participation code: 8647385)

To comment on an item, press "1" and then "0" when prompted.

**6. ESTABLISH-RESIDENTIAL PERMIT PARKING AREA C (Eligibility only, no signs)**  
**1211 Polk Street eligibility for residents (Supervisor District 3) (Requires approval by the SFMTA Board)**  
**Gerry Porras, gerry.porras@sfmta.com**



Conference Line: **1-888-398-2342** (use participation code: 8647385)  
To comment on an item, press "1" and then "0" when prompted.

**7. ESTABLISH-RESIDENTIAL PERMIT PARKING AREA I (Eligibility only, no signs)**  
**1-11 Lilac Street eligibility for residents (Supervisor District 9) (Requires approval by the SFMTA Board)**  
**Gerry Porras, gerry.porras@sfmta.com**

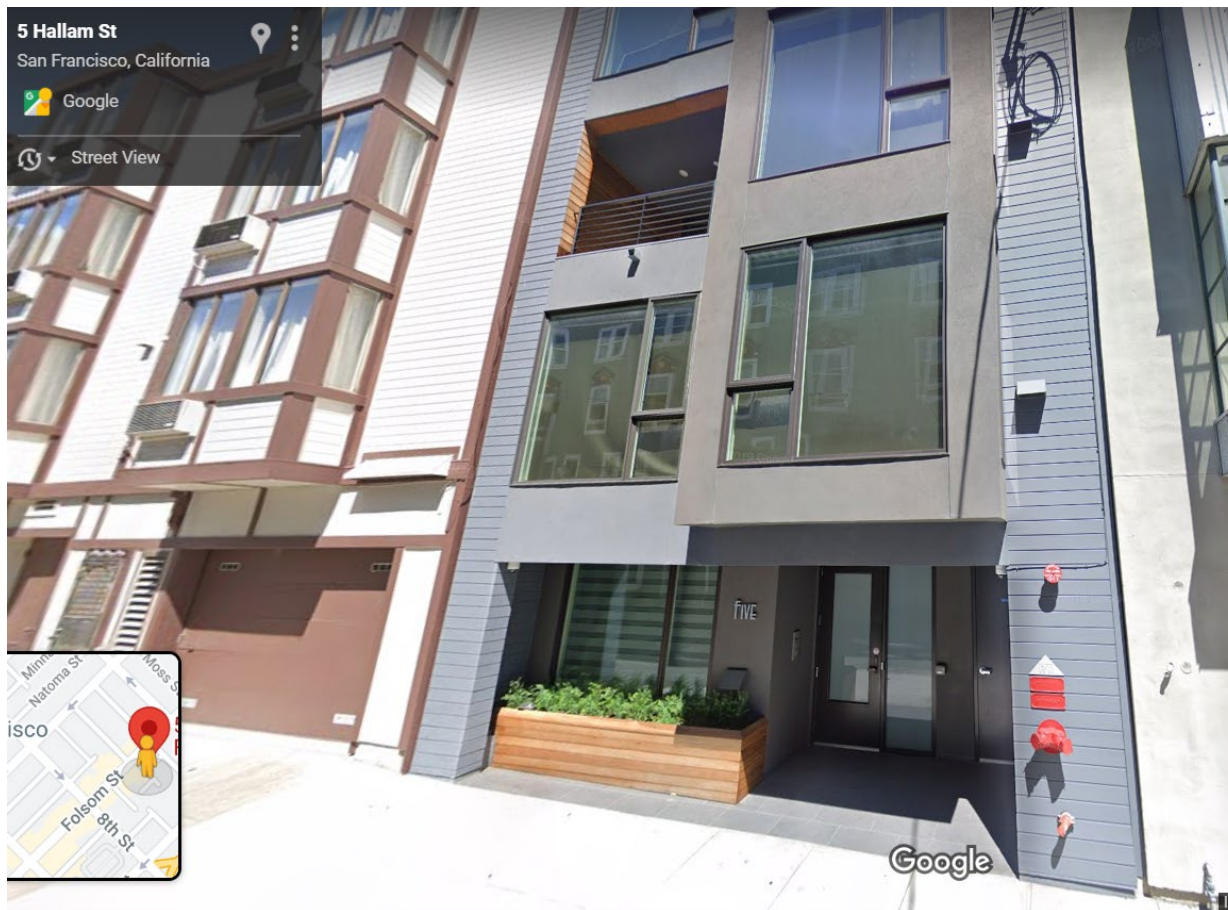


Conference Line: **1-888-398-2342** (use participation code: 8647385)

To comment on an item, press "1" and then "0" when prompted.



**8. ESTABLISH-RESIDENTIAL PERMIT PARKING AREA U (Eligibility only, no signs)**  
**5 Hallam Street eligibility for residents (Supervisor District 6) (Requires approval by the SFMTA Board)**  
**Gerry Porras, gerry.porras@sfmta.com**



Conference Line: **1-888-398-2342** (use participation code: 8647385)  
To comment on an item, press "1" and then "0" when prompted.

**9. ESTABLISH - RESIDENTIAL PERMIT PARKING AREA X (Eligibility only, no signs)**  
**655 Kansas Street (Supervisor District 10) (Requires approval by the SFMTA Board) Raynell Cooper,**  
**raynell.cooper@sfmta.com**



Conference Line: **1-888-398-2342** (use participation code: 8647385)

To comment on an item, press "1" and then "0" when prompted.



**10. ESTABLISH-RESIDENTIAL PERMIT PARKING AREA U (Eligibility only, no signs)**  
**766 Harrison Street eligibility for residents (Supervisor District 6) (Requires approval by the SFMTA Board)**  
**Gerry Porras, gerry.porras@sfmta.com**



Conference Line: **1-888-398-2342** (use participation code: 8647385)

To comment on an item, press "1" and then "0" when prompted.

**11. ESTABLISH - RESIDENTIAL PERMIT PARKING AREA S (Eligibility only, no signs)**  
**11 Franklin Street (Supervisor District 5) (Requires approval by the SFMTA Board) Raynell Cooper,**  
[raynell.cooper@SFMTA.com](mailto:raynell.cooper@SFMTA.com)

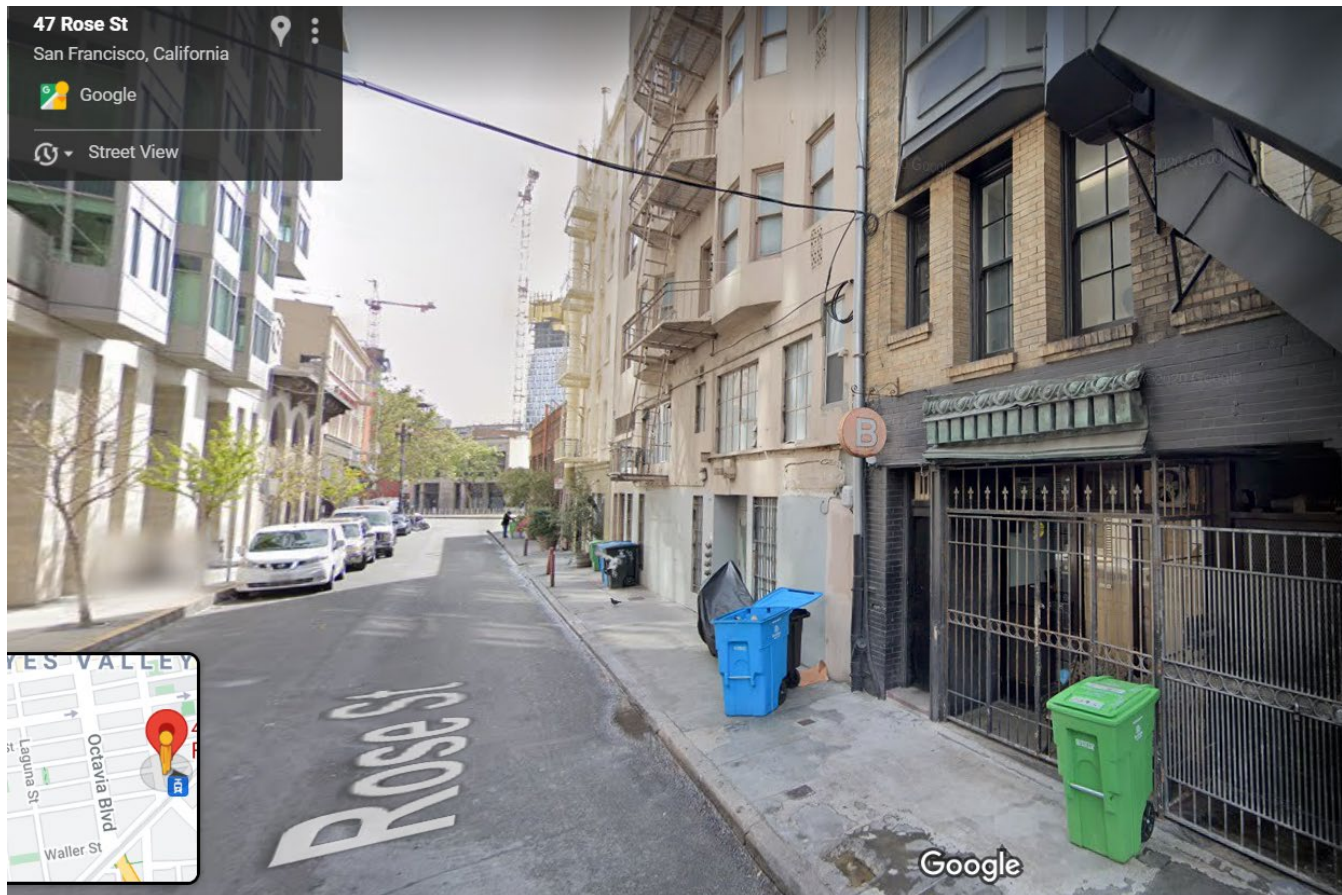


Conference Line: **1-888-398-2342** (use participation code: 8647385)

To comment on an item, press "1" and then "0" when prompted.



**12. ESTABLISH - RESIDENTIAL PERMIT PARKING AREA S (Eligibility only, no signs)**  
**Unit block of Rose Street, south side (Supervisor District 5) (Requires approval by the SFMTA Board)**  
**Raynell Cooper, raynell.cooper@sfmta.com**

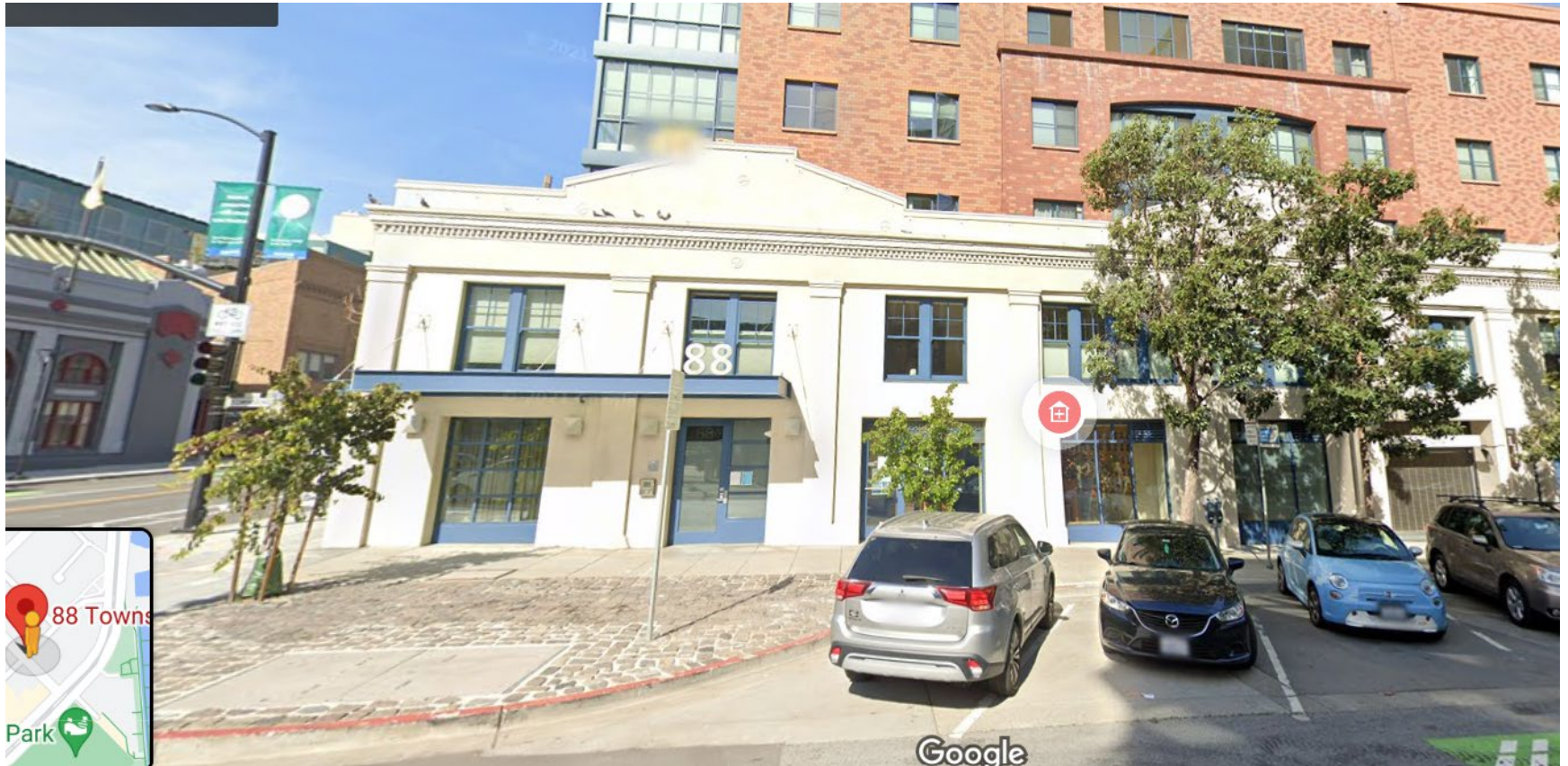


Conference Line: **1-888-398-2342** (use participation code: 8647385)

To comment on an item, press "1" and then "0" when prompted.



**13. ESTABLISH - RESIDENTIAL PERMIT PARKING AREA Y (Eligibility only, no signs)**  
**88 Townsend Street (Supervisor District 6) (Requires approval by the SFMTA Board) Raynell Cooper,**  
**raynell.cooper@sfmta.com**



Conference Line: **1-888-398-2342** (use participation code: 8647385)

To comment on an item, press "1" and then "0" when prompted.

**14. ESTABLISH - RESIDENTIAL PERMIT PARKING AREA C (Eligibility only, no signs)**  
**536 Leavenworth (Supervisor District 6) (Requires approval by the SFMTA Board) Raynell Cooper,**  
**raynell.cooper@sfmta.com**

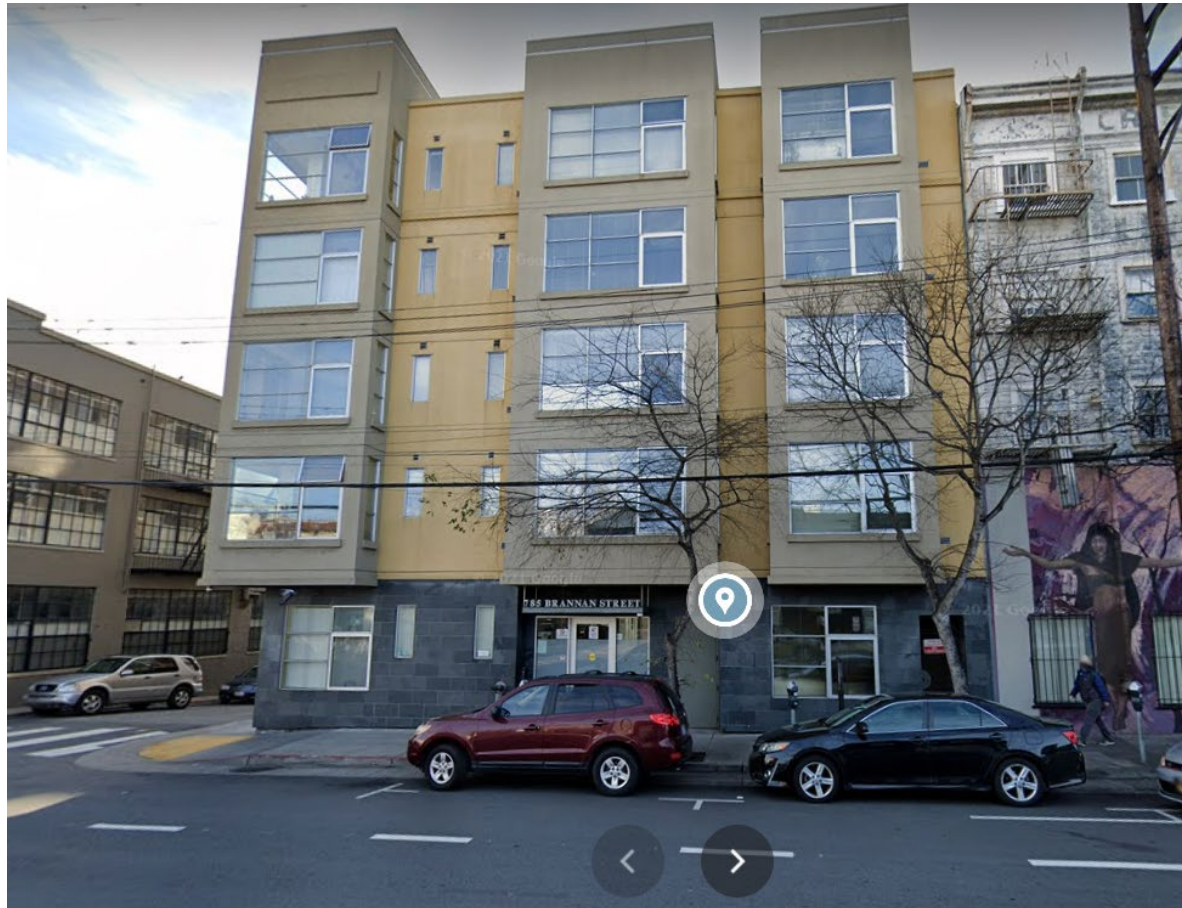


Conference Line: **1-888-398-2342** (use participation code: 8647385)

To comment on an item, press "1" and then "0" when prompted.



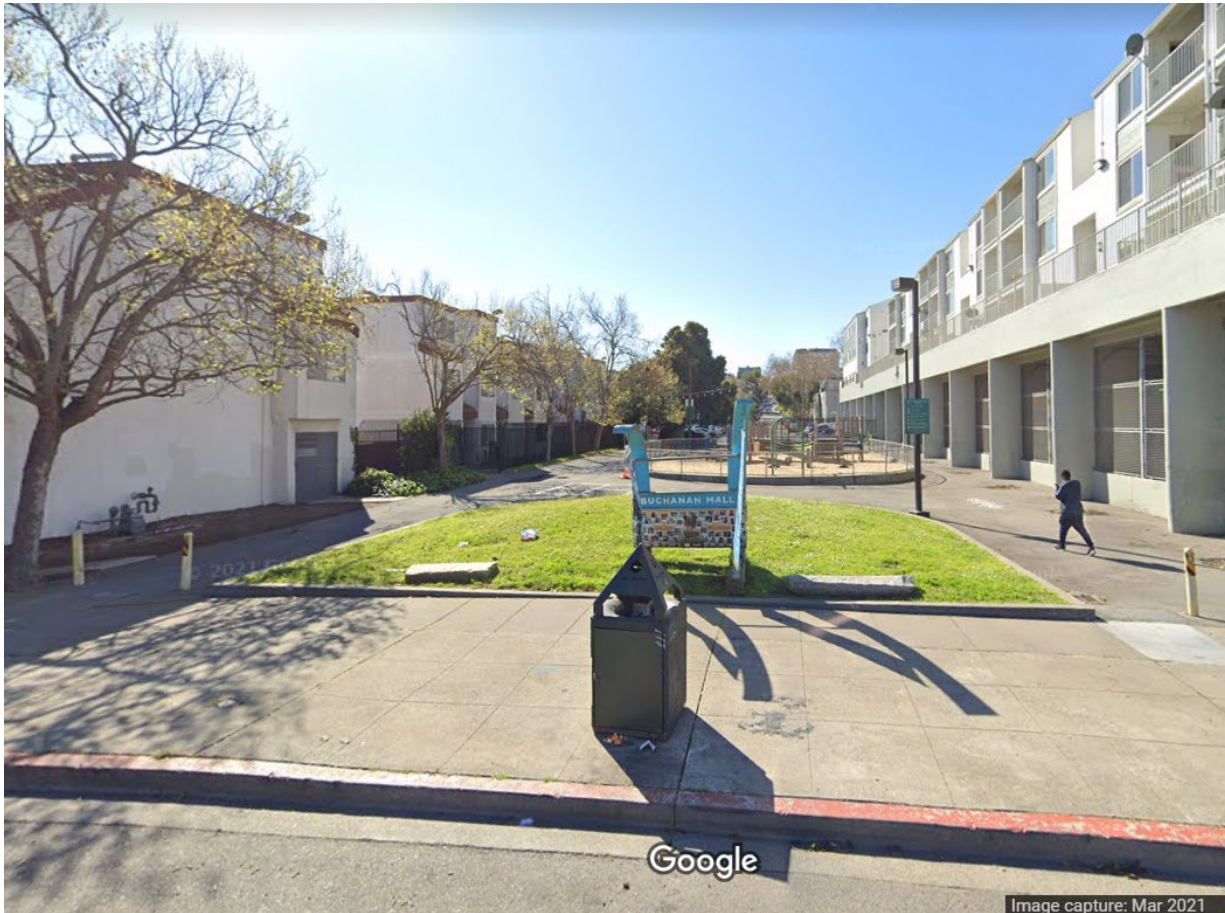
**15. ESTABLISH - RESIDENTIAL PERMIT PARKING AREA U (Eligibility only, no signs)**  
**785 Brannan Street (Supervisor District 6) (Requires approval by the SFMTA Board) Gerry Porras,**  
**[gerry.porras@sfmta.com](mailto:gerry.porras@sfmta.com)**



Conference Line: **1-888-398-2342** (use participation code: 8647385)

To comment on an item, press "1" and then "0" when prompted.

**16. ESTABLISH - RESIDENTIAL PERMIT PARKING AREA S (Eligibility only, no signs)**  
**800 block of Buchanan Street, both sides, between Grove Street and Fulton Street (Supervisor District 5)**  
**(Requires approval by the SFMTA Board) Raynell Cooper, raynell.cooper@sfmta.com**

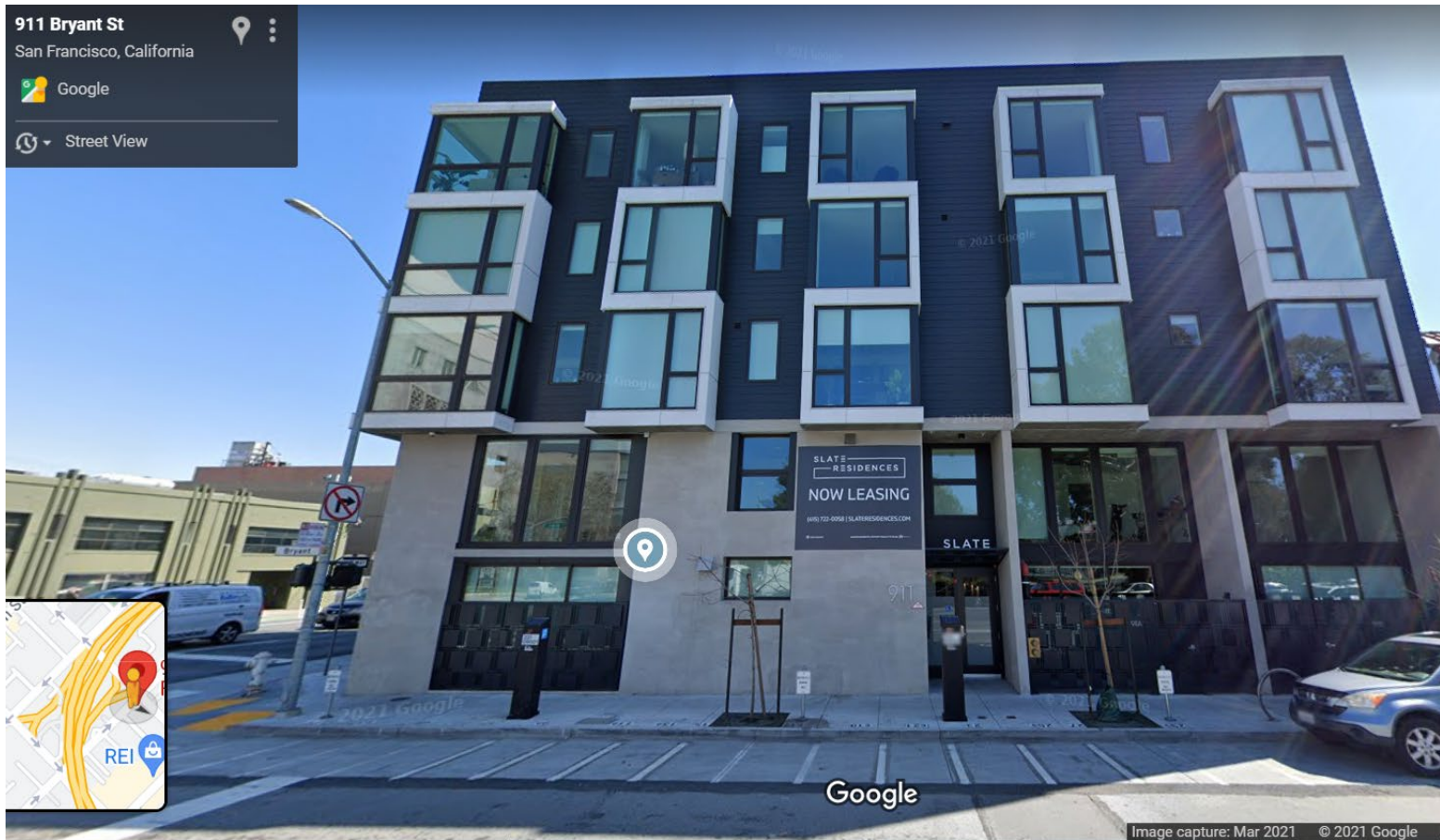


Conference Line: **1-888-398-2342** (use participation code: 8647385)

To comment on an item, press "1" and then "0" when prompted.



**17. ESTABLISH - RESIDENTIAL PERMIT PARKING AREA U (Eligibility only, no signs)**  
**911 Bryant Street and 500 7th Street (Supervisor District 6) (Requires approval by the SFMTA Board)**  
**Raynell Cooper, raynell.cooper@sfmta.com**



Conference Line: **1-888-398-2342** (use participation code: 8647385)

To comment on an item, press "1" and then "0" when prompted.

**18. ESTABLISH - RESIDENTIAL PERMIT PARKING AREA C (Eligibility only, no signs)**  
**921-925 Post Street (Supervisor District 6) (Requires approval by the SFMTA Board) Raynell Cooper,**  
**raynell.cooper@sfmta.com**



Conference Line: **1-888-398-2342** (use participation code: 8647385)

To comment on an item, press "1" and then "0" when prompted.



**19. ESTABLISH - RESIDENTIAL PERMIT PARKING AREA R (Eligibility only, no signs)  
1075 O'Farrell Street (Supervisor District 5) (Requires approval by the SFMTA Board) Raynell Cooper,  
raynell.cooper@sfmta.com**



Conference Line: **1-888-398-2342** (use participation code: 8647385)

To comment on an item, press "1" and then "0" when prompted.

**20. ESTABLISH - RESIDENTIAL PERMIT PARKING AREA S (Eligibility only, no signs)**  
**3623-3649 18th Street, south side (Supervisor District 8) (Requires approval by the SFMTA Board) Raynell Cooper, raynell.cooper@sfmta.com**



Conference Line: **1-888-398-2342** (use participation code: 8647385)

To comment on an item, press "1" and then "0" when prompted.



## 21. ESTABLISH – STOP SIGN

Rockwood Court, northbound, at Rockaway Avenue (Supervisor District 7) (Approvable by the City Traffic Engineer) Amy Chun, amy.chun@sfmta.com



Conference Line: **1-888-398-2342** (use participation code: 8647385)

To comment on an item, press "1" and then "0" when prompted.

**22(a). RESCIND – ONE-WAY STREET**

Treat Avenue, southbound, from Harrison Street to 17th Street

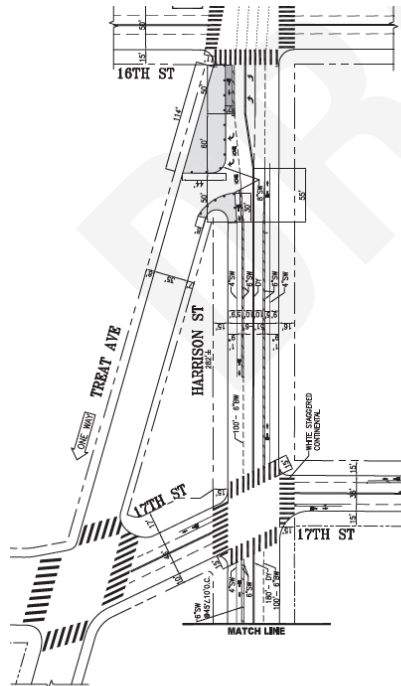
**22(b). ESTABLISH – ONE-WAY STREET**

Treat Avenue, northbound, from 17th Street to Harrison Street (reverses this existing one-way street)

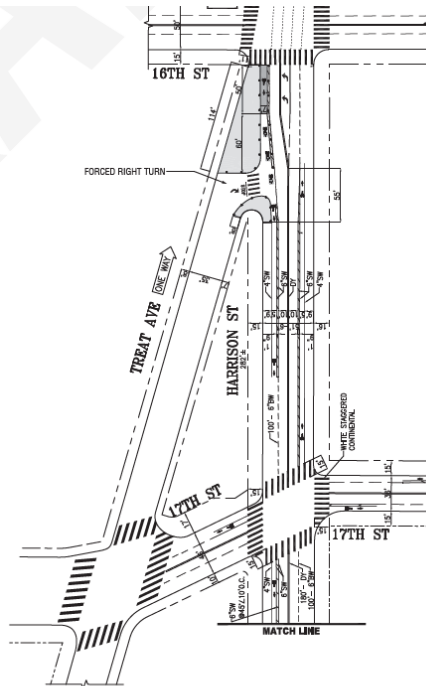
(Requires approval by the SFMTA Board)

**22(c). ESTABLISH – RIGHT TURN ONLY**

Treat Avenue, eastbound, at Harrison Street (between 16th Street and 17th Street) (Approvable by the City Traffic Engineer)



EXISTING



PROPOSED



Conference Line: **1-888-398-2342** (use participation code: 8647385)

To comment on an item, press "1" and then "0" when prompted.

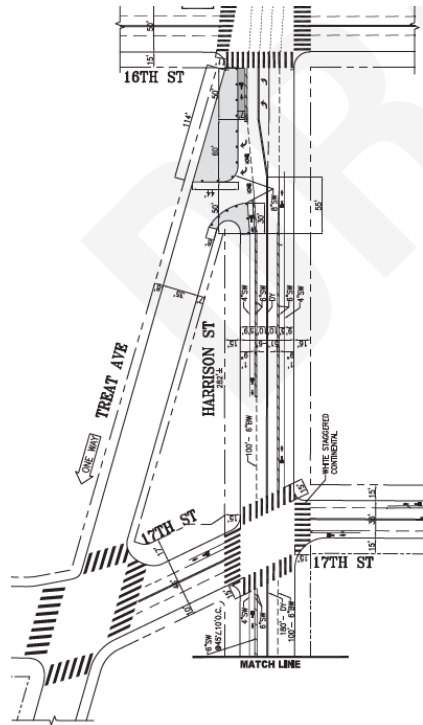
**22(d). RESCIND – STOP SIGN**

Treat Avenue, southbound, at 17th Street (removes existing stop) (Approvable by the City Traffic Engineer)

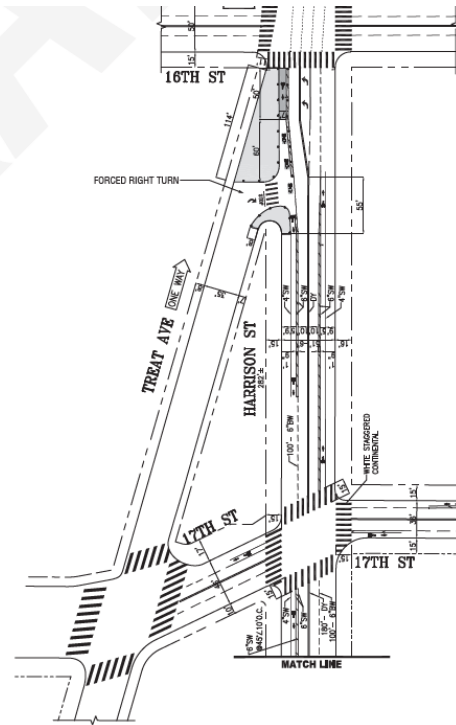
**22(e). ESTABLISH – STOP SIGN**

Treat Avenue, eastbound, at Harrison Street (between 16th Street and 17th Street)

(Supervisor District 9) (Approvable by the City Traffic Engineer) Amy Chun, amy.chun@sfmta.com



EXISTING



PROPOSED



Conference Line: **1-888-398-2342** (use participation code: 8647385)

To comment on an item, press "1" and then "0" when prompted.

**23(a). RESCIND – GENERAL METERED PARKING, 2-HOUR TIME LIMIT, 7 AM TO 6 PM, MONDAY THROUGH SATURDAY**

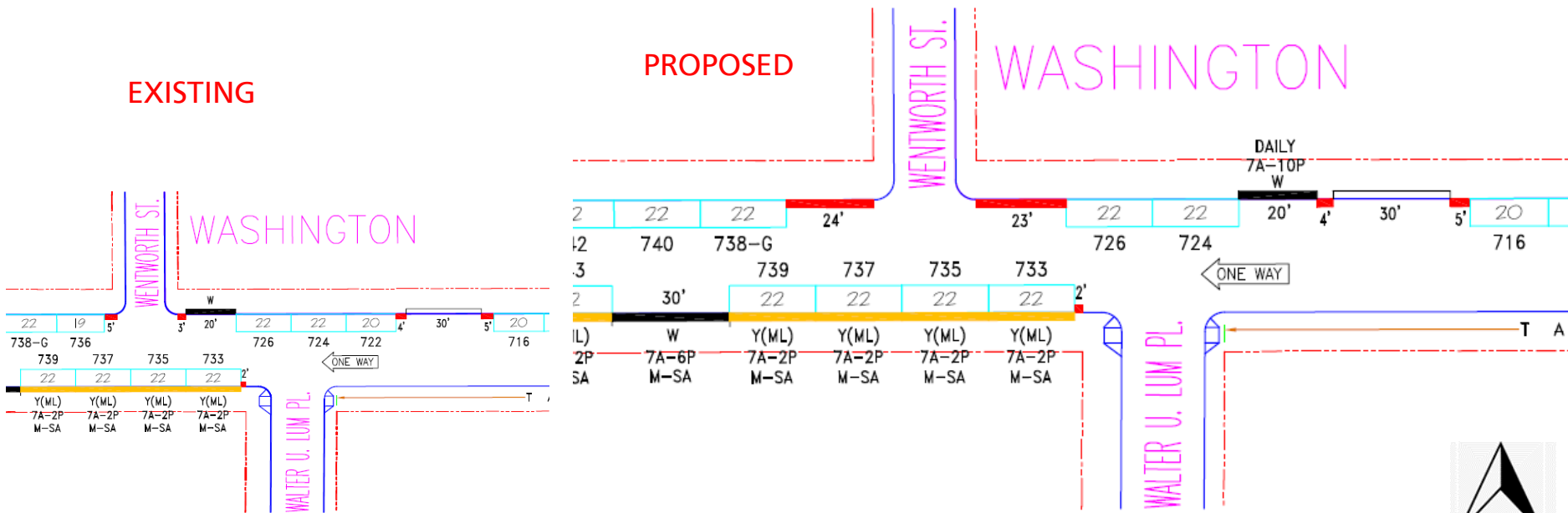
**ESTABLISH – RED ZONE**

Washington Street, north side, at 5 feet to 24 feet west of Wentworth Place (19-foot zone, replaces meter 736) (Approvable by the City Traffic Engineer)

**23(b). RESCIND – PASSENGER LOADING ZONE, 7 AM TO 10 PM, DAILY**

**ESTABLISH – RED ZONE**

Washington Street, north side, at 3 feet to 23 feet east of Wentworth Place (20-foot zone, replaces passenger loading zone) (Approvable by the City Traffic Engineer)



Conference Line: **1-888-398-2342** (use participation code: 8647385)  
 To comment on an item, press "1" and then "0" when prompted.

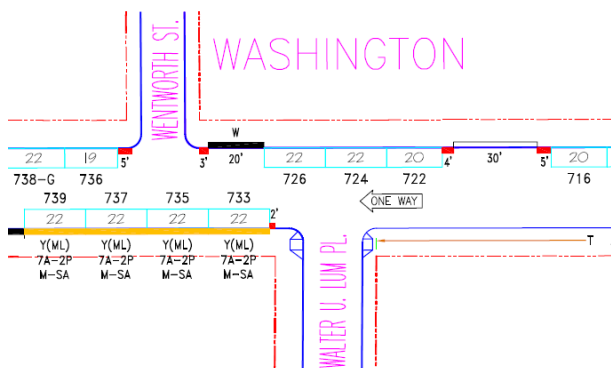
**23(c). RESCIND – GENERAL METERED PARKING, 2-HOUR TIME LIMIT, 7 AM TO 6 PM, MONDAY THROUGH SATURDAY**

**ESTABLISH – PASSENGER LOADING ZONE, 7 AM TO 10 PM, DAILY**

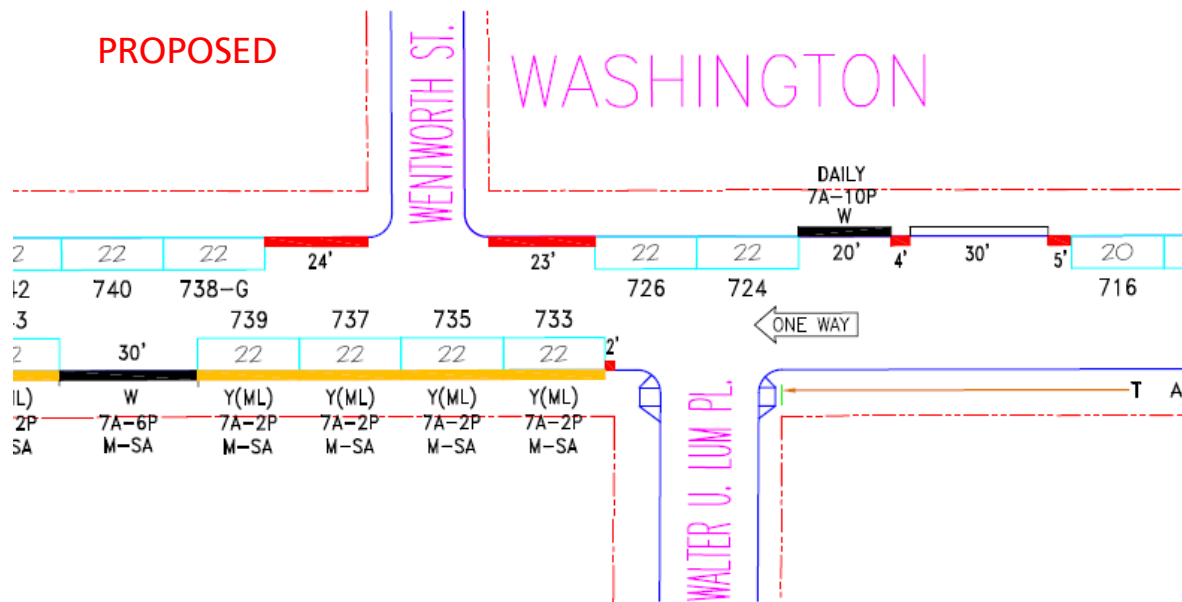
Washington Street, north side, at 67 feet to 87 feet east of Wentworth Place (replaces meter 722)  
 (Supervisor District 3) (Approvable by the City Traffic Engineer) Amy Chun, amy.chun@sfmta.com



**EXISTING**



**PROPOSED**



Conference Line: **1-888-398-2342** (use participation code: 8647385)  
 To comment on an item, press "1" and then "0" when prompted.

24(a). RESCIND – METERED YELLOW ZONE, COMMERCIAL LOADING, 30-MINUTE TIME LIMIT, 7 AM TO 6 PM, MONDAY THROUGH SATURDAY

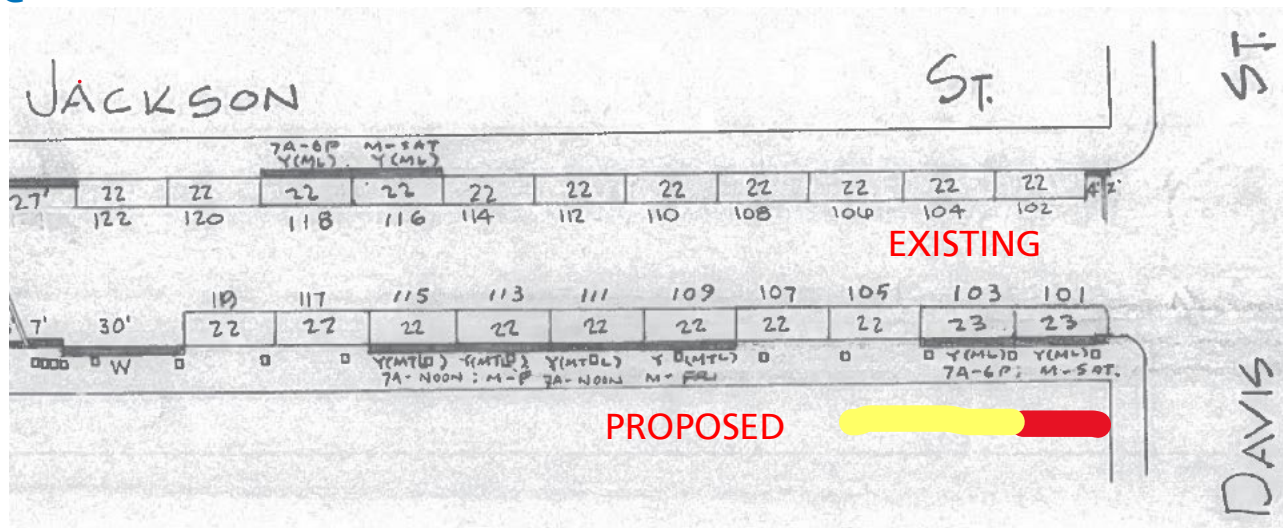
ESTABLISH – RED ZONE

Jackson Street, south side, from Davis Street to 23 feet westerly (replaces 23-foot yellow zone, meter 101) (Approvable by the City Traffic Engineer)

24(b). RESCIND – GENERAL METERED PARKING, 2-HOUR TIME LIMIT, 9 AM TO 6 PM, MONDAY THROUGH SATURDAY

ESTABLISH – METERED YELLOW ZONE, COMMERCIAL LOADING, 30-MINUTE TIME LIMIT, 7 AM TO 6 PM, MONDAY THROUGH SATURDAY

Jackson Street, south side, from 46 feet to 68 feet west of Davis Street (22-foot space, relocates yellow zone from meter 101 to 105) (Supervisor District 3) (Approvable by the City Traffic Engineer) Amy Chun, amy.chun@sfmta.com



Conference Line: **1-888-398-2342** (use participation code: 8647385)

To comment on an item, press "1" and then "0" when prompted.



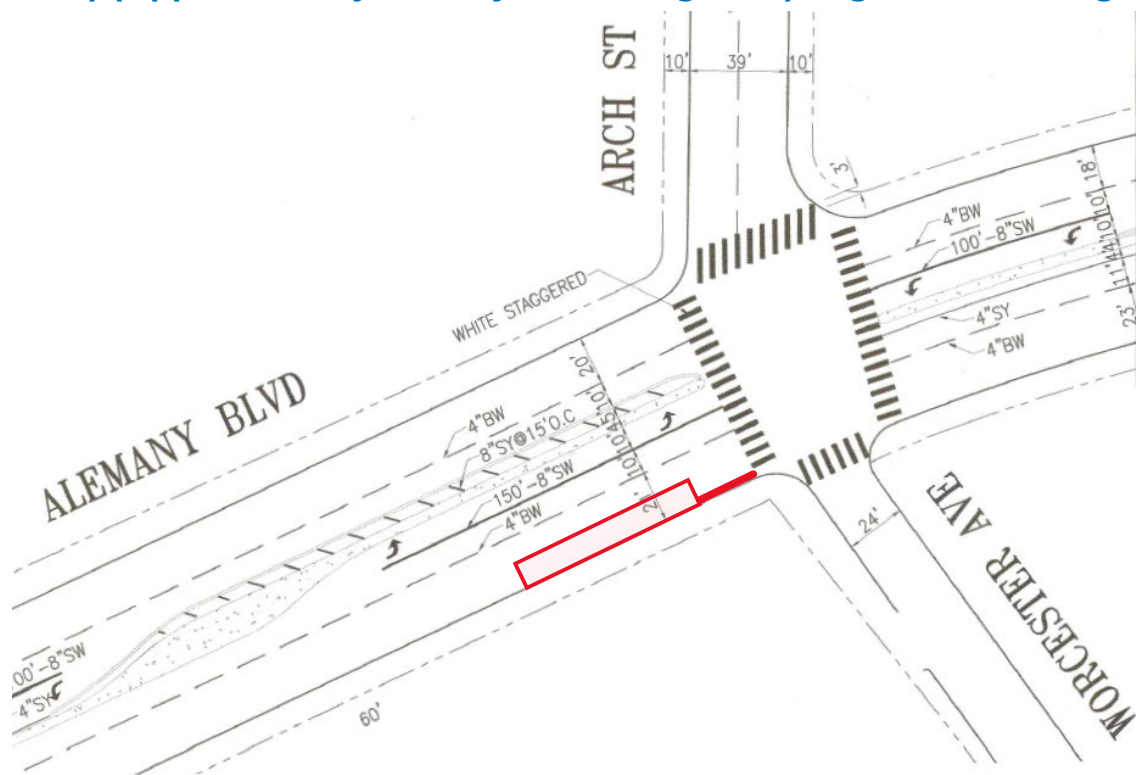
**25(a). ESTABLISH - BUS ZONE**

Alemaný Boulevard, south side, from 20 feet to 112 feet west of Worcester Avenue (Requires approval by the SFMTA Board)

**25(b). ESTABLISH - RED ZONE**

Alemaný Boulevard, south side, Worcester Avenue to 20 feet westerly

(Supervisor District 7) (Approvable by the City Traffic Engineer) Edgar Orozco, [edgar.orozco@sfmta.com](mailto:edgar.orozco@sfmta.com)



Conference Line: **1-888-398-2342** (use participation code: 8647385)

To comment on an item, press "1" and then "0" when prompted.

## 26(a). ESTABLISH – SPEED CUSHION

A. Williams Avenue, between Ceres Street and Mendell Street

B. Williams Avenue, between Lucy Street and Ceres Street

C. Williams Avenue, between Apollo Street and Venus Street

(Approvable by the City Traffic Engineer)



Conference Line: **1-888-398-2342** (use participation code: 8647385)

To comment on an item, press "1" and then "0" when prompted.



**26(b). ESTABLISH – RED ZONE**

- A. Williams Avenue, south side, from Phelps Street to 50 feet easterly
- B. Williams Avenue, north side, from Vesta Street to 30 feet easterly
- C. Williams Avenue, south side, from 60 feet west of Apollo Street to 30 feet east of the west side crosswalk (painted safety zone)
- D. Apollo Street, west side from Williams Avenue to 10 feet northerly
- E. Williams Avenue, north side, from Venus Street to 22 feet easterly
- F. Williams Avenue, north side, from Neptune Street to 31 feet westerly (painted safety zone)
- G. Williams Avenue, north side, from Neptune Street to 20 feet easterly
- H. Neptune Street, west side from Williams Avenue to 10 feet northerly (painted safety zone)
- I. Williams Avenue, south side, from Newhall Street to 28 feet easterly (painted safety zone)
- J. Newhall Street, east side from Williams Avenue to 10 feet southerly (painted safety zone)
- K. Williams Avenue, south side, from west side crosswalk of Reddy Street to 20 feet westerly
- L. Reddy Street, east side, from Williams Avenue to 20 feet northerly
- M. Williams Avenue, south side, from Mendell Street to 30 feet westerly
- N. Williams Avenue, south side, from Mendell Street to 20 feet easterly
- O. Williams Avenue, north side, from east side crosswalk of Mendell Street to 20 feet westerly
- P. Ceres Street, west side from Williams Avenue to 10 feet northerly
- Q. Williams Avenue, north side, from Ceres Street to 25 feet easterly
- R. Williams Avenue, north side, from Ceres Street to 10 feet westerly
- S. Williams Avenue, north side, from Lucy Street to 20 feet easterly
- T. Lucy Street, west side from Williams Avenue to 10 feet northerly  
(Approvable by the City Traffic Engineer)

**26(c). ESTABLISH – NO PARKING ANYTIME**

- A. Williams Avenue, north side from Diana Street to 50 feet west of Reddy Street
- B. Williams Avenue, south side from 48 feet to 260 feet west of Reddy Street  
(Requires approval by the SFMTA Board)

Conference Line: **1-888-398-2342** (use participation code: 8647385)

To comment on an item, press "1" and then "0" when prompted.

**26(d). ESTABLISH – STOP SIGN**

- A. Ceres Street, southbound, at Williams Avenue
- B. Lucy Street, southbound, at Williams Avenue  
(Approvable by the City Traffic Engineer)

**26(e). ESTABLISH – PERPENDICULAR PARKING**

- A. Williams Avenue, south side, from Apollo Street to 55 feet west of Venus Street
- B. Williams Avenue, north side, from Reddy Street to Mendell Street
- C. Williams Avenue, north side, from Ceres Street to Lucy Street
- D. Williams Avenue, south side, from Newhall Street to 50 feet west of Diana Street  
(Requires approval by the SFMTA Board)

**26(f). RESCIND – NO PARKING EXCEPT BICYCLES**

**RESCIND – BIKE SHARE STATION**

- Williams Avenue, south side, from Apollo Street to 53 feet easterly  
(Approvable by the City Traffic Engineer)

**26(g). ESTABLISH – NO PARKING EXCEPT BICYCLES**

**ESTABLISH – BIKE SHARE STATION**

- Williams Avenue, south side, from 30 feet to 83 feet easterly of west leg of Apollo Street (shifts an existing 42'-7" bike share station with a 3-foot red zone on the east side of the station and a 5-foot red zone on the west side of the station)  
(Approvable by the City Traffic Engineer)

**26(h). ESTABLISH – BUS ZONE**

- Williams Avenue, north side, from 3rd Street to 100 feet westerly (converts flag-stop to bus zone for 54-Felton) (Requires approval by the SFMTA Board)

**26(i). RESCIND – FLAG STOP**

- Van Dyke Avenue, north side, east of Lane Street (removes flag-stop for 54-Felton)  
(Supervisor District 10) (Requires approval by the SFMTA Board) Jen Wong, [jennifer.wong@sfmta.com](mailto:jennifer.wong@sfmta.com)

Conference Line: **1-888-398-2342** (use participation code: 8647385)

To comment on an item, press "1" and then "0" when prompted.

# 26(a through i)

## Bayview Quick-Build Safety Projects: Williams Avenue

## PROPOSED CHANGES



### Travel Lane Reduction

Fewer travel lanes increase pedestrian safety and comfort when crossing the street. Reducing the number of travel lanes will also encourage driving at safer speeds, which reduces the risk of injury. Excess road space may be reallocated to angled parking spaces, painted medians, and painted buffers.



### Crosswalks Upgrades

Unmarked and traditional crosswalk markings can be upgraded to continental markings for greater visibility. A crosswalk can be raised to further help deter speeding.



### Transit Stop Changes

The existing flag stop on Williams Avenue at 3rd Street can be upgraded to a bus zone to enable passengers getting on and off the bus from the sidewalk. The flag stop on Van Dyke Avenue at 3rd Street can be removed to simplify the number of closely spaced stops.



### Speed Hump

Speed humps encourage drivers to travel at safe speeds. These are typically installed at midblock locations and are a form of traffic calming.



### Painted Safety Zones

Painted safety zones increase the visibility of pedestrians at crossings by keeping the corners of intersections clear. They also encourage drivers to turn at safer speeds and at a further distance away from people walking.



### Daylighting

Red zones painted at the corner of intersections help keep the area clear so that pedestrians waiting to cross the road are visible to all.



! Please let us know what you think! Email us at [BayviewQB@sfmta.com](mailto:BayviewQB@sfmta.com)

For more information about this and other Bayview Quick-Build Safety Projects, we invite you to visit: [www.sfmta.com/BayviewQuickBuild](http://www.sfmta.com/BayviewQuickBuild)

311 Free language assistance / 免費語言協助 / Ayuda gratis con el idioma / Бесплатная помощь переводчиков / Libreng tulong para sa wikang Tagalog / Trợ giúp Thông dịch Miễn phí / Assistance linguistique gratuite / 無料の言語支援 / 무료 언어 지원 / การช่วยเหลือทาง ด้านภาษาโดยไม่มีค่าใช้จ่าย / خط المساعدة المجاني على الرقم

Conference Line: **1-888-398-2342** (use participation code: 8647385)

To comment on an item, press "1" and then "0" when prompted.

# Public Hearing Decision Posting

Results will be posted by  
5 PM next Friday

<https://www.sfmta.com/calendar/engineering-public-hearing-meeting-july-30-2021>

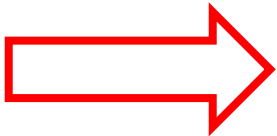
## Referenced Materials

Engineering Public Hearing Agenda, July 17, 2020

 [Engineering Public Hearing Agenda, July 17, 2020](#)

Engineering Public Hearing Results, July 17, 2020

 [Engineering Public Hearing Results, July 17, 2020](#)





SFMTA

# Next Engineering Public Hearing August 13, 2021

<https://sfmta.com/enghearing>

Conference Line: 888-398-2342

Participation Code: 8647385#