



SFMTA

April 16, 2021

Engineering Public Hearing

[SFMTA.com/ENGHearing](https://www.sfmta.com/ENGHearing)

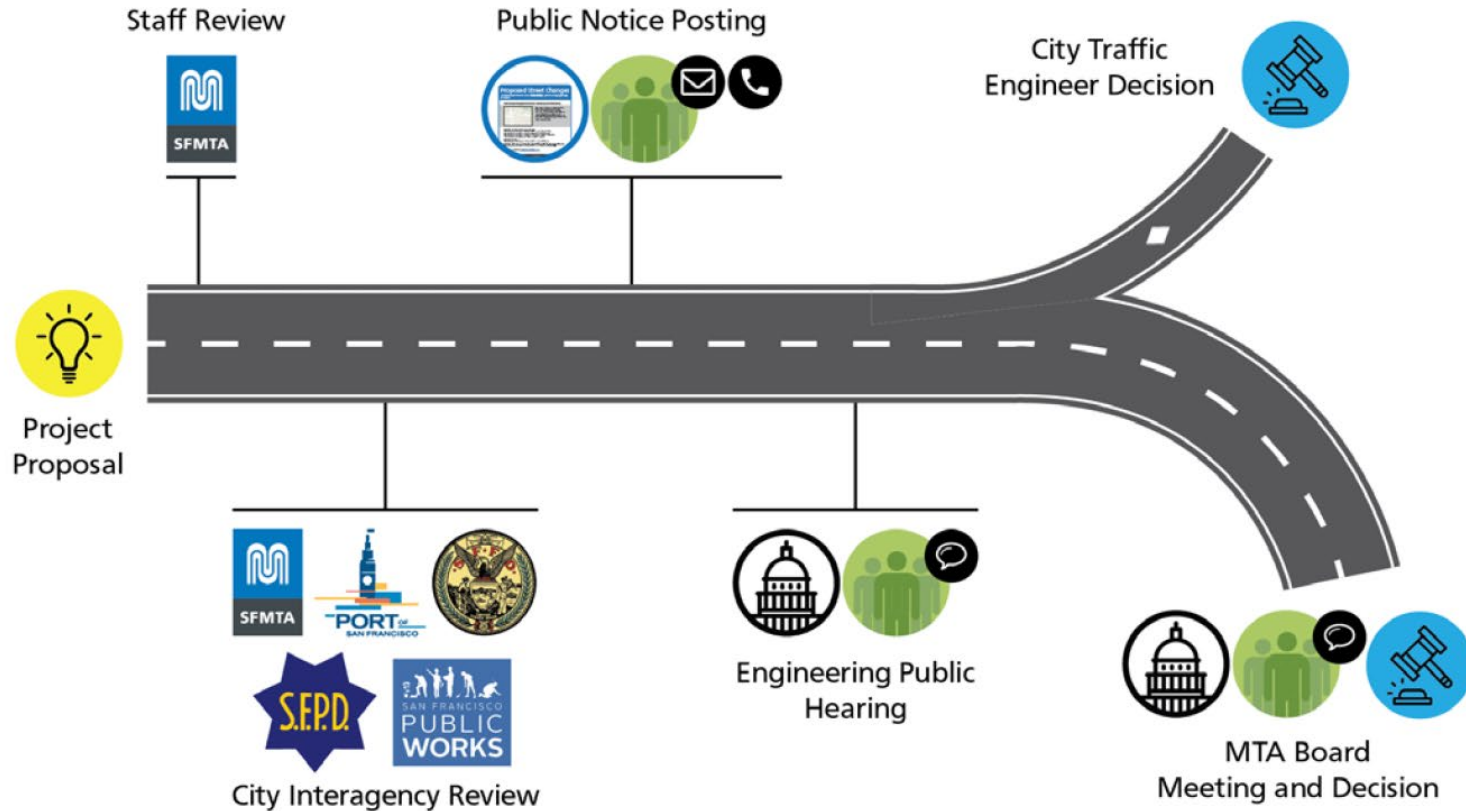
Conference Line: 888-398-2342

Participation Code: 8647385

[SFMTA.com/ENGSpeakerCard](https://www.sfmta.com/ENGSpeakerCard)

Proposed Street Changes

How does a proposed street change get approved?



<https://www.sfmta.com/committees/engineering-public-hearings>

Public Hearing Decision Posting

Results will be posted by
5 PM next Friday

<https://www.sfmta.com/calendar/engineering-public-hearing-meeting-april-16-2021>

Referenced Materials

Engineering Public Hearing Agenda, July 17, 2020

 [Engineering Public Hearing Agenda, July 17, 2020](#)

Engineering Public Hearing Results, July 17, 2020

 [Engineering Public Hearing Results, July 17, 2020](#)





SFMTA

April 16, 2021

Engineering Public Hearing

[SFMTA.com/ENGHearing](https://www.sfmta.com/ENGHearing)

Conference Line: 888-398-2342

Participation Code: 8647385

[SFMTA.com/ENGSpeakerCard](https://www.sfmta.com/ENGSpeakerCard)

1. ESTABLISH – STOP SIGNS

44th Avenue, northbound and southbound, at Pacheco Street, making this intersection an all-way STOP (Approvable by the City Traffic Engineer) (Supervisor District 4) Jeffrey Tom, jeffrey.tom@sfmta.com



Conference Line: **1-888-398-2342** (use participation code: 8647385)

To comment on an item, press "1" and then "0" when prompted.

2. ESTABLISH – TOW-AWAY, NO STOPPING ANYTIME

Northridge Road, south side, from Harbor Road west property line to 95 feet easterly (in between the perpendicular parking bays on Northridge Road at Harbor Road) (Requires approval of the SFMTA Board) (Supervisor District 10) Hester Yu, hester.yu@sfmta.com



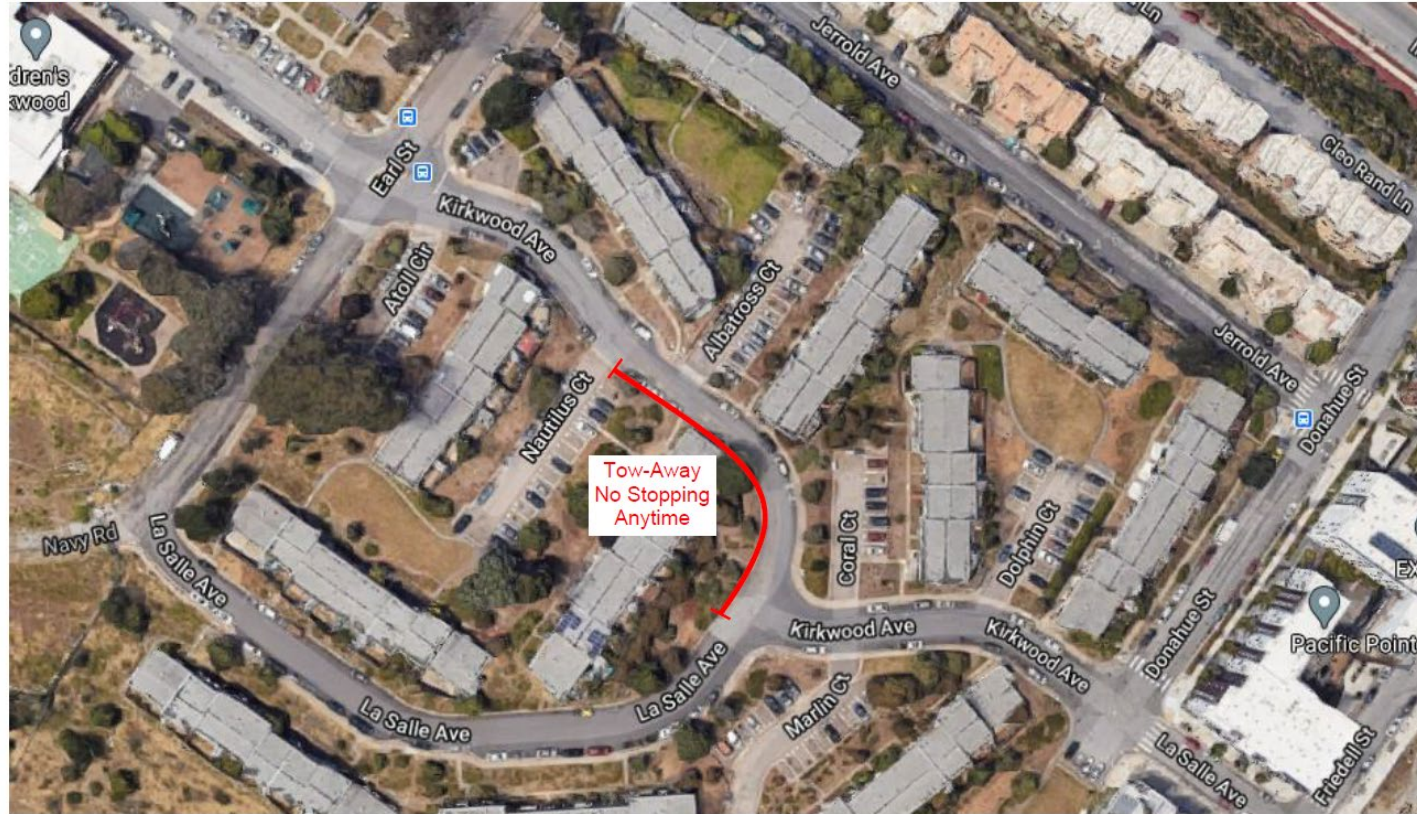
Conference Line: **1-888-398-2342** (use participation code: 8647385)

To comment on an item, press "1" and then "0" when prompted.

3. ESTABLISH – TOW-AWAY, NO STOPPING ANYTIME

Kirkwood Avenue, south side, from La Salle Avenue to Nautilus Court (Requires approval of the SFMTA Board) (Supervisor District 10) Hester Yu. hester.vu@sfmta.com

Proposal



Conference Line: **1-888-398-2342** (use participation code: 8647385)

To comment on an item, press "1" and then "0" when prompted.

4. ESTABLISH - CLASS 2 BIKE LANE

Geneva Avenue, both directions, between Prague Street and Brookdale Avenue (Supervisor District 10 & 11) (Requires approval of the SFMTA Board)

Dusson Yeung, dusson.yeung@sfmta.com



Conference Line: **1-888-398-2342** (use participation code: 8647385)

To comment on an item, press "1" and then "0" when prompted.

5. ESTABLISH – TOW-AWAY, NO PARKING ANYTIME

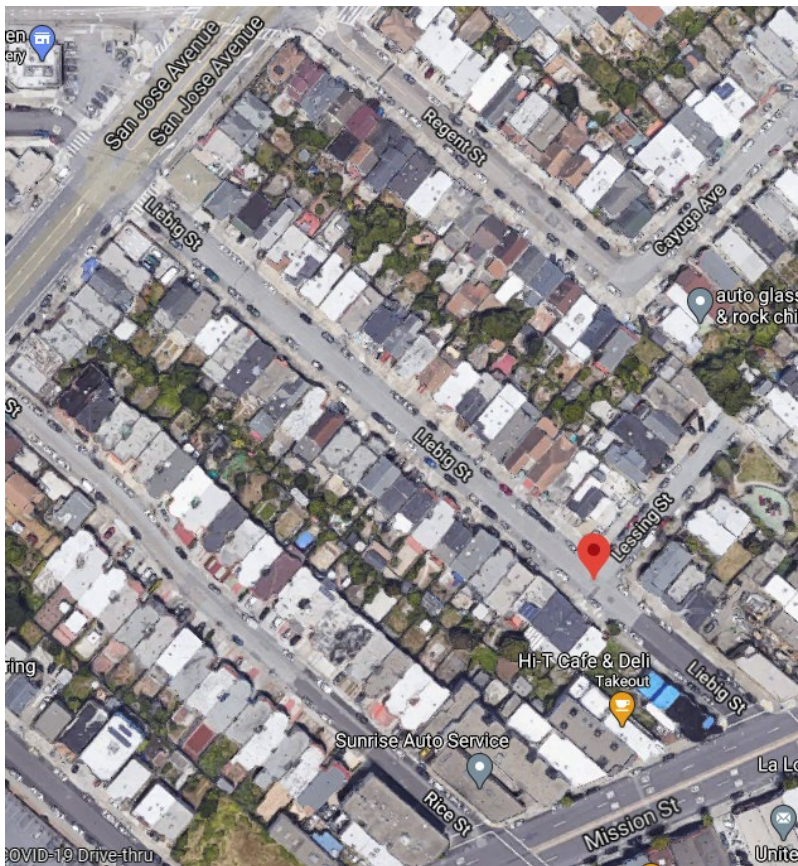
Kimball Place, west side, from 64 feet to 86 feet south of Sacramento Street (Requires approval of the SFMTA Board) (Supervisor District 3) Tom Folks, tom.folks@sfmta.com



Conference Line: **1-888-398-2342** (use participation code: 8647385)

To comment on an item, press "1" and then "0" when prompted.

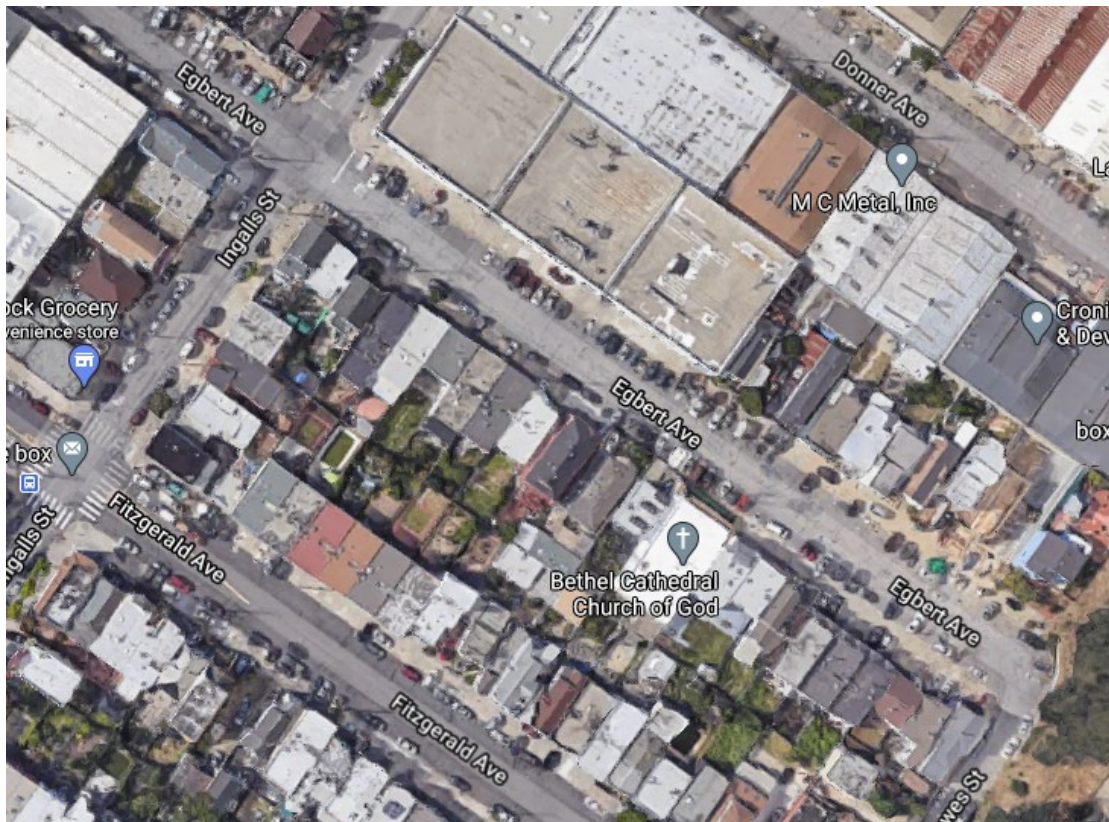
**6. ESTABLISH – TOUR BUS (MORE THAN 8 PASSENGERS) RESTRICTION
Liebig Street, between San Jose Avenue and Mission Street (Requires approval of the SFMTA Board)
(Supervisor District 11) Tom Folks, tom.folks@sfmta.com**



Conference Line: **1-888-398-2342** (use participation code: 8647385)

To comment on an item, press "1" and then "0" when prompted.

7. ESTABLISH – 4-HOUR TIME LIMIT, 8 AM TO 6 PM, MONDAY THROUGH FRIDAY
Egbert Avenue, north side, from Ingalls Street to 300 feet southerly (Supervisor District 10) (Requires approval of the SFMTA Board) Andy Thornley, andy.thornley@sfmta.com



Conference Line: **1-888-398-2342** (use participation code: 8647385)

To comment on an item, press "1" and then "0" when prompted.

8(a). RESCIND – TOW-AWAY, NO STOPPING EXCEPT PERMITTED CAR SHARE
Post Street, north side, from Franklin Street to 22 feet westerly (Requires approval of the SFMTA Board)

8(b). ESTABLISH – RED ZONE
Post Street, north side, from Franklin Street to 22 feet westerly (Requires approval of the SFMTA Board)

8(c). ESTABLISH – TOW-AWAY, NO STOPPING EXCEPT PERMITTED CAR SHARE
Post Street, north side, from Franklin Street, 43 feet to 64 feet westerly (removes Post ID #614-13060)
(Requires approval of the SFMTA Board) (Supervisor District 2) Andy Thornley, andy.thornley@sfmta.com



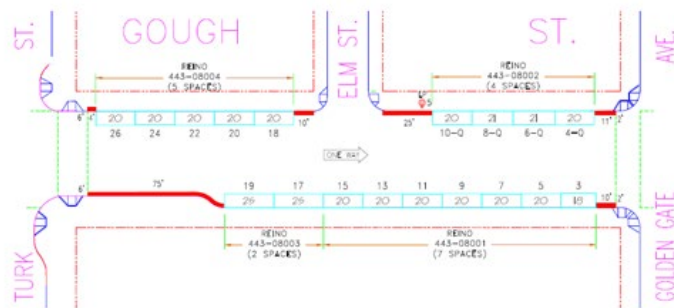
Conference Line: **1-888-398-2342** (use participation code: 8647385)

To comment on an item, press "1" and then "0" when prompted.

9(a). RESCIND - GREEN METERED PARKING SPACE (15 MIN LIMIT 9AM-6PM, MON-SAT)
Gough Street, east side, from 13 feet to 33 feet north of Golden Gate Avenue (meter space #4-Q).
(Approvable by the City Traffic Engineer)

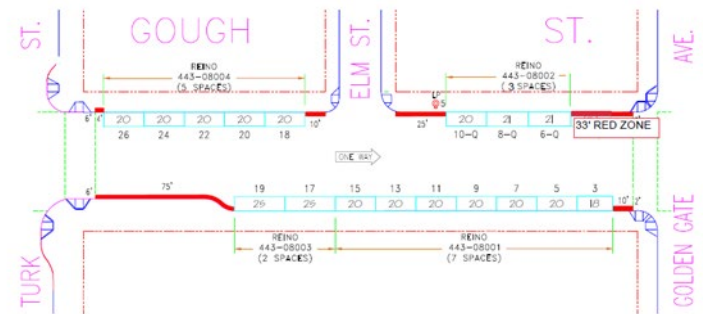
9(c). ESTABLISH - RED ZONES
Gough Street, east side, from 13 feet to 33 feet north of Golden Gate Avenue. (Approvable by the City Traffic Engineer) (Supervisor District 5) Shahram Shariati, Shahram.Shariati@sfmta.com

METER DRAWING



EXISTING CONDITIONS

METER DRAWING



PROPOSED CONDITIONS

Conference Line: **1-888-398-2342** (use participation code: 8647385)

To comment on an item, press "1" and then "0" when prompted.

9(b). RESCIND - WHITE ZONE, PASSENGER LOADING (DURING POSTED SERVICES)
Laguna Street, west side, from Sutter Street to 20 feet north. (Approvable by the City Traffic Engineer)

9(c). ESTABLISH - RED ZONES
Laguna Street, west side, from Sutter Street to 20 feet north. (Approvable by the City Traffic Engineer)

9(d). ESTABLISH - WHITE ZONE, PASSENGER LOADING (DURING POSTED SERVICES)
Laguna Street, west side, from 52 feet to 86 feet north of Sutter Street (replaces the white curb that was lost to the new red zone and extends it by 14 feet). (Approvable by the City Traffic Engineer) (Supervisor District 5) Shahram Shariati, Shahram.Shariati@sfmta.com



Street View - Laguna/Sutter
Existing Conditions

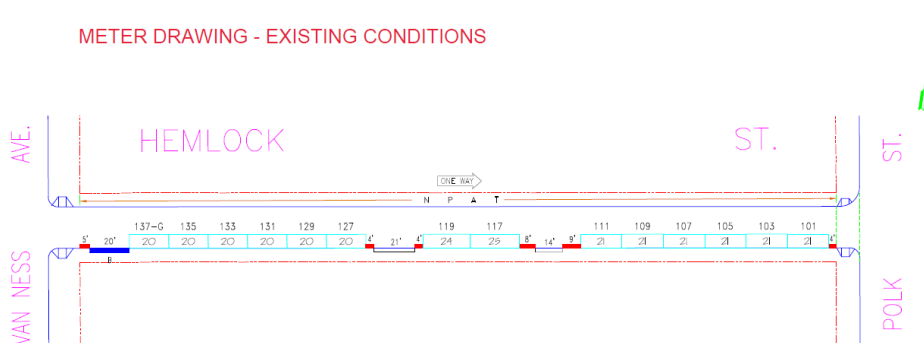
Conference Line: **1-888-398-2342** (use participation code: 8647385)

To comment on an item, press "1" and then "0" when prompted.

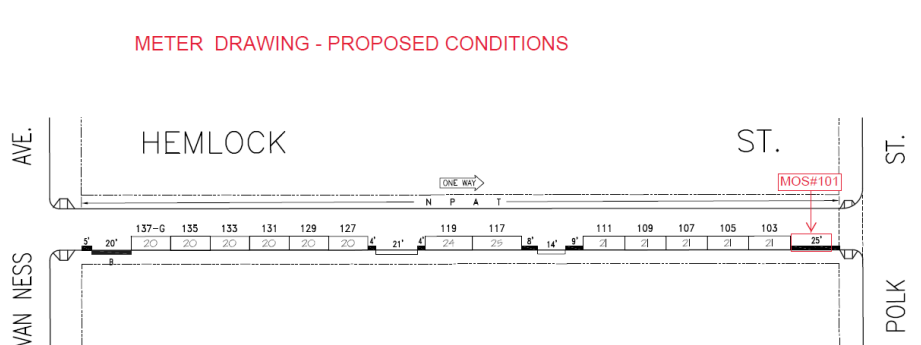
10(a).RESCIND - GENERAL METERED PARKING (9AM TO 6PM, MONDAY THROUGH SATURDAY)
10(g).ESTABLISH - RED ZONES

Hemlock Street, south side, from 4 feet to 25 feet west of Polk Street (meter space #101). (Requires approval of the SFMTA Board) (Supervisor Districts 3 & 6) Shahram Shariati, Shahram.Shariati@sfmta.com

METER DRAWING - EXISTING CONDITIONS



METER DRAWING - PROPOSED CONDITIONS



Conference Line: **1-888-398-2342** (use participation code: 8647385)

To comment on an item, press "1" and then "0" when prompted.

10(a).RESCIND - GENERAL METERED PARKING (9AM TO 6PM, MONDAY THROUGH SATURDAY)

10(g).ESTABLISH - RED ZONES

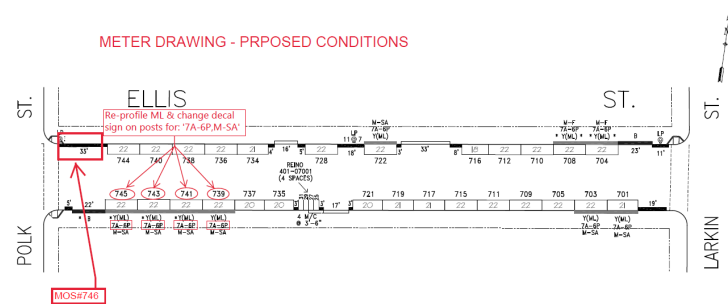
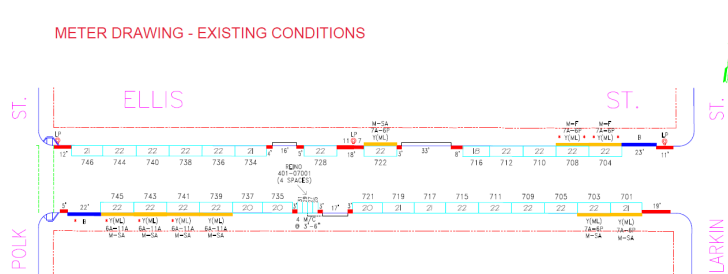
Ellis Street, north side, from 12 feet to 33 feet east of Polk Street (meter space #746). (Requires approval of the SFMTA Board)

10(e).RESCIND - YELLOW METERED LOADING ZONE (30 MINUTE LIMIT 6AM TO 11AM, MONDAY THROUGH SATURDAY)

Ellis Street, south side, from 27 feet to 115 feet east of Polk Street (meter space #745, 743, 741 & 739). (Approvable by the City Traffic Engineer)

10(i). ESTABLISH - YELLOW METERED LOADING ZONE (30 MINUTE LIMIT 7AM TO 6PM, MONDAY THROUGH SATURDAY)

C. Ellis Street, south side, from 27 feet to 115 feet east of Polk Street (meter space #745, 743, 741 & 739). (Approvable by the City Traffic Engineer) (Supervisor Districts 3 & 6) Shahram Shariati, Shahram.Shariati@sfmta.com



Conference Line: **1-888-398-2342** (use participation code: 8647385)
To comment on an item, press "1" and then "0" when prompted.

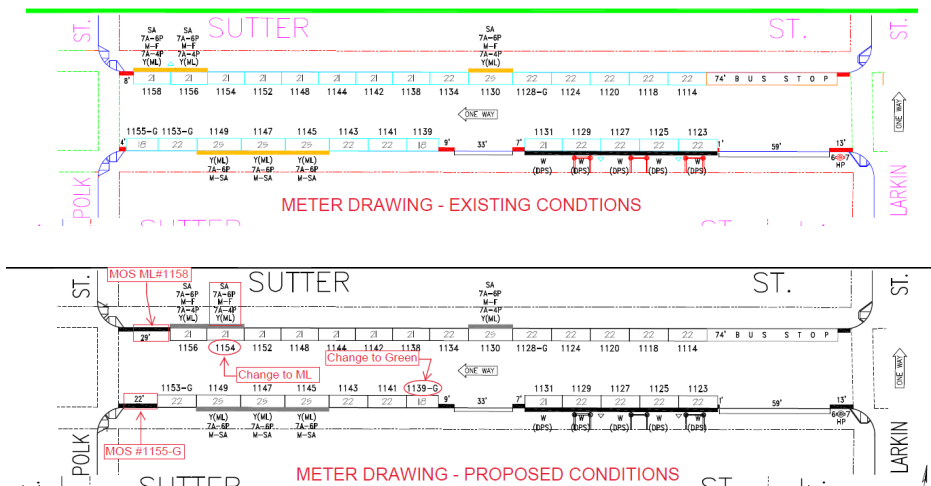
10(b). RESCIND - YELLOW METERED LOADING ZONE (30 MINUTE LIMIT 7AM TO 6PM, SATURDAY & 7AM TO 4PM, MONDAY THROUGH FRIDAY)
10(g). ESTABLISH - RED ZONES
Sutter Street, north side, from 8 feet to 29 feet east of Polk Street (meter space #1158). (Requires SFMTA Board approval)

10(g). ESTABLISH - RED ZONES
Sutter Street, south side, from 4 feet to 22 feet east of Polk Street (Approvable by the City Traffic Engineer)

10(h). ESTABLISH - YELLOW METERED LOADING ZONE (30 MINUTE LIMIT 7AM TO 6PM, SATURDAY & 7AM TO 4PM, MONDAY THROUGH FRIDAY)
Sutter Street, north side, from 50 feet to 71 feet east of Polk Street (converts general meter space #1154 into a yellow metered space). (Approvable by the City Traffic Engineer)

10(f). RESCIND - GREEN METERED PARKING SPACE (30 MINUTE LIMIT 9AM TO 6PM, MONDAY THROUGH SATURDAY)
Sutter Street, south side, from 4 feet to 22 feet east of Polk Street (meter space #1155-G). (Approvable by the City Traffic Engineer)

10(j). ESTABLISH - GREEN METERED PARKING SPACE (30 MINUTE LIMIT 9AM TO 6PM, MONDAY THROUGH SATURDAY)
Sutter Street, south side, from 163 feet to 181 feet east of Polk Street (converts general meter space #1139 into a green metered space). (Supervisor Districts 3 & 6) Shahram Shariati, Shahram.Shariati@sfmta.com



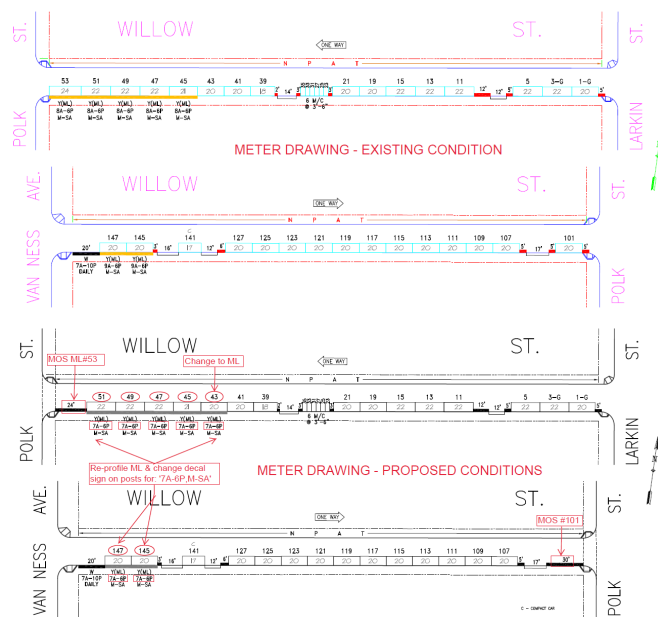
Conference Line: **1-888-398-2342** (use participation code: 8647385)
To comment on an item, press "1" and then "0" when prompted.

10(c).RESCIND - YELLOW METERED LOADING ZONE (30 MINUTE LIMIT 8AM TO 6PM, MONDAY THROUGH SATURDAY)
Willow Street, south side, from Polk Street to 111 feet east (meter space #53, 51, 49, 47 & 45). (Approvable by the City Traffic Engineer)

10(d).RESCIND - YELLOW METERED LOADING ZONE (30 MINUTE LIMIT 9AM TO 6PM, MONDAY THROUGH SATURDAY)
Willow Street, south side, from 20 feet to 60 feet east of Van Ness Avenue (meter space #147 & 145). (Approvable by the City Traffic Engineer)

10(g).ESTABLISH - RED ZONES
Willow Street, south side, from Polk Street to 24 feet east. (Requires approval of the SFMTA Board)

10(i). ESTABLISH - YELLOW METERED LOADING ZONE (30 MINUTE LIMIT 7AM TO 6PM, MONDAY THROUGH SATURDAY)
A. Willow Street, south side, from 24 feet to 131 feet east of Polk Street (meter space #51, 49, 47 & 45. Converts general meter parking space #43 into a yellow metered space). (Approvable by the City Traffic Engineer)
B. Willow Street, south side, from 20 feet to 60 feet east of Van Ness Avenue (meter space #147 & 145). (Approvable by the City Traffic Engineer)
(Supervisor Districts 3 & 6) Shahram Shariati, Shahram.Shariati@sfmta.com



Conference Line: **1-888-398-2342** (use participation code: 8647385)

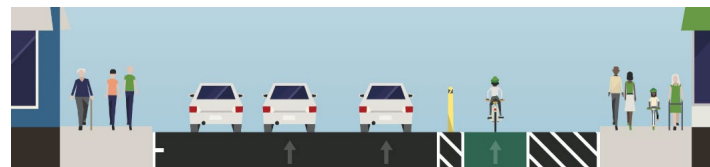
To comment on an item, press "1" and then "0" when prompted.

11. Leavenworth Street Pedestrian Safety Quick-Build Project (Approvable by the City Traffic Engineer) (Supervisor Districts 6 and 3) Daniel Carr, daniel.carr@sfmta.com

12. Golden Gate Avenue, between Polk Street and Market Street Quick-Build Project (Approvable by the City Traffic Engineer) (Supervisor District 6) Winnie Lee, winnie.lee@sfmta.com



PROPOSED STREET CROSS-SECTIONS ON LEAVENWORTH



PROPOSED STREET CROSS-SECTIONS ON GOLDEN GATE AVE

Conference Line: **1-888-398-2342** (use participation code: 8647385)

To comment on an item, press "1" and then "0" when prompted.

Public Hearing Decision Posting

Results will be posted by
5 PM next Friday

<https://www.sfmta.com/calendar/engineering-public-hearing-meeting-april-16-2021>

Referenced Materials

Engineering Public Hearing Agenda, July 17, 2020

 [Engineering Public Hearing Agenda, July 17, 2020](#)

Engineering Public Hearing Results, July 17, 2020

 [Engineering Public Hearing Results, July 17, 2020](#)

