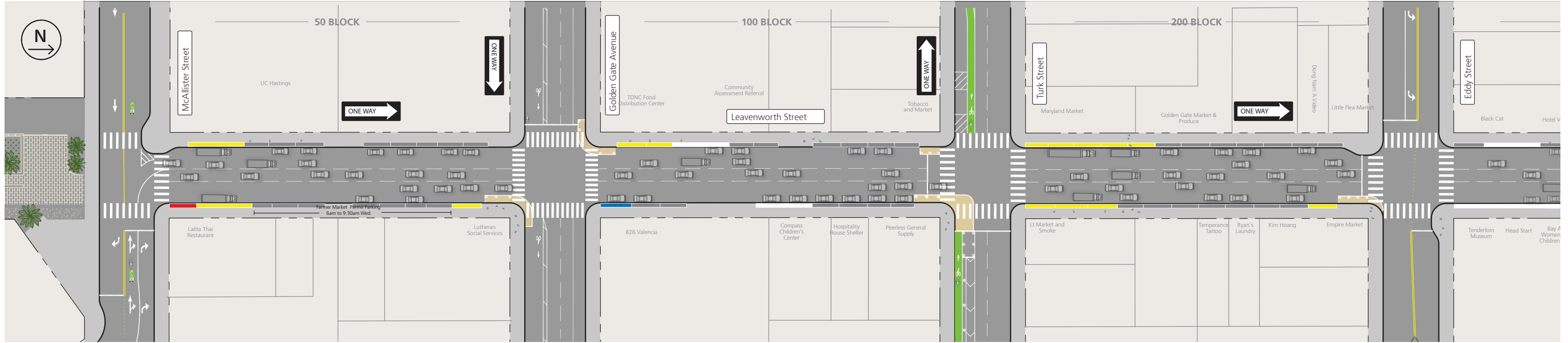
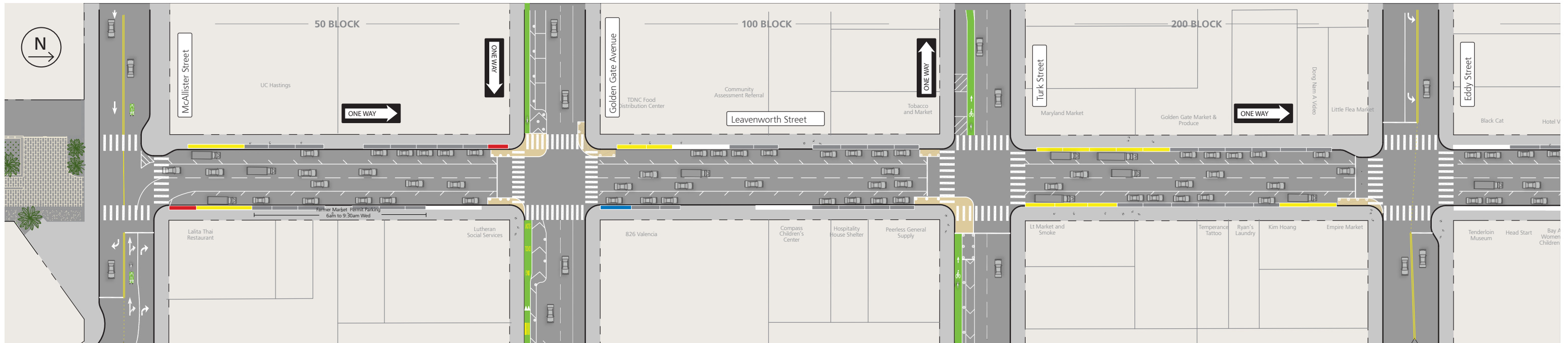


Leavenworth Quick-Build Project - Existing and Proposed Design (for illustrative purposes only)






Leavenworth Street - McAllister to Eddy Streets - EXISTING CONDITIONS



Leavenworth Street - McAllister to Eddy Streets - PROPOSED CONDITIONS

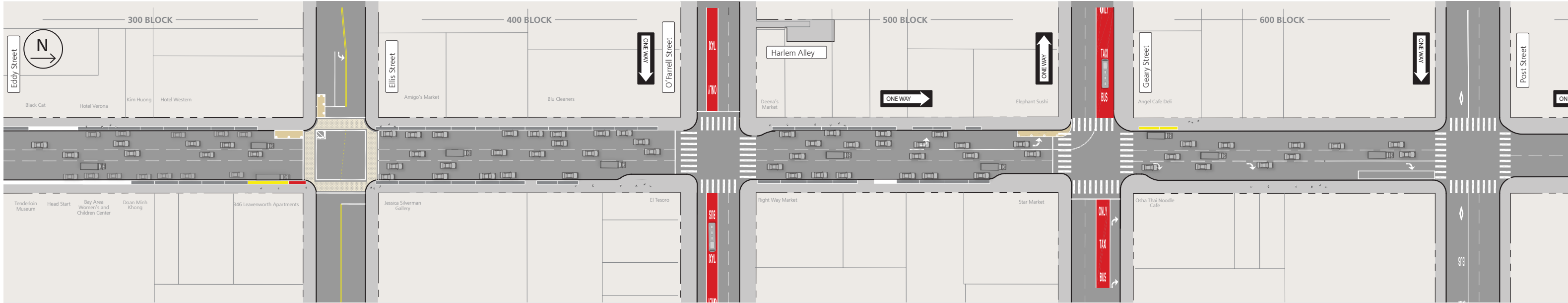


CURB COLORS

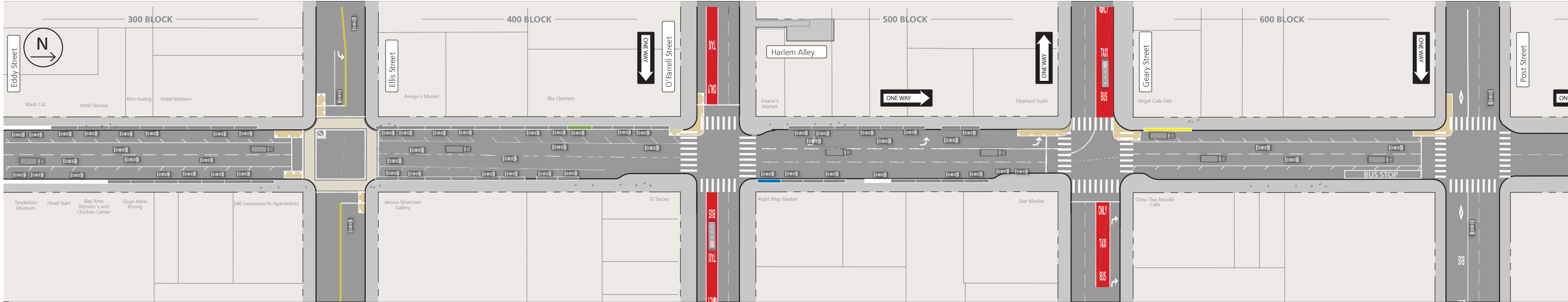
- | | | | | |
|---|--|---|---|--|
| <p> General Meter Parking</p> | <p> Accessible Parking</p> <ul style="list-style-type: none"> • Parking for people with disabled placards only | <p> Short-Term Meter Parking</p> <ul style="list-style-type: none"> • 10, 15 or 30 minute parking • Must pay parking meter | <p> Passenger Loading</p> <ul style="list-style-type: none"> • 5-minute passenger loading only • Driver must be in vehicle | <p> Commercial Loading</p> <ul style="list-style-type: none"> • 30-minute metered commercial loading • Up to 3-minute passenger loading |
|---|--|---|---|--|

Leavenworth Quick-Build Project - Existing and Proposed Design (for illustrative purposes only)

Leavenworth Street - Eddy to Post Streets - EXISTING CONDITIONS



Leavenworth Street - Eddy to Post Streets - PROPOSED CONDITIONS



CURB COLORS

- General Meter Parking
- Accessible Parking
 - Parking for people with disabled placards only
- Short-Term Meter Parking
 - 10, 15 or 30 minute parking
 - Must pay parking meter
- Passenger Loading
 - 5-minute passenger loading only
 - Driver must be in vehicle
- Commercial Loading
 - 30-minute metered commercial loading
 - Up to 3-minute passenger loading