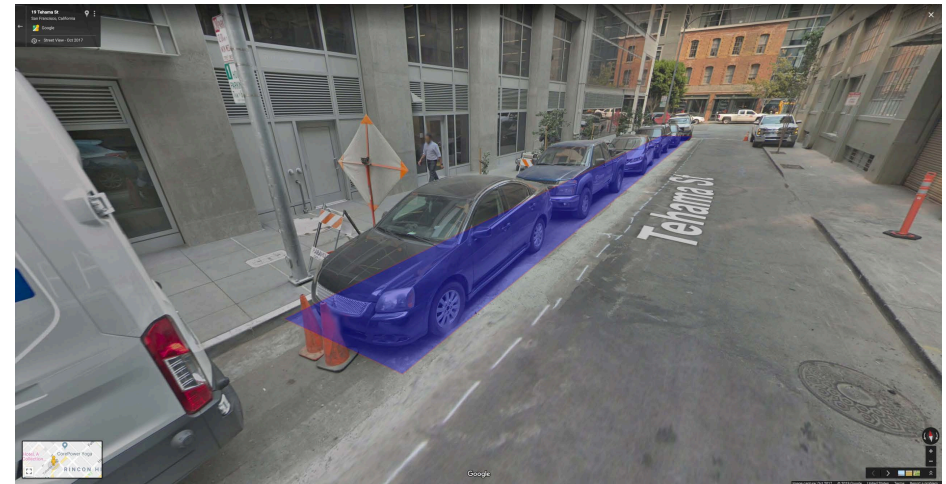
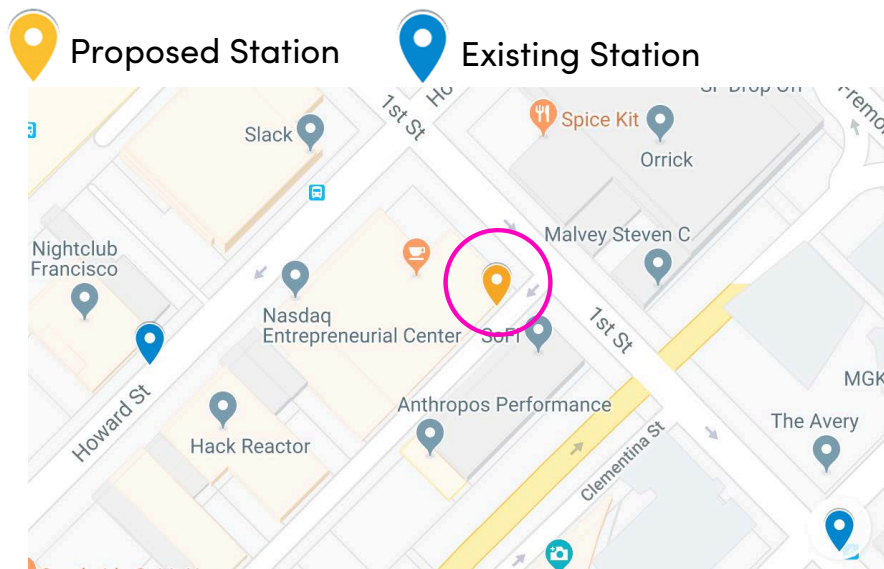


# Feedback Requested: Proposed Bikeshare Station

## About the Proposed Location

- On the north side of Tehama St, west of 1st St
- Docks for 39 bikes; 5 parking spaces converted
- Points of interest: Salesforce Transit Center, 1st St and Howard St business corridor
- Nearby bike routes: Howard St, Folsom St, Fremont St
- Fulfills the first/last mile gap to the Salesforce Transit Center



Please email us at [community@baywheels.com](mailto:community@baywheels.com) with your address and thoughts about the proposed station.

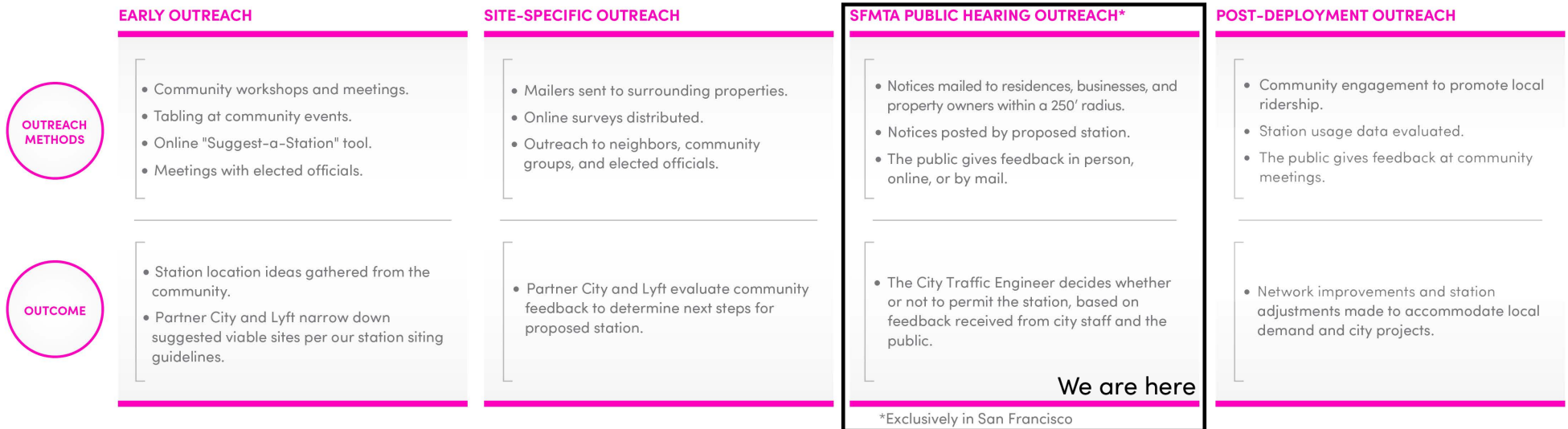
**baywheels**

# About Bay Wheels

Lyft is the owner of the Bay Wheels program. Bay Wheels is the Bay Area's largest bikeshare program, with stations across San Francisco, Berkeley, Oakland, Emeryville, and San Jose. Bikeshare is a fun, affordable way to get around. Bikes can be unlocked from one station and returned to any station in the network. Anyone over 18 can sign up and unlock a bike via the Lyft or Bay Wheels mobile app, the station kiosk, or a linked Clipper card.

Neighbors and community members recommend station locations online and at public meetings, workshops, and presentations. Our planning team also considers a variety of other factors, including station density, demand, access to bike lanes, sunlight, utilities, and more. Learn more at [baywheels.com](http://baywheels.com).

## Community Outreach Process



**Pricing:** **\$2** Single Ride  
Plus \$0.20/min for ebike trips

**\$15** Monthly Membership  
Plus \$0.15/min for ebike trips

**\$5** Bike Share for All Annual Membership\*  
Plus \$0.05/min for ebike trips

\*One-time \$5 Annual Membership (\$5/month in 2nd year) subject to eligibility. [baywheels.com/forall](http://baywheels.com/forall)

**baywheels**