



BAYVIEW

Community-Based Transportation Plan



METROPOLITAN
TRANSPORTATION
COMMISSION



San Francisco
County Transportation
Authority





"Bayview is a Food Desert. We need frequent and reliable transportation to get in and out of the neighborhood for daily needs."

- Winter 2019 workshop

"Projects should reflect community input. Changes without input can contribute to the perception that projects drive gentrification."

- Fall 2018 workshop

Executive Summary • PLAN PURPOSE

The Bayview district, one of San Francisco's traditionally African American neighborhoods, is culturally rich and resilient despite its isolation from the rest of San Francisco. Home to greater proportions of low-income residents, people of color, and immigrants than the city at-large, SFMTA recognizes that the members of the Bayview community are in need of a robust and diverse transportation network for access to economic and social opportunities— and are more vulnerable to the impacts of future development.

The Bayview Community Based Transportation Plan (Bayview CBTP) is a community-driven planning effort funded through a Caltrans Sustainable Planning Grant and an allocation from the Proposition K Transportation Sales Tax. The Bayview CBTP seeks to improve physical mobility in this historically underserved and isolated community by focusing on solutions to the needs of existing residents and businesses. Through this plan, we hope to foster a more collaborative and responsive relationship with the residents of the Bayview as well as develop accountability mechanisms to ensure continued community investment.

During a two-year open-ended planning process, SFMTA partnered with residents and community groups to identify transportation priorities which reflect community values and support a growing and resilient Bayview. This plan sought to bring past, ongoing, and future infrastructure efforts together to create a clear picture of community priorities, future demands on the transportation network, and city commitments.

Bringing together SFMTA technical expertise and the local knowledge of the community, the plan created a list of projects that emphasize walking, taking transit, and improving access for transit-dependent groups like seniors and residents of public housing. The Bayview CBTP includes a series of Quick Build projects to respond to needs now, a prioritized 5-year investment plan, and a series of projects funded through Participatory Budgeting.

PROJECT AREA • Executive Summary



The Bayview CBTP prioritizes projects that can deliver long-overdue improvements to safety and access for existing residents – especially those most vulnerable to changes in the transportation network.

THIS PLAN PROGRAMS MORE THAN \$3.63 MILLION IN TRANSPORTATION INVESTMENTS, ALL OF WHICH WERE IDENTIFIED, DEVELOPED, AND PRIORITIZED IN PARTNERSHIP WITH BAYVIEW RESIDENTS, BUSINESSES, AND ORGANIZATIONS.

QUICK BUILD PROJECTS - \$600,000



A suite of projects that can be delivered quickly and easily, some of these projects will be on the ground before the publication of this plan. This represents an immediate down payment on the SFMTA's commitment to the Bayview.

PARTICIPATORY BUDGETING PROJECTS - \$750,000



7 funded projects that were developed by residents and voted on in a public ballot in July 2019. In addition to the infrastructure projects on this map, these funds are going to pay for 3 new MTAP transit assistants to provide a greater safety presence on transit lines in the Bayview.

5-YEAR INVESTMENT PLAN - \$2,280,000



Out of 101 total projects identified during the Bayview CBTP outreach process, 53 projects are prioritized through the 5-year investment plan. These projects were developed to directly respond to resident need and residents prioritized which projects were selected.

THE VALUE OF ALL PROPOSED PROJECTS IN THIS PLAN IS \$8.63 MILLION



POLICY RECOMMENDATIONS • Executive Summary

Community needs in the Bayview extend well beyond what the Bayview CBTP can address or fund. Below are the most pressing transportation needs in the Bayview.

T Third Train Service: The T Third train is the primary transit link between Bayview and downtown, but its service is slow and unreliable. Service improvements on the T Third are a prerequisite for regaining the community's trust.

Oakdale Caltrain Station: Bayview residents miss the Paul Avenue Caltrain station, closed in 2005. Implementing a station plan for Oakdale Avenue could expand transit connections and options for Bayview residents.

Muni Bus Service: The Bayview is served by some of the most-delayed transit lines in San Francisco. For low-income residents living in geographically isolated areas of the Bayview served by 1-2 bus lines, reliable service is a critical need.

Parking: There are more cars than parking spaces in the Bayview. Many cars are parked on sidewalks or blocking crosswalks, creating hazards for seniors and residents with disabilities. Many residents feel like they must drive because transit services can't meet their needs. Any parking solution must include transit service improvements and enforcement must be non-punitive to avoid undue burdens on low-income residents.

Customer Service: When transit platforms or bus shelter fall into disrepair, and are not fixed over many months, it can make residents feel the City doesn't care about them or their transportation needs. Greater oversight and accountability are needed for the Clear Channel contract for platform and shelter maintenance. Perceptions that fare enforcement is targeted against certain groups, or that drivers mistreat resident, also erodes trust and confidence in government. Residents deserve to feel like Muni is meant for them.

Personal Safety: Improving access to transportation also means addressing personal safety risk in the Bayview. There need to be more non-policing efforts and investments to support personal safety, like more street lighting, MTAP (Muni Transit Assistant Program), and Community Ambassadors.

Community Shuttle: Bayview residents have keen interest in a community shuttle that can improve access to regional transit, community services and grocery stores. SFMTA will continue exploring funding opportunities and potential partnerships to meet Bayview's transportation needs.

Displacement & Jobs: Residents need to know and believe that they will still be around to benefit from transportation benefits once built. Using transportation to fight displacement means we must support local jobs through SFMTA's contracting and support for community-based organizations.

OUR PROMISE TO THE PUBLIC

Developed through dialogue with community leaders, peer agencies, and SFMTA stakeholders, the Bayview CBTP Statement of Intent documents our promise to the public. The Statement of Intent seeks to unify priorities, strategies, and actions to achieve results for the Bayview community.



ACCOUNTABILITY

A plan that is equitable and can have a measurable impact within the five years of adoption. It defines processes and partnerships needed to ensure the delivery of a final plan that is community-supported.



TRUST AND TRANSPARENCY

A plan that deepens connections between the Bayview Community and the SFMTA, through inclusive and equitable outreach, a transparent decision-making process, and clear communication of intended and unintended impacts of recommendations.



PRESERVE THE COMMUNITY'S VOICE

A plan that centers the Bayview community's lived experience and aspirations in the planning process and final plan recommendations. Transportation recommendations should be supported by residents and businesses as assets for the Bayview community to grow and flourish in place.

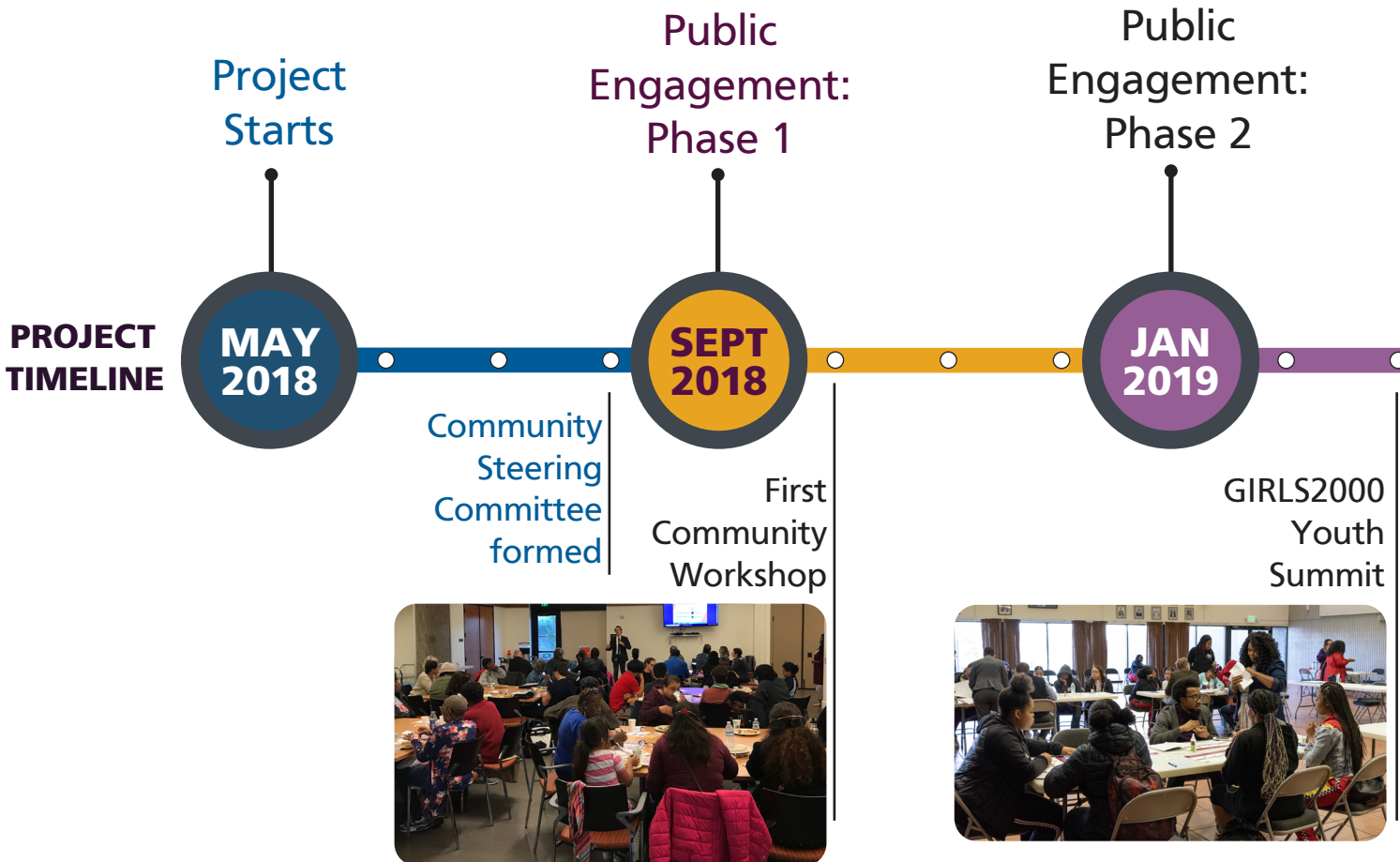
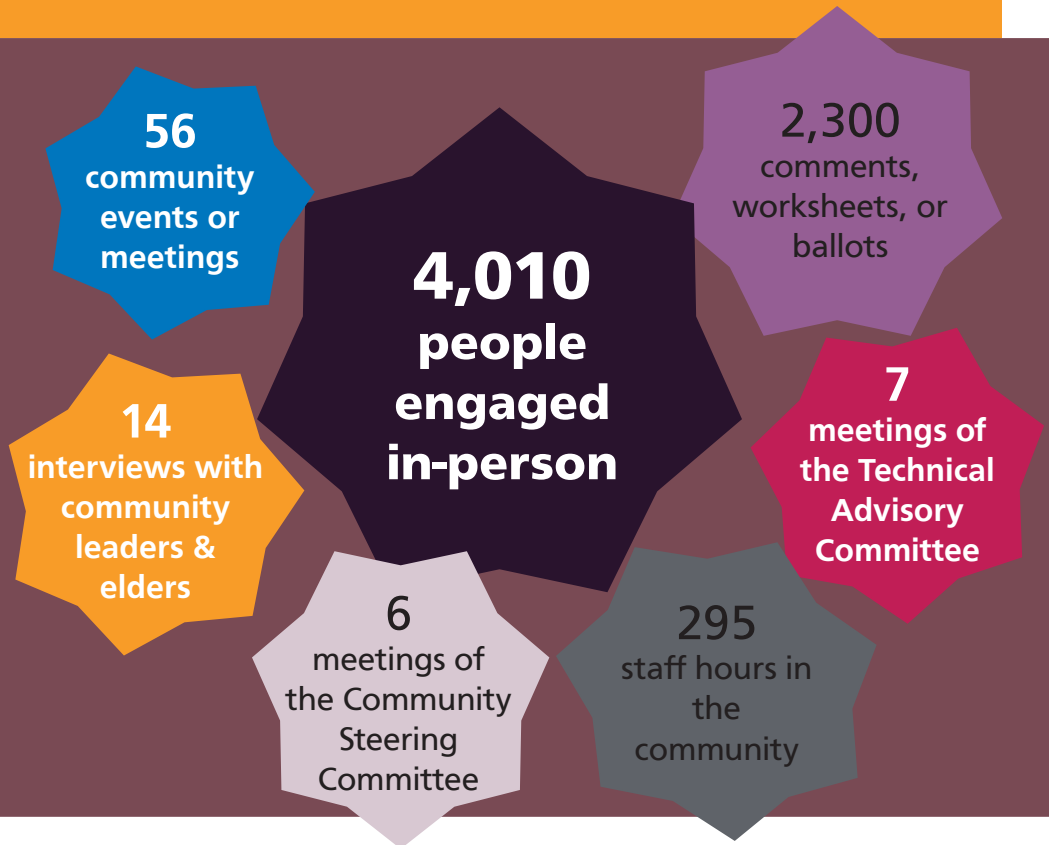


COORDINATION

A plan that establishes a framework for the SFMTA to tie intentions and commitments to direct actions. Internal SFMTA partnerships are essential to ensure a final transportation plan that is reflective of the Bayview community's needs and aligns with SFMTA's policies.

PROJECT SCHEDULE & OVERVIEW • Executive Summary

Over 13 months, we connected with Bayview residents, businesses, organizations, and community leaders. Building our outreach plan hand-in-hand with our Community Partners, our focus was "meeting the community where they're at", reducing barriers to participation wherever possible.



Executive Summary • NEXT STEPS

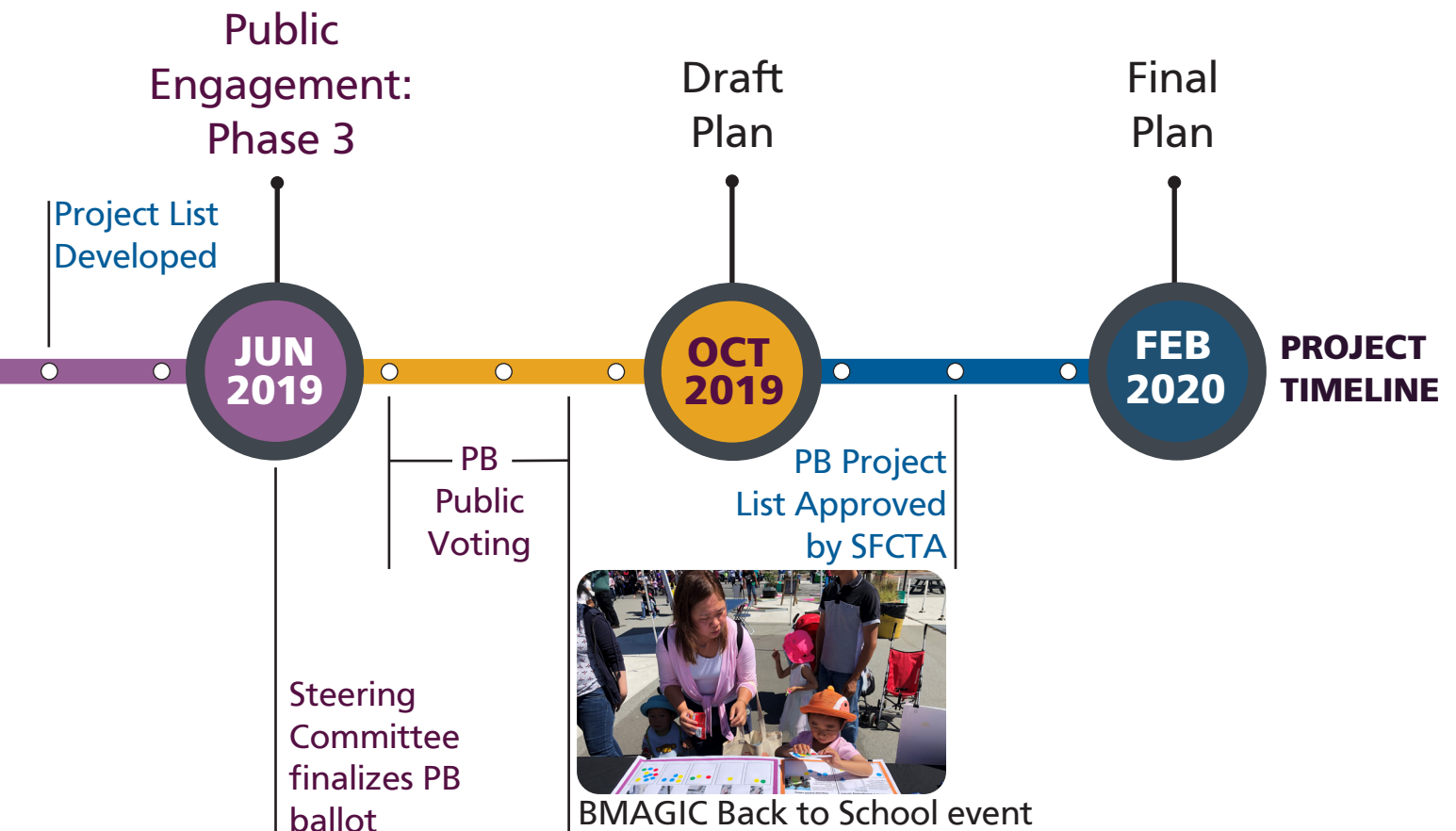
The Bayview CBTP is meant to be a living document, laying out transportation investments for the next 5 years and identifying outstanding needs for years to come.

QUICK BUILD projects should be completed before plan adoption in February 2020 or completed within the first six months of 2020.

PARTICIPATORY BUDGETING projects will be delivered within 3 years of the plan adoption.

5-YEAR INVESTMENT PLAN projects will be delivered by the SFMTA, in coordination with other city agencies like the Department of Public Works and the Public Utilities Commission. The SFMTA will continue community dialogue and outreach for the projects on the 5-year investment plan to ensure specific project details meet community needs.

CONTINUED ADVOCACY is needed to secure more project funding for the Bayview and ensure community priorities are being met. This plan acts as accountability document for future community advocacy.



Vision

Excellent transportation choices for San Francisco.

Mission

We connect San Francisco through a safe, equitable and sustainable transportation system.

More Information:

[SFMTA.com/projects/bayview-community-based-transportation-plan](https://sfmta.com/projects/bayview-community-based-transportation-plan)



METROPOLITAN
TRANSPORTATION
COMMISSION



San Francisco
County Transportation
Authority

Stay in touch with the SFMTA and learn more about us.

SFMTA.com



@SFMTA_Muni



Facebook.com/SFMTA.Muni



Instagram.com/SFMTAPhoto

311 Free language assistance / 免費語言協助 / Ayuda gratis con el idioma / Бесплатная помощь переводчиков / Trợ giúp Thông dịch Miễn phí / Assistance linguistique gratuite / 無料の言語支援 / Libreng tulong para sa wikang Filipino / 무료 언어 지원 / การช่วยเหลือทางด้านภาษา โดยไม่เสียค่าใช้จ่าย / خط المساعدة المجاني على الرقم