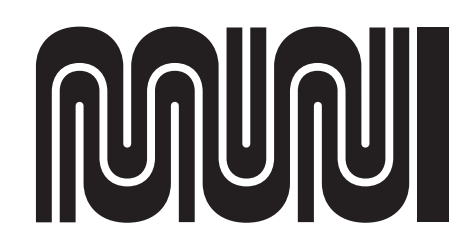
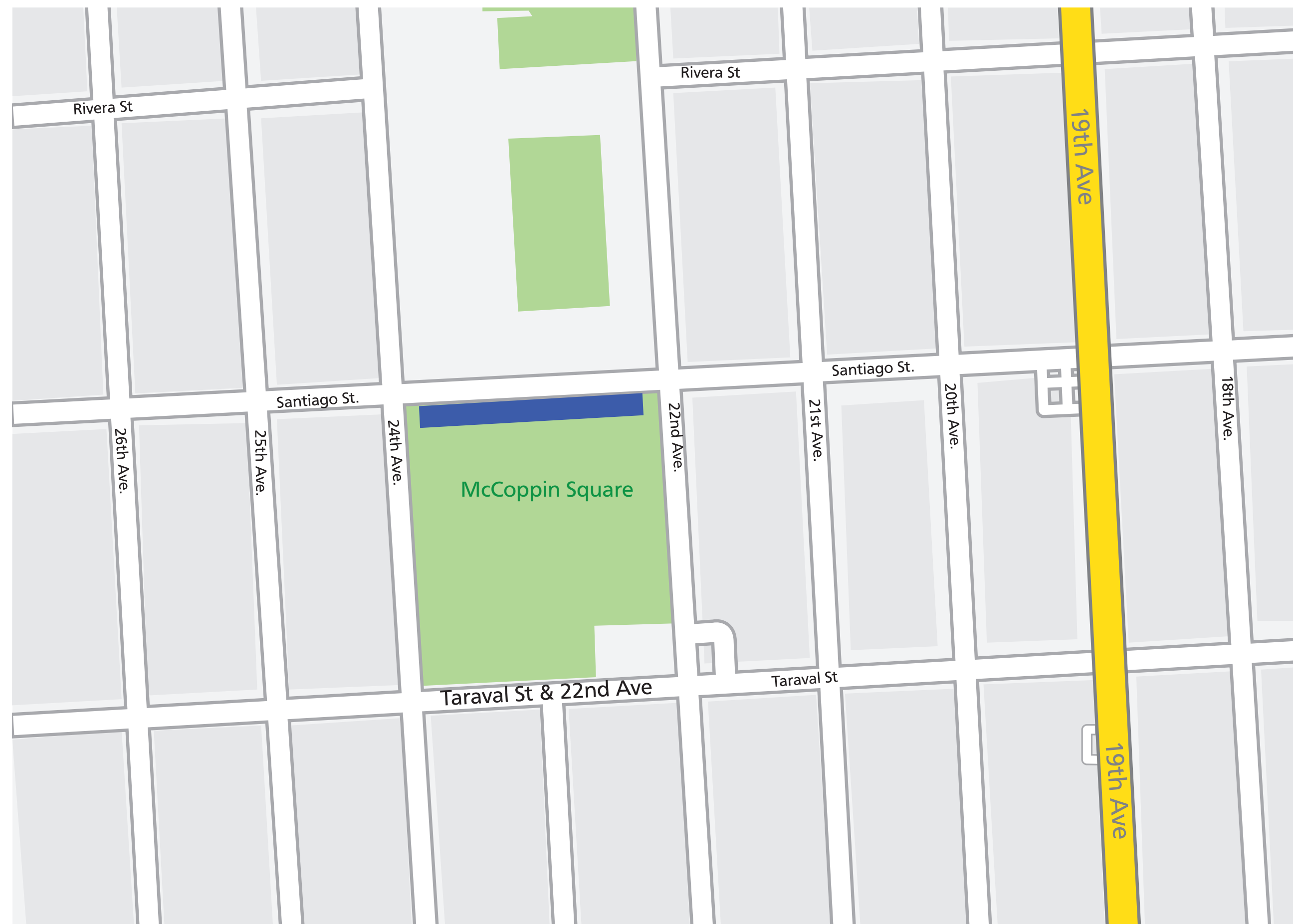


## Santiago Street between 22nd and 24th Avenue

- Location is adjacent to park
- Grade is ok for staging needs
- Length: 550 ft
- Parking Impact: 25 parking spaces





# 22nd Avenue and 24th Avenue Between Santiago Street and Rivera Street

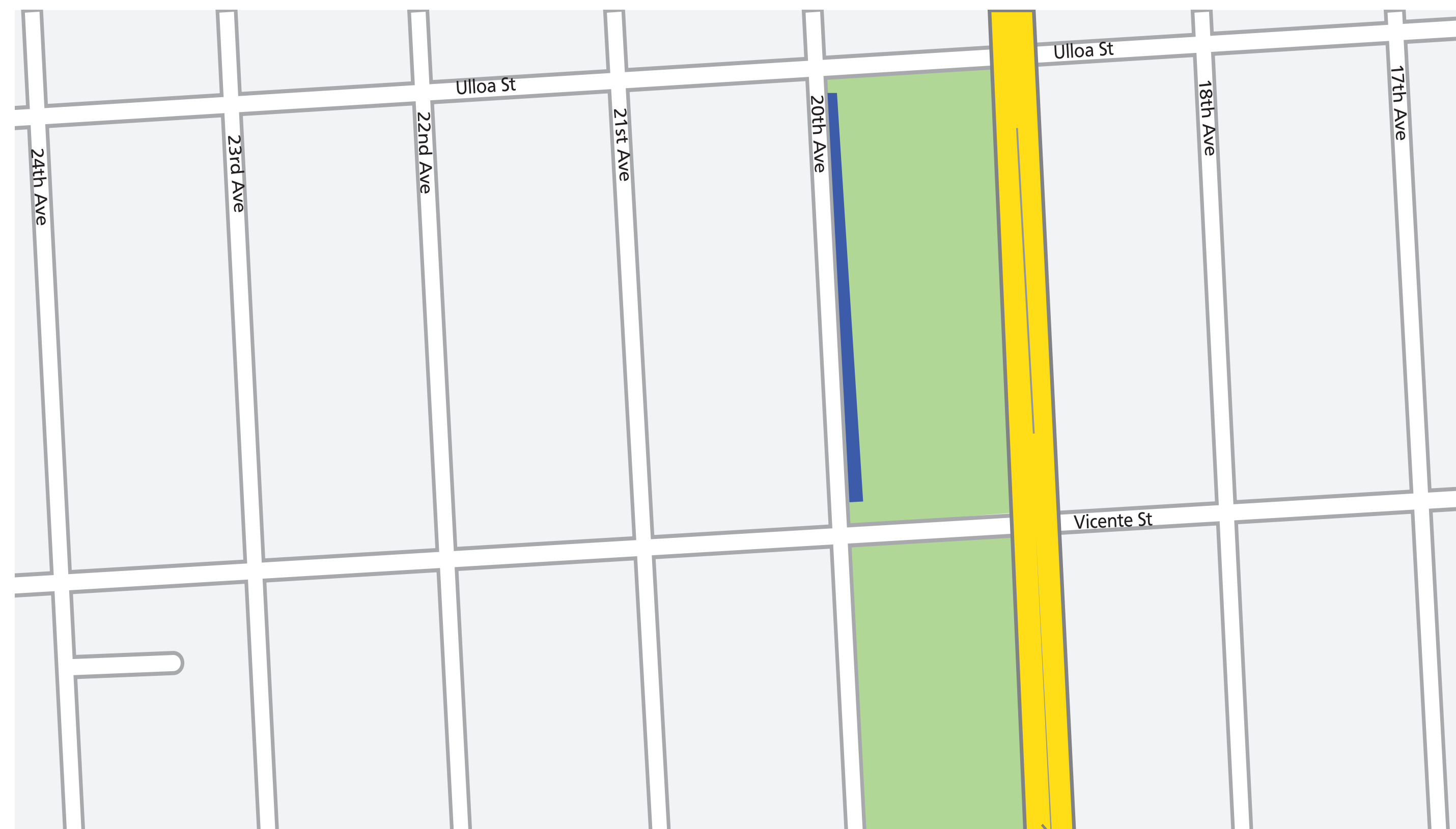
- Not viable locations
  - Steep grade not ideal for equipment/material storage
  - Across the street from Abraham Lincoln High School





## 20th Avenue Between Ulloa and Vicente Street

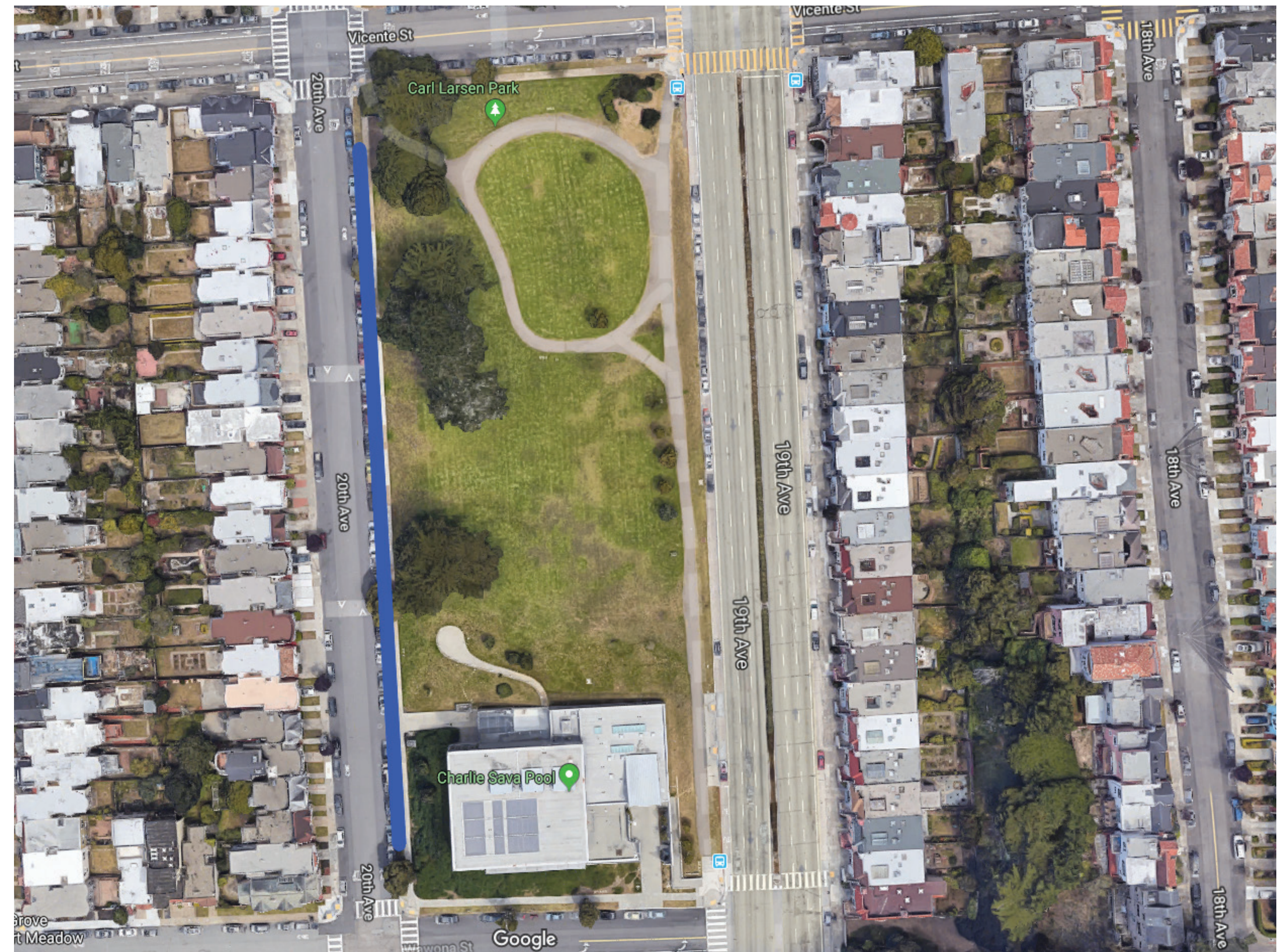
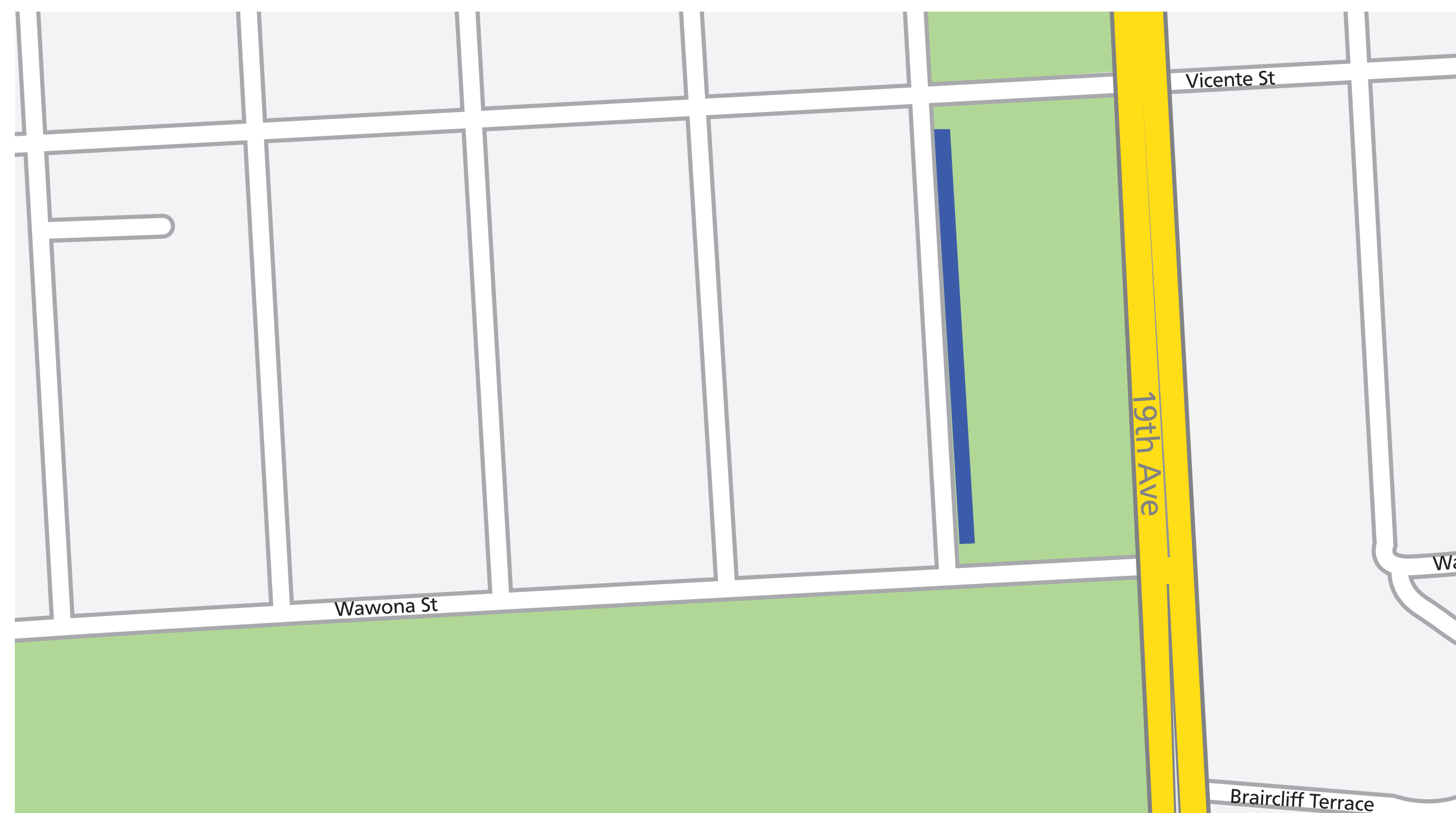
- East side only as it is adjacent to park
- Grade is ok for staging needs
- Length: 600 ft
- Parking impact: 27 parking spaces





## 20th Avenue Between Vicente and Wawona Street

- East side only as it is adjacent to park
- Grade is ok for staging needs
- Length: 600 ft
- Parking impact: 27 parking spaces





## Wawona Street Between 21st and 23rd Avenue

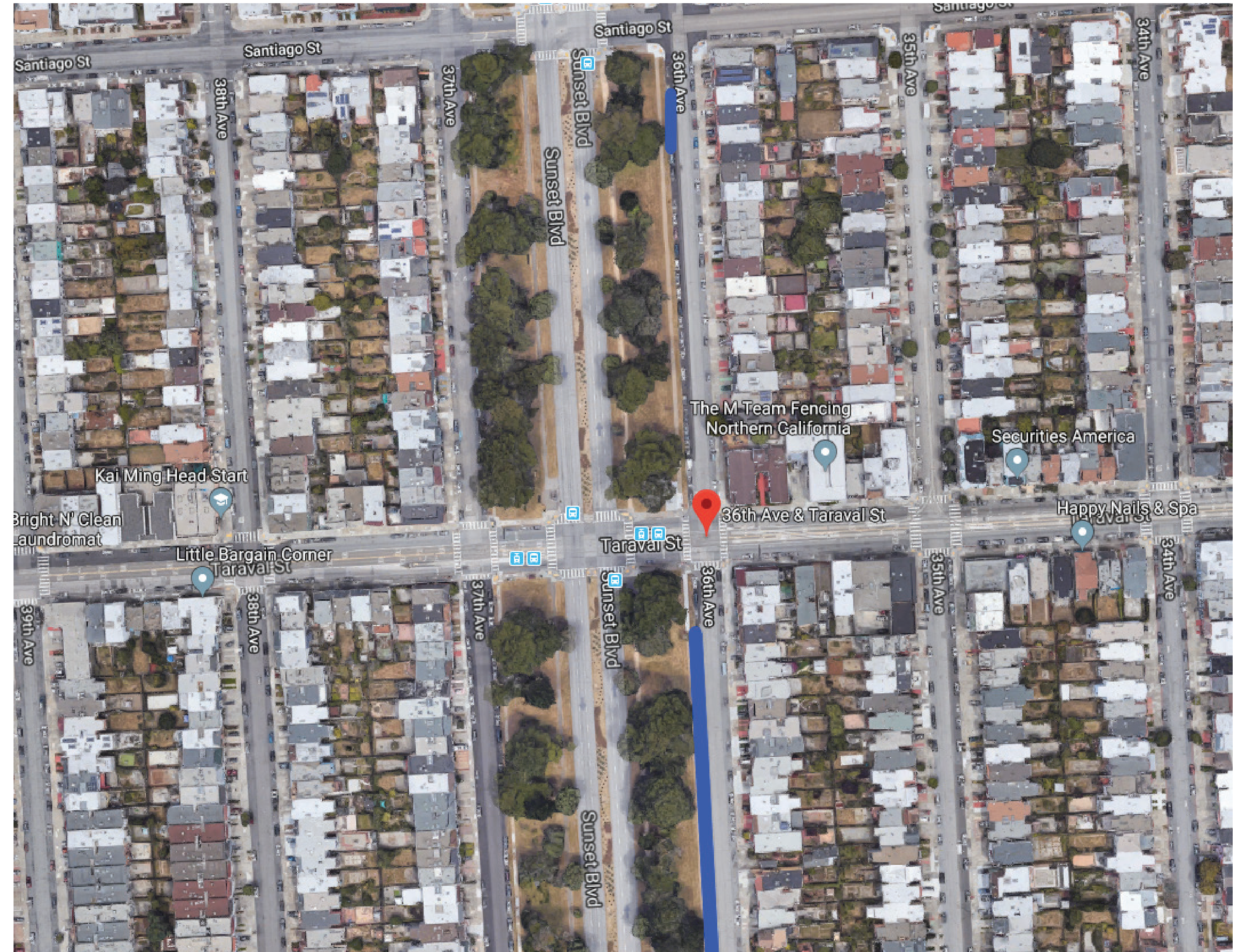
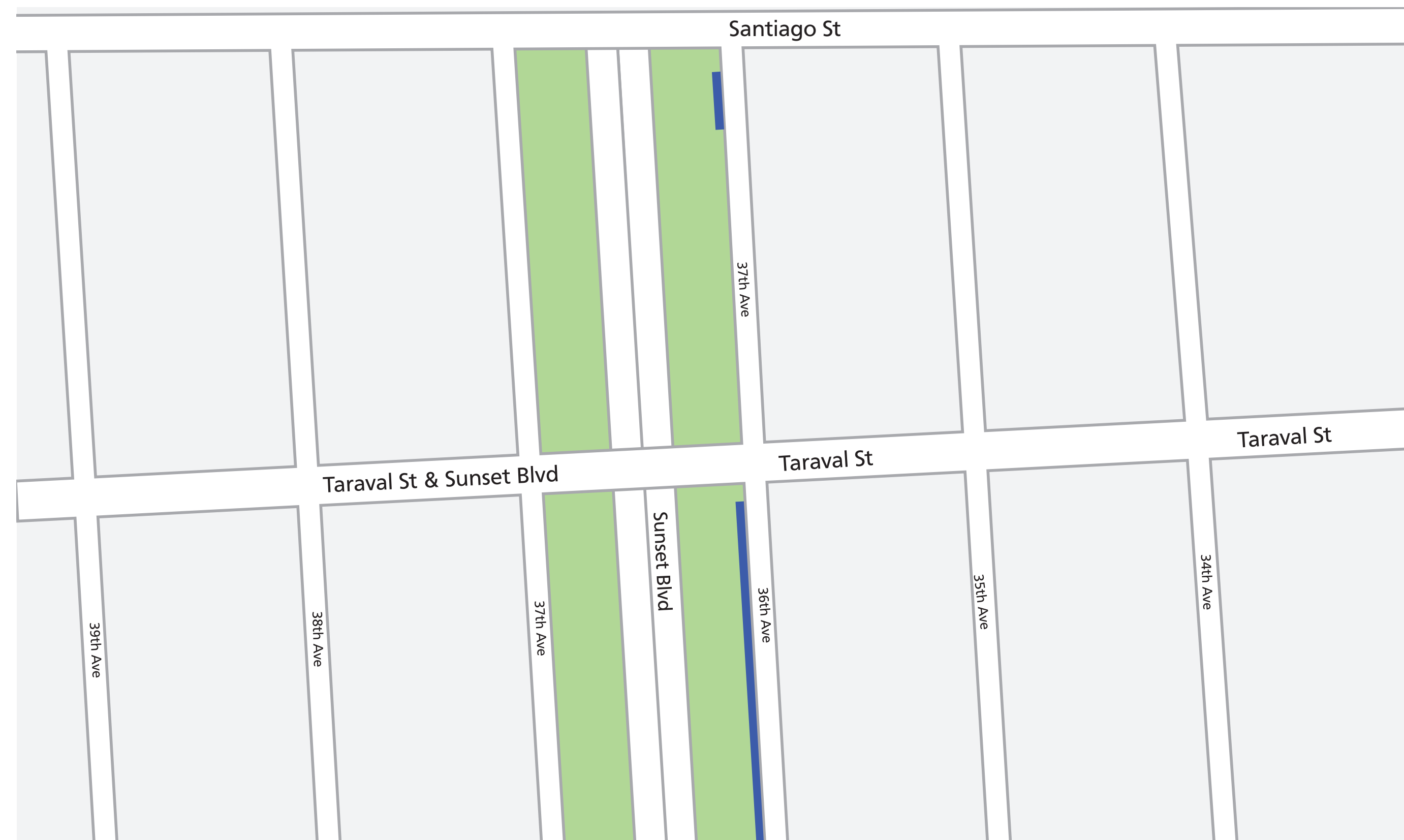
- South side only as it is adjacent to park
- Grade is ok for staging needs
- Location length cannot be extended to 28th Avenue as Wawona Street dead ends at 26th Avenue
- Wawona Street between 23rd to 26th Avenue also narrows from 49ft to 28ft in width
- Length: 550 ft
- Parking impact: 25 parking spaces





## 36th Avenue Between Taraval and Ulloa Street

- West side only as it is adjacent to park
- Grade is ok for staging needs
- Length: 600 ft
- Parking impact: 27 parking spaces





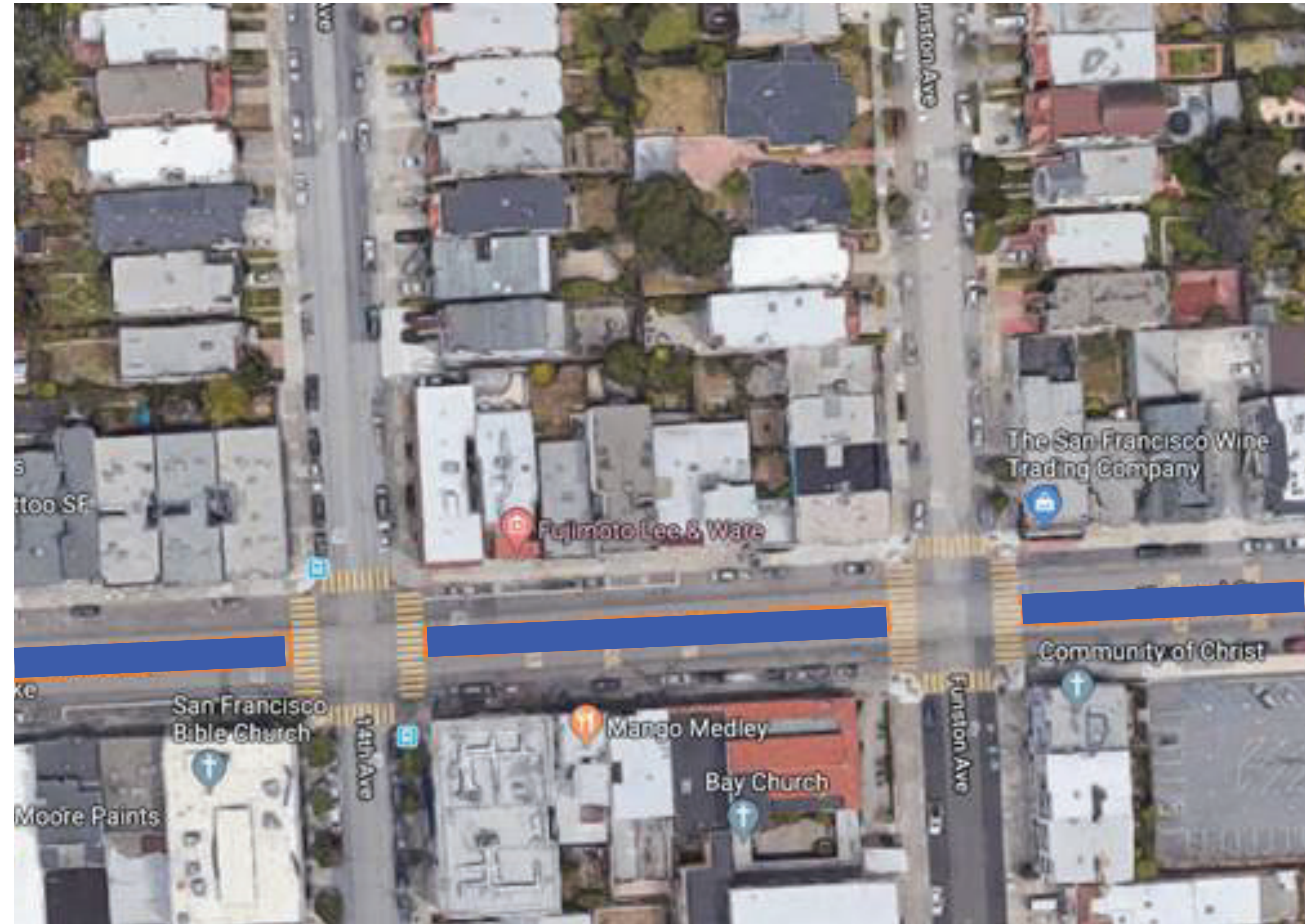
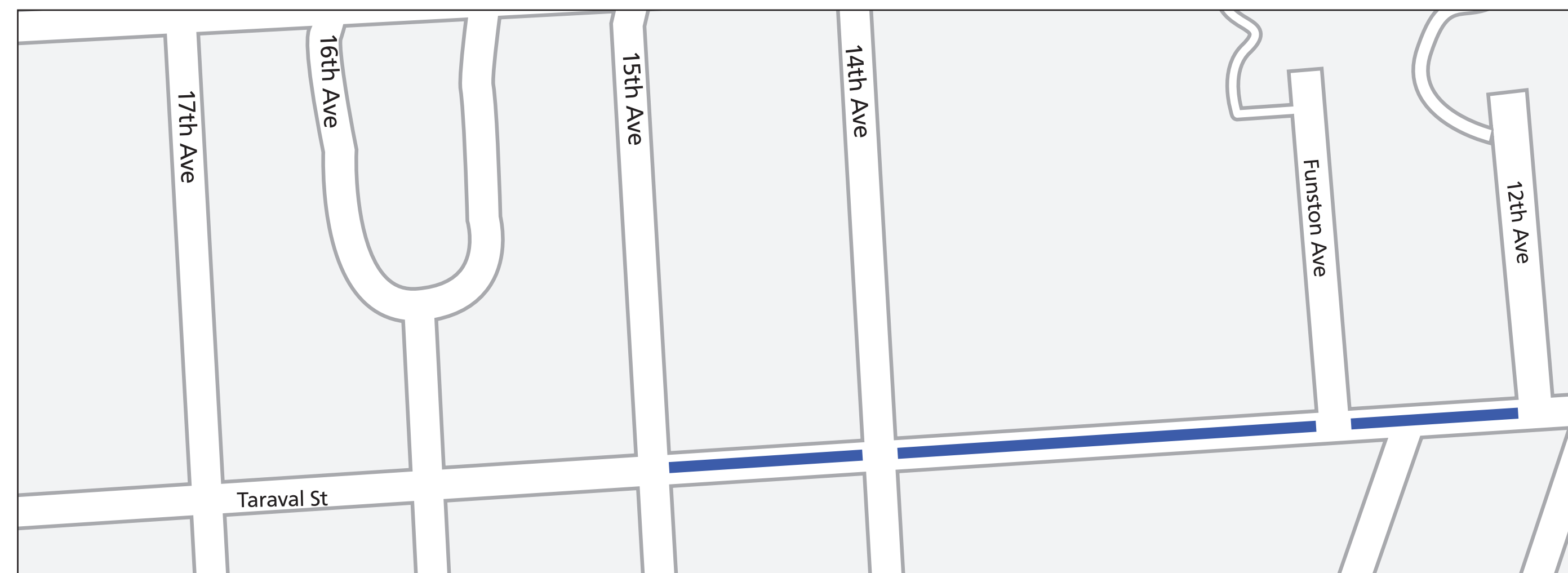
# Segment A Staging Pictures





## Taraval between 12th to 15th Avenue

- In the middle of the blocks as it is wide enough for both equipment and vehicular traffic
- Grade is ok for staging needs
- Length: 600ft
- No impact to parking





## Staging Considerations

- Safe
- Long length
- Close proximity to worksite
- Adjacent to a park
- No sharp corner turns
- Flat or low grade
- Not blocking properties and businesses

### Positive Feedback from Segment A Staging:

“Staging is not as bad as we had imagined it to be. We imagined the worst. The construction workers have also kept the space tidy and neat.” -Resident on 48th Avenue (across from Lower Great Highway)

From both residents and merchants, we’ve received several positive feedback on Segment A Contractor’s good housekeeping and diligence in maintaining the area of their work and staging.



