

The New Harvey Milk Plaza



THE FRIENDS OF
HARVEY MILK PLAZA

PERKINS —
EASTMAN



San Francisco Arts Commission

Civic Design Review - Phase 1

December 17th, 2018

Concept Design - Commissioner/Public Comments

- **Comment: Don't compete with Bank of America building (Soulcycle)**
 - ✓ Reduced scale of architecture near Bank of America building (Soulcycle)
- **Comment: Improve universal access and flow**
 - ✓ Provided four-stop elevator, accessible pathway along Soulcycle building, and simplified ground plane
- **Comment: Create gathering space at corner of Castro and Market**
 - ✓ Shifted stairs and escalator west by ~10-15 feet to create larger gathering space
- **Comment: Remember Harvey Milk's legacy**
 - ✓ Everything in the plaza remembers Harvey's legacy, including:
 - Larger gathering space at the corner of Castro/Market
 - Grove of 11 ginkgo trees representing Milk's 11 months in office
 - Exhibition space at the Muni concourse level
 - Freeform canopy framework to support commissioned art
- **Comment: Improve safety and remove code violations**
 - ✓ Raised sunken gardens and straightened stair entry into Castro Station
- **Comment: Create cohesive and simple design**
 - ✓ Provided freeform canopy framework to support commissioned art and connect all aspects of the plaza

Concept Redesign

Freeform Canopy Framework

Aerial View

- Light, steel canopy framework
- Canopy framework supports commissioned art
- Minimal vertical structure
- Independent glass protection for escalator
- Security gate at stair entry to Castro Station (top & bottom)
- Simplified ground plane



Concept Redesign

Freeform Canopy Framework

Aerial View

- Light, steel canopy framework
- Canopy framework supports commissioned art
- Minimal vertical structure
- Independent glass protection for escalator
- Security gate at stair entry to Castro Station (top & bottom)
- Simplified ground plane



Concept Redesign

Freeform Canopy Framework

Site Plan

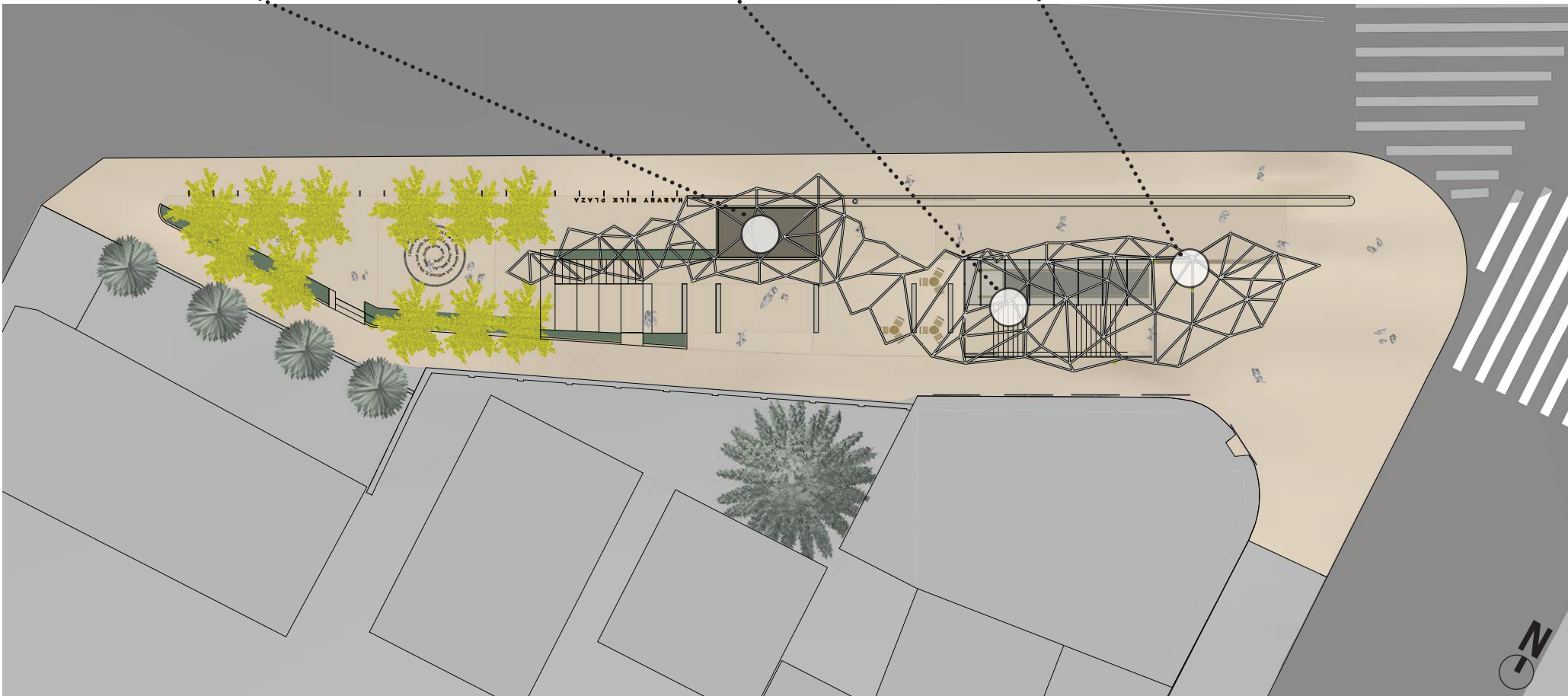
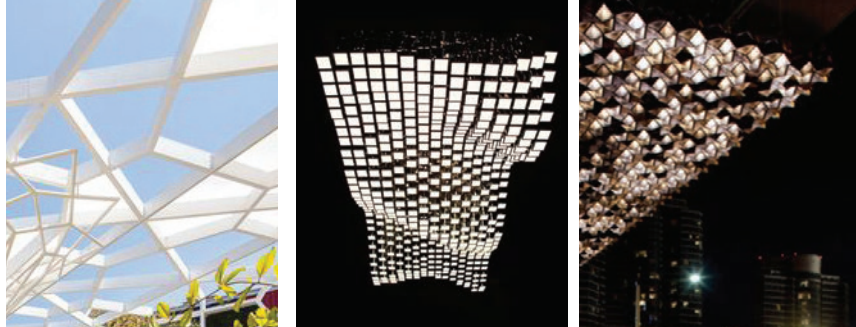
Glass four-stop elevator



Glass protection for escalator



Freeform canopy framework to support commissioned art



Concept Redesign

Freeform Canopy Framework

Site Plan

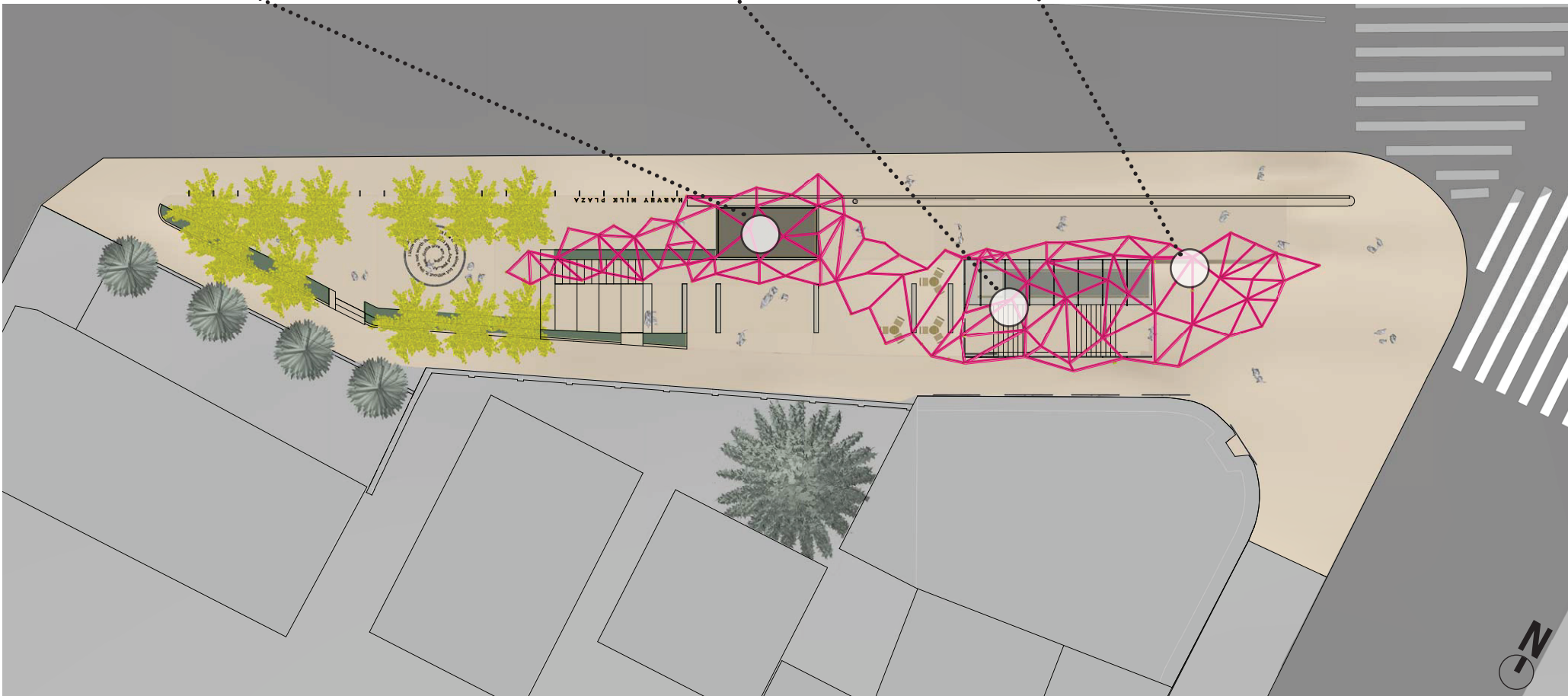
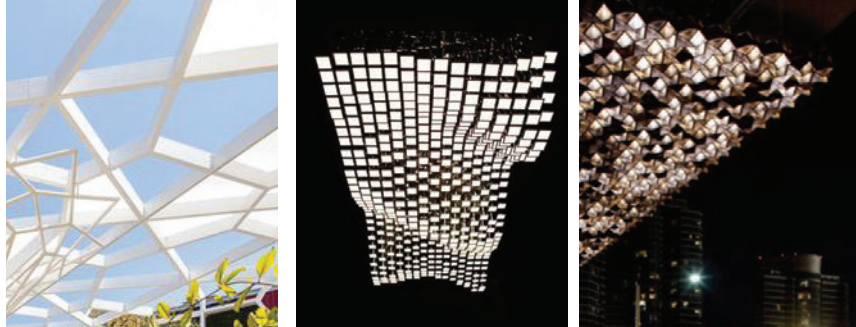
Glass four-stop elevator



Glass protection for escalator



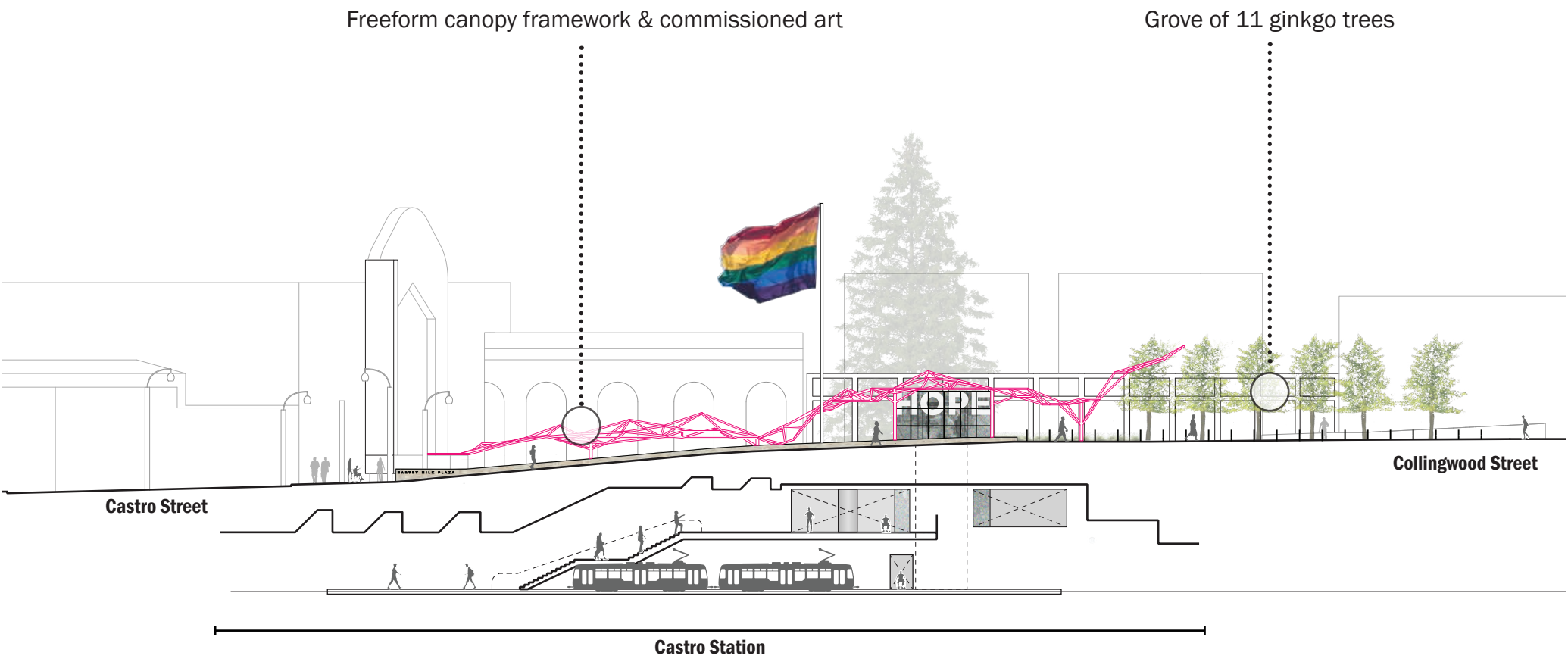
Freeform canopy framework to support commissioned art



Concept Redesign

Freeform Canopy Framework

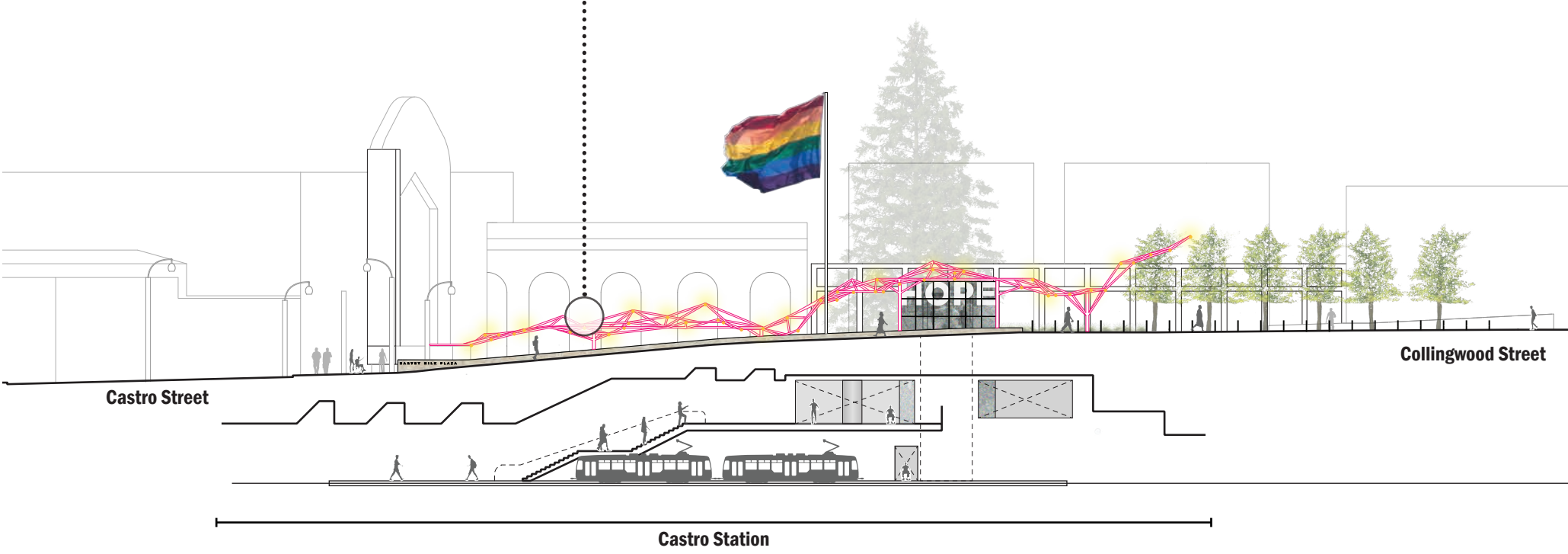
Diagrammatic Section



Concept Redesign

Freeform Canopy Framework

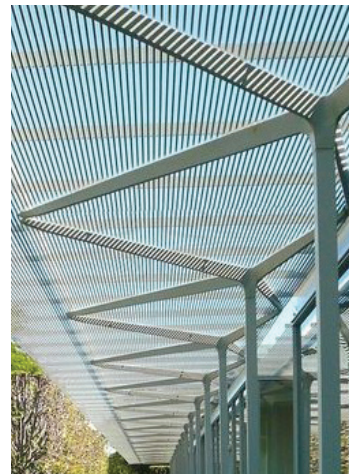
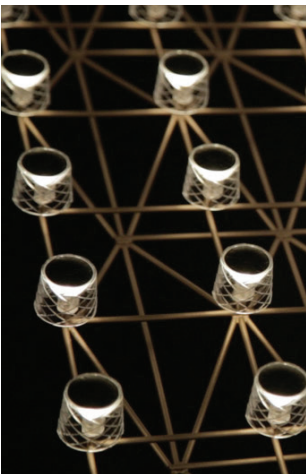
Diagrammatic Section - Lighting Opportunity



Concept Redesign

Freeform Canopy Framework

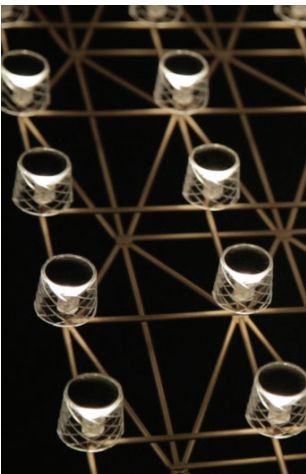
Corner of Market Street and Castro Street



Concept Redesign

Freeform Canopy Framework

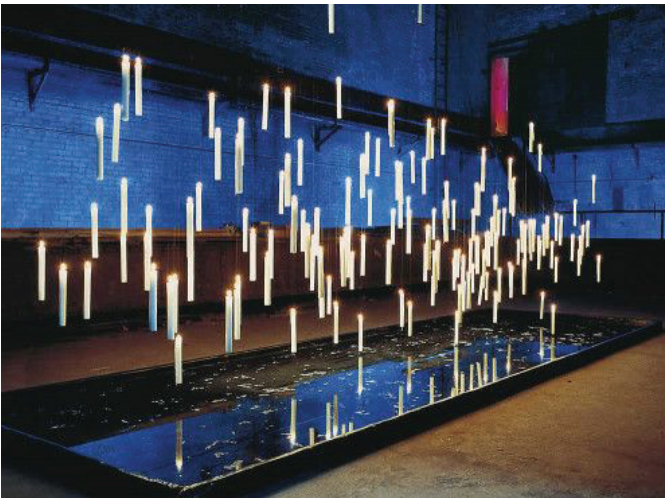
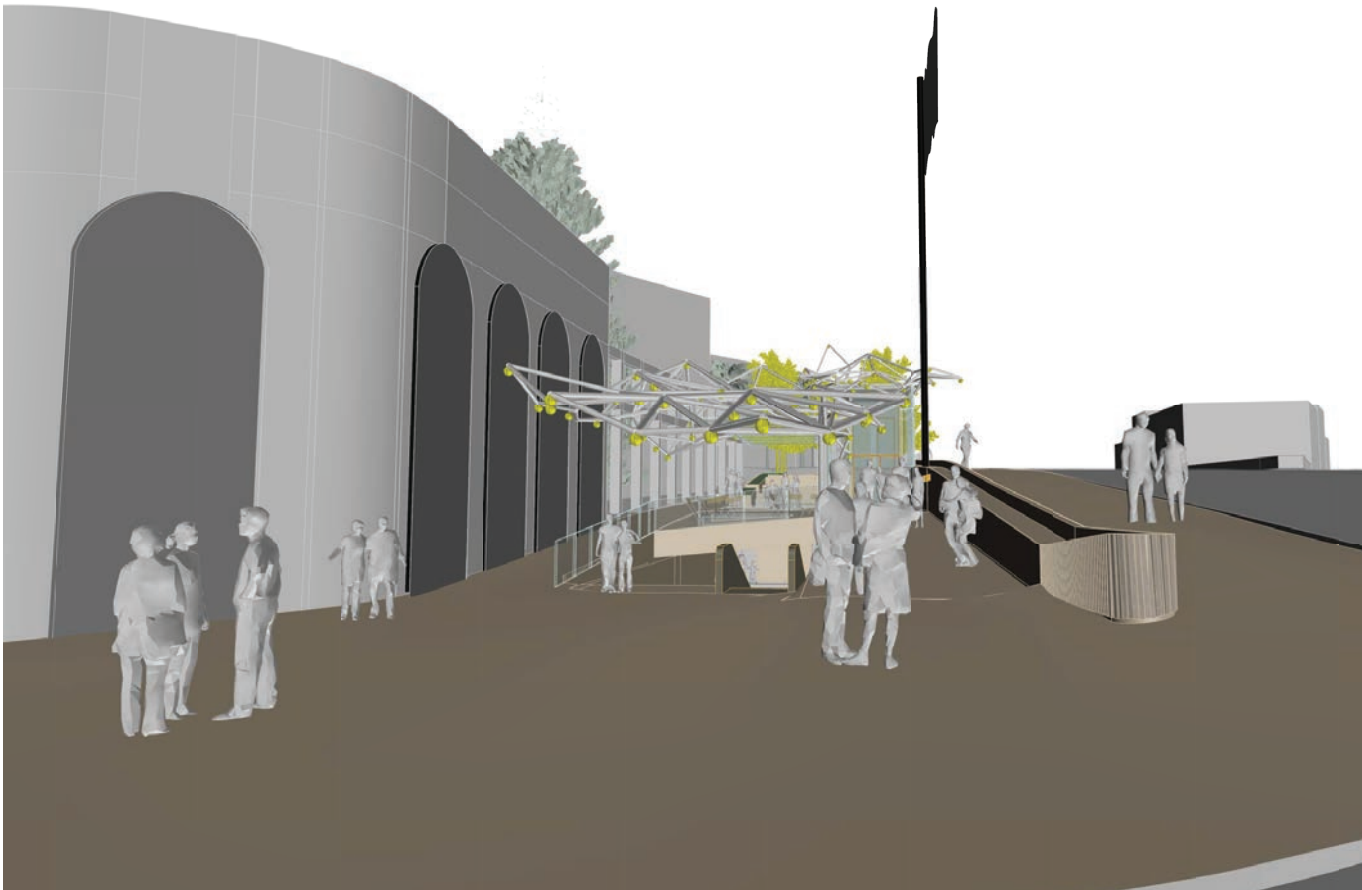
Corner of Market Street and Castro Street



Concept Redesign

Freeform Canopy Framework

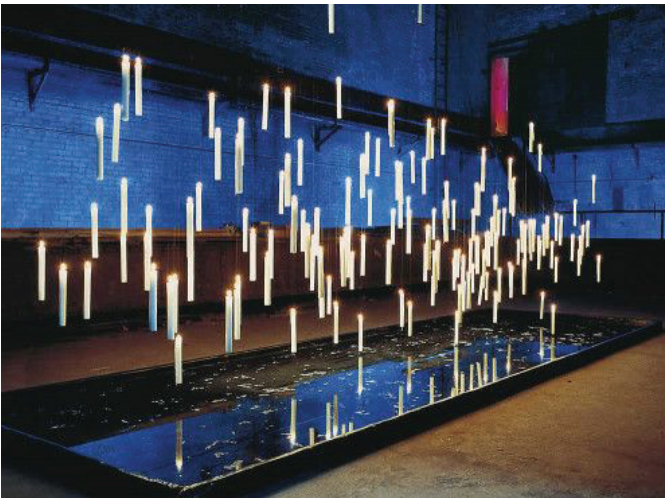
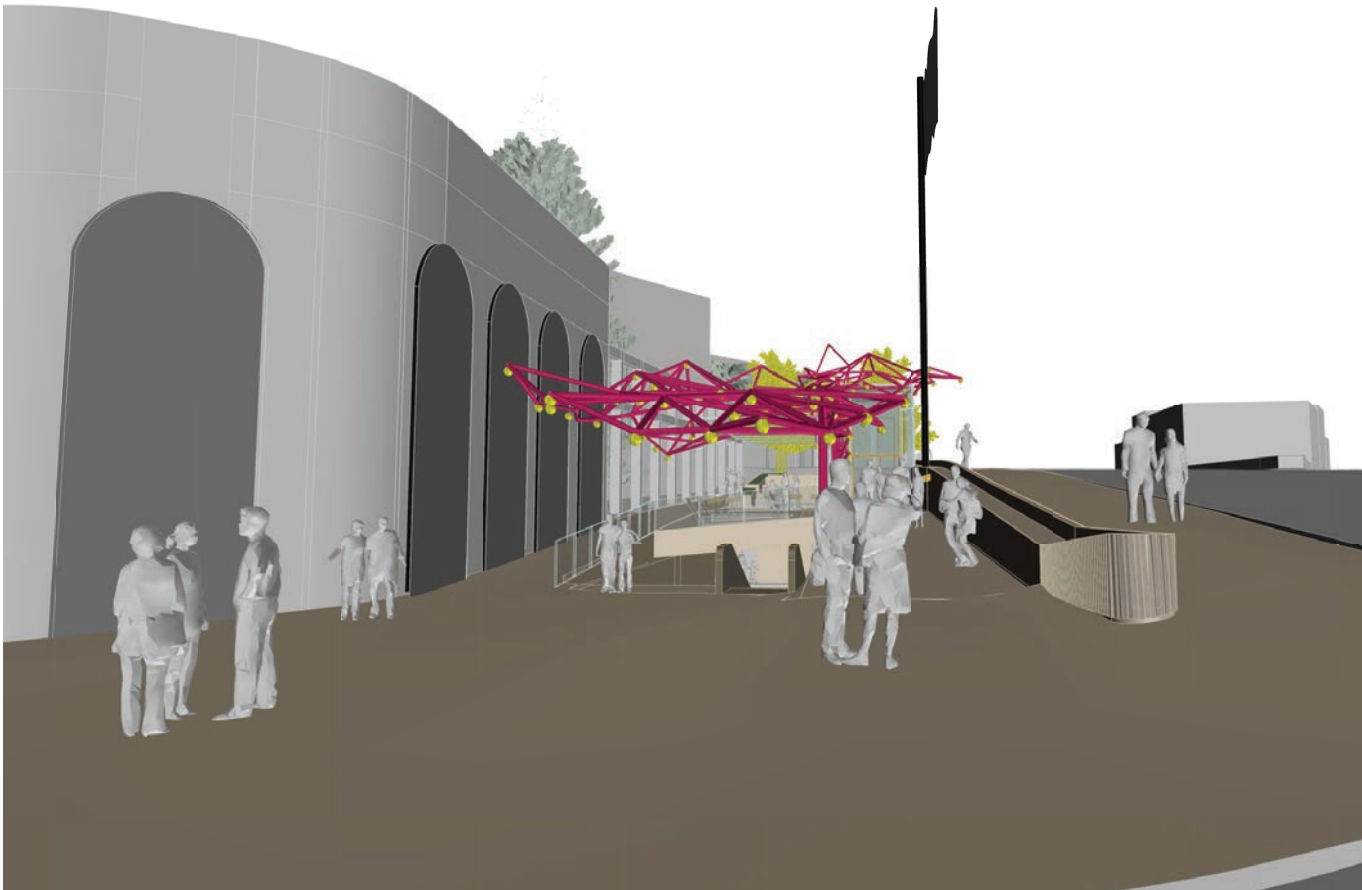
Entrance into Castro Station



Concept Redesign

Freeform Canopy Framework

Entrance into Castro Station



Concept Redesign

Freeform Canopy Framework - Structural Variations

Corner of Market Street and Castro Street

Freeform canopy structure can be accomplished in a variety of ways:

- Steel frame
- Faceted triangles
- Tensile structure



Steel frame



Faceted triangles



Tensile structure

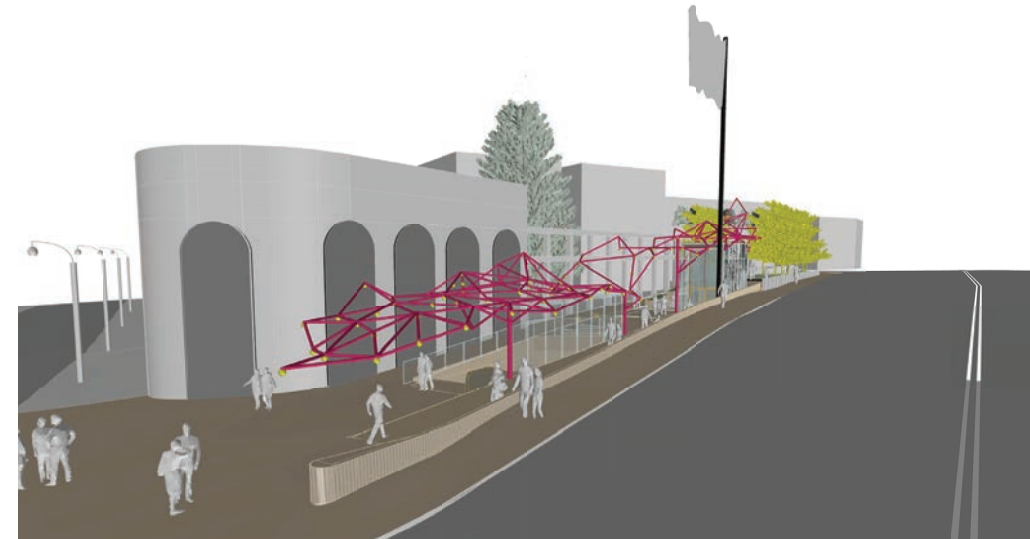
Concept Redesign

Freeform Canopy Framework - Structural Variations

Corner of Market Street and Castro Street

Freeform canopy structure can be accomplished in a variety of ways:

- Steel frame
- Faceted triangles
- Tensile structure



Steel frame



Faceted triangles



Tensile structure

Concept Redesign

Freeform Canopy Framework - Structural Variations

Aerial View

Freeform canopy structure can be accomplished in a variety of ways:

- Steel frame
- Faceted triangles
- Tensile structure



Steel frame



Faceted triangles



Tensile structure

Concept Redesign

Freeform Canopy Framework - Structural Variations

Aerial View

Freeform canopy structure can be accomplished in a variety of ways:

- Steel frame
- Faceted triangles
- Tensile structure



Steel frame



Faceted triangles



Tensile structure

Concept Redesign

Freeform Canopy Framework - Structural Variations

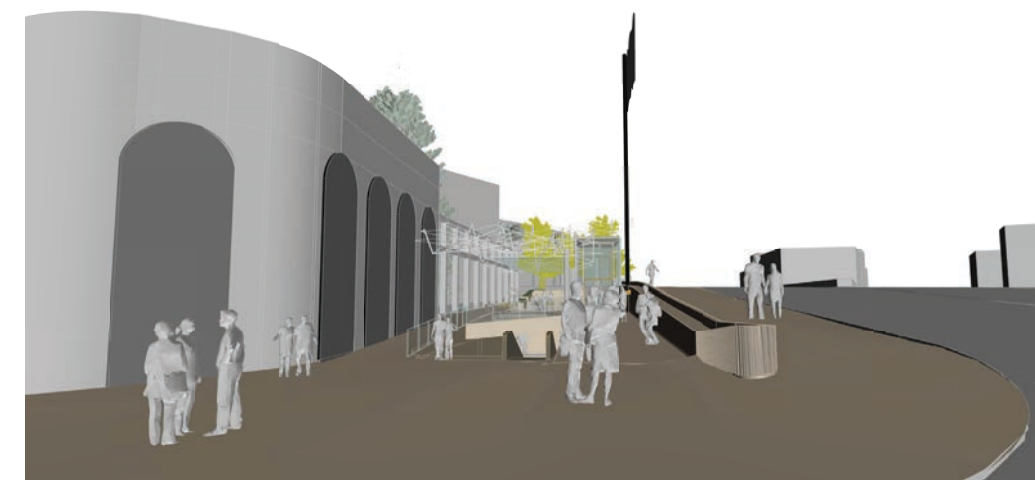
Entrance into Castro Station

Freeform canopy structure can be accomplished in a variety of ways:

- Steel frame
- Faceted triangles
- Tensile structure



Steel frame



Faceted triangles



Tensile structure

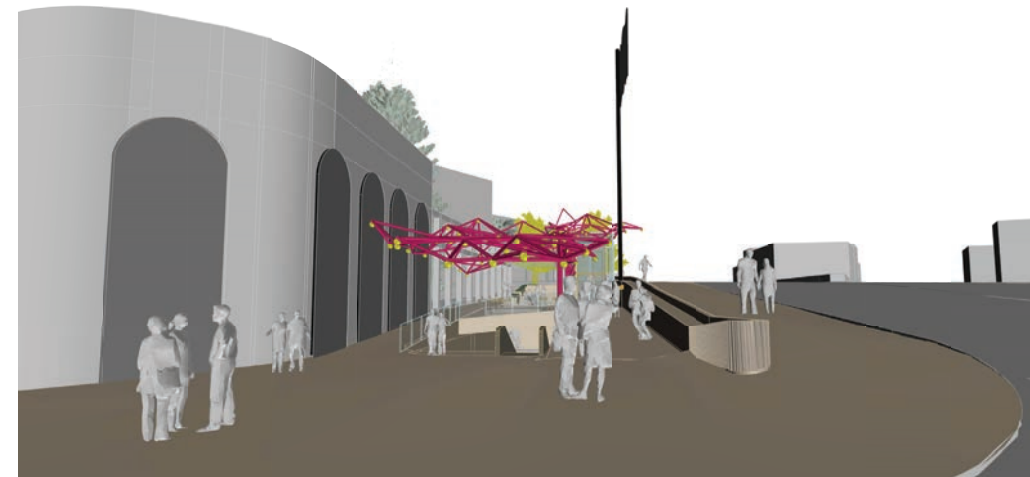
Concept Redesign

Freeform Canopy Framework - Structural Variations

Entrance into Castro Station

Freeform canopy structure can be accomplished in a variety of ways:

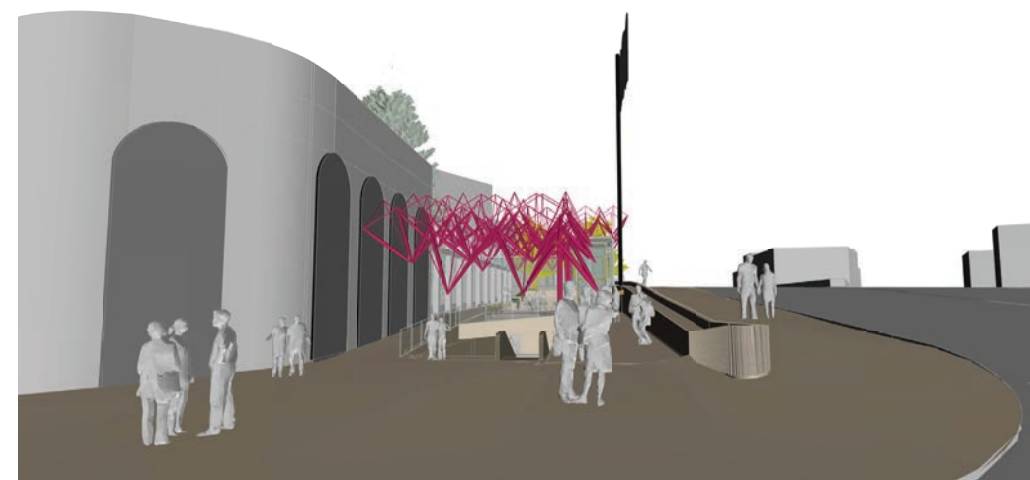
- Steel frame
- Faceted triangles
- Tensile structure



Steel frame



Faceted triangles



Tensile structure

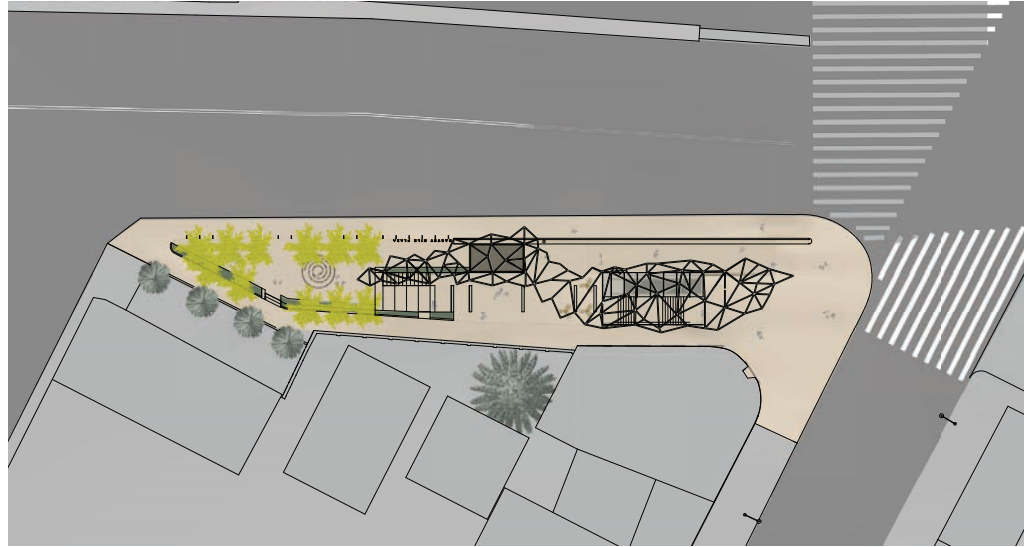
Concept Redesign

Freeform Canopy Framework - Structural Variations

Site Plan

Freeform canopy structure can be accomplished in a variety of ways:

- Steel frame
- Faceted triangles
- Tensile structure



Steel frame



Faceted triangles



Tensile structure

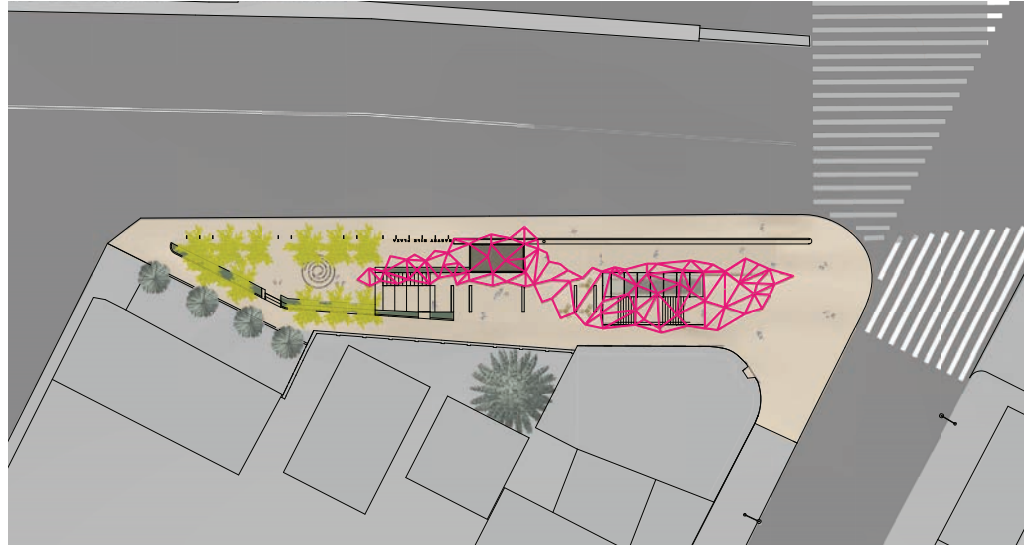
Concept Redesign

Freeform Canopy Framework - Structural Variations

Site Plan

Freeform canopy structure can be accomplished in a variety of ways:

- Steel frame
- Faceted triangles
- Tensile structure



Steel frame



Faceted triangles

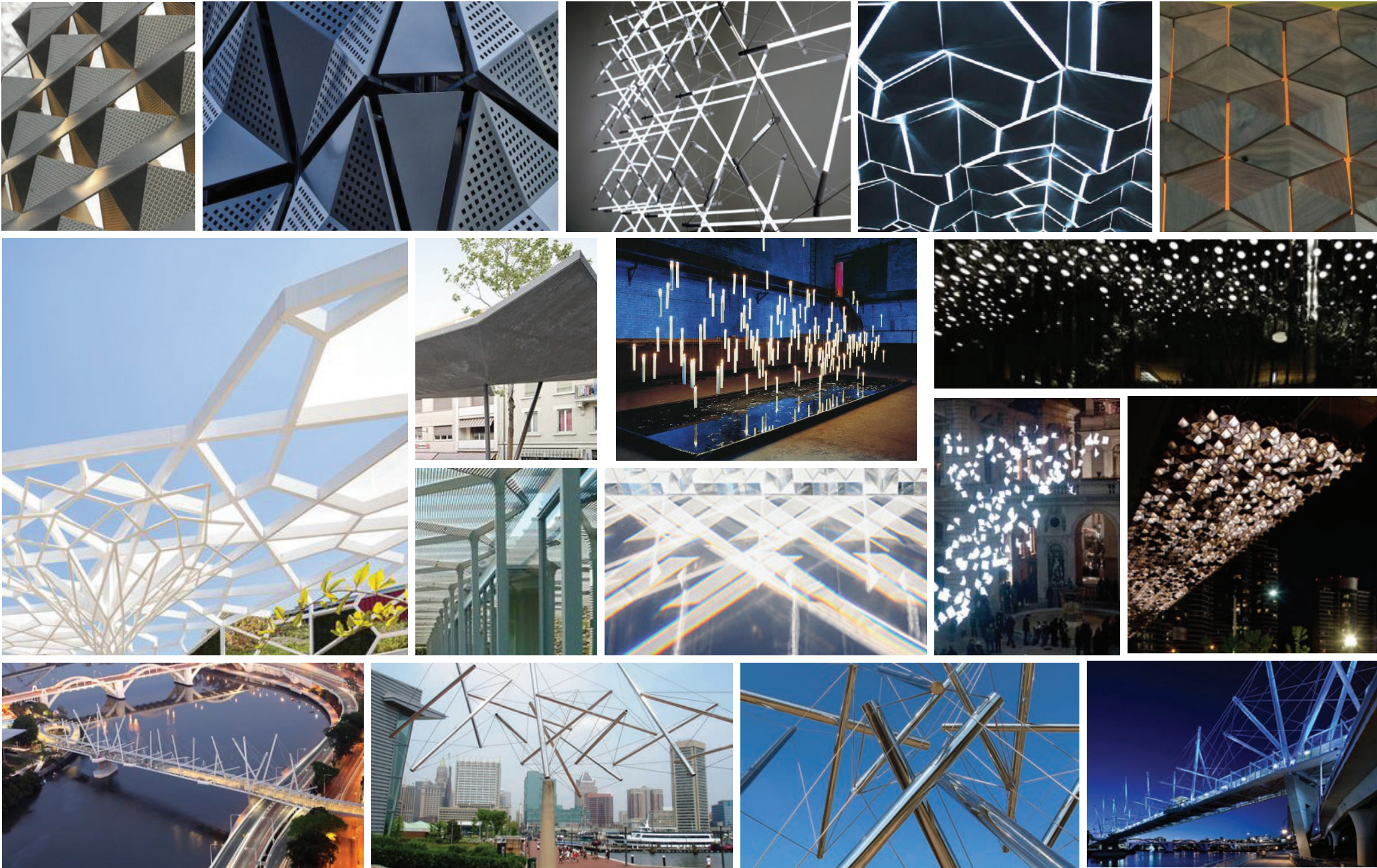


Tensile structure

Concept Redesign

Precedent Imagery

Freeform Canopy Framework to Support Commissioned Art





THE FRIENDS OF
HARVEY MILK PLAZA

In collaboration with the Castro Community and

PERKINS —
EASTMAN

ARUP

P R O P P +
G U E R I N

swa



LIGHTSWITCH®



San Francisco
Planning

BART
ba

sfac san francisco
arts commission



Concept Redesign

Freeform Canopy Framework

Diagrammatic Section

