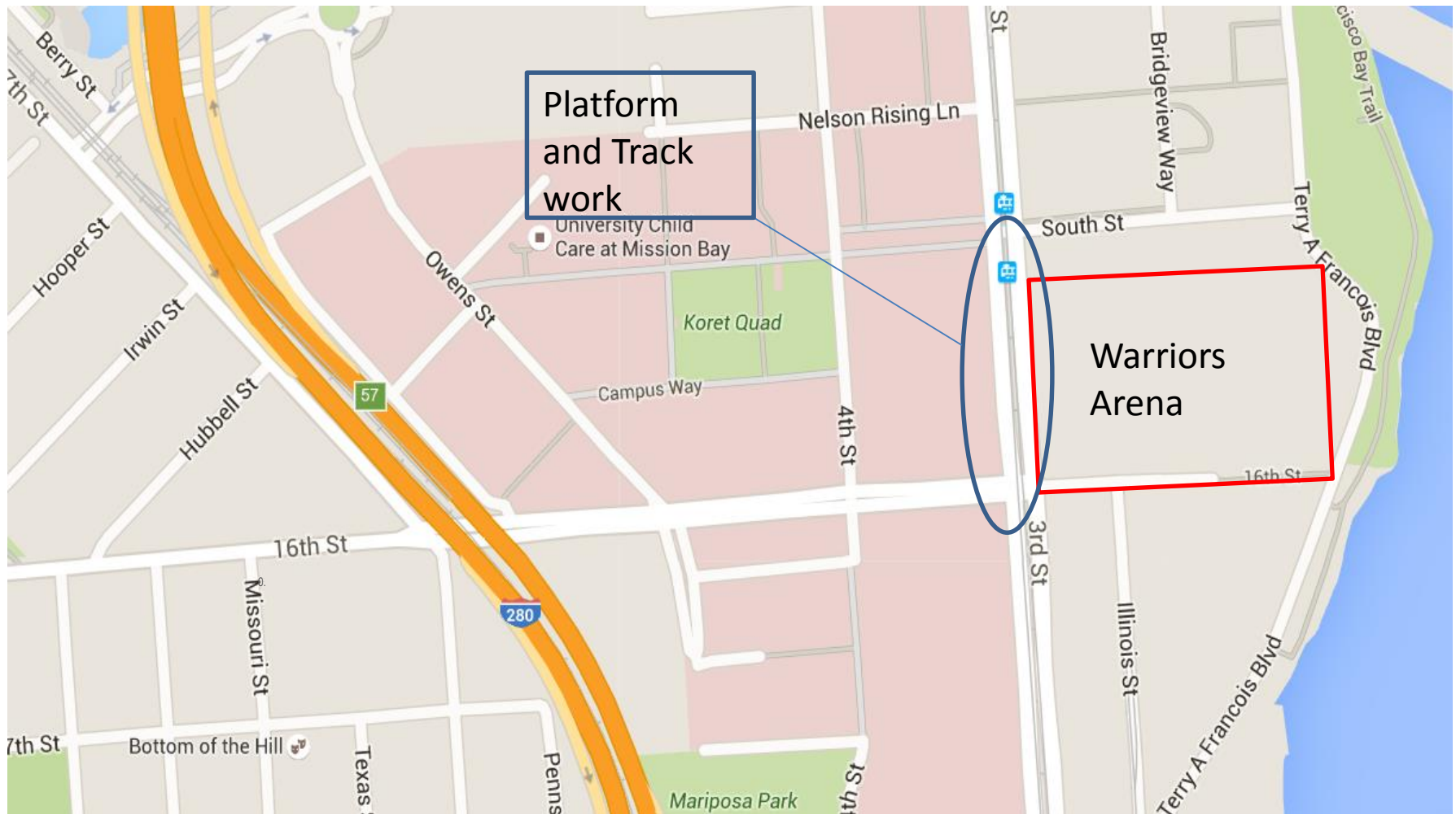




**SFMTA**  
Municipal  
Transportation  
Agency

# **UCSF Platform and Track Improvement Project**

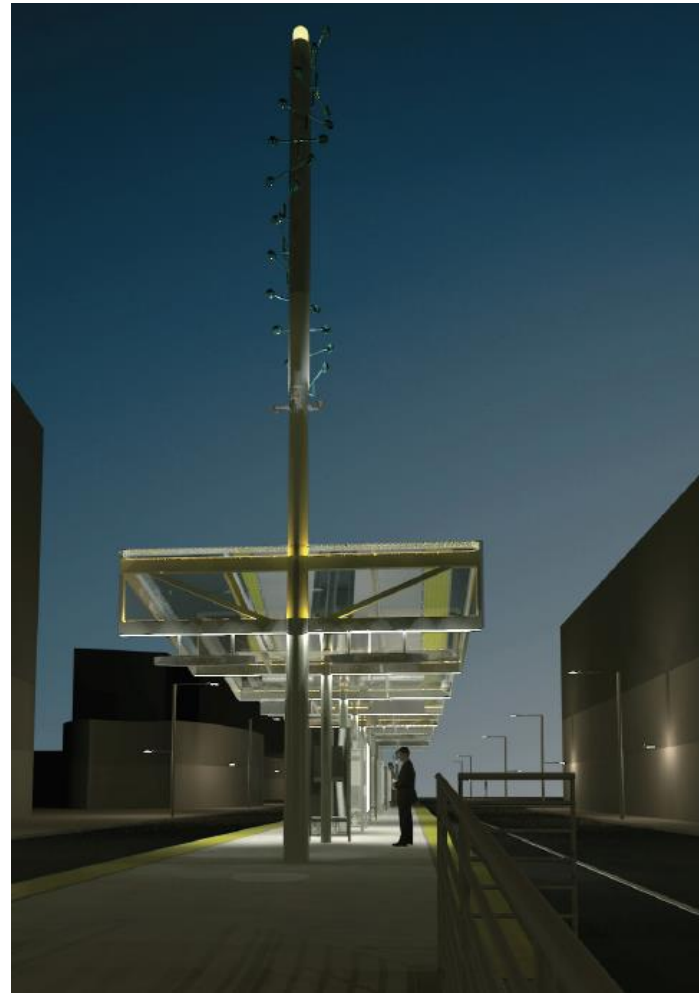
# PROJECT MAP – PLATFORM AND TRACK WORK



# PROPOSED PLATFORM RENDERING



# PROPOSED PLATFORM RENDERING



# CONSTRUCTION PROGRESS

- SFMTA Board approved construction Contract – March 2018
- Notice to Proceed issued – April 2018
- Contractor working from sidewalk toward trackway with the installation of various underground utilities.
- New overhead contact poles (OCS) and foundations were installed.

# CONSTRUCTION SEQUENCING

- T-Third Bus Shuttles

- Closure of existing Platform (Nov 2018)
- 1<sup>st</sup> weekend November/December 2018 - Demo of existing platform, installation of crossovers and platform canopies
- 16 day no access to MME – Demo of existing track and installation of new track and platform foundation (Jan 2019)
- 5 weeks access to MME – Construction of platform sidewalls and top slab (Jan to Feb 2019)

# PROJECT SCHEDULE

Milestone	Duration
Environmental:	<i>Part of Warrior EIR. BOS Approved Nov 2015 <b>DONE</b></i>
Conceptual Engineering:	<i>March 2017 <b>DONE</b></i>
Detailed Design:	<i>March to Nov 2017 <b>DONE</b></i>
Advertise & Award:	<i>Nov 2017- March 2018 <b>DONE</b></i>
Construction:	April 2018 – April 2019
Testing	May -July 2019
Warrior Stadium Opening	Aug 2019

# PUBLIC OUTREACH

In order to inform Muni customers about service changes and inform local residents about construction work, the following outreach is currently planned or being implemented.

## ***Primary, recurring outreach tactics***

- Supervisor updates as necessary
- Email blasts/ project updates
- Merchant and neighborhood association meetings
  - Dogpatch Neighborhood Association
  - Potrero Dogpatch Merchants Association
  - Dogpatch Merchants Association
- Platform alert posters



# PUBLIC OUTREACH

## ***Detailed, specific outreach tactics***

### – Signage plan

- Platform decommission: signs will be posted before and after the platform's decommission in mid-November to alert customers
- Bus shuttle service: signs will be posted along the bus shuttle route and will act as wayfinding and bus stop finding signs

### – Ambassador deployment

- Platform decommission: ambassadors will be deployed near the platform to alert customers that the platform is out of use
- Bus shuttle service: ambassadors will be deployed at Embarcadero and key stops along the T Third to assist customers during the service change