

## SFMTA - TASC SUMMARY SHEET

<b>PreStaff_Date:</b> 8/13/2024 <b>Requested_by:</b> SFMTA <i>ch</i> <b>Handled:</b> Ryan Yun <i>RF KS</i> <b>Section Head :</b> CL/MV <i>Abel</i>	<input type="checkbox"/> <b>Public Hearing Consent</b> <input checked="" type="checkbox"/> <b>Public Hearing Regular</b> <input type="checkbox"/> <b>Informational / Other</b> <small>PH - Regular</small>	<b>No objections:</b> _____ <b>Item Held:</b> _____ <b>Other:</b> _____
---	---	---

**Location:** Clement Street, between Arguello Boulevard and 12th Avenue

**Subject:** Bus Zone Modifications

**PROPOSAL / REQUEST:**

RESCIND – BUS ZONE  
 Clement Street, north side, from 18 feet to 57 feet west of 4th Avenue

RESCIND - BUS ZONE  
 ESTABLISH - METERED YELLOW ZONE, COMMERCIAL LOADING, 30-MINUTE LIMIT, 8AM TO 6PM, MONDAY THROUGH SATURDAY  
 Clement Street, north side, from 15 feet to 43 feet west of Arguello Boulevard (adds 1 parallel space)  
 Clement Street, south side, from 10 feet to 34 feet east of 6th Avenue (adds 2 angled spaces)  
 Clement Street, south side, from 8th Avenue to 24 feet easterly (adds 1 parallel space)  
 Clement Street, south side, from 13 feet to 38 feet east of 10th Avenue (adds 1 parallel space)  
 Clement Street, south side, from 48 feet to 74 feet east of 10th Avenue (adds 2 angled spaces)

**SEE NEXT 2 PAGES FOR FULL PROPOSAL**

RESCIND - BUS ZONE  
 ESTABLISH - GENERAL LOADING ZONE, 5-MINUTE LIMIT, 9AM TO 8PM DAILY

**BACKGROUND INFORMATION / COMMENTS**

BACKGROUND INFORMATION  
 Removal of Clement Street bus zones at the request of the Supervisor and fronting property owners.

The bus zones on Clement Street from 12th Ave to Arguello Boulevard served 2 Clement bus route. This route currently no longer operates.

These changes would be implemented through a temporary directive following public hearing for up to two years.

Total: +2 Yellow Zones, +10 General Loading Zones, +16 General Metered Parking, +5 Green Short-term Parking, +2 Bicycle Corrals

**COMMENTS**

A removable parklet is placed within the westbound bus zone at Clement Street and 4th Avenue daily. The business owner at 253 Clement will pursue a Shared Space permit. We are proposing to add a bike corral adjacent to permitted shared space in the westbound bus zone at Clement Street and 4th Avenue.

The business owner at 908 Clement will pursue a Shared Space permit. No changes proposed at Clement Street north side, west of 10th Avenue.

<b>HEARING NOTIFICATION AND PROCESSING NOTES:</b>	<b>ENVIRONMENTAL CLEARANCE BY:</b> <input checked="" type="checkbox"/> SFMTA <input type="checkbox"/> Attached <input type="checkbox"/> Pending
---	--

**CHECK IF PREPARING SEPARATE SFMTA BOARD CALENDAR ITEM FOR PROPOSAL:**

**RESCIND – BUS ZONE**

Clement Street, north side, from 18 feet to 57 feet west of 4th Avenue

**RESCIND - BUS ZONE**

**ESTABLISH - METERED YELLOW ZONE, COMMERCIAL LOADING, 30-MINUTE LIMIT, 8AM TO 6PM, MONDAY THROUGH SATURDAY**

Clement Street, north side, from 15 feet to 43 feet west of Arguello Boulevard (adds 1 parallel space)

Clement Street, south side, from 10 feet to 34 feet east of 6th Avenue (adds 2 angled spaces)

Clement Street, south side, from 8<sup>th</sup> Avenue to 24 feet easterly (adds 1 parallel space)

Clement Street, south side, from 13 feet to 38 feet east of 10th Avenue (adds 1 parallel space)

**RESCIND - BUS ZONE**

**ESTABLISH - GENERAL LOADING ZONE, 5-MINUTE LIMIT, 9AM TO 8PM DAILY**

Clement Street, north side, from 43 feet to 68 feet west of Arguello Boulevard (adds 1 parallel spaces)

Clement Street, north side, from 4th Avenue to 18 feet westerly (adds 1 parallel space)

Clement Street, north side, from 6th Avenue to 40 feet westerly (adds 2 parallel spaces)

Clement Street, north side, from 8th Avenue to 40 feet westerly (adds 2 parallel spaces)

Clement Street, south side, from 55 feet to 67 feet east of 8th Avenue (adds 1 angled space)

Clement Street, south side, from 48 feet to 74 feet east of 10th Avenue (adds 2 angled spaces)

**RESCIND - METERED YELLOW ZONE, COMMERCIAL LOADING, 30-MINUTE LIMIT, 8AM TO 6PM, MONDAY THROUGH FRIDAY ESTABLISH - GENERAL LOADING, 5-MINUTE LIMIT, 8AM TO 8PM DAILY**

Clement Street, south side, from 70 feet to 92 feet east of 6th Avenue

**RESCIND - BUS ZONE**

**ESTABLISH - GENERAL METERED PARKING, 2 HOUR TIME LIMIT, 9 AM TO 6 PM,  
MONDAY THROUGH FRIDAY**

Clement Street, south side, from 34 feet to 70 feet east of 6th Avenue (adds 3 angled spaces)

Clement Street, south side, from 31 feet to 55 feet east of 8th Avenue (adds 2 angled spaces)

Clement Street, north side, from 40 feet to 59 feet west of 8th Avenue (adds 1 parallel space)

Clement Street, north side, from 19 feet to 61 feet west of 12th Avenue (adds 2 parallel spaces)

Clement Street, south side, from 15 feet to 35 feet west of 12th Avenue and 44 feet to 64 feet west of 12th Avenue (adds 2 parallel spaces)

**RESCIND - BUS ZONE**

**ESTABLISH - METERED GREEN ZONE, SHORT-TERM PARKING, 30-MINUTE LIMIT, 8AM  
TO 6PM, MONDAY THROUGH SATURDAY**

Clement Street, north side, from 68 feet to 93 feet west of Arguello Boulevard (adds 1 parallel space)

Clement Street, north side, from 40 feet to 80 feet west of 6<sup>th</sup> Avenue (adds 2 parallel spaces)

Clement Street, south side, from 67 feet to 91 feet east of 8th Avenue (adds 2 angled spaces)

**RESCIND – BUS ZONE**

**ESTABLISH – RED ZONE**

Clement Street, north side, from Arguello Boulevard to 15 feet westerly

Clement Street, south side, from 6th Avenue to 10 feet easterly

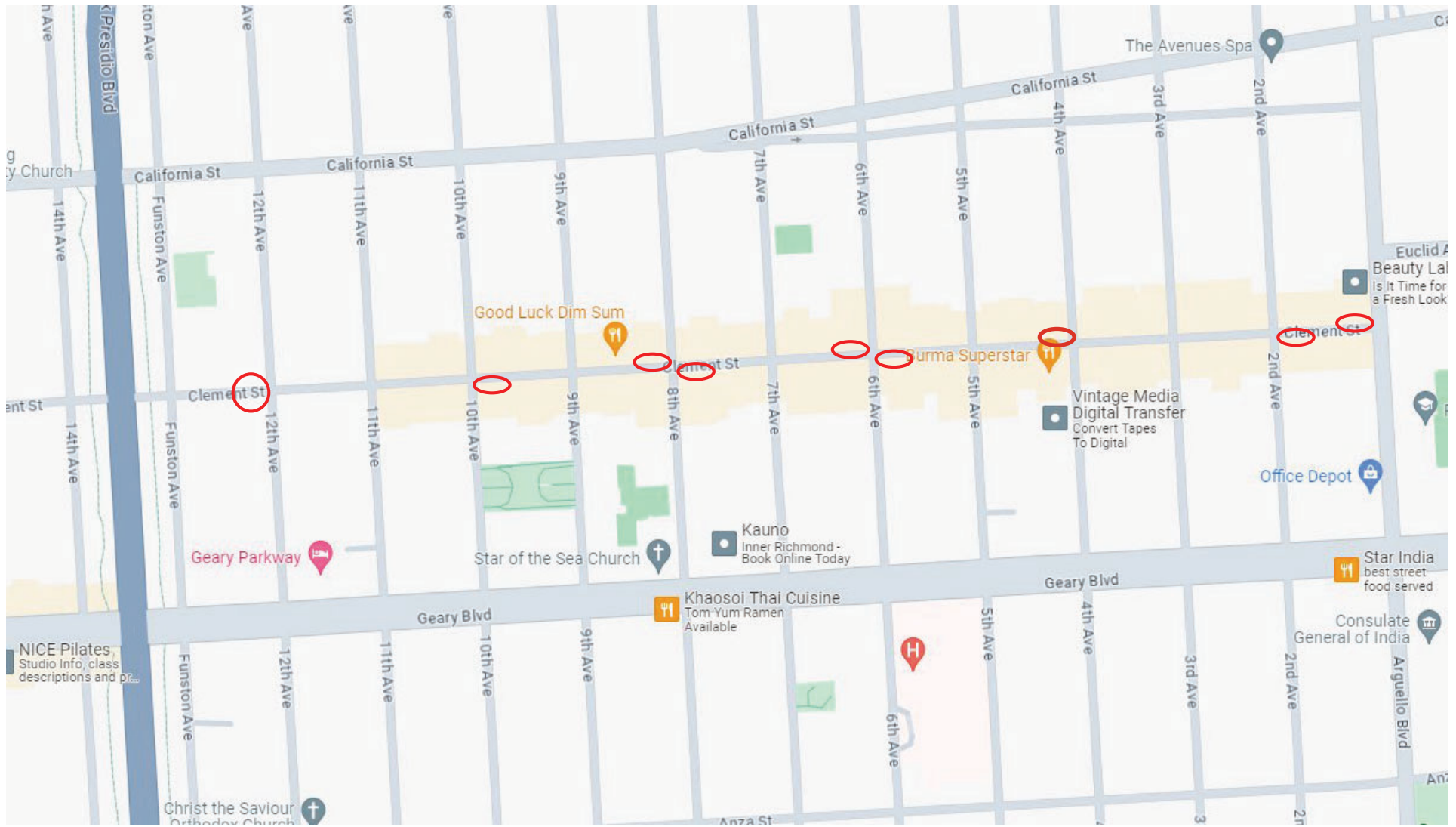
Clement Street, south side, from 24 feet to 31 feet east of 8<sup>th</sup> Avenue

Clement Street, south side, from 10th Avenue to 13 feet easterly

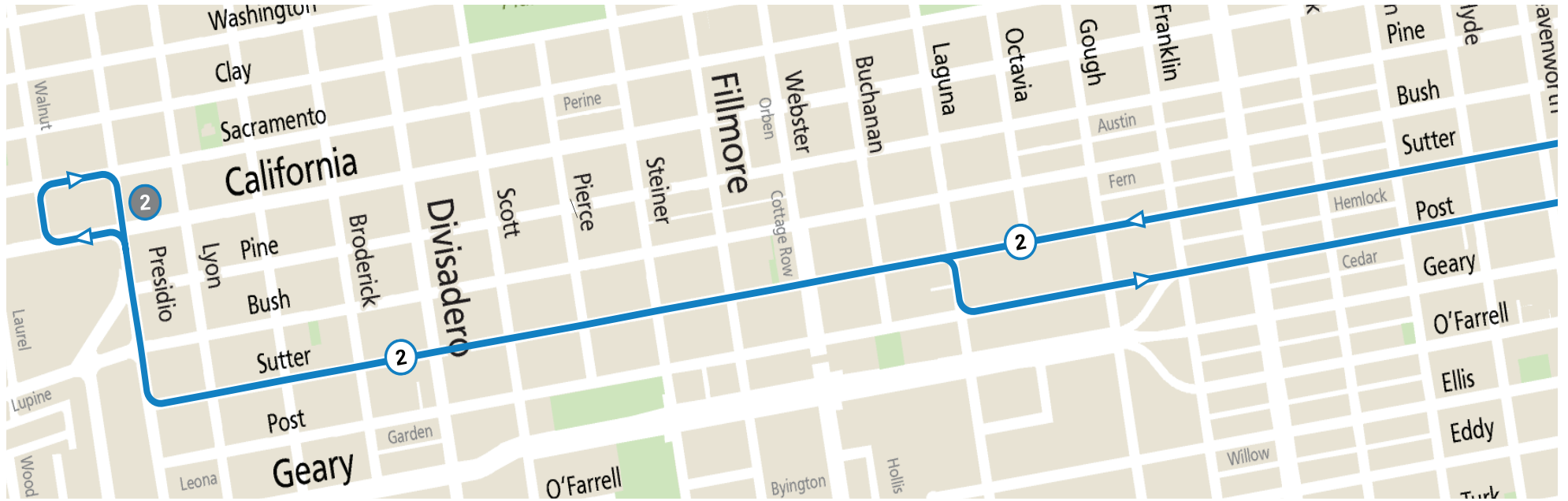
Clement Street, south side, from 38 feet to 48 feet east of 10th Avenue

Clement Street, south side, from 12th Avenue to 15 feet westerly

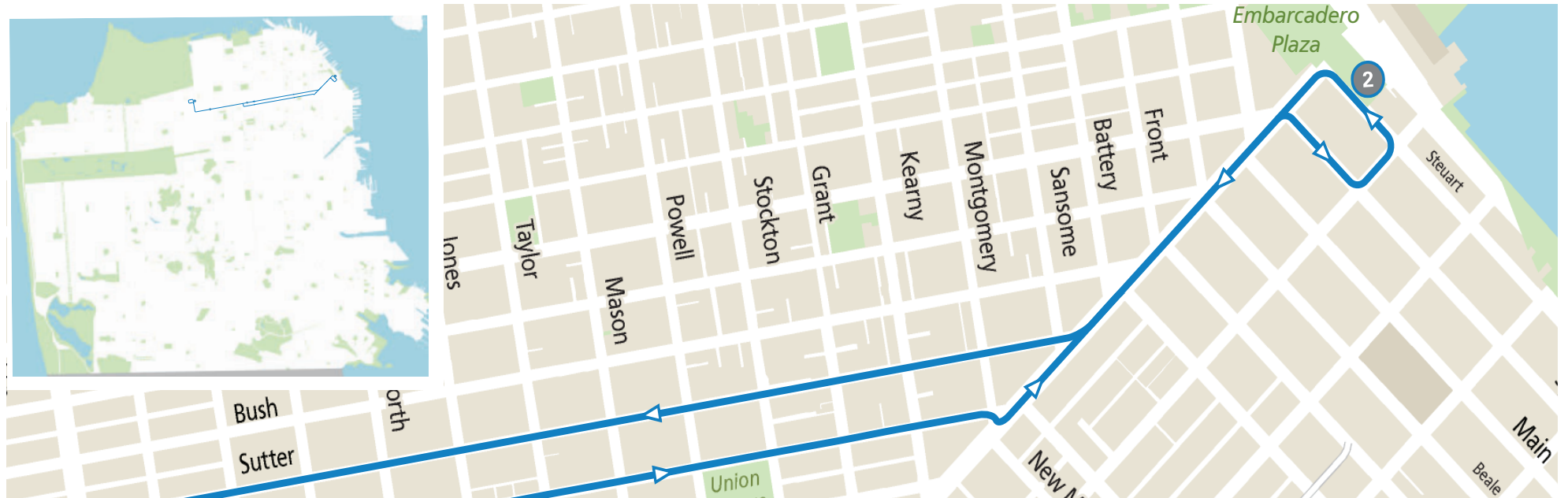
Clement Street, north side, from 19 feet to 28 feet west of 12th Avenue



**California & Presidio to Tenderloin/Lower Nob Hill**



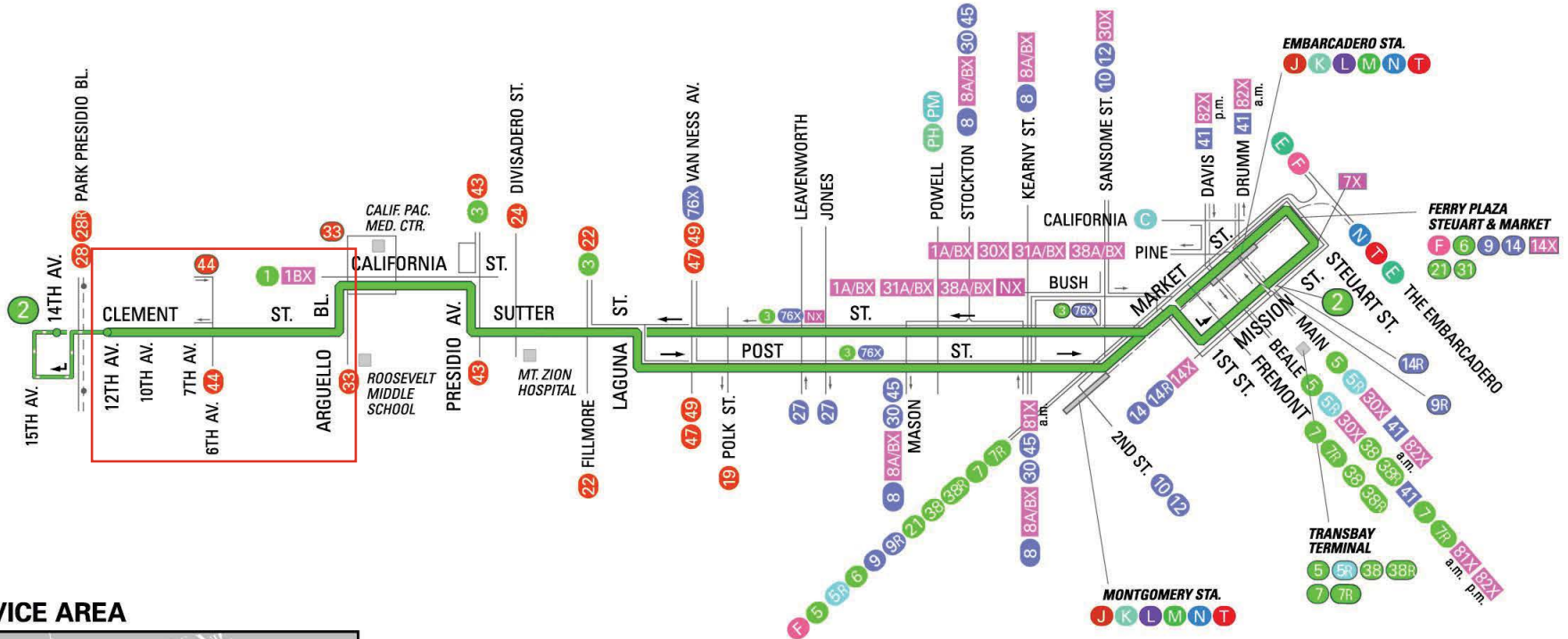
**Tenderloin/Lower Nob Hill to Ferry Plaza (Steuart Terminal)**





**SFMTA**  
Municipal  
Transportation  
Agency

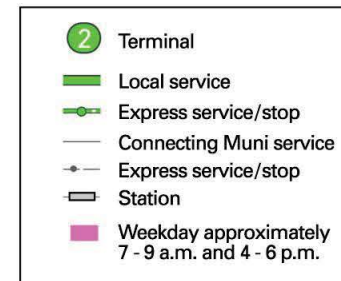
**2 CLEMENT**  
effective 9/26/2015



**SERVICE AREA**



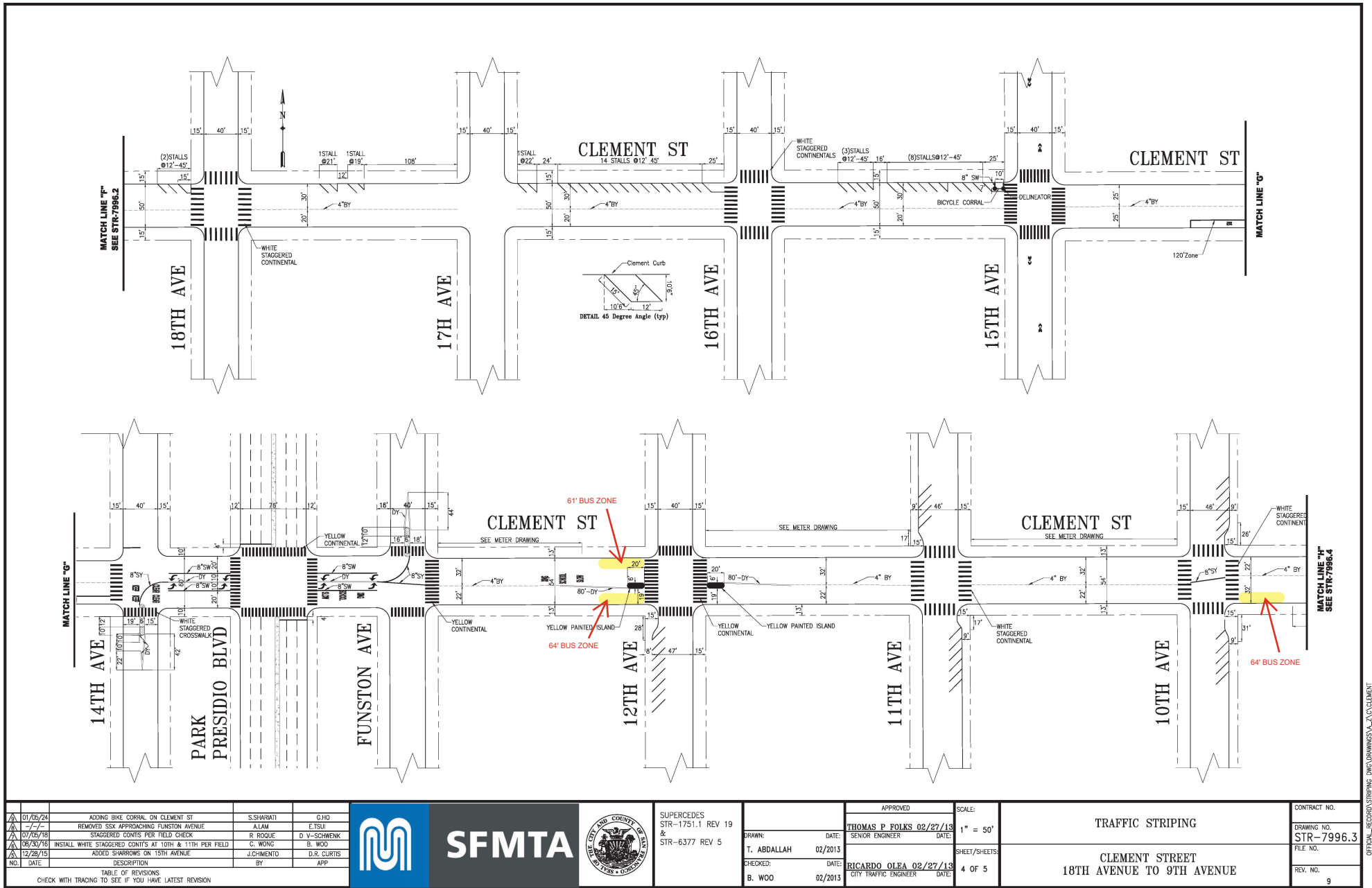
**NORTH**



E 76X WEEKENDS AND HOLIDAYS ONLY

MAP NOT TO SCALE





NO.	DATE	DESCRIPTION	BY	APP.
1	01/05/24	ADDING BIKE CORRAL ON CLEMENT ST	S.SHARATI	C.HIG
2	07/25/18	REMOVED SSX APPROACHING FUNSTON AVENUE	ALAM	E.TSU
3	07/25/18	STAGGERED CONT'S PER FIELD CHECK	R.ROJUE	D.V-SCHWENK
4	18/33/15	INSTALL WHITE STAGGERED CONT'S AT 10TH & 11TH PUR FIELD	C.WONG	B.WOO
5	12/28/15	ADDED SHARROWS ON 15TH AVENUE	J.CHIMENTO	D.R.CURTIS

TABLE OF REVISIONS  
 CHECK WITH TRACING TO SEE IF YOU HAVE LATEST REVISION



SUPERCEDES  
 STR-1751.1 REV 19  
 &  
 STR-6377 REV 5

DRAWN: T. ABDALLAH  
 CHECKED: B. WOO  
 DATE: 02/2013  
 DATE: 02/2013

APPROVED: THOMAS P. FOLKS  
 SENIOR ENGINEER  
 DATE: 02/27/13

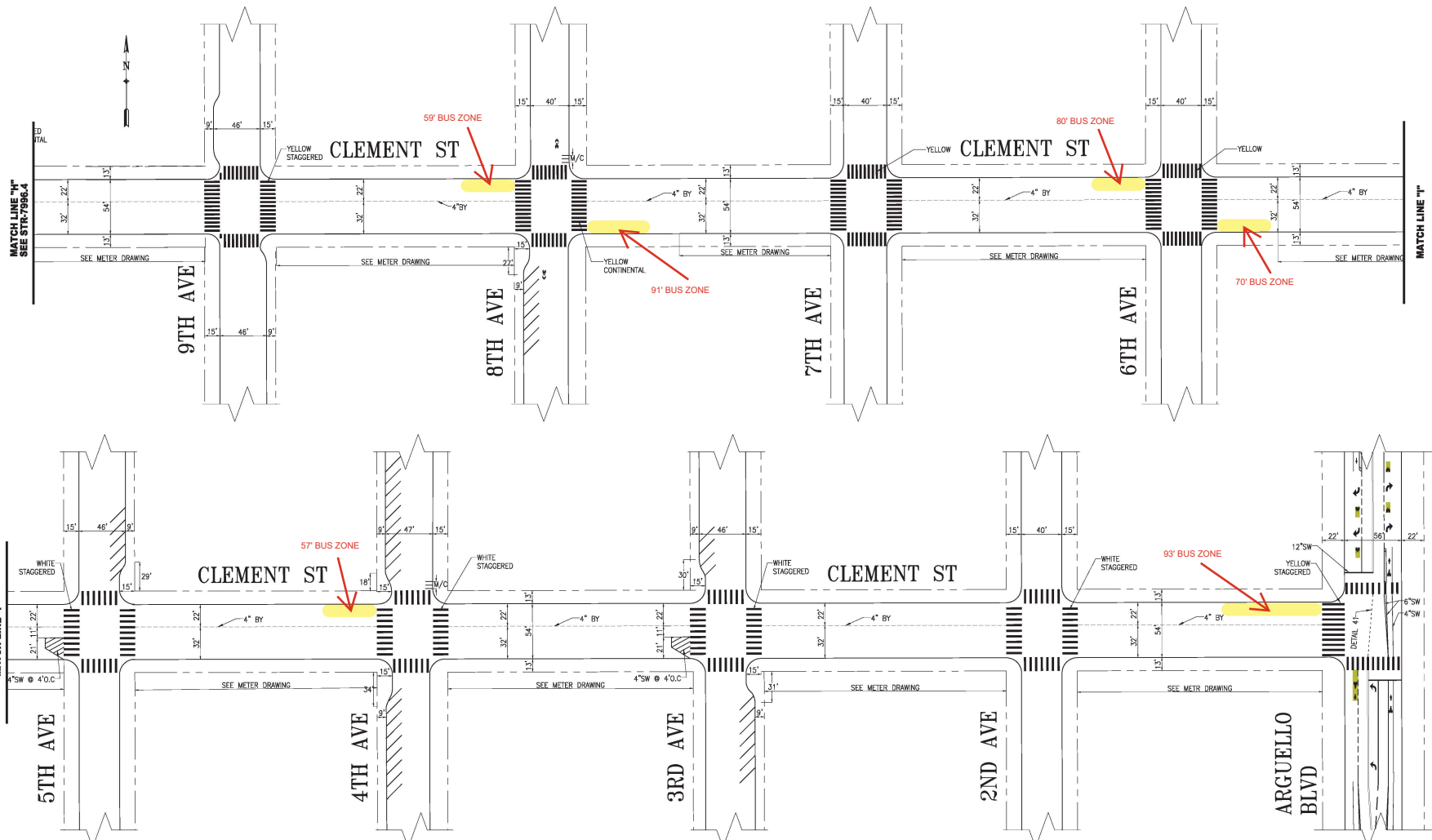
CHECKED: RICARDO OLEA  
 CITY TRAFFIC ENGINEER  
 DATE: 02/27/13

SCALE: 1" = 50'

SHEET/SHEETS: 4 OF 5

TRAFFIC STRIPING  
 CLEMENT STREET  
 18TH AVENUE TO 9TH AVENUE

CONTRACT NO.  
 DRAWING NO.  
 STR-7996.3  
 FILE NO.  
 REV. NO.  
 9



NO.	DATE	DESCRIPTION	BY	APP
1	08/30/16	UPGRADE TO WHITE STAGGERED CONTS AT 2ND & 4TH AVES PER FIELD	C.WONG	B.WOO
2	09/26/19	ADD ADV LIMIT LINE YELLOW STAGG CONTI CONVERG TO GREEN BACK SHROUWS & GREEN SKE LN @ ARGUELLO	C.BECK	M.SALLABERRY
3	09/26/19	UPDATED CURB LINES ON 9TH AVE PER FIELD	D.CARR	M.SALLABERRY
4	01/00/00	REMOVED SSX APPROACHING 9TH AVENUE	A.JAM	E.TSUI

TABLE OF REVISIONS  
CHECK WITH TRACING TO SEE IF YOU HAVE LATEST REVISION



**SFMTA**



SUPERSEDES: STR-1751.2 REV19  
DRAWN: T.ABDALLAH  
CHECKED: B.WOO  
DATE: 02/27/13

APPROVED  
THOMAS P. FOLKS 02/27/13  
SENIOR ENGINEER  
RICARDO OLEA 02/27/13  
CITY TRAFFIC ENGINEER  
SCALE: 1" = 50'  
SHEET/SHEETS: 5 OF 5

TRAFFIC STRIPING  
9TH AVENUE TO ARGUELLO BOULEVARD

CONTRACT NO.  
DRAWING NO. STR-7996.4  
FILE NO.  
REV. NO. 7

FILE NAME: /-/-  
DATE: /-/-



Clement St at 12<sup>th</sup> Ave, westbound bus zone.



Clement St at 12<sup>th</sup> Ave, eastbound bus zone.

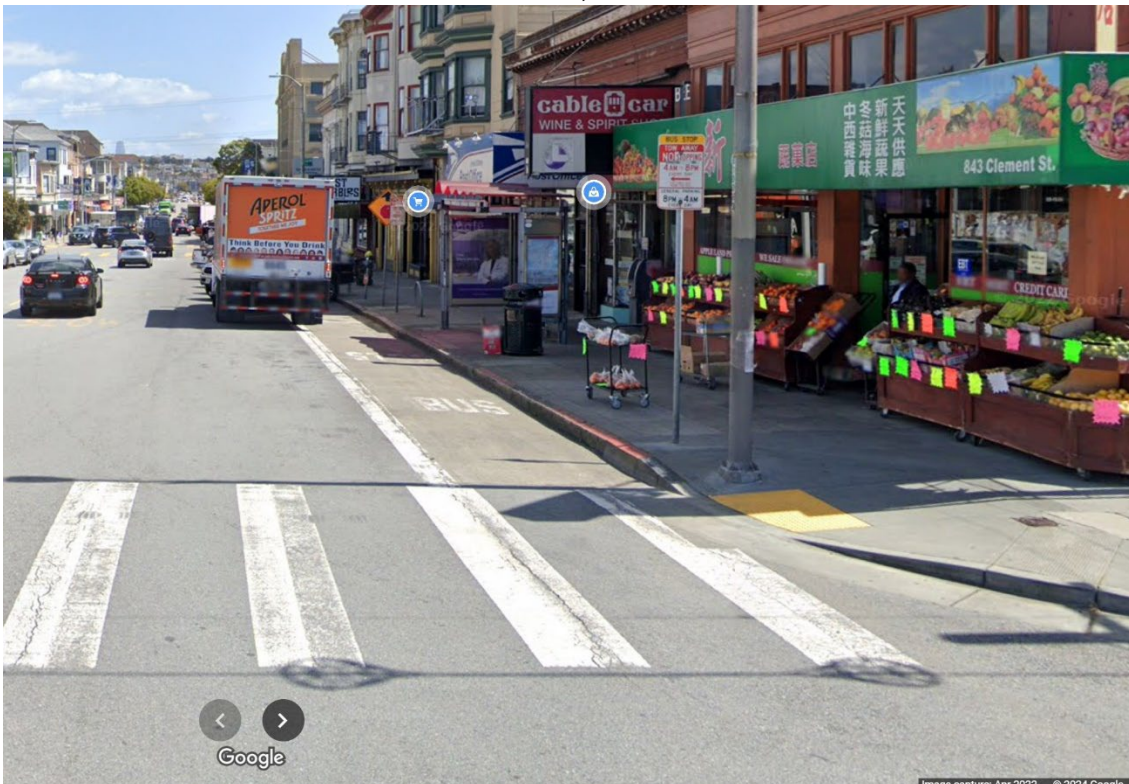




Clement St and 10<sup>th</sup> Ave, westbound bus zone.

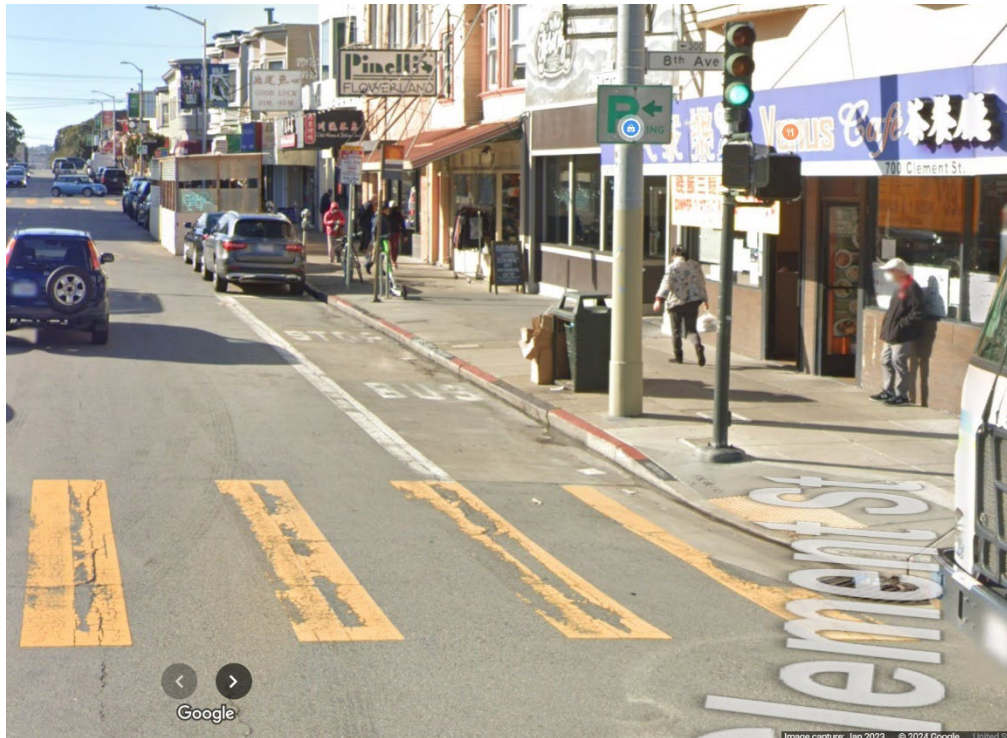


Clement St and 10<sup>th</sup> Ave, eastbound bus zone.

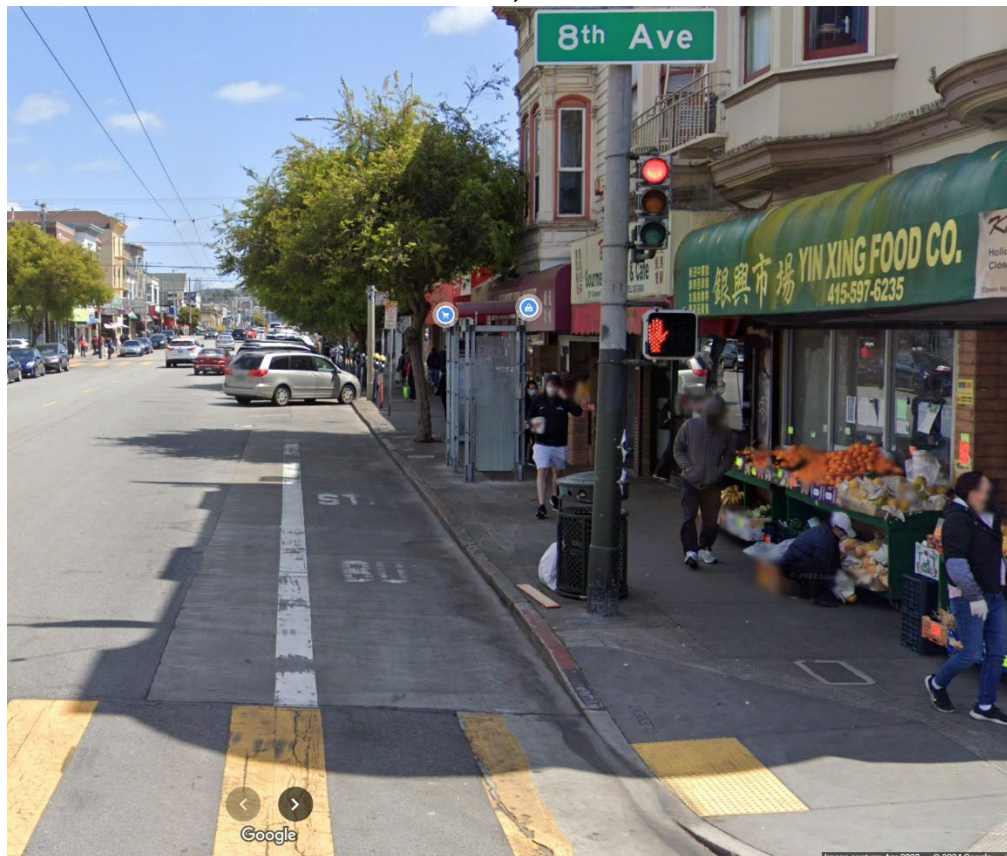




Clement St and 8<sup>th</sup> Ave, westbound bus zone.

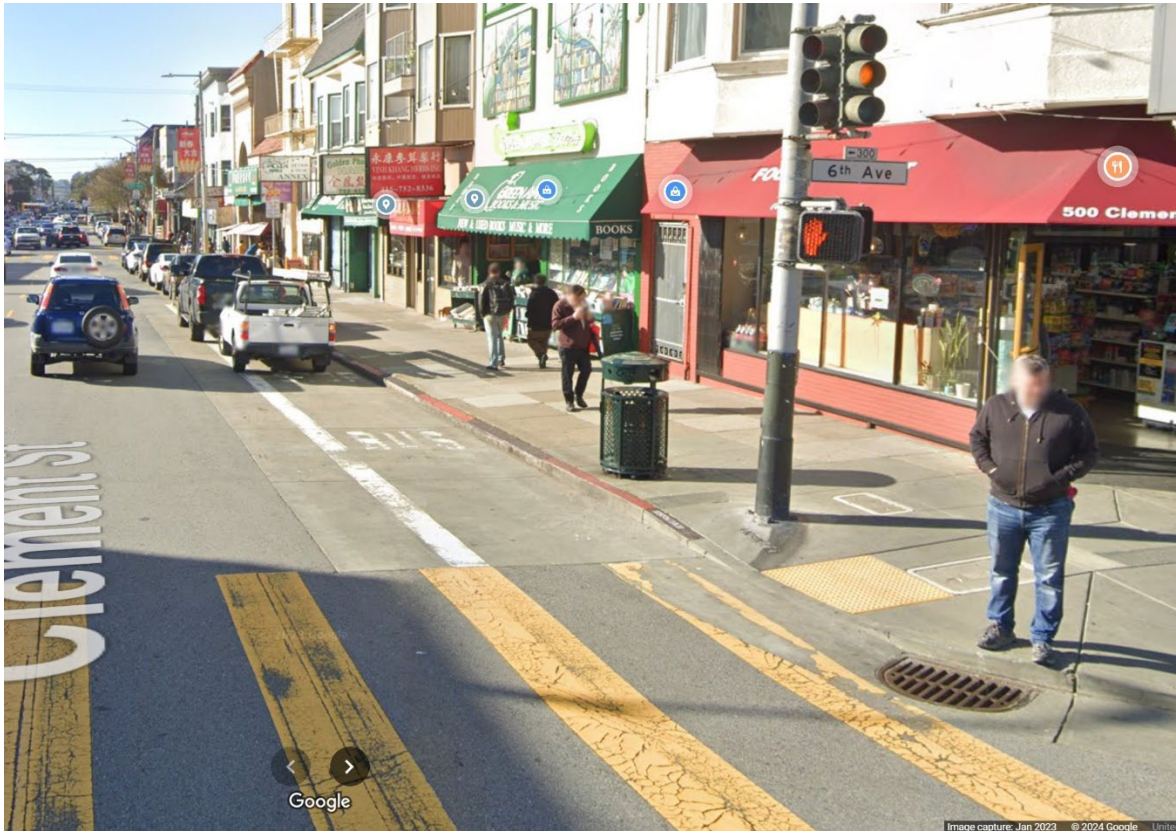


Clement St and 8<sup>th</sup> Ave, eastbound bus zone.

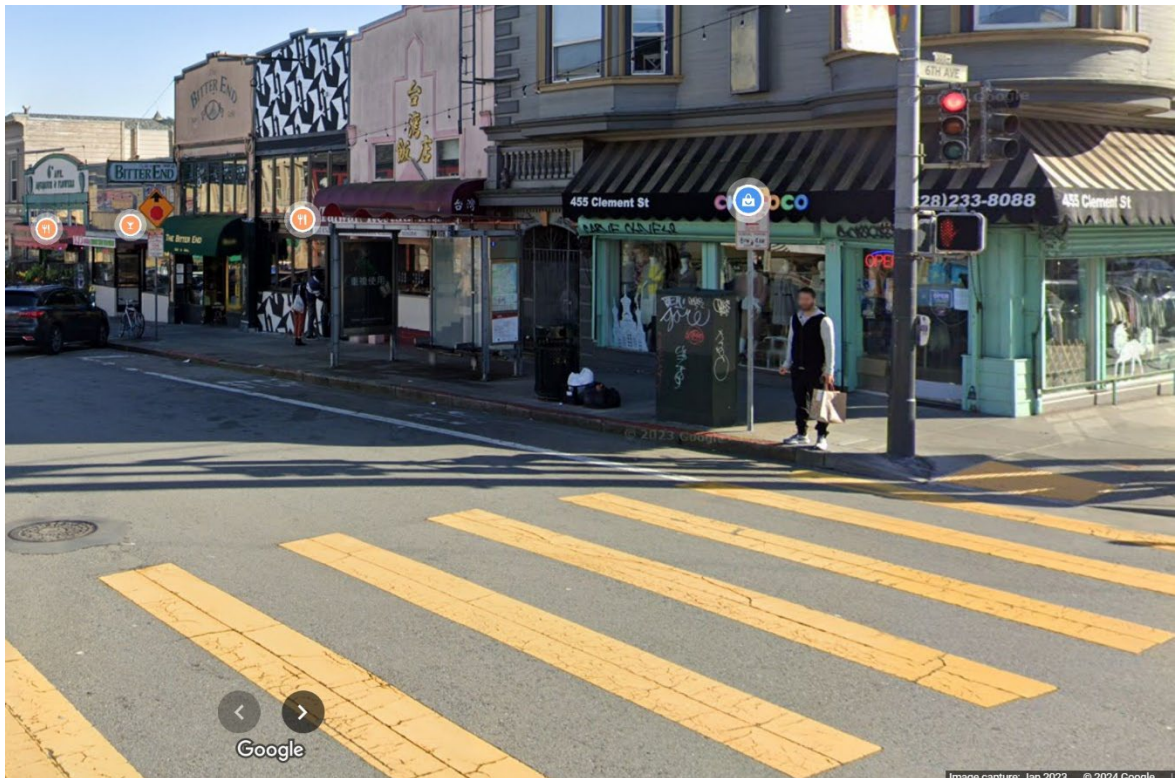




Clement St and 6<sup>th</sup> Ave, westbound bus zone.

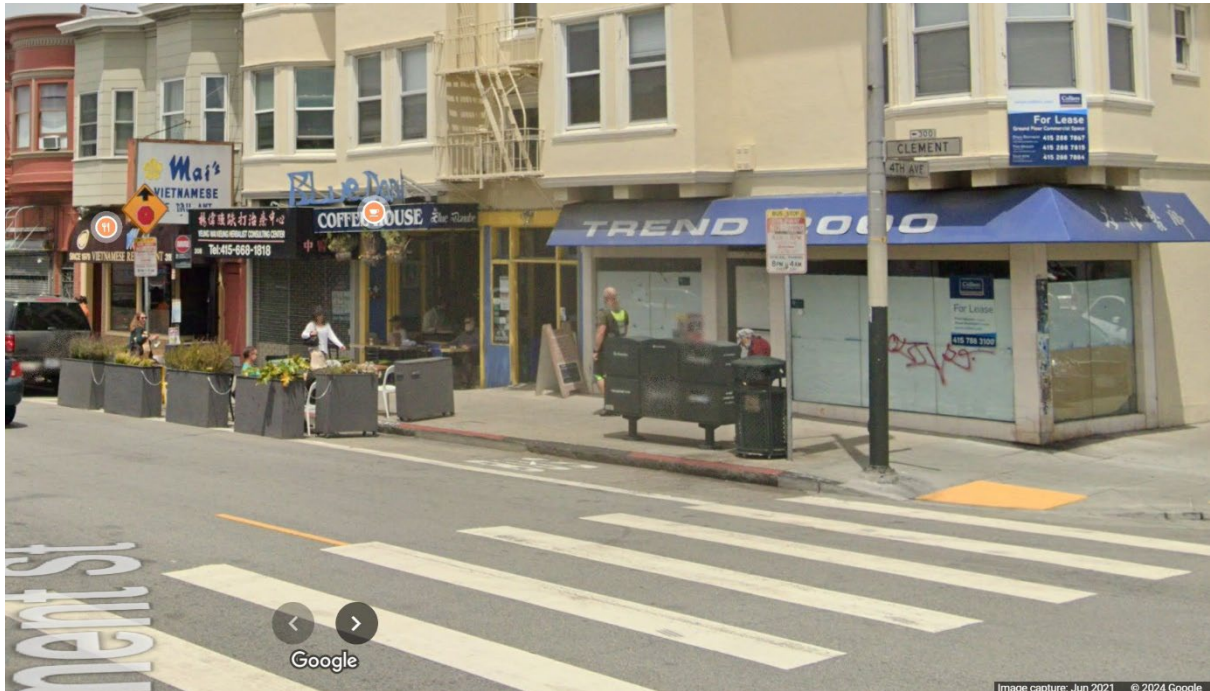


Clement St and 6<sup>th</sup> Ave, eastbound bus zone.

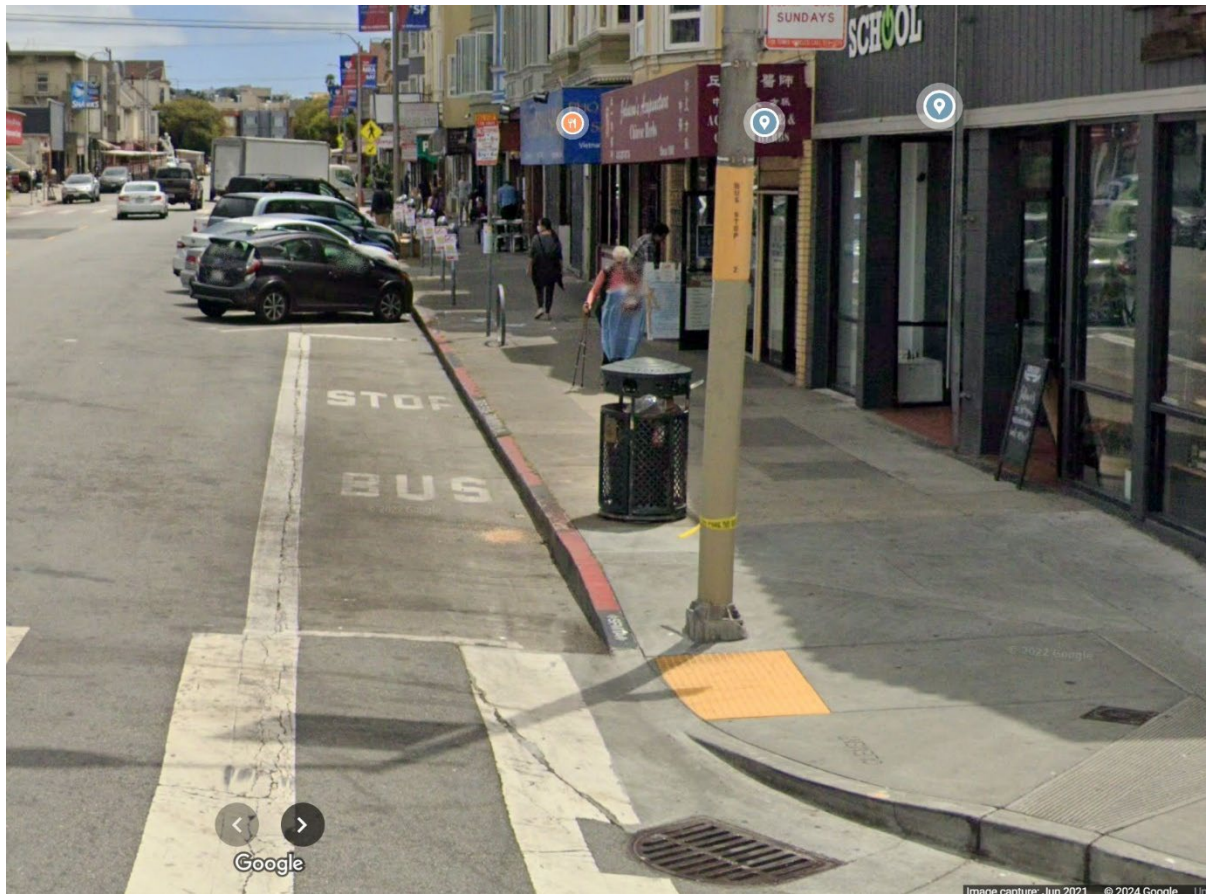




Clement St and 4<sup>th</sup> Ave, westbound bus zone.

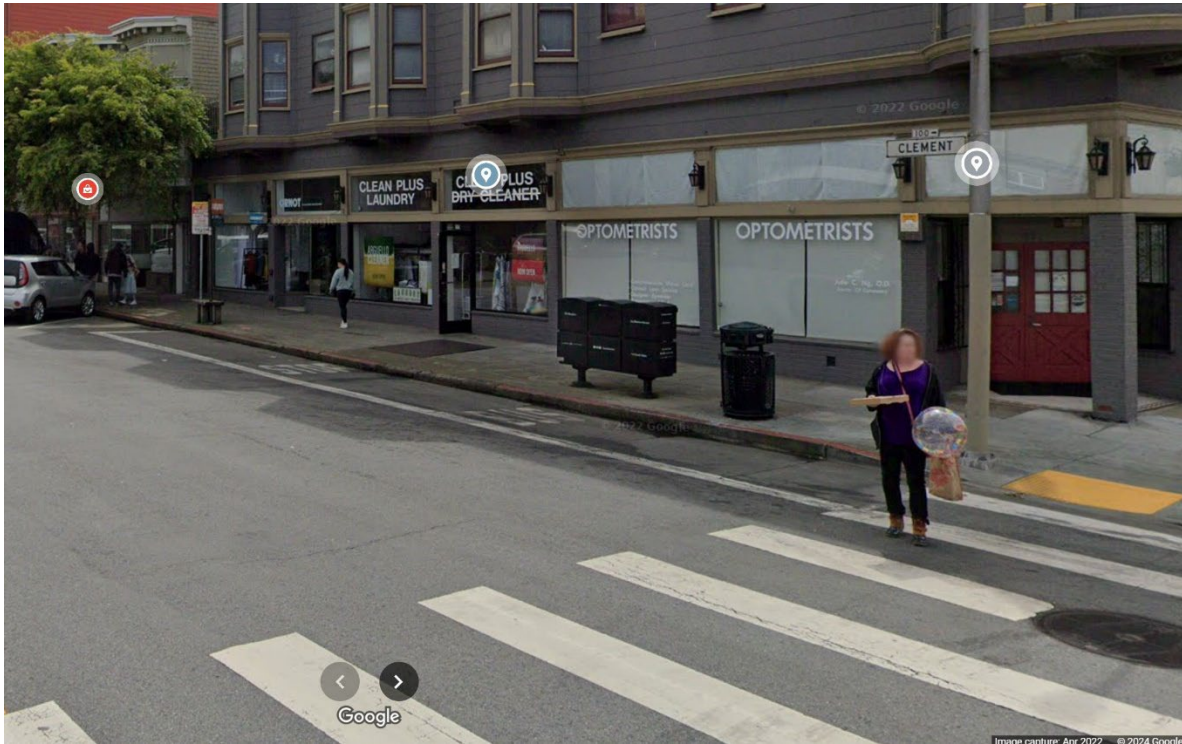


Clement St and 4<sup>th</sup> Ave, eastbound bus zone.





Clement St and 2<sup>nd</sup> Ave, eastbound bus zone.



Clement St and Arguello Blvd, westbound bus zone.

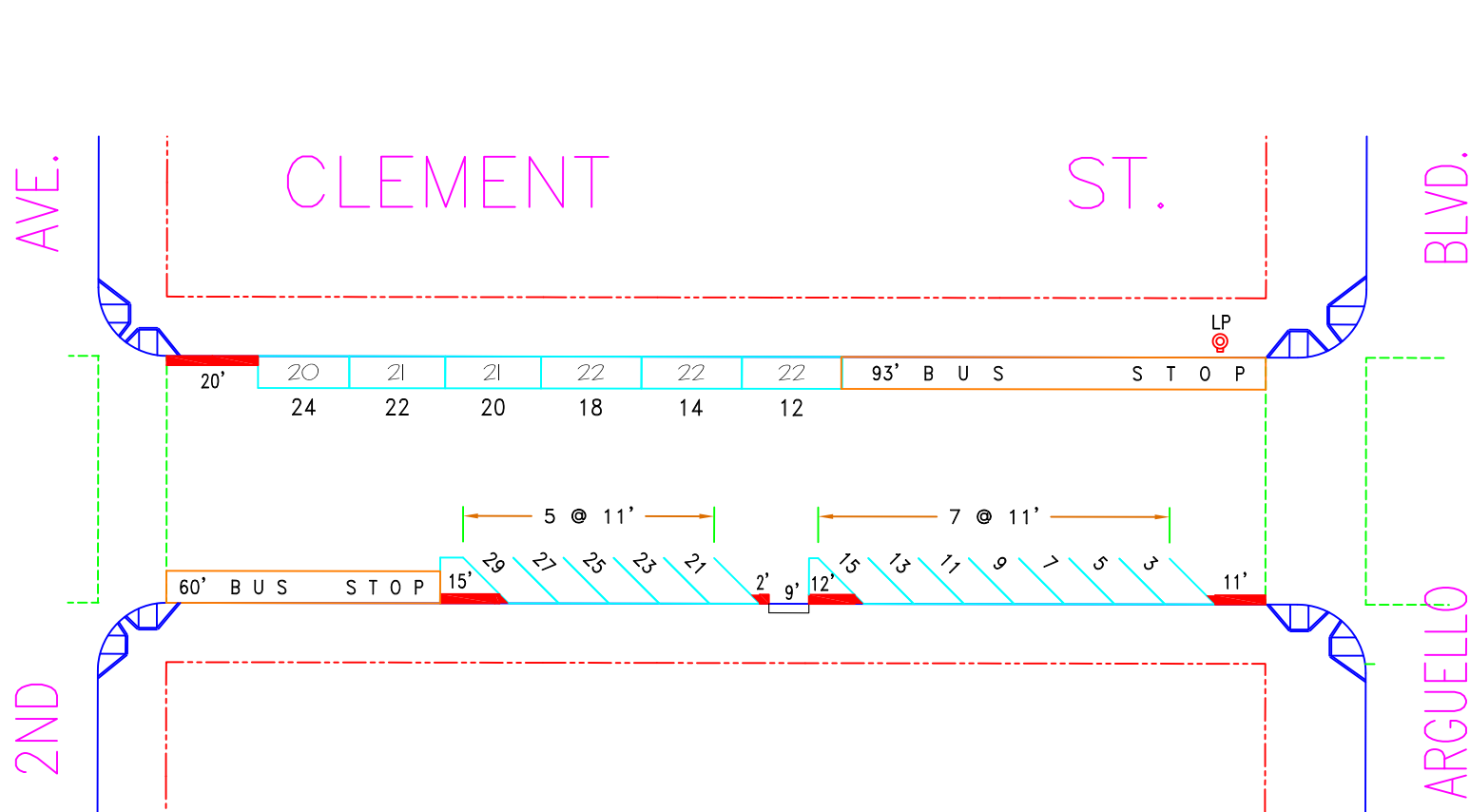





KIRKLAND		T		LINE 2		INBOUND		
C		Y		T		STOP		
/		P		P		ID		<-----NOTES----->
STREETS	I LOC	E	LEN	P	DIST	SIGN		
A CLMT14AV	NS SW BZ	120	*	0.00		17543		
A CLMT12AV	NS SW BZ	65		0.11		14048		
A CLMT10AV	FS SE BZ	65		0.12		14046		
A CLMT 8AV	FS SE BZ	85		0.11		14044		
A CLMT 6AV	FS SE BZ	60		0.10		14043		
A CLMT 4AV	FS SE BZ	60		0.11		14041		
A CLMT 2AV	FS SE BZ	60		0.12		14039		
A ARGLECLD	NS SE BZ	100		0.08		13647		
A CALIARGL	FS SE BZ	75		0.14		13846		
A CALICHRY	FS SE BZ	75		0.14		13853		
A CALISPRC	FS SE BB	65		0.16		13897		
A CALILARL	FS SE BB	70		0.18		13876		
*****								
A CALIPRES	NS SW BZ	100	*	0.00		13893		TC short-line
*****								
A CALIPRES	NS SW BZ	100	*	0.17		13893		relief pt
A SUTTPRES	FS SE BZ	100		0.22		16605		
A SUTTBAKR	NS SW BZ	75		0.14		16586		
A SUTTDIVI	FS SE BZ	120		0.20		16590		
A SUTTSCOT	NS SW BZ	75		0.06		16608		
A SUTTSTEI	NS SW BZ	75		0.18		16610		
A SUTTFILL	FS SE BZ	95	*	0.12		16592		
A SUTTBUCH	FS SE BZ	75		0.18		16588		
A SUTTLGNA	NS SW BZ	105		0.07		16600		
A POSTLGNA	FS SE BZ	125		0.09		16018		
A POSTOCTA	NS SW BZ	75		0.06		16020		
A POSTGOUG	FS SE BB	50		0.09		16124		
A POSTV N	FS SE BZ	110		0.22		16024		
A POSTPOLK	FS SE BZ	115	*	0.08		16021		
A POSTLARK	FS SE BZ	110		0.09		16016		
A POSTHYDE	FS SE BZ	75		0.08		16126		
A POSTLEAV	FS SE BZ	85		0.09		16017		
A POSTJONE	FS SE BZ	80		0.09		16127		
A POSTTAYL	FS SE BZ	80		0.09		16023		
A POSTPOWL	FS SE SI	100	*	0.18		16022		
A POSTGRNT	MB S BB	80		0.11		16125		
A POSTMTGY	MB S BB	60		0.17		16019		
*****								
A MRKT 1ST C	NS S BZ	120		0.24		15638		
A MISSFRMT	NS S SI	110		0.22		17945		
MISSMAIN	FS SE BZ	100		0.14		17759		MC only
*****								
A MRKT 1ST I	NS S SI	100		0.24		17264		TC only
A MRKTBEAL C	FS E BZ	120		0.18		15658		TC only
A SPERMKT	FS S BB	60		0.12		16475		TC only
A STEUTERM	MB NE BZ	235	*	0.22		16497		TC Drop-off only

KIRKLAND		T			LINE 2	OUTBOUND		
C		Y				STOP		
/		P			T	ID		
STREETS	I	LOC	E	LEN	P	DIST	SIGN	NOTES
MISSMAIN		FS SE	BZ	100		0.00		17759
A STEUMRKT		NS E	BZ	57		0.23		16501
*****								
A STEUTERM		MB NE	BZ	235	*	0.00		16497 2 TC Layover, no passengers
A STEUMRKT		NS E	BZ	57		0.06		16501
A MRKTDRUM	C	NS N	BZ	110		0.11		15669
A MRKTFRNT	C	NS N	BZ	110		0.15		15671
A SUTTSANS		FS NW	BZ	220	*	0.22		16606
A SUTTKRNY		FS NW	BZ	200		0.17		16596
A SUTTSTOK		FS NW	BB	66		0.14		16611
A SUTTPOWL		FS NW	BZ	100	*	0.09		16604
A SUTTMASN		FS NW	BZ	75		0.09		16601
A SUTTTAYL		FS NW	BZ	75		0.09		16612
A SUTTJONE		FS NW	BZ	75		0.09		16595
A SUTTLEAV		FS NW	BZ	75		0.09		16598
A SUTTHYDE		FS NW	BZ	75		0.09		16594
A SUTTLARK		FS NW	BZ	80		0.09		16597
A SUTTPOLK		FS NW	BZ	100	*	0.10		16603
A SUTTV N		NS NE	BZ	120		0.06		16613
A SUTTGOUG		NS NE	BZ	40		0.19		16593
A SUTTOCTA		FS NW	BZ	75		0.12		16602
A SUTTLGNA		FS NW	BZ	75		0.09		16599
A SUTTBUCH		NS NE	BZ	75		0.07		16587
A SUTTFILL		NS NE	BZ	135	*	0.18		16591
A SUTTSTEI		NS NE	BZ	75		0.09		16609
A SUTTSCOT		NS NE	BZ	75		0.18		16607
A SUTTDIVI		NS NE	BZ	80		0.09		16589
A SUTTBAKR		NS NE	BZ	75		0.19		16585
A PRESSUTT		FS NE	PS	0		0.18		16098
A PRESPINE		NS SE	PS	0		0.11		16096
A CALIPRES		FS NW	BZ	100	*	0.09		13892
A CALILARL		NS NE	BZ	75		0.15		13875
A CALISPRC		NS NE	BZ	70		0.18		13896
A CALIMAPL		FS NW	BZ	90		0.12		13879
A CALICHRY		FS NW	BZ	55		0.09		13852
A ARGLCALI		FS SW	BZ	75		0.15		13644
A CLEMARGL		FS NW	BZ	99		0.18		17250
A CLMT 4AV		FS NW	BZ	55		0.17		14040
A CLMT 6AV		FS NW	BZ	77		0.12		14042
A CLMT 8AV		FS NW	BZ	60		0.09		17019
A CLMT10AV		FS NW	BZ	60		0.12		14045
A CLMT12AV		FS NW	BZ	60		0.11		14047
A CLMT14AV		NS SW	BZ	120	*	0.30		17543

# EXISTING



NO.	REVISION DESCRIPTION				BY	DATE	DIR/RES											
	TOW-AWAY	METER CT.	GENERAL															LOADING
SIDE	AM	PM	SS	MS	GMP	MC	TIMES	DAYS	ML	MTL	6-W	15 MIN	30 MIN	1 HR	2 HR	10 HR	TOTAL	
1	MOS #26 for Redzone - N/S				JB	2/2/09												
2	Establish Red zone, MOS#1 - S/S				JB	9/6/22	6487											
ODD			12		12		9A-6P	M-SA							12			12
EVEN			6		6		9A-6P	M-SA							6			6



**SAN FRANCISCO MUNICIPAL TRANSPORTATION AGENCY**  
**CITY AND COUNTY OF SAN FRANCISCO**  
 PARKING METER SPACES

**CLEMENT ST. (CLE, 360)**  
**(UNIT) BLOCK**  
 Meters # 360-00XXy

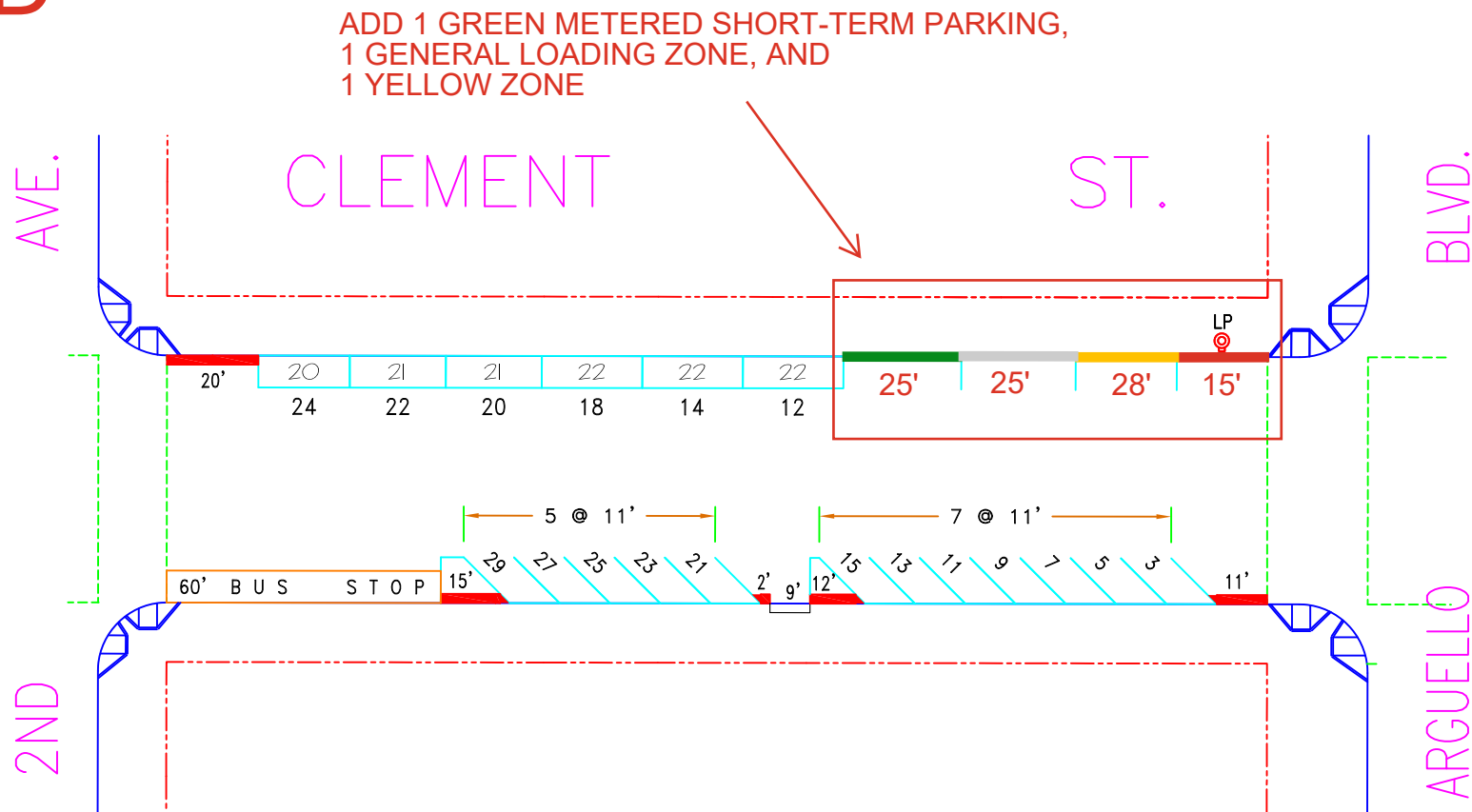
**ARGUELLO BLVD. TO 2ND AVE.**

**AREA**  
**3**


SCALE: **1" = 40'**      DATE: **9/6/22**      BY: **JB**

# PROPOSED

ADD 1 GREEN METERED SHORT-TERM PARKING,  
1 GENERAL LOADING ZONE, AND  
1 YELLOW ZONE



NO.	REVISION DESCRIPTION				BY	DATE	DIR/RES											
	TOW-AWAY	METER CT.		GENERAL														LOADING
SIDE	AM	PM	SS	MS	GMP	MC	TIMES	DAYS	ML	MTL	6-W	15 MIN	30 MIN	1 HR	2 HR	10 HR	TOTAL	
1	MOS #26 for Redzone - N/S				JB	2/2/09												
2	Establish Red zone, MOS#1 - S/S				JB	9/6/22	6487											
ODD			12		12		9A-6P	M-SA							12			12
EVEN			6		6		9A-6P	M-SA							6			6



**SAN FRANCISCO MUNICIPAL TRANSPORTATION AGENCY**  
CITY AND COUNTY OF SAN FRANCISCO  
PARKING METER SPACES

**CLEMENT ST. (CLE, 360)**  
**(UNIT) BLOCK**  
Meters # 360-00XXy

**ARGUELLO BLVD. TO 2ND AVE.**

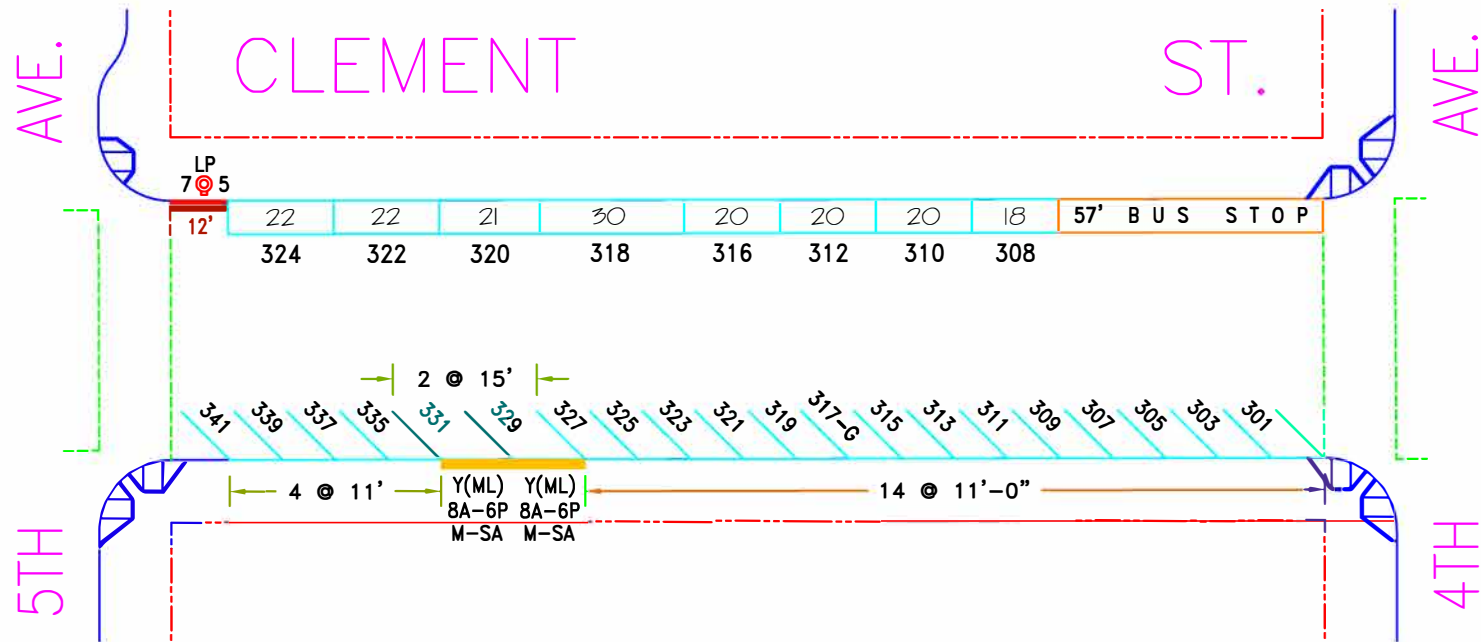
**AREA**  
**3**

SCALE: **1" = 40'**

DATE: **9/6/22**

BY: **JB**

# EXISTING



NO.	REVISION DESCRIPTION	BY	DATE	DIR/RES													
1	GMP, 2 Hr. time limit		1/23/08	528-07													
2	Revoke PT-PLZ #318	JB	7/8/13	5114													



SAN FRANCISCO MUNICIPAL TRANSPORTATION AGENCY  
CITY AND COUNTY OF SAN FRANCISCO  
PARKING METER SPACES

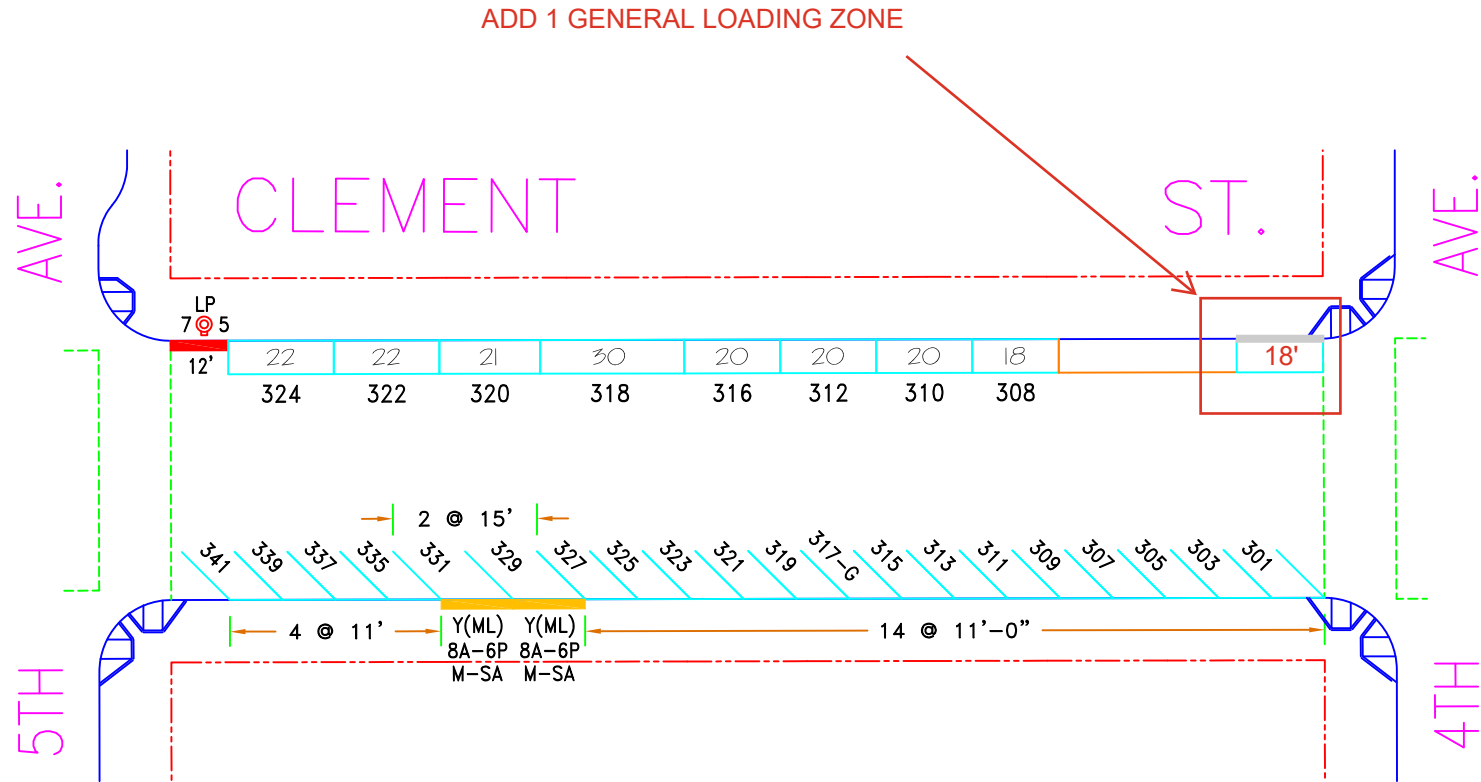
SIDE	TOW-AWAY		METER CT.		GENERAL				LOADING		METERED SPACES						TOTAL
	AM	PM	SS	MS	GMP	MC	TIMES	DAYS	ML	MTL	6-W	15 MIN	30 MIN	1 HR	2 HR	10 HR	
ODD			20		18		9A-6P	M-SA	2				3		17		20
EVEN			8		8		9A-6P	M-SA							8		8

**CLEMENT ST. (CLE, 360)**  
**(300) BLOCK**  
Meters # 360-03XXY  
4TH AVE. TO 5TH AVE.


SCALE: 1"=40'      DATE: 7/8/13      BY: JB

AREA  
**3**

# PROPOSED



NO.	REVISION DESCRIPTION	BY	DATE	DIR/RES														
1	GMP, 2 Hr. time limit		1/23/08	528-07														
2	Revoke PT-PLZ #318	JB	7/8/13	5114														


**SAN FRANCISCO MUNICIPAL TRANSPORTATION AGENCY**  
 CITY AND COUNTY OF SAN FRANCISCO  
 PARKING METER SPACES

SIDE	TOW-AWAY		METER CT.		GENERAL				LOADING			METERED SPACES							TOTAL
	AM	PM	SS	MS	GMP	MC	TIMES	DAYS	ML	MTL	6-W	15 MIN	30 MIN	1 HR	2 HR	10 HR			
ODD			20		18		9A-6P	M-SA	2				3		17		20		
EVEN			8		8		9A-6P	M-SA							8		8		

**CLEMENT ST. (CLE, 360)**  
**(300) BLOCK**  
 Meters # 360-03XXY  
 4TH AVE. TO 5TH AVE.

**AREA**  
**3**

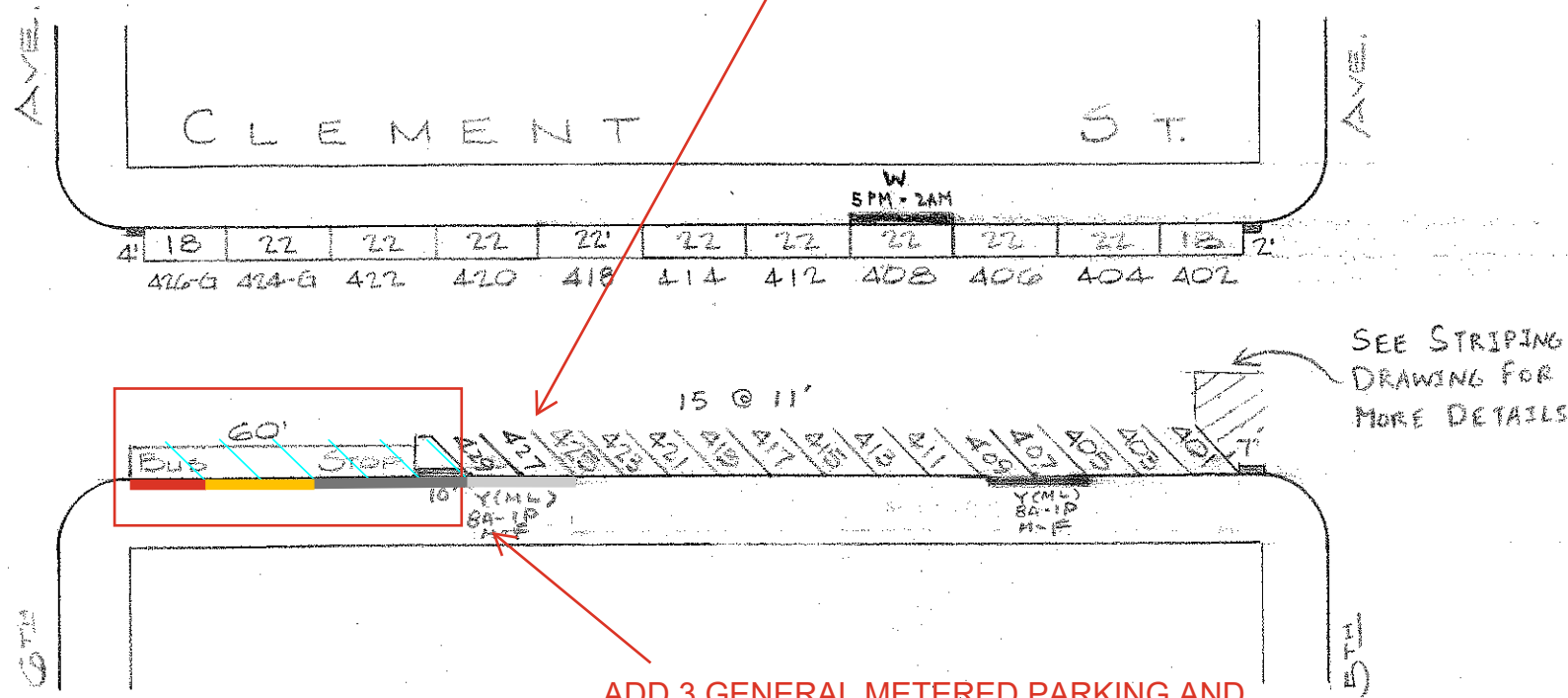
SCALE: **1"=40'**      DATE: **7/8/13**      BY: **JB**





# PROPOSED

CONVERT #429, 427 TO GENERAL LOADING ZONES



ADD 3 GENERAL METERED PARKING AND 2 LOADING ANGLED ZONES @ 12'

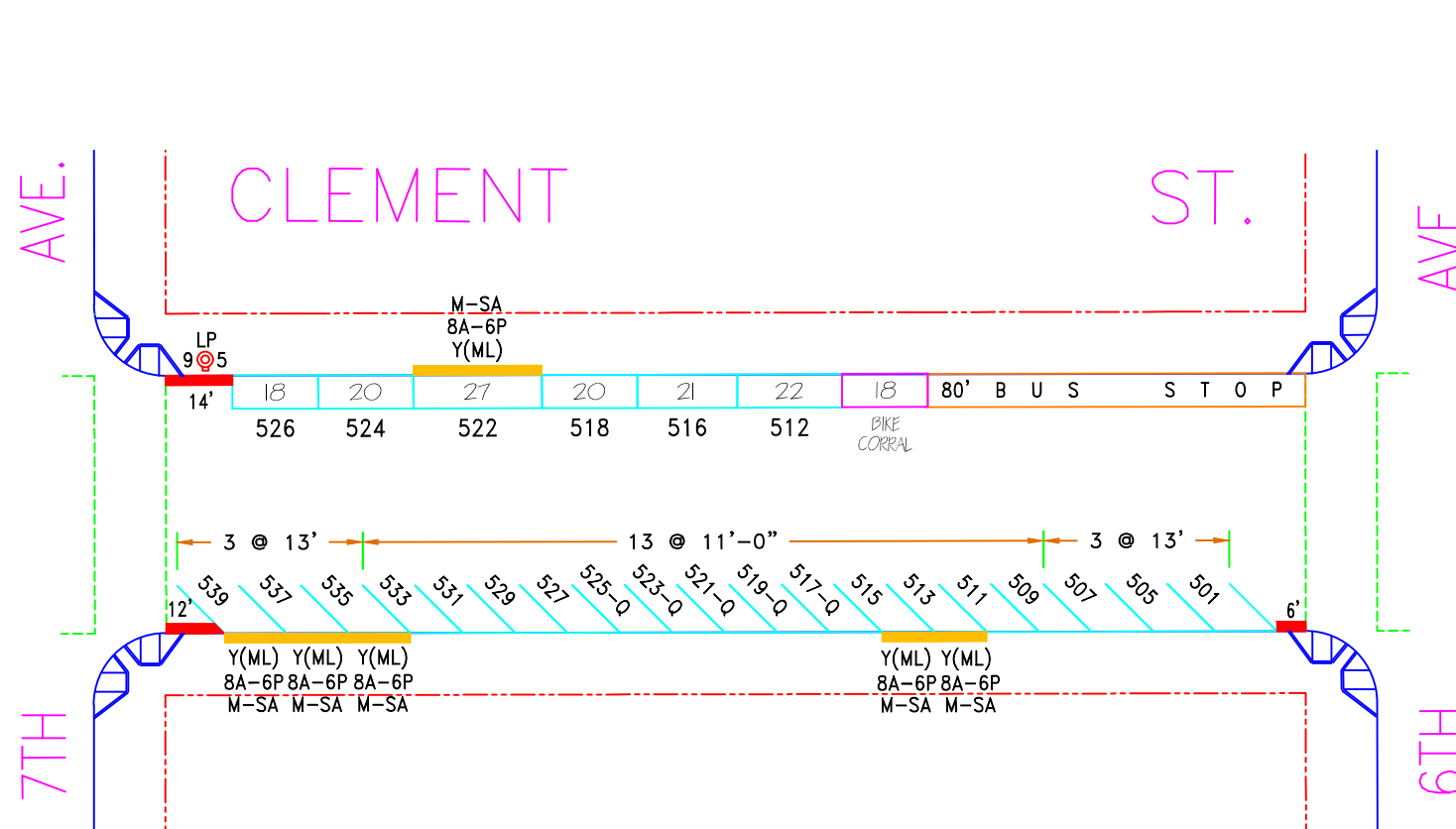
ADD STRIPING AT 5<sup>TH</sup> AVE 9-21-11  
 Change # 418 to GMP 8-30-05 Dir. # 3045  
 GMP 2-Hour Time Limit 1-23-08 Res. 528-07

2 HRS.


CITY AND COUNTY OF SAN FRANCISCO - D. P. T.  
**PARKING METER SPACES**

TOWAWAY ZONE				REGULAR					SPECIAL TRUCK LOAD.			NUMBER OF METERED SPACES					SCALE	CLEMENT ST. (400)	AREA	
HOUR	7A-9A	4P-6P	7A-6P	8A-6P	7A-4P	7A-6P	9A-4P	9A-6P	TOTAL	1P-4P	1P-6P	TOTAL	15 Min.	30 Min.	1 Hour	2 Hour	TOTAL			40
SIDE				4				22	26					6		20	26	EM 7.75	5 <sup>TH</sup> TO 6 <sup>TH</sup> AVENUES	3

# EXISTING



NO.	REVISION DESCRIPTION	BY	DATE	DIR/RES														
3	Establish ML on #513,515 - S/S	JB	5/20/20	6213														


**SAN FRANCISCO MUNICIPAL TRANSPORTATION AGENCY**  
 CITY AND COUNTY OF SAN FRANCISCO  
 PARKING METER SPACES

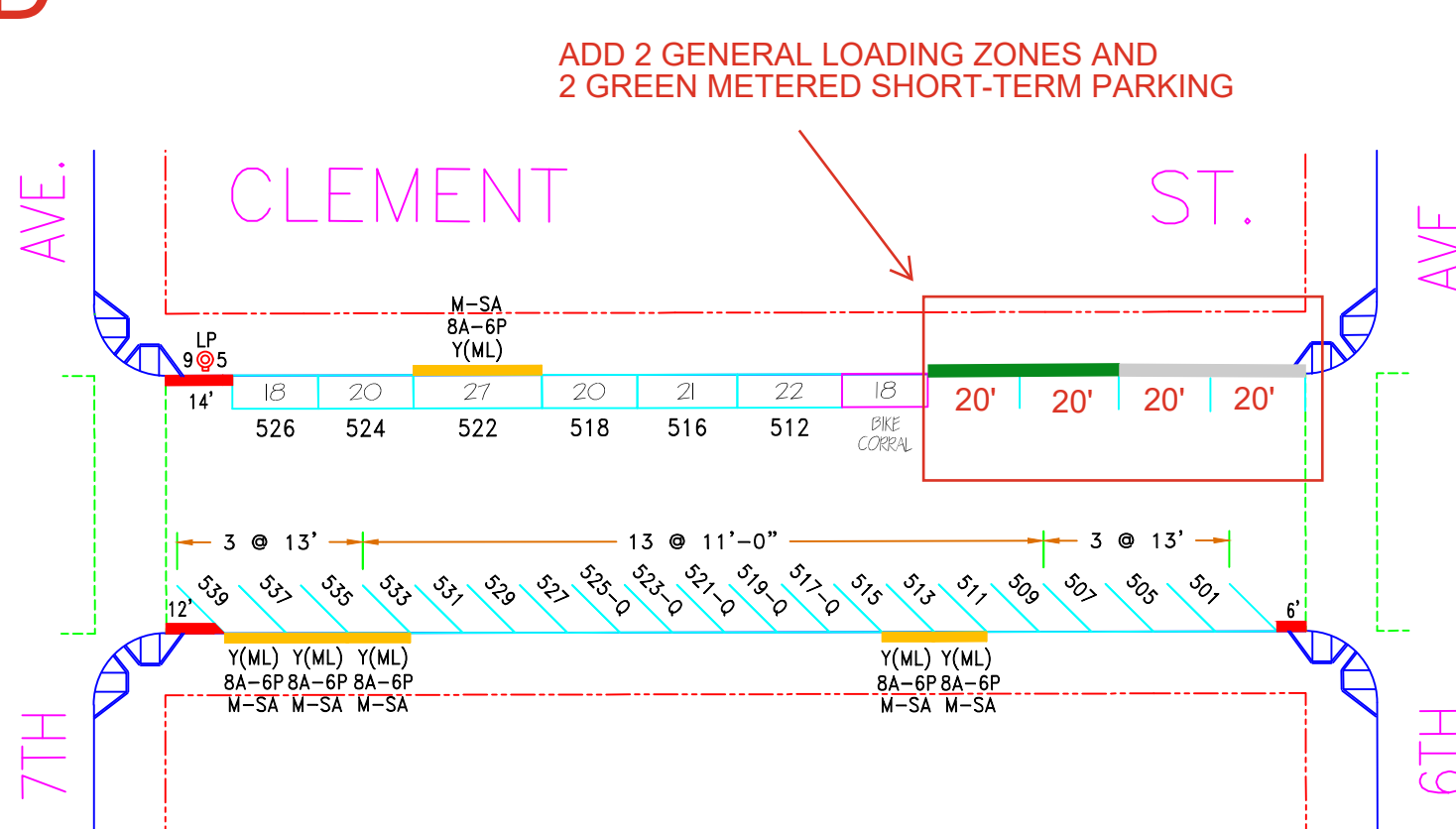
SIDE	TOW-AWAY		METER CT.		GENERAL			LOADING			METERED SPACES						TOTAL
	AM	PM	SS	MS	GMP	MC	TIMES	DAYS	ML	MTL	6-W	15 MIN	30 MIN	1 HR	2 HR	10 HR	
ODD			19		14		9A-6P	M-SA	5			5	5		9		19
EVEN			6		5		9A-6P	M-SA	1				1		5		6

**CLEMENT ST. (CLE, 360)**  
**(500) BLOCK**  
 Meters # 360-05XXy  
**6TH AVE. TO 7TH AVE.**


SCALE: **1" = 40'**      DATE: **5/20/20**      BY: **JB**

**AREA 3**

# PROPOSED



NO.	REVISION DESCRIPTION	BY	DATE	DIR/RES													
3	Establish ML on #513,515 - S/S	JB	5/20/20	6213													



**SAN FRANCISCO MUNICIPAL TRANSPORTATION AGENCY**  
**CITY AND COUNTY OF SAN FRANCISCO**  
 PARKING METER SPACES

SIDE	TOW-AWAY		METER CT.		GENERAL			LOADING			METERED SPACES						TOTAL
	AM	PM	SS	MS	GMP	MC	TIMES	DAYS	ML	MTL	6-W	15 MIN	30 MIN	1 HR	2 HR	10 HR	
ODD			19		14		9A-6P	M-SA	5			5	5		9		19
EVEN			6		5		9A-6P	M-SA	1				1		5		6

**CLEMMENT ST. (CLE, 360)**  
**(500) BLOCK**  
 Meters # 360-05XXy

**6TH AVE. TO 7TH AVE.**

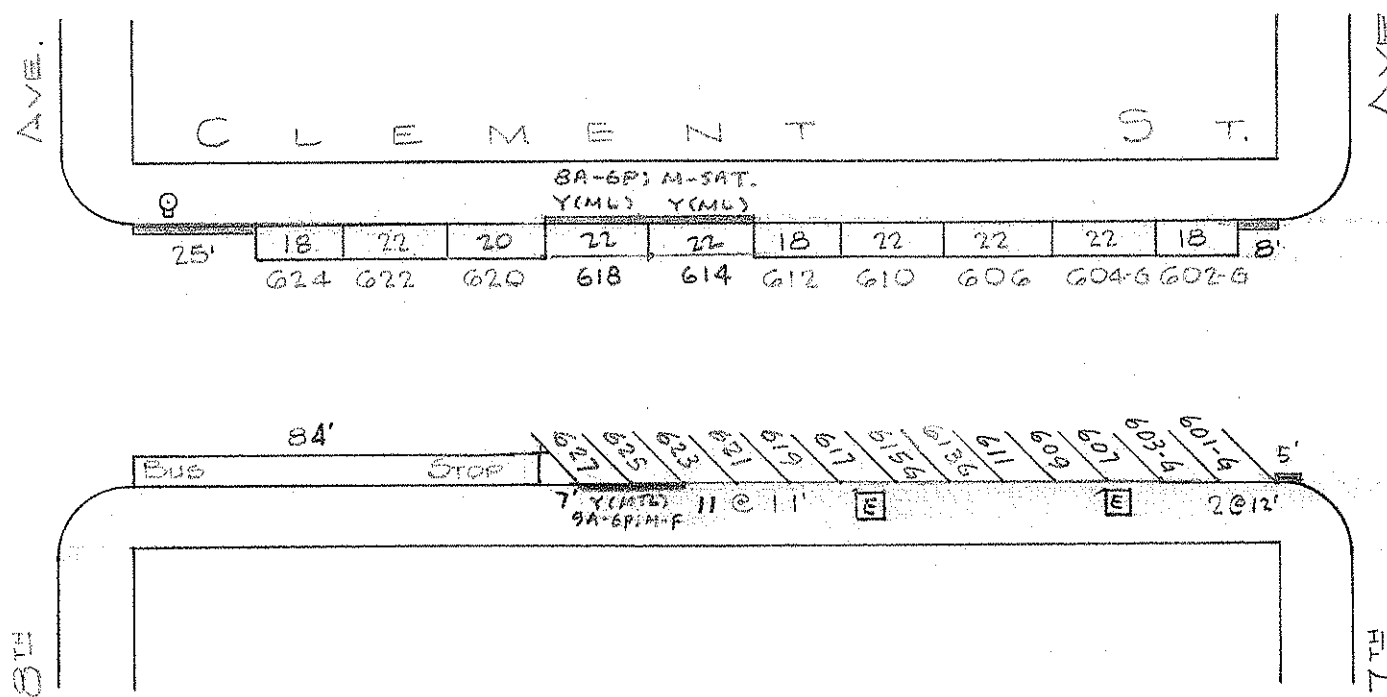
SCALE: **1" = 40'**

DATE: **5/20/20**

BY: **JB**

**AREA**  
**3**

# EXISTING



2 HRS.

GMP 2-Hour Time Limit 1-23-08 Res. 528-07  
 Change # 613, 615 to 30min B-3-94

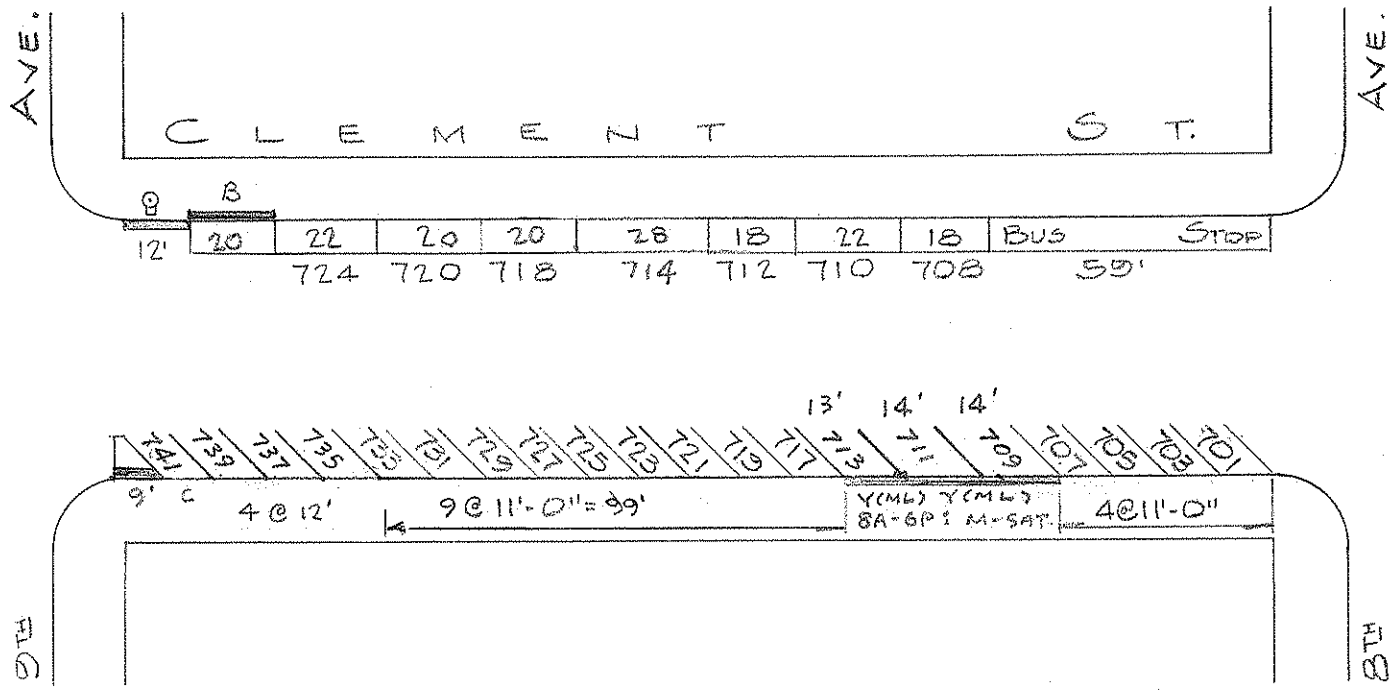
CITY AND COUNTY OF SAN FRANCISCO - D. P. T.  
**PARKING METER SPACES**

TOWAWAY ZONE				REGULAR					SPECIAL TRUCK LOAD			NUMBER OF METERED SPACES					SCALE	AREA	
HOUR	7A-9A	4P-6P	7A-6P	8A-6P	7A-4P	7A-6P	9A-4P	9A-6P	TOTAL	1P-4P	1P-6P	TOTAL	15 Min.	30 Min.	1 Hour	2 Hour	TOTAL	40 EM FTS	CLEMENT ST. (600) 7 <sup>TH</sup> TO 8 <sup>TH</sup> AVENUES
SIDE				2				21	23					10		13	23		3





# EXISTING



2 HRS.

Change # 714 to GMP 8-30-05 Dir. 3045  
 GMP 2-Hour Time Limit 1-23-08 Res. 528-07

C - Compact car

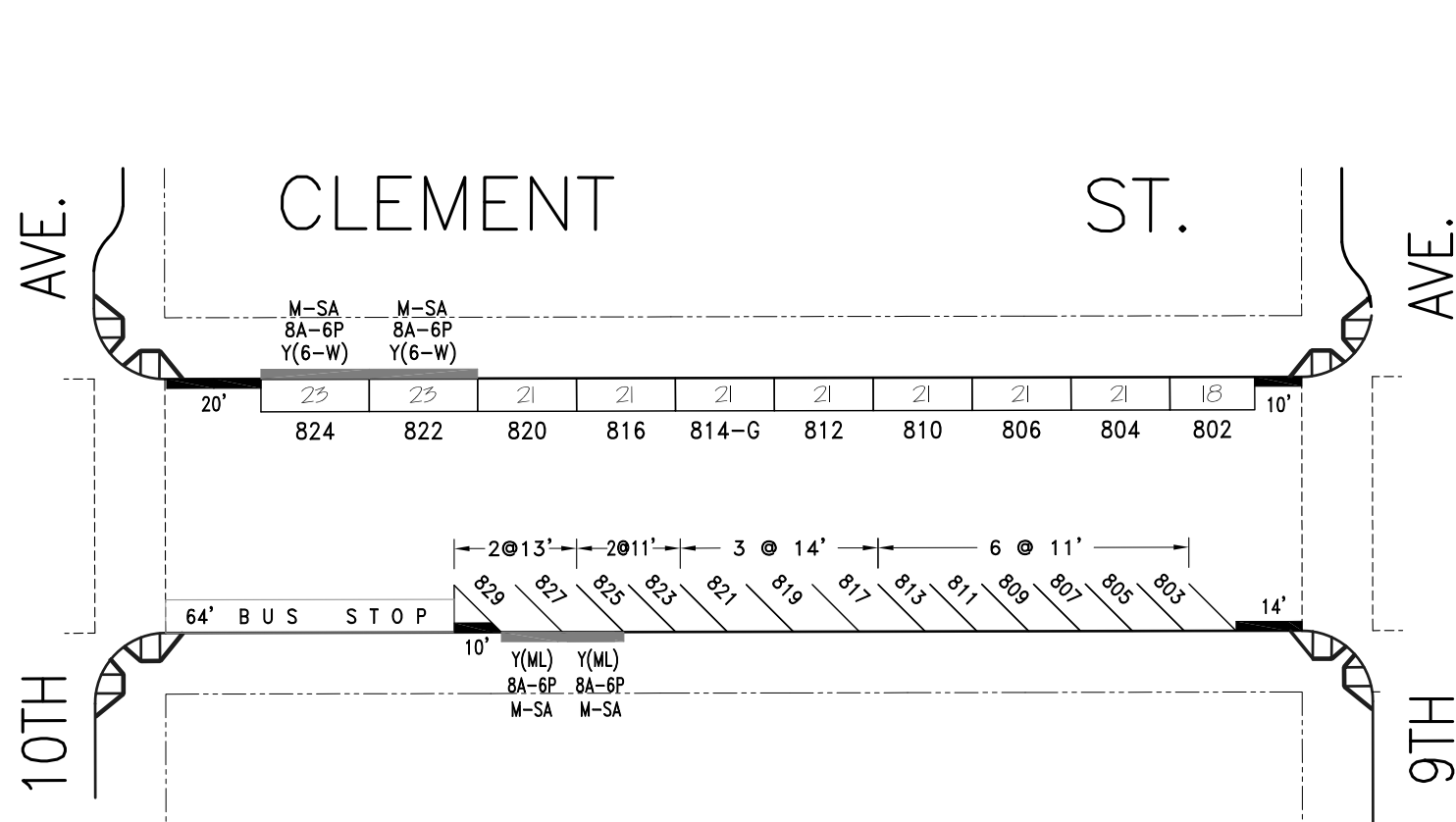
CITY AND COUNTY OF SAN FRANCISCO - D. P. T.  
**PARKING METER SPACES**

TOWAWAY ZONE				REGULAR					SPECIAL TRUCK LOAD			NUMBER OF METERED SPACES					SCALE	CLEMENT ST. (700)	AREA
HOUR	7A-9A	4P-6P	7A-6P	8A-6P	7A-4P	7A-6P	9A-4P	9A-6P	TOTAL	1P-4P	1P-6P	TOTAL	15 Min.	30 Min.	1 Hour	2 Hour	TOTAL		
SIDE				3				24	27						3		24	27	EM
																			2-75
																			3


8<sup>TH</sup> TO 9<sup>TH</sup> AVENUES



# EXISTING



NO.	REVISION DESCRIPTION	BY	DATE	DIR/RES	7	Rescd.6W#810,12,Est.6W#22,24,MOS#26	JB	10/13/23	6641
5	Revoke PT-PLZ on #821 -S/S	JB	6/24/16	5585					
6	Establish Red zone, MOS#801-S/S	JB	11/27/19						


**SAN FRANCISCO MUNICIPAL TRANSPORTATION AGENCY**  
 CITY AND COUNTY OF SAN FRANCISCO  
 PARKING METER SPACES

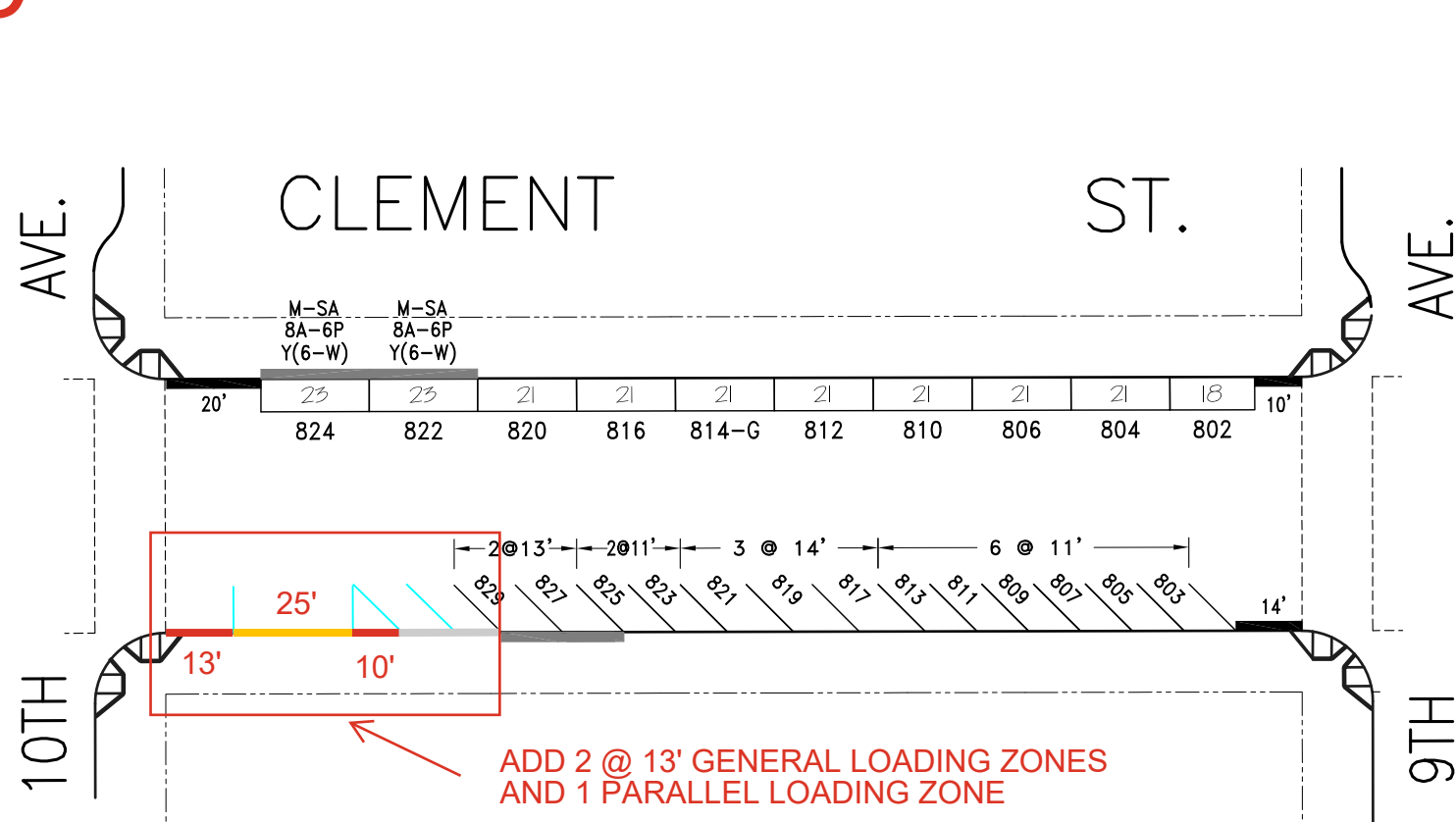
SIDE	TOW-AWAY		METER CT.		GENERAL			LOADING			METERED SPACES						TOTAL
	AM	PM	SS	MS	GMP	MC	TIMES	DAYS	ML	MTL	6-W	15 MIN	30 MIN	1 HR	2 HR	10 HR	
ODD			13		9		9A-6P	M-SA	2				2		11		13
EVEN			10		8		9A-6P	M-SA			2		3		7		10

**CLEMENT ST. (CLE, 360)**  
**(800) BLOCK**  
 Meters # 360-08XXY  
**9TH AVE. TO 10TH AVE.**

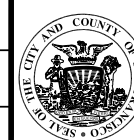
SCALE: **1" = 40'**      DATE: **6/24/16**      BY: **JB**

AREA  
3

# PROPOSED



NO.	REVISION DESCRIPTION	BY	DATE	DIR/RES	7	Rescd.6W#810,12,Est.6W#22,24,MOS#26	JB	10/13/23	6641
5	Revoke PT-PLZ on #821 -S/S	JB	6/24/16	5585					
6	Establish Red zone, MOS#801-S/S	JB	11/27/19						



SAN FRANCISCO MUNICIPAL TRANSPORTATION AGENCY  
CITY AND COUNTY OF SAN FRANCISCO  
PARKING METER SPACES

SIDE	TOW-AWAY		METER CT.		GENERAL			LOADING			METERED SPACES						TOTAL
	AM	PM	SS	MS	GMP	MC	TIMES	DAYS	ML	MTL	6-W	15 MIN	30 MIN	1 HR	2 HR	10 HR	
ODD			13		9		9A-6P	M-SA	2				2		11		13
EVEN			10		8		9A-6P	M-SA			2	3		7		10	

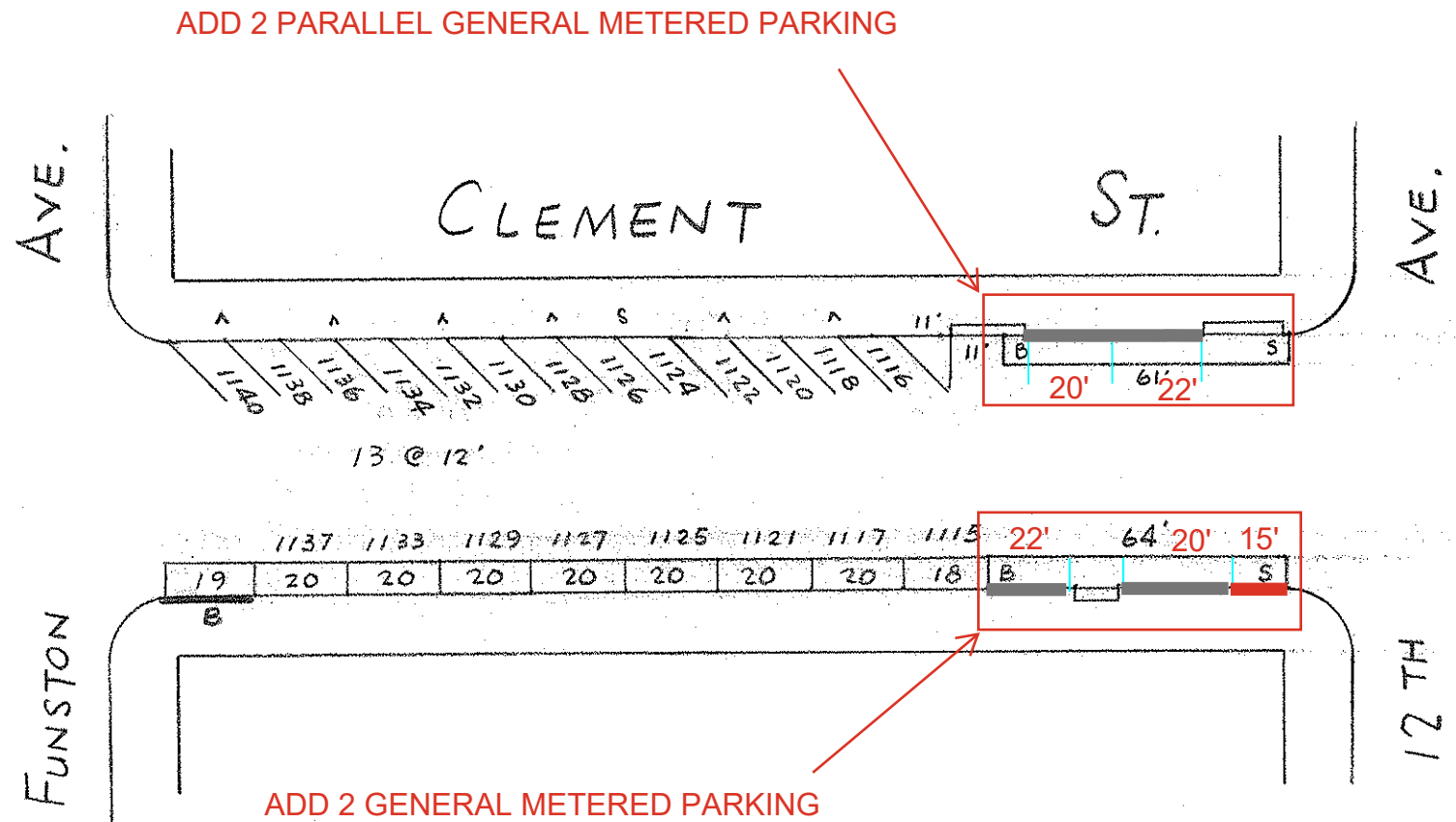
**CLEMENT ST. (CLE, 360)**  
**(800) BLOCK**  
Meters # 360-08XXY  
9TH AVE. TO 10TH AVE.

SCALE: 1"=40'      DATE: 6/24/16      BY: JB

AREA  
**3**



# PROPOSED



GMP 2-Hour Time Limit 1-23-08 Res. 528-07  
 Remove # 1141 6-26-96

✓ TWIN MOUNT S - SINGLE

2 HRS.

CITY AND COUNTY OF SAN FRANCISCO - D. P. T.  
**PARKING METER SPACES**

TOWAWAY ZONE				REGULAR					SPECIAL TRUCK LOAD.			NUMBER OF METERED SPACES					SCALE 40 KK 7.9.86	AREA 3
HOUR	7A-9A	4P-6P	7A-6P	7A-4P	7A-6P	9A-4P	9A-6P	TOTAL	1P-4P	1P-6P	TOTAL	15 Min.	30 Min.	1 Hour	2 Hour	TOTAL		
SIDE							21	21							21	21	CLEMENT ST. (1100) 12 <sup>TH</sup> TO FUNSTON AVE.	