



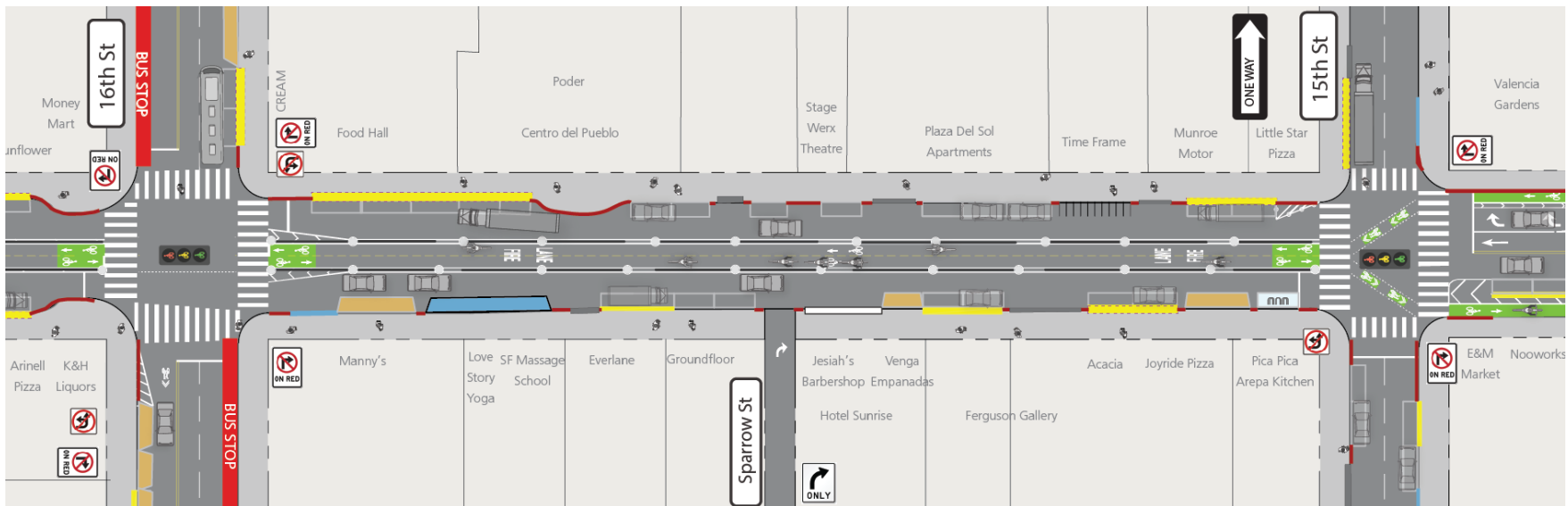
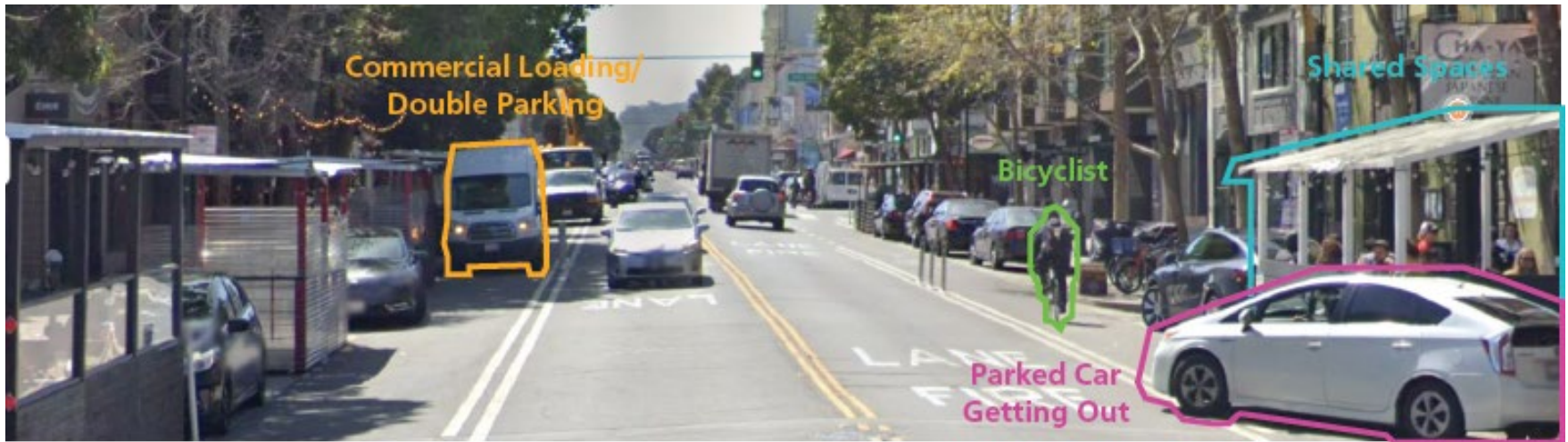
SFMTA

Mid-Valencia Bikeway Pilot Project

SFMTA Community Advisory Committee

June 6, 2024

Project Recap



What We Heard

- Businesses are struggling.
- Customers are confused about where and when they can park.
- Additional loading spaces means fewer customer parking spaces.
- Many businesses use personal vehicles and can't access the commercial loading zones.
- The ability to double park has been significantly reduced.
- Motorists are confused about turn restrictions and generally how to navigate the street.
- Mixed reviews of the center-running protected bike lane in terms of safety – some feel it's significantly more comfortable and safer than before, others feel less safe (e.g., emergency responders speeding in the bike lane).
- Interest from some businesses to revert to pre-Covid bikeway configuration while the SFMTA works on another design.


Center-Running Pilot Improvements

- In November, reallocated loading zones to more general meter parking.
 - 34% of new loading zones converted to general parking after noon.
 - 82% of new loading zones converted to general parking after 6 p.m. (previously ended at 10 p.m.)
 - 34% of 6-wheel loading spaces converted to regular commercial loading spaces.
- Converted multi-space meters back to single-space meters with decals that have clear parking regulation information.
- Distributing posters to businesses that promote and direct customers to SFMTA parking garages at 16th Street and 21st Street
- Adjusted signal timing at the Valencia at 23rd Street and Valencia at 15th Street intersections to reduce traffic congestion
- Worked with SFPD to enforce No Left Turn/U Turn regulations



Next Steps





Thank you!
Questions?

[SFMTA.com/Valencia](https://www.sfmta.com/Valencia)