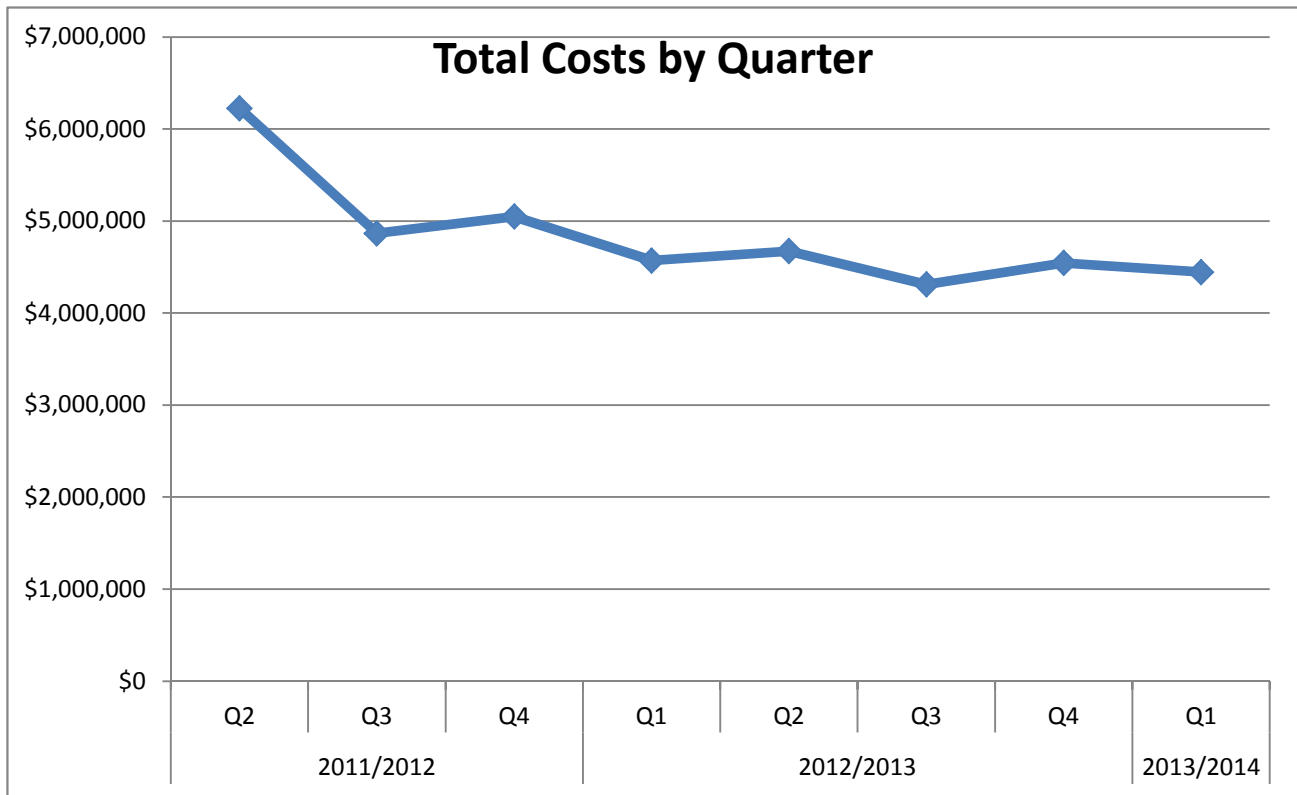


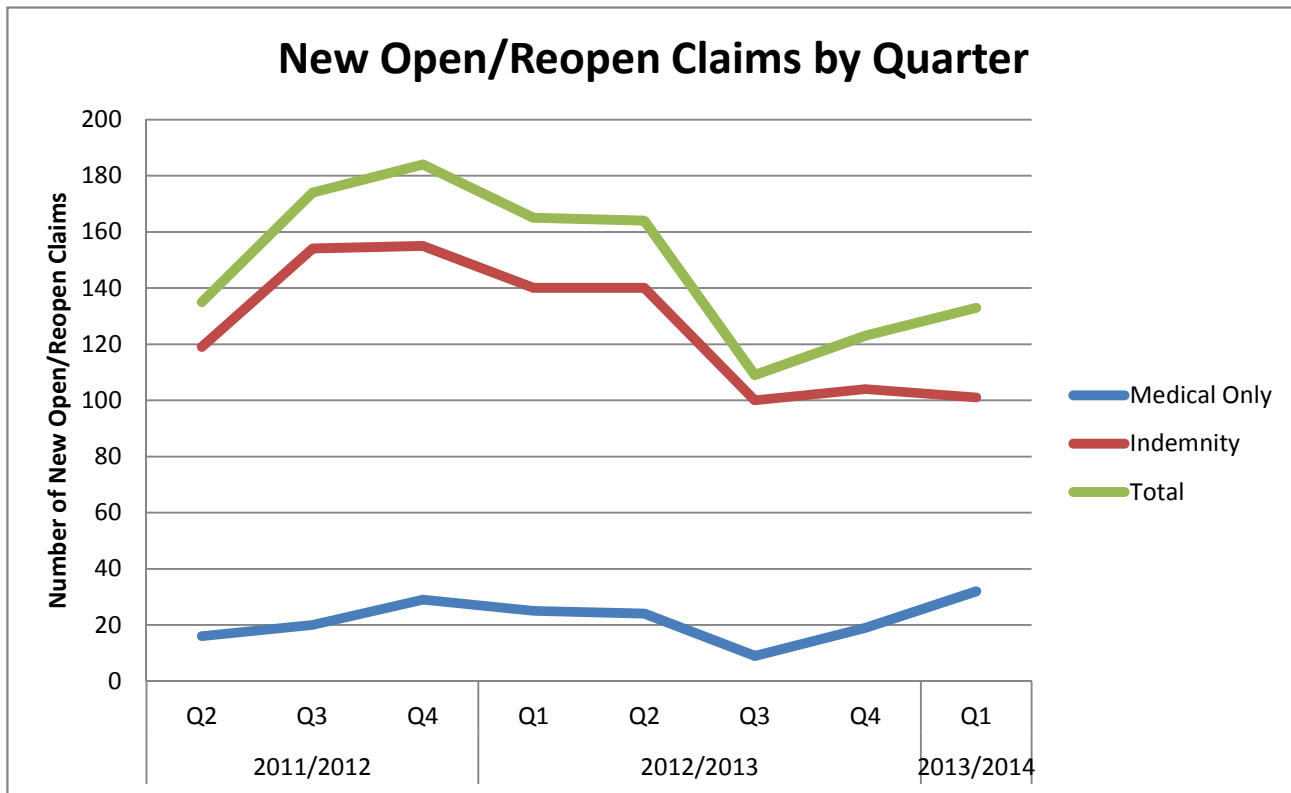
# Workers' Compensation Quarterly Report

2013/2014 First Quarter



Fiscal Year	Quarter	Total Paid Quarter
2011/2012	Q2	\$6,223,198
	Q3	\$4,865,964
	Q4	\$5,049,083
2012/2013	Q1	\$4,569,996
	Q2	\$4,672,402
	Q3	\$4,310,886
	Q4	\$4,544,846
2013/2014	Q1	\$4,444,702

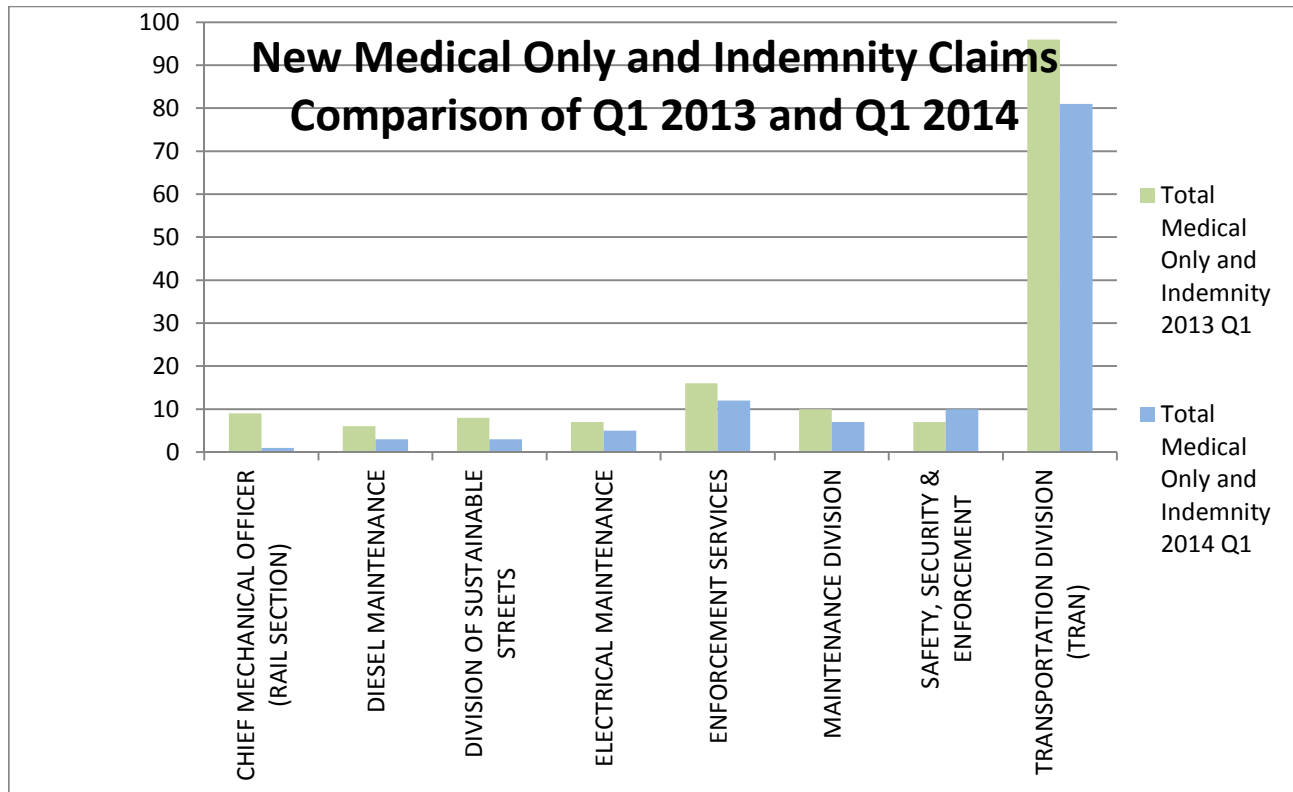
**Workers' Compensation Quarterly Report**  
2013/2014 First Quarter



Fiscal Year	Quarter	Medical Only	Indemnity	Total
2011/2012	Q2	16	119	135
	Q3	20	154	174
	Q4	29	155	184
2012/2013	Q1	25	140	165
	Q2	24	140	164
	Q3	9	100	109
	Q4	19	104	123
2013/2014	Q1	32	101	133

# Workers' Compensation Quarterly Report

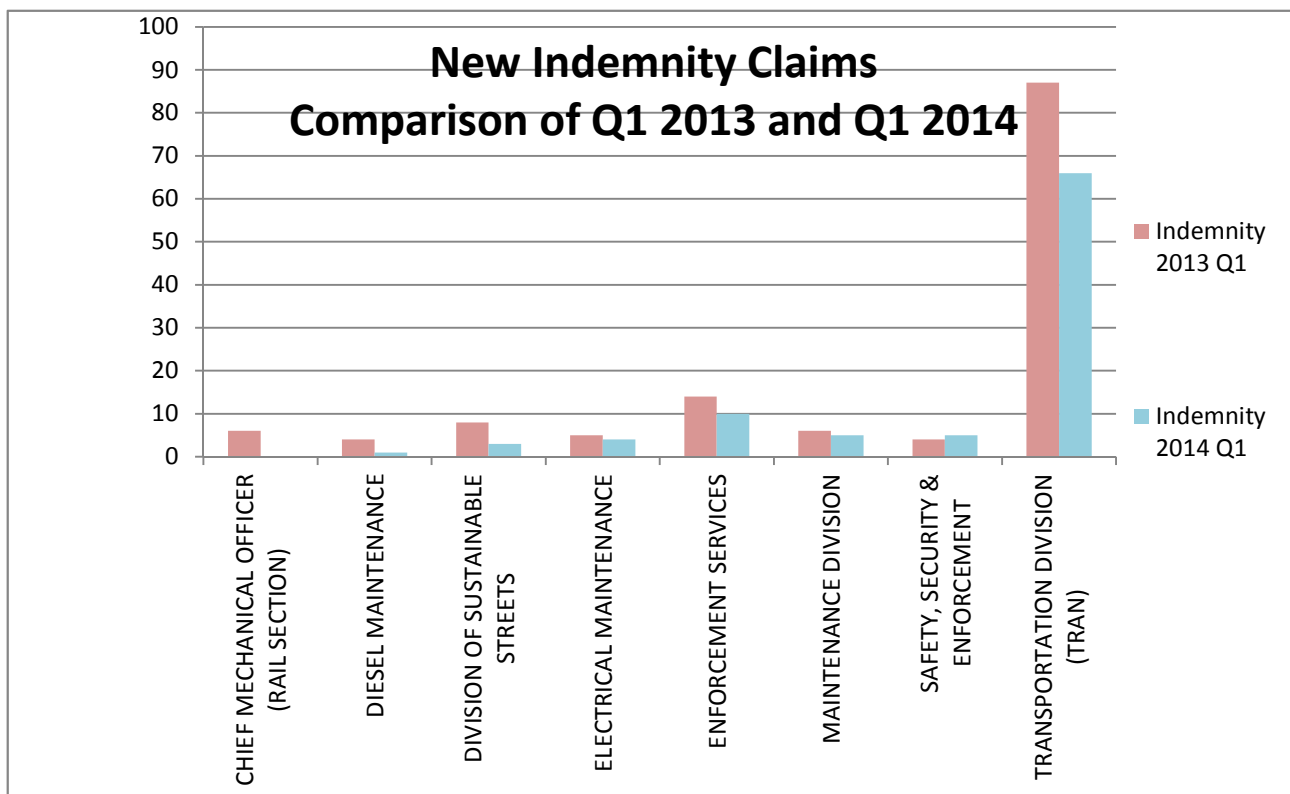
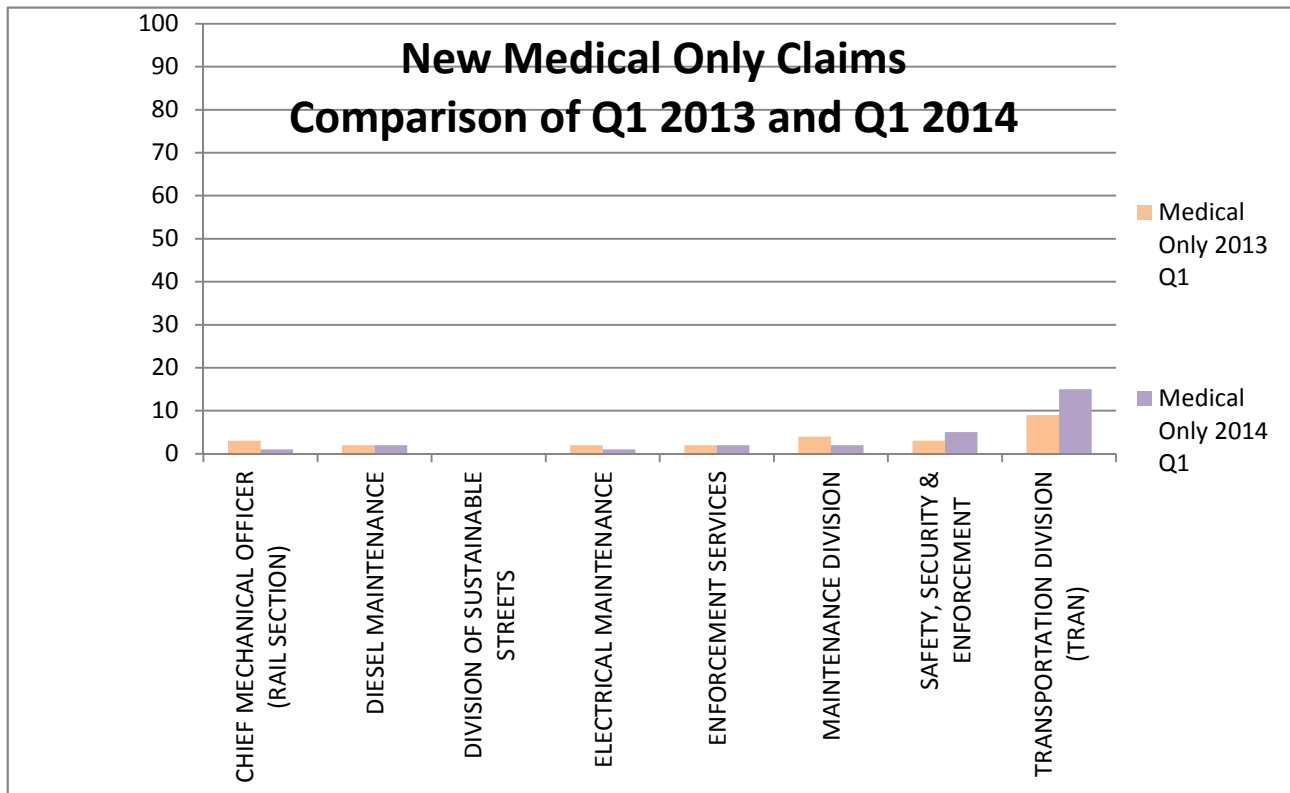
## 2013/2014 First Quarter



	Medical Only					Indemnity					Total Medical Only and Indemnity				
	2013	2013	2013	2013	2014	2013	2013	2013	2013	2014	2013	2013	2013	2013	2014
ADMIN., TAXIS & ACCESIBLE SERV.	0	1	1	0	0	0	0	5	0	0	0	1	6	0	0
ADMINISTRATION	0	0	0	1	0	0	0	0	0	0	0	0	0	1	0
ADMINISTRATION AND FINANCE	0	0	0	0	0	0	0	0	0	0	0	0	0	0	0
ADMINISTRATIVE HEARINGS	0	0	0	0	0	0	0	0	0	0	0	0	0	0	0
CABLE CAR & RAIL SYSTEMS	0	1	0	1	0	0	2	2	0	0	0	3	2	1	0
CHIEF MECHANICAL OFFICER (BUS SECTION)	0	0	0	2	1	1	0	1	3	0	1	0	1	5	1
CHIEF MECHANICAL OFFICER (RAIL SECTION)	3	0	0	0	1	6	2	3	0	0	9	2	3	0	1
CITATION DIVISION	0	0	0	0	0	1	2	1	0	0	1	2	1	0	0
COMMUNICATIONS MAINTENANCE SECTION	0	0	0	0	0	1	0	3	0	0	1	0	3	0	0
CONVERTED FROM VOS ONLY	0	0	0	0	1	0	0	0	1	1	0	0	0	1	2
DIESEL MAINTENANCE	2	3	1	0	2	4	9	10	4	1	6	12	11	4	3
DIRECTOR OF TRANSIT OPERATIONS	0	0	0	0	0	0	0	1	0	0	0	0	1	0	0
DIVISION OF SUSTAINABLE STREETS	0	3	0	0	0	8	7	6	0	3	8	10	6	0	3
ELECTRICAL MAINTENANCE	2	2	1	2	1	5	7	11	1	4	7	9	12	3	5
ENFORCEMENT SERVICES	2	3	0	1	2	14	13	14	6	10	16	16	14	7	12
EXECUTIVE DIRECTOR/CEO	0	0	0	0	0	0	0	2	0	1	0	0	2	0	1
FINANCE, ADMIN., INFORMATION TECH.	0	1	0	1	0	1	0	0	3	1	1	1	0	4	1
LEGISLATIVE AFFAIRS	0	0	0	0	0	0	0	0	0	0	0	0	0	0	0
MAINTENANCE / UNASSIGNED	0	0	0	0	1	0	0	0	0	1	0	0	0	0	2
MAINTENANCE DIVISION	4	0	1	2	2	6	7	11	4	5	10	7	12	6	7
OPERATIONS / UNASSIGNED	0	0	0	0	0	0	0	0	0	0	0	0	0	0	0
PARKING AUTHORITY	0	0	0	0	0	1	0	1	4	2	1	0	1	4	2
RESIDENTIAL PERMIT PARKING	0	0	0	0	0	0	1	0	0	0	0	1	0	0	0
SAFETY, SECURITY & ENFORCEMENT	3	1	0	1	5	4	12	8	0	5	7	13	8	1	10
STRUCTURE & WAYS	0	0	0	0	0	0	0	0	0	0	0	0	0	0	0
TAXI COMMISSION	0	0	0	0	0	1	0	0	0	0	1	0	0	0	0
TECHNICAL SERVICES	0	0	0	0	0	0	0	0	0	0	0	0	0	0	0
TRANSPORTATION DIVISION (TRAN)	9	9	6	7	15	87	79	130	78	66	96	88	136	85	81
TRANSPORTATION PLANNING & DEVELOPMENT	0	0	0	0	0	0	0	2	0	0	0	0	2	0	0

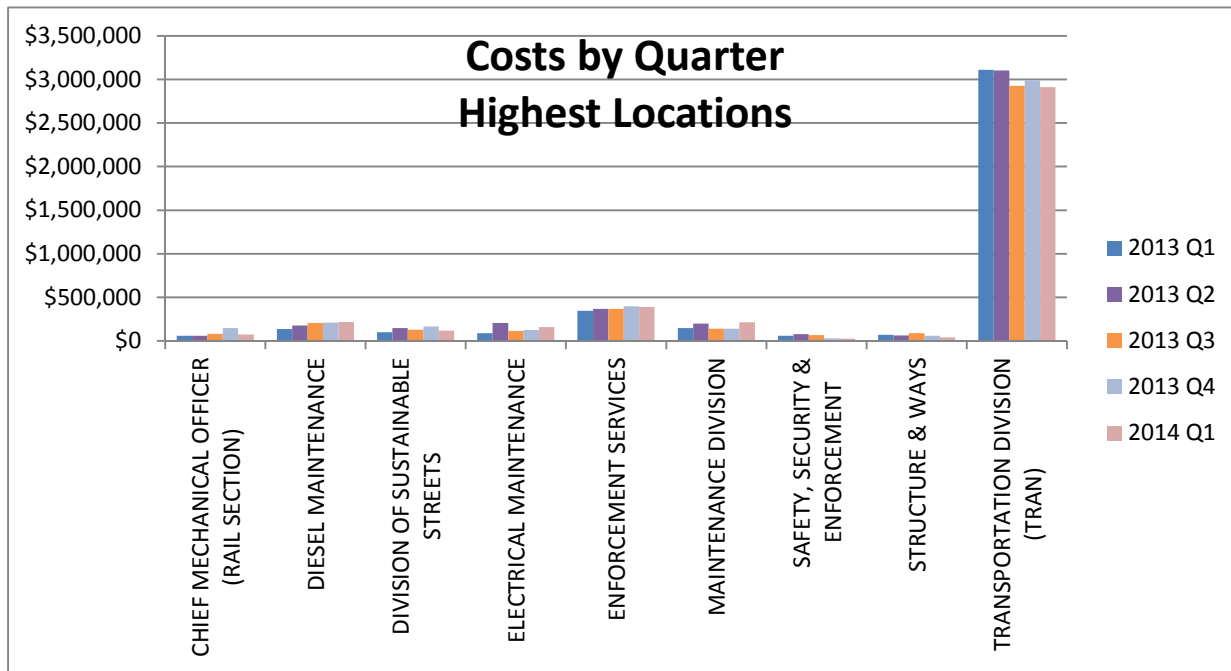
# Workers' Compensation Quarterly Report

2013/2014 First Quarter



# Workers' Compensation Quarterly Report

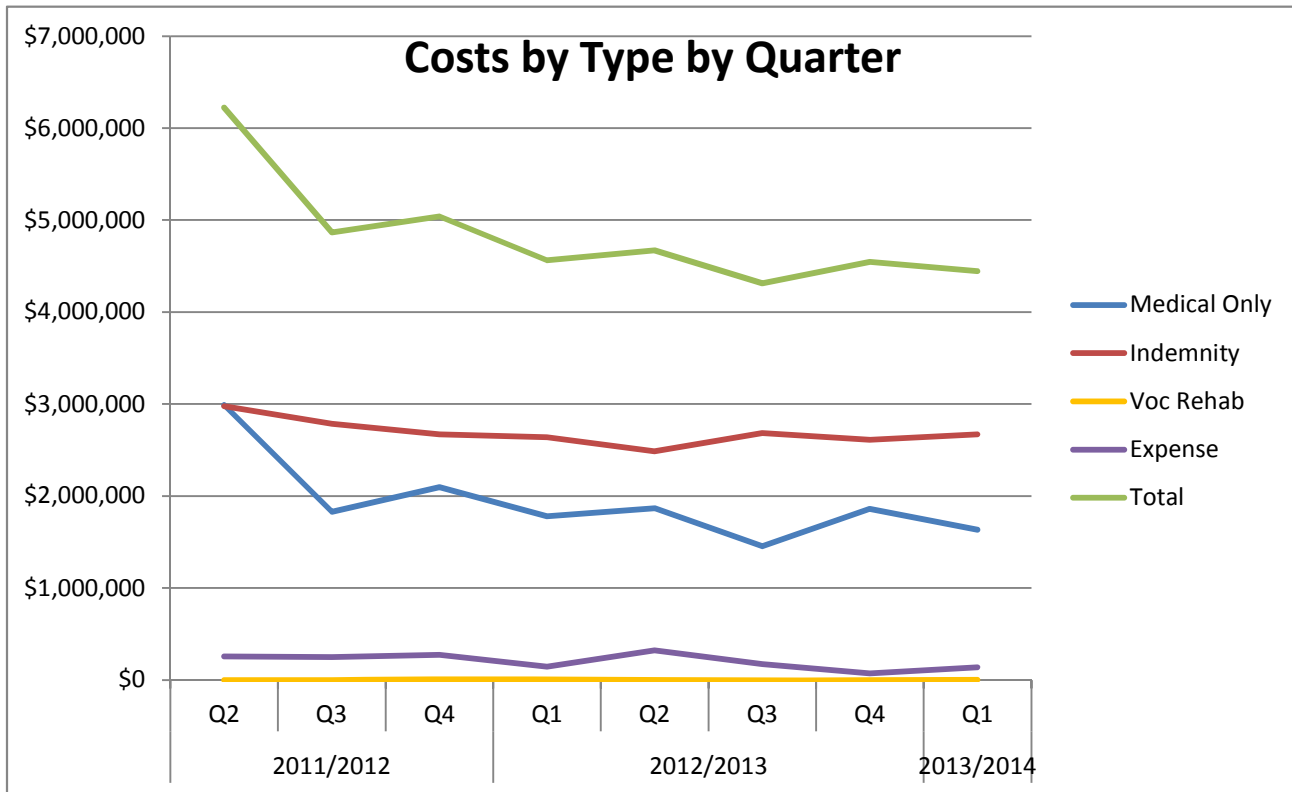
2013/2014 First Quarter



	2013 Q1	2013 Q2	2013 Q3	2013 Q4	2014 Q1
ADMIN., TAXIS & ACCESIBLE SERV. ADMINISTRATION	\$179,962	\$79,060	\$41,629	\$76,051	\$35,330
ADMINISTRATION	\$41,731	\$8,065	\$15,542	\$3,394	\$3,372
ADMINISTRATION AND FINANCE	\$3,388	\$3,493	\$2,840	\$4,738	\$3,943
ADMINISTRATIVE HEARINGS	\$5,196	\$37	\$24	\$653	\$0
CABLE CAR & RAIL SYSTEMS	\$16,800	\$25,593	\$18,199	\$31,778	\$26,234
CHIEF MECHANICAL OFFICER (BUS SECTION)	\$8,280	\$6,812	\$5,764	\$22,891	\$40,266
CHIEF MECHANICAL OFFICER (RAIL SECTION)	\$59,430	\$59,590	\$80,271	\$147,921	\$72,628
CITATION DIVISION	\$36,386	\$44,201	\$25,385	\$29,659	\$11,116
COMMUNICATIONS MAINTENANCE SECTION	\$1,339	\$9,494	\$5,547	\$2,542	\$1,792
DIESEL MAINTENANCE	\$137,504	\$175,346	\$205,311	\$210,541	\$219,079
DIRECTOR OF TRANSIT OPERATIONS	\$560	\$495	\$6,800	\$2,645	\$11,529
DIVISION OF SUSTAINABLE STREETS	\$100,888	\$147,871	\$130,799	\$165,898	\$119,637
ELECTRICAL MAINTENANCE	\$90,141	\$206,832	\$115,396	\$123,937	\$158,988
ENFORCEMENT SERVICES	\$345,476	\$366,894	\$367,032	\$397,952	\$391,457
EXECUTIVE DIRECTOR/CEO	\$16,087	\$16,963	\$14,723	\$10,093	\$6,955
FINANCE, ADMIN., INFORMATION TECH.	\$9,486	\$4,520	\$6,477	\$8,239	\$15,201
LEGISLATIVE AFFAIRS	\$758	\$617	\$687	\$74	\$0
MAINTENANCE DIVISION	\$146,638	\$200,226	\$139,676	\$139,311	\$214,948
PARKING AUTHORITY	\$8,000	\$7,766	\$3,944	\$8,123	\$8,394
RESIDENTIAL PERMIT PARKING	\$8,249	\$17,054	\$15,979	\$16,286	\$21,888
SAFETY, SECURITY & ENFORCEMENT	\$61,174	\$76,457	\$67,748	\$29,988	\$25,152
STRUCTURE & WAYS	\$68,885	\$64,528	\$88,224	\$59,355	\$42,196
TAXI COMMISSION	\$1,910	\$1,361	\$1,006	\$1,656	\$790
TECHNICAL SERVICES	\$1,423	\$1,581	\$4,919	\$2,663	\$1,408
TRANSPORTATION DIVISION (TRAN)	\$3,109,465	\$3,104,051	\$2,927,321	\$2,987,946	\$2,911,160
TRANSPORTATION PLANNING & DEVELOPMENT	\$1,731	\$2,052	\$770	\$4,313	\$109

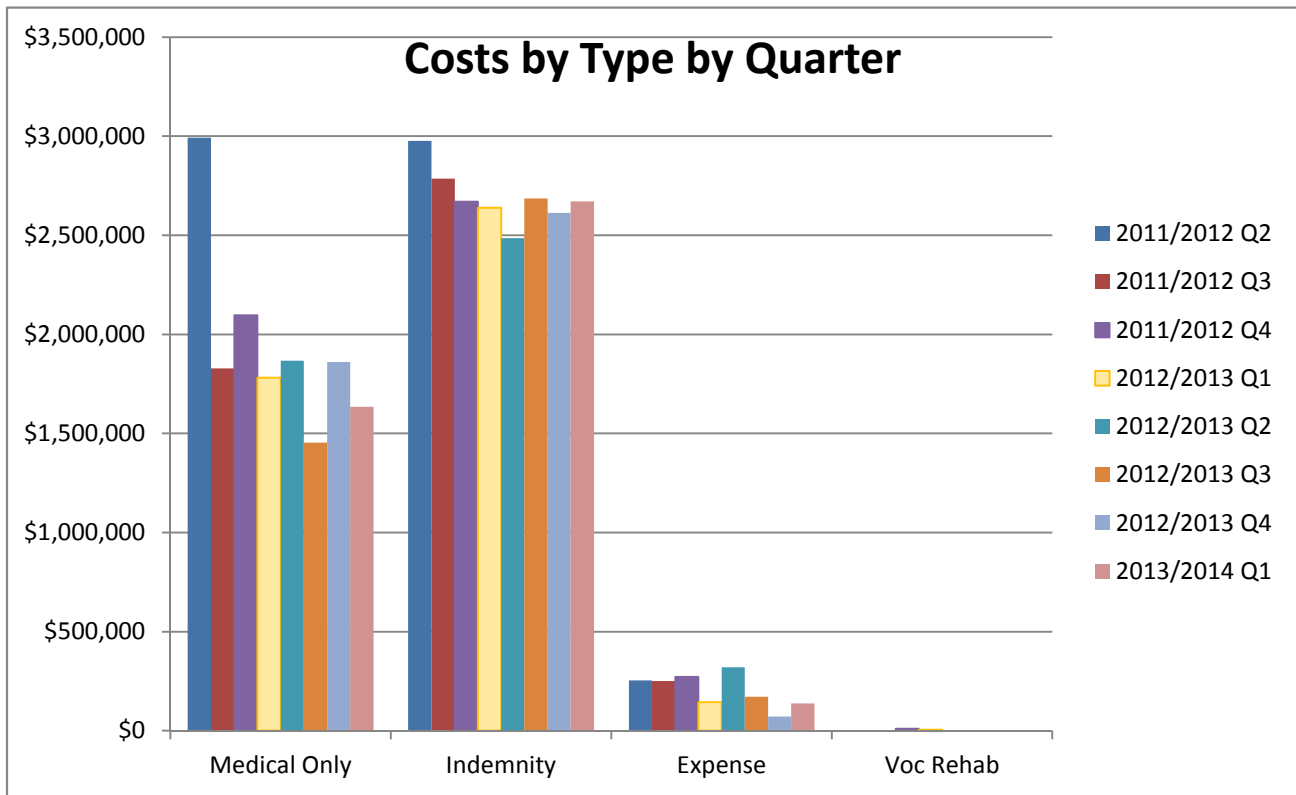
# Workers' Compensation Quarterly Report

## 2013/2014 First Quarter



Fiscal Year	Quarter	Medical Only	Indemnity	Expense	Voc Rehab	Total
2011/2012	Q2	\$2,991,923	\$2,976,676	\$254,598	\$0	\$6,223,197
	Q3	\$1,828,816	\$2,786,336	\$250,811	\$0	\$4,865,963
	Q4	\$2,096,545	\$2,669,713	\$272,092	\$10,732	\$5,038,350
2012/2013	Q1	\$1,781,397	\$2,637,947	\$144,821	\$5,829	\$4,564,165
	Q2	\$1,867,153	\$2,484,626	\$320,622	\$0	\$4,672,401
	Q3	\$1,453,646	\$2,686,118	\$171,120	\$0	\$4,310,884
	Q4	\$1,860,647	\$2,612,308	\$71,891	\$0	\$4,544,846
2013/2014	Q1	\$1,634,964	\$2,670,290	\$137,966	\$1,480	\$4,443,220

**Workers' Compensation Quarterly Report**  
2013/2014 First Quarter



Fiscal Year	Quarter	Medical Only	Indemnity	Expense	Voc Rehab	Total
2011/2012	Q2	\$2,991,923	\$2,976,676	\$254,598	\$0	\$6,223,197
	Q3	\$1,828,816	\$2,786,336	\$250,811	\$0	\$4,865,963
	Q4	\$2,096,545	\$2,669,713	\$272,092	\$10,732	\$5,038,350
2012/2013	Q1	\$1,781,397	\$2,637,947	\$144,821	\$5,829	\$4,564,165
	Q2	\$1,867,153	\$2,484,626	\$320,622	\$0	\$4,672,401
	Q3	\$1,453,646	\$2,686,118	\$171,120	\$0	\$4,310,884
	Q4	\$1,860,647	\$2,612,308	\$71,891	\$0	\$4,544,846
2013/2014	Q1	\$1,634,964	\$2,670,290	\$137,966	\$1,480	\$4,443,220