

# Geary Boulevard Improvement Project



## Welcome!

The Geary Boulevard Improvement Project includes a community enhancement element to beautify the corridor. Your input will help determine what idea is selected in the coming months! We will have a second round of outreach later this year to share the favorite treatment(s) and ask for feedback on the details of the design. The selected treatment will be installed on Geary Boulevard along with other planned utility, transit, and safety improvements.

### Get the most out of this event:

- Sign in and pick up a survey to fill out
- Visit each information station to learn about enhancement options and talk to project staff who can answer your questions
- Fill out and turn in your survey before you leave

### Event goals:

- Share ideas for the Community Enhancement element
- Get your feedback on these concepts to determine what idea is selected in the coming months
- Answer questions and hear feedback related to the broader Geary Boulevard Improvement Project

[SFMTA.com/EnhanceGeary](https://www.sfmta.com/EnhanceGeary)



## Bus stop sidewalk design options

Wider sidewalks will be built at eight Rapid bus stops within the project area to provide a larger area to wait for the bus. These represent a potential canvas for decorative designs. Three types of designs would be possible to construct at some of these stops.



### A Sidewalk pavers

- Would add pavers at select bus stops.
- Could include a decorative brick edge like those seen at some Muni bus stops or colored decorative pavers.



Examples: Muni bus stop brick band on Geary at Laguna, and sidewalk pavers on South Van Ness at Mission Street

### B Etched/stamped sidewalk concrete

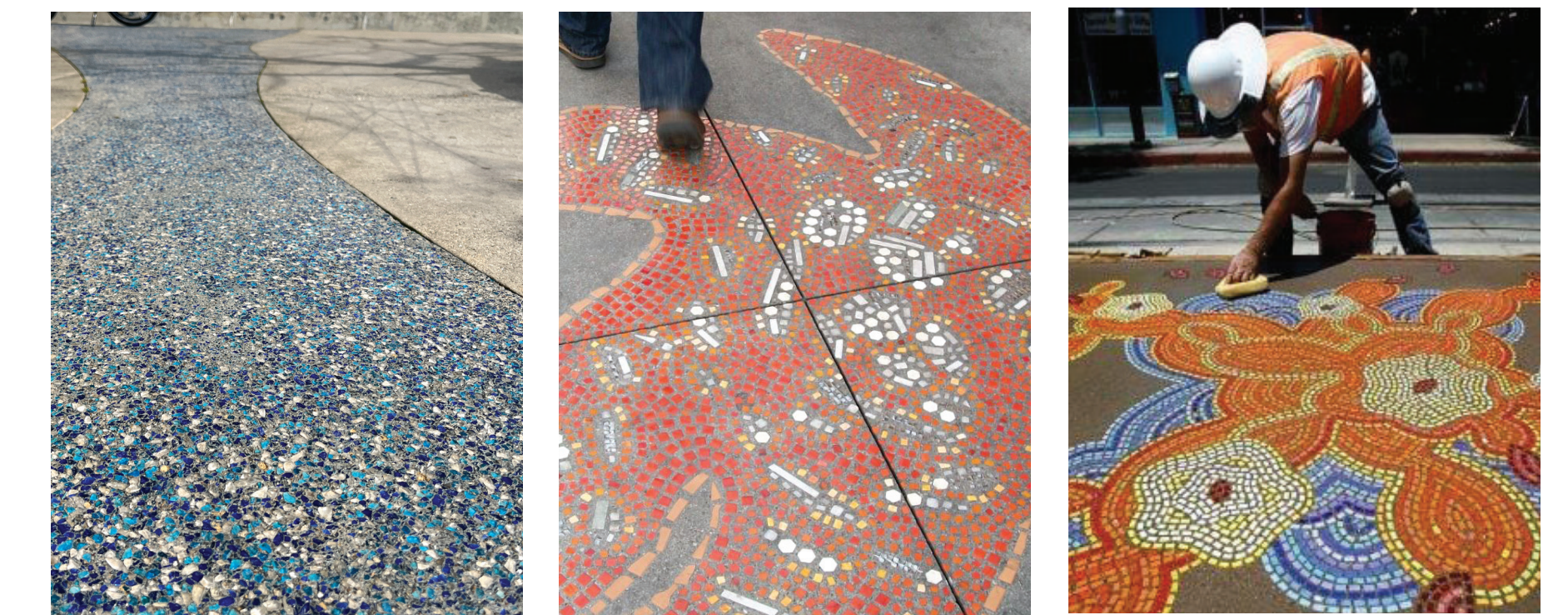
- Would add etched or stamped concrete designs on the sidewalk at select bus stops.
- Example designs shown below illustrate animals, poetry and flowers, but would be designed uniquely for the Geary corridor.



Examples: Winnipeg, Portland, and Minneapolis etched concrete

### C Decorative sidewalk concrete with glass aggregate

- Would add colorful glass mosaic designs on the sidewalk at select bus stops.



Examples: In Chan Kaajal Park in San Francisco, unknown location, and Tucson



## Streetscape amenity options

### D Street trees

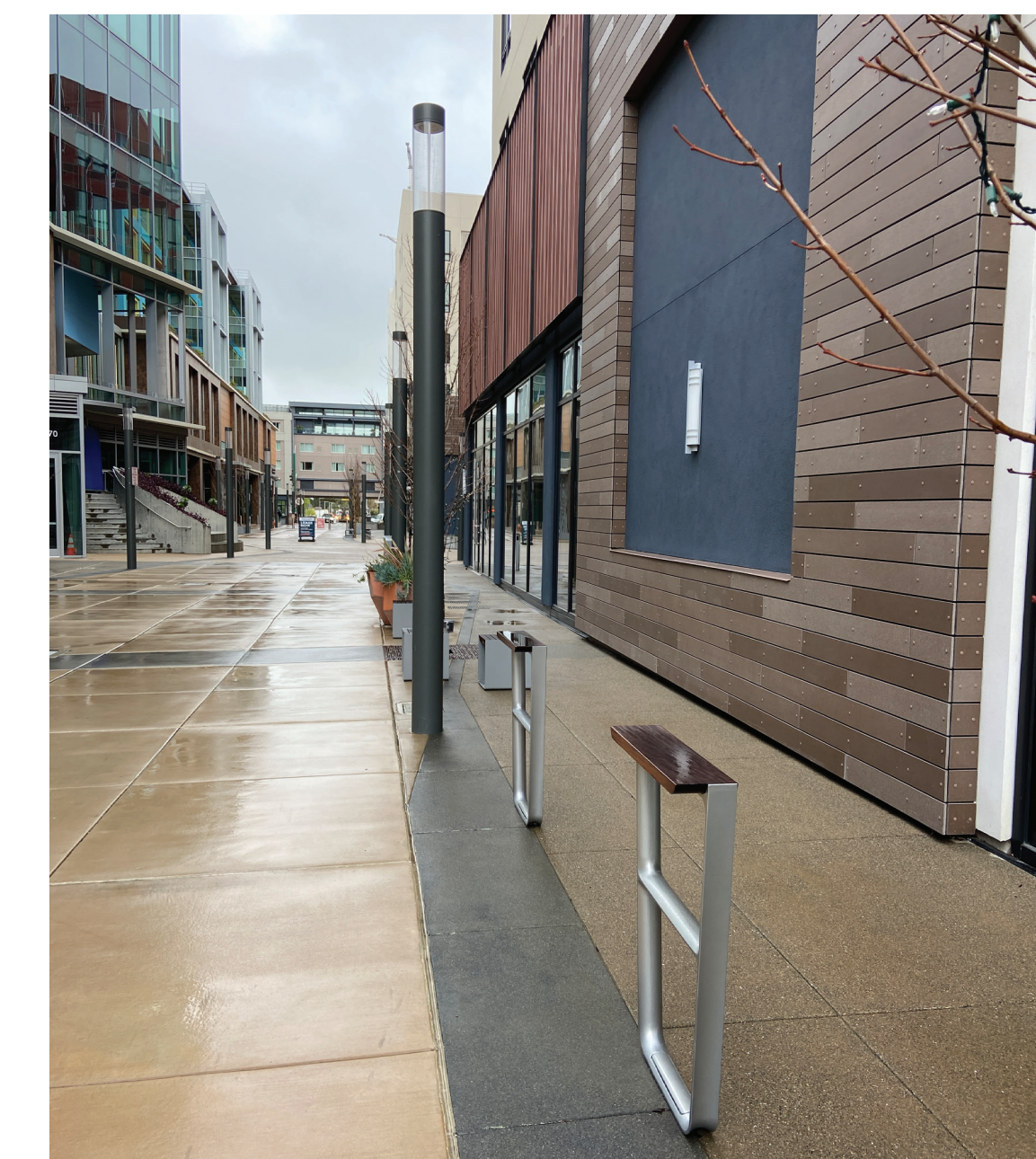
- Would add new street trees along Geary Boulevard.
- Some possible places where trees could be added are on the sidewalk at the former locations of bus stops that were relocated in 2023, or in the center median of Geary Boulevard.
- If selected, the tree species would be determined during the next round of outreach.



*Example: New trees on Geary Boulevard in the Western Addition*

### E Leaning rails at bus stops

- Would add railings designed for passengers to lean against at bus stops, providing a more comfortable waiting experience.
- Note that most bus stops that do not yet have a shelter with seating are planned to have one installed later this year.
- Leaning rails would provide an additional option at busy stops where more people may be waiting than the number of bus shelter seats available.



*Examples: Leaning rails on Castro Street and at Millbrae station*



## District and neighborhood identity markers

District or neighborhood markers are an opportunity to install a highly visible marker at one or more locations to contribute to neighborhood place-making.

### F Large district marker

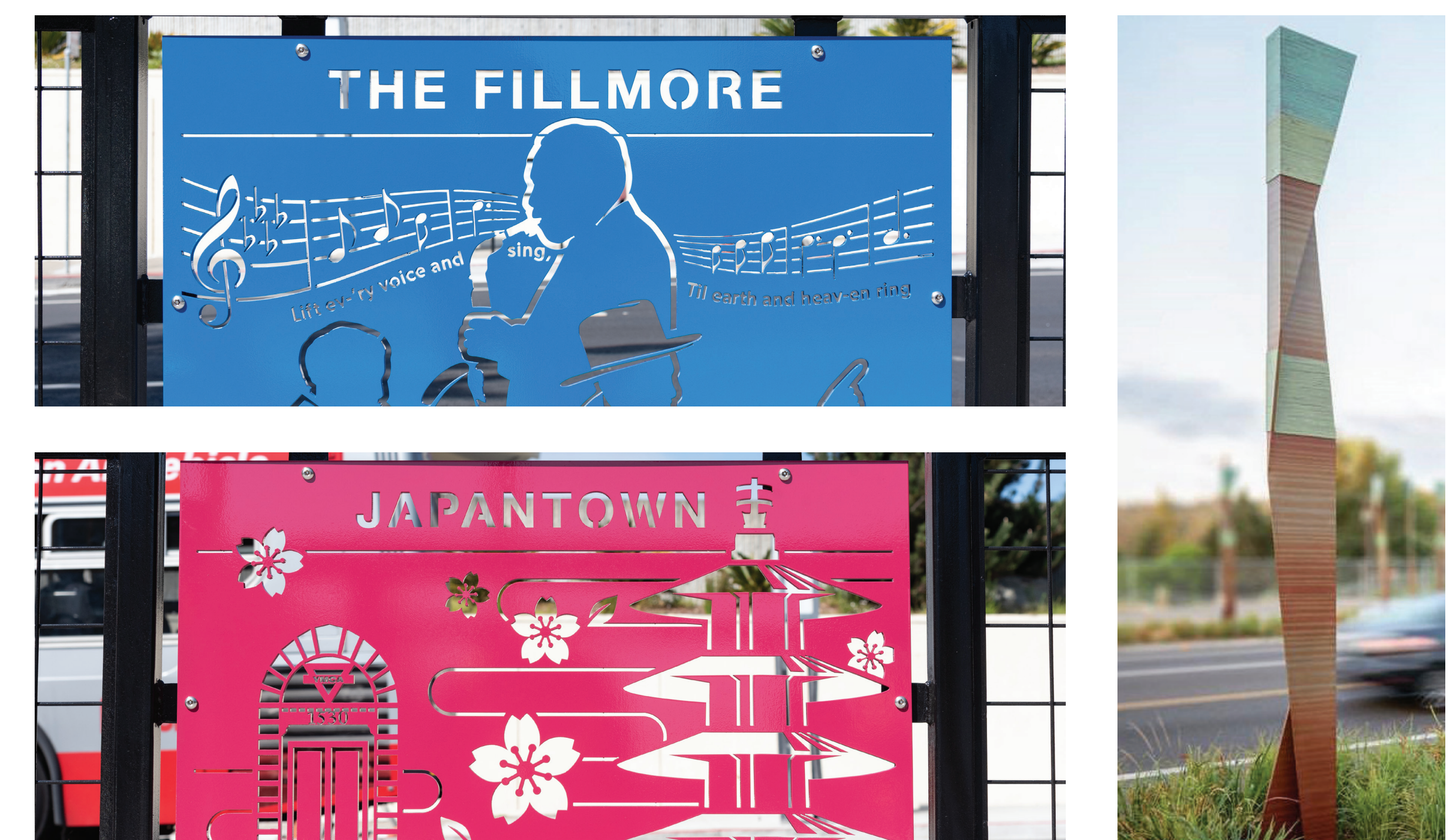
- Would add a large, highly visible vertical marker at one location (e.g. Geary at 20th Avenue)
- If selected, the design of the marker would be determined in the next round of outreach.



Examples: Balboa Street and Taraval Street gateway markers

### G Small neighborhood identity markers

- Similar to a larger district marker, but would add smaller markers at a few locations.
- If selected, the design would be determined in the next round of outreach.
- Examples could include signs, decorative metal panels or vertical structures.



Examples: Western Addition neighborhood in San Francisco, and Sellwood neighborhood in Portland, Oregon



## An opportunity to highlight Richmond District history and/or culture

The following community enhancement options would provide an opportunity to highlight elements of Richmond District history, culture, and/or identity: etched/stamped sidewalk concrete, decorative sidewalk concrete with glass aggregate, small neighborhood identity markers and large district marker.

Below are four possible themes to highlight. You can weigh in on these ideas and suggest others in the survey.

### Cultural history

The Richmond District is home to many communities including Chinese, Russian, Jewish, Irish, and before that, the area was home to the Ohlone Nation. Each of these groups have unique stories and visuals that could be shared in a design.



2023 Autumn Moon Festival (photo from Richmond Neighborhood Center)

### Landmarks

Landmarks of the Richmond District include churches, schools, and theaters. Some of these landmarks have unique visual elements, such as towers, while others may blend into the overall architectural style of the neighborhood.



George Washington High School, the Alexandria Theater, Holy Virgin Cathedral, and Sutro Baths. Last two photos by Carol Highsmith.

### Nature

The Richmond District is the gateway to some of San Francisco's finest natural areas. There are some distinctive tree species as well as native animals and insects. And of course, the characteristic fog.



Conservatory of Flowers in Golden Gate Park (photo by Carol Highsmith), cypress trees at Lands End (photo by Sharon Mollerus), Ocean Beach, and Seal Rocks

### Transportation

Geary Boulevard has been a major transit corridor since the 1800s. Horse-drawn streetcars and omnibuses, steam trains, cable cars, electric streetcars, and motor buses have all transported passengers along Geary Boulevard in the Richmond District.



Geary Park and Ocean Railway cable car train, B Geary streetcar in 1941, 38 Geary bus in 1969, and 38 Geary bus in 2018

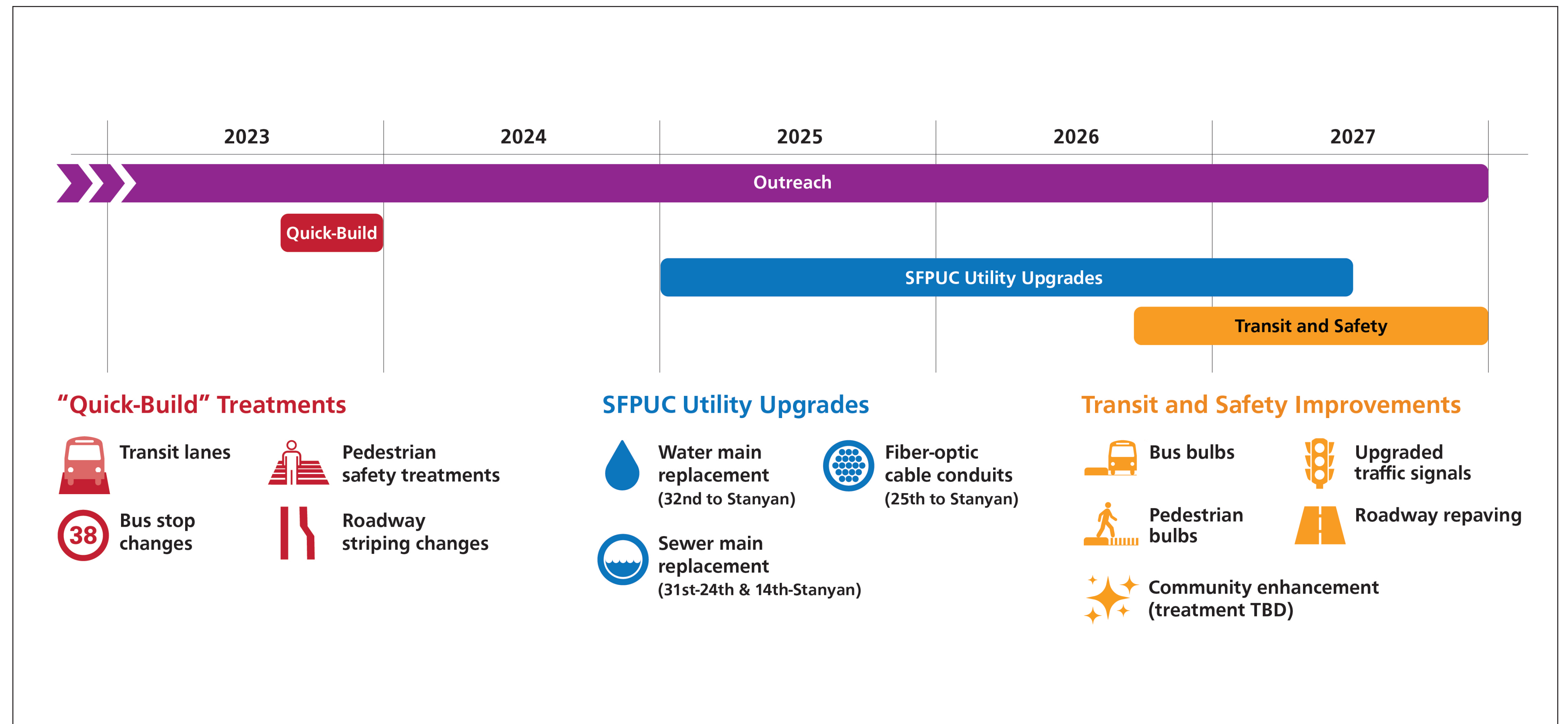




## About the project

The Geary Boulevard Improvement Project aims to improve transit and safety along Geary Boulevard between Stanyan Street and 34th Avenue. After receiving project approvals from the SFMTA Board in August 2023, the Quick-Build phase of improvements was implemented in fall of 2023, including:

- New transit lanes
- Bus stop changes
- Left-turn restrictions and other safety improvements
- New angled parking on cross-streets near Geary.



The project team is working with a Small Business Working Group to direct a project-funded marketing campaign to support businesses on Geary. Next steps for the project include evaluating the Quick-Build phase of the project (later this year) and implementing the remaining SFMTA improvements such as bus bulbs, pedestrian bulbs, median refuges, and traffic signal upgrades (in a few years). The selected community enhancement treatment will also be installed at that time.

To minimize disruption to the community, this work is being coordinated with SF Public Utilities Commission sponsored water and sewer upgrades that are anticipated to begin next year.