

SFMTA - TASC SUMMARY SHEET

PreStaff_Date: 9/10/2021 Requested_by: Developer Handled: Lucia Ruiz <i>LR</i> Section Head : BD <i>BD</i>	<input type="checkbox"/> Public Hearing Consent <input checked="" type="checkbox"/> Public Hearing Regular <input type="checkbox"/> Informational / Other <small>PH - Regular</small>	No objections: _____ Item Held: _____ Other: _____
---	---	---

Location: 20th St btwn Illinois St & Georgia St, 22nd St btwn Illinois St to Louisiana St

Subject: Pier 70 Development Project Phase 1

PROPOSAL / REQUEST:
 ESTABLISH – TOW-AWAY, NO STOPPING ANYTIME
 ESTABLISH – SIDEWALK WIDENING
 Illinois Street, northeast side, from 20th Street to 40 feet north (6-wide bulb-out)
 Illinois Street, southeast side, from 20th Street to 40 feet south (6-wide bulb-out)
 Illinois Street, southeast side, from 22nd Street to 40 feet south (6-wide bulb-out)

ESTABLISH – TRAFFIC SIGNAL
 20th Street and Illinois Street intersection (replaces 4-way stop)
 22nd Street and Illinois Street intersection (replaces 4-way stop)

ESTABLISH – RED ZONE
 20th Street, north & south side, from Illinois Street to 35 feet east (35 feet)

ESTABLISH – RED ZONE
 22nd Street, south side, from Illinois Street to 33 feet east (33 feet)

BACKGROUND INFORMATION / COMMENTS
 Pier 70 Phase I project is located within the Port's southern waterfront between 20th & 22nd Streets east of Illinois Street. The site is being redeveloped by master developer, Brookfield properties.

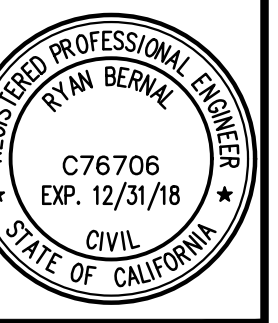
For more information on the project, please see website address below:
https://sfplanning.org/environmental-review-documents?title=Pier+70&field_environmental_review_categ_target_id=All&items_per_page=10

HEARING NOTIFICATION AND PROCESSING NOTES:	ENVIRONMENTAL CLEARANCE BY: <input type="checkbox"/> SFMTA <input checked="" type="checkbox"/> Attached <input type="checkbox"/> Pending
---	--

CHECK IF PREPARING SEPARATE SFMTA BOARD CALENDAR ITEM FOR PROPOSAL:

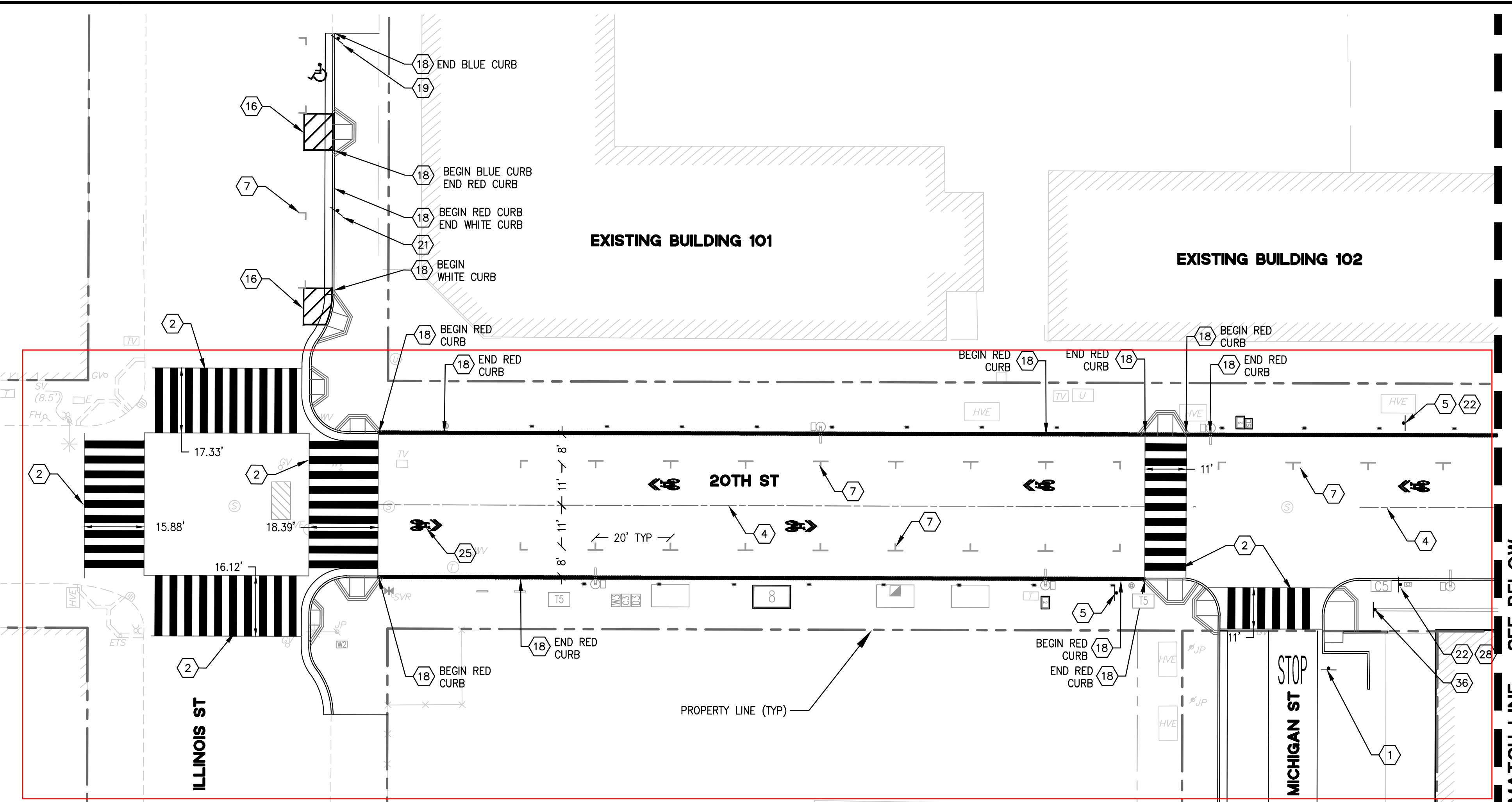


BKF 100 YEARS ENGINEERS, SURVEYORS, PLANNERS

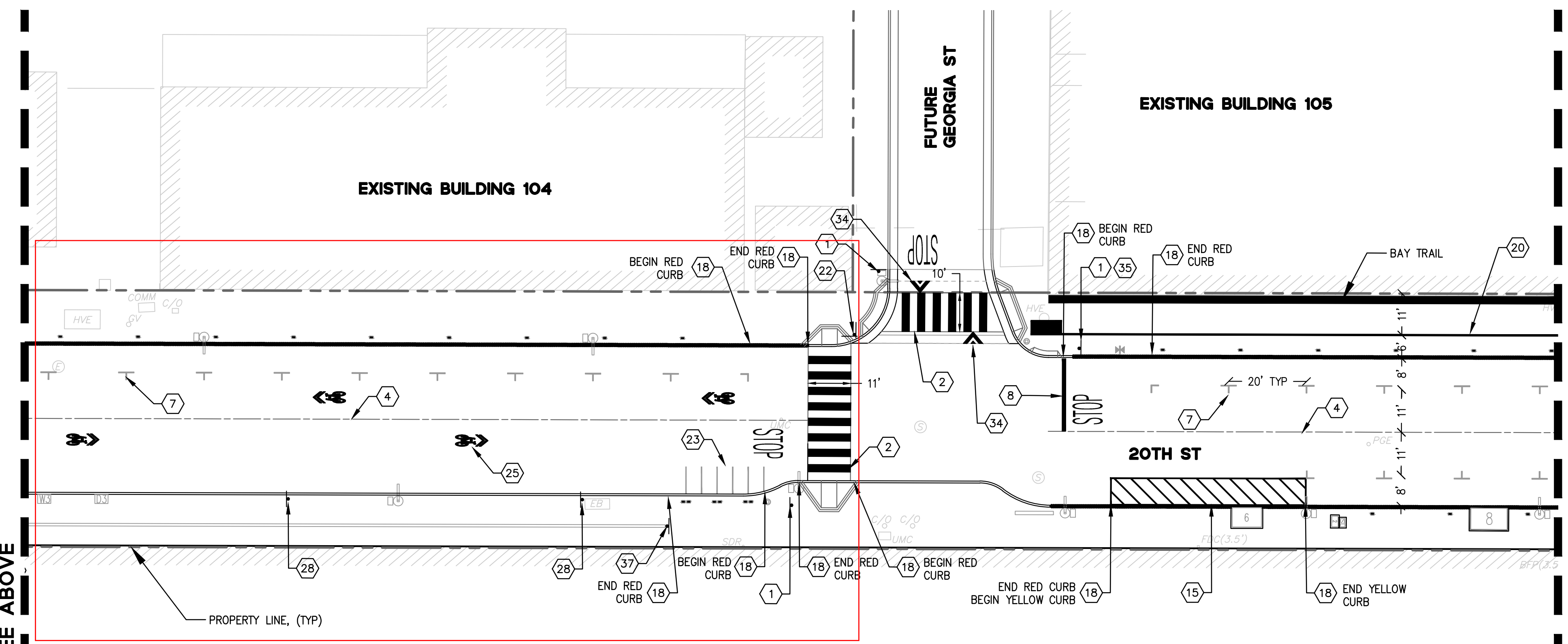


PIER 70 SUD PHASE 1 IMPROVEMENT PLANS SIGNAGE AND STRIPING PLAN - 20TH

Table with columns: No., Date, AS SHOWN, Design, Drawn, Approved, Job No. 20170209



20TH STREET SCALE: HORIZONTAL 1" = 20'



20TH STREET SCALE: HORIZONTAL 1" = 20'

SIGNING AND STRIPING KEYNOTES:

- 1 "STOP" SIGN MUTCD R1-1
2 2' WHITE CONTINENTAL CROSSWALK, 4' O.C. PER SFMTA STANDARDS
3 CROSSWALK STRIPING, SEE LANDSCAPE PLANS
... 37 "ACCESSIBLE ROUTE" (WITH RIGHT ARROW & GRAPHIC) SIGN

LEGEND:

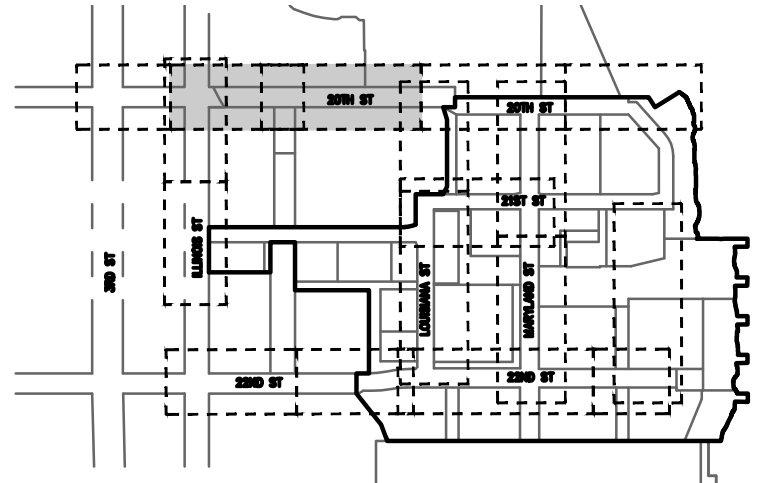
- INSTALL BIKE LANE ARROW CALTRANS STANDARD SHEET A24A
INSTALL "STOP" PAVEMENT MARKING CALTRANS STANDARD SHEET A24D
INSTALL BIKE LANE SYMBOL WITH PERSON CALTRANS STANDARD SHEET A24C
... INSTALL MUTCD SIGN

NOTES:

- 1. ALL TRAFFIC STRIPING AND PAVEMENT MARKINGS TO CONFORM TO CALTRANS STANDARD PLANS DATED 2015 AND THE CALIFORNIA MANUAL ON UNIFORM TRAFFIC CONTROL DEVICES (CA MUTCD) DATED 2014 UNLESS OTHERWISE NOTED.
2. ANY TRAFFIC STRIPING, PAVEMENT MARKINGS, PAVEMENT SURFACE, ETC. TO REMAIN THAT IS DAMAGED OR DESTROYED BY THE CONTRACTOR'S WORK SHALL BE REPLACED BY THE CONTRACTOR TO THE SATISFACTION OF THE CITY ENGINEER AT THE CONTRACTOR'S EXPENSE.
... 7. STREETS SHALL NOT BE OPENED FOR PUBLIC USE UNTIL ALL TEMPORARY OR PERMANENT STRIPING AND TRAFFIC SIGNAL EQUIPMENT IS INSPECTED AND ACCEPTED BY SFMTA.

GENERAL NOTES:

- 1. LOCATIONS OF EXISTING SIGNS, STRIPING, AND PAVEMENT MARKERS ARE APPROXIMATE ONLY. NEW ROADSIDE SIGNS SHALL CONFORM TO THE LATEST PROVISIONS OF THE CALIFORNIA MANUAL ON UNIFORM TRAFFIC CONTROL DEVICES (CA MUTCD) AND CCSF STANDARD PLANS AND THE PROJECT SPECIAL PROVISIONS.
2. FOR PARKING METER LOCATIONS, SEE LANDSCAPE PLANS.
3. A SPECIAL TRAFFIC PERMIT (STP) IS REQUIRED IF THE CONTRACTOR CANNOT COMPLY WITH THE BLUE BOOK REGULATIONS.



DRAWING NAME: Z:\AGS\project\2017\AGS-17-016 Forest City Pier 70 (BKF)\5_Production\1_Drawings\2_Sheets\Street Improvement\P70-C9.00 Striping Plan.dwg PLOT DATE: 11-13-18 PLOTTED BY: michael.ngo

MATCH LINE - SEE ABOVE

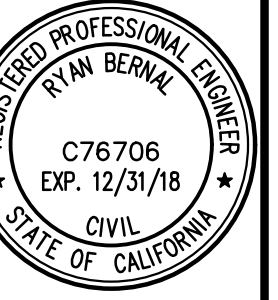
MATCH LINE - SEE BELOW

MATCH LINE - SEE SHEET C9.01

THIRD SUBMITTAL



BKF 100 YEARS OF PLANNERS ENGINEERS, SURVEYORS, PLANNERS

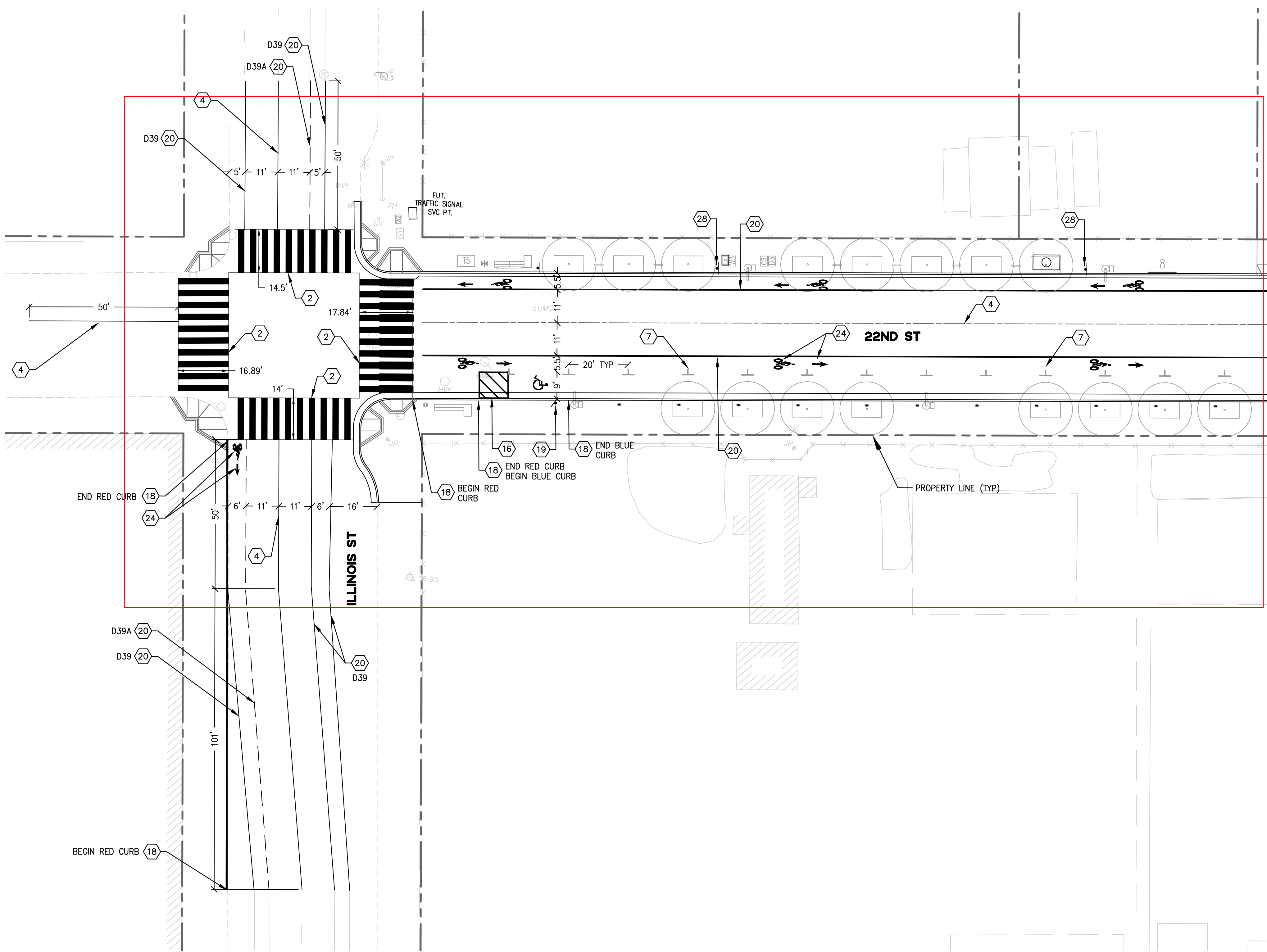


PIER 70 SUD PHASE 1 IMPROVEMENT PLANS SIGNAGE AND STRIPING PLAN - 22ND

Table with 3 columns: No., Date, Description. Includes revision history for 2ND and 3RD SUBMITTALS.

THIRD SUBMITTAL

DRAWING NAME: Z:\AGS\project\2017\AGS-17-016 Forest City Pier 70 (BKF)\5_Production\1_Drawings\2_Sheets\Street Improvement\P70-C9.00 Striping Plan.dwg



22ND STREET SCALE: HORIZONTAL 1" = 20'

SIGNING AND STRIPING KEYNOTES:

- 1 "STOP" SIGN MUTCD R1-1
2 2' WHITE CONTINENTAL CROSSWALK, 4' O.C. PER SFMTA STANDARDS
3 CROSSWALK STRIPING, SEE LANDSCAPE PLANS
... 37 "ACCESSIBLE ROUTE" (WITH RIGHT ARROW & GRAPHIC) SIGN

LEGEND:

- INSTALL BIKE LANE ARROW CALTRANS STANDARD SHEET A24A
INSTALL "STOP" PAVEMENT MARKING CALTRANS STANDARD SHEET A24D
INSTALL BIKE LANE SYMBOL WITH PERSON CALTRANS STANDARD SHEET A24C
... INSTALL MUTCD SIGN

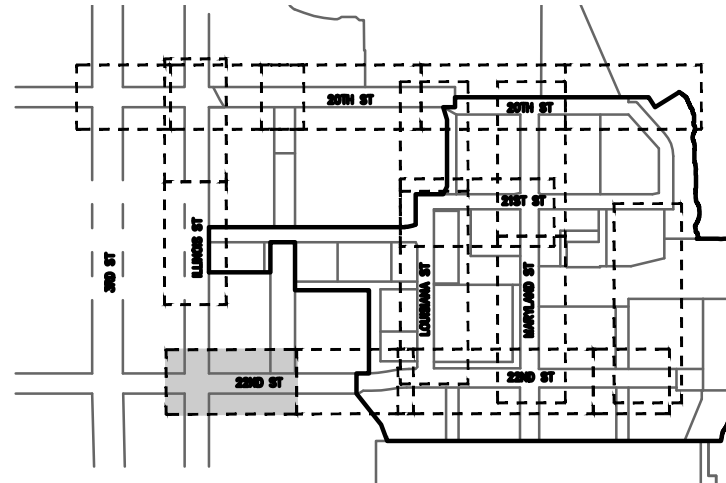
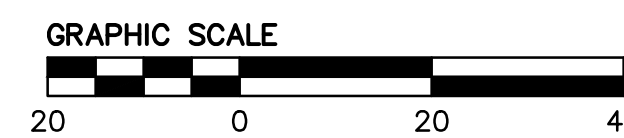
NOTES:

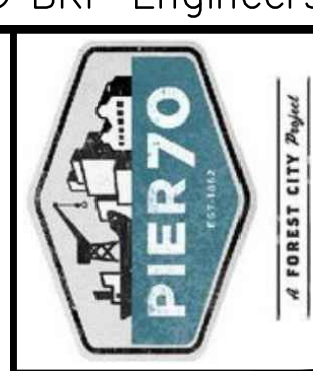
- 1. ALL TRAFFIC STRIPING AND PAVEMENT MARKINGS TO CONFORM TO CALTRANS STANDARD PLANS DATED 2015 AND THE CALIFORNIA MANUAL ON UNIFORM TRAFFIC CONTROL DEVICES (CA MUTCD) DATED 2014 UNLESS OTHERWISE NOTED.
2. ANY TRAFFIC STRIPING, PAVEMENT MARKINGS, PAVEMENT SURFACE, ETC. TO REMAIN THAT IS DAMAGED OR DESTROYED BY THE CONTRACTOR'S WORK SHALL BE REPLACED BY THE CONTRACTOR TO THE SATISFACTION OF THE CITY ENGINEER AT THE CONTRACTOR'S EXPENSE.
3. ALL PAVEMENT STRIPING AND MARKINGS SHALL BE THERMOPLASTIC CONFORMING TO CALTRANS STANDARD SPECIFICATIONS, UNLESS OTHERWISE NOTED.
4. ALL PERMANENT TRAFFIC SIGNS, CURB PAINTING & PAVEMENT MARKINGS SHOWN ON THESE PLANS SHALL BE FURNISHED AND INSTALLED BY THE CSF. FINAL CONFIGURATION & QUANTITIES OF SIGNAGE & STRIPING SHALL BE DETERMINED BY SFMTA FOLLOWING FINAL COMPLETION OF SIDEWALK & ROADWAY PAVEMENT. THE INSTALLATION COST OF FINAL TRAFFIC SIGNS AND PAVEMENT MARKINGS SHALL BE PAID FOR BY THE CONTRACTOR.
5. PRIOR TO START OF CONSTRUCTION, CONTRACTOR SHALL SUBMIT A COMPLETE SET OF CONSTRUCTION SIGNING AND STRIPING PLANS TO SFMTA FOR APPROVAL. CONTRACTOR SHALL FURNISH, INSTALL, AND MAINTAIN SIGNING AND STRIPING AS REQUIRED IN ACCORDANCE WITH SFMTA AND CALTRANS STANDARDS. SFMTA PERMITS THE USE OF TEMPORARY STRIPING TAPE FOR UP TO 30 DAYS; ALL STRIPING INSTALLATION EXCEEDING THAT DURATION SHALL BE THERMOPLASTIC.

GENERAL NOTES:

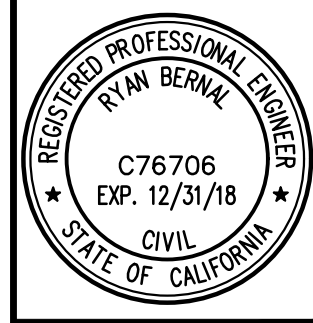
- 1. LOCATIONS OF EXISTING SIGNS, STRIPING, AND PAVEMENT MARKERS ARE APPROXIMATE ONLY. NEW ROADSIDE SIGNS SHALL CONFORM TO THE LATEST PROVISIONS OF THE CALIFORNIA MANUAL ON UNIFORM TRAFFIC CONTROL DEVICES (CA MUTCD) AND CCSF STANDARD PLANS AND THE PROJECT SPECIAL PROVISIONS.
2. FOR PARKING METER LOCATIONS, SEE LANDSCAPE PLANS.
3. A SPECIAL TRAFFIC PERMIT (STP) IS REQUIRED IF THE CONTRACTOR CANNOT COMPLY WITH THE BLUE BOOK REGULATIONS.

MATCH LINE - SEE SHEET C9.04





BKF 100 YEARS ENGINEERS, SURVEYORS, PLANNERS



PIER 70 SUD PHASE 1 IMPROVEMENT PLANS SIGNAGE AND STRIPING PLAN - 22ND

Table with columns: No., Date, Revisions, Job No. 20170209

SIGNING AND STRIPING KEYNOTES:

- 1 "STOP" SIGN MUTCD R1-1
2 2' WHITE CONTINENTAL CROSSWALK, 4' O.C. PER SFMTA STANDARDS
3 CROSSWALK STRIPING, SEE LANDSCAPE PLANS
4 4" BROKEN YELLOW LINE
5 PEDESTRIAN CROSSING SIGN MUTCD W11-2 AND W16-7
6 YIELD LINE CALTRANS STANDARD SHEET A24E
7 TYPICAL PARKING STALL MARKING SEE LANDSCAPE PLANS
8 1' WHITE (STOP) LIMIT LINE CALTRANS STANDARD SHEET A24E
9 CAST IRON MEDALLION TRAFFIC MARKER, SLD
10 5 MPH LEFT TURN ADVISORY SIGN MUTCD W1-1A
11 5 MPH RIGHT TURN ADVISORY SIGN MUTCD W1-1A
12 "DO NOT ENTER" SIGN MUTCD R5-1
13 NO RIGHT TURN SIGN MUTCD R3-1
14 NO LEFT TURN SIGN MUTCD R3-2
15 LOADING ZONE. CROSSHATCH AT LOADING ZONE IS TO DEPICT THE EXTENTS OF THE STALL AND IS SHOWN FOR REFERENCE ONLY AND IS NOT TO BE STRIPED.
16 ACCESSIBLE LOADING ZONE, 4" BLUE BORDER WITH 4" BLUE LINE DIAGONALS AT 3' MAX ON CENTER, CALTRANS STANDARD SHEET A90B
17 BIKE SHARE AREA AND SIGNAGE BY OWNER
18 PAINT COLOR CURB. COLOR AND LIMITS PER PLAN
19 ACCESSIBLE PARKING ONLY SIGN CALTRANS STANDARD SHEET A90B, NOTE 11
20 BIKE LANE LINE, 6" WHITE LINE CALTRANS STANDARD SHEET A20D, DETAIL 39 AND 39A
21 PASSENGER LOADING ZONE ONLY SIGN MUTCD R25C
22 STREET NAME SIGN MUTCD D3-1
23 MOTORCYCLE PARKING, 4" SOLID WHITE LINE 8'X4' STALL.
24 HELMETED BICYCLIST SYMBOL AND ARROW MUTCD FIGURE 9C-3B
25 SHARED LANE MARKING MUTCD FIGURE 9C-9
26 4" DOUBLE YELLOW LINE
27 4" YELLOW CENTERLINE
28 "NO PARKING-FIRE LANE" SIGN MUTCD ITEM# X2479
29 "NO OUTLET" SIGN MUTCD W14-2
30 PASSENGER LOADING ZONE SIGN MUTCD R25C (REMOVE "ONLY" FROM SIGN AS THIS IS SHARED LOADING)
31 PERMITTED COMMUTER SHUTTLE LOADING SIGN
32 LEFT TURN ONLY SIGN MUTCD R3-5
33 ONE WAY SIGN MUTCD R6-1
34 PAVEMENT MARKINGS AT TABLED CROSSWALK MUTCD FIGURE 3B-30
35 "BICYCLE BAY TRAIL RIGHT TURN ONLY" SIGN
36 "ACCESSIBLE ROUTE" (WITH LEFT ARROW & GRAPHIC) SIGN
37 "ACCESSIBLE ROUTE" (WITH RIGHT ARROW & GRAPHIC) SIGN

LEGEND:

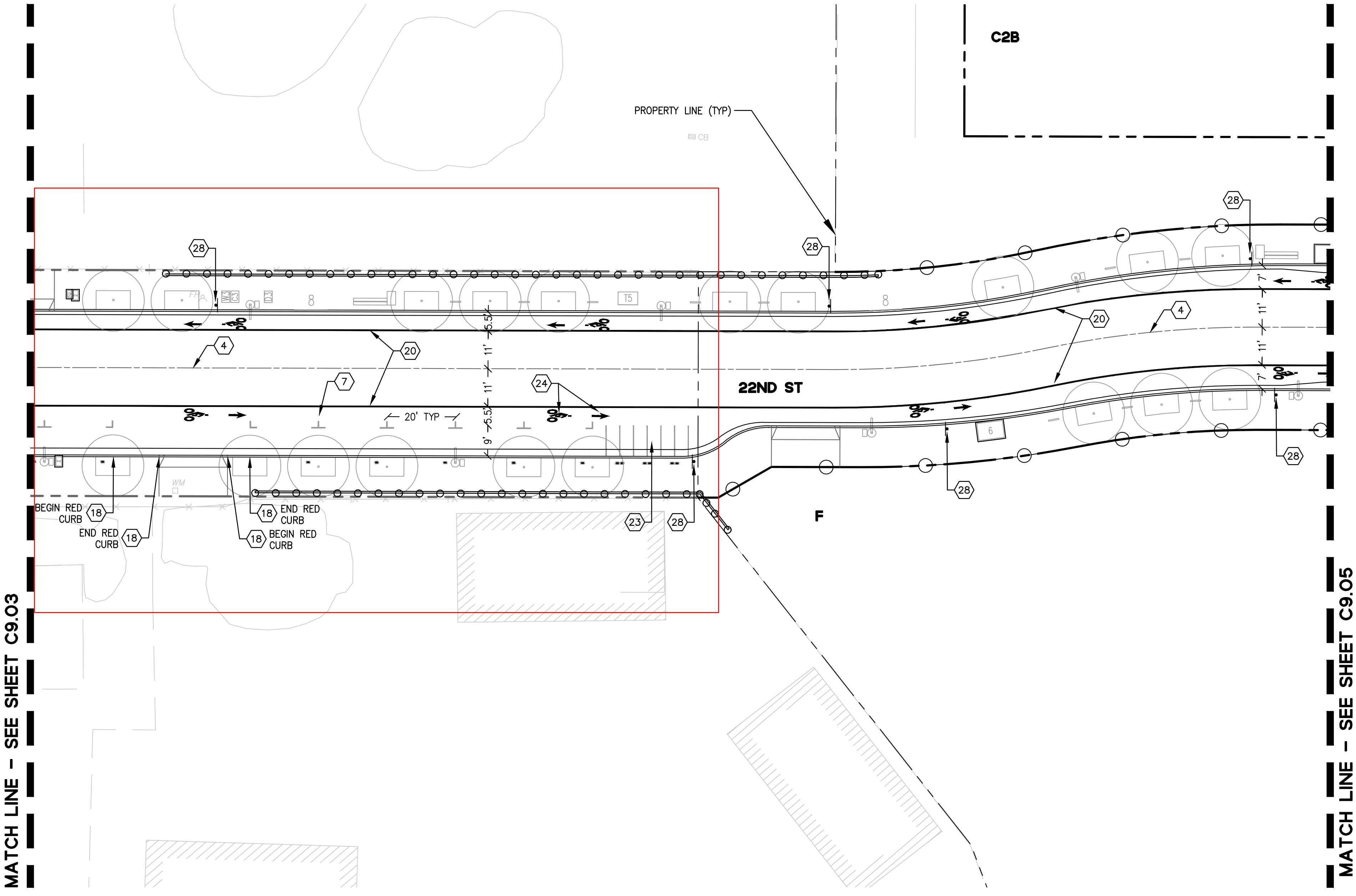
- INSTALL BIKE LANE ARROW CALTRANS STANDARD SHEET A24A
INSTALL "STOP" PAVEMENT MARKING CALTRANS STANDARD SHEET A24D
INSTALL BIKE LANE SYMBOL WITH PERSON CALTRANS STANDARD SHEET A24C
INSTALL SHARED ROADWAY BICYCLE MARKING CALTRANS STANDARD SHEET A24C
INSTALL MUTCD SIGN

NOTES:

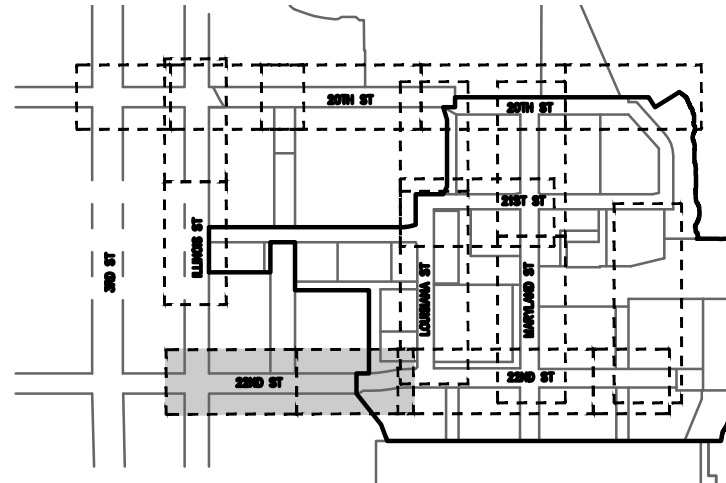
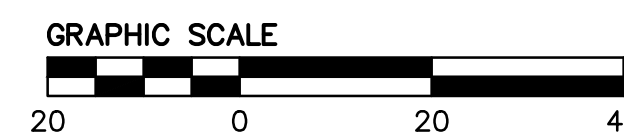
- 1. ALL TRAFFIC STRIPING AND PAVEMENT MARKINGS TO CONFORM TO CALTRANS STANDARD UNIFORM DATED 2015 AND THE CALIFORNIA MANUAL ON UNIFORM TRAFFIC CONTROL DEVICES (CA MUTCD) DATED 2014 UNLESS OTHERWISE NOTED.
2. ANY TRAFFIC STRIPING, PAVEMENT MARKINGS, PAVEMENT SURFACE, ETC. TO REMAIN THAT IS DAMAGED OR DESTROYED BY THE CONTRACTOR'S WORK SHALL BE REPLACED BY THE CONTRACTOR TO THE SATISFACTION OF THE CITY ENGINEER AT THE CONTRACTOR'S EXPENSE.
3. ALL PAVEMENT STRIPING AND MARKINGS SHALL BE THERMOPLASTIC CONFORMING TO CALTRANS STANDARD SPECIFICATIONS, UNLESS OTHERWISE NOTED.
4. ALL PERMANENT TRAFFIC SIGNS, CURB PAINTING & PAVEMENT MARKINGS SHOWN ON THESE PLANS SHALL BE FURNISHED AND INSTALLED BY THE CONTRACTOR. APPROVAL CONTRACTOR SHALL FURNISH, INSTALL, AND MAINTAIN SIGNING AND STRIPING AS REQUIRED IN ACCORDANCE WITH SFMTA AND CALTRANS STANDARDS. SFMTA PERMITS THE USE OF TEMPORARY STRIPING TAPE FOR UP TO 30 DAYS; ALL STRIPING INSTALLATION EXCEEDING THAT DURATION SHALL BE THERMOPLASTIC.
5. PRIOR TO START OF CONSTRUCTION, CONTRACTOR SHALL SUBMIT A COMPLETE SET OF CONSTRUCTION SIGNING AND STRIPING PLANS TO SFMTA FOR APPROVAL. CONTRACTOR SHALL FURNISH, INSTALL, AND MAINTAIN SIGNING AND STRIPING AS REQUIRED IN ACCORDANCE WITH SFMTA AND CALTRANS STANDARDS. SFMTA PERMITS THE USE OF TEMPORARY STRIPING TAPE FOR UP TO 30 DAYS; ALL STRIPING INSTALLATION EXCEEDING THAT DURATION SHALL BE THERMOPLASTIC.
6. ALL CONFLICTING STRIPING, PAVEMENT MARKERS, AND PAVEMENT MARKINGS SHALL BE REMOVED AS REQUIRED BY SFMTA IN ACCORDANCE WITH SFMTA APPROVED PROCEDURES.
7. STREETS SHALL NOT BE OPENED FOR PUBLIC USE UNTIL ALL TEMPORARY OR PERMANENT STRIPING AND TRAFFIC SIGNAL EQUIPMENT IS INSPECTED AND ACCEPTED BY SFMTA.

GENERAL NOTES:

- 1. LOCATIONS OF EXISTING SIGNS, STRIPING, AND PAVEMENT MARKERS ARE APPROXIMATE ONLY. NEW ROADSIDE SIGNS SHALL CONFORM TO THE LATEST PROVISIONS OF THE CALIFORNIA MANUAL ON UNIFORM TRAFFIC CONTROL DEVICES (CA MUTCD) AND CCSF STANDARD PLANS AND THE PROJECT SPECIAL PROVISIONS.
2. FOR PARKING METER LOCATIONS, SEE LANDSCAPE PLANS.
3. A SPECIAL TRAFFIC PERMIT (STP) IS REQUIRED IF THE CONTRACTOR CANNOT COMPLY WITH THE BLUE BOOK REGULATIONS.



22ND STREET SCALE: HORIZONTAL 1" = 20'



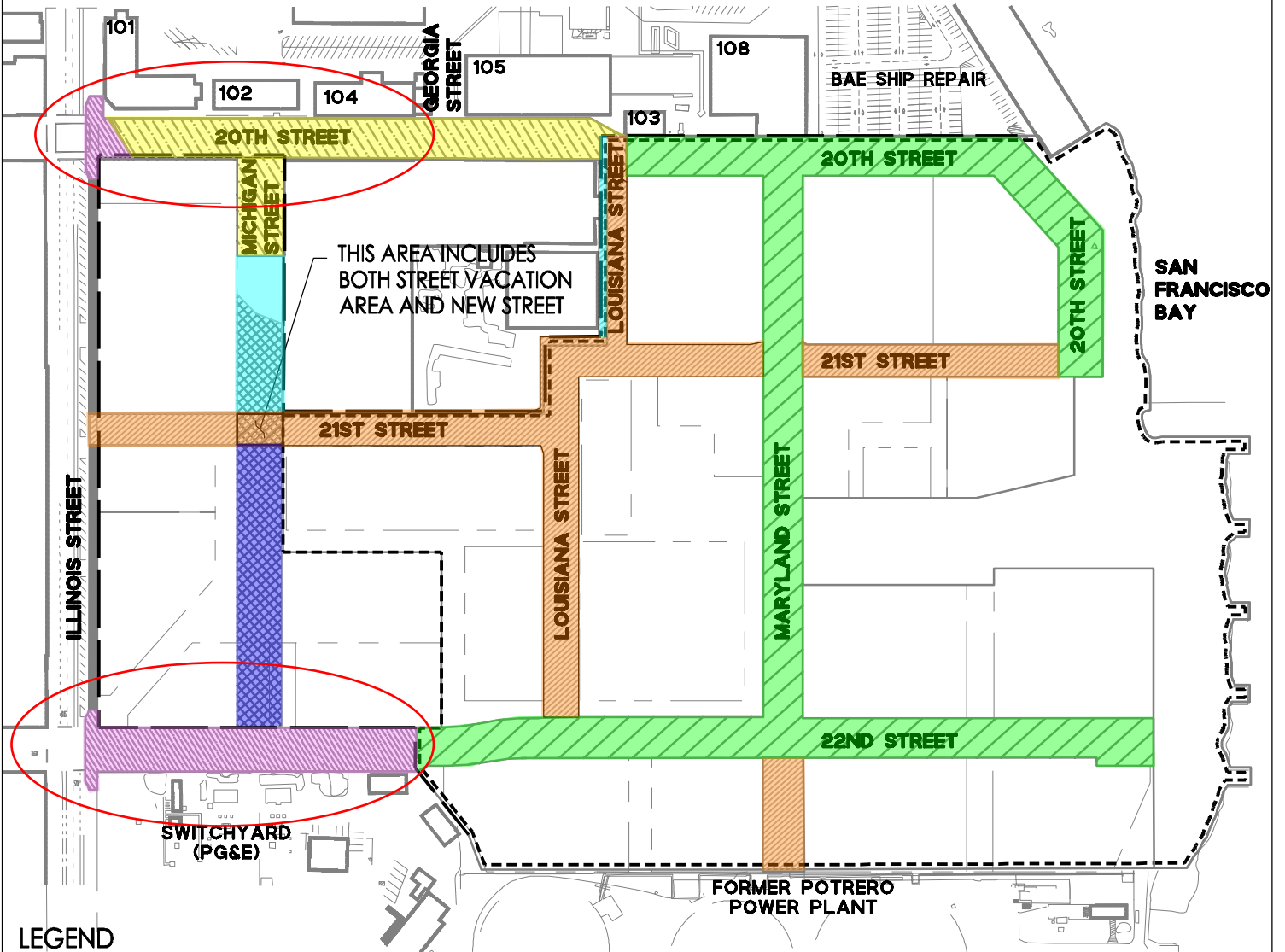
DRAWING NAME: Z:\AGS\project\2017\AGS-17-016 Forest City Pier 70 (BKF)\5_Production\1_Drawings\2_Sheets\Street Improvement\P70-C9.00 Striping Plan.dwg PLOT DATE: 11-13-18 PLOTTED BY: michael.ngo

MATCH LINE - SEE SHEET C9.03

MATCH LINE - SEE SHEET C9.05

THIRD SUBMITTAL

KEY FOR STREET OWNERSHIP [EXISTING]



LEGEND

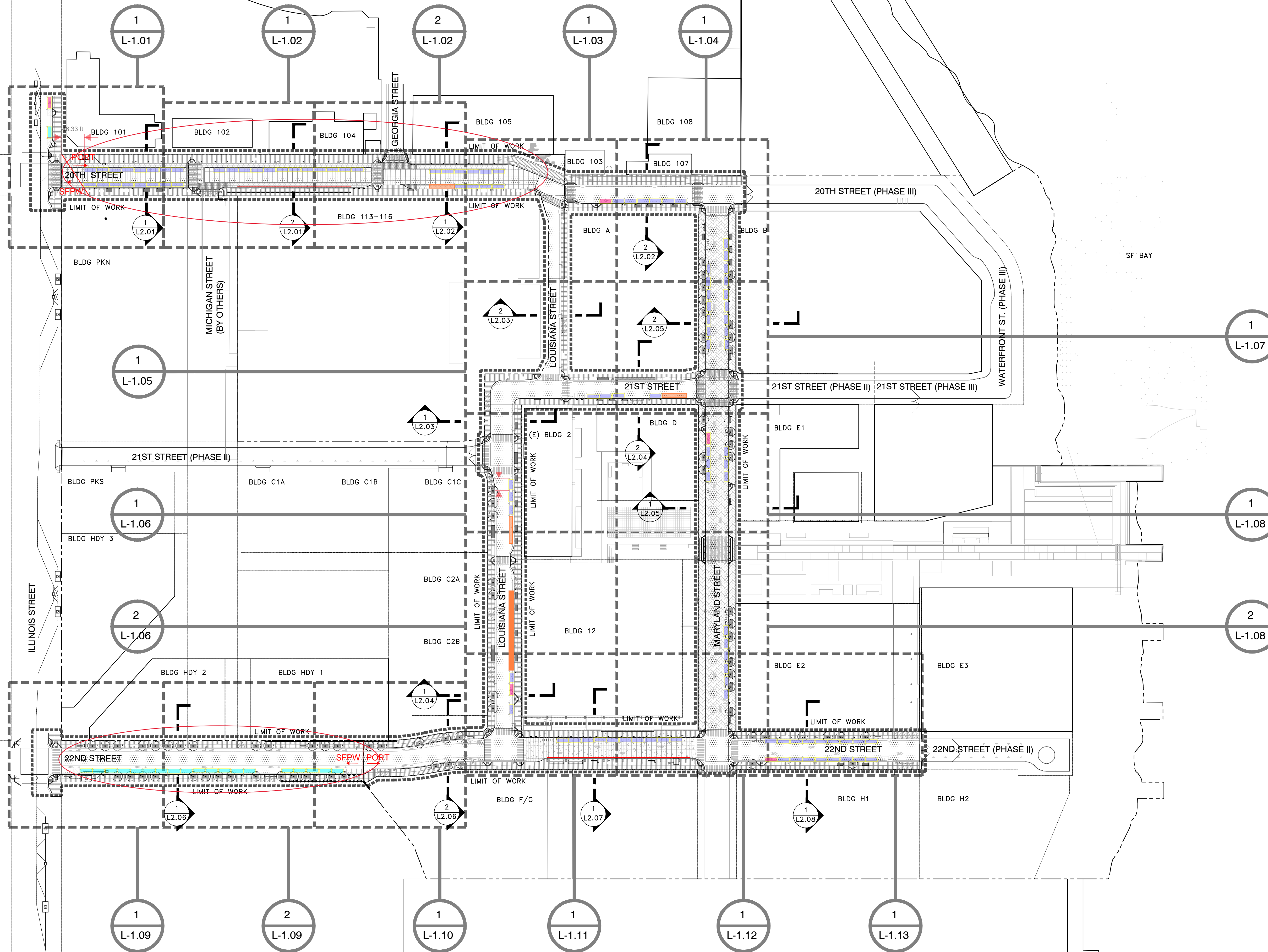
- PIER 70 SUD BOUNDARY
- PROPOSED DEVELOPMENT PARCEL
- 28-ACRE SITE BOUNDARY
- NEW STREET - Port Owned / No State Trust
- NEW STREET WITH PUBLIC TRUST OVERLAY - Port Owned / State Trust
- EXISTING STREET TO BE REPAVED - City Owned
- EXISTING STREET TO BE REPAVED WITH PUBLIC TRUST OVERLAY - Port Owned / State Trust
- STREET VACATION AREA - Port Owned / No State Trust
- SIDEWALK IMPROVEMENTS ONLY (BY OTHERS)
- STREET VACATION AREA - Port Owned / Vacated and not future street



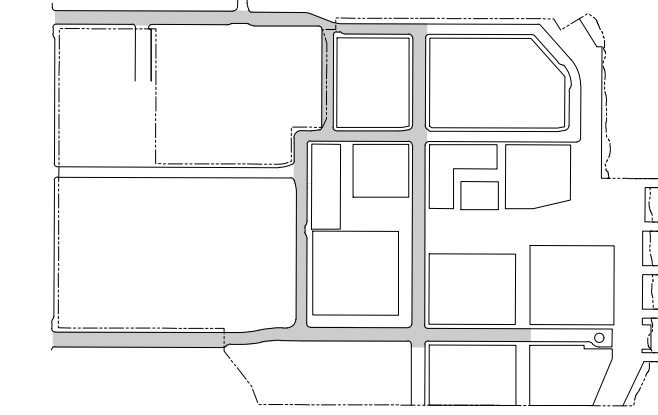
DRAWING NAME: K:\Eng\3\130162\Exhib\ite\Infrastructure Plan\8.0-IP STREET LAYOUT.dwg
PLOT DATE: 08-01-17 PLOTTED BY: rai

ON.

Phase 1 PARKING
 SFPW SIP: 19 metered on 22nd, 1 non-metered on Illinois
 SF Port: 108 metered



KEY PLAN :



STAMP :

REVISION :

NO.	DATE	DESCRIPTION	BY
1.	8/31/18	2ND SUBMITTAL	JCFO
2.	11/13/18	3RD SUBMITTAL	JCFO
3.	01/14/19	4TH SUBMITTAL	JCFO

FOR REVIEW & FILING
NOT FOR CONSTRUCTION

LANDSCAPE ARCHITECT:
JAMES CORNER FIELD OPERATIONS
 633 BATTERY STREET, SUITE 118, SAN FRANCISCO, CA 94111

CONSULTANT TEAM:
 GLS LANDSCAPE ARCHITECTURE
 2077 MISSION STREET, NO.200, SAN FRANCISCO, CA 94110
 BKF ENGINEERS
 105 CALIFORNIA STREET, #650, SAN FRANCISCO, CA 94111
 NABIH YOUSSEF ASSOCIATES
 1 SANSONNE STREET, SUITE 3070, SAN FRANCISCO, CA 94104
 DD PAGANO
 4705 E. CHAPMAN AVE #1, ORANGE, CA 92669
 WALLACE LABS
 360 CORAL CIRCLE #1, SEQUOIA, CA 92285
 HLB LIGHTING DESIGN
 300 BRANNAN STREET #212, SAN FRANCISCO, CA 94107
 GUTTMAN & BLAUEVOET
 2351 POWELL STREET, SAN FRANCISCO, CA 94133
 KATE KEATING ASSOCIATES
 1040 SANSONNE STREET #202, SAN FRANCISCO, CA 94111
 MACCHIATTO
 105 DE HARO STREET, SAN FRANCISCO, CA 94107
 SHEN MILSON & WILKE (SMW)
 33 NEW MONTGOMERY STREET, SUITE 1040, SAN FRANCISCO, CA 94105

CLIENT:
FC PIER 70, LLC
 875 HOWARD STREET, SUITE 330, SAN FRANCISCO, CA 94103

PROJECT NAME
**PIER 70 SUD PHASE 1
 IMPROVEMENT PLANS**

DESCRIPTION: STREETScape PUBLIC REALM
 100% CONSTRUCTION DOCUMENTS

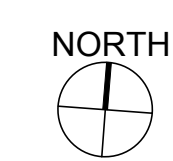
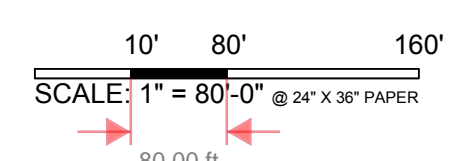
DRAWN: XX CHECKED: XX

DATE: 01.14.2019 SCALE:

DRAWING TITLE:
**LAYOUT AND MATERIAL
 KEY PLAN**

DRAWING NO.
L1.00

All Rights Reserved
 These drawing, concepts, designs and ideas are the property of James Corner Field Operations. They may not be copied, reproduced, disclosed to others or used in connection with any work other than the specified project for which they were prepared, in whole or in part, without the prior written authorization of James Corner Field Operations.



DRAWING NAME: S:\GIS\info\008_GLS_projects\2017\1708_Pier_70_Public_Realm\CAD\GIS\Sheets\4.00 PLANTING AND SOIL PROFILE KEY PLAN.dwg
 PLOT DATE: 01-10-19 PLOTTED BY: faranok