



SFMTA

Final COVID-Response Slow Streets: Chenery and SoMa

SFMTA Board of Directors

May 16, 2023

Slow Streets Program Update

New Materials Coming to All Slow Streets

- Cross-street signs and wayfinding signs
- 15 MPH advisory speed limit signs



Slow Streets Evaluation Report



Slow Streets generally working as low-volume, low-stress streets



12 of 16 Slow Streets meet Board-adopted volume target (1000 VPD)



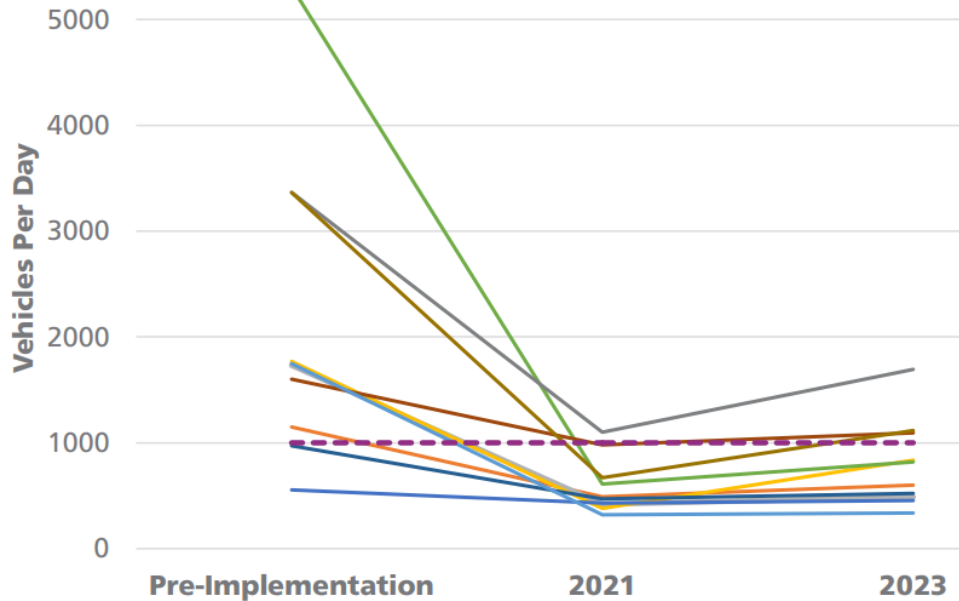
4 of 16 Slow Streets meet Board-adopted speed target (15 MPH)



48% decrease in collisions on Slow Streets since implementation

Slow Streets Vehicle Volumes

Average Daily Traffic (ADT) Trends by Slow Street



Daily Volumes (VPD)

Sanchez Street	320
Cabrillo Street	370
Hearst Avenue	460

Slow Street Average	850
---------------------	-----

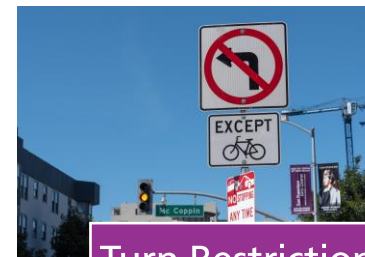
Minnesota Street	1,090
Noe Street	1,690
20th Street	2,240



Traffic Diverters

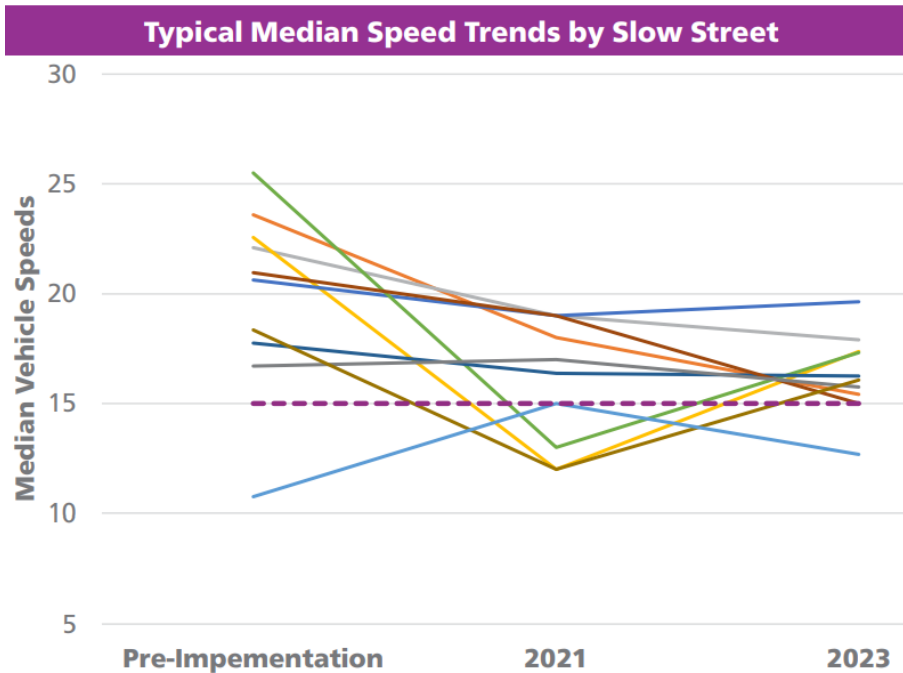


Modal Filters



Turn Restrictions

Slow Streets Vehicle Speeds



Median Speeds (MPH)

Sanchez Street 13
 Shotwell Street 14
 23rd Avenue 15

Slow Street Average 17

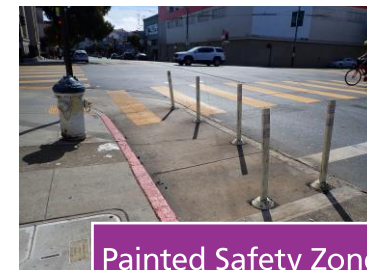
Cabrillo Street 18
 Arlington Street 19
 Hearst Avenue 20



Speed Humps



Neckdowns



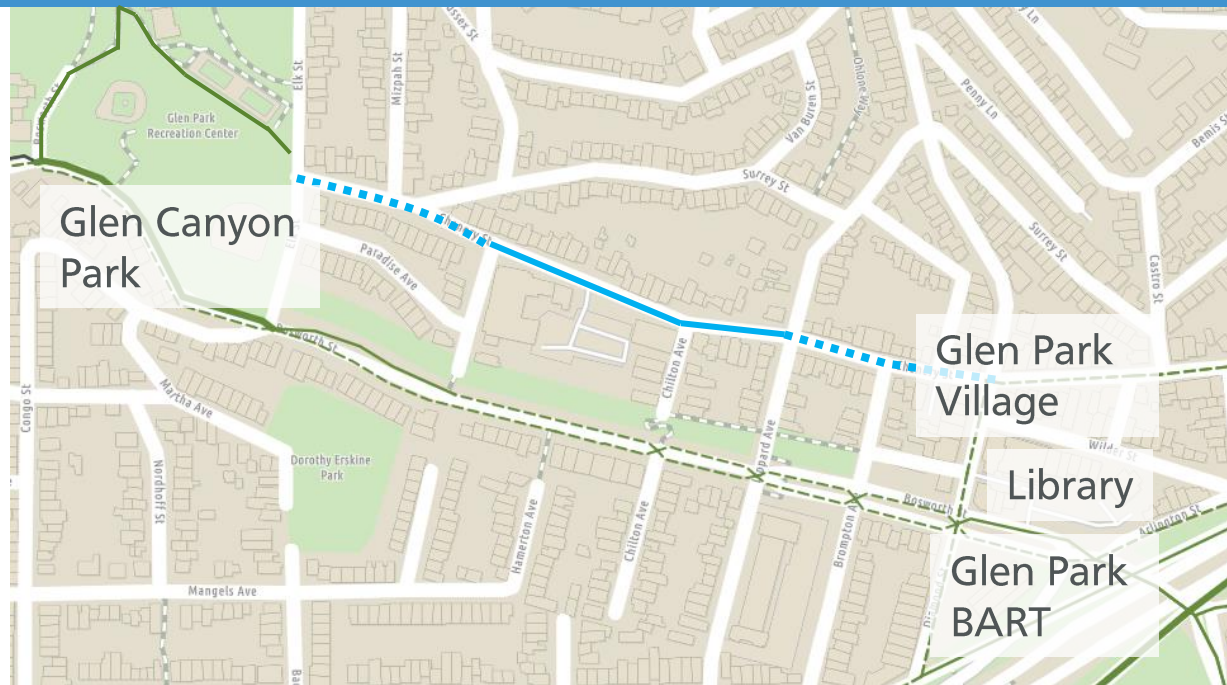
Painted Safety Zones

Closing the Book on COVID-Response Slow Streets

- **2020 – 2022:** SFMTA implemented over 30 COVID-response Slow Streets
- **Dec 2022:** SFMTA Board adopts permanent program
 - 16 corridors approved
- **Winter 2023:** Targeted analysis and outreach on several remaining emergency Slow Streets
- **May 2023:** Final chapter for COVID-Response Slow Streets
- **Future:** Slow Streets expansion considered as part of Active Communities Plan

Chenery Slow Street

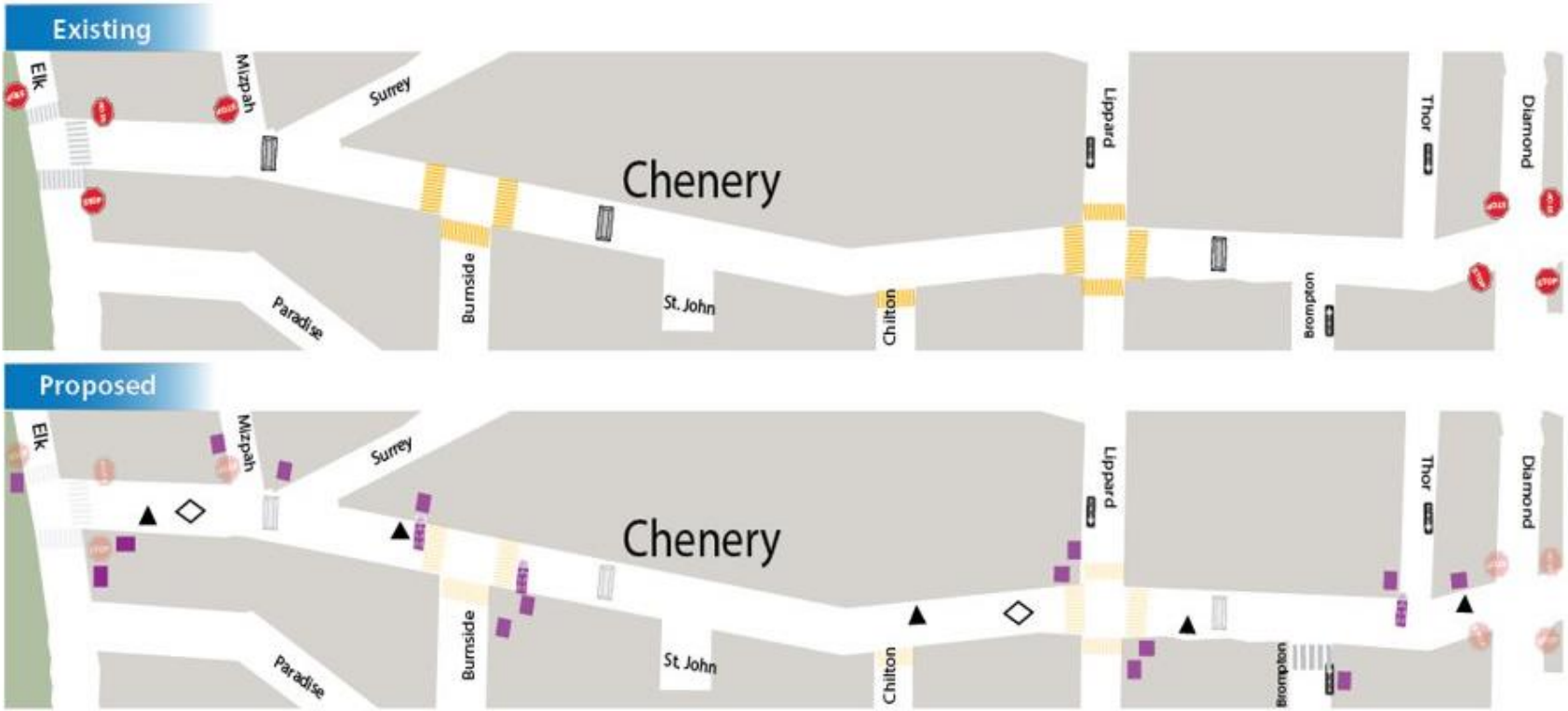
- COVID-Response Slow Street: Burnside to Lippard ———
- Proposed Slow Street: Elk to Diamond ······
- Connect Glen Canyon Park & Glen Park Village
- Bike network connection to Diamond Street and O'Shaughnessy (via Glen Canyon Park)




Proposed Chenery Slow Street

← West to Elk Street

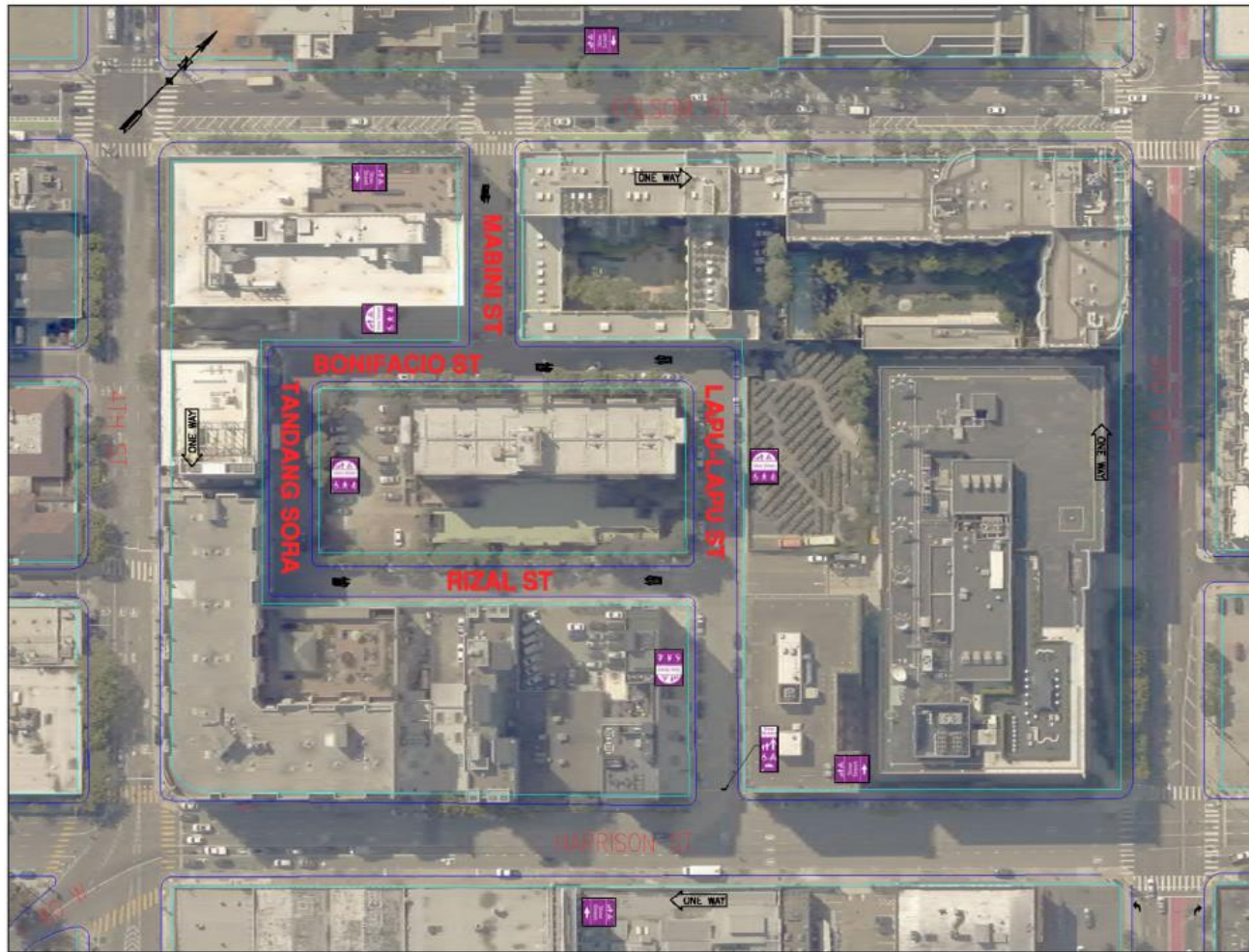
East to Diamond Street →







Legend

-  Stop Sign
-  Speed Hump
-  Slow Streets Delineators
-  Slow Streets Wayfinding Signage
-  Slow Streets Pavement Marking
-  Continental Crosswalk
-  Speed Cushion
-  Midblock Delineator / Roadway Narrowing
- 
-  Continental Crosswalk (School Zone)

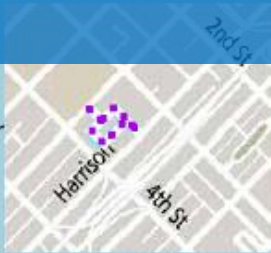
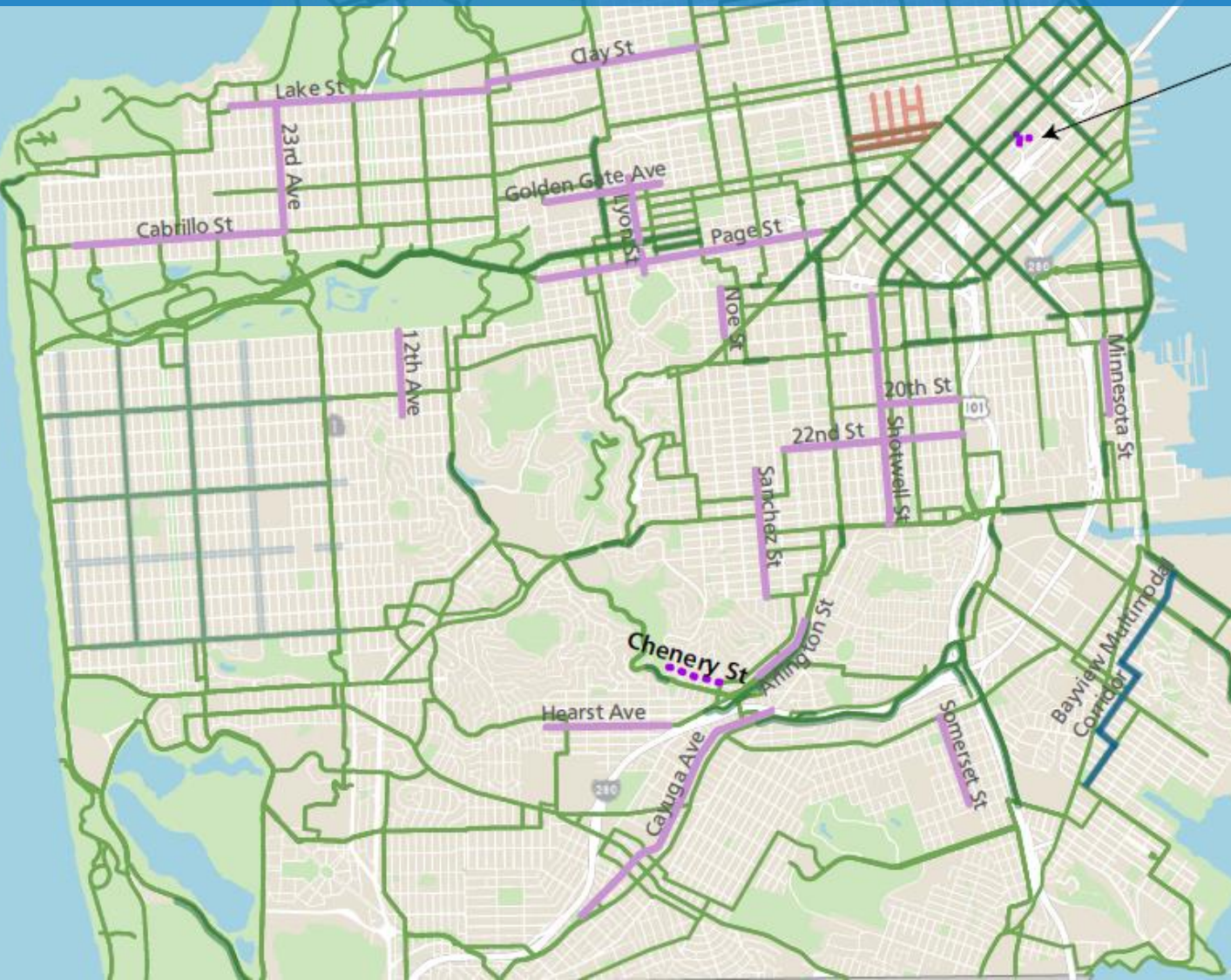
SoMa Slow Streets



SLOW STREETS TREATMENTS

-  = DELINEATOR DIVERTER
-  = PAVEMENT STENCIL
-  = IDENTIFICATION SIGN
-  = WAYFINDING SIGN

Map of Corridors



Lapu-Lapu, Rizal, Tandang Sora, Bonifacio, and Mabini streets (SoMa Slow Streets)

LEGEND

- Existing Bike Network
- Protected Bikeways
- Slow Streets**
- Adopted Slow Streets
- Recommended Slow Streets
- Other Related Projects**
- Proposed Sunset Neighborways
- Bayview Multimodal Community Corridor
- Tenderloin Traffic Safety Improvements

Next Steps

Summer 2023



Implement Slow Streets designs for Chenery and SoMa

Fall 2023



Active Communities Plan:
Outreach and draft recommendations

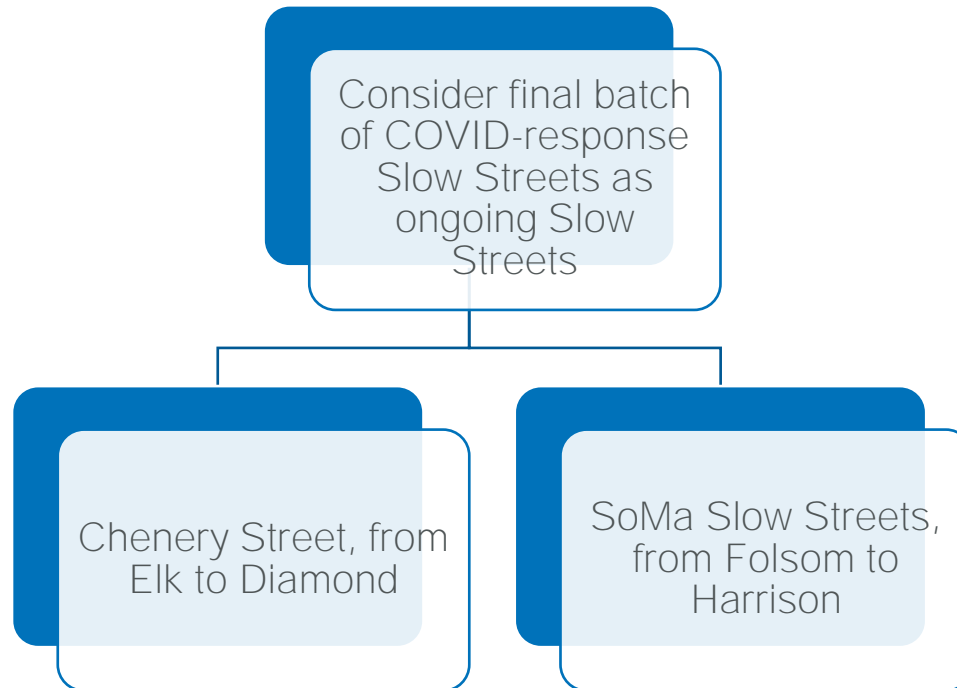
sfmta.com/activecommunities

Early 2024



Coordinate additional Slow Streets corridors with Active Communities Plan adoption

Board Action



Streets added to the Slow Streets Program would be evaluated and held to the SFMTA Board adopted speed and volume targets for Slow Streets

