

SFMTA - TASC SUMMARY SHEET

PreStaff_Date: 10/28/2021 Requested_by: SFFD Handled: Larry Yee ^{LY} Section Head BW	<input type="checkbox"/> Public Hearing Consent <input checked="" type="checkbox"/> Public Hearing Regular <input type="checkbox"/> Informational / Other <small>PH - Regular</small>	No objections: _____ Item Held: _____ Other: _____
--	---	---

Location: Various Locations

Subject: Tow-Away, No Parking Anytime

PROPOSAL / REQUEST:

RESCIND – NO PARKING ANYTIME

Brady Street, west side, from Market Street to Stevenson Street
Brady Street, east side, from Stevenson Street to Colton Street
Colton Street, north side, from Brady Street to Colusa Place
Colusa Place, east side, from Colton Street to Chase Court
Colusa Place, west side, from Colton Street to Chase Court
Chase Court, south side, from Colusa Place to 80 feet westerly

ESTABLISH – GENERAL METERED PARKING, 9 AM TO 6 PM, MONDAY THROUGH SATURDAY

Brady Street, east side, from Stevenson Street to Colton Street

ESTABLISH – TOW-AWAY, NO PARKING ANYTIME

Brady Street, west side, from Market Street to Stevenson Street
Brady Street, west side, from Stevenson Street to Colton Street (removes 5 metered parking spaces, parking relocated to the east side of Brady Street)
Colton Street, north side, from Brady Street to Colusa Place
Colton Street, south side, from Brady Street to Colusa Place (removes 8 parking spaces)
Colusa Place, east side, from Colton Street to Chase Court

BACKGROUND INFORMATION / COMMENTS

Revision to parking layout on Brady Street between Stevenson and Colton Street is to address loading needs of the building. Revisions to parking restrictions are to address SFFD turning clearances/requirements at Brady Street, Colton Street, Colusa Place, Chase Court.

HEARING NOTIFICATION AND PROCESSING NOTES:	ENVIRONMENTAL CLEARANCE BY: <input type="checkbox"/> SFMTA <input type="checkbox"/> Attached <input checked="" type="checkbox"/> Pending
---	--

RESCIND – NO PARKING ANYTIME

Brady Street, west side, from Market Street to Stevenson Street

Brady Street, east side, from Stevenson Street to Colton Street

Colton Street, north side, from Brady Street to Colusa Place

Colusa Place, east side, from Colton Street to Chase Court

Colusa Place, west side, from Colton Street to Chase Court

Chase Court, south side, from Colusa Place to 80 feet westerly

ESTABLISH – GENERAL METERED PARKING, 9 AM TO 6 PM, MONDAY THROUGH SATURDAY

Brady Street, east side, from Stevenson Street to Colton Street

ESTABLISH – TOW-AWAY, NO PARKING ANYTIME

Brady Street, west side, from Market Street to Stevenson Street

Brady Street, west side, from Stevenson Street to Colton Street (removes 5 metered parking spaces, parking relocated to the east side of Brady Street)

Colton Street, north side, from Brady Street to Colusa Place

Colton Street, south side, from Brady Street to Colusa Place (removes 8 parking spaces)

Colusa Place, east side, from Colton Street to Chase Court

Colusa Place, west side, from Colton Street to Chase Court

Chase Court, north side, from Colusa Place to 80 feet westerly (removes 4 parking spaces)

Chase Court, south side, from Colusa Place to 80 feet westerly

Stevenson Street, south side, from 12th Street to 80 feet westerly (removes 4 parking spaces)

ESTABLISH – RED ZONE

Brady Street, east side, from 10 feet to 27 feet south of Market Street (extends existing red zone).

Brady Street, west side, from Colton Street to 40 feet southerly (removes 2 parking spaces)

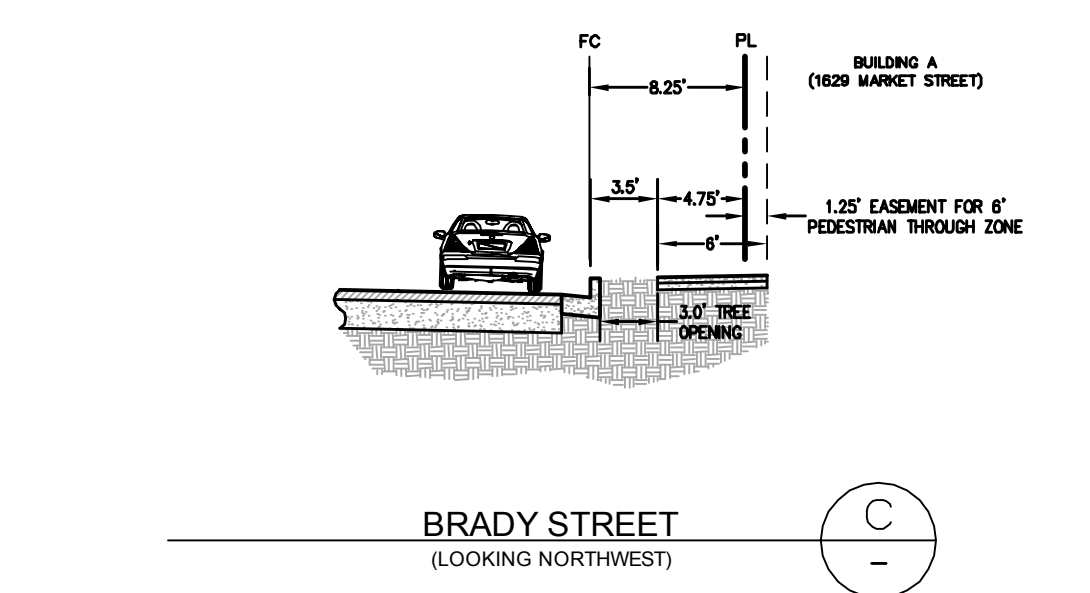
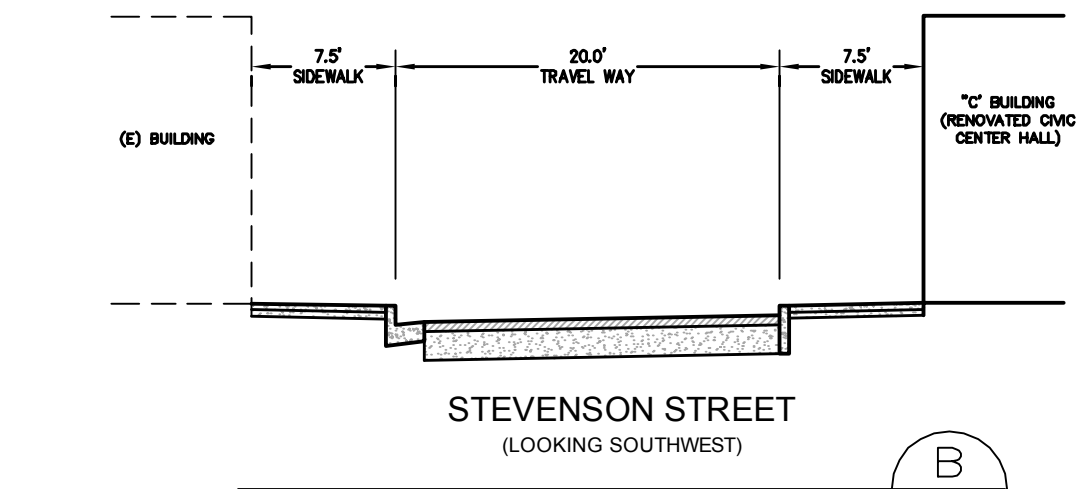
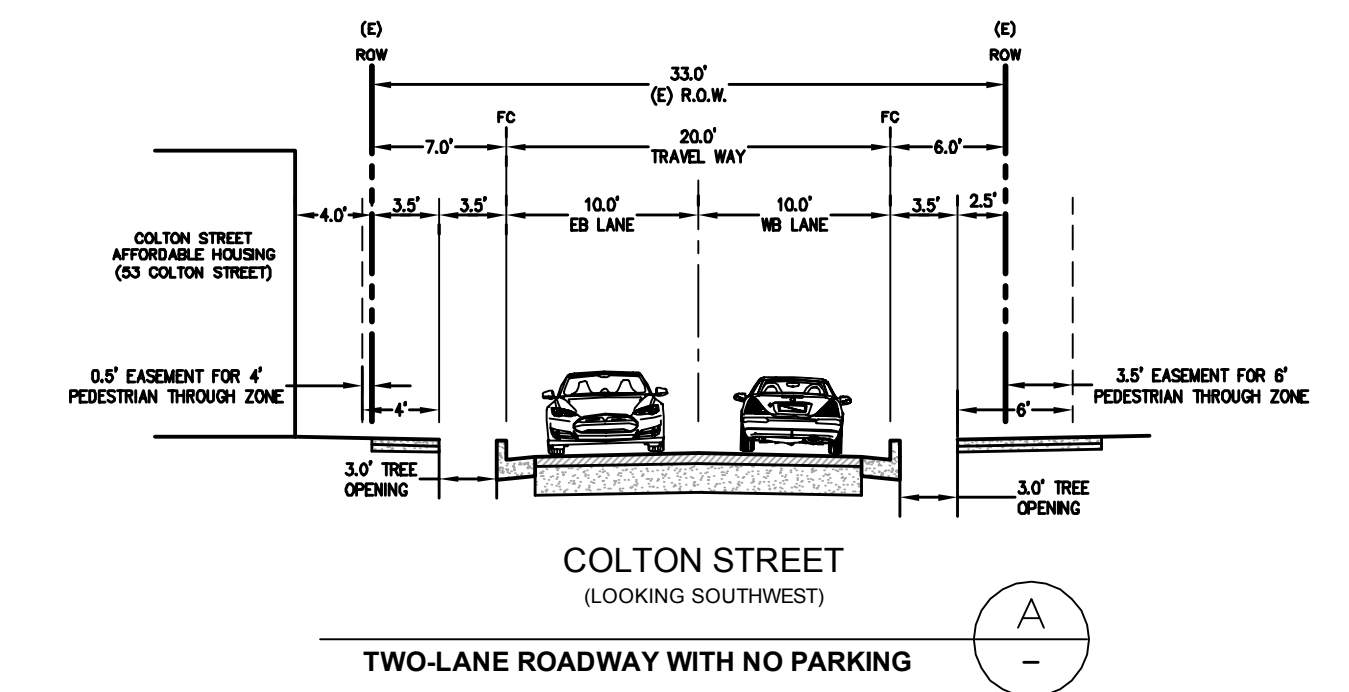
(Supervisor District 6)

Red Zone and Tow-Away are proposed due to SF Fire's access needed related to the Plumber's Union Development Project.

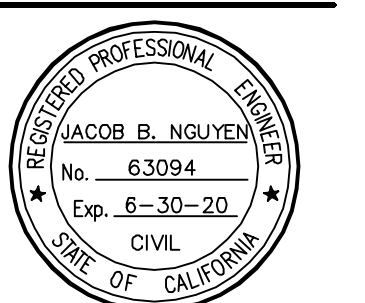
Larry Yee; Larry.Yee@sfmta.com

LEGEND

BUILDINGS



REV	ISSUE	DATE
	SITE PERMIT	04.26.19
	FINAL SD	05.16.19
DD1		08.06.19
DD2		08.27.19
DD3		08.29.19
CD1		09.26.19
CD2		11.14.19
	SOPH CHECK SET	01.16.20
CD3		03.17.20
PROGRESS		05.08.20
CD4		05.13.20
ESCP		10.09.20
	Color Colors	05.20.21



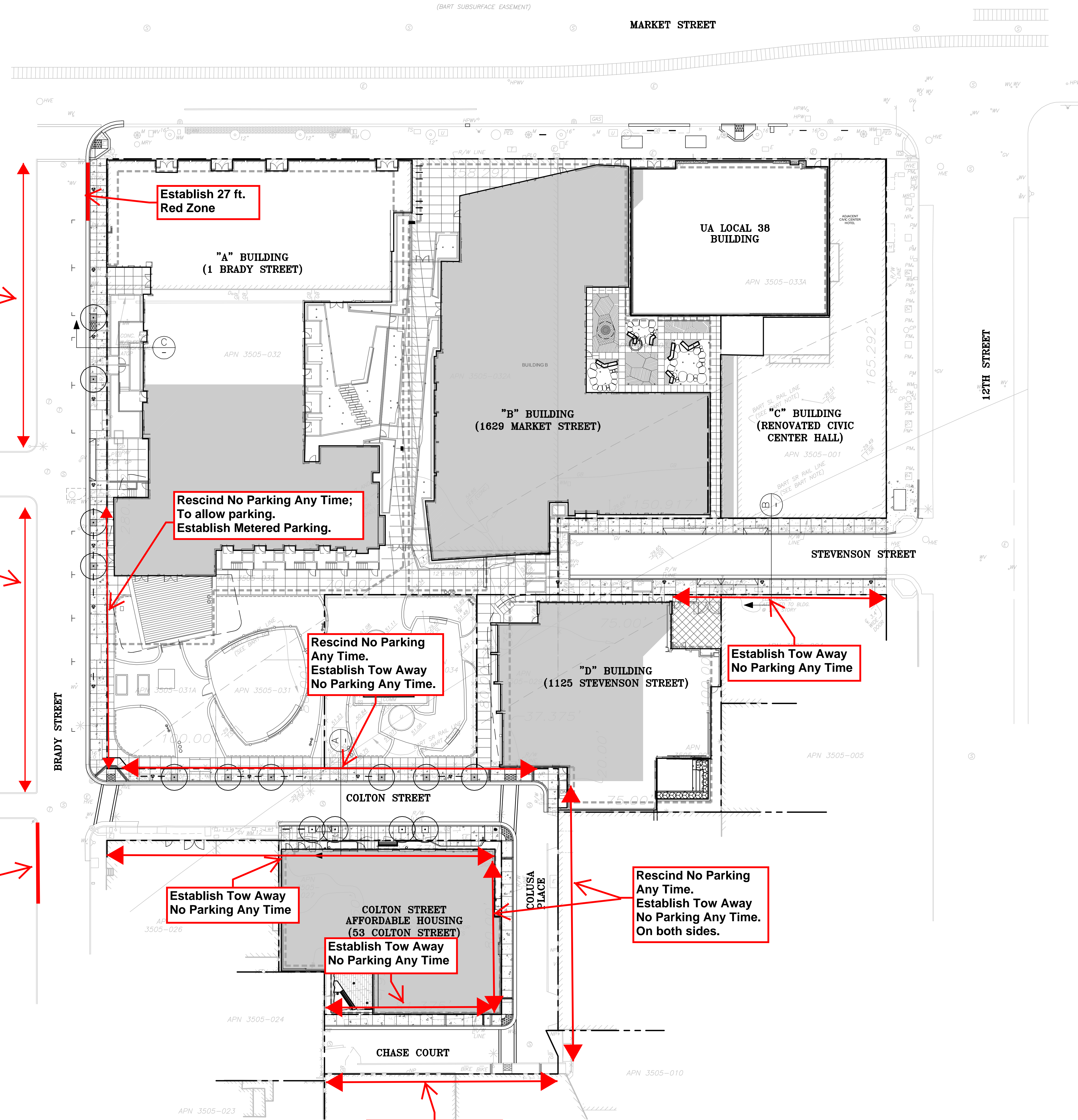
STAMP
ALL DRAWINGS AND WRITTEN MATERIAL
APPROVED HEREIN CONSTITUTE ORIGINAL
AND UNPUBLISHED WORK OF THE
ARCHITECT AND MAY NOT BE REPRODUCED
USED OR DISCLOSED WITHOUT THE
WRITTEN CONSENT OF THE ARCHITECT.

COLOR CURB EXHIBIT

SHEET TITLE
SCALE 1"=20'
PROJ. # 1908 DRAWN BY CU
SHEET SIZE: 30 x 45

MARKET STREET

(BART SUBSURFACE EASEMENT)



Establish 27 ft. Red Zone

Rescind No Parking Any Time. Establish Tow Away No Parking Any Time.

Establish Tow Away No Parking Any Time. Parking will be flipped to the east side of Brady St.

Establish 40 ft. Red Zone

Rescind No Parking Any Time; To allow parking. Establish Metered Parking.

Rescind No Parking Any Time. Establish Tow Away No Parking Any Time.

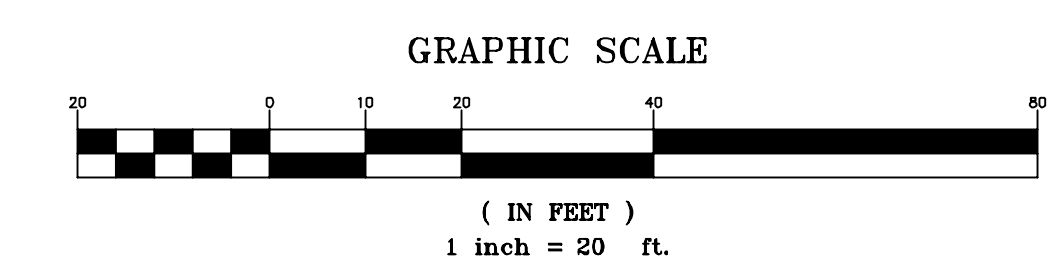
Establish Tow Away No Parking Any Time

Establish Tow Away No Parking Any Time

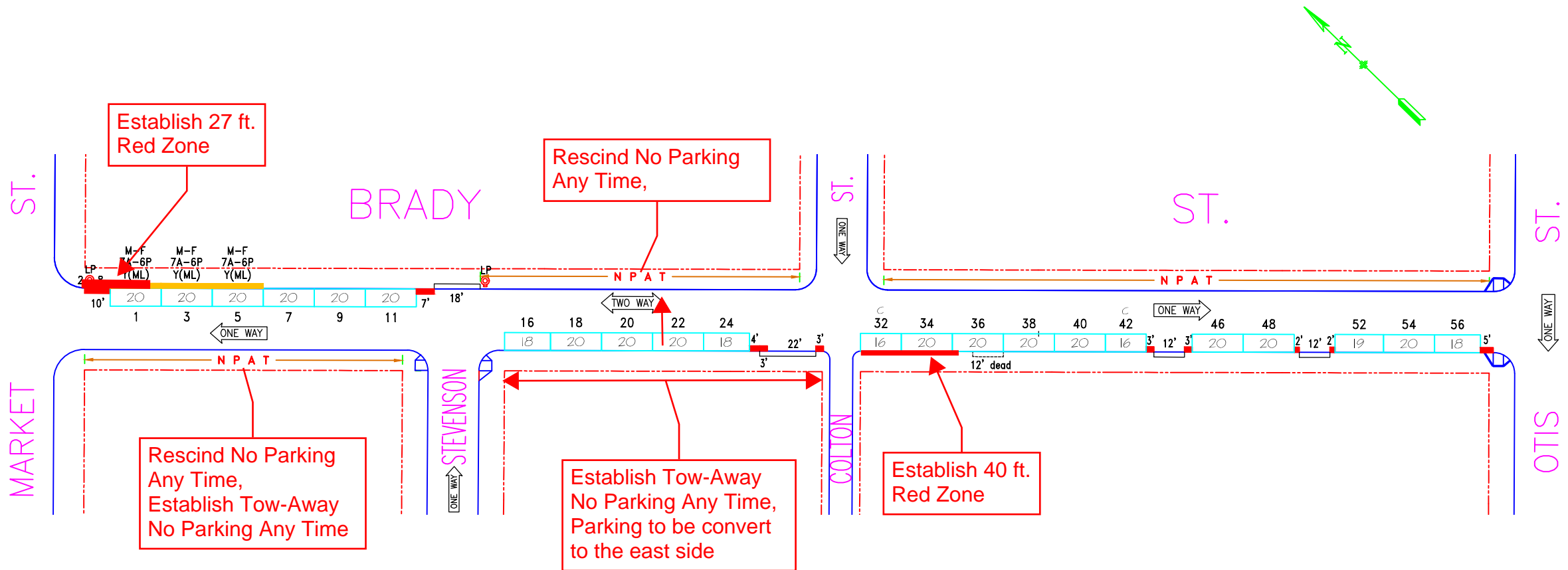
Establish Tow Away No Parking Any Time

Rescind No Parking Any Time. Establish Tow Away No Parking Any Time. On both sides.

Rescind No Parking Any Time. Establish Tow Away No Parking Any Time.



MAYOR ED 17-02 PRIORITY PERMIT



C - COMPACT SPACE

NO.	REVISION DESCRIPTION	BY	DATE	DIR/RES														
1	Install parking meters - B/S	SFpark	11/8/10	10-124														
2	Establish ML on #1,3,5 N/S	JB	1/18/20	191015.131														



SAN FRANCISCO MUNICIPAL TRANSPORTATION AGENCY
CITY AND COUNTY OF SAN FRANCISCO
 PARKING METER SPACES

SIDE	TOW-AWAY		METER CT.		GENERAL			LOADING		METERED SPACES								TOTAL
	AM	PM	SS	MS	GMP	MC	TIMES	DAYS	ML	MTL	6-W	15 MIN	30 MIN	1 HR	2 HR	10 HR	NO LIMIT	
ODD			6		3		9A-6P	M-SA	3				3				3	6
EVEN			16		16		9A-6P	M-SA									16	16

BRADY ST. (BRD, 341)
(UNIT) BLOCK
 Meters #341-00XXY
MARKET ST. TO OTIS ST.

SCALE: **1" = 50'** DATE: **9/15/10** BY: **JB**

AREA
3

TECHNICAL MEMORANDUM

Date: March 30, 2020 **BKF Job Number:** 20176049

Deliver To: Phillip Wong

Company: San Francisco Office of Economic and Workforce Development

CC: Assistant Fire Marshal Mike Patt
Fire Protection Engineer Kamal Andrawes (SFFD)
Kristin Michael, James Shahamiri, Kim Walton (SFMTA)
Cathal Hennessy (Public Works)

From: Douglas Petersen, PE

Subject: ED 17-02 53 Colton Street – Site Permit SFFD Plan Check Comment
Removal of Parallel Parking Stalls to Accommodate SFFD Apparatus Turns

BACKGROUND:

Fire Protection Engineer Kamal Andrawes from the San Francisco Fire Department (SFFD) provided the following Site Permit plan check comment for the 53 Colton Street Affordable Housing project:

"Streets width needed to accommodate fire truck turn of 90-degrees shall be designed Latest Vehicle Templates developed by MTA. Please provide fire truck turning movements (turning templates) at all the intersections."

SFFD aerial ladder truck and SFFD fire engine truck turning movements were run using AutoTurn at the following intersections: Brady/Market, Brady/Colton, and Brady/Otis. The two SFFD fire engine truck AutoTurn specs are attached for reference.

While it's the developer's intention to retain as many parking stalls as possible for the benefit of local businesses and residential neighbors, unfettered access for SFFD apparatus is critical to the health and safety of our local community

Therefore, in response to SFFD and SFMTA discussions and comments, the Developer has prepared this technical memorandum to propose removal of certain parking spots for SFFD fire life and safety requirements, while also preserving parking benefiting our local businesses and residential neighbors. The Developer requests SFFD and SFMTA approval and sign-off on this proposal to facilitate the Building Permit and Street Improvement Permit process for the ED 17-02 53 Colton Street Project.

ISSUE:

Both fire engine trucks were able to successfully make 90-degree turns at each of the intersections based on AutoTurn modeling, except for the SFFD aerial ladder truck at the Brady/Colton intersection.

Northbound at Brady/Colton

The SFFD aerial ladder truck conflicted with two (2) existing parallel parking stalls on Brady when making a right turn from Brady onto Colton and conflicted with one (1) existing parallel parking stall on Brady when making a right turn from Colton onto Brady as shown in Figure 1.

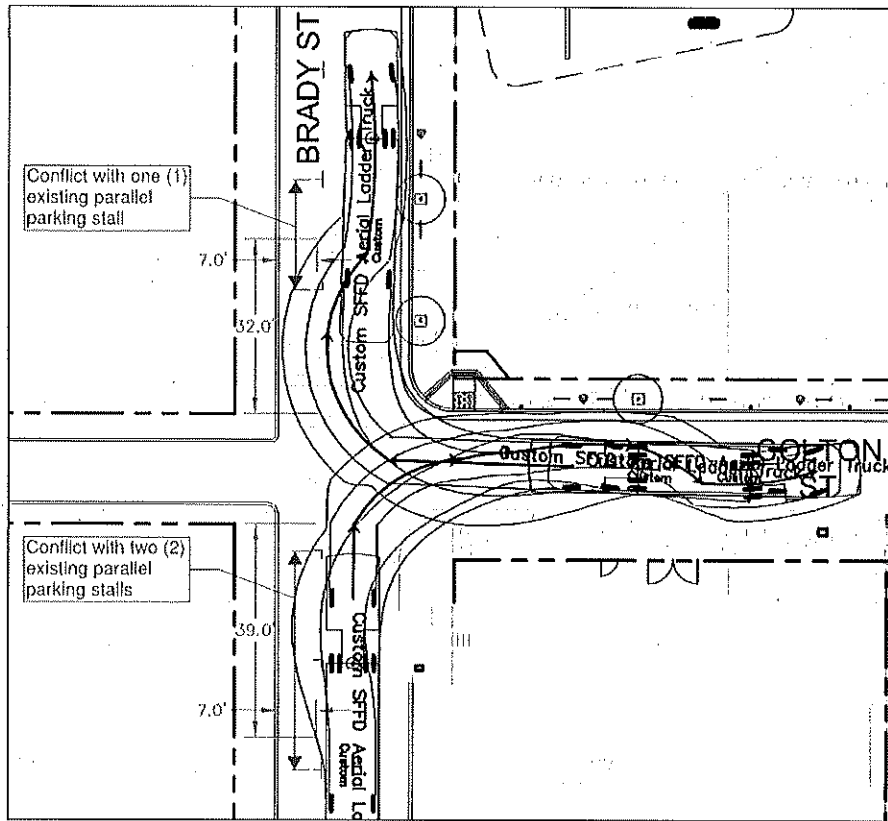


Figure 1. SFFD Aerial Ladder Truck AutoTurn Movements (Northbound at Brady/Colton)

Southbound at Brady/Colton

The SFFD aerial ladder truck conflicted with one (1) existing parallel parking stall on Brady when making a left turn from Brady onto Colton and conflicted with two (2) existing parallel parking stalls on Brady when making a left turn from Colton onto Brady as shown in Figure 2.

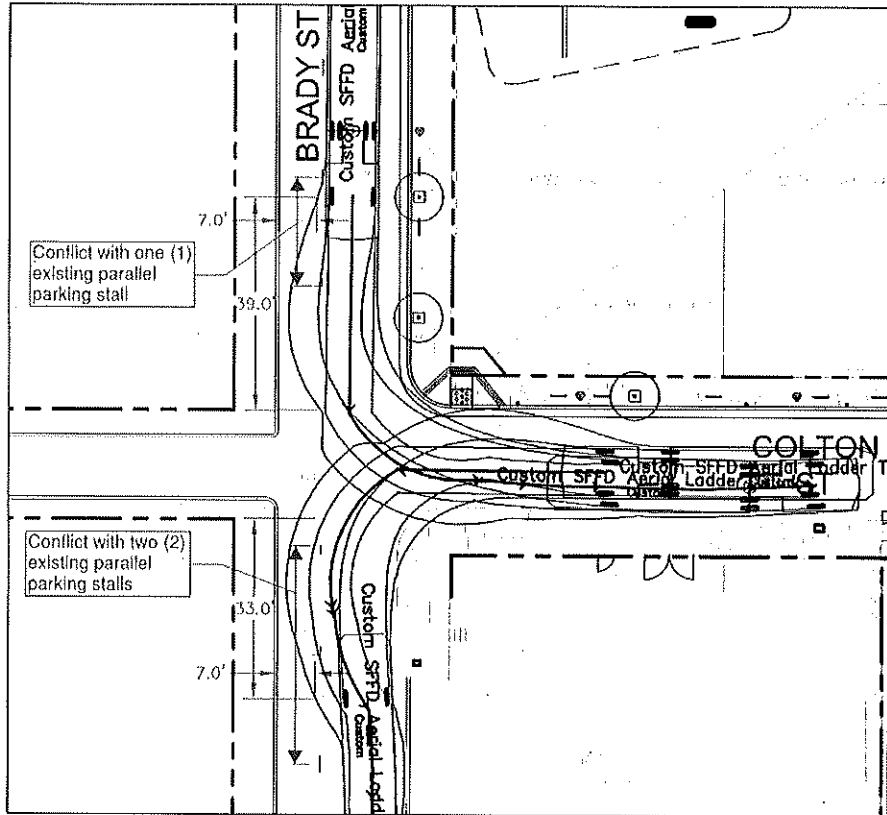


Figure 2. SFFD Aerial Ladder Truck AutoTurn Movements (Southbound at Brady/Colton)

REQUEST:

In order to accommodate the SFFD aerial ladder truck turning movements at the Brady/Colton intersection and address San Francisco Fire Department's Site Permit plan check comment, the project proposes to remove one (1) existing parallel parking stall on Brady north of Colton as shown in Figure 3 below, and two (2) existing parallel parking stalls on Brady south of Colton as shown in Figure 4 below. The existing parking stall striping marks, parking meter, and parking signs at these three stalls will be removed and replaced with red curb and "No Parking Anytime" signs. The remaining existing parallel parking stalls shall remain and continue to serve local businesses and residential neighbors.

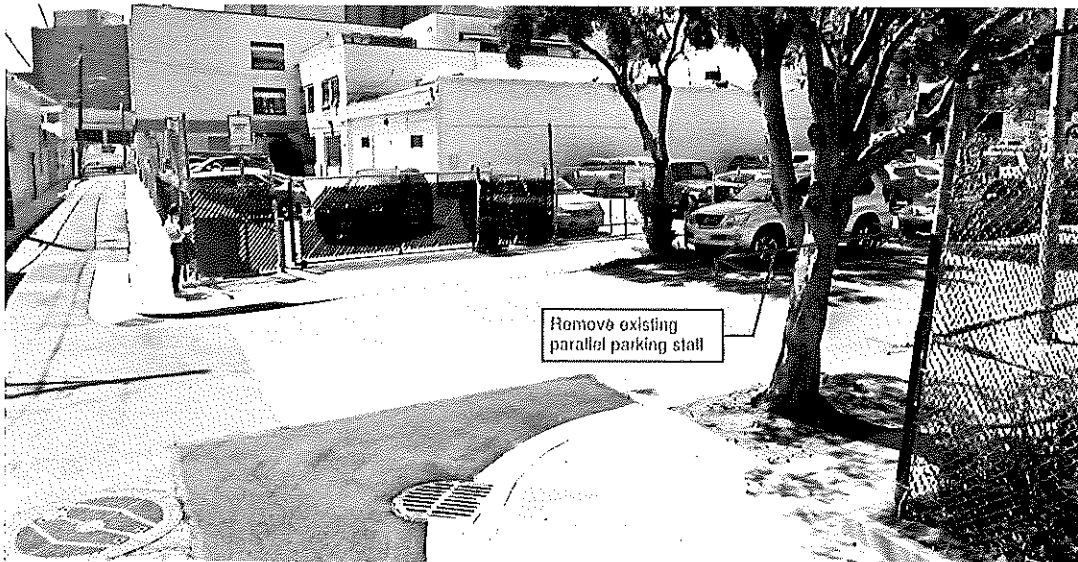


Figure 3. One (1) Existing Parallel Parking Stall on Brady (North of Colton) To Be Removed Due to Conflict with SFFD Aerial Ladder Truck Turning Movements

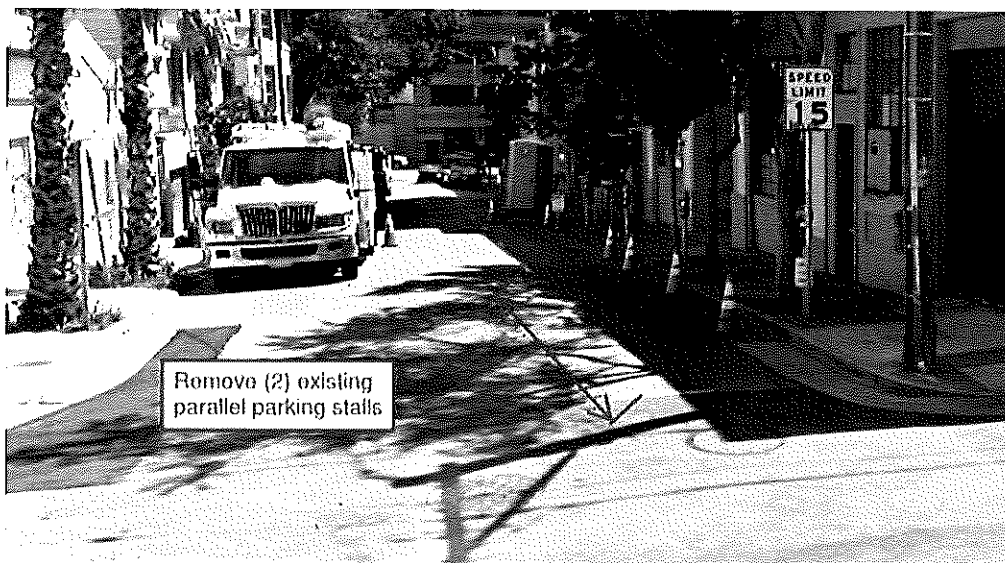


Figure 4. Two (2) Existing Parallel Parking Stalls on Brady (South of Colton) To Be Removed Due to Conflict with SFFD Aerial Ladder Truck Turning Movements

ATTACHMENTS:

- Attachment 1 – Custom SFFD Aerial Ladder Truck AutoTurn specifications
- Attachment 2 – Custom SFFD Fire Engine Truck AutoTurn specifications

ACCEPTED BY SAN FRANCISCO MUNICIPAL TRANSPORTATION AGENCY (SFMTA):



Signature

Kristin Michael

Print Name

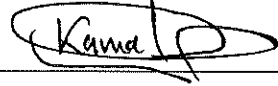
Manager, Development & Transportation Integration

Title

4/1/2020

Date

ACCEPTED BY SAN FRANCISCO FIRE DEPARTMENT (SFFD):



Signature

Kamal Andrawes

Print Name


Fire protection Engineer

Title

3/31/2020

Date

APPROVED

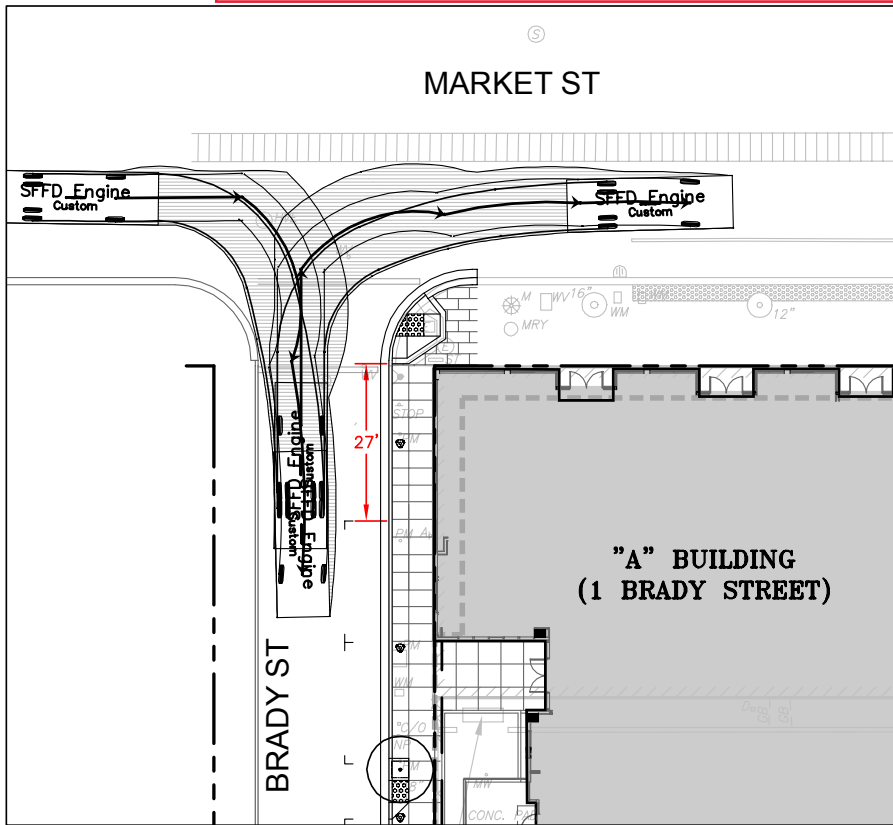


Assistant Fire Marshal
Chief Michael Patt

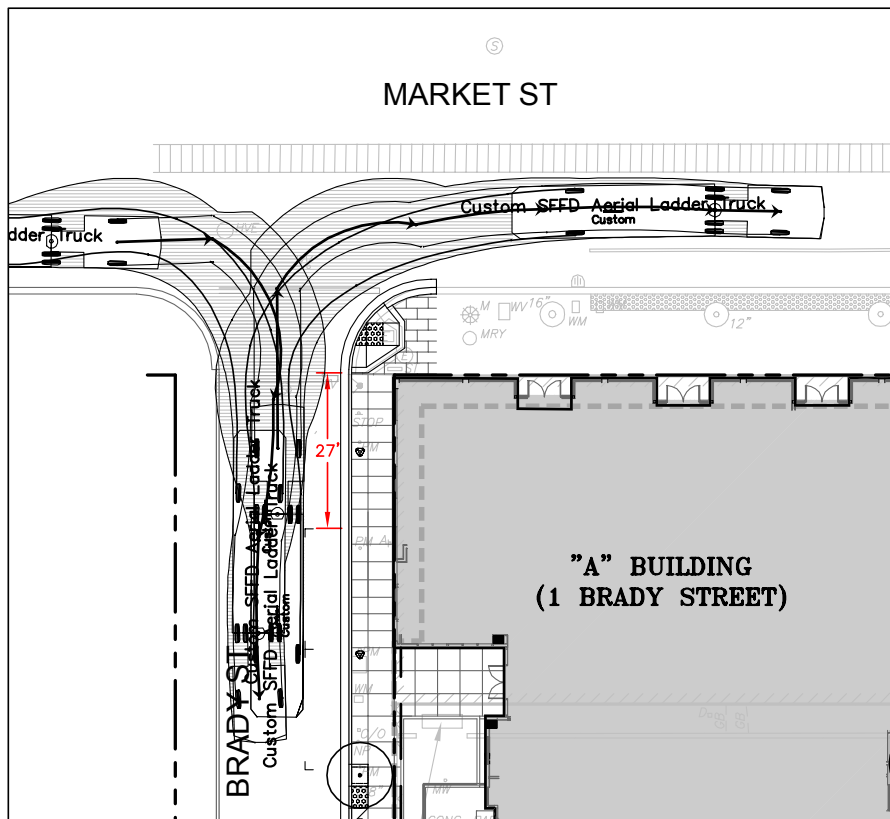
3/31/2020

Date

Turn Template- Market/Brady

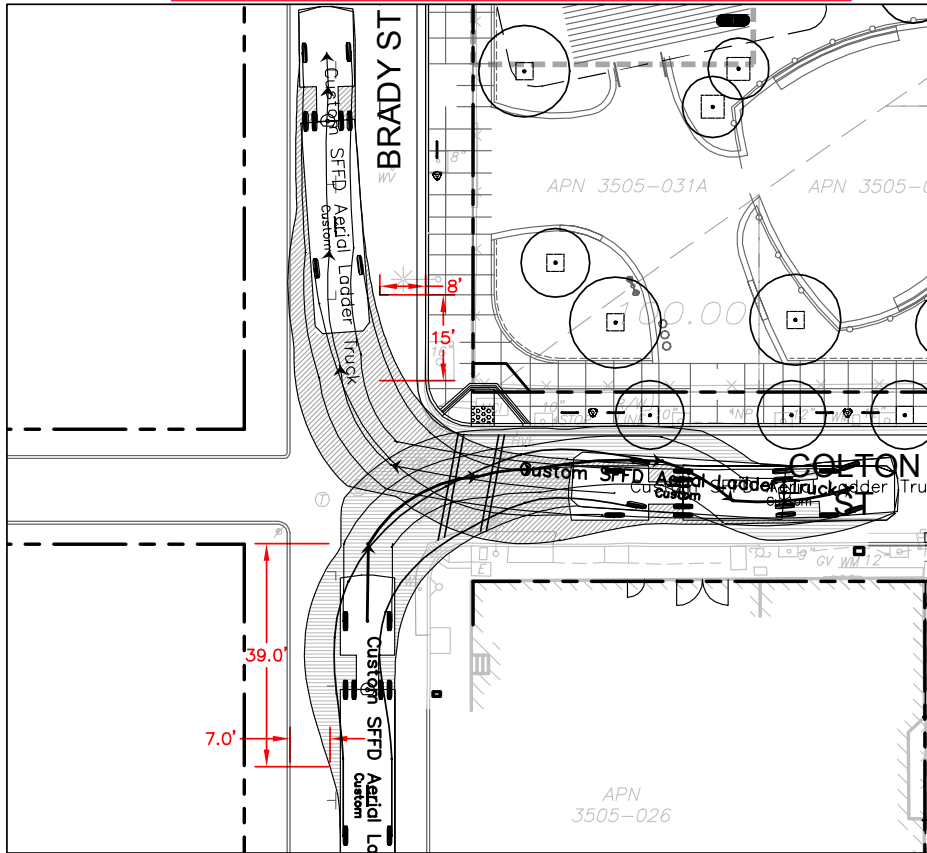


BRADY AND MARKET (EB)
SFFD ENGINE

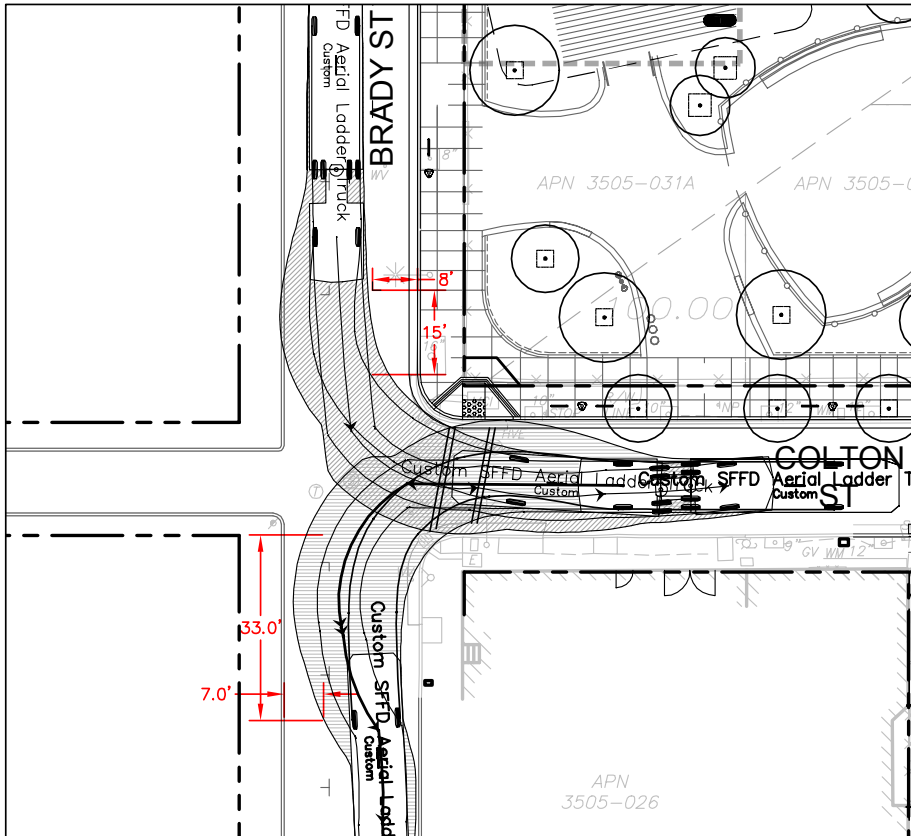


BRADY AND MARKET (EB)
SFFD LADDER TRUCK

Turn Template- Brady/Colton



**BRADY (NB) AND COLTON
SFFD LADDER TRUCK**



**BRADY (SB) AND COLTON
SFFD LADDER TRUCK**

Fire Review

Yee, Larry

From: Hennessy, Cathal (DPW)
Sent: Thursday, June 10, 2021 4:19 PM
To: Yee, Larry
Subject: FW: Curb Color Review (Part II) for 1629 Market St./Plumbers Union

From: Law, Chad (FIR) <chad.law@sfgov.org>
Sent: Thursday, June 10, 2021 11:07 AM
To: Clarke Miller <CMiller@stradasf.com>; Lairet, Karina (DPW) <karina.lairet@sfdpw.org>; Kniha, Paul (MTA) <Paul.Kniha@sfmta.com>
Cc: dpetersen <dpetersen@bkf.com>; Lih-Chuin Loh <LLoh@stradasf.com>; Hennessy, Cathal (DPW) <cathal.hennessy@sfdpw.org>; cunemori <cunemori@bkf.com>; Wong, Phillip (ECN) <phillip.c.wong@sfgov.org>; Sydney Moe <smoe@stradasf.com>; Nick Elsner (nick.elsner@arscode.com) <nick.elsner@arscode.com>; Walton, Kim (MTA) <Kim.Walton@sfmta.com>
Subject: RE: Curb Color Review (Part II) for 1629 Market St./Plumbers Union

No additional SFFD comments.

Good day,

Chad

Captain Chad Law

San Francisco Fire Department
Bureau of Fire Prevention & Investigation
698 Second Street, Room 109
San Francisco, CA 94107
415-558-3300 (Main)
415-554-8988 (Direct)
415-554- 8996 (Fax)

415-238-5319 (Cell)

chad.law@sfgov.org



CONFIDENTIALITY NOTICE: This communication and its contents may contain confidential and/or legally privileged information. It is solely for the use of the intended recipient(s). Unauthorized interception, review, use or disclosure is prohibited and may violate applicable laws, including the Electronic Communications Privacy Act. If you are not the intended recipient, please contact the sender and destroy all copies of the communication.

From: Clarke Miller <CMiller@stradasf.com>
Sent: Monday, June 7, 2021 10:33 AM
To: Lairet, Karina (DPW) <karina.lairet@sfdpw.org>; Law, Chad (FIR) <chad.law@sfgov.org>; Kniha, Paul (MTA) <Paul.Kniha@sfmta.com>
Cc: dpetersen <dpetersen@bkf.com>; Lih-Chuin Loh <LLoh@stradasf.com>; Hennessy, Cathal (DPW) <cathal.hennessy@sfdpw.org>; cunemori <cunemori@bkf.com>; Wong, Phillip (ECN) <phillip.c.wong@sfgov.org>; Sydney Moe <smoe@stradasf.com>; Nick Elsner (nick.elsner@arscode.com) <nick.elsner@arscode.com>; Walton, Kim (MTA) <Kim.Walton@sfmta.com>
Subject: RE: Curb Color Review (Part II) for 1629 Market St./Plumbers Union

This message is from outside the City email system. Do not open links or attachments from untrusted sources.

Paul, Karina, Chad,

I'm following up on our Curb Color submittal for the 1629 Market St./Plumbers Union Project which incorporates the comments we received from you on our May 6th call. Please confirm there are no remaining comments. Additionally, we'd like to begin the process of scheduling the public hearing if you could please outline the next steps.

Thanks,
Clarke

Clarke Miller
Strada Investment Group
Office/Mobile: 415.572.7640
Email: cmiller@stradasf.com

From: Douglas Petersen <dpetersen@bkf.com>
Sent: Tuesday, May 25, 2021 9:17 AM
To: Clarke Miller <CMiller@stradasf.com>; Lih-Chuin Loh <LLoh@stradasf.com>; Hennessy, Cathal (DPW) <cathal.hennessy@sfdpw.org>; Lairet, Karina (DPW) <karina.lairet@sfdpw.org>; Nick Elsner (nick.elsner@arscode.com) <nick.elsner@arscode.com>; Law, Chad (FIR) <chad.law@sfgov.org>; Kniha, Paul <Paul.Kniha@sfmta.com>; Kim Walton <Kim.Walton@sfmta.com>
Cc: cunemori <cunemori@bkf.com>
Subject: RE: Curb Color Review (Part II) for 1629 Market St./Plumbers Union

Hi All,

Please find enclosed an updated exhibit showing proposed curb colors, loading zones, etc., along the 1629 Market Street project frontage. Also enclosed is an updated fire truck turning exhibit for the intersection of Brady and Colton. Please let us know later today or tomorrow if you have any last comments. If there's no comments, we plan on submitting our revised SIP plan sets at the end of the week.

Thanks in advance for your review,

DOUG PETERSEN, PE, LEED AP

Project Manager

BKF ENGINEERS Delivering Inspired Infrastructure®

1730 N. First Street, Suite 600, San Jose, CA 95112

d 408.467.9154 m 408.315.4571 dpetersen@bkf.com BKF.com

Fire Review on relocating parking
to the east side of Brady St

Yee, Larry

From: Law, Chad (FIR) <chad.law@sfgov.org>
Sent: Friday, August 27, 2021 7:23 PM
To: Yee, Larry
Subject: Re: Plumbers Union

Hi Larry,

Apologies as I do remember this conversation that the SFFD has no objections with the proposed flip flopping the parking.

Take care,
Chad

Sent from my iPhone

On Aug 27, 2021, at 3:50 PM, Yee, Larry <Larry.Yee@sfmta.com> wrote:

Hi Chad,

To clarify, this item was discussed with you back in April/May when you were reviewing the project. Just wanted to get confirmation based on that discussion.

Sorry, it's over 4 months ago but hoping you can remember this.

Thanks!
Larry

From: Law, Chad (FIR) <chad.law@sfgov.org>
Sent: Friday, August 27, 2021 3:06 PM
To: Yee, Larry <Larry.Yee@sfmta.com>
Cc: Wong, Norman <Norman.Wong@sfmta.com>; Kniha, Paul <Paul.Kniha@sfmta.com>; Hennessy, Cathal (DPW) <cathal.hennessy@sfdpw.org>; Londono, Edward (FIR) <edward.londono@sfgov.org>
Subject: RE: Plumbers Union

Hi Larry,

My role in the SFFD has changed but Captain Ed Londono, whom you cc'd, will handle any TASC items or street modifications moving forward.

Thank you!

Chad

Chief Chad Law