

## SFMTA - TASC SUMMARY SHEET

<b>PreStaff_Date:</b> 9/3/2019 <b>Requested_by:</b> SFMTA <b>Handled:</b> J. Chimento, Jonathan.Chime <b>Section Head :</b> M.Sallaberry	<input type="checkbox"/> <b>Public Hearing Consent</b> <input type="checkbox"/> <b>Public Hearing Regular</b> <input type="checkbox"/> <b>Informational / Other</b> <small>PH - Regular</small>	<b>No objections:</b> _____ <b>Item Held:</b> _____ <b>Other:</b> _____
---	--	---

**Location:** Alemany Boulevard from Stoneybrook Ave/Cambridge Ave to Crescent Ave/Putna

**Subject:** Class IV Protected Two-Way Bikeway

**PROPOSAL / REQUEST:**

ESTABLISH - CLASS IV BIKEWAY (TWO-WAY PROTECTED)  
 Alemany Boulevard from Stoneybrook Ave/Cambridge Ave to Crescent Ave/Putnam Ave

Installed a concrete barrier to protected the existing bikeway on Alemany Boulevard between Stoneybrook and Crescent and convert the bikeway to two-way.  
 (Supervisor District 11 and 9)  
 Jonathan Chimento, jonathan.chimento@sfmta.com

**BACKGROUND INFORMATION / COMMENTS**

On June 4th, 2019, the SFMTA Board of Directors passed a resolution that enables the Agency to deliver quick-build projects in a more efficient and expedited manner by streamlining project delivery. The policy change was in response to Mayor Breed’s and the SFMTA Board of Directors’ requests for sooner safety improvements on San Francisco streets. The SFMTA Board resolution modified the Transportation Code and thus far, has identified 15 street projects for delivering quick-build projects over the next 24-month period.

Alemany Boulevard from Stoneybrook Ave/Cambridge Ave to Crescent Ave/Putnam Ave has an existing bikeway going eastbound with delineators in a painted buffer.

This project would install concrete K-Rail barrier in the existing painted buffer on Alemany Boulevard from Stoneybrook Ave/Cambridge Ave to Crescent Ave/Putnam Ave.

The bikeway would also be converted to two-way from one-way.

The center median on Alemany approaching Crescent Avenue would be demolished and re-aligned to accommodate the new protected two-way bikeway and the existing two through lanes and one left turn pocket.

On the high injury network, no bicycle collisions, no pedestrian collisions, left turn collision pattern at Putnam that has been address by a signal project.

14X partial overlap with project limits, project should not affect 14X operations.

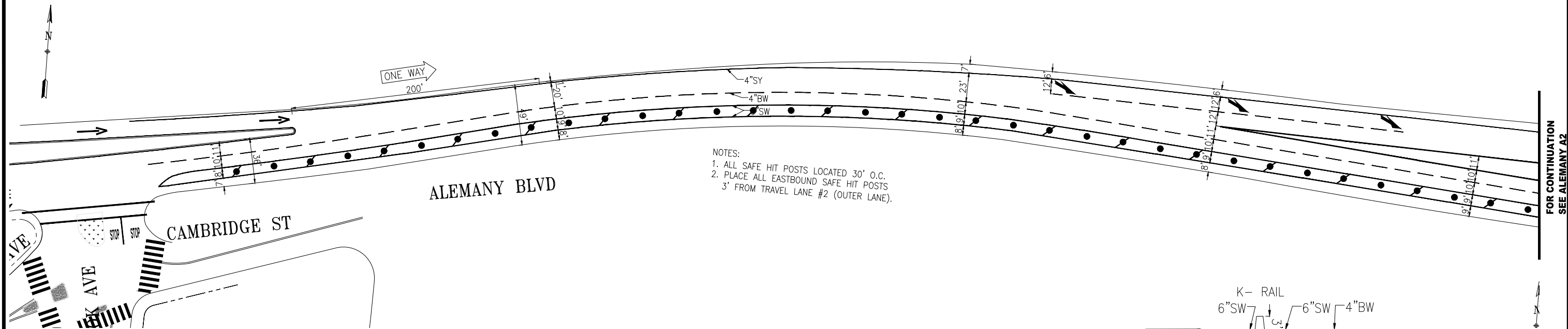
**HEARING NOTIFICATION AND PROCESSING NOTES:**

**ENVIRONMENTAL CLEARANCE BY:**

SFMTA  Attached  Pending

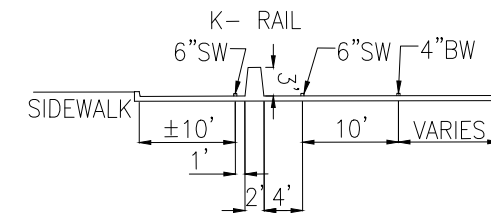
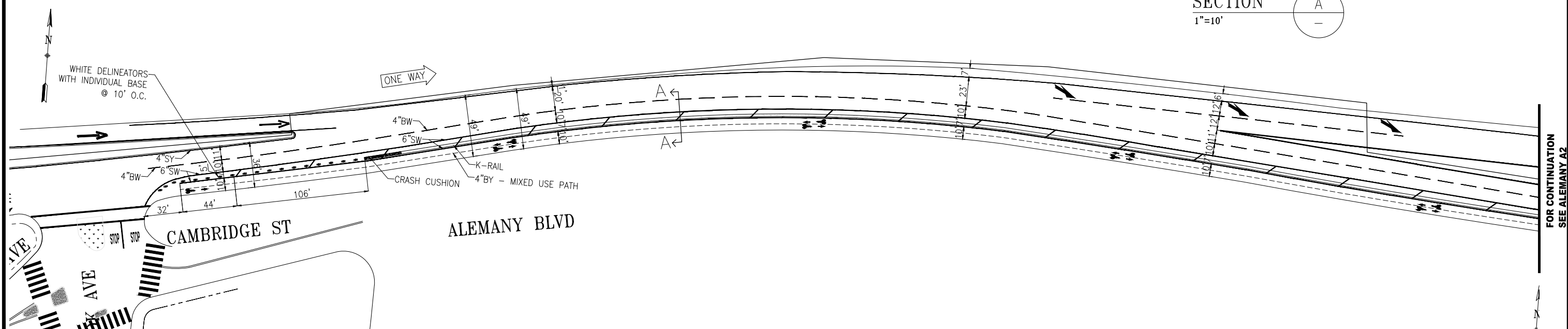
**CHECK IF PREPARING SEPARATE SFMTA BOARD CALENDAR ITEM FOR PROPOSAL:**

PLAN - EXISTING



- NOTES:
1. ALL SAFE HIT POSTS LOCATED 30' O.C.
  2. PLACE ALL EASTBOUND SAFE HIT POSTS 3' FROM TRAVEL LANE #2 (OUTER LANE).

PLAN - PROPOSED



TYPICAL SECTION

SECTION A

1"=10'

FOR CONTINUATION SEE ALEMANY A2

FOR CONTINUATION SEE ALEMANY A2

NO.	DATE	DESCRIPTION	BY	APP
TABLE OF REVISIONS				
CHECK WITH TRACING TO SEE IF YOU HAVE LATEST REVISION				



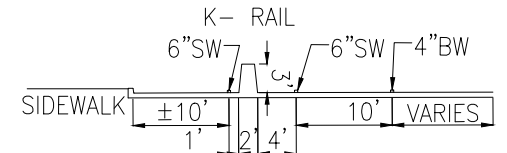
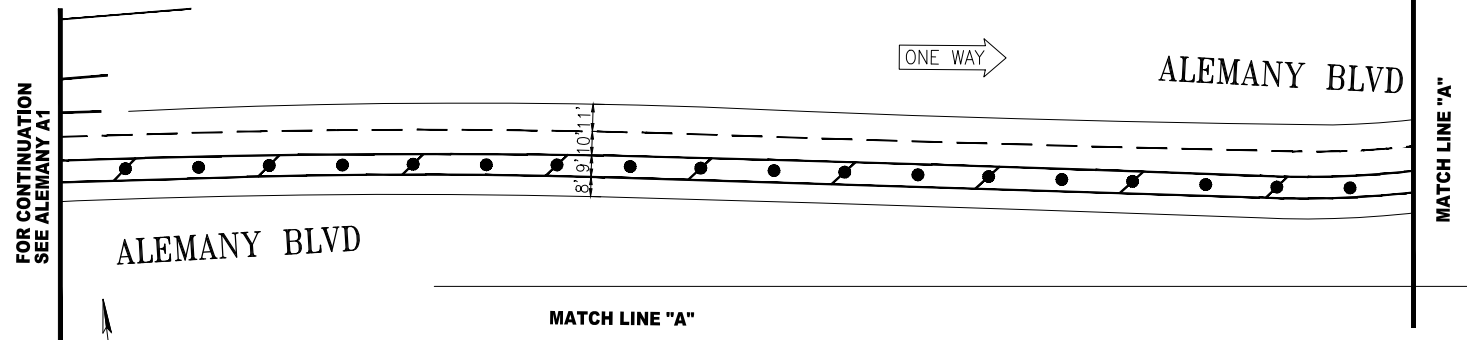
DRAWN:		DATE:		APPROVED		SCALE:	
CHECKED:		DATE:		SENIOR ENGINEER		1" = 40'	
				CITY TRAFFIC ENGINEER		SHEET/SHEETS:	

ALEMANY BOULEVARD  
TRUMBELL AVE TO PUTNAM ST  
DRAFT CLASS IV TWO-WAY CYCLE TRACK

CONTRACT NO.
DRAWING NO. A1
FILE NO.
REV. NO.

FILE NAME: ---  
DATE: ---

PLAN - EXISTING



TYPICAL SECTION



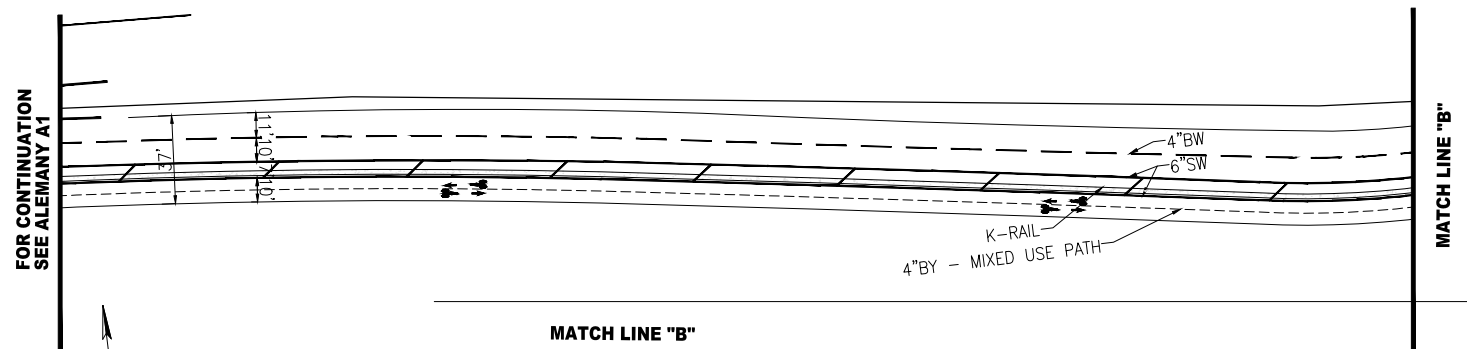
ALEMANY BLVD

MATCH LINE "A"

MATCH LINE "A"

FOR CONTINUATION  
SEE ALEMANY A3

PLAN - PROPOSED



FOR CONTINUATION  
SEE ALEMANY A1

MATCH LINE "B"

MATCH LINE "B"

FOR CONTINUATION  
SEE ALEMANY A3

NO.	DATE	DESCRIPTION	BY	APP
TABLE OF REVISIONS				
CHECK WITH TRACING TO SEE IF YOU HAVE LATEST REVISION				



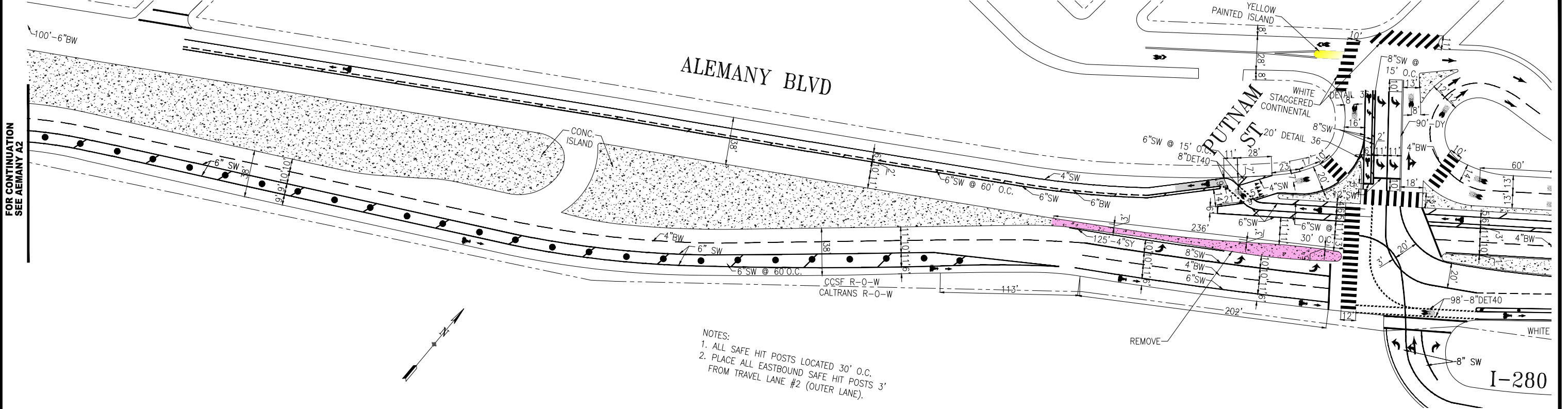
DRAWN:		DATE:		APPROVED		SCALE:	
CHECKED:		DATE:		SENIOR ENGINEER		1" = 40'	
				CITY TRAFFIC ENGINEER		SHEET/SHEETS:	

ALEMANY BOULEVARD  
TRUMBELL AVE TO PUTNAM ST  
DRAFT CLASS IV TWO-WAY CYCLE TRACK

CONTRACT NO.
DRAWING NO. A2
FILE NO.
REV. NO.

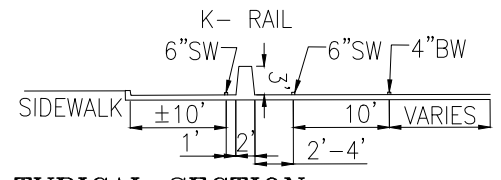
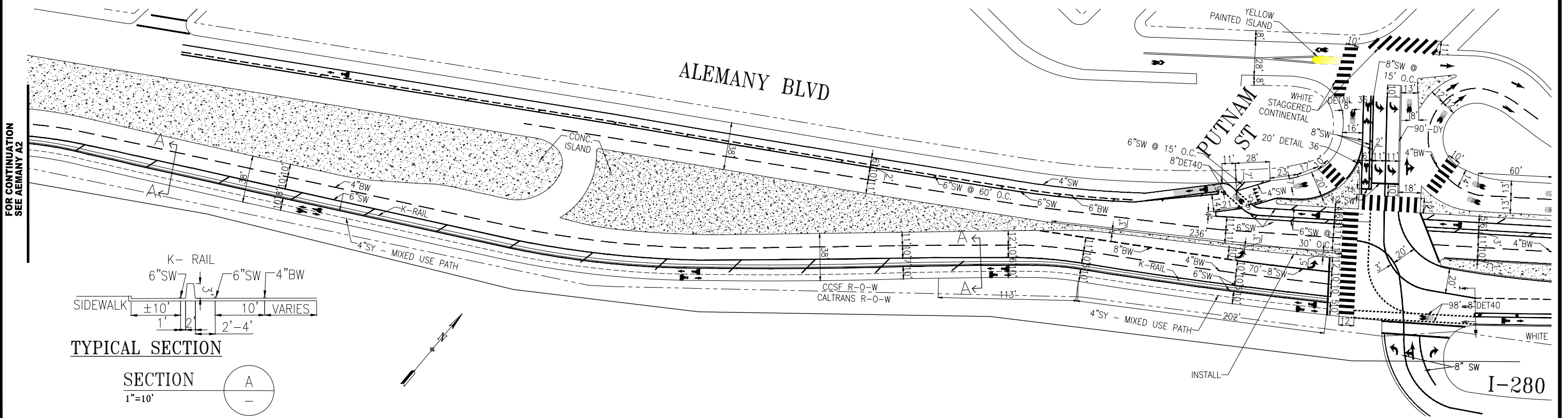
FILE NAME:  
DATE: --/--/---

PLAN - EXISTING



- NOTES:  
 1. ALL SAFE HIT POSTS LOCATED 30' O.C.  
 2. PLACE ALL EASTBOUND SAFE HIT POSTS 3' FROM TRAVEL LANE #2 (OUTER LANE).

PLAN - PROPOSED



TYPICAL SECTION



NO.	DATE	DESCRIPTION	BY	APP
TABLE OF REVISIONS				
CHECK WITH TRACING TO SEE IF YOU HAVE LATEST REVISION				

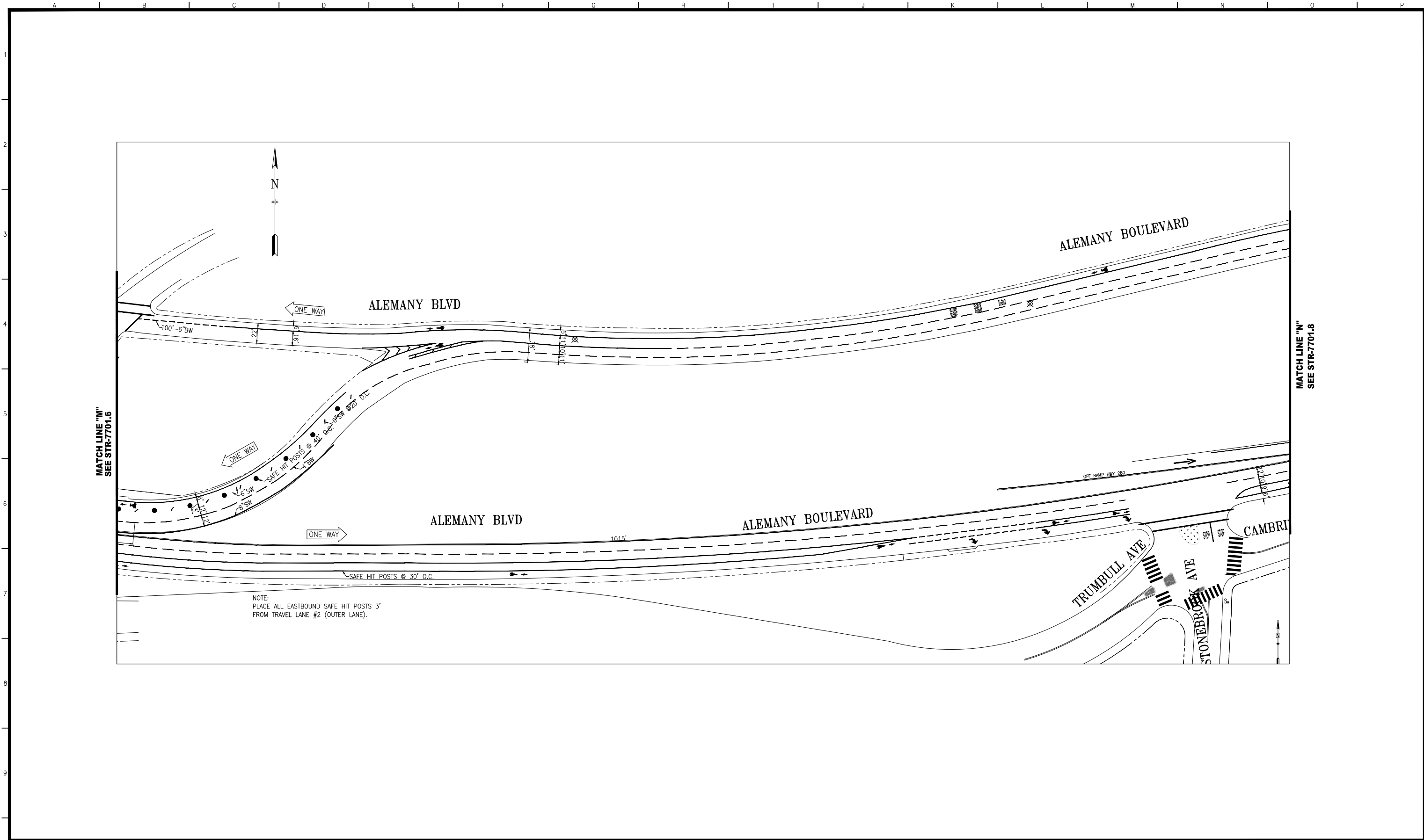


APPROVED	SCALE:
SENIOR ENGINEER	1" = 40'
CITY TRAFFIC ENGINEER	SHEET/SHEETS:

**ALEMANY BOULEVARD**  
**TRUMBELL AVE TO PUTNAM ST**  
**DRAFT CLASS IV TWO-WAY CYCLE TRACK**

CONTRACT NO.
DRAWING NO. A3
FILE NO.
REV. NO.

FILE NAME: DATE: --/--/---



NO.	DATE	DESCRIPTION	BY	APP.
1	6/8/11	ADDED BICYCLE LANES FROM JUSTIN DRIVE TO TRUMBULL AVE.	RAC	DC

TABLE OF REVISIONS  
CHECK WITH TRACING TO SEE IF YOU HAVE LATEST REVISION



**SAN FRANCISCO MUNICIPAL TRANSPORTATION AGENCY**  
CITY AND COUNTY OF SAN FRANCISCO

DESIGNED:	DATE:	APPROVED:
DRAWN:	DATE:	SECTION ENGINEER
CHECKED:	DATE:	CITY TRAFFIC ENGINEER
R.O.	2005	

DESIGNED:	DATE:	APPROVED:
DRAWN:	DATE:	SECTION ENGINEER
CHECKED:	DATE:	CITY TRAFFIC ENGINEER
R.O.	2005	

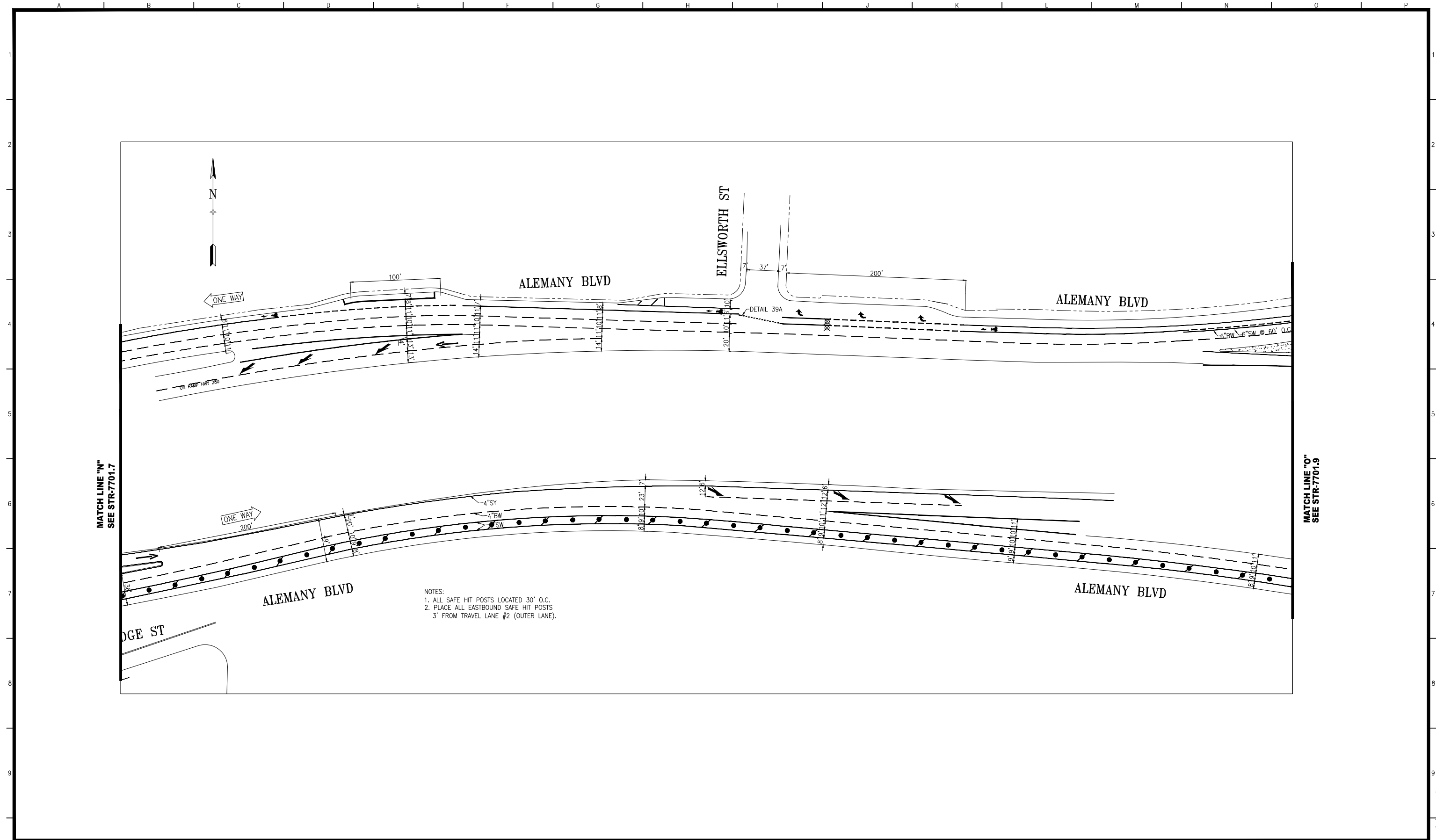
SCALE:
1"=50'
SHEET OF SHEETS

TRAFFIC STRIPING
ALEMANY BOULEVARD JUSTIN DRIVE TO TRUMBULL AVENUE

CONTRACT NO.
DRAWING NO. STR-7701.7
FILE NO.
REV. NO. 1

FILE NAME: T:\e\off\_rec\dwgs\ca\_2\01erog\str-7701.dwg  
ORIGIN: OPERATIONS  
DATE:

EXTERNAL REFERENCES:  
POINTS USED:  
SCALE FACTOR:  
PLOT SCALE:



NO.	DATE	DESCRIPTION	BY	APP.
1	6/8/11	ADDED BICYCLE LANES	RAC	DC

TABLE OF REVISIONS  
CHECK WITH TRACING TO SEE IF YOU HAVE LATEST REVISION



**SAN FRANCISCO MUNICIPAL TRANSPORTATION AGENCY**  
CITY AND COUNTY OF SAN FRANCISCO

DESIGNED:	DATE:
DRAWN:	DATE:
CHECKED:	DATE:

APPROVED	
<u>THOMAS P. FOLKS</u> 2005	DATE:
SECTION ENGINEER	
<u>BOND M. YEE</u> 2005	DATE:
CITY TRAFFIC ENGINEER	

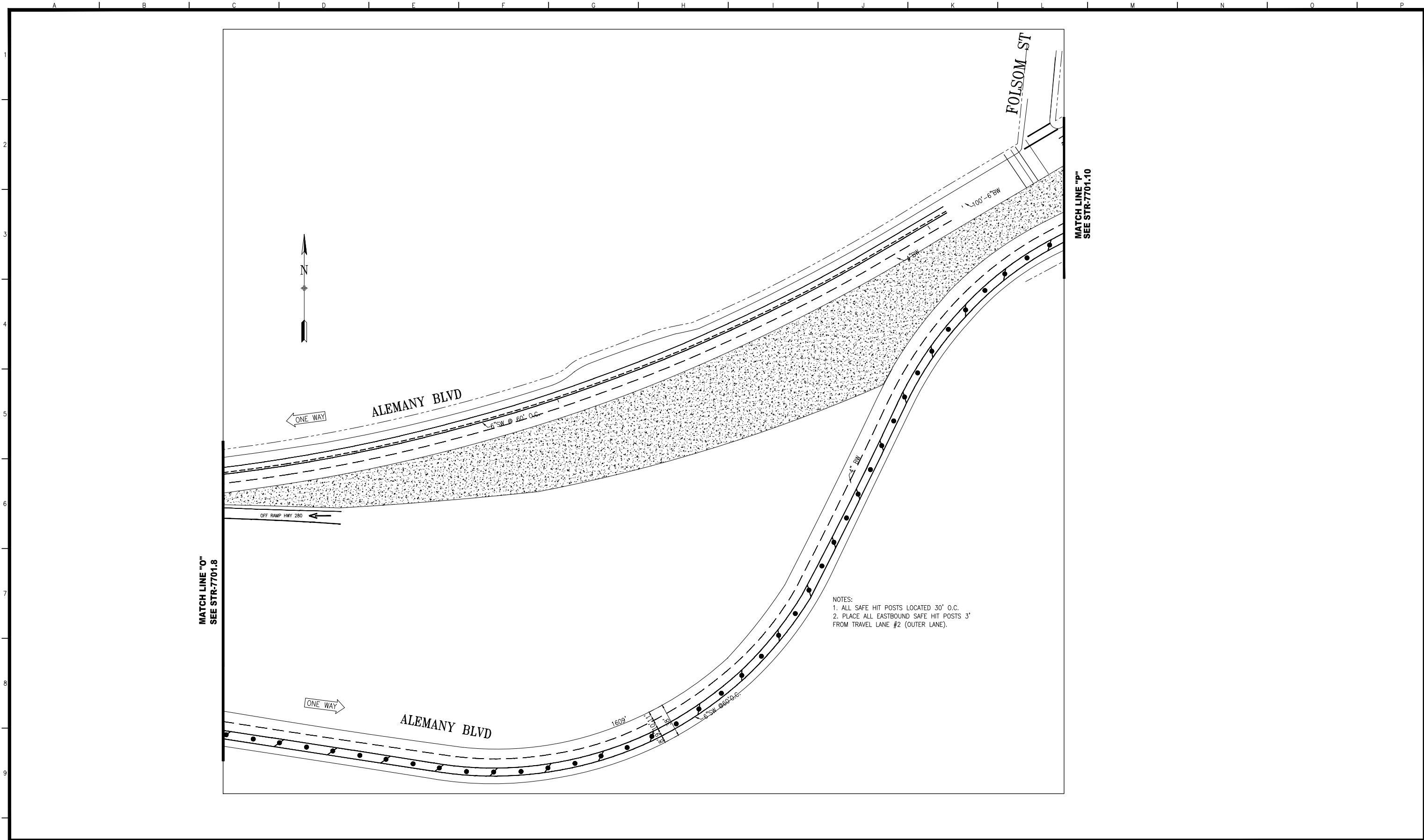
SCALE:
1"=50'
SHEET OF SHEETS

TRAFFIC STRIPING  
ALEMANY BOULEVARD  
JUSTIN DRIVE TO TRUMBLE AVENUE

CONTRACT NO.
DRAWING NO. STR-7701.8
FILE NO.
REV. NO. 1

FILE NAME: T:\e\off\_rec\wags\0-2\0\alemany\str-7701\ORIGIN: OPERATIONS  
DATE:

EXTERNAL REFERENCES:  
FONTS USED:  
SCALE FACTOR:  
PLOT SCALE:



**SAN FRANCISCO MUNICIPAL TRANSPORTATION AGENCY**  
CITY AND COUNTY OF SAN FRANCISCO

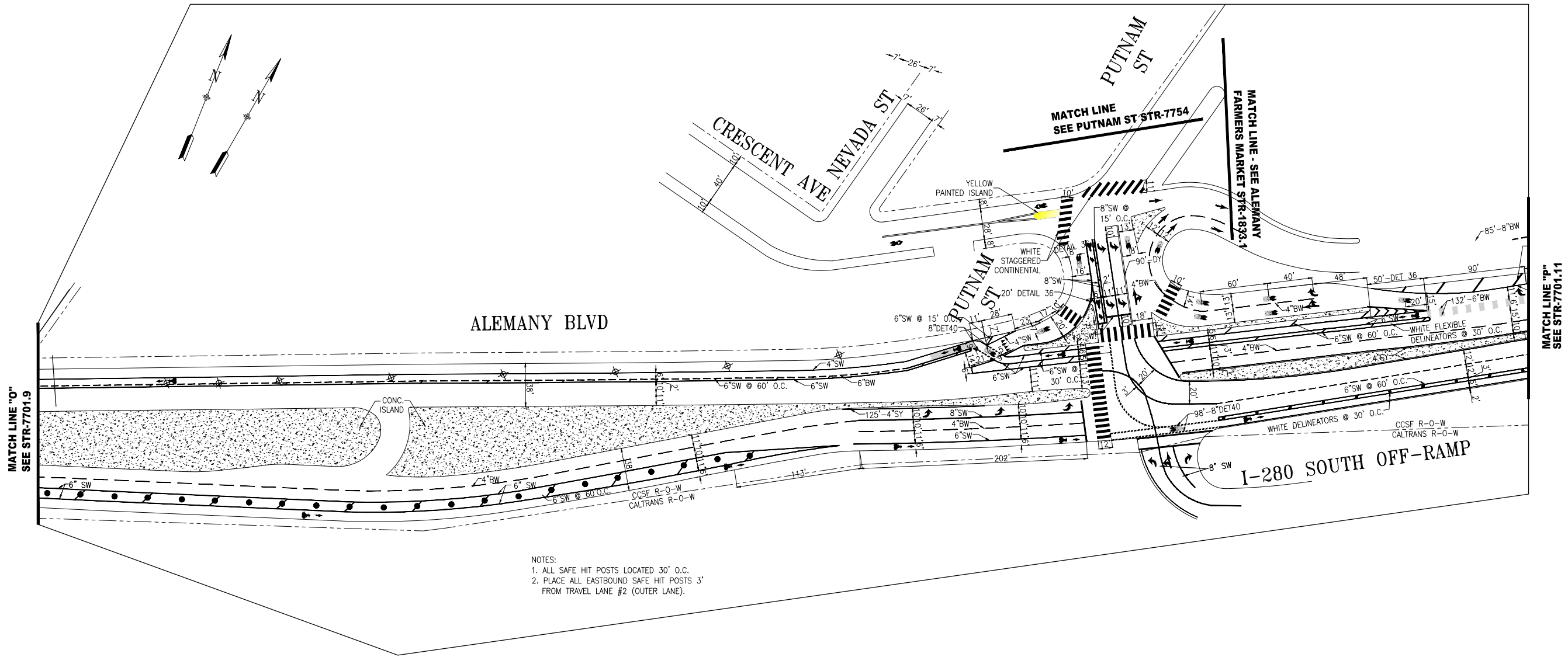
DESIGNED: DATE:	APPROVED:
DRAWN: DATE:	SECTION ENGINEER DATE:
CHECKED: DATE:	CITY TRAFFIC ENGINEER DATE:
T.A 2005	THOMAS P. FOLKS 2005
R.O 2005	BOND M. YEE 2005

SCALE:
1"=50'
SHEET OF SHEETS

TRAFFIC STRIPING
ALEMANY BOULEVARD ELLSWORTH STREET TO FOLSOM STREET

CONTRACT NO.
DRAWING NO. STR-7701.9
FILE NO.
REV. NO. 1

EXTERNAL REFERENCES:  
FONTS USED:  
SCALE FACTOR:  
PLOT SCALE:  
FILE NAME:  
DATE:



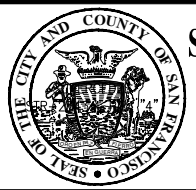
NOTES:  
 1. ALL SAFE HIT POSTS LOCATED 30' O.C.  
 2. PLACE ALL EASTBOUND SAFE HIT POSTS 3' FROM TRAVEL LANE #2 (OUTER LANE).

MATCH LINE "O"  
 SEE STR-7701.9

MATCH LINE  
 SEE PUTNAM ST STR-7754

MATCH LINE - SEE ALEMANY  
 FARMERS MARKET STR-1893.1

MATCH LINE "P"  
 SEE STR-7701.11



**SAN FRANCISCO MUNICIPAL TRANSPORTATION AGENCY**  
 CITY AND COUNTY OF SAN FRANCISCO

NO.	DATE	DESCRIPTION	BY	APP.
1	11/3/12	UPDATED PER FIELD @PUTNAM: CRESCENT DY, SHIFT PAV ARROW & XIMLK. ADD MICHLN	DY	BW
2	6/8/11	ADDED BICYCLE LANES	RAC	DC

TABLE OF REVISIONS  
 CHECK WITH TRACING TO SEE IF YOU HAVE LATEST REVISION

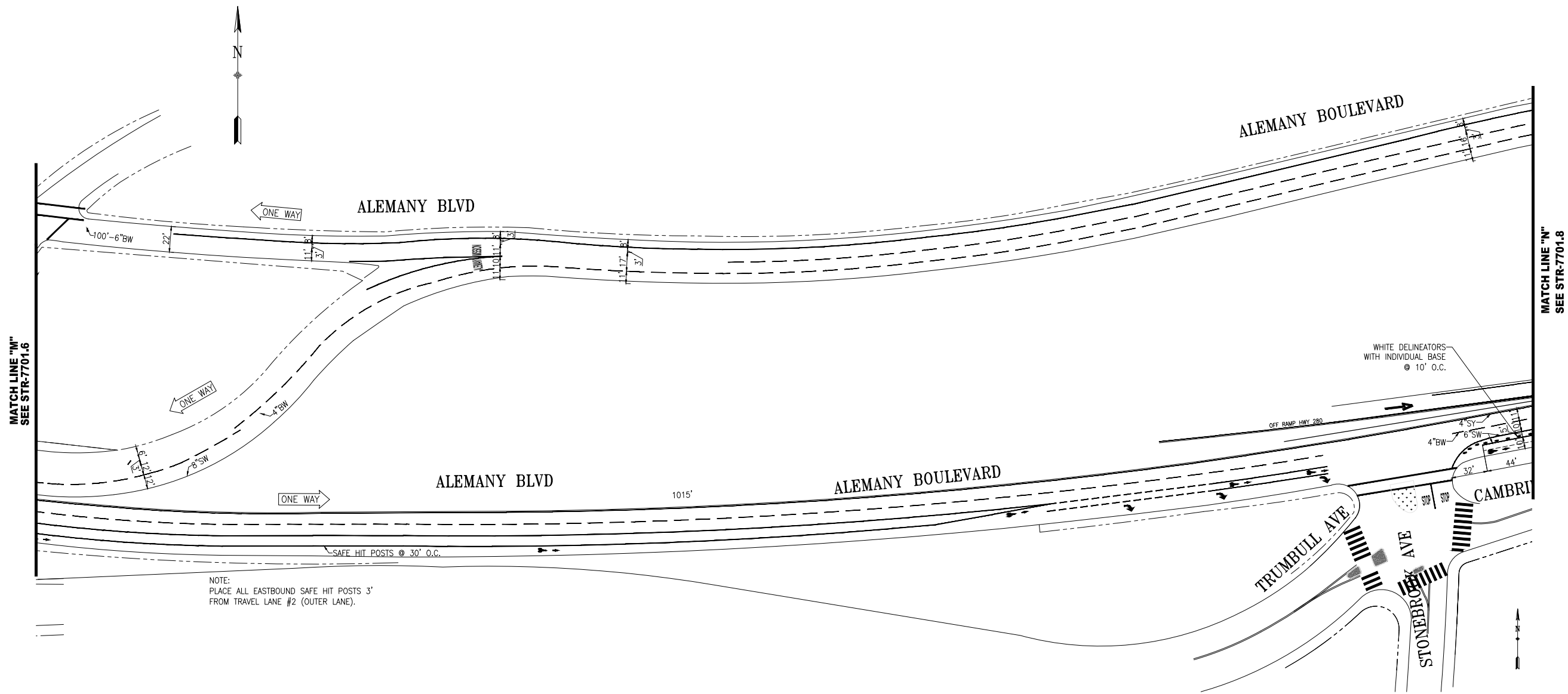
DESIGNED:	DATE:	APPROVED:	SCALE:
T.A.	2005	THOMAS P. FOLKS 2005 SECTION ENGINEER	1"=50'
CHECKED:	DATE:	R.O.	SHEET OF SHEETS
R.O.	2005	BOND M. YEE 2005 CITY TRAFFIC ENGINEER	

CONTRACT NO.	DRAWING NO.
	STR-7701.11
FILE NO.	REV. NO.
	2

TRAFFIC STRIPING  
 ALEMANY BOULEVARD  
 FOLSOM STREET TO I-280 SOUTH OFF-RAMP

EXTERNAL REFERENCES:  
 FONTS USED:  
 SCALE FACTOR:  
 PLOT SCALE:  
 FILE NAME:  
 DATE:





MATCH LINE "M"  
SEE STR-7701.6

MATCH LINE "N"  
SEE STR-7701.8

NO.	DATE	DESCRIPTION	BY	APP
1	7/19	UPGRADE BIKEWAY TO TWO-WAY EAST OF STONEYBROOK, NEW POSTS	J.CHIMENTO	A.UY
2	06/08/11	ADDED BICYCLE LANES FROM JUSTIN DRIVE TO TRUMBULL AVE.	RAC	DC

TABLE OF REVISIONS  
CHECK WITH TRACING TO SEE IF YOU HAVE LATEST REVISION



SUPERCEDES STR-2343.4 REV "4"	
DRAWN: T.A 2005	DATE: 2005
CHECKED: R.O 2005	DATE: 2005

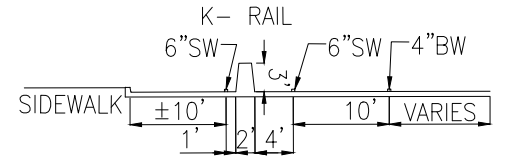
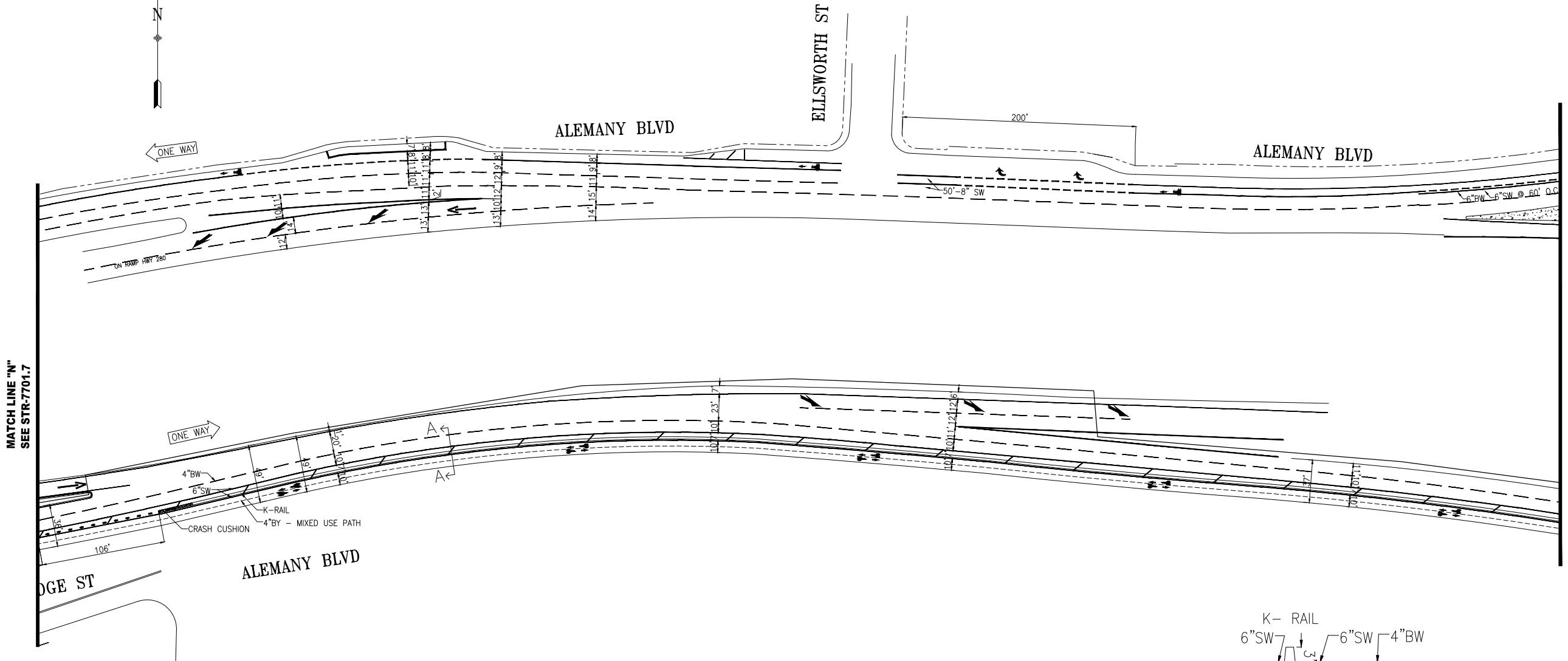
APPROVED	
TOMAS P. FOLKS SENIOR ENGINEER	2005
BOND M. YEE CITY TRAFFIC ENGINEER	2005

SCALE:  
1"=50'  
SHEET/SHEETS:

TRAFFIC STRIPING  
ALEMANY BOULEVARD  
JUSTIN DRIVE TO TRUMBULL AVENUE

CONTRACT NO.	
DRAWING NO.	STR-7701.7
FILE NO.	
REV. NO.	2

EXTERNAL REFERENCES:  
POINTS USED:  
SCALE FACTOR:  
PLOT SCALE:  
FILE NAME:  
DATE:  
T:\e\off\_rec\dwgs\ca\_2\0\0\origen\str-7701.7.dwg



TYPICAL SECTION

SECTION A  
1"=10'

NO.	DATE	DESCRIPTION	BY	APP
1	06/08/11	CHANGE SOUTHERN BIKEWAY TO TWO-WAY, NEW POSTS, ADD K-RAIL	J.CHIMENTO	A.UY
2	06/08/11	ADDED BICYCLE LANES	RAC	DC

TABLE OF REVISIONS  
CHECK WITH TRACING TO SEE IF YOU HAVE LATEST REVISION



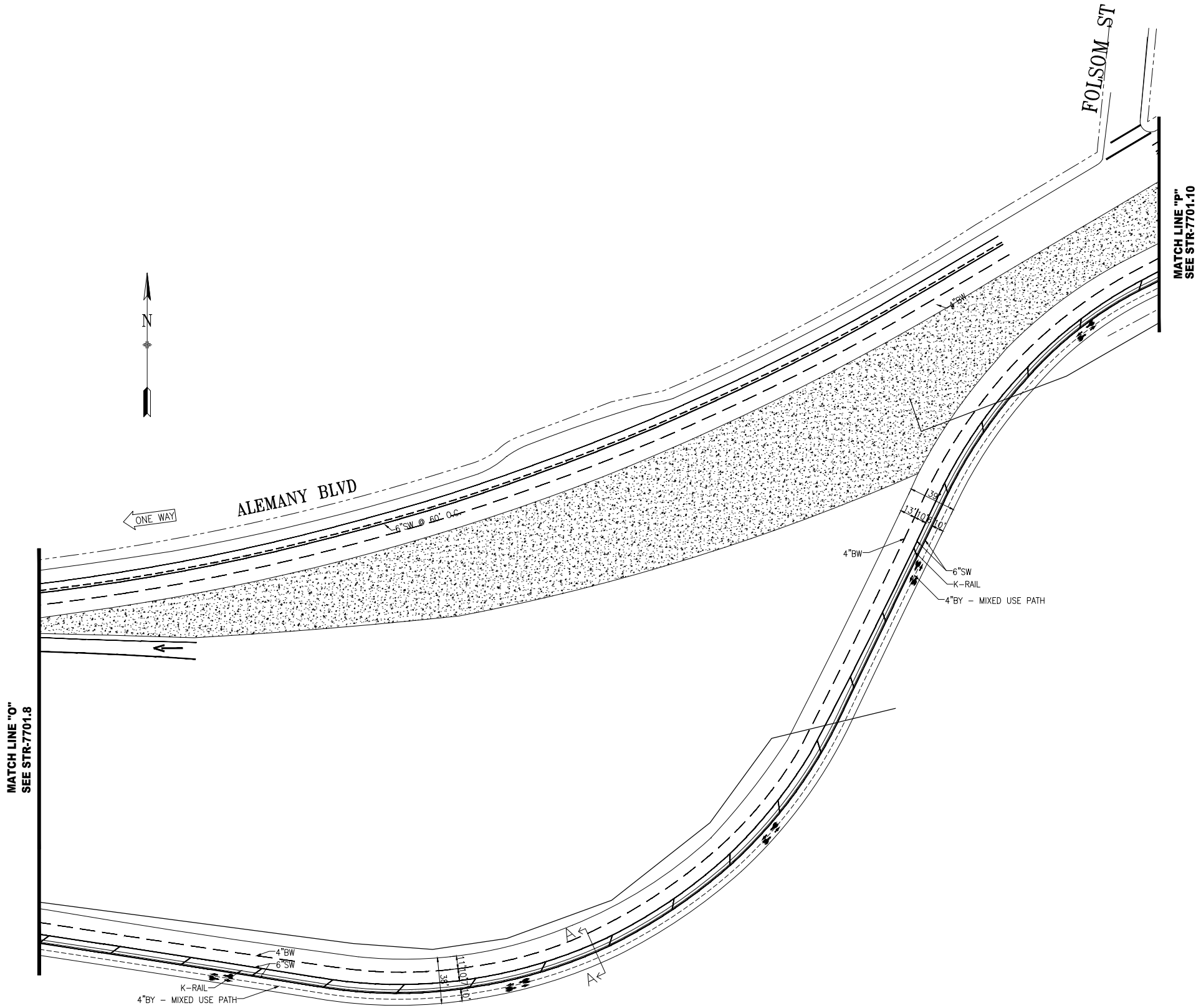
SUPERCEDES STR-2343.4 REV "4"	
DRAWN: T.A 2005	DATE: 2005
CHECKED: R.O 2005	DATE: 2005

APPROVED	
TOMAS P. FOLKS SENIOR ENGINEER	DATE: 2005
BOND M. YEE CITY TRAFFIC ENGINEER	DATE: 2005

SCALE: 1"=50'	TRAFFIC STRIPING
SHEET/SHEETS:	
ALEMANY BOULEVARD JUSTIN DRIVE TO TRUMBLE AVENUE	

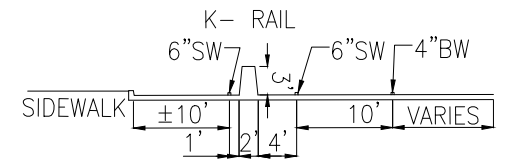
CONTRACT NO.
DRAWING NO. STR-7701.8
FILE NO.
REV. NO. 2

EXTERNAL REFERENCES:  
FONTS USED:  
SCALE FACTOR:  
PLOT SCALE:  
FILE NAME:  
DATE:



MATCH LINE "O"  
SEE STR-7701.8

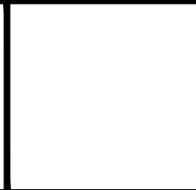
MATCH LINE "P"  
SEE STR-7701.10



**TYPICAL SECTION**  
SECTION A  
1"=10'

NO.	DATE	DESCRIPTION	BY	APP
1	7/19	CHANGE SOUTHERN BIKEWAY TO TWO-WAY, ADD K-RAIL	J.CHIMENTO	A.UY
2	06/08/11	ADDED BICYCLE LANES	RAC	DC

TABLE OF REVISIONS  
CHECK WITH TRACING TO SEE IF YOU HAVE LATEST REVISION



SUPERCEDES STR-2343.4 REV "4"	
DRAWN: T.A 2005	DATE: 2005
CHECKED: R.O 2005	DATE: 2005

APPROVED	
TOMAS P. FOLKS SENIOR ENGINEER	DATE: 2005
BOND M. YEE CITY TRAFFIC ENGINEER	DATE: 2005

SCALE:  
1"=50'  
SHEET/SHEETS:

TRAFFIC STRIPING  
ALEMANY BOULEVARD  
ELLSWORTH STREET TO FOLSOM STREET

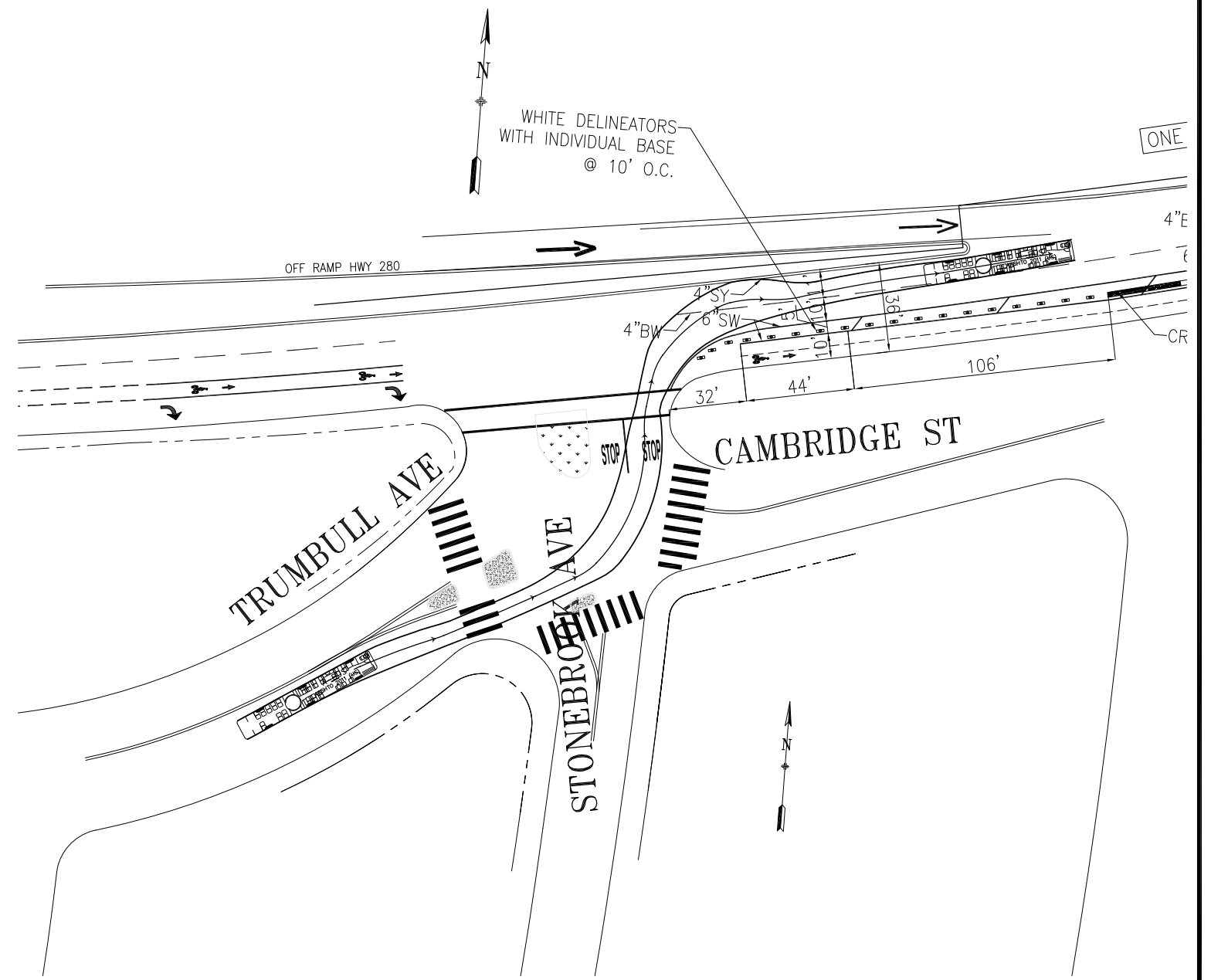
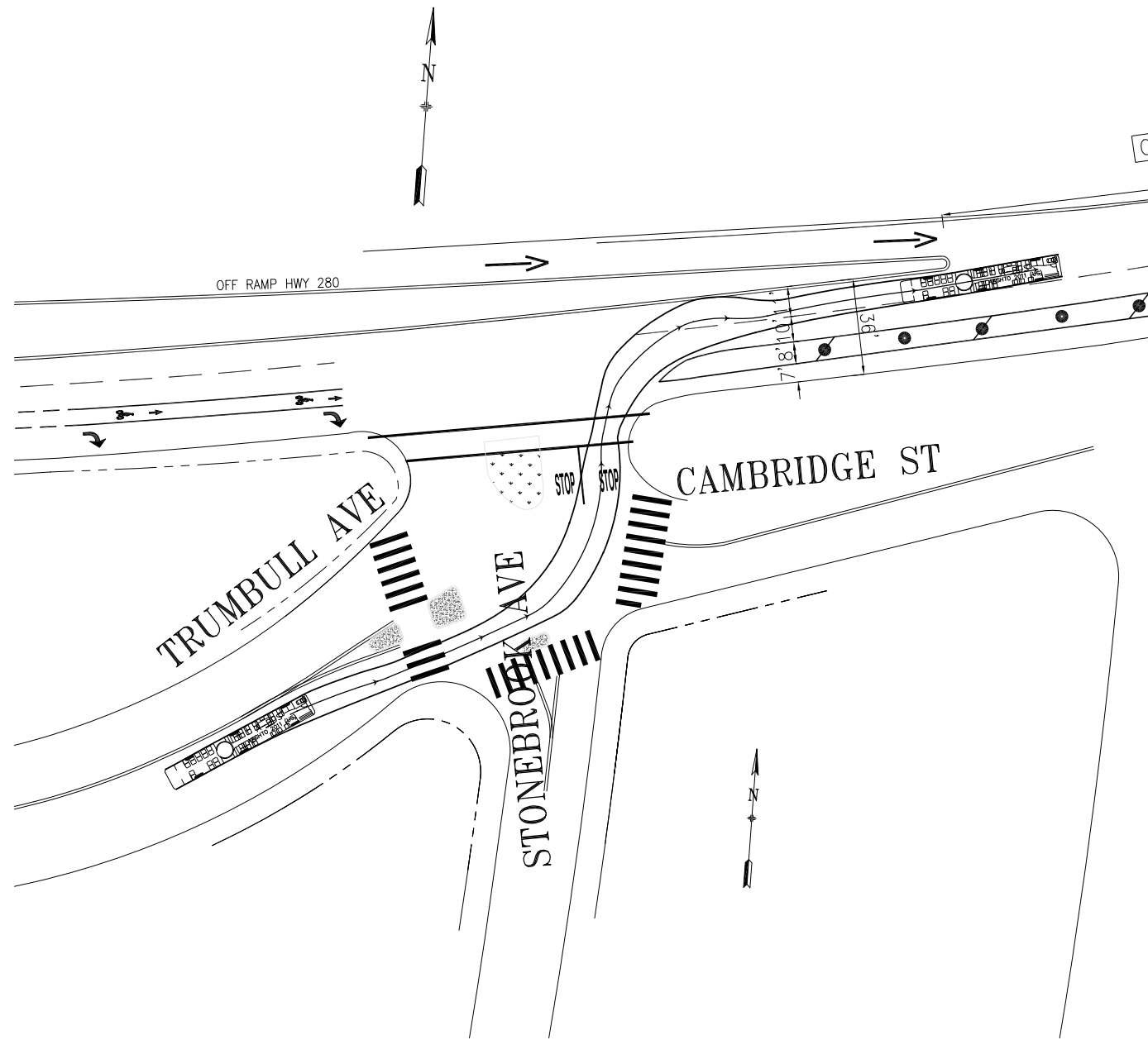
CONTRACT NO.
DRAWING NO. STR-7701.9
FILE NO.
REV. NO. 2

EXTERNAL REFERENCES:  
FONTS USED:  
SCALE FACTOR:  
PLOT SCALE:  
FILE NAME:  
DATE:



PLAN - EXISTING

PLAN - PROPOSED



NO.	DATE	DESCRIPTION	BY	APP
TABLE OF REVISIONS				
CHECK WITH TRACING TO SEE IF YOU HAVE LATEST REVISION				



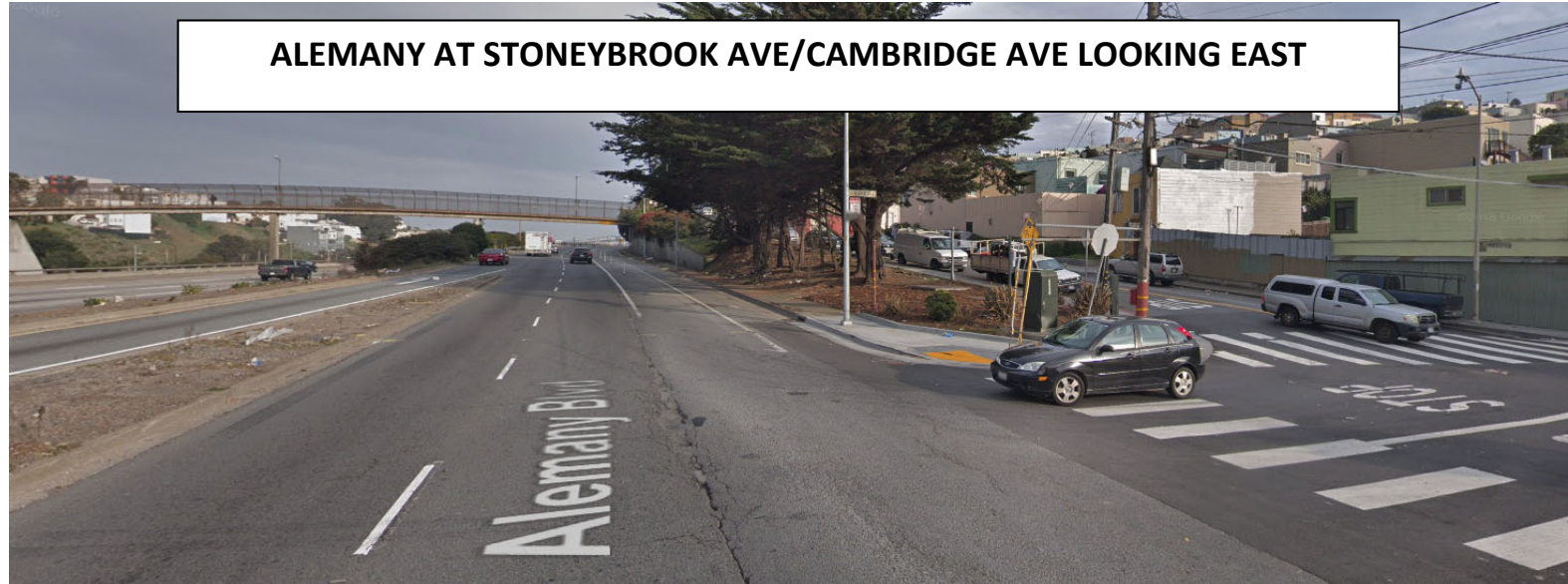
DRAWN:		DATE:		APPROVED		SCALE:	
CHECKED:		DATE:		SENIOR ENGINEER		1" = 30'	
				CITY TRAFFIC ENGINEER		SHEET/SHEETS:	

ALEMANY BOULEVARD AND STONEYBROOK	
BUS 60 TURN TEMPLATE	

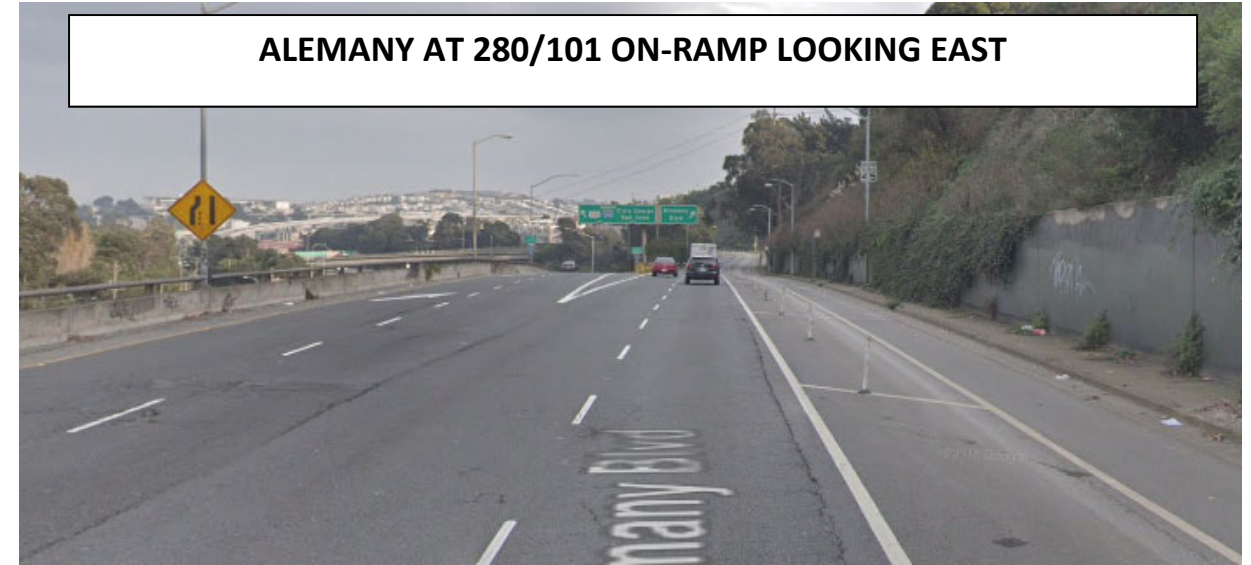
CONTRACT NO.
DRAWING NO.
FILE NO.
REV. NO.

FILE NAME: ---/---/---  
DATE: ---/---/---

**ALEMANY AT STONEYBROOK AVE/CAMBRIDGE AVE LOOKING EAST**



**ALEMANY AT 280/101 ON-RAMP LOOKING EAST**



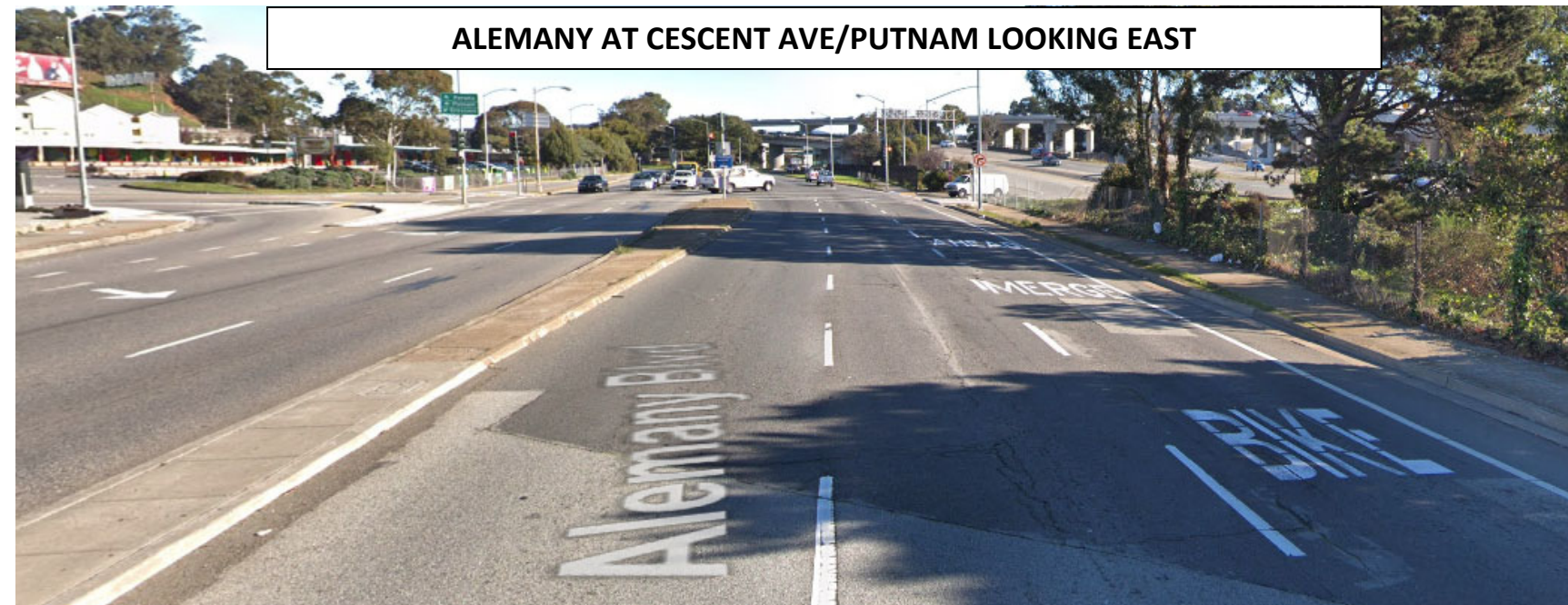
**ALEMANY WEST OF BRIDGE OVER 280/101 LOOKING EAST**



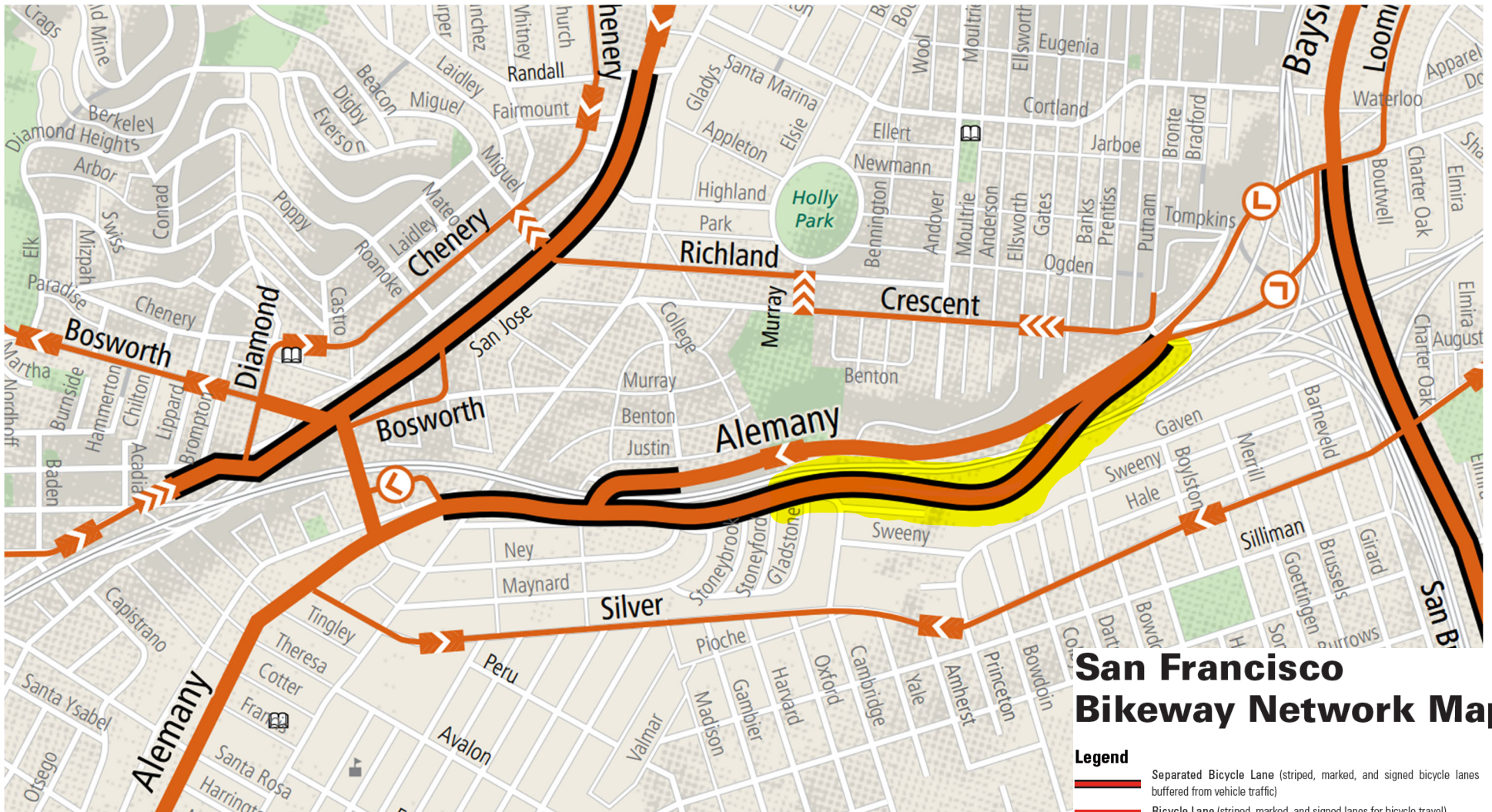
**ALEMANY EAST OF BRIDGE OVER 280/101 LOOKING EAST**



**ALEMANY AT CESCENT AVE/PUTNAM LOOKING EAST**



# Existing Bike Map 2019-05-13: Alemany Boulevard

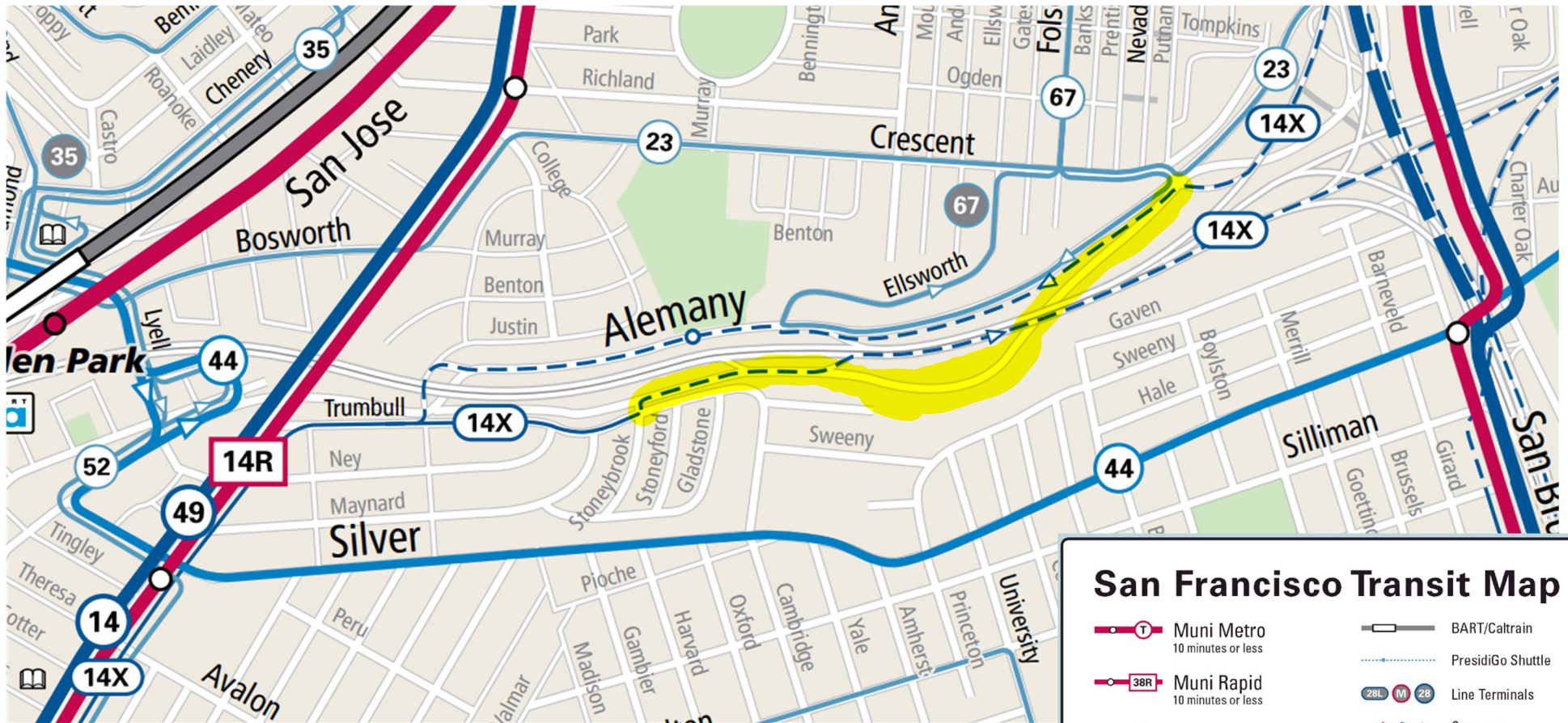


## San Francisco Bikeway Network Map

- Legend**
- Separated Bicycle Lane (striped, marked, and signed bicycle lanes buffered from vehicle traffic)
  - Bicycle Lane (striped, marked, and signed lanes for bicycle travel)
  - Bicycle Route (shared travel lane marked and signed for shared use)
  - Bicycle Path (off-street multi-use path)
  - One-Way Street
  - BART Station
  - Caltrain Station
  - Bay Area Bike Share Station
  - Park or Open Space
  - College or University
  - Major Street
  - Neighborhood Street

- Hills**
- Steep Hill (more than 10% grade)
  - Moderate Hill (5-10% grade) (arrow points uphill)

# Transit Map: 14X Drives through Project Limits



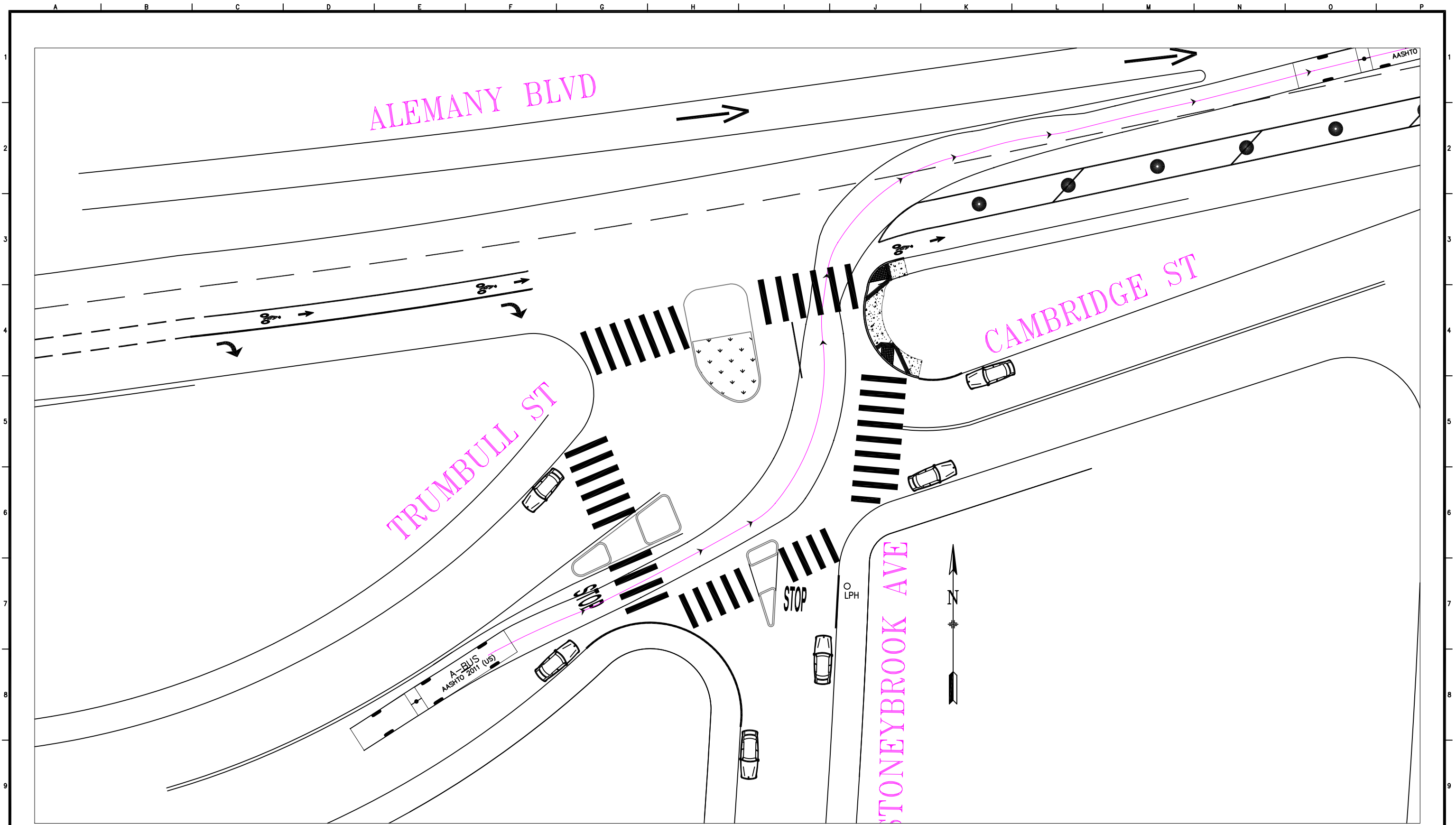
### San Francisco Transit Map

Muni Metro 10 minutes or less	BART/Caltrain
Muni Rapid 10 minutes or less	PresidiGo Shuttle
10 minutes or less	Line Terminals
Every 10-20 minutes	One way
Every 20-30 minutes	Nonstop
Express	Underground
Historic Streetcar	Accessible Metro/Rapid Stops
Cable Car	Non-Accessible Metro/Rapid Stops
	Point of Interest
	Hospital
	Library
	School
	Market St. Elevator

Note: Frequencies listed above are for daytime service only.

0 0.5 mi





NO.	DATE	DESCRIPTION	BY	APP.
TABLE OF REVISIONS				
CHECK WITH TRACING TO SEE IF YOU HAVE LATEST REVISION				



**SAN FRANCISCO MUNICIPAL TRANSPORTATION AGENCY**

CITY AND COUNTY OF SAN FRANCISCO

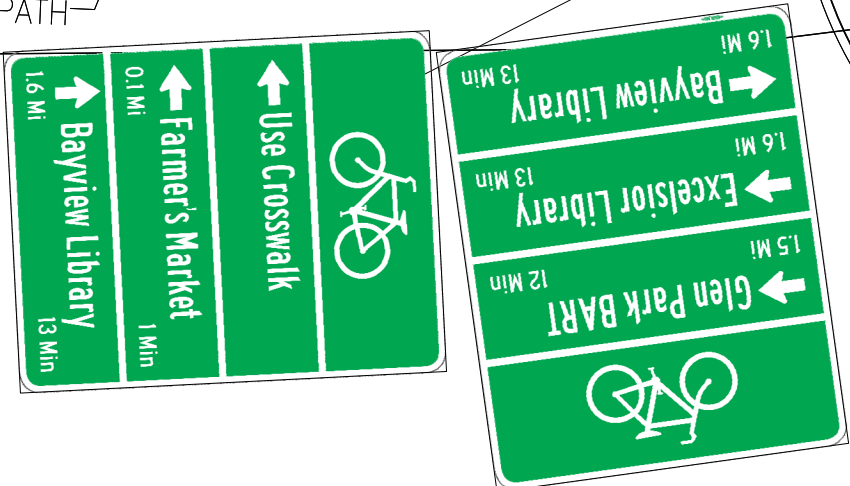
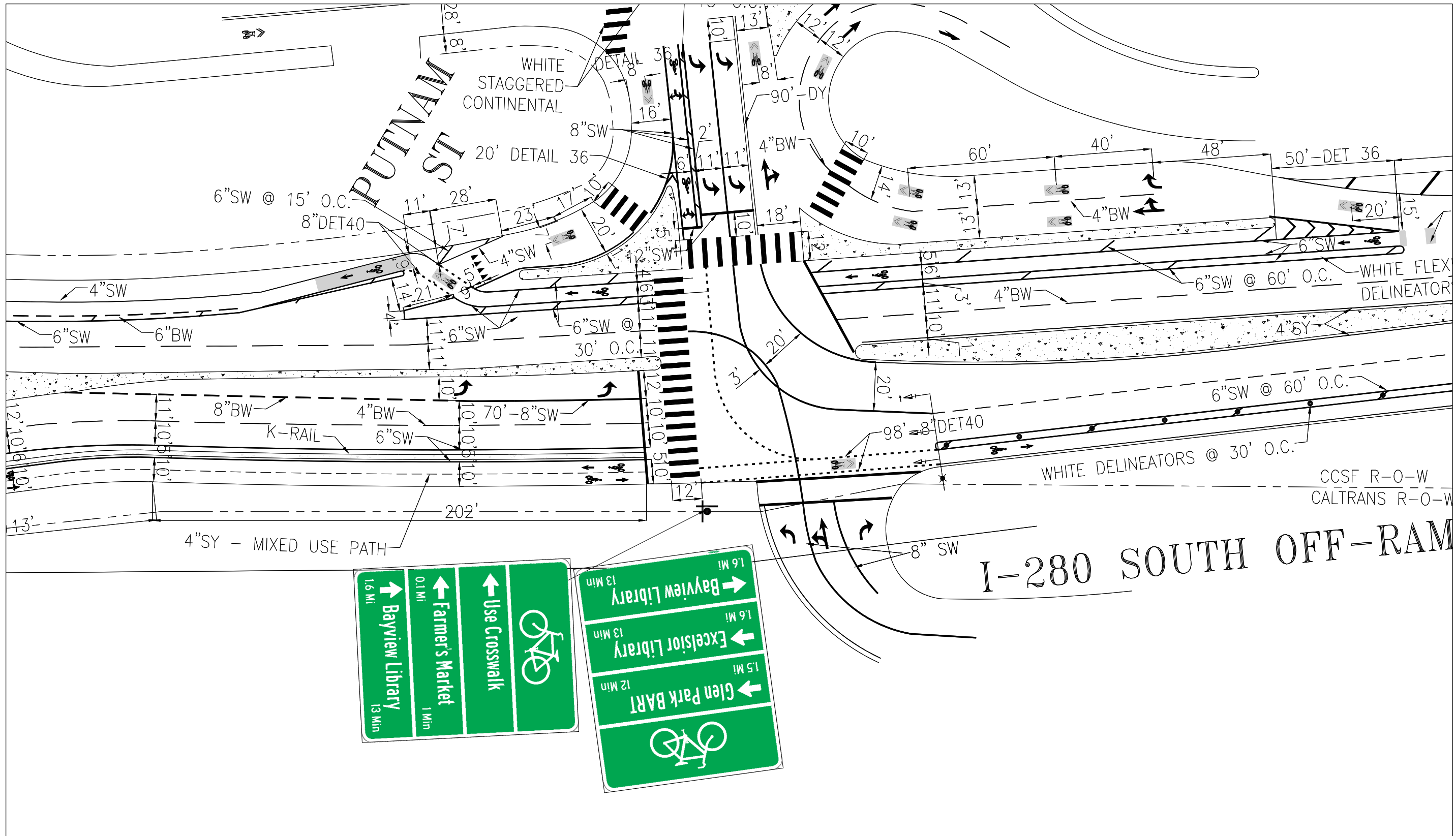
DRAWN:	DATE:
CHECKED:	DATE:

APPROVED	
SENIOR ENGINEER	DATE:
CITY TRAFFIC ENGINEER	DATE:

SCALE:	1:30
SHEET OF SHEETS	

PROPOSED ISLANDS  
TRUMBULL AT STONEYBROOK  
60FT ARTIC BUS  
TURN TEMPLATE

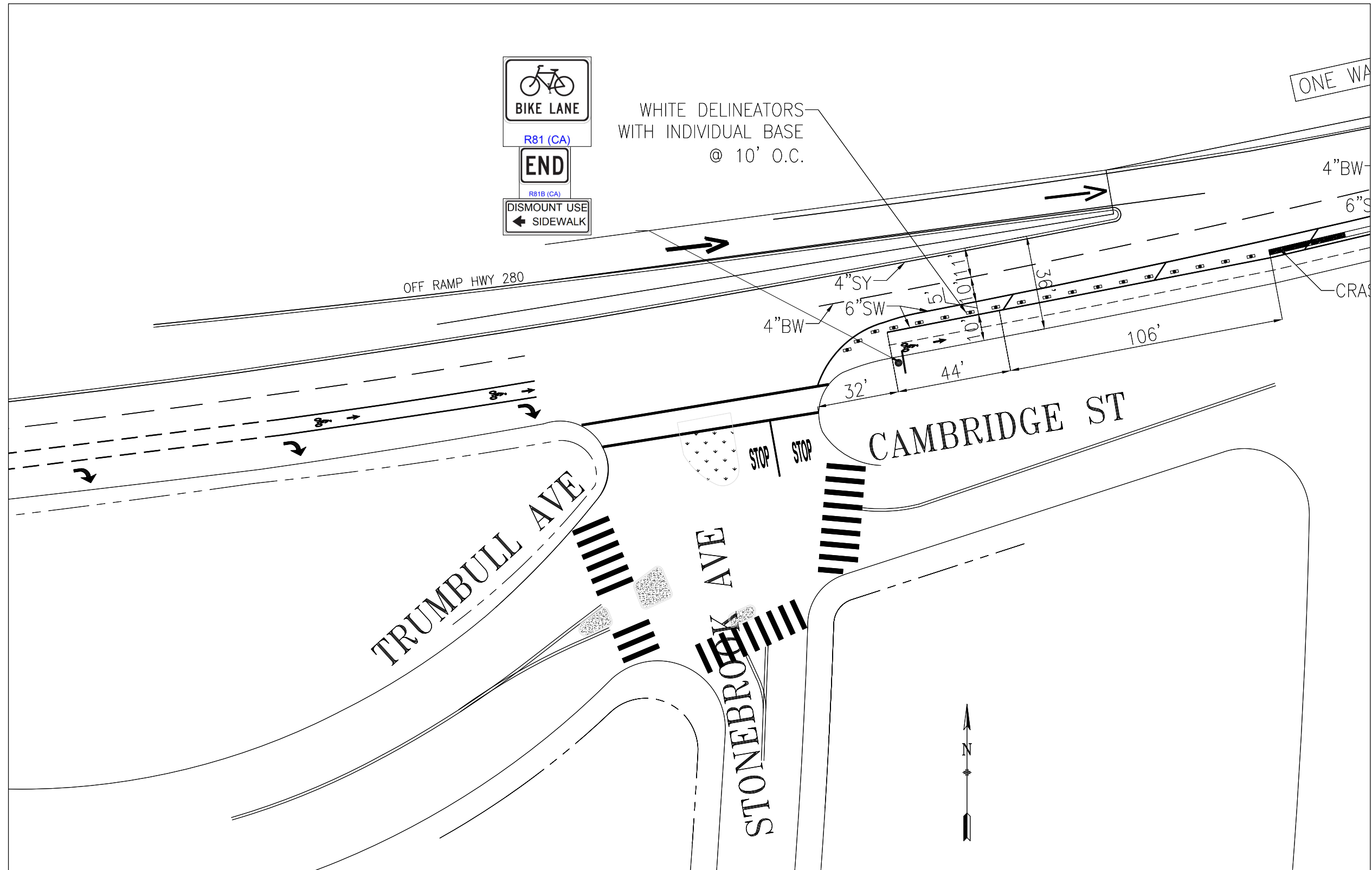
CONTRACT NO.
DRAWING NO.
FILE NO.
REV. NO.



NO.	DATE	DESCRIPTION	BY	APP
TABLE OF REVISIONS				
CHECK WITH TRACING TO SEE IF YOU HAVE LATEST REVISION				



DRAWN:		DATE:		APPROVED		SCALE:		CONTRACT NO.	
CHECKED:		DATE:		SENIOR ENGINEER				DRAWING NO.	
				CITY TRAFFIC ENGINEER		SHEET/SHEETS:		FILE NO.	
				DATE:				REV. NO.	

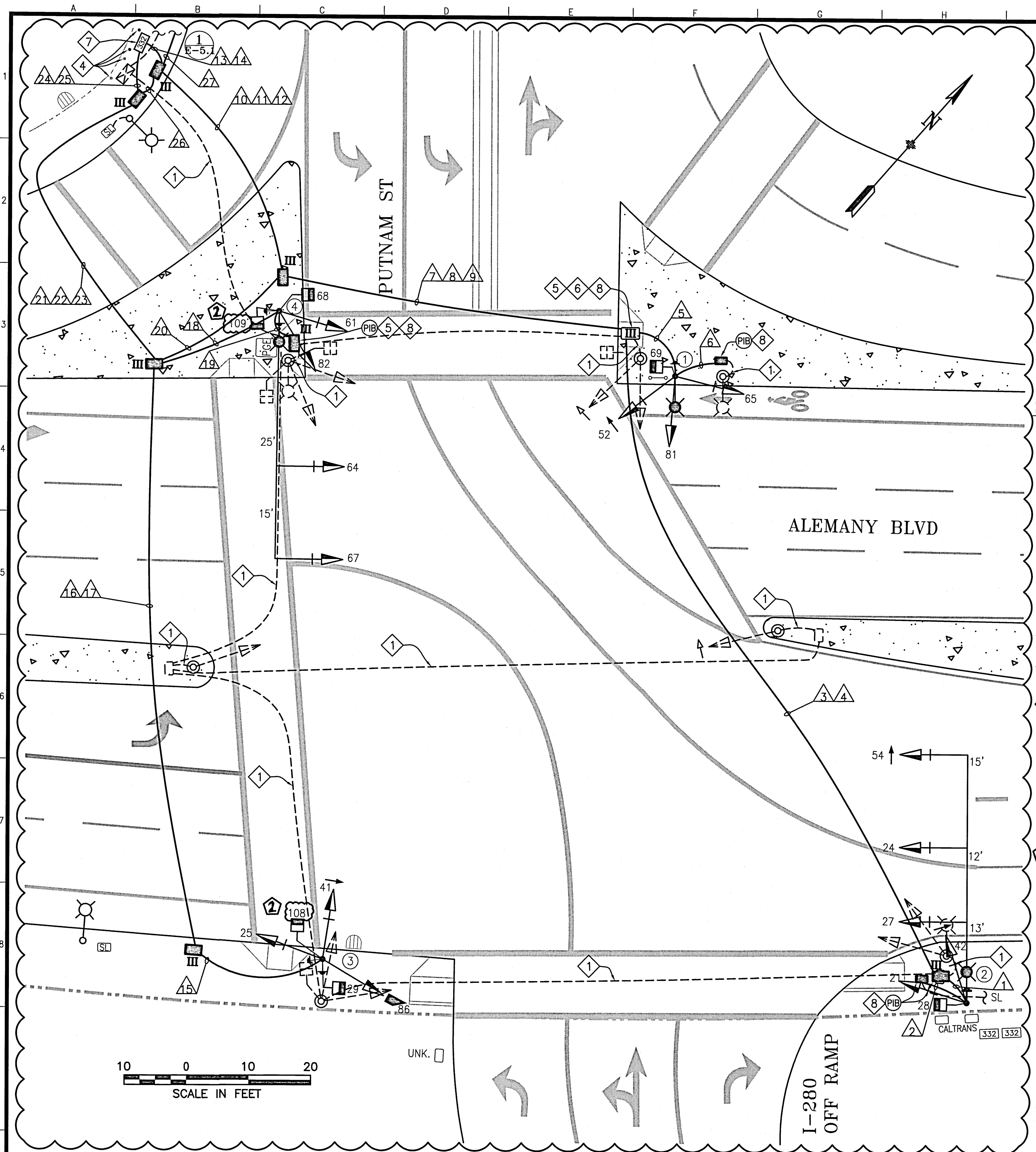


NO.	DATE	DESCRIPTION	BY	APP
TABLE OF REVISIONS				
CHECK WITH TRACING TO SEE IF YOU HAVE LATEST REVISION				



DRAWN:	DATE:	APPROVED	SCALE:
CHECKED:	DATE:	SENIOR ENGINEER	
		CITY TRAFFIC ENGINEER	

SHEET/SHEETS:	CONTRACT NO.
	DRAWING NO.
	FILE NO.
	REV. NO.

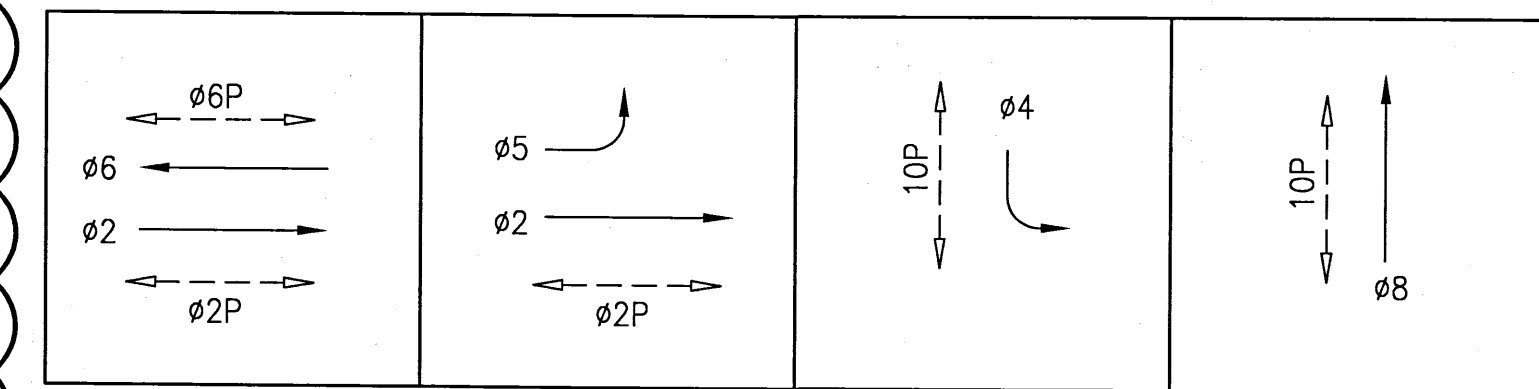


POLE No.	TYPE OF POLE	LUMINAIRE VOLTAGE/WATTAGE	VEHICLE SIGNAL				PEDESTRIAN SIGNAL			REMARKS		
			No.	TYPE	MOUNTING	VISORS	LOUVERS	No.	TYPE		MOUNTING	
①	CITY STANDARD STREET LIGHT	A2 145 9	52 65 81	3S12" LA 3S12" LA 3S12" LA	SV-3-TA	T T T			69	1S-COUNT	SP-1	APS-2W BACKPLATE BACKPLATE BACKPLATE
②	26-4-100 W/ 40' MAST ARM AND 10' LA	A2 145 9	21 42 24 27 54	3S12" LA 3S12" LA 3S12" LA 3S12" LA	SV-2-TC MAS MAS MAS	T T T T			28	1S-COUNT	SP-1	APS-2W BACKPLATE BACKPLATE BACKPLATE BACKPLATE
③	1-A (15')		25 41 86	3S12" LA 3S12" LA 3S12" LA	SV-3-TA	T T LA			② 108 29	1S-COUNT 1S-COUNT	SP-1 SP-1	APS-2W x2 BACKPLATE BACKPLATE BACKPLATE
④	26-3-100 W/ 40' MAST ARM AND 6' LA	A2 145 9	61 82 64 67	3S12" LA 3S12" LA 3S12" LA 3S12" LA	SV-2-TA MAS MAS	T T T T			② 109 86	1S-COUNT 1S-COUNT	SP-1 SP-1	APS-2W x2 BACKPLATE BACKPLATE BACKPLATE

**SHEET NOTES:**

- ① ABANDON EXISTING CONDUIT AND WIRING, CUT EXISTING CONDUIT TO PULLBOX WALL AND CAP ENDS. PRIOR TO REMOVING OF EXISTING CABLES IN EXISTING CONDUIT, FIELD VERIFY AND MAINTAIN SERVICES TO STREETLIGHTS AND TRAFFIC CONTROLLER.
- ② INSTALL CITY FURNISHED ONE SECTION LED PEDESTRIAN COUNTDOWN SIGNAL MODULE IN CONTRACTOR FURNISHED ONE SECTION PEDESTRIAN SIGNAL HOUSING.
- ③ CITY FORCES TO INSTALL CITY FURNISHED APS PUSH BUTTONS ON POLES (PER ADA) AS SHOWN ON INTERSECTION DRAWING AND AS INDICATED IN POLE & EQUIPMENT SCHEDULE. CONTRACTOR TO F/I WIRING AS SHOWN IN THE CONDUIT AND WIRING SCHEDULE.
- ④ R/C EXISTING GUARD POSTS ADJACENT TO EXISTING CABINET. F/I NEW GUARD POSTS ADJACENT TO NEW CABINET.
- ⑤ REMOVE CONCRETE DEBRIS FROM PULL BOX. CLEAN CONDUITS AND ANY REMAINING WIRES.
- ⑥ BRING NEW CONDUITS INTO EXISTING PULL BOX. CONTRACTOR SHALL BE CAREFUL TO AVOID DAMAGE TO EXISTING PULL BOX.
- ⑦ CONSTRUCT TYPE 332 FOUNDATION TO ELEVATION OF 18-INCH HEIGHT ABOVE GRADE.
- ⑧ SPLICE NEW STREET LIGHT TO EXISTING STREETLIGHT SERVICE. PROVIDE 10A FUSE AND FUSE HOLDER FOR NEW STREETLIGHT. MAINTAIN EXISTING STREET LIGHT CIRCUIT.
- ⑨ SEE LIGHTING FIXTURE SCHEDULE ON E-0.1

**PHASE DIAGRAM**

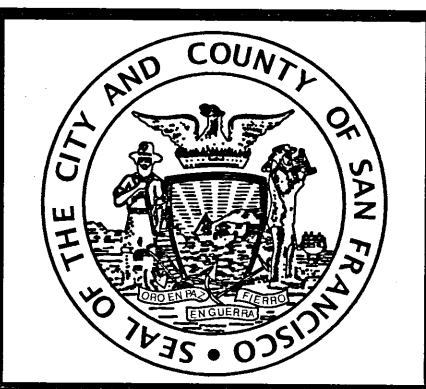


NOTE:  
THIS AUTOCAD DRAWING HAS BEEN REVISED AND REPLOTTED SUBSEQUENT TO INTERNAL ENGINEERING APPROVAL AND SIGN-OFF. FOR THOSE SIGNATURES, SEE THE DRAWING PLOTTED AND ISSUED PREVIOUSLY DURING BIDDING. THE SIGNED DRAWING REMAINS VALID EXCEPT FOR THE CHANGES ONLY AS CLEARLY MARKED ON THIS DRAWING AND ISSUED UNDER THIS LATEST REVISION NUMBER AS SHOWN IN THE TABLE OF REVISIONS LOCATED AT THE LOWER LEFT CORNER OF THE DRAWING. ALL ISSUED REVISIONS SUBSEQUENT TO PREVIOUSLY PLOTTED DRAWING DURING BIDDING REMAIN VALID UNLESS SUPERSEDED BY LATER ISSUED REVISIONS. CHECK ALL ISSUED REVISIONS OF THIS DRAWING.

NO.	DATE	DESCRIPTION	BY	APP.
②	8/2018	PCD #2 MISCELLANEOUS ELECTRICAL REVISIONS	JH/ST	GD/SL

TABLE OF REVISIONS

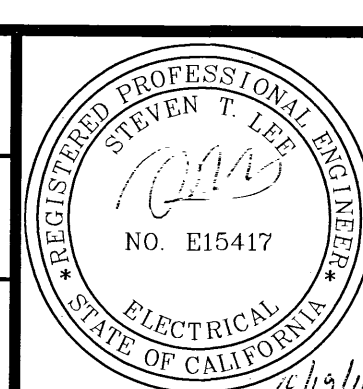
REFERENCE INFORMATION & FILE NO. OF SURVEYS



**BUREAU OF DESIGN & ENGINEERING**  
CITY & COUNTY OF SAN FRANCISCO  
SAN FRANCISCO PUBLIC WORKS  
30 VAN NESS AVENUE, 5TH FLOOR  
SAN FRANCISCO, CA 94102 - 6028

Section Mgr: PHILIP THWIN  
Deputy Bureau Mgr: IQBALBHAI DHAPA  
Bureau Mgr: PATRICK RIVERA

DESIGNED: DATE: JH/CMF 5/2017  
DRAWN: DATE: JH/CMF 5/2017  
CHECKED: DATE: GD/SL 5/2017



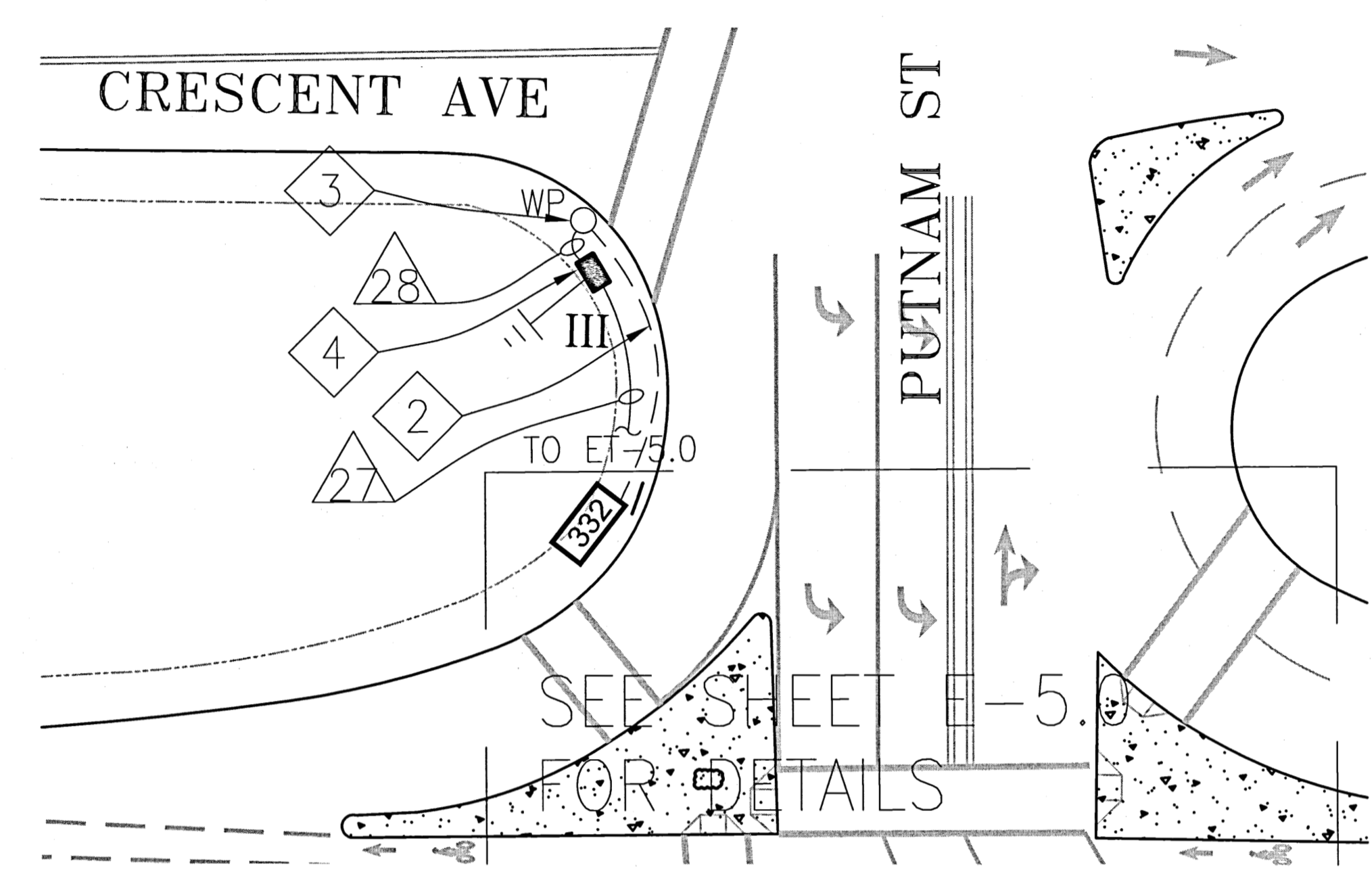
SCALE: AS SHOWN  
SHEET OF SHEETS: 18 OF 63

CONTRACT 34 - TRAFFIC SIGNAL MODIFICATIONS  
**ALEMANY BLVD, CRESCENT AVE, AND PUTNAM ST. TRAFFIC SIGNAL WORK POLE AND EQUIPMENT SCHEDULE**

CONTRACT NO. 2805J  
DRAWING NO. E-5.0  
FILE NO. 109,554  
REV. NO. 1

CONDUIT AND WIRING SCHEDULE (FURNISH AND INSTALL CONDUIT AND WIRES)

CONDUIT RUN NUMBER	1	2	3	4	5	6	7	8	9	10	11	12	13	14	15	16	17	18	19	20	21	22	23	24	25	26	27	28	
CONDUIT SIZE (INCH)	2	2	2	2	2	2	2	2	2	2	2	2	2	2	2	2	2	2	2	2	2	2	2	2	2	2	2	2	3
NOTES		GRS		SP		GRS			SP			SP					SP	GRS	SP			SP		SP	SP				
VEHICLE SIGNAL 21	3		3				3			3				3															
VEHICLE SIGNAL 24	3		3				3			3				3															
VEHICLE SIGNAL 27	3		3				3			3				3															
VEHICLE SIGNAL 42	3		3				3			3				3															
VEHICLE SIGNAL 54	3		3				3			3				3															
PED SIGNAL 28	2		2				2			2				2															
APS XING FWY RAMP ON POLE 2	2		2				2			2				2															
VEHICLE SIGNAL 52						3			3				3			3													
VEHICLE SIGNAL 65						3			3				3			3													
VEHICLE SIGNAL 81						3			3				3			3													
PED SIGNAL 69						2			2				2			2													
APS XING CRESCENT ON POLE 1						2			2				2			2													
VEHICLE SIGNAL 25										3		3									3			3					
VEHICLE SIGNAL 41										3		3									3			3					
VEHICLE SIGNAL 86										2		2									2			2					
PED SIGNAL 29										2		2									2			2					
PED SIGNAL 108										2		2									2			2					
APX XING FWY RAMP ON POLE 3										2		2									2			2					
APS XING ALEMANY ON POLE 3										2		2									2			2					
VEHICLE SIGNAL 61																					3			3					
VEHICLE SIGNAL 64																					3			3					
VEHICLE SIGNAL 67																					3			3					
VEHICLE SIGNAL 82																					3			3					
PED SIGNAL 109																					2			2					
PED SIGNAL 68																					2			2					
APS XING CRESCENT ON POLE 4																					2			2					
APS XING ALEMANY ON POLE 4																					2			2					
#14 NEUTRAL	5					2						3																	
#14 SPARE						3				3			3										3			3			
TOTAL #14 WIRES	24					22				15			22			13					22			13					
#10 WIRES NEUTRAL						1						1		1							1		1			2			
#10 WIRES STREET LIGHT						2																	2						
#8 WIRES STREET LIGHT																													
#8 WIRES (120 V SERVICE)																							2					2	3
#6 BSCW																													
INTERCONNECT 12C CABLE																													



POWER SERVICE DETAIL  
NOT TO SCALE

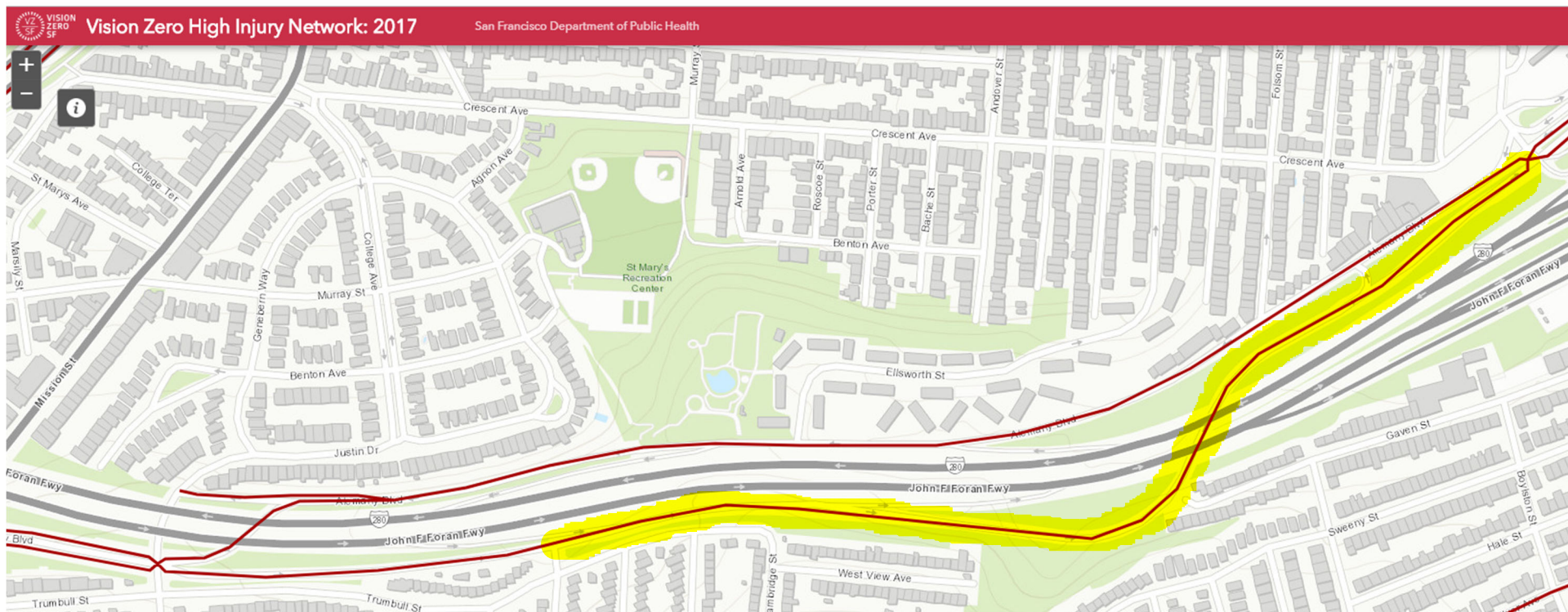
NOTE:  
THIS AUTOCAD DRAWING HAS BEEN REVISED AND REPLOTTED SUBSEQUENT TO INTERNAL ENGINEERING APPROVAL AND SIGN-OFF. FOR THOSE SIGNATURES, SEE THE DRAWING PLOTTED AND ISSUED PREVIOUSLY DURING BIDDING. THE SIGNED DRAWING REMAINS VALID EXCEPT FOR THE CHANGES ONLY AS CLEARLY MARKED ON THIS DRAWING AND ISSUED UNDER THIS LATEST REVISION NUMBER AS SHOWN IN THE TABLE OF REVISIONS LOCATED AT THE LOWER LEFT CORNER OF THE DRAWING. ALL ISSUED REVISIONS SUBSEQUENT TO PREVIOUSLY PLOTTED DRAWING DURING BIDDING REMAIN VALID UNLESS SUPERSEDED BY LATER ISSUED REVISIONS. CHECK ALL ISSUED REVISIONS OF THIS DRAWING.

SHEET NOTES:

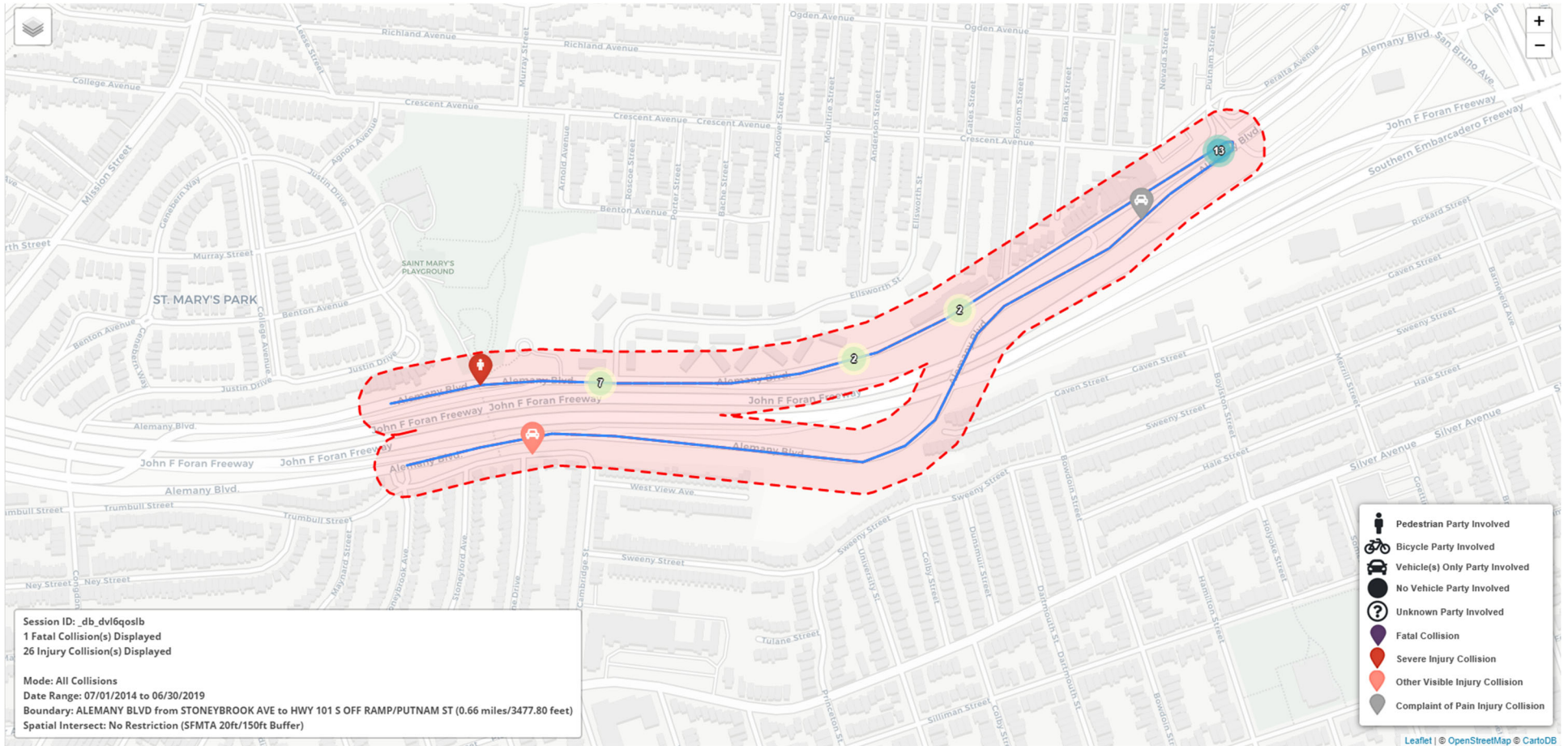
- 1 F/I PER GROUNDING LAYOUT DETAIL AND PROJECT SPECIFICATIONS SECTION 34 41 13.
- 2 ABANDON EXISTING CONDUIT AND REMOVE EXISTING WIRING, CUT EXISTING CONDUIT TO PULLBOX WALL AND CAP ENDS. PRIOR TO REMOVING OF EXISTING CABLES IN EXISTING CONDUIT, FIELD VERIFY AND MAINTAIN SERVICES TO STREETLIGHTS
- 3 CONTROLLER SERVICE POINT IS A PG&E WOOD POLE LOCATED AT THE SOUTHWEST CORNER OF CRESCENT AVE. AND PUTNAM ST. CONSTRUCTION OF (N) PG&E SERVICE RISER REQUIRES TS SHUTDOWN AND DEMOLITION OF (E) SERVICE RISER. COORDINATE WITH PG&E THROUGH SFPUC FOR DEACTIVATION OF (E) SERVICE AND ACTIVATION OF (N) SERVICE. R/C (E) RISER ON WOOD POLE. COORDINATE WITH SFPD FOR TRAFFIC CONTROL DURING TS SHUTDOWN. CONTRACTOR TO FIELD VERIFY AND MAINTAIN SERVICES TO STREETLIGHTING.
- 4 F/I 40A INLINE FUSE AND FUSE HOLDER FOR TRAFFIC SIGNAL SERVICE DISCONNECT IN FIRST PULL BOX NEXT TO THE NEW PG&E SERVICE POINT.

REFERENCE INFORMATION & FILE NO. OF SURVEYS 8/2018 PCD #2 MISCELLANEOUS ELECTRICAL REVISIONS NO. DATE DESCRIPTION BY APP.			BUREAU OF DESIGN & ENGINEERING CITY & COUNTY OF SAN FRANCISCO SAN FRANCISCO PUBLIC WORKS 30 VAN NESS AVENUE, 5TH FLOOR SAN FRANCISCO, CA 94102 - 6028	Section Mgr: PHILIP THWIN Deputy Bureau Mgr: IQBALBHAI DHAPA Bureau Mgr: PATRICK RIVERA	Date: DESIGNED: DATE: JH/CMF 5/2017 DRAWN: DATE: JH/CMF 5/2017 CHECKED: DATE: GD/SL 5/2017		SCALE: NONE SHEET OF SHEETS 19 OF 63	CONTRACT 34 - TRAFFIC SIGNAL MODIFICATIONS ALEMANY BLVD, CRESCENT AVE, AND PUTNAM ST. CONDUIT AND WIRING SCHEDULE	CONTRACT NO. 2805J DRAWING NO. E-5.1 FILE NO. 109,555 REV. NO. 1
---	--	--	---	---	---	--	---	---	---

# Vision Zero High Injury Network 2017: Alemany Boulevard



# Alemany from Stoneybrook to Putnam: Collisions



One bicycle collision, the bicyclist was going to fast and lost control of their bicycle and fell.

No Pedestrian collisions in the project limits (The icon shows a pedestrian collision that occurred outside the project limits)

Eastbound left turn collisions at Putnam, this is being address by Special Projects signal project, completing Summer 2019.

**Alemany, Crescent, Putnam, and Freeway Off-Ramp**

DESCRIPTION: Phase 5 becomes fully protected LT, new phase 2P. New Y, AR, FRH, Min Walk, Min & Max G.

CHANGE: 21  
 CNN #: 33663000  
 ENGINEER: J. Hornbostel  
 Revision date: 10/30/2018  
 Programmed by:  
 Installed by:  
 Date Completed:

NOTES: Page 1 of 2

PHASE	STREET	EmerFlash	ProgFlash	Controller:	2070
2	Alemany EB	R	--	Cabinet:	ITS 342
4	Crescent/PutnamSB	R	--	Oper. Date:	6/6/1956
5	Alemany EBLT	R	--	System:	Isolated
6	Alemany WB	R	--	Master:	n/a
8	Fwy Off-Ramp NB	R	--	Cascade:	n/a

Actuation       Transit Priority       Preemption

**Steady Demand Sequence**

X = YES      -- = NO	S	M	T	W	T	F	S	CYCLE	SPLIT	OFFSET	FLASH
7:00 to 9:00	--	X	X	X	X	X	--	2	1	--	--
15:00 to 19:00	--	X	X	X	X	X	--	3	1	--	--
6:00 to 16:00	X	--	--	--	--	--	X	4	1	--	--
ALL OTHER TIMES	X	X	X	X	X	X	X	1	1	--	--

STREET	PHASE	1	2	3	4	5	6	7	8	9	10	11	12	13	14	15
Alemany EB	2															
Crescent/PutnamSB	4															
Alemany EBLT	5															
Alemany WB	6															
Fwy Off-Ramp NB	8															
Peds Xing Fwy Ramp SS	2P															
Peds Xing Crescent/Putnam NS	6P															
Peds Xing Alemany WS	10P															

CSO	CYCLE (seconds)	OFFSET (seconds)	SIGNAL INTERVALS (seconds)														
			1	2	3	4	5	6	7	8	9	10	11	12	13	14	15
11-	75.0	--	6.0	5.0	2.0	6.0	2.0	12.0	5.0	1.0	6.0	2.5	4.0	2.5	14.0	5.0	2.0
21-	90.0	--	6.0	5.0	2.0	21.0	2.0	12.0	5.0	1.0	6.0	7.5	4.0	2.5	9.0	5.0	2.0
31-	90.0	--	6.0	5.0	2.0	21.0	2.0	12.0	5.0	1.0	6.0	2.5	4.0	2.5	14.0	5.0	2.0
41-	90.0	--	11.0	5.0	2.0	6.0	2.0	12.0	5.0	1.0	16.0	7.5	4.0	2.5	9.0	5.0	2.0

Alemany, Crescent, Putnam, and Freeway Off-Ramp

CHANGE 21

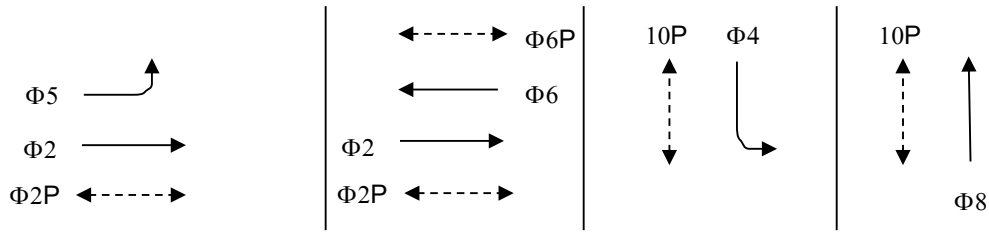
ws3.0



**Alemany, Crescent, Putnam, and Freeway Off-Ramp**

Alemany, Crescent, Putnam, and Freeway Off-Ramp

**PHASE DIAGRAM**



Are there conflicting protected left turn phases? n/a

**BASE TIMINGS:**

Phase	1	2	3	4	5	6	8	10P
Movement		EB		SB	EBLT	WB	NB	WSP
Absolute Min Green (whole #)		14		8	6	12		
Early Walk		--				--		--
Yellow		5.0		4.0	5.0	5.0	5.0	5.0
Red Clearance		1.0		2.5	2.0	1.0	2.0	2.0
Absolute Min Walk (whole #)		7				7		6
FRH (whole #)		14				12		23

**ACTUATION: \*\* if Actuation setting vary by plan, use special comments.**

Phase	1	2	3	4	5	6	8	10P
Vehicle Detection Type		NONE		NONE	Wireless	NONE	NONE	
Ped Detection Type		NONE				NONE		NONE
Vehicle Recall (Max, Min, Soft or None)		MAX		MAX	NONE	MAX	MAX	
Absolute Min Green (same as above)		14		8	6	12		
Vehicle Extension (seconds)		--		--	3	--	--	
Max Green (only used for FREE)	VARIES BY DIAL -- SEE PAGE 1 FOR MAX GREEN TIMES							
Pedestrian Recall (Yes or No)		YES				YES		YES
Ped Recycle (Yes or No)		YES				YES		YES
"WALK EXPAND" (Yes or No)		YES				YES		YES

**COORDINATION (phase splits = Max G + Y + R Clearance)**

Phase	1-4 Cycle length	1	2	3	4	5	6	8	10P	Offset (from page 1)
Dial 1 Splits										--
Min Transition										
Max Transition										
Dial 2 Splits										--
Min Transition										
Max Transition										
Dial 3 Splits										--
Min Transition										
Max Transition										
Dial 4 Splits										--
Min Transition										
Max Transition										
Coordinated Phases										

**Special Comments**

startup all-red = 6 seconds

Change

# ALEMANY AREA MAP

