



SFMTA

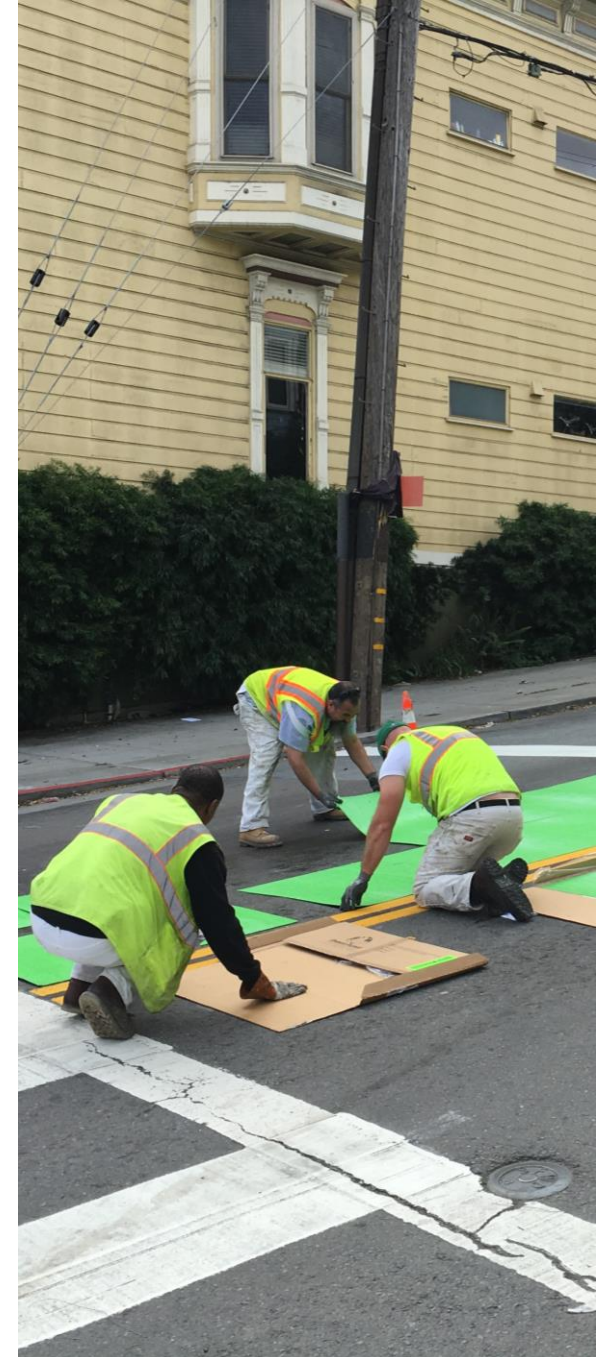
Page Street Bikeway Improvements Pilot



SFMTA Board of Directors
November 19, 2019

Background

- Since 2015, with the *Page Street Neighborway*, the SFMTA has engaged the community to develop several rounds of safety upgrades for Page Street.
- An eastbound 'center-running' bike lane was added to address a pattern of collisions b/w drivers turning right and bike riders continuing straight.
- A raised intersection at Page & Buchanan and six sidewalk extensions will start construction next year to improve pedestrian safety at intersections.
- SFMTA staff have documented support for exploring **turn restrictions and other measures to reduce vehicle volumes on Page Street.**

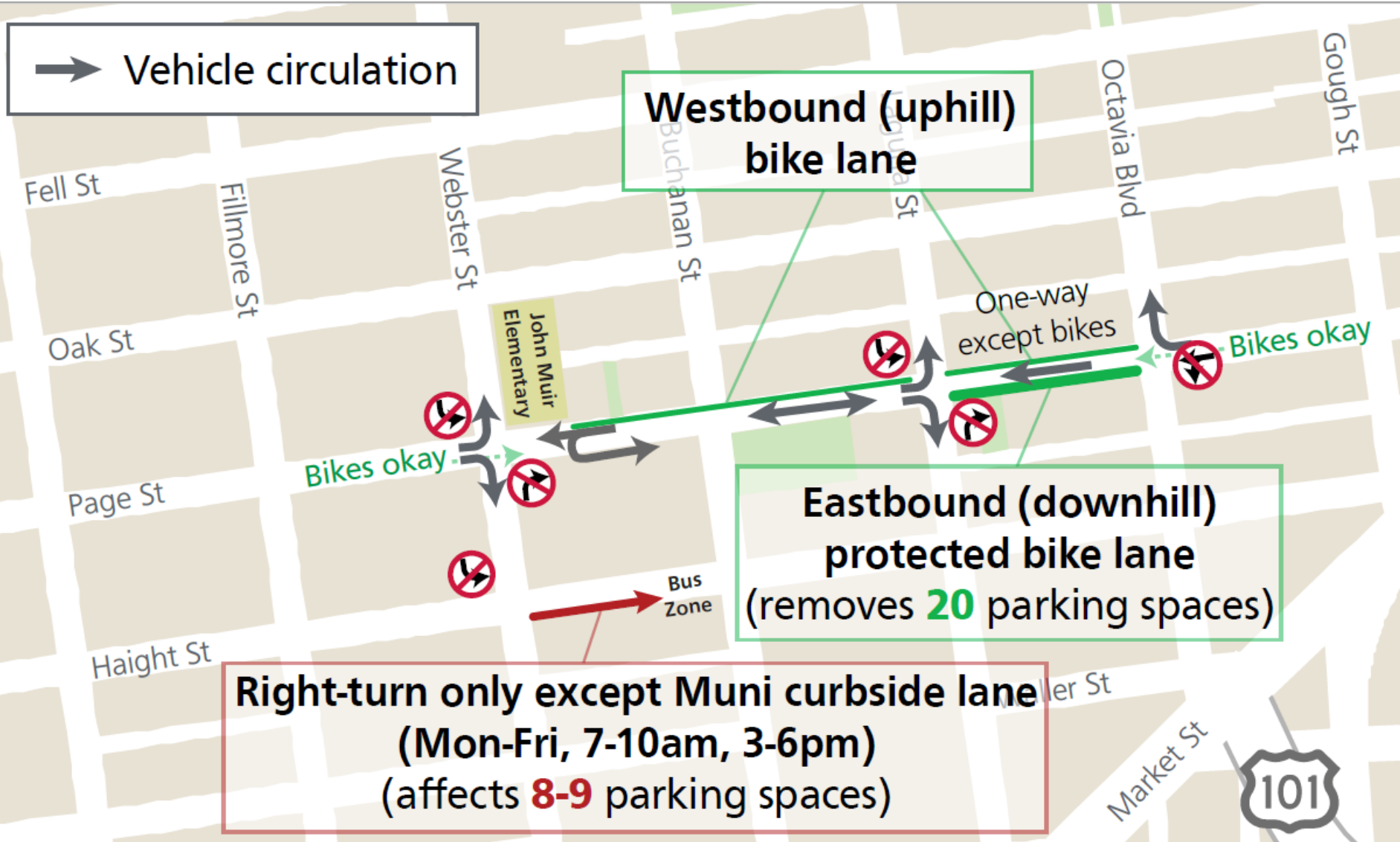


What are the issues?

- Although the 'center-running' bike lane has been well-received, **bicycle-involved collisions and conflicts with vehicles persist.**
- **Previous improvements have not addressed vehicle queuing** as people increasingly use Page and Haight streets to access the Central Freeway.
- While eastbound queuing worsens, **congestion is also growing in the *westbound* direction** between Gough and Octavia streets.
- Since traffic circulation changes involve trade-offs and it can be difficult to predict all effects, **a pilot project is recommended to comprehensively evaluate the changes.**

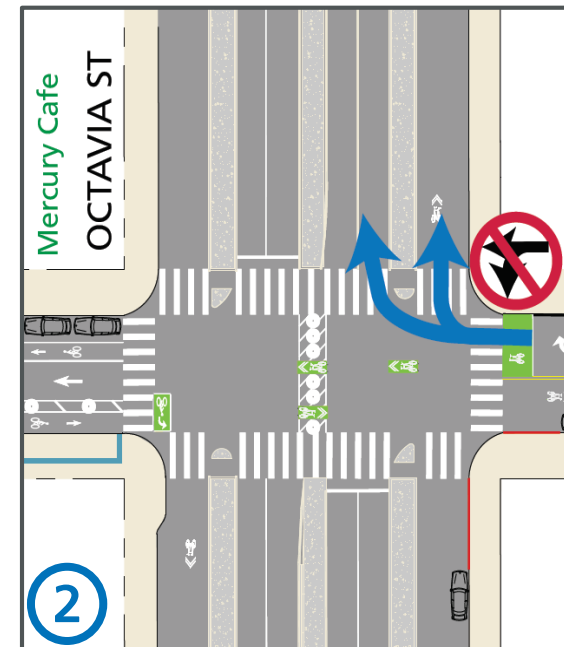
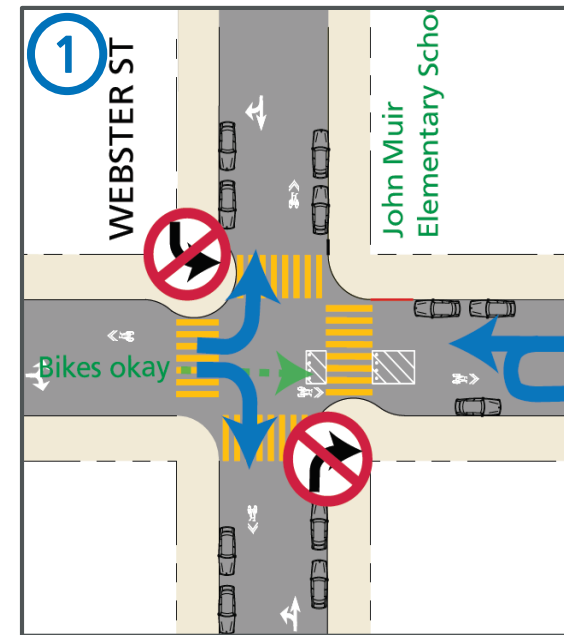
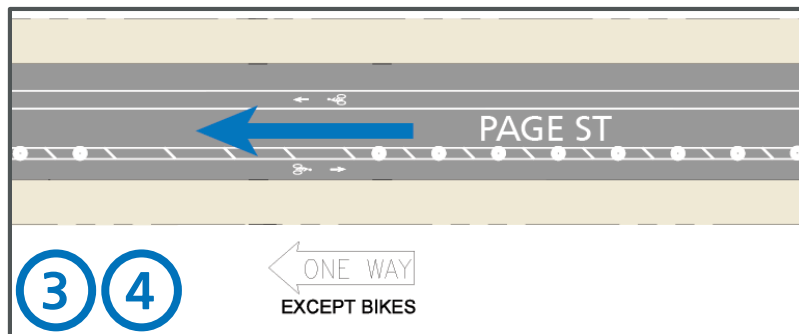


Pilot Proposal



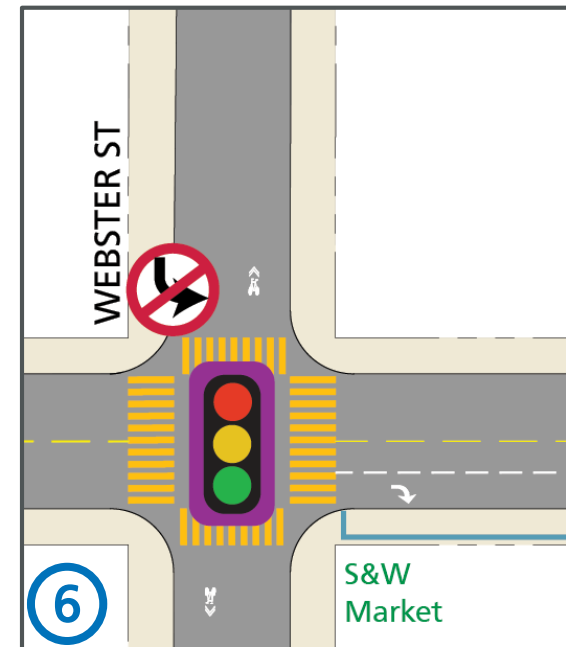
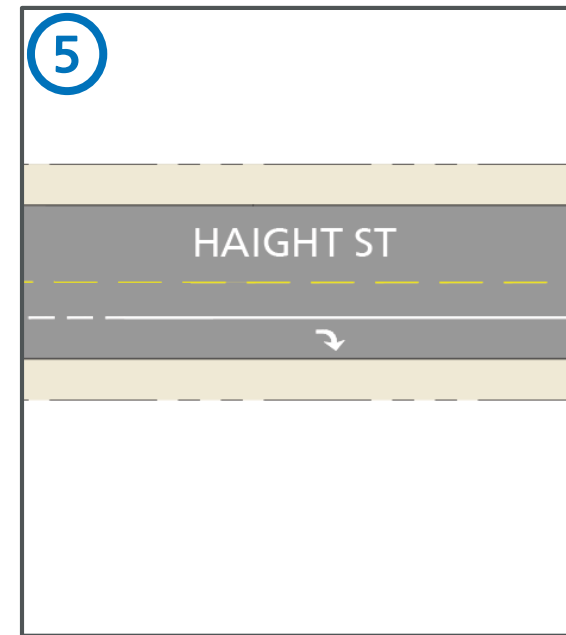
What will the pilot do?

1. Prohibit eastbound traffic from entering Page Street at Webster Street
2. Prohibit westbound thru traffic + left-turns on Page Street at Octavia Boulevard
3. Convert Page Street into a one-way street westbound with contra-flow protected bikeway between Octavia and Laguna
4. Add a westbound bike lane on Page Street between Octavia and Webster

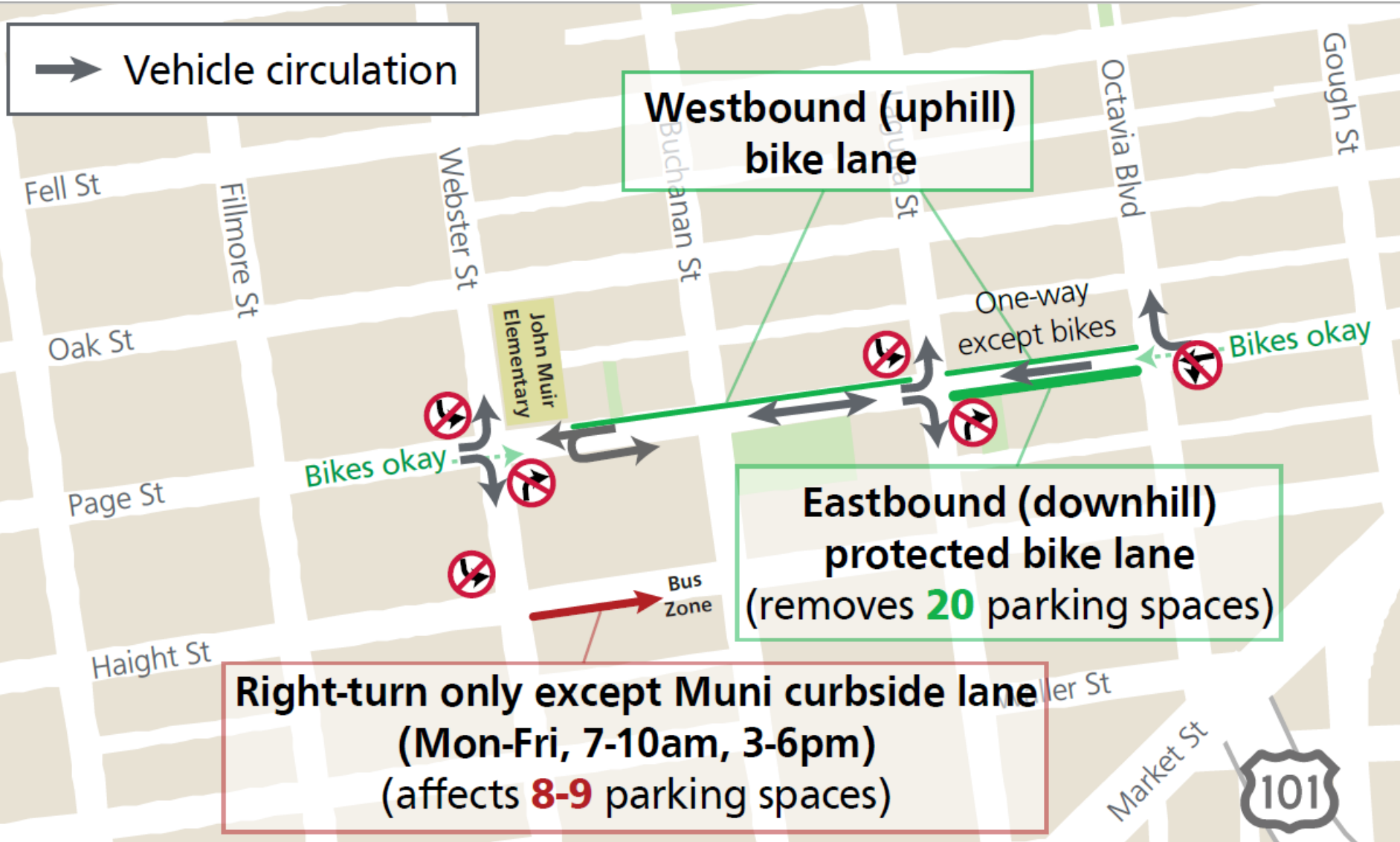


What will the pilot do?

5. Add a 'right-turn only, except Muni' lane to keep buses moving on Haight Street between Webster and Buchanan
 - *Effective Mon-Fri, 7-10am + 3-6pm*
 - *Parking permitted mid-day on weekdays, overnight, and all-day on weekends*
6. Prohibit left-turns from Webster onto Haight to discourage traffic diversion onto Haight Street
 - *Traffic signals at Haight/Webster and Haight/Buchanan are approved with a separate Muni Forward project, to be built next spring*



Pilot Proposal



Public Engagement

- **Open house** @ John Muir Elementary
 - 150+ attendees, 100's of comments
- **Door-to-door outreach**
- **Neighborhood group briefings**
- **Backpack mailer** for John Muir students
- **Office hours @ Sunday Streets**
- **Focused meetings with Haight merchants and residents**



Evaluation Plan

1. Safety

- Collisions and 'close calls'
- Crosswalk/intersection blocking
- Users' perception of safety and comfort

2. Mobility

- Vehicle and bicycle volumes
- Traffic circulation changes throughout neighborhood
- Transit travel time on Haight Street

3. Design effectiveness

- Compliance with traffic divertors and turn restrictions
- Violations of the Muni-only lane on Haight Street

4. A public perception survey covering these and other topics; on-going public engagement and solicitation of feedback

Schedule

- **IMPLEMENT – Early 2020**
- **EVALUATE – Spring 2020 + Fall 2020**
 - Opportunities for public engagement throughout
 - Also prepared for on-going adjustments
- **RESULTS – Early 2021**
 - Return to the SFMTA Board with a report of findings and recommendations

[SFMTA.com/PageBikeway](https://www.sfmta.com/PageBikeway)
PageBikeway@sfmta.com