



**SFMTA**  
Municipal Transportation Agency

The background of the slide is a blue-tinted photograph of a row of Victorian houses on Scott Street in San Francisco. A street sign with the word "Scott" is visible on one of the houses.

# SCOTT STREET TRAFFIC CALMING MEETING

08 | 28 | 2013

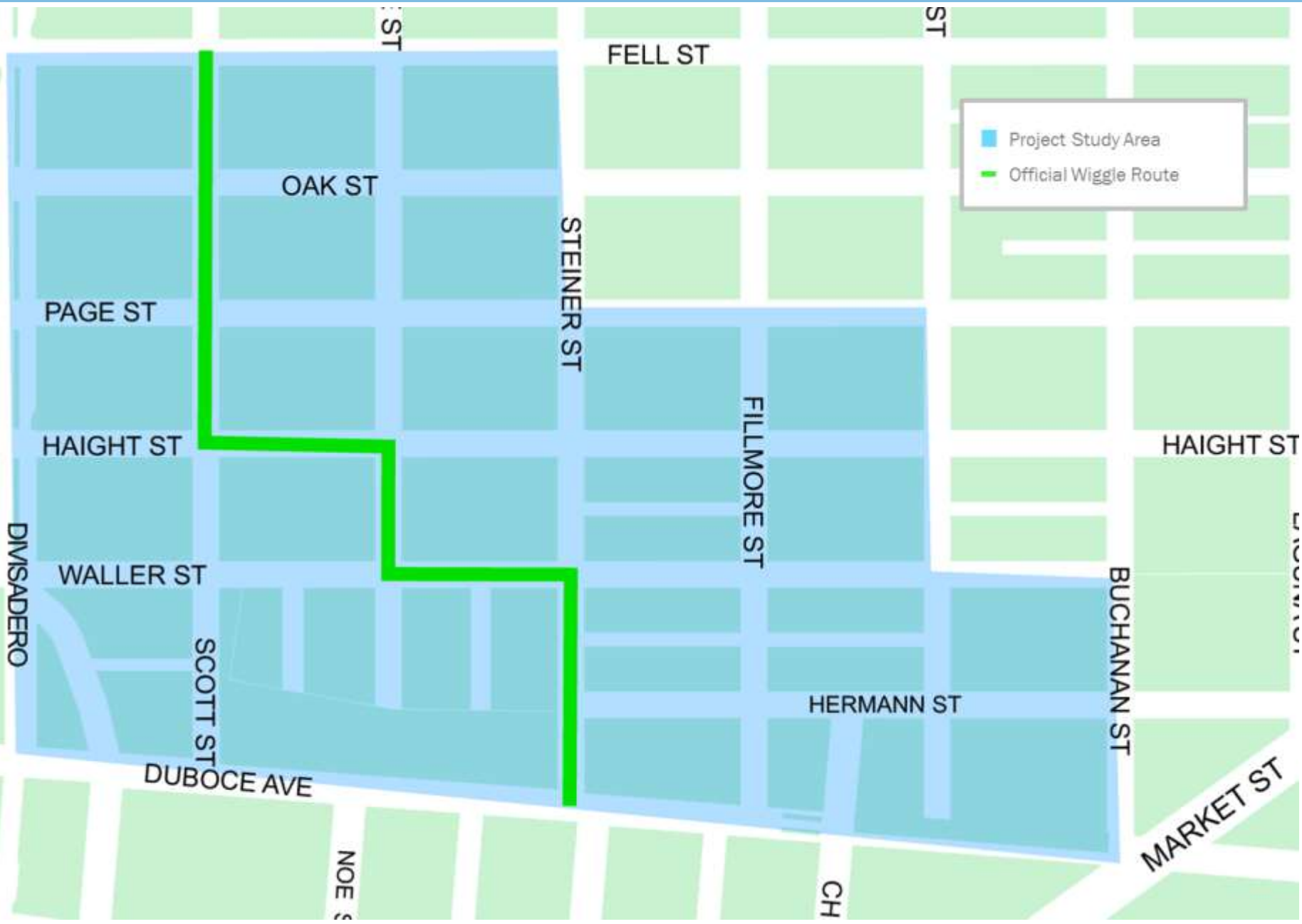
SAN FRANCISCO, CALIFORNIA

MIRIAM SORELL



# Wiggle Neighborhood Green Corridor

SFMTA  
Municipal Transportation Agency





# San Francisco Urban Watershed

SFMTA  
Municipal Transportation Agency



## LEGEND

 Ridgeline

 Watershed Boundary

 Historic Shoreline

 Historic Creekline

 Historic Slough

 Historic Tidal Marsh

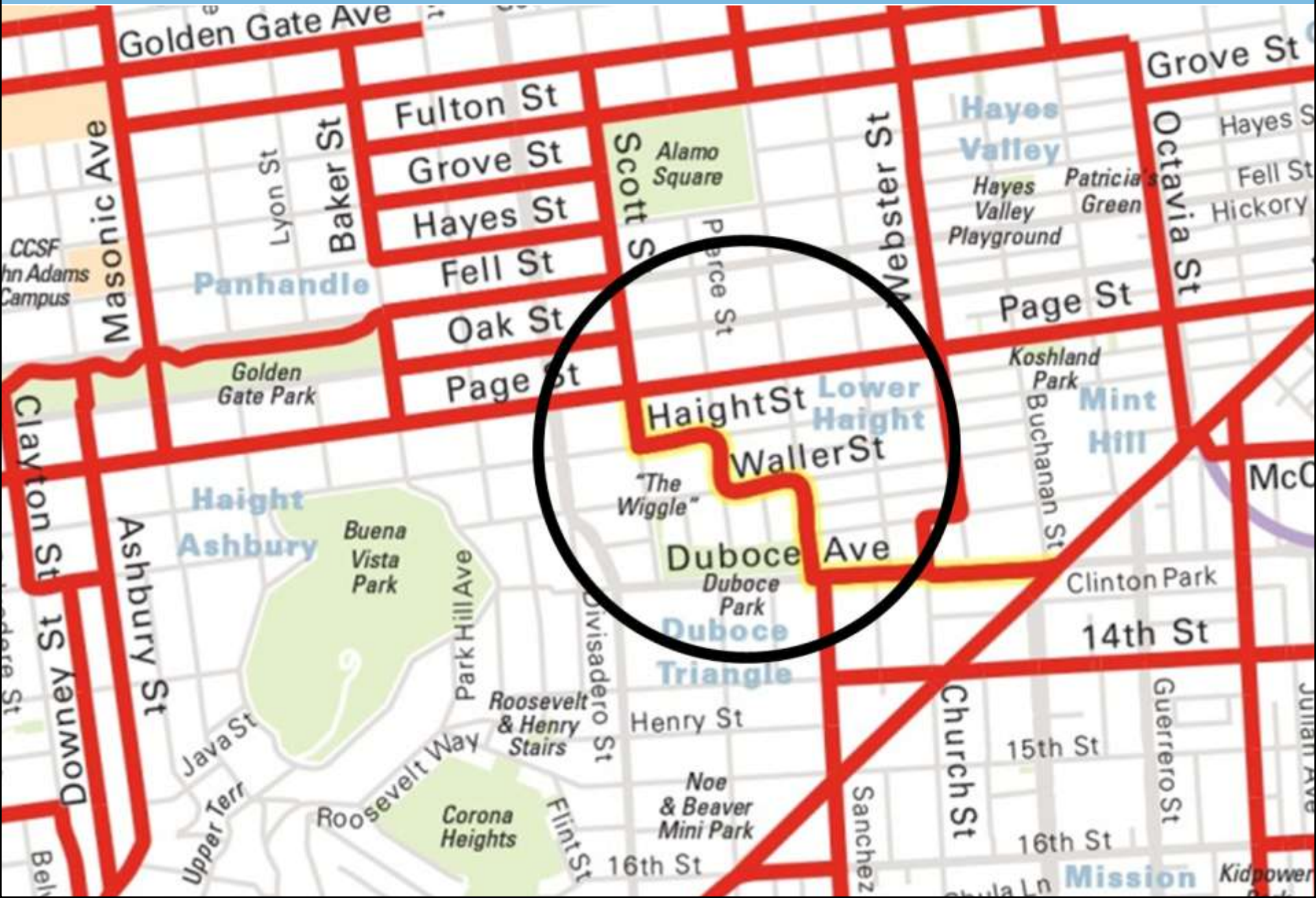
 Historic Lake





# San Francisco Bicycle Network

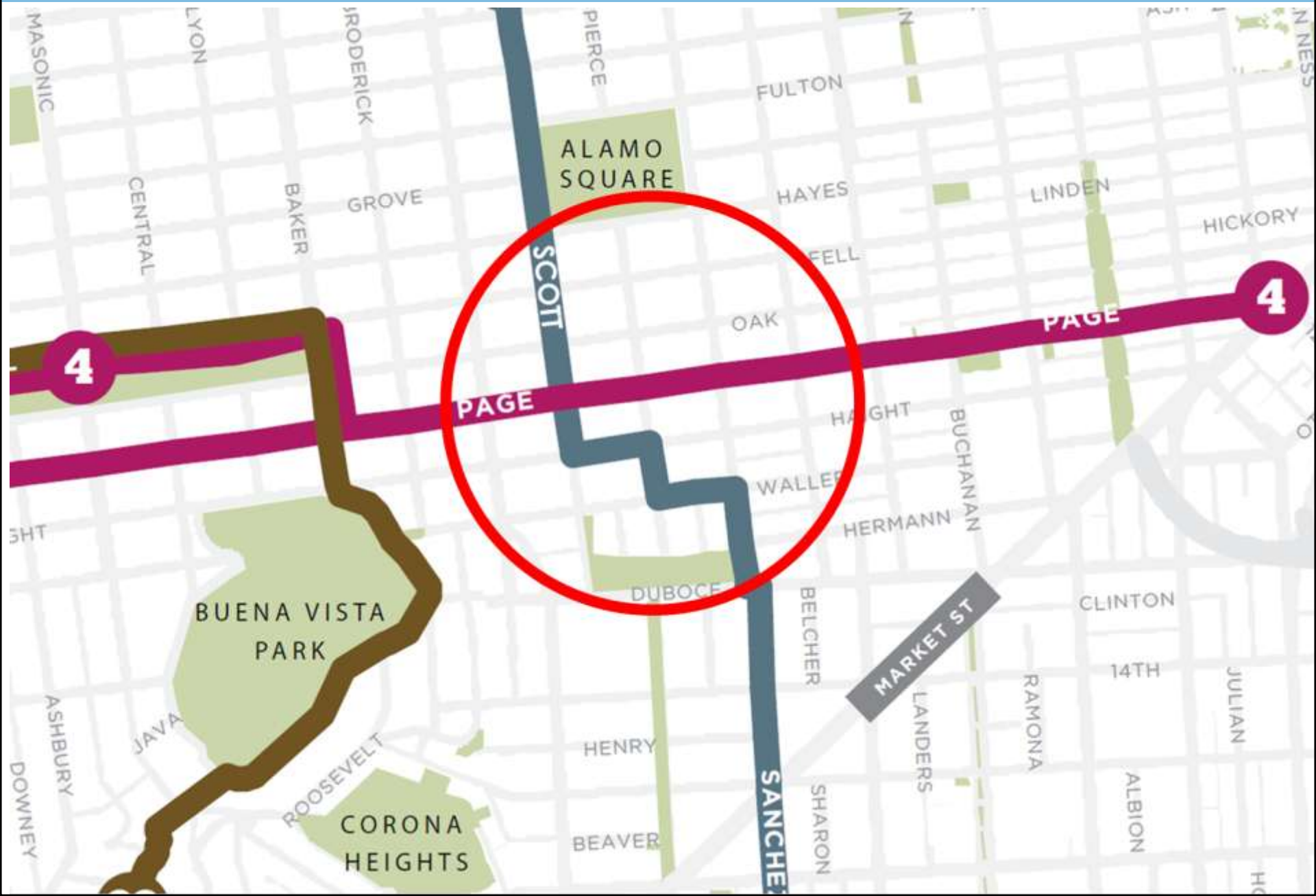
SFMTA  
Municipal Transportation Agency





# Green Connections Network

SFMTA  
Municipal Transportation Agency





- **Reduce the amount of stormwater going into the combined sewer system**
- **Improve conditions for people who walk, bike and live along the Wiggle**
  - Ensure that pedestrians feel safe crossing the street
  - Minimize congestion from motor vehicles
  - Encourage slow, safe speeds from all roadway users







## Permeable Paving



## Rain Gardens







## Bulb-out (Curb Extension)

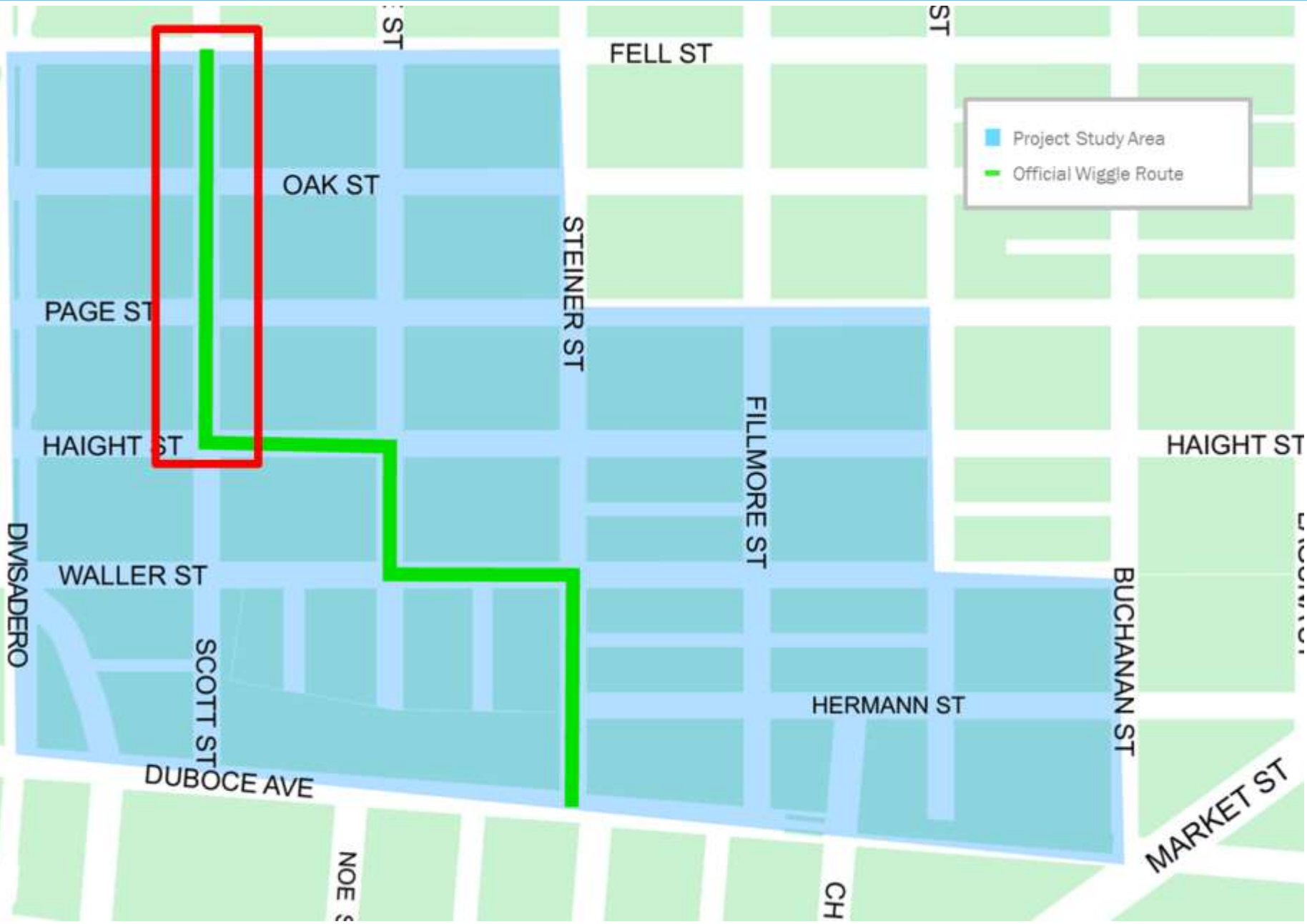


## Raised Crosswalk





# Focus on Scott Street





# Focus on Scott Street – Context







# Focus on Scott Street – Conditions

SFMTA  
Municipal Transportation Agency







## Fell Street



## Oak Street





## Page Street



## Haight Street





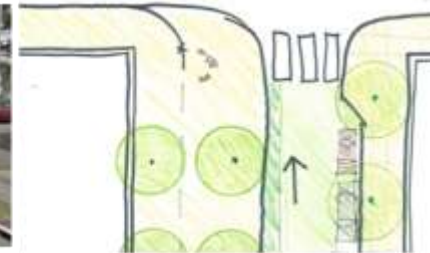


# Range of “Intensity” of Treatment

**Localized Change**



**Broader Effects**





# Intersection Changes







# Reduce Speeding





# Forced Turns







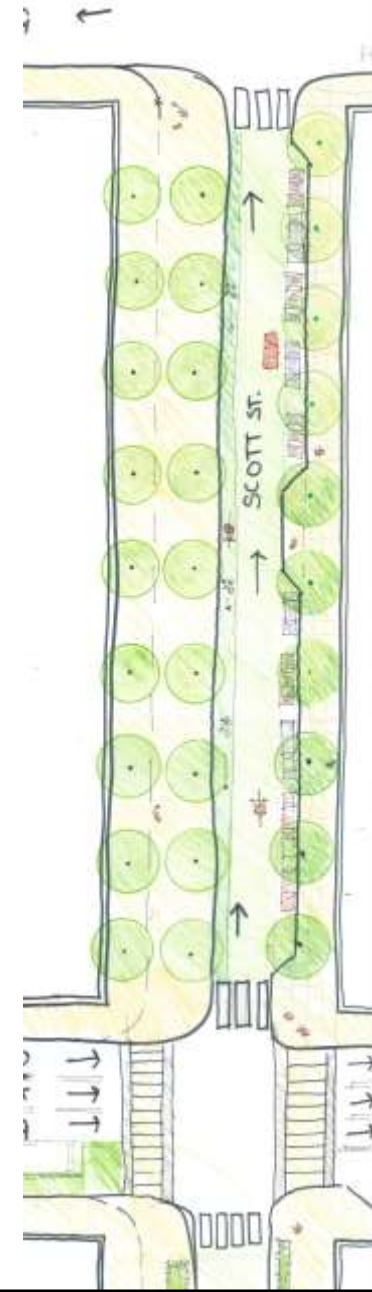
# Restrict Vehicle Access

SFMTA  
Municipal Transportation Agency





# One-Way Street





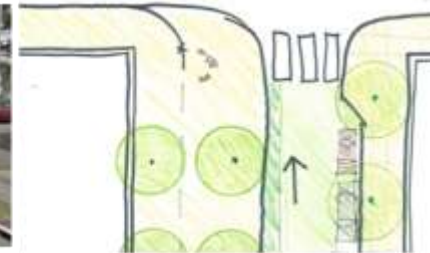


# Range of “Intensity” of Treatment

**Localized Change**



**Broader Effects**





- **Traffic diversion is fairly new/uncommon in SF**
  - Will have to carefully vet designs with other agencies
- **Could change the way you get to your home (by car)**
- **Could change traffic patterns on other nearby streets**



- 1. Did we capture the right goals for the project?**
- 2. What concerns or specific opportunities do you see at different locations?**
- 3. What level of “intensity” appeals to you and why?**



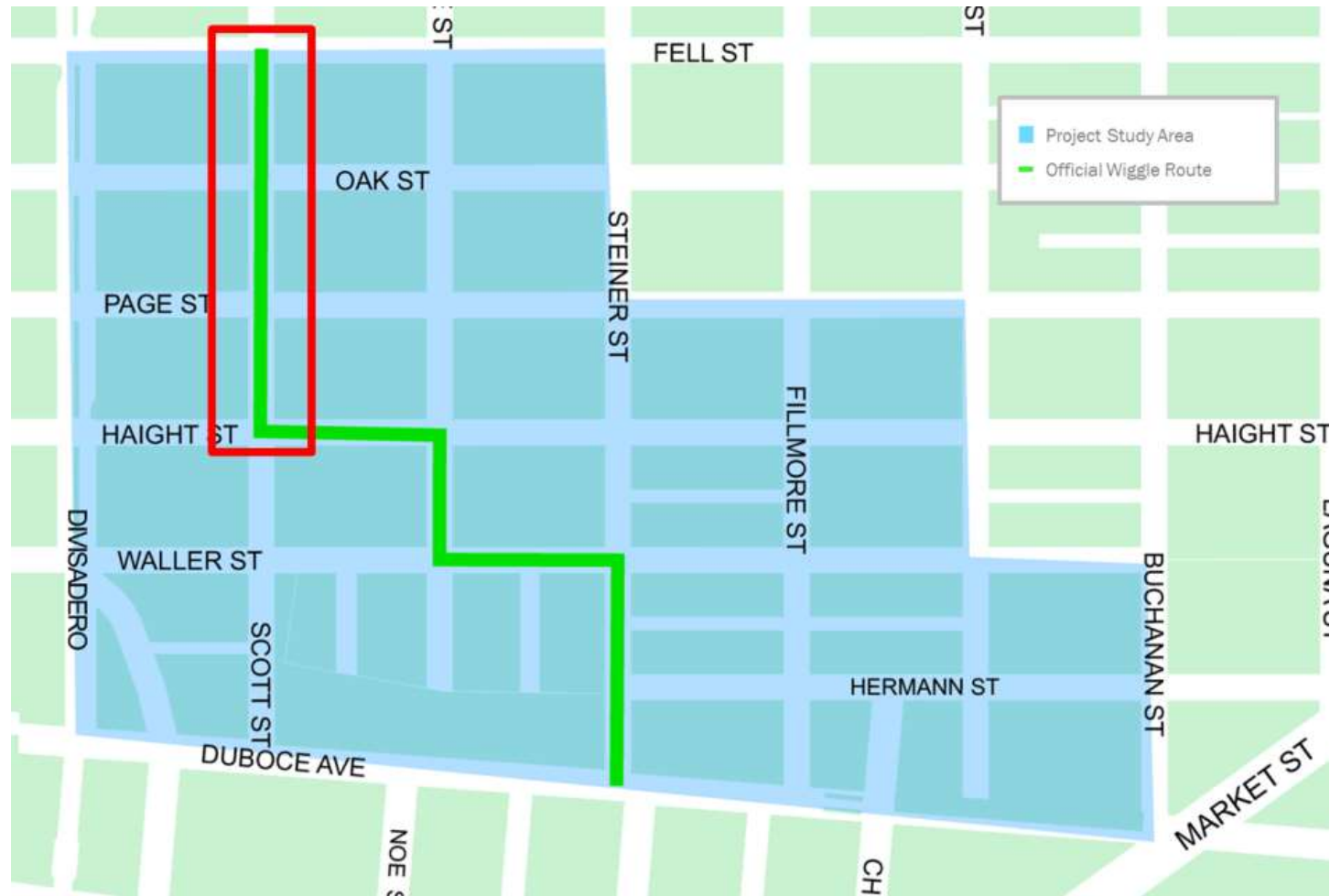


## **1. Did we capture the right goals for the project?**

- **Reduce the amount of stormwater going into the combined sewer system**
- **Improve conditions for people who walk, bike and live along the Wiggle**
  - Ensure that pedestrians feel safe crossing the street
  - Minimize congestion from motor vehicles
  - Encourage slow, safe speeds from all roadway users



## 2. What concerns or specific opportunities do you see at different locations?



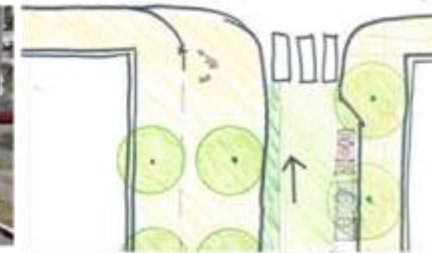


## 3. What level of “intensity” appeals to you and why?

Localized Change



Broader Effects







- **Late September: Second Community Open House with design alternatives**
- **October: Walks & Coffee Hours at specific spots**
- **Winter: Third Community Open House with preferred alternative**
- **2014-2015: Environmental Review & Design**
- **2015-2016: Construction**



**Miriam Sorell**

**San Francisco Municipal Transportation Agency**

**Planner, Livable Streets Subdivision**

**[miriam.sorell@sfmta.com](mailto:miriam.sorell@sfmta.com)**