

# Townsend Corridor Improvement Project



**Townsend Street between 4th Street and 5th Street is under construction!** The Townsend Corridor Improvement Project was approved by the San Francisco Municipal Transportation Agency (SFMTA) Board of Directors in November 2018 to create an efficient and safe Townsend Street, where all modes of travel are organized into comfortable and intuitive spaces. We thank you for your patience and attentiveness during this period of change.

## Project Overview

Townsend Street has the richest mix of travel modes of any street in San Francisco. 4th and Townsend, with the regional Caltrain Station and the future convergence of the Central Subway light rail, is the main draw on the corridor. Thousands of people an hour access this regional transportation hub by bicycle, by foot, by shuttle bus, TNC vehicle, taxi, personal vehicle, or by one of the eight Muni bus routes on Townsend. This project seeks to create an efficient and safe Townsend Street where all modes of travel are organized into comfortable and intuitive spaces.

## Goals

- Improve safety for people biking on Townsend Street
- Create safe, intuitive, and accessible loading zones for all users of the Caltrain Station
- Create safer pedestrian crossings on Townsend Street
- Improve Muni reliability on Townsend Street

## Timeline

- 2017 - Share conceptual designs and gather feedback from through Townsend Street businesses, residents, roadway users, and neighborhood stakeholders
- 2018 - Refine conceptual designs and continue in-depth stakeholder outreach
- November 6, 2018 - SFMTA Board Meeting (final approvals)
- November 2018 - Construction begins between 5th Street and 7th Street
- August 2019 - Construction begins between 3rd Street and 5th Street as well as between 7th Street and 8th Street



# Townsend Corridor Improvement Project



Townsend Street between 4th Street and 5th Street is under construction! The Townsend Corridor Improvement Project was approved by the San Francisco Municipal Transportation Agency (SFMTA) Board of Directors in November 2018 to create an efficient and safe Townsend Street, where all modes of travel are organized into comfortable and intuitive spaces. We thank you for your patience and attentiveness during this period of change.

## What to expect after construction:

### Raised Sidewalk Island **A**

The south side of Townsend Street will feature a new sidewalk island that provides a safe and continuous walking environment where it was previously lacking.

### Protected Bikeways **B**

Existing bike lanes will be upgraded with protection. The westbound bikeway will be located against the curb and reinforced using flexible posts. The eastbound bikeway will be reinforced by a raised sidewalk island. While cycling in the new eastbound bikeway, please be mindful of people crossing to and from the new sidewalk island.

### Muni Bus Zone **C**, Taxi Zone **D**, Passenger Loading Zone **E**

The bus zone, taxi zone, and passenger loading zone on the south side of Townsend Street will be relocated along the new sidewalk island. This arrangement will reduce interactions between people traveling by bike and other moving traffic. In addition, this change will improve transit reliability and safety by reducing the need for buses to pull in and out of travel lanes.

## Pedestrian Safety Improvements

In addition to the new raised sidewalk island, this project will upgrade existing crosswalks to high visibility continental crosswalks and install advance limit lines at signalized intersections to encourage vehicles to not encroach into the crosswalk. The project will also improve visibility at intersections with the use of red zones (daylighting).



For more information about the project, we invite you to please visit: [www.sfmta.com/townsend](http://www.sfmta.com/townsend)

# Townsend Corridor Improvement Project



Townsend Street between 4th Street and 5th Street is under construction! The Townsend Corridor Improvement Project was approved by the San Francisco Municipal Transportation Agency (SFMTA) Board of Directors in November 2018 to create an efficient and safe Townsend Street, where all modes of travel are organized into comfortable and intuitive spaces. Below is a general travel guide during construction. Please follow posted signs for exact details during construction.

## Muni Buses

### South side of Townsend Street between 4th Street & 5th Street:

- **10 Townsend** (inbound to Pacific Heights)
- **47 Van Ness** (inbound to Fisherman's Wharf & outbound to Caltrain)
- **83X Mid-Market Express** (inbound to Civic Center & outbound to Caltrain)

### Southeast corner of 4th/Townsend on Townsend Street:

- **30 Stockton** (inbound to Downtown & outbound to Marina)
- **45 Union/Stockton** (inbound to Downtown & outbound to Marina)

### Northeast corner of 4th/Townsend on Townsend Street (in front of The Creamery):

- **10 Townsend** (outbound to SF General Hospital)
- **81X Caltrain Express** (inbound to Financial District)
- **82X Levi Plaza Express** (inbound to Levi Plaza)

### Southwest corner of 4th/Townsend on 4th Street:

- **91 Owl 3rd St/19th Ave** (outbound to West Portal)
- **N Owl** (inbound to Downtown & outbound to Ocean Beach)

## Taxis

During construction, taxis will pick up and drop off in front of the Caltrain Station's 4th Street entrance (on 4th Street, west side, south of Townsend Street).

After construction, taxis will pick up and drop off along the sidewalk island (currently being built).

## Bikeshare

During construction, the existing on-sidewalk GoBike station at Townsend & 4th will still be operating. Additional GoBikes may be picked up and dropped off at 5th & Townsend, 5th & Brannan, 4th & Berry, and 3rd & Townsend.

After construction, GoBike stations will be located on-sidewalk at Townsend & 4th.

## Long-Distance Buses (including Megabus & FlixBus)

The pick up and drop off zone for long-distance buses has been permanently relocated from the south side of Townsend Street east of 5th Street to the south side of Townsend Street west of 5th Street.

## Passenger Loading (including paratransit & TNCs)

During construction, passenger loading (white zones) is available on Townsend Street, south side, east of Lusk Street at all times (approximately 267 Townsend Street) and on Townsend Street, north side, west of Lusk Street at all times except 6 am to 9 am (approximately 262 Townsend Street).

After construction, additional white zones will be available along the sidewalk island (currently being built).

## Commercial Loading

Commercial loading (yellow zones) on the north side of Townsend Street between 4th Street & 5th Street has been permanently relocated to the east side of 5th Street just north of Townsend Street.

## Motorcycle Parking

Motorcycle parking on the south side of Townsend Street between 4th Street & 5th Street has been permanently relocated to the south side of Townsend Street between 5th Street & 6th Street.

# Townsend Corridor Improvement Project

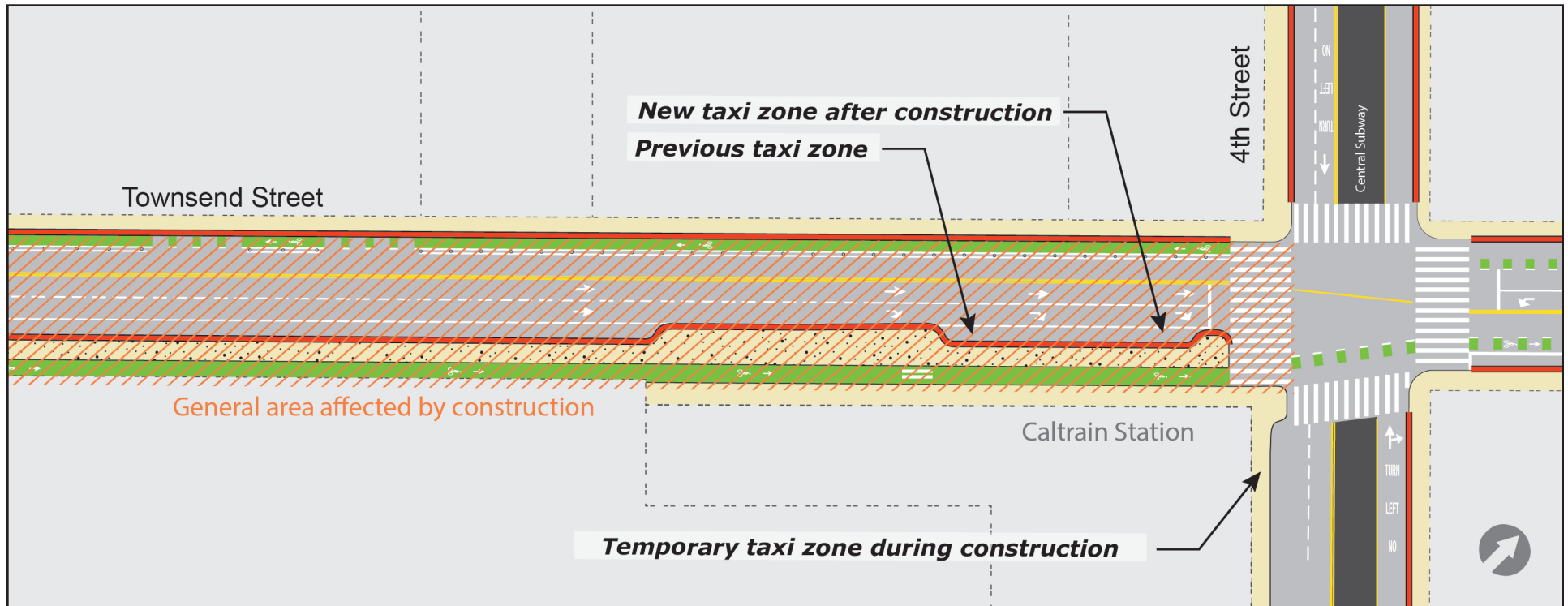


Townsend Street between 4th Street and 5th Street is under construction! The Townsend Corridor Improvement Project was approved by the San Francisco Municipal Transportation Agency (SFMTA) Board of Directors in November 2018 to create an efficient and safe Townsend Street, where all modes of travel are organized into comfortable and intuitive spaces. Below is a general travel guide during construction. Please follow posted signs for exact details during construction.

## Taxis

During construction, taxis will pick up and drop off in front of the Caltrain Station's 4th Street entrance (on 4th Street, west side, south of Townsend Street).

After construction, taxis will pick up and drop off along the sidewalk island (currently being built).



# Townsend Corridor Improvement Project

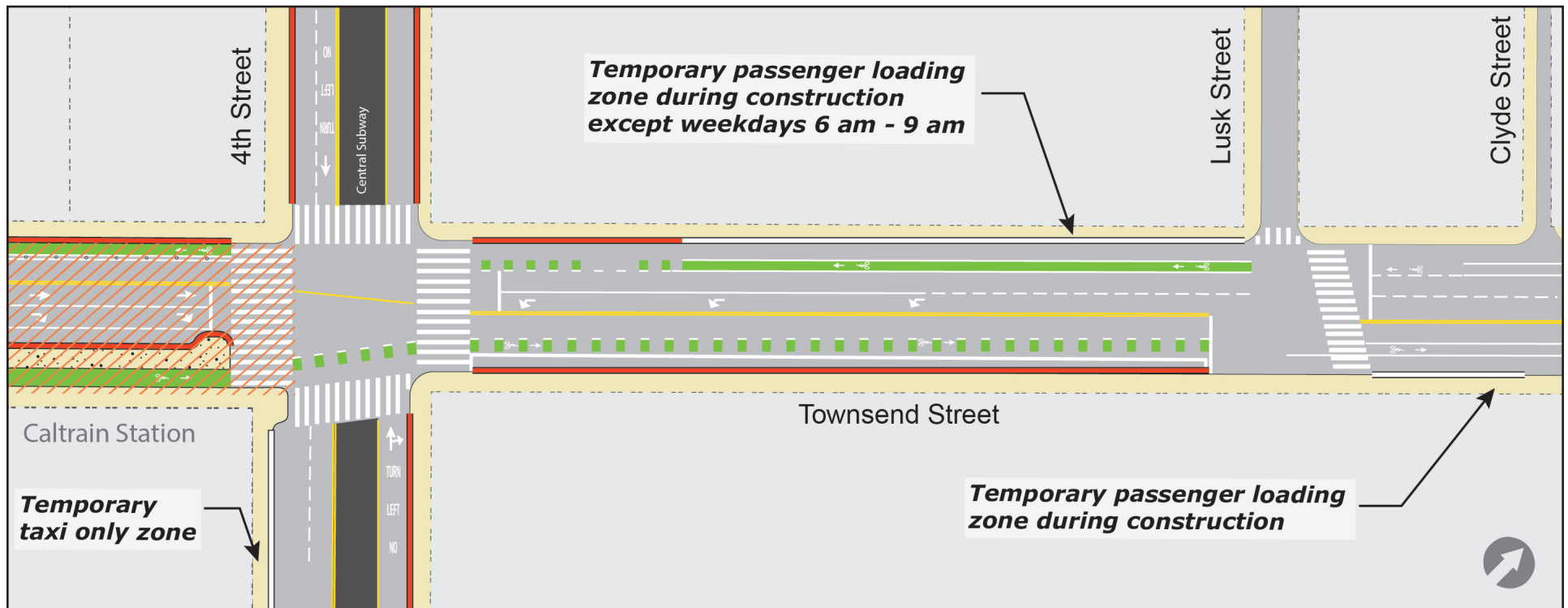


Townsend Street between 4th Street and 5th Street is under construction! The Townsend Corridor Improvement Project was approved by the San Francisco Municipal Transportation Agency (SFMTA) Board of Directors in November 2018 to create an efficient and safe Townsend Street, where all modes of travel are organized into comfortable and intuitive spaces. Below is a general travel guide during construction. Please follow posted signs for exact details during construction.

## Passenger Loading (including paratransit & TNCs)

During construction, passenger loading (white zones) is available on Townsend Street, south side, east of Lusk Street at all times (approximately 267 Townsend Street) and on Townsend Street, north side, west of Lusk Street at all times except 6 am to 9 am (approximately 262 Townsend Street).

After construction, additional white zones will be available along the sidewalk island (currently being built).



# Townsend Corridor Improvement Project



Townsend Street between 4th Street and 5th Street is under construction! The Townsend Corridor Improvement Project was approved by the San Francisco Municipal Transportation Agency (SFMTA) Board of Directors in November 2018 to create an efficient and safe Townsend Street, where all modes of travel are organized into comfortable and intuitive spaces. Below is a general travel guide during construction. Please follow posted signs for exact details during construction.

## Long-Distance Buses (including Megabus & FlixBus)

The pick up and drop off zone for long-distance buses has been permanently relocated from the south side of Townsend Street east of 5th Street to the south side of Townsend Street west of 5th Street.

