



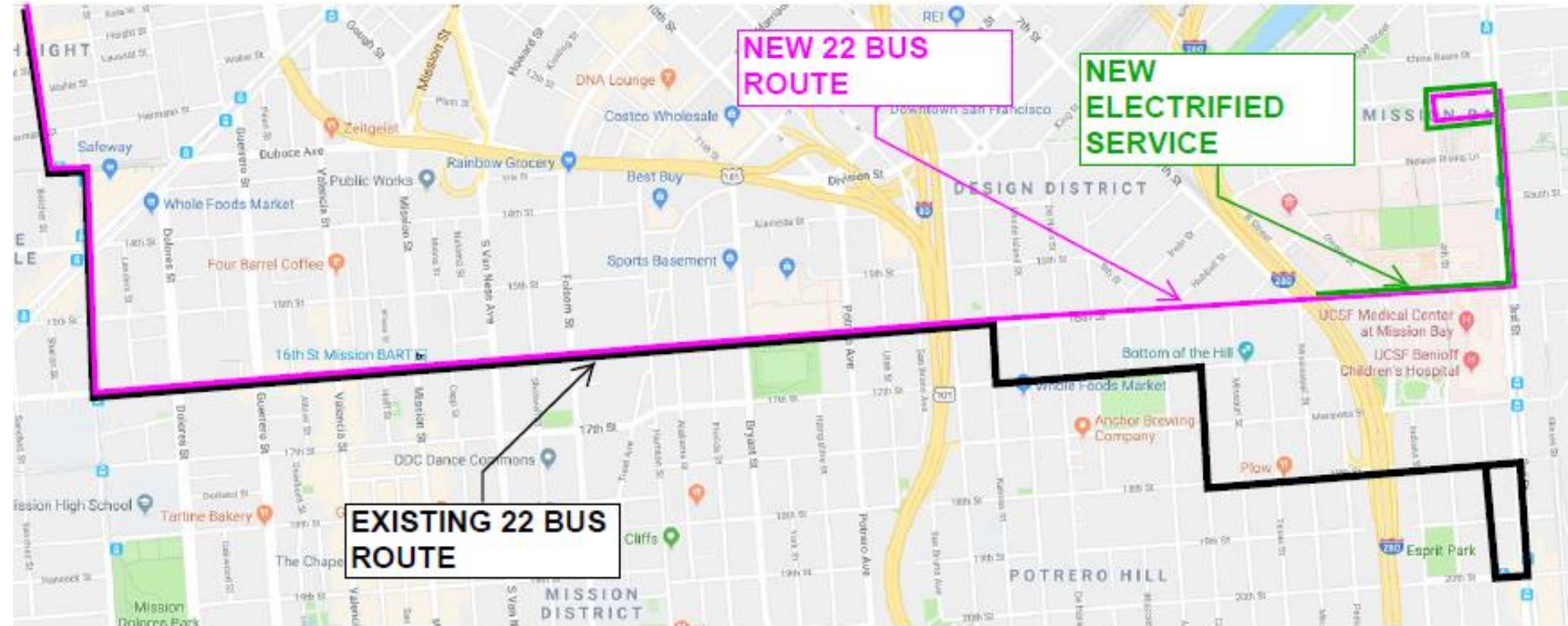
SFMTA

22 Fillmore: 16th Street Improvement Project

22 Fillmore – Phase II

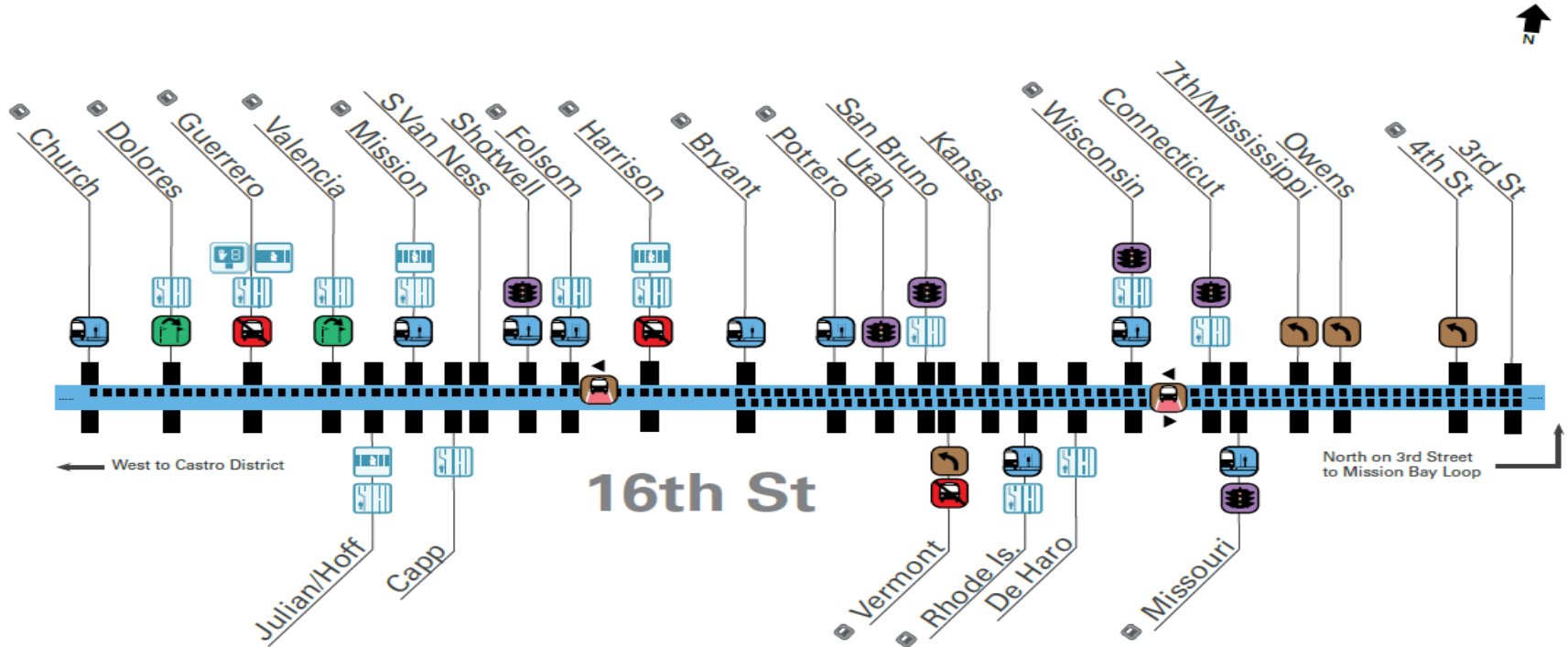
16th Street – Potrero Street to Church Street

Project Map



Summary of proposal

22 Fillmore - 16th Street Transit Priority Project



Summary of Proposals

- Transit-Only Lane
- Stop Removal
- Stop Relocation
- Potential Traffic Signal
- Retain Left Turn Lane
- New Transit Bulb
- Existing Stop

VISION ZERO SF

- Pedestrian Bulb
- Continental Crosswalk
- Pedestrian Countdown Signal


Project Scope

- SFMTA (Lead Agency)
 - Transit bulbout and Transit Island, OCS Work, Traffic Signal
- SFPUC Sewer
 - Spot sewer repair and replacement
- SFPUC Streetlights
 - Spot pole upgrades,
 - Upgrade from Hi-Pressure sodium to LED
- Public Works
 - Streetscape and Paving

Albion to Capp

Proposed Left-Turn Restrictions
at Julian/Hoff at Valencia
at Albion (westbound) at Capp

Relocate Stops
at Dolores (both directions)

 proposed location
 current location

New Transit Bulbs
at Mission and at Valencia

New Transit Lane
on 16th St (westbound)



← West to Castro District

→ East to Mission Bay

EXISTING



PROPOSAL

Westbound Side Running Transit-Only Lanes



CURRENT CORRIDOR DATA

	Albion	Valencia	Rhondel	Julian	Hoff	Mission	Capp	
Traffic Volumes	Average Daily Volume (on 16th Street)							
	11,400							
Collisions	Average Daily Volume (on the cross street)	800	9,500	800	800	1,200	10,800	1,200
	Ped-auto Collisions	1	5	1	1	1	11	7
	Bike-auto Collisions	3	5	1	1	1	5	5
	Auto-auto & auto-fixed object Collisions	5	6	-	-	3	14	4
	Total Collisions	9	16	2	2	5	30	16
Transit Ridership	Muni Ons	-	499	-	-	-	3,298	-
	Muni Offs	-	433	-	-	-	3,261	-



-  Pedestrian Bulb
-  Continental Crosswalk
-  Pedestrian Countdown Signal

Transit bulb - typical



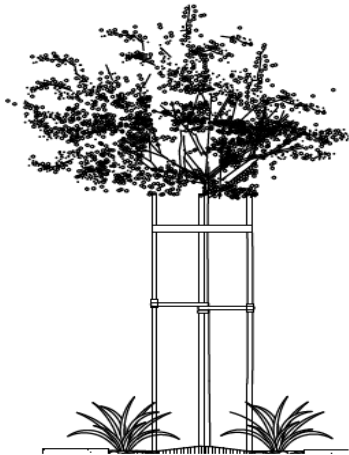
PERSPECTIVE:
TYPICAL FUTURE
IMPROVEMENTS

16TH AND
SHOTWELL STREET
INTERSECTION
LOOKING
SOUTHEAST

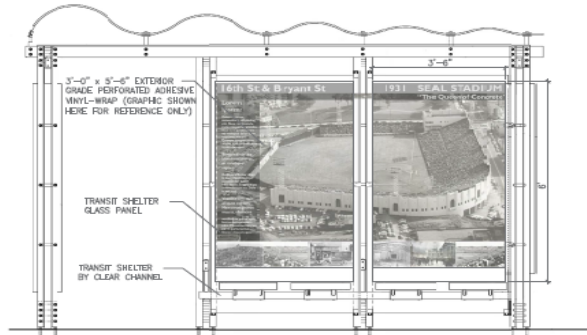


PLAN

Transit stop and shelters



New Street Tree Planting



Transit Shelter Historical Art Panels

No.	TYPE	LOCATION
1	BB	CHURCH ST NORTH
2	BB	DOLGUES ST NORTH
3	BB	DOLGUES ST SOUTH
4	BB	MISSION ST SOUTH
5	BB	MISSION ST NORTH
6	BB	MISSION ST NORTH EAST
7	BB	SHOTWELL ST SOUTH
8	BB	FULLSOM ST NORTH
9	BB	FULLSOM ST SOUTH
10	BB	BRYANT ST NORTH
11	BB	POTRERO AVE NORTH
12	BB	RHODE ISLAND ST NORTH
13	BB	RHODE ISLAND ST SOUTH
14	BB	WISCONSIN ST NORTH
15	BB	WISCONSIN ST SOUTH
16	BB	MISSOURI ST SOUTH
17	BB	MISSOURI ST SOUTH



1958 Trolley Coach 16th St and Bryant



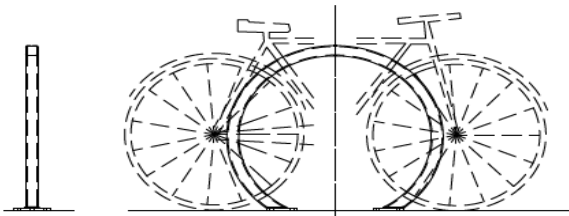
1910 16th Street and Valencia



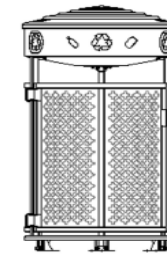
Seal Stadium



New Decorative Paving



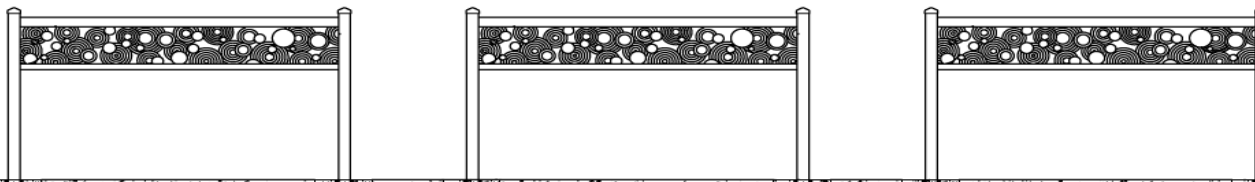
New Bicycle Racks



New Trash Receptacles



Mission Creek and Lake



Decorative Boarding Island Railings



22 Fillmore Transit Priority Project

Transit Elements

**16th Street,
Church Street to
Bryant Street**



**16th Street,
Bryant Street to
Third Street**



Community engagement

2015- 2017

- Community and merchant meetings
- Committees
- Survey
- E-mail blasts
- Post cards
- Online blog posts

2018- present

- Community and merchant meetings
- Pre-construction outreach beginning soon

Project Schedule

Milestone	Duration
Detailed Design:	July 2017 to March 2019
Advertise & Award: Phase II	August 2019 to November 2019
Construction: Phase II	December 2019 to December 2021

THANK YOU

Contact:

Project Manager: Parand Maleki, Parand.Maleki@SFMTA.com

Public Outreach: Erin McMillan, Erin.McMillan@SFMTA.com

