



SFMTA
Municipal
Transportation
Agency

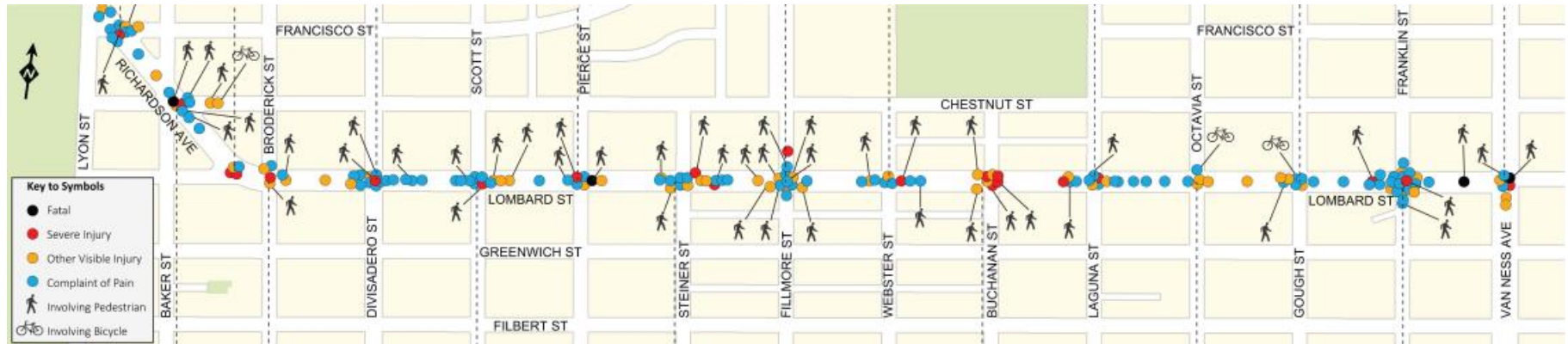
Lombard Street Safety Project Outreach Meeting 3

November 17, 2015
Marina Middle School

Agenda

- Motivation for Project: Vision Zero
- Project Update
- Commuter Shuttle Program
- Safety Treatments
- General Feedback
- Intersection Proposals – updated based on feedback
- Schedule and Next Steps
- Q&A Session

Lombard Street: Safety in Action



- **Vision Zero:** the City's policy commitment to eliminate all traffic fatalities by 2024
- Lombard Street is a high-injury corridor
 - 157 collisions between 2008 and 2013
- Lombard corridor pedestrian collision rate: 27 pedestrian collisions per mile
 - Citywide pedestrian collision rate: 4 collisions per mile
- Lombard corridor vehicle collision rate: 91 vehicle collisions per mile
 - Citywide vehicle collision rate: 12 collisions per mile

- Project proposal was motivated by Vision Zero and coordinated with the CalTrans repaving project
- Past outreach meetings
 - June 2015: Meeting 1
 - September 2014: Meeting 2
 - October 2015: Walking tours
 - Today: November 17, 2015 Meeting 3
- Based off feedback from meetings, walking tours, site visits and email inquires SFMTA has updated their proposals
- Next steps
 - Dec. 4, 2015: Public Hearing
 - Jan. 19, 2015: SFMTA Board Meeting

Commuter Shuttle Program

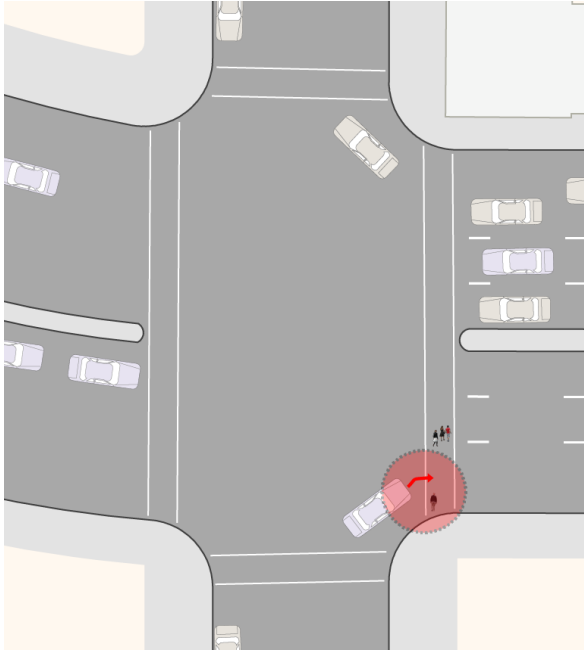
- SFMTA Board Meeting today
 - Necessary because existing stops only authorized through Jan. 2016
 - No changes to existing stops made at today's meeting
- Existing stop is located at Pierce this project would recommend to the Commuter Shuttle Program to relocate to Scott Street

For more information please visit:

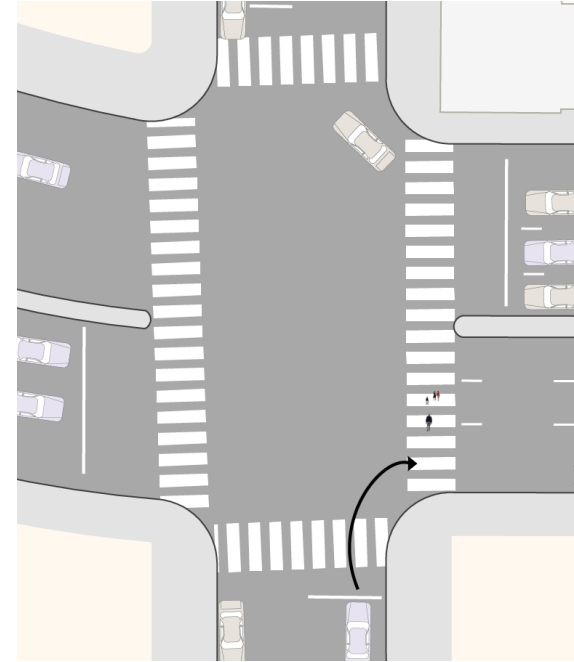
<https://www.sfmta.com/projects-planning/projects/commuter-shuttles-policy-and-pilot-program>

Safety Treatments: High Visibility Crosswalks and Advanced Limit Lines

Existing Conditions



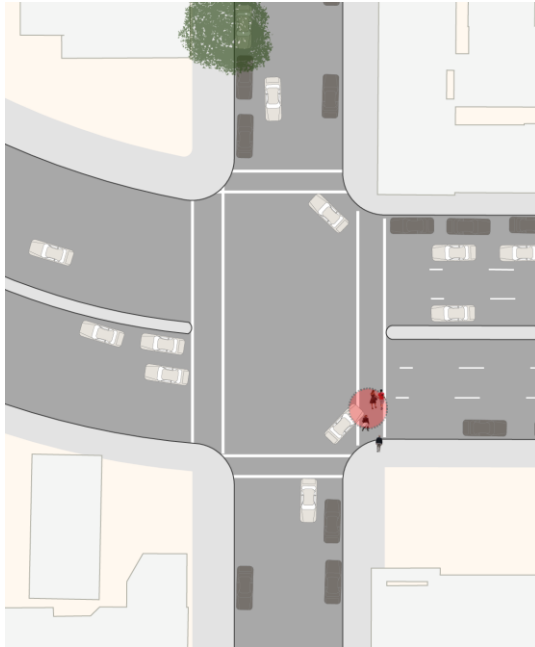
Proposed Conditions



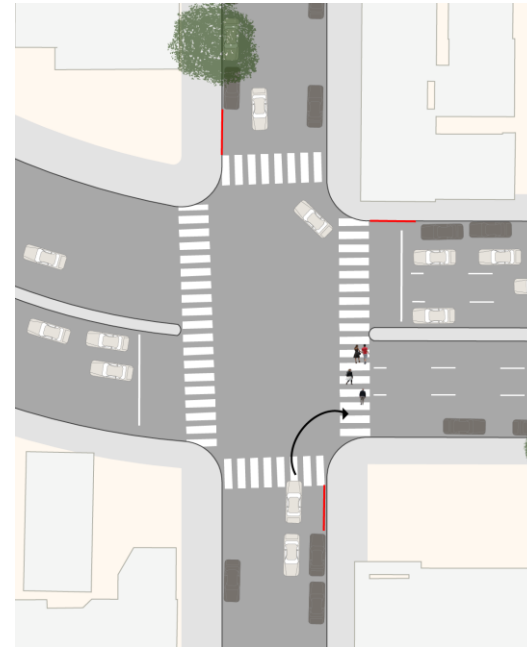
- Eliminates conflicts
- Improves visibility
- Gives people walking a head start

Safety Treatments: Daylighting and Leading Pedestrian Interval

Existing Conditions



Proposed Conditions

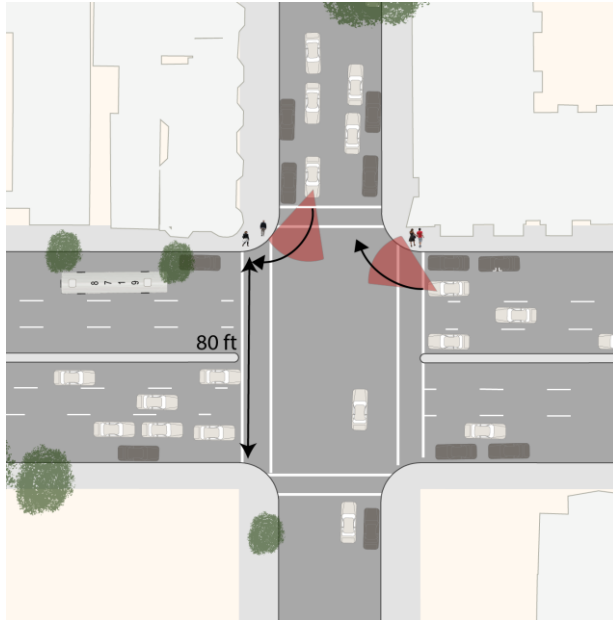


- Eliminates conflicts
- Improves visibility

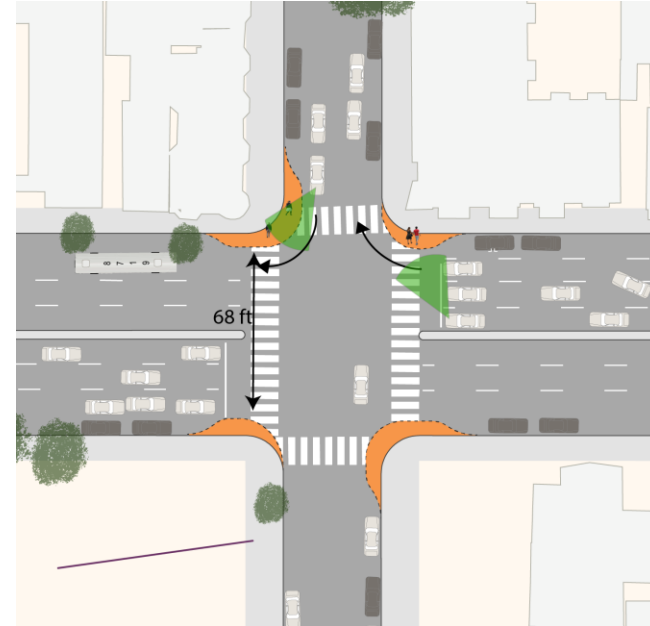
Leading pedestrian intervals (LPI, or "pedestrian head start") release people walking at a signalized intersection three to five seconds before any conflicting autos receive the green.

Safety Treatments: Pedestrian Bulbs

Existing Conditions



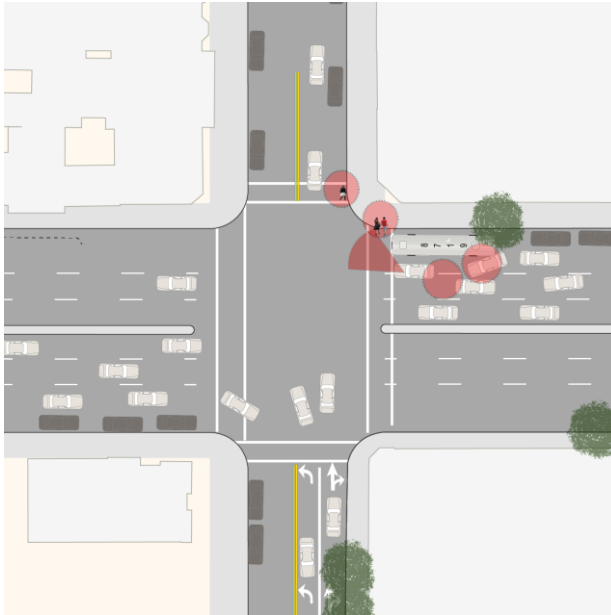
Proposed Conditions



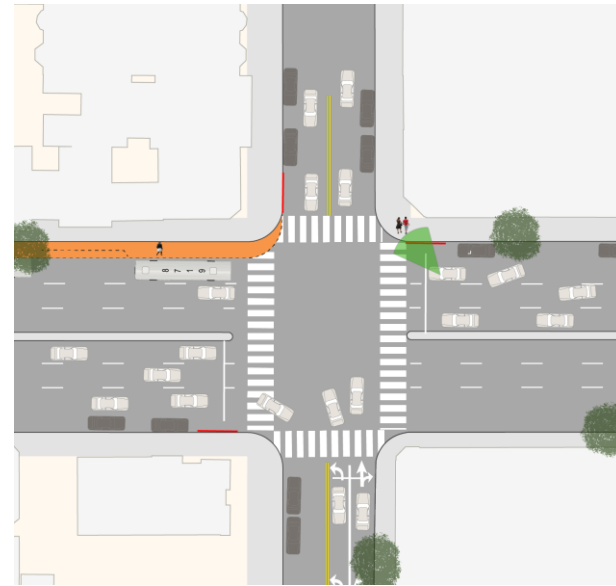
- Improves visibility
- Reduces crossing distance
- Slows turning vehicles

Safety Treatments: Farside Transit Bulbs

Existing Conditions



Proposed Conditions



- Eliminates conflicts between drivers and buses
- Improves visibility
- Reduces crossing distance
- Slows turning vehicles
- More street parking can be retained
- Improves transit reliability and efficiency (3 min travel time savings)

General Feedback

- Ban left turns on Lombard Street
- Accessibility concerns
- Parking loss concerns
- Do not make any changes to Lombard Street

Amenity	1 bus	2 buses	
Nearside bus zone	120 ft	185 ft	
Farside bus bulb	65 ft	130 ft	
*Minimum distances, need to consider curb cuts and ADA requirements			
Parking Loss Associated with Transit Stops Comparison			
Keep bus zones nearside	22		
Current Proposals	13		

Intersection Proposal: Francisco to Divisadero



New Transit Bulbs



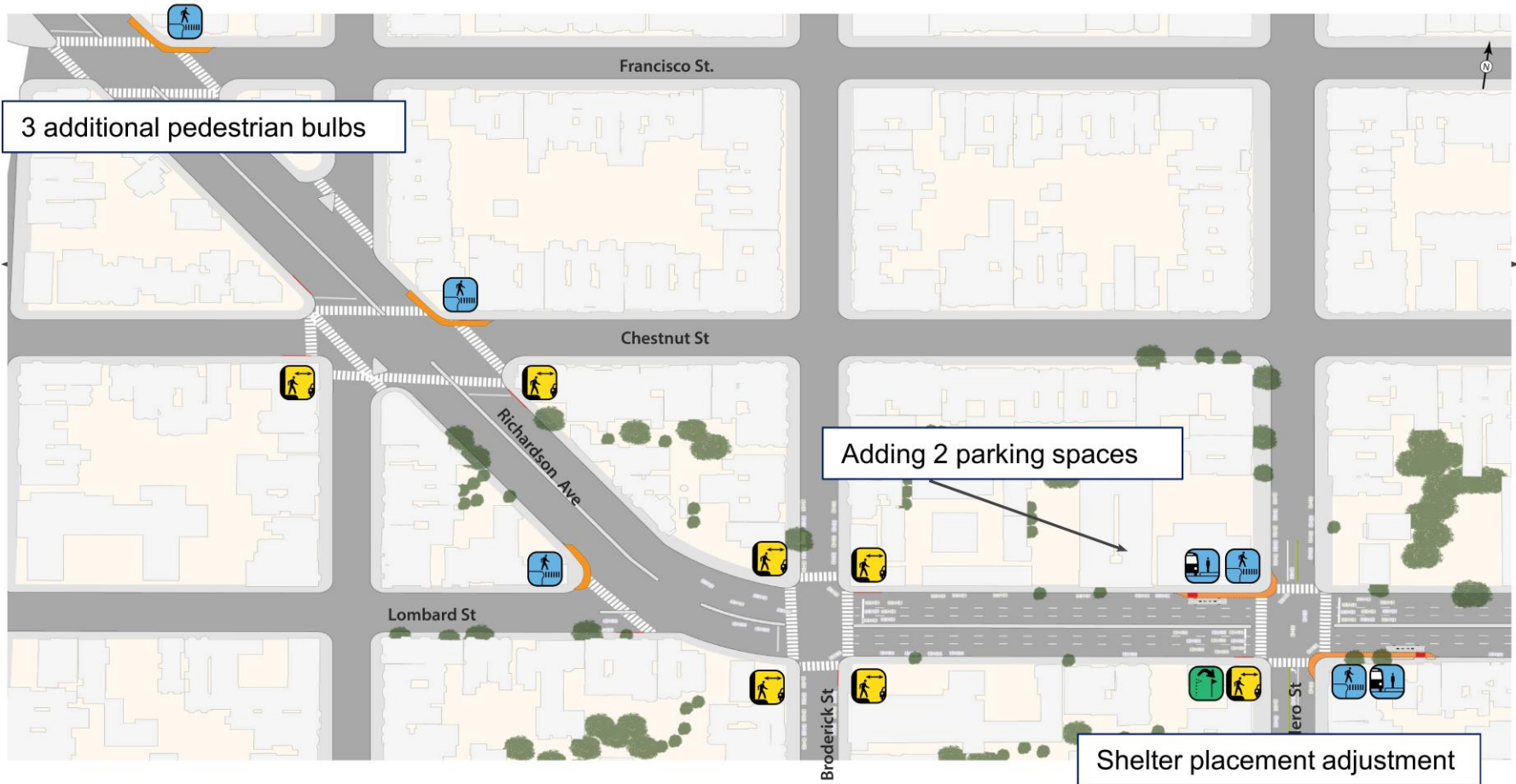
Daylighting



Stop Relocation



New Pedestrian Bulb



Intersection Proposal: Scott to Fillmore



Stop Relocation



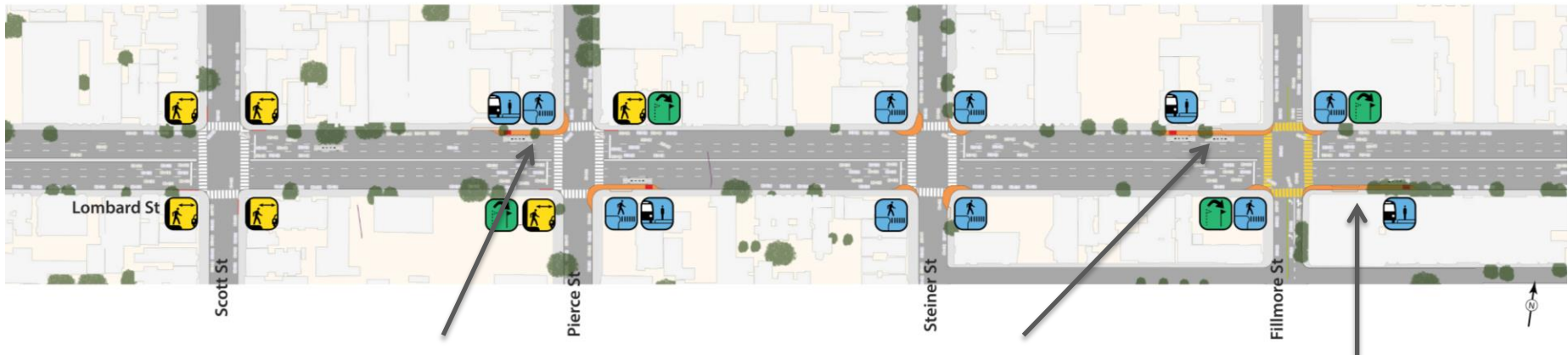
New Transit Bulb



Daylighting



New Pedestrian Bulb



Relocating commercial loading zone
Addresses concerns with loading impacts

Establishing 2 green meters

Establishing commercial loading zone

Intersection Proposal: Webster to Laguna



Daylighting



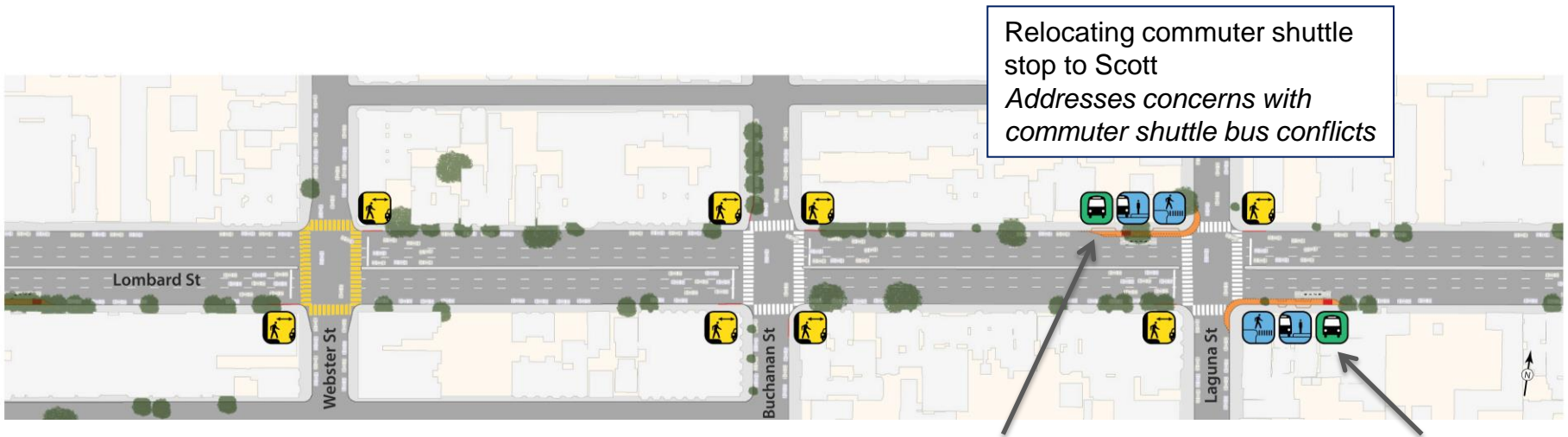
New Pedestrian Bulbs



New Transit Bulb





New Transit Stop

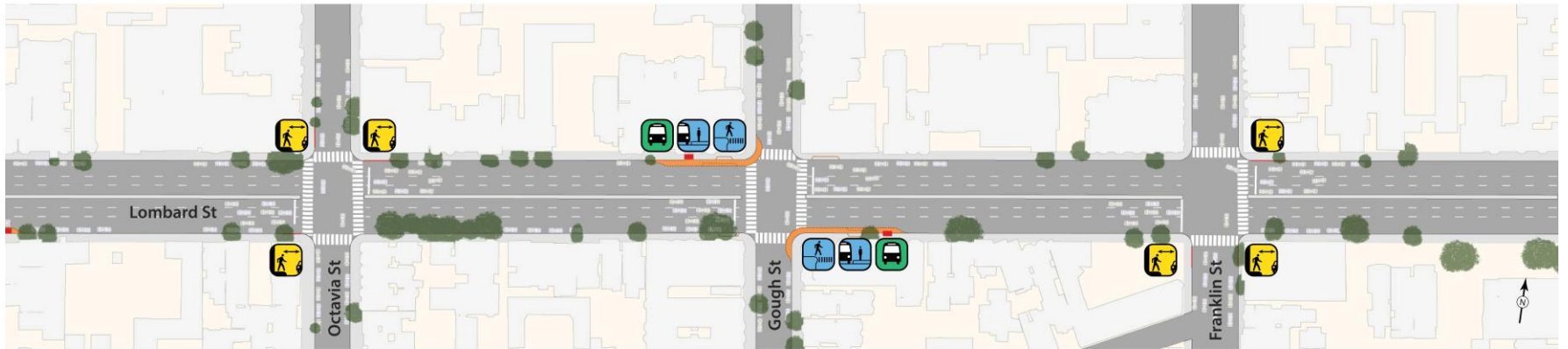


Shortening bulb
Reduces parking loss

Shortening bulb
Reduces parking loss

Intersection Proposal: Octavia to Franklin

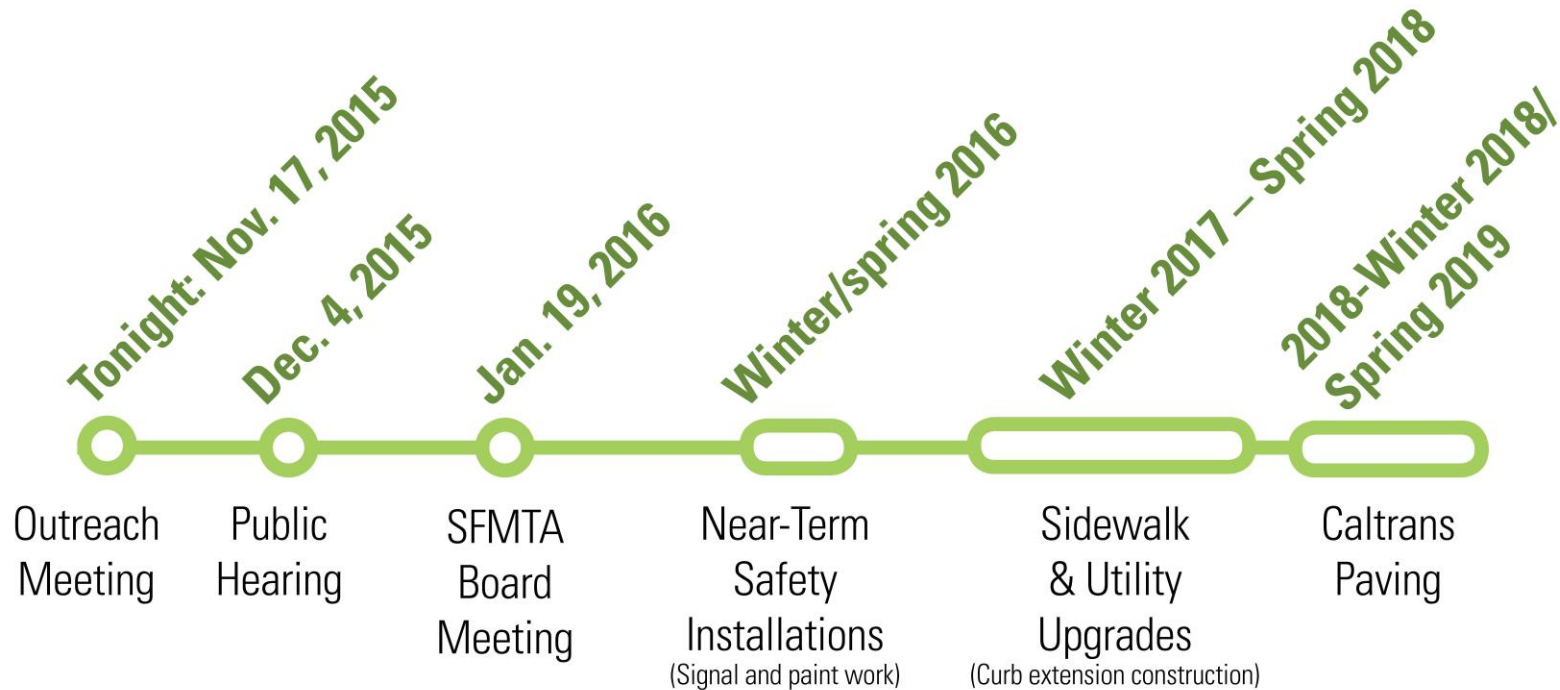
-  New Transit Stop
-  Daylighting



← West to the Presidio

East to Fort Mason →

Schedule and Next Steps



**Outreach throughout Construction*

Q&A Session

2 minute limit

Please be respectful in your
questions/ comments