



Through Vision Zero SF we commit to working together to prioritize street safety and eliminate traffic deaths in San Francisco.

VISION ZERO UPDATE

December 6, 2018

MTA Citizen Advisory Council

OVERVIEW

- What is Vision Zero?
- How are we Doing?
 - Traffic Fatalities through October 2018
 - Safe Streets
 - Safe People
- 2019 Action Strategy

WHAT IS VISION ZERO?

Vision Zero SF is the City's road safety policy that will build safety and livability into our streets, protecting the one million people who move about the City every day.



Transportation Authority Vision Zero Committee

Community & City Vision Zero Task Force

San Francisco Vision Zero

Data Systems

Legislative Agenda

Safe Streets

Engineering complete streets projects

Traffic calming in neighborhoods

Safe People

Educating and raising awareness about street safety

Enforcing traffic laws

Safe Vehicles

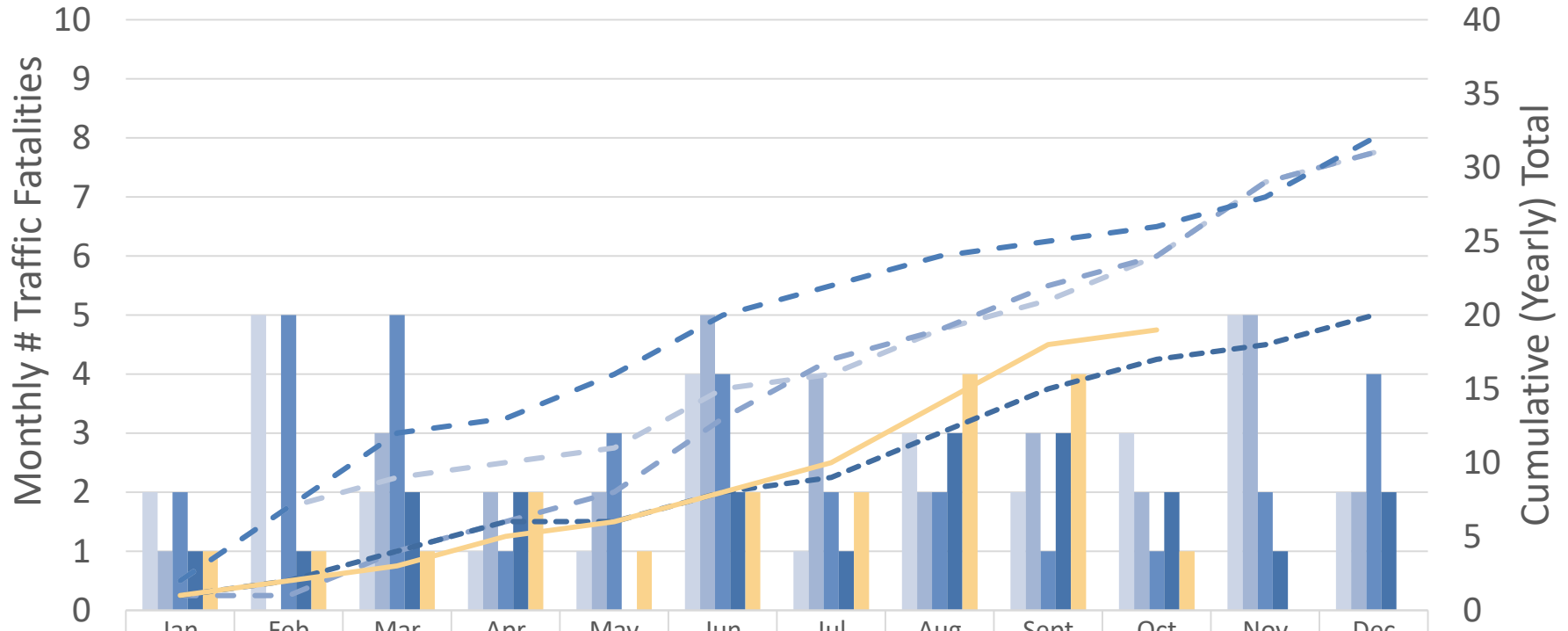
Using technology to ensure a safe system



SAN FRANCISCO PLANNING DEPARTMENT

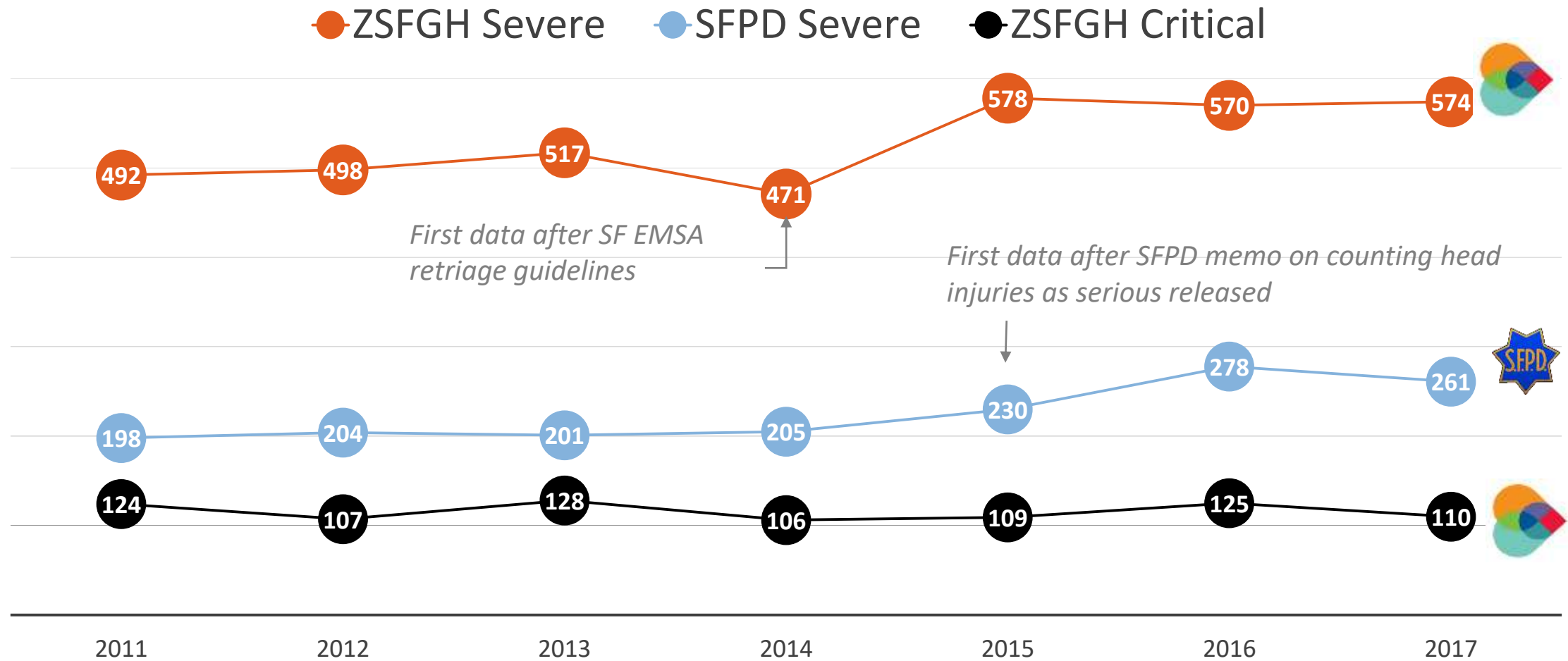


2014-2018 VISION ZERO TRAFFIC FATALITIES



	Jan	Feb	Mar	Apr	May	Jun	Jul	Aug	Sept	Oct	Nov	Dec
2014 Monthly Count	2	5	2	1	1	4	1	3	2	3	5	2
2015 Monthly Count	1	0	3	2	2	5	4	2	3	2	5	2
2016 Monthly Count	2	5	5	1	3	4	2	2	1	1	2	4
2017 Monthly Count	1	1	2	2	0	2	1	3	3	2	1	2
2018 Monthly Count	1	1	1	2	1	2	2	4	4	1		
2014 Cumulative Total	2	7	9	10	11	15	16	19	21	24	29	31
2015 Cumulative Total	1	1	4	6	8	13	17	19	22	24	29	31
2016 Cumulative Total	2	7	12	13	16	20	22	24	25	26	28	32
2017 Cumulative Total	1	2	4	6	6	8	9	12	15	17	18	20
2018 Cumulative Total	1	2	3	5	6	8	10	14	18	19		

TOTAL SEVERE INJURY COUNTS BY YEAR



VISION ZERO SF SEVERE INJURY TRENDS



People walking comprise approximately **one-third** of severe and 30-40% of critical injuries in recent years (2015-2017)

People in motor vehicles comprise a **growing proportion** of severe and critical injuries treated at ZSFG in recent years, making up 33% of severe injuries and 30% of critical injuries in 2017



People biking and people on motorcycles comprise similar proportions of severe and critical injuries in recent years (2015-2017), **each of approximately 20%** -- a notably higher burden of injury relative to the proportion of trips they represent on SF streets.

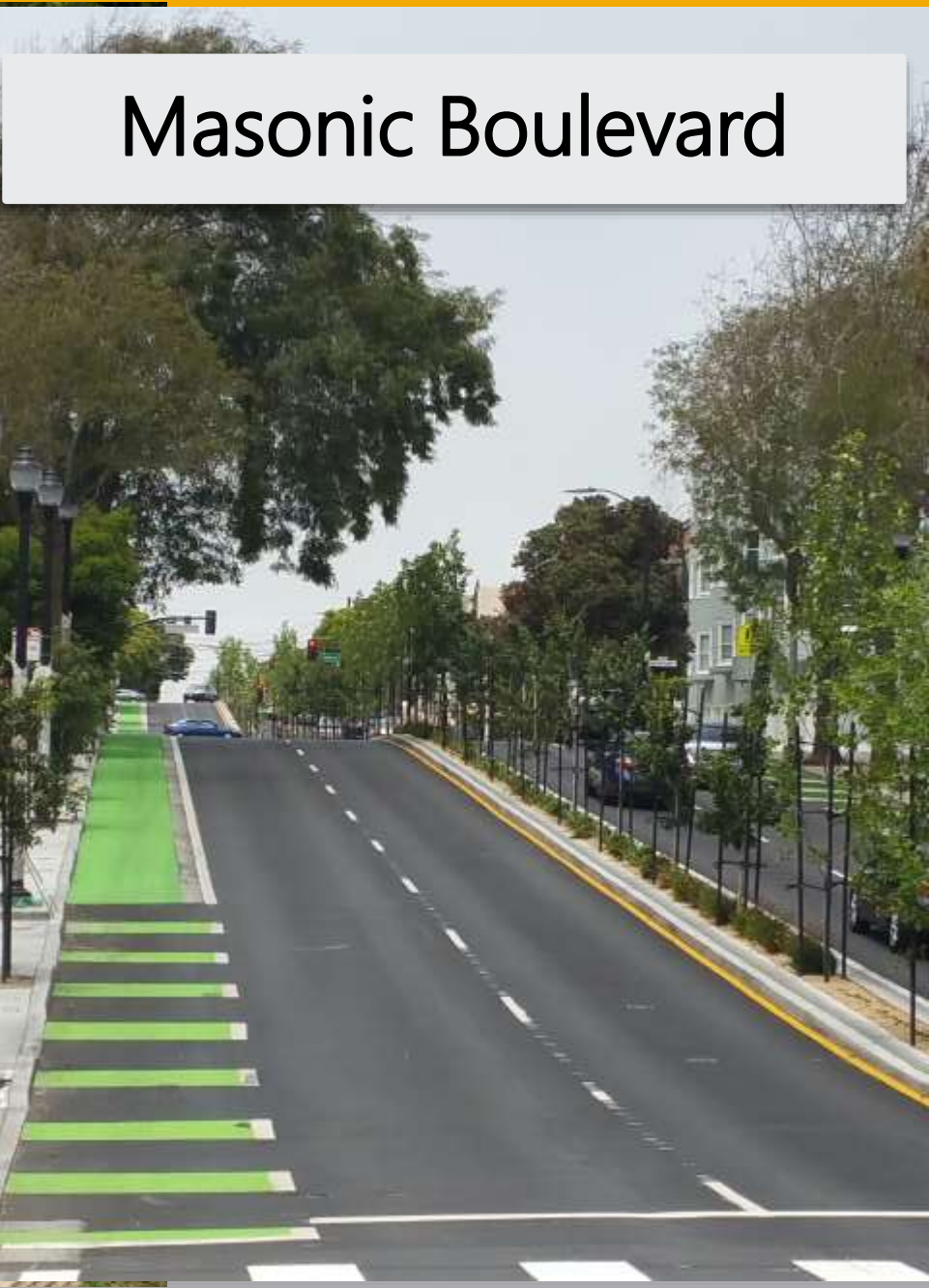




Safe Streets



JFK Drive- Golden Gate Park



Masonic Boulevard

Polk Street



Approved by SFMTA Board, Fall 2018:

6th St.

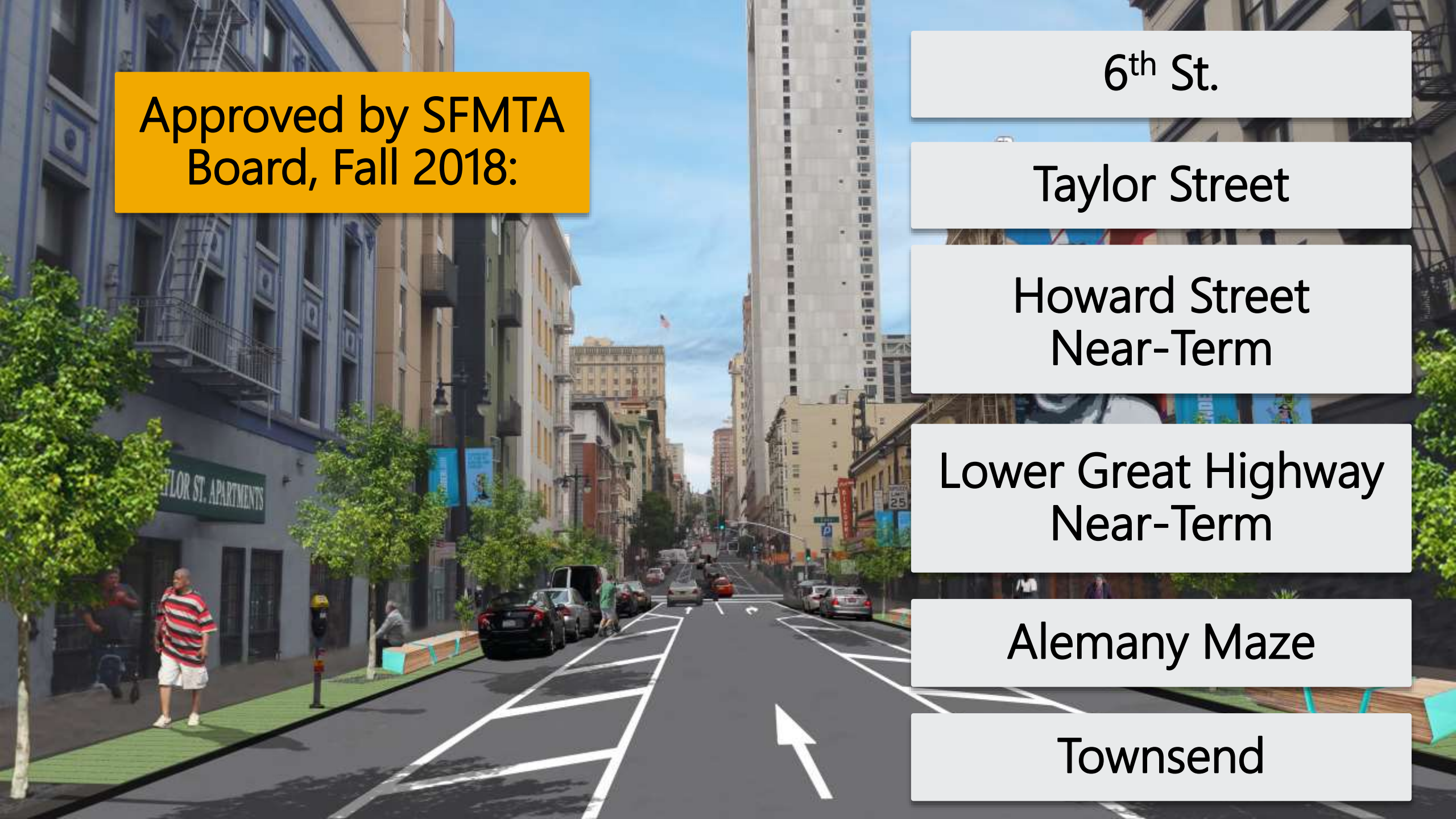
Taylor Street

Howard Street
Near-Term

Lower Great Highway
Near-Term

Alemany Maze

Townsend





Safe People

CAMPAIGN: KILL WITH KINDNESS



SAFER INTERSECTIONS (LEFT TURN COLLISIONS)



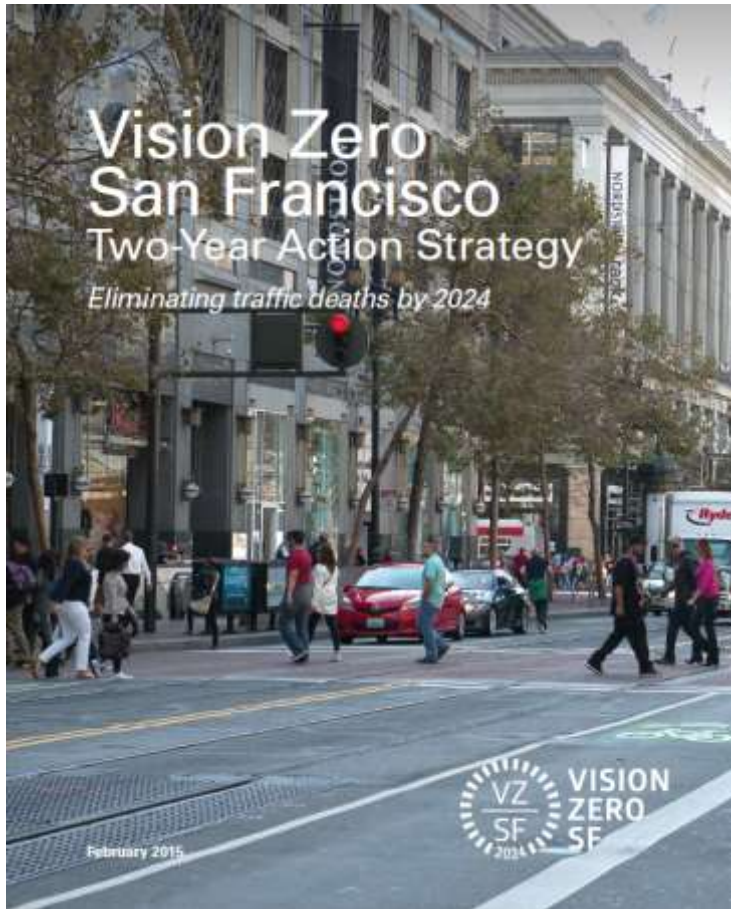
STREET TEAM OUTREACH





Action Strategy

UPDATING THE ACTION STRATEGY



2015

What is Vision Zero?



2017

Defining a Safe Systems Approach



2019

A Policy Platform of Bold Ideas to Achieve Vision Zero

PROCESS TO DATE

Bold Ideas Workshop - develop and build support for high impact, long term initiatives

Community Workshop – prioritize current actions & develop new ideas

Community Coffee Chats & Tea Talks - prioritize current actions & develop new ideas

City Workshops – review and develop S-M-A-R-T actions

Continued iterative development of actions, metrics and policy platforms



 **NEW IDEAS**

Share your ideas for new Vision Zero action items.
This idea is for:

Safe People Safe Streets Safe Vehicles

Name and Organization (optional): _____



STRATEGIC ACTIONS



- Delivery timelines & HIN improvements
- Curb management
- Signal upgrades
- Better accessibility
- Lower speed limits
- Culturally competent outreach
- Pricing



- Safe Routes Programs
- High visibility enforcement
- Driver safety education
- Culturally competent engagement
- Street teams
- Left-turn collisions campaign



- Autonomous Vehicles Policy
- City fleet telematics data
- Emerging Mobility permits & evaluations
- TNC Safety

Data Systems




ZERO NEEDS MORE



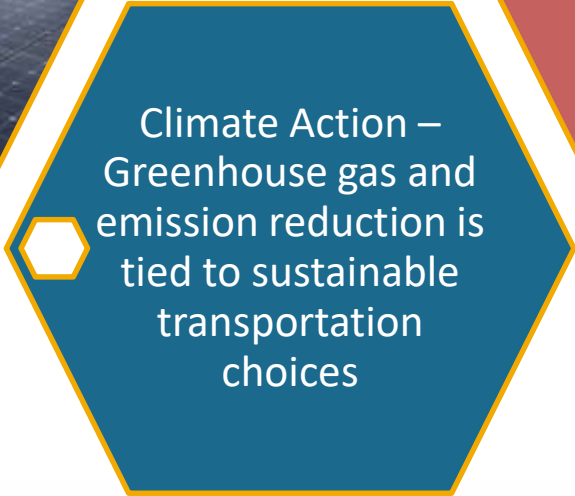
KEY SYNERGIES



Active Transportation –
More people walking
and biking for health
outcomes



MuniForward- Make
our transit system
the best choice to
get around



Climate Action –
Greenhouse gas and
emission reduction is
tied to sustainable
transportation
choices





Thank you!