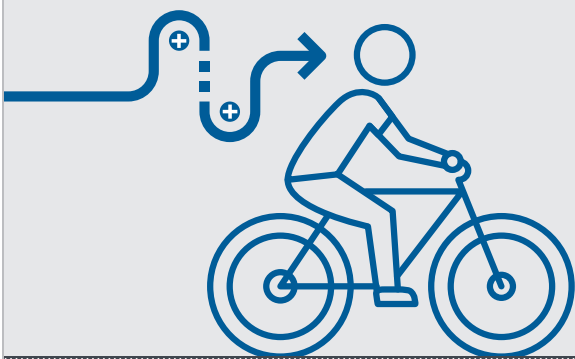


# Celebrating another year of biking in San Francisco!

The SFMTA measures bicycle ridership in San Francisco to assess trends over time and **2017 was a big year for biking!** These bike ridership factoids are pulled from a handful of sources including: project tracking, SFMTA's network of automated bike counters, bike share data, an annual manual count conducted the second week of September, and US Census data.

## Key Findings for Bicycle Data in 2017


**1** **AGENCY WORK:**  
Over **14 miles** of bikeways were added or upgraded




**2** **HIGHEST RIDERSHIP MONTH:** August saw the highest bike ridership, with **1,368,437 bikes counted** at 66 locations

**MOST POPULAR BIKE COUNTER:** The counter on the Panhandle Bike Path logged the most bikes: **794,124!**

**3** **WEEKDAY RIDERSHIP:**  
More than **44,000 bikes** were counted on an average weekday

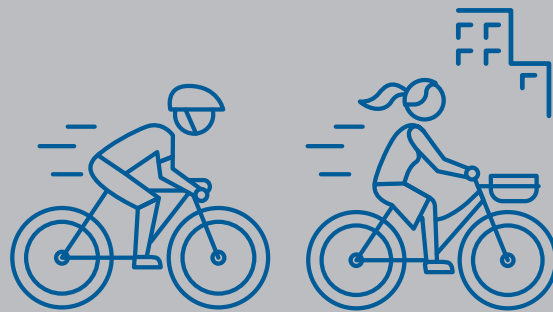
 The morning peak commute period occurs from 7-10am

 The evening peak commute period occurs from 4-7pm

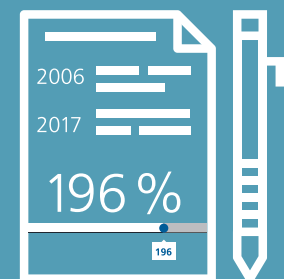
**4** **BIKE SHARE:**  
The installation of new Ford GoBike bike share stations led to a **10% increase** in bikes counted on nearby routes



**5** **CENSUS MODE SHARE:**  
The U.S. Census Bureau estimated that **3.9%** of city residents commuted by bike in the year prior: 2016.



**6** **MANUAL BIKE COUNTS** have seen a **196% increase** since 2006



**7** **WET WEATHER:**  
Rain contributed to a **5% decrease** observed in our **annual manual counts** in September





**8** **CITY CONSTRUCTION:**  
Over **4,000 special traffic permits** were issued affecting over 1,362 blocks of right of way, one contributing factor to count decreases.



**9** **2017 WEATHER:**

 5,934 bikes splashed through San Francisco's **wettest day**  
Feb. 20 - 2.16"

 29,203 bikes enjoyed the sun on San Francisco's **hottest day**  
Sep. 2 - 88°

 16,578 bikes braved the chill on San Francisco's **coldest day**  
Jan. 20 - 34°

We now have regularly released interactive data on our website!  
**Check out: [sfmta.com/bikecount](http://sfmta.com/bikecount)**



SFMTA SFMTA.com