

PROJECT OVERVIEW

Thank you for joining us at today's open house for the Excelsior Neighborhood Traffic Calming Project. This project aims to create more safe and calmer neighborhood streets for people accessing schools, parks, transit, and nearby commercial corridors. The project team has had numerous conversations with community groups, residents and stakeholders about transportation improvements for residential streets in the Excelsior and today we are opening the conversation to hear what you want to see in your neighborhood.

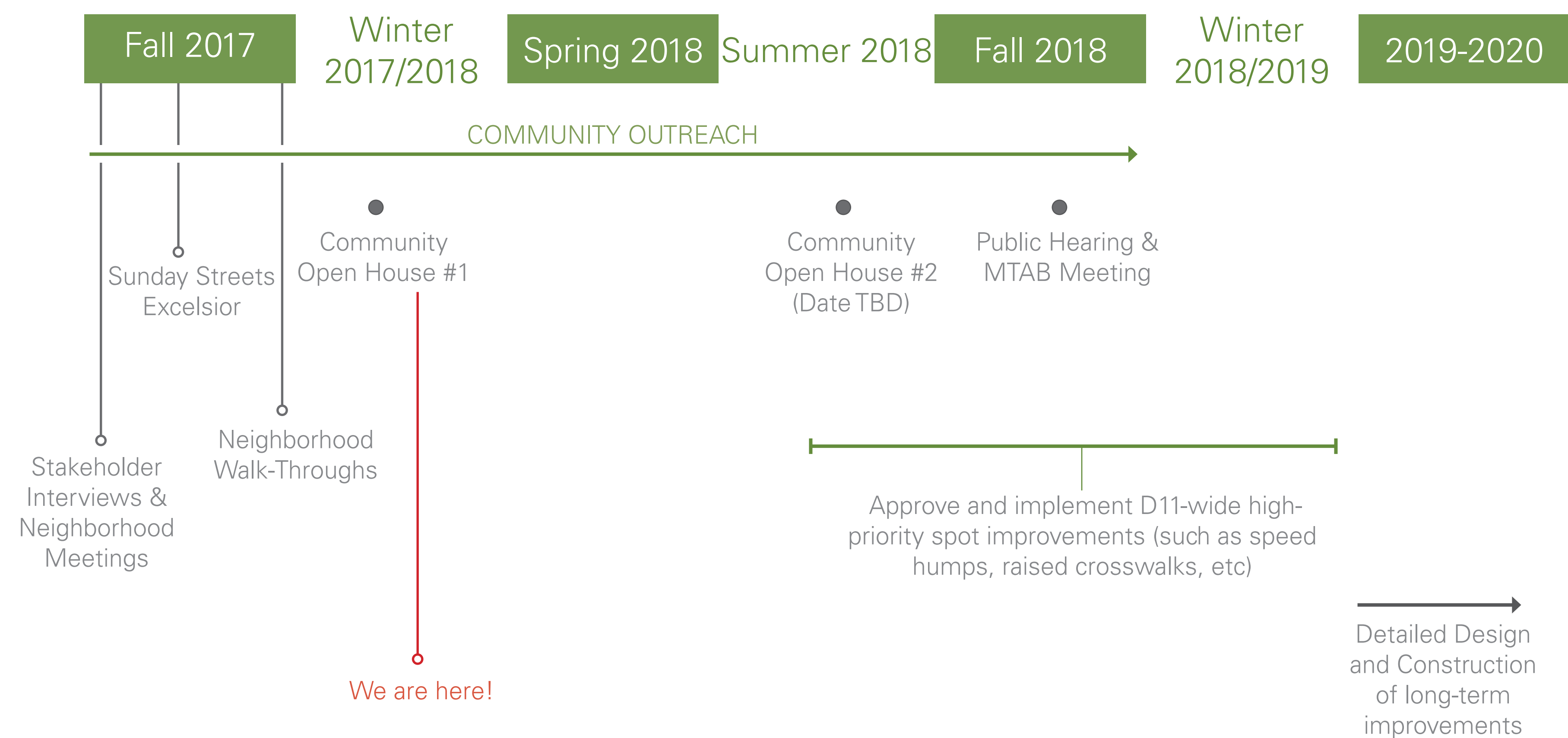
PROJECT GOALS:

- » Improve safety and comfort for those traveling by foot or on a bicycle
- » Better neighborhood connections to schools, parks, transit and local commercial corridors
- » Better understand parking demand and curb usage
- » Reduce speeding and exhibition driving in the neighborhood

GOALS OF TODAY'S OPEN HOUSE

- » Clarify corridors for improvements
- » Prioritize District 11 near-term spot improvements
- » Better understand parking needs in the Excelsior

PROJECT TIMELINE:

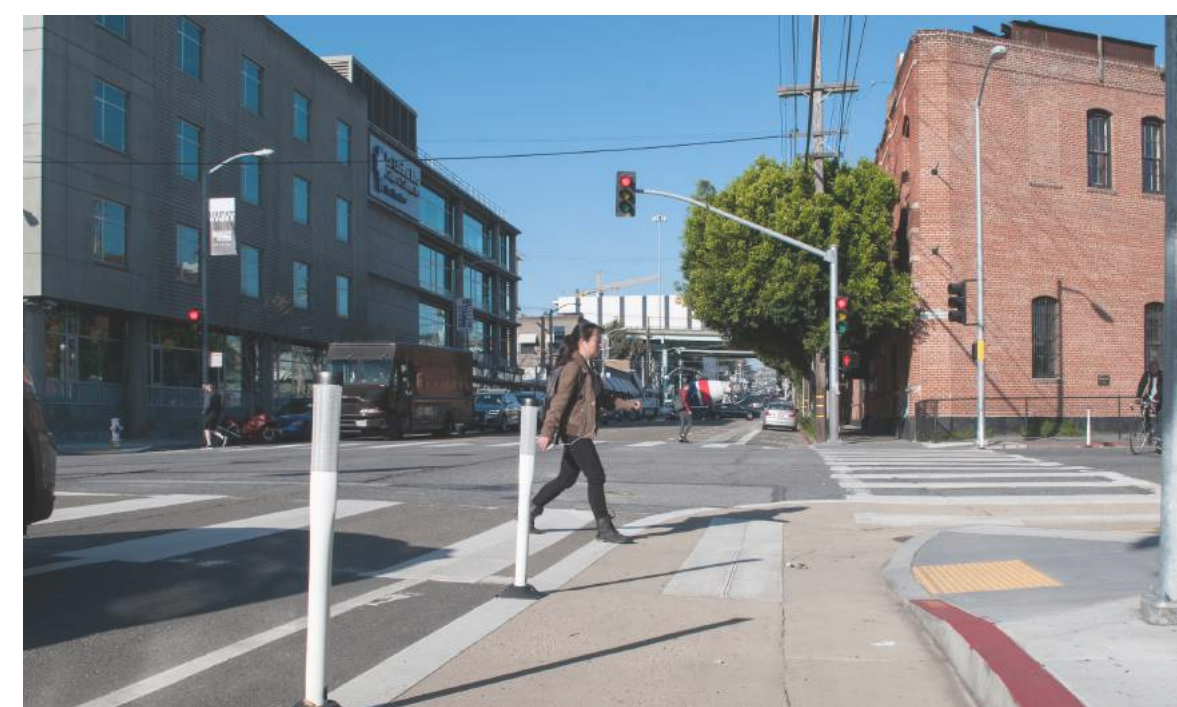


TRAFFIC CALMING

Different types of traffic calming are appropriate on different types of streets – most often traffic calming involves physical safety improvements such as:



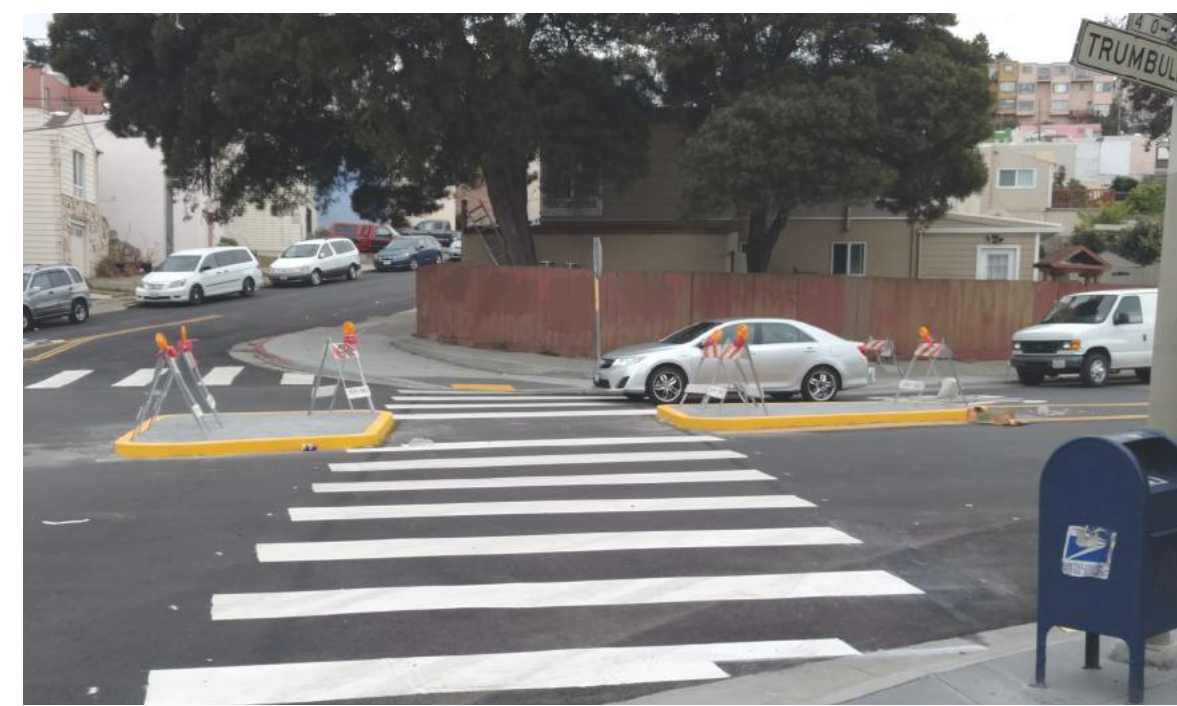
Speed Hump



Painted Safety Zone (PSZ)



Raised Crosswalk

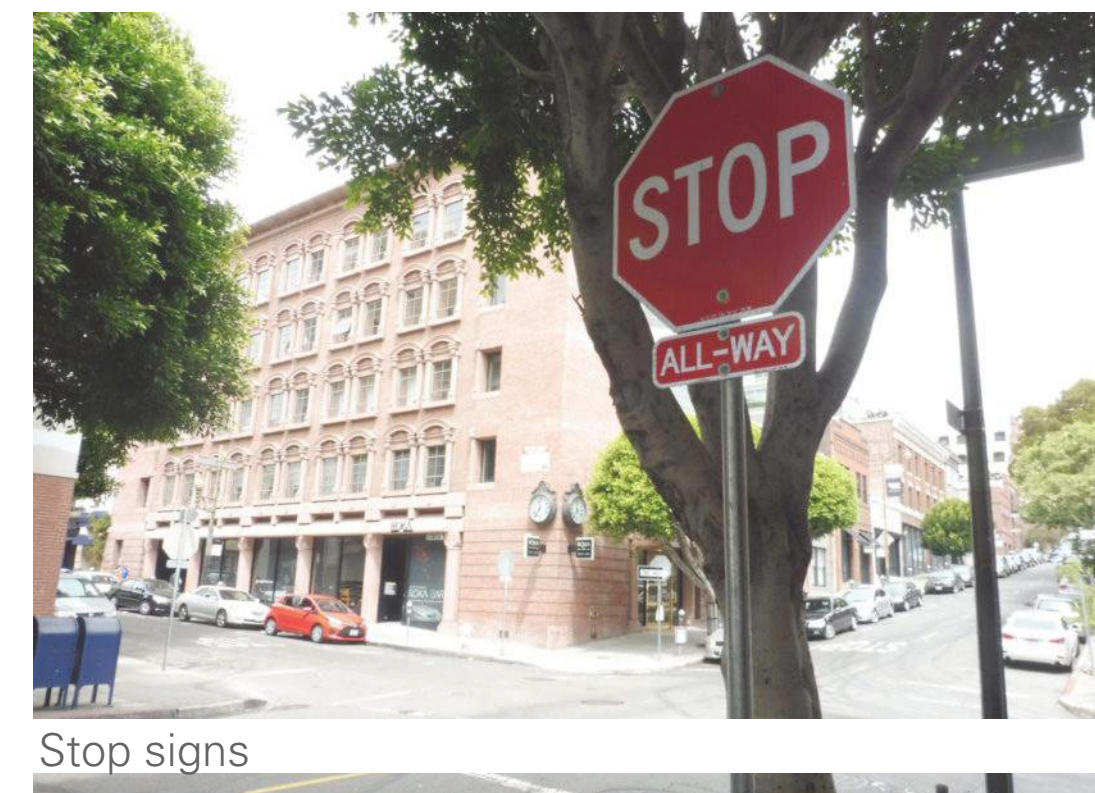


Median Island

Traffic calming is commonly used on residential streets.

TRAFFIC OPERATIONS & PEDESTRIAN SAFETY

Traffic operations utilize regulatory measures, such as STOP signs and traffic signals, which are used to control traffic at an intersection. Such measures may need to meet criteria established by the state and federal level.



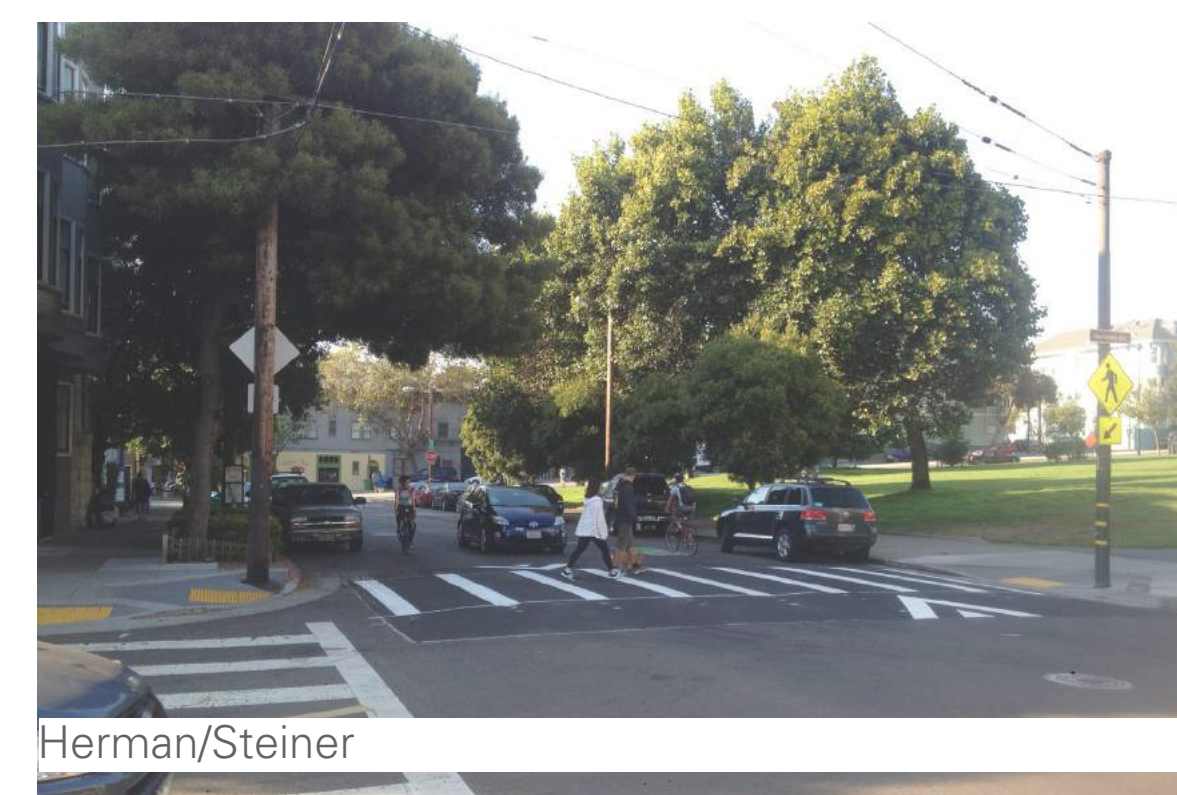
Stop signs



Crosswalks

Regulatory measures are commonly used on arterials and connectors (i.e., Geneva Ave., Mission St., and Alemany Blvd.) but can also be used on residential streets with heavy activity at intersections.

CORRIDOR OR "NEIGHBORWAY" IMPROVEMENTS



Herman/Steiner

Neighborhood streets should feel safe and inviting, especially to walk and bike to nearby destinations like parks, schools and shops. A "neighborway" supports this idea by concentrating a variety traffic calming and operational tools on preferred routes.

NEAR-TERM SPOT IMPROVEMENTS...

Supervisor Safai and the San Francisco County Transportation Authority are providing funding for the SFMTA to implement a number of spot improvements this year at high priority locations. The map shows a number of locations that have been highlighted by his office and in our work with the community to date.

Over the next few months we will be narrowing down the top locations for near-term implementation. We want to hear from you if you support these locations or foresee any issues with these identified spot improvements.



How will locations be prioritized?

- Collaboration with Supervisor Safai office
- Schools and community assets
- Documented safety issues such as exhibition driving
- Documented community support
- Projects that can be implemented quickly

Once prioritized spot improvements are established, the SFMTA will:

- Share project list on website and to this project's email list
- Send a letter to residents on streets where speed humps are proposed
- Post notices for all projects when they are ready for formal approval

PRIORITY "NEIGHBORWAY" CORRIDORS

From conversations we've had with community members and stakeholders, we have identified priority locations for neighborways. These corridors have emerged as high priority neighborhood connections for walking and biking, as well as clusters of streets nearby schools.



We want to ensure that we've identified the right corridors for concentrating traffic calming and traffic operation tools.

Please let us know what you think about by providing your input below, on the map or on one of our "street report cards"!

*Please note that the Excelsior Neighborhood Traffic Calming Project only covers residential streets. Streets such as Mission St, Geneva Ave, Alemany Blvd, and San Jose Ave are not included in the scope of this project.

PRIORITY "NEIGHBORWAY" CORRIDORS



We want to ensure that we've identified the right corridors for concentrating traffic calming and traffic operation tools.

Please let us know what you think by providing your input below, on the map or on one of our "street report cards"!

*Please note that the Excelsior Neighborhood Traffic Calming Project only covers residential streets. Streets such as Mission St, Geneva Ave, Albany Blvd, and San Jose Ave are not included in the scope of this project.

OTHER DISTRICT 11 INITIATIVES & PROJECTS SFMTA.COM/EXCELSIORTRAFFICCALMING

Excelsior & Outer Mission Neighborhood Strategy (SF Planning)

Goal

Develop a vision for how to sustain and enhance the Excelsior, Outer Mission, Mission Terrace, Crocker Amazon, and Cayuga neighborhoods.

Outreach Process (on-going)

- » Work Groups
- » Public Workshops
- » Neighborhood Surveys
- » Focus Groups



Contacts: Rachael Tanner, rachael.tanner@sfgov.org; Jorge Rivas, jorge.rivas@sfgov.org

Mission Street Excelsior Safety Project (SFMTA, SF Planning and SFPW)

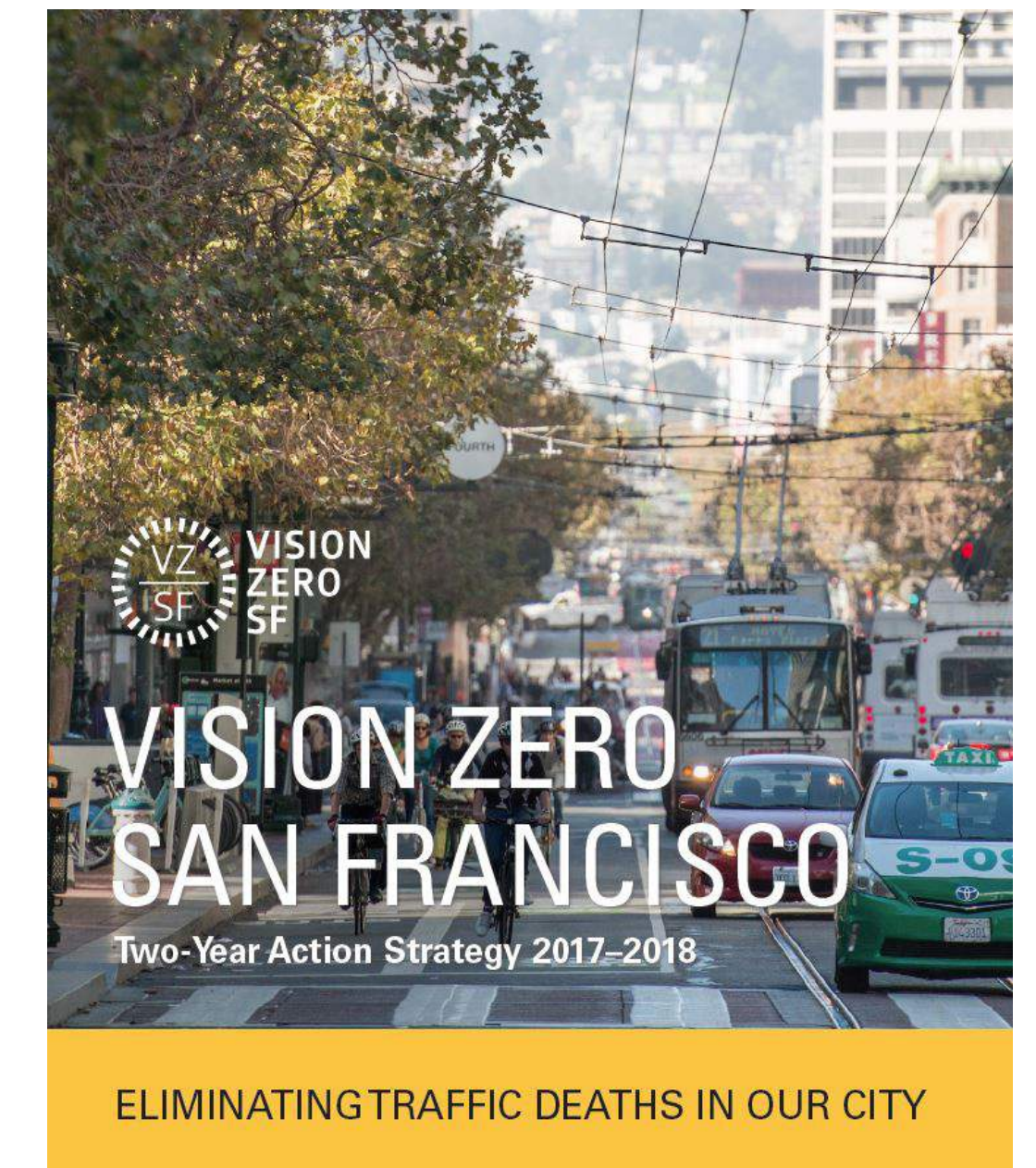
Goal

- » Increase safety for all users, especially people who walk, bike, and ride transit
- » Improve transit reliability
- » Enhance local business district

Outreach Process (on-going)

- » Community Workshops
- » Meeting with community stakeholders

Contact: Dan Provence, dan.provence@sfmta.com



Muni Equity Strategy (SFMTA)

Goal

- » Improving transit performance in select San Francisco neighborhoods

Outreach Process

- » Stakeholder interviews
- » Community events
- » Community and rider surveys
- » Community conversations
- » Workshops

Contact: Adrienne Heim, Adrienne.Heim@sfmta.com

Bikeshare- Ford GoBikes

Goal

- » To provide public bikes for use across San Francisco that make it as convenient as possible to integrate biking into your daily life

Outreach Process

- » On-going community workshops



Contact: Justin Nguyen, justinnguyen@fordgobike.com

SF Safe Routes to School

Excelsior Programs

- » Bike, Walk, & Roll
 - » SF Community, Cleveland Elementary, Monroe Elementary

- » Excelsior Task Force

Contact: Jacquie Zapata-Chavez, gogreen@sbusd.edu

McLaren Park Vision (Rec & Park)

Goals & Principles

- » Enhance community access into and through the park
- » Maintain natural landscapes
- » Enhance panoramic views
- » Create and build diverse play opportunities

Outreach Process

- » Community Workshops
- » Walking Tours
- » Meeting with community stakeholders
- » Community surveys



Contact: Alexis Ward, Alexis.Ward@sfgov.edu